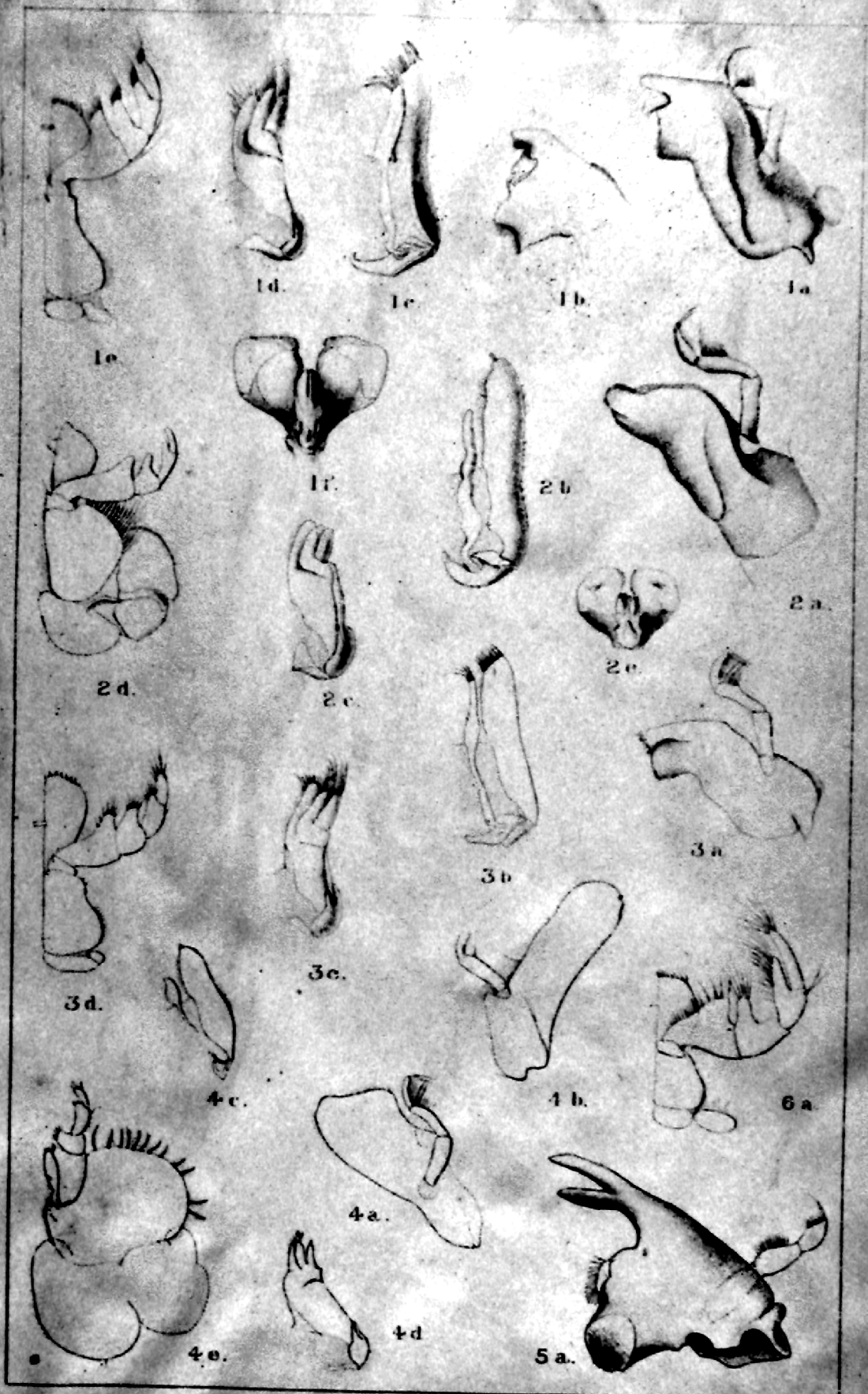
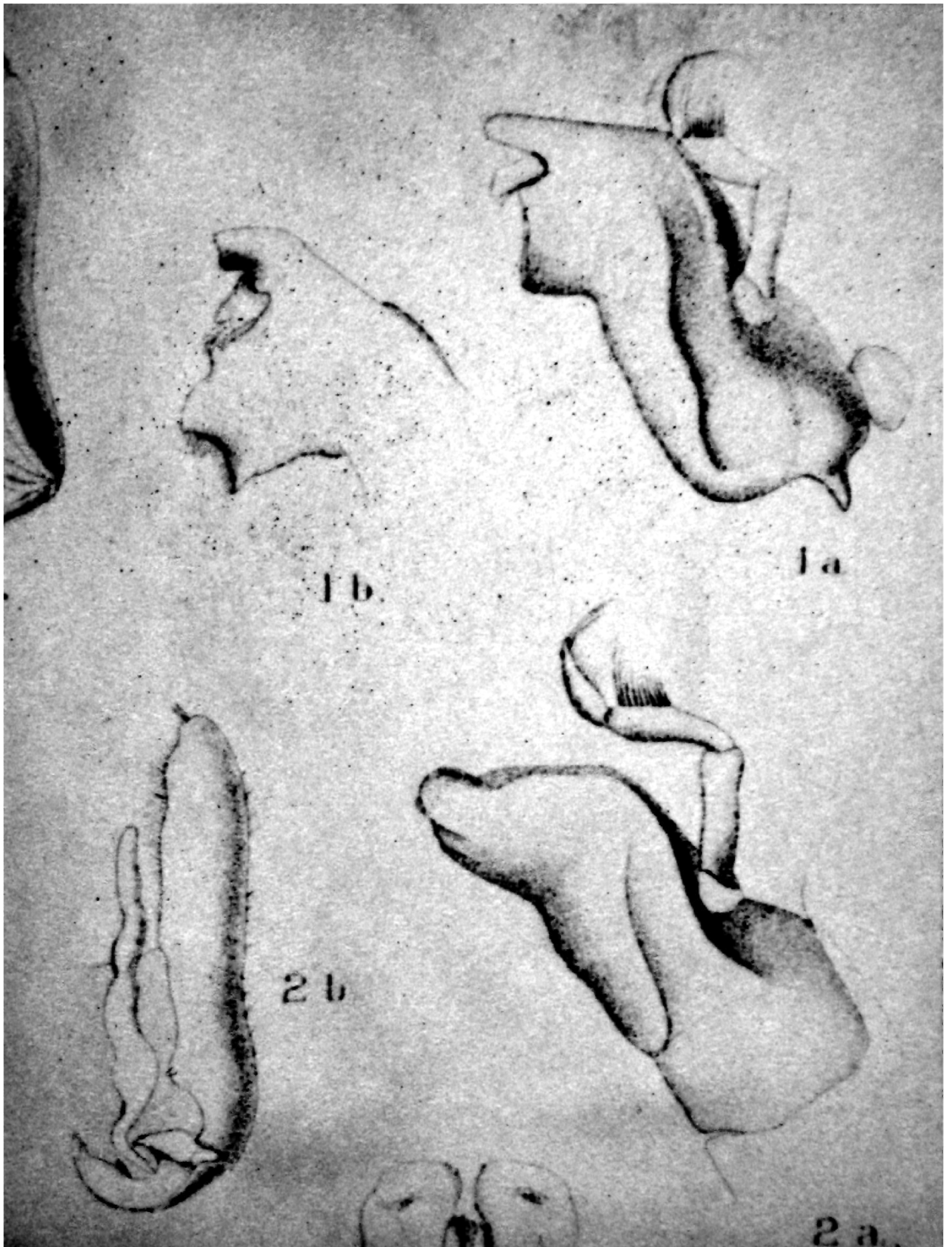


The body is much depressed, similar in both sexes; an adult female measures 4.5 mm. in length and 2.8 mm. in breadth, broadest at the end of thorax; the largest females are a little larger than the males. Third joint of antennulæ is very slender, as long as the sum of the two proximal joints. Prehensile hand of first thoracic legs large, oblong-oval, in the male a little longer and narrower than in the female; prehensile hand of second legs in the male very much smaller than that of first pair, but rather similar in shape; the "claw" as long as the hand. Last abdominal segment triangular, at the base less broad than the broad but very short anterior part of abdomen; the upper side of the last segment with a raised semicircular ridge sub-parallel with the lateral margin and at the mesial line a little longer from the end than from the anterior margin; parallel with and rather near the whole lateral and posterior margin a sublinear impression is found; the margin itself is finely serrate. Exp. of urp. reaches slightly beyond the abdomen; it is rather narrow, flat, especially on its outer margin finely serrate; the end is bifid, its inner process several times smaller than the outer.

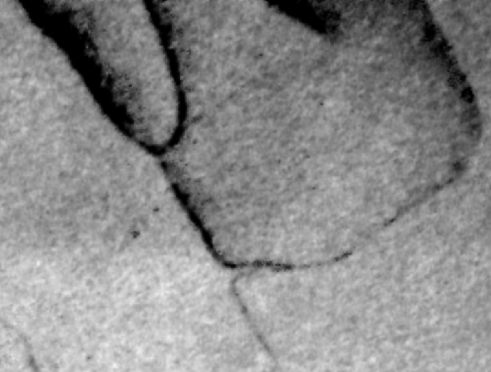
(12) *Tecticeps* (Richardson).—The type is *T. alaskensis* (Richardson); a few years after the same author established a second species, *T. convexus*. The U. S. National Museum has favoured me with several specimens from the same locality ("Albatross," Stat. 3307), labelled *T. alaskensis*. At a closer examination the majority turned out to be males, but two of them adult females. In the male second thoracic legs terminate in a rather small prehensile hand; the sixth joint ("propodus") is oblong, with a short process on the lower side at the broader base; seventh joint, which is adduced along the lower margin of the sixth, is rather considerably longer than the latter and besides sinuate; sixth joint of seventh thoracic legs is considerably longer and thicker than the corresponding joint of sixth legs, and its proximal half is somewhat curved; the end of abdomen is acute and exp. of urp. considerably longer than endp. In the female second legs are simple as third pair; sixth joint of seventh legs is







2 b.



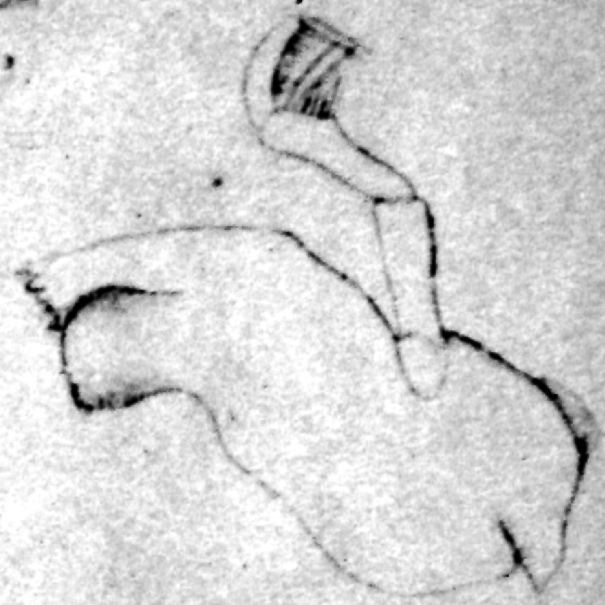
2 a.



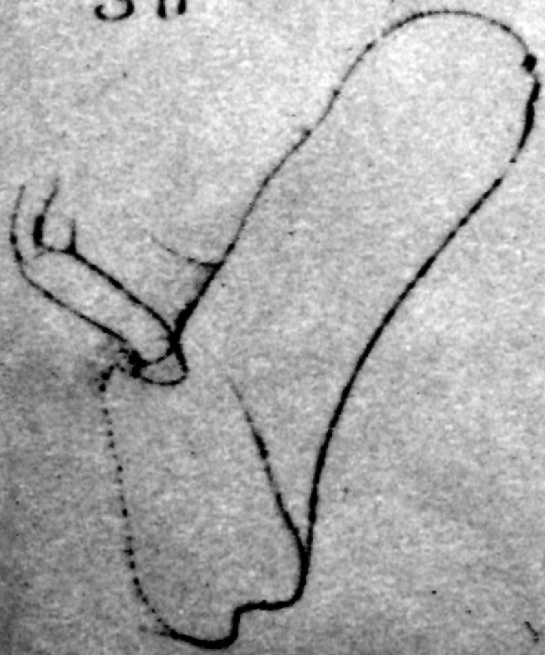
2 c.



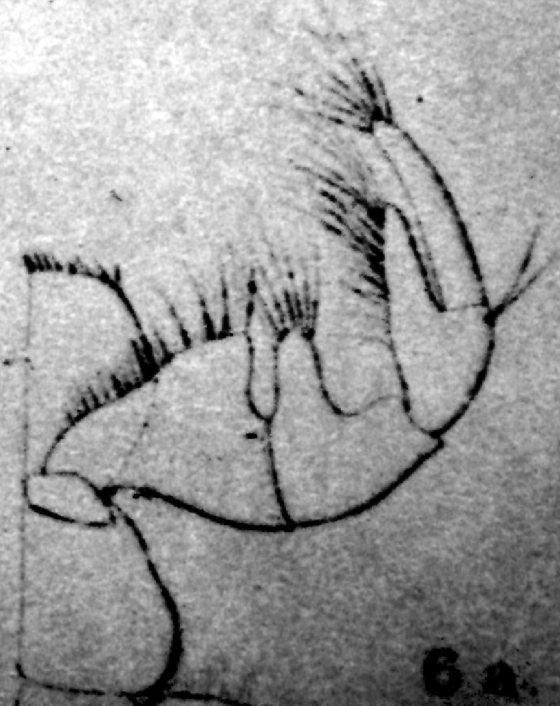
3 b.



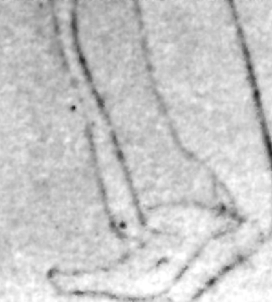
3 a.



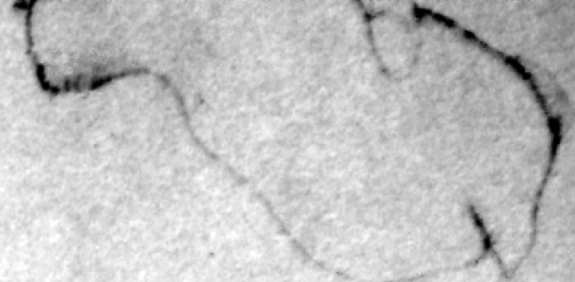
4 b.



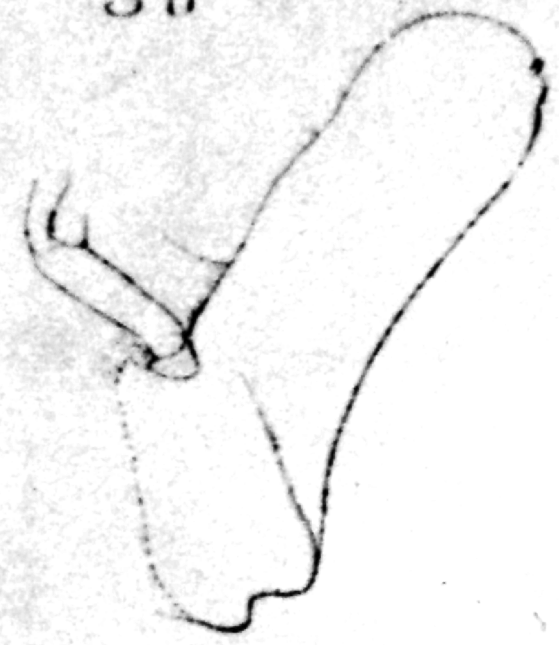
6 a.



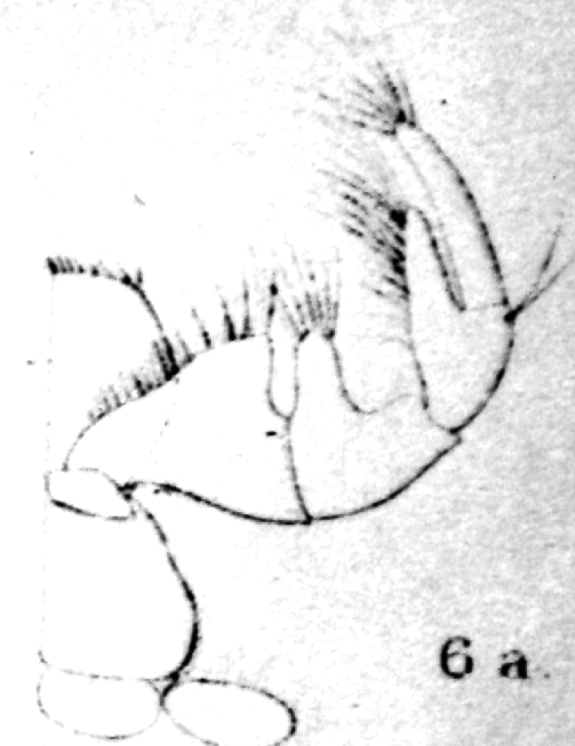
3 b



3 a



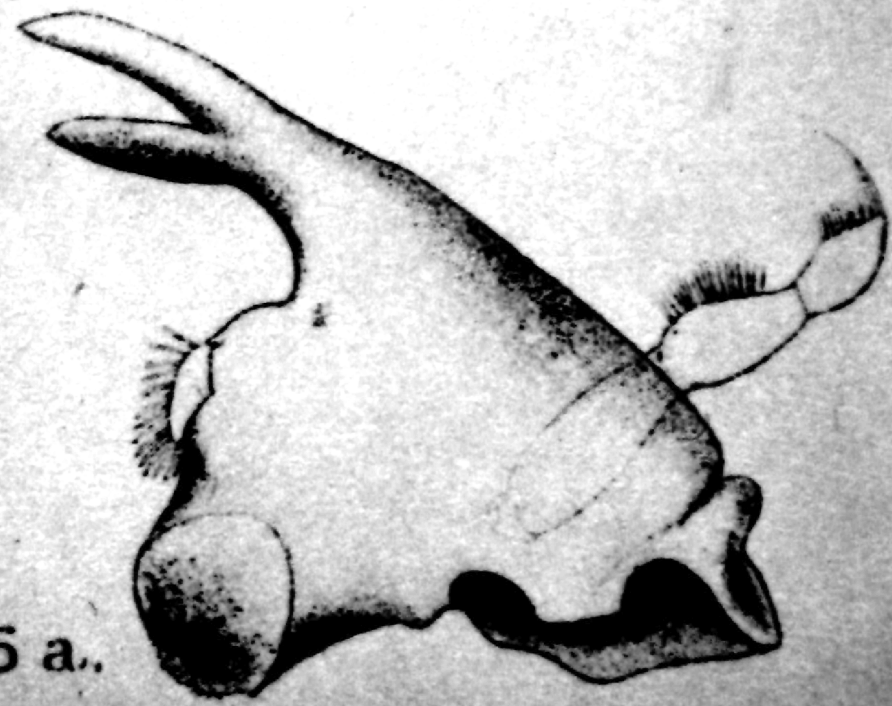
4 b.



6 a.

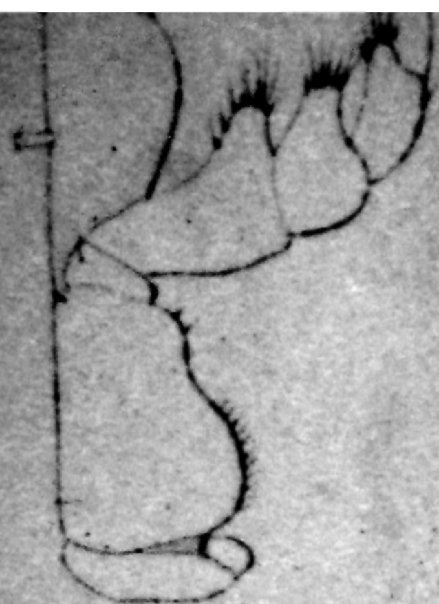


a.



5 a.

4 d.



3 d.

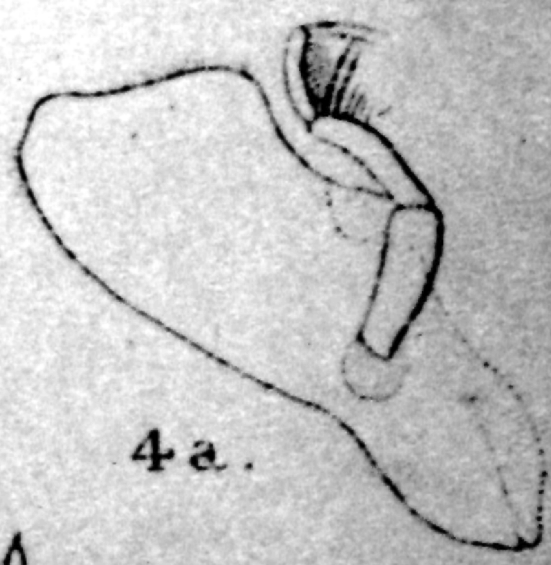


3 c.

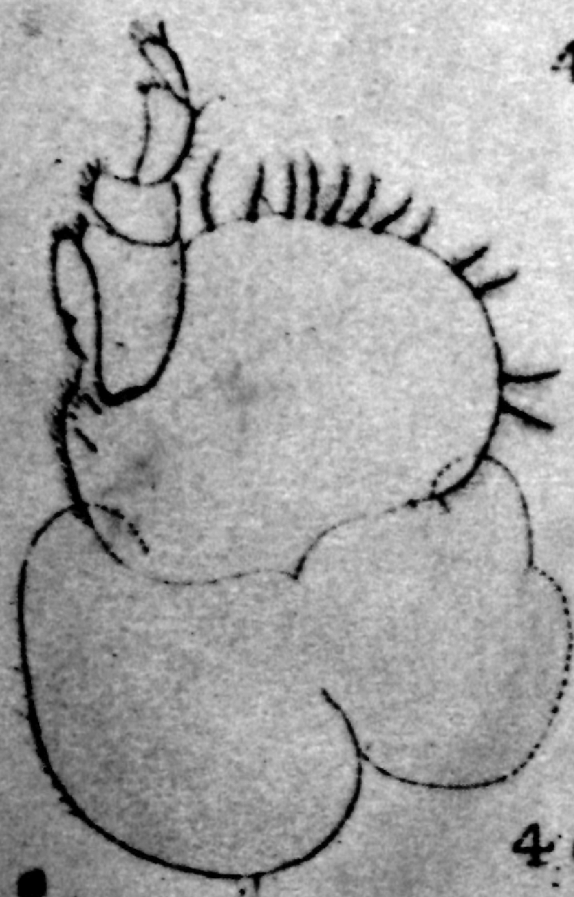
3



4 c.



4 a.

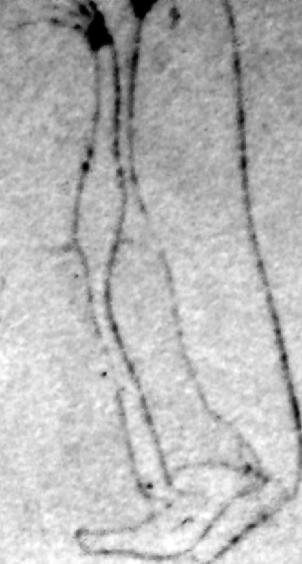


4 e.



4 d.

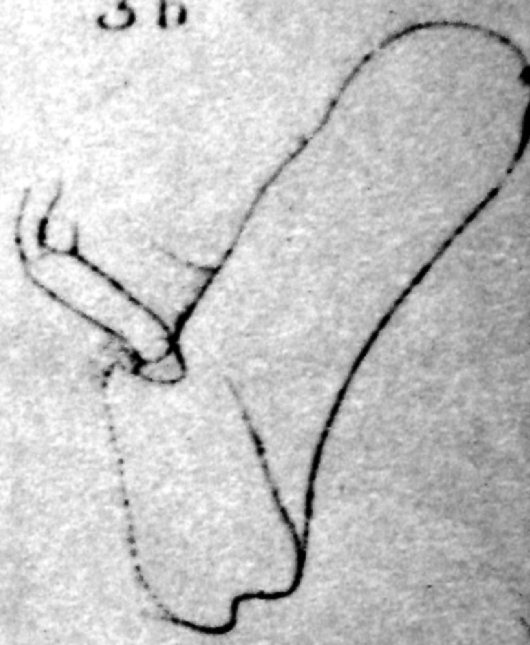
2 c.



3 b.



3 c.



4 b.



4 c.



4 a.

