

angle more acute, antennal notch deeper. (On the specimen the right inner supra-orbital lobe is broken). These characters agree with those described by Stimpson (1848, 1907), mentioned by Miers (1884), Henderson (1893), Alcock (1899), and illustrated by Henderson (1893, pl. 39, fig. 9), Stimpson (1907, pl. 10, fig. 4) and Sakai (1939, text-fig. 20, pl. 52, fig. 2 and 1965, pl. 49, fig. 2) for *nitida*.

Also its carapace is broader and front narrower than on the holotype. Measurements of the carapace of the holotype (1), the Puerto Galera's specimen (2) and the specimen identified *aff. nitida* (3) give the following ratios:

	(1)	(2)	(3)
carapace breadth/carapace length	1.14	1.19	1.10
frontal breadth/carapace length	0.40	0.38	0.40
frontal breadth/carapace breadth	0.35	0.32	0.37
fronto-orbital breadth/carapace breadth	0.55	0.53	0.55

The specimen of Puerto Galera has a carapace broader, and a front narrower, than the holotype of *marquesa* and the specimen of *aff. nitida*, which has the same frontal breadth as *marquesa* but a narrower carapace.

Rathbun (1902) indicates that on *nitida* "the fronto-orbital width is nearly two-thirds the full width of carapace" and on *hendersoni* "only half as great as that of carapace". By its narrower front as well as by the shape of its frontal margin the specimen of Puerto Galera is close to *hendersoni*. The chelipeds of *hendersoni* are slightly but clearly unequal on the photograph published by Rathbun (1906, pl. 14, fig. 2) and unfortunately the present specimen has only one cheliped. Besides, its male pleopod is so close to that of *marquesa* that at least provisionally it is considered as belonging to the same species. The name is a Spanish noble rank and recalls the area of the type material: Marquesas Island.

***Kraussia integra* (De Haan 1835)**

(Figs. 16, 17, 18, 23 I)

Cancer (Xantho) integer, De Haan, 1835, p. 63, pl. 13, fig. 6.

Actumnus integra, Richters, 1880, pl. 16, fig. 17, 18.

Kraussia integra, Rathbun, 1906, p. 873, pl. 14, fig. 3.—1911, p. 211.—Balss, 1922, p. 97 (no material).—1933, p. 29.—Gordon, 1931, p. 527 (in a list).—Sakai, 1934, p. 304, text-fig. 17a.—1936, p. 137, pl. 14, fig. 1, text-fig. 64.—1939, p. 429, pl. 52, fig. 1.—1965, p. 107, pl. 49, fig. 1.—Buitendijk, 1963, p. 253, fig. 1a.

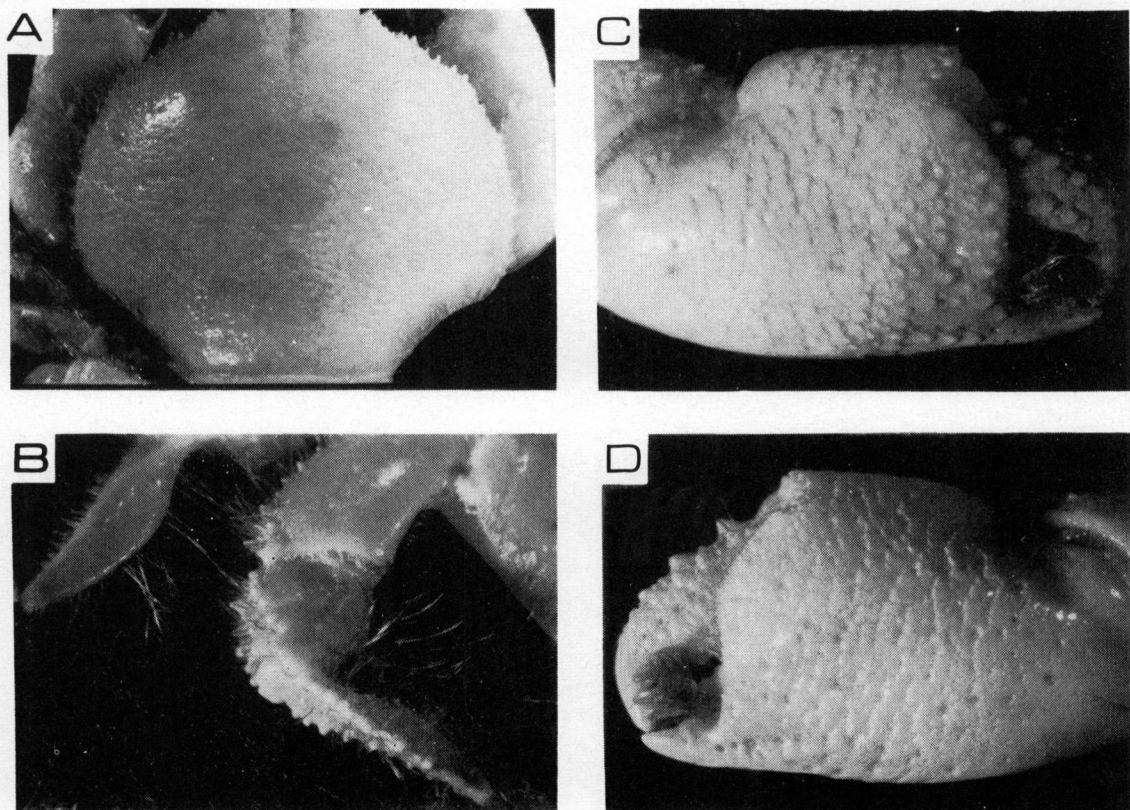


Figure 15.—*Kraussia marquesa*, WAM 264-70, male of cl:12.7, cb:14. A, dorsal view.—B, pereopods 4, 5.—C, right cheliped.—D, left cheliped.

Not *Kraussia integra*, Borradaile, 1902, p. 270 = *nitida* fide Rathbun 1902.

Not *Kraussia integra*, Alcock, 1899, p. 97 = *rastripes*.

Not *Kraussia integra*, Tweedie, 1950, p. 108 = *rastripes*.

Type locality: Japan.

Material.—WAM.134-70, male of cl:15.33, cb:17.33, another much smaller specimen, Loc: 7 miles 260° from Zal Island Pearl Bank, Sulu Arch., Col: B. R. Wilson on Pele Exped. 21/2/1964, 10 fathoms, lithothamnion and sand; WAM.271-70, female of cl:12, cb:13, with only one cheliped, Loc: Stn. 2 E. of Cape Poivre, 20° 53'S, 115° 20'E, Date coll: 24/8/1966, Hab: sand flats with rocks and sponges under stones, inter-tidal; WAM. 275-70, male of cl:10, cb:11 and one female of cl:13, cb:14, Loc: ½ mile S.W. of Don Can Is., Laparan Group, Sulu Arch., Source: B. R. Wilson on "Pele", Date coll: 21/2/1964, 30 faths., sand and lithothamnion; WAM. 276-70, damaged male of cl:9, cb:10.5, Loc: Sulu Archipelago, Source: B. R. Wilson on "Pele", Date coll: 2/3/1964; WAM. 277-70, male of cl:16, cb:19.5, Loc: 6-7 miles of Pearl Bank, Sulu Arch., 9-12 faths., coarse sand, Source: B. R. Wilson on "Pele", Date coll: 21/2/1964.

—Mariel King Memorial Expedition 1970: KR VI, north of Du Rowa Is., N. of Nuhu Rowa, Kai Islands, 5° 32'S, 132° 41'E; H3-10, 20 faths.,

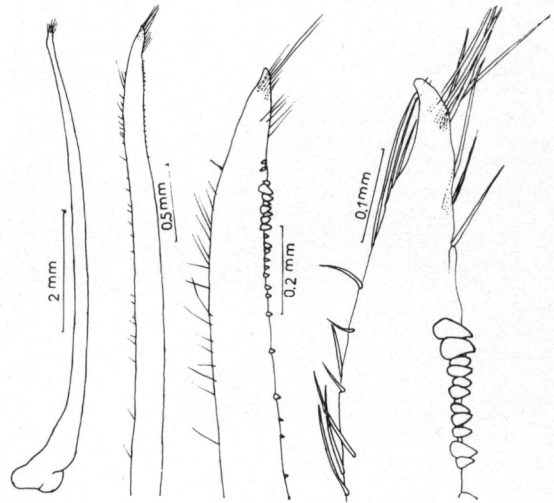


Figure 16.—Male pleopod 1 of *K. integra* WAM 277-70 of cl:17, cb:19.5.

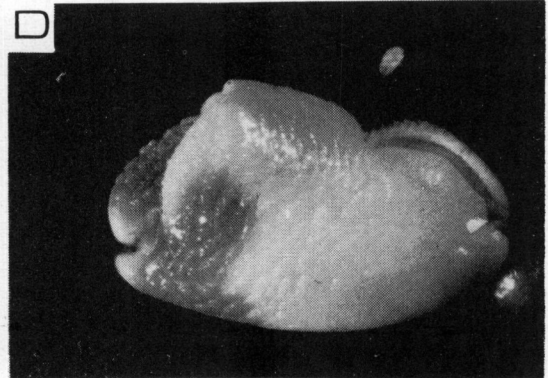
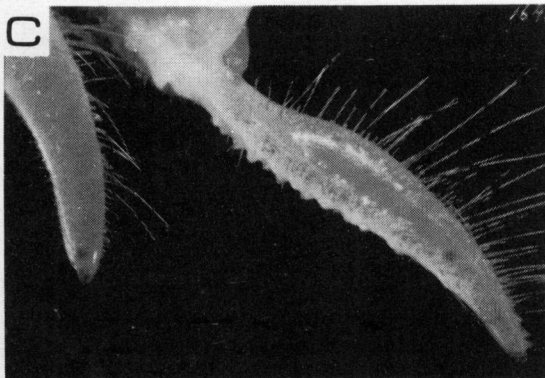
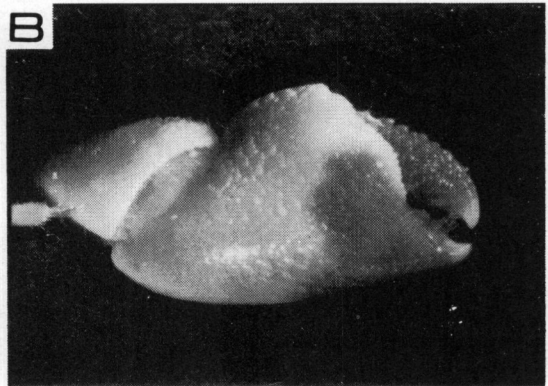
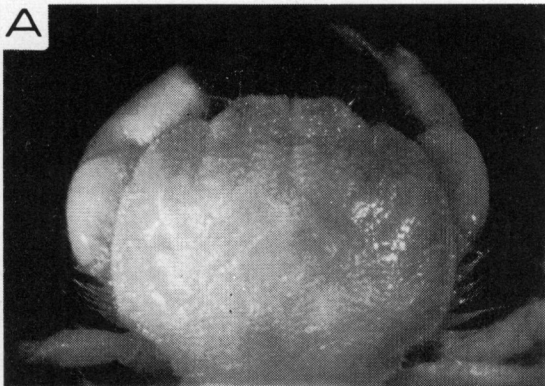


Figure 17.—*Kraussia integra*, WAM 277-70, male of cl:16, cb:19.5. A, dorsal view.—B, pereopods 4, 5.—C, right cheliped.—D, left cheliped.