

PLATE II

*Dromidiopsis dormia* (Linnaeus), Madagascar : A, male, cl. 114 mm (B. 6924) ; B, male, cl. 111 mm (B. 6925). (Note the obsolete third anterolateral tooth of the carapace in B.)

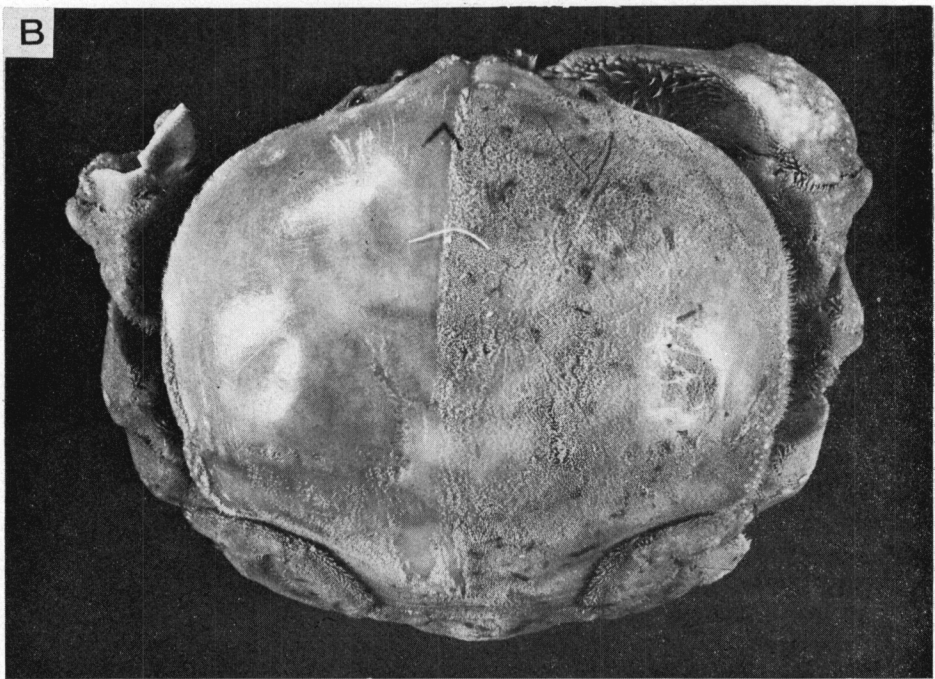
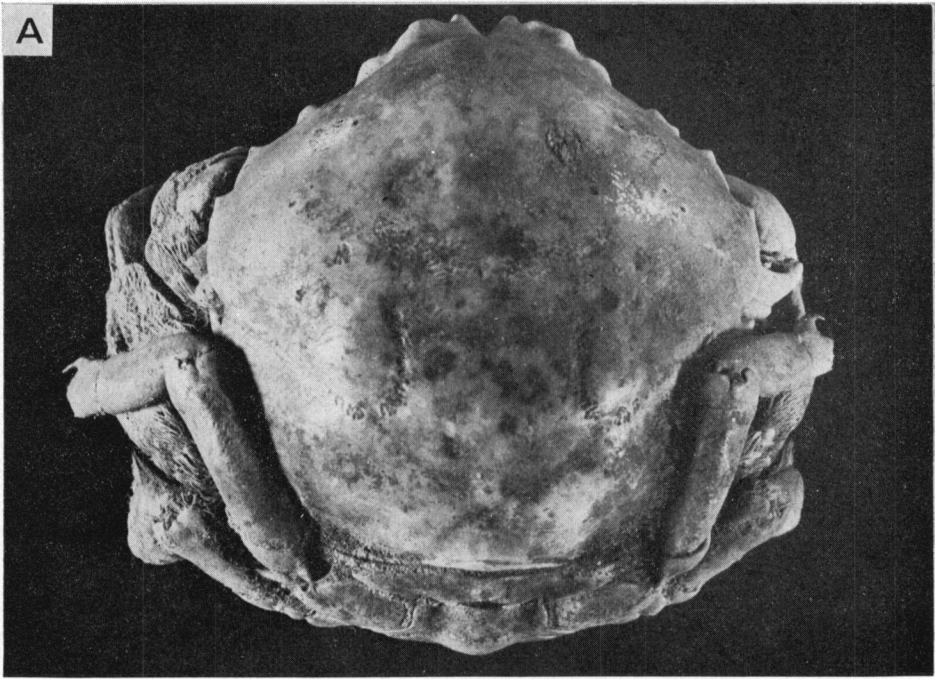
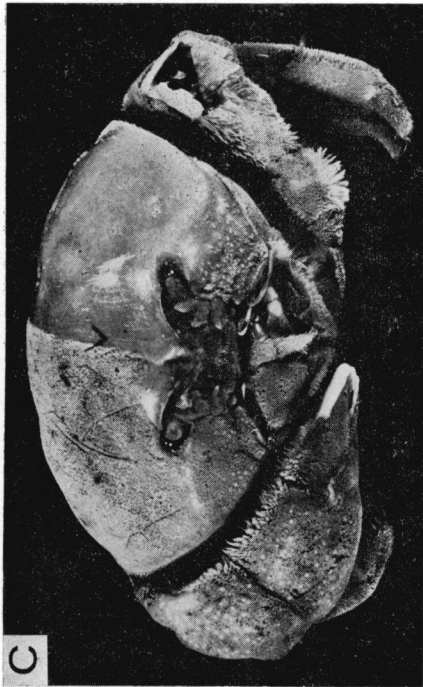


PLATE III

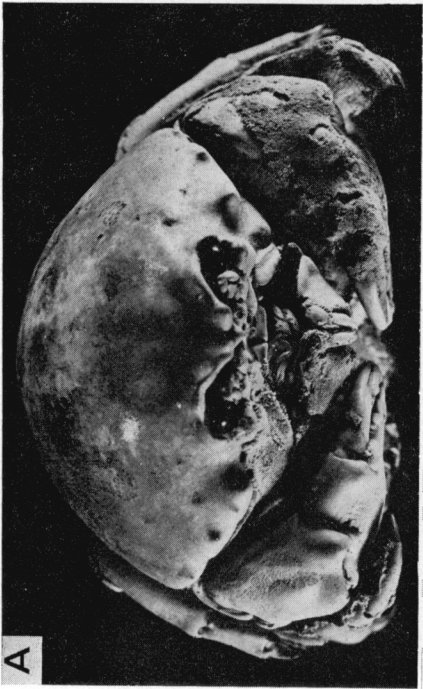
A, *Dromidiopsis australiensis* (Haswell), cl. 25 mm, Port Jackson, Australia (probably syntype) ; B, *Sphaerodromia nux* Alcock, cl. 51 mm, Madagascar (TAU).



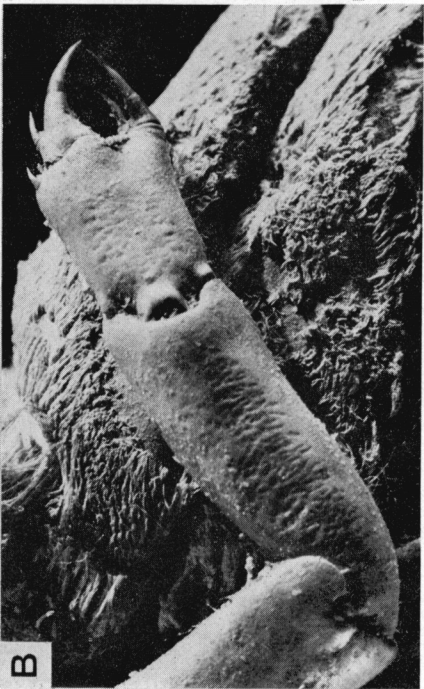
C



D



A



B

PLATE IV

*Dromidiopsis australiensis* (Haswell), cl. 25 mm, Port Jackson, Australia (probably syntype) : A, frontal view ; B, fifth pereiopod. — *Sphaerodromia nux* Alcock, cl. 51 mm, Madagascar (TAU) : C, frontal view ; D, chela (note the obsolete dentation of the cutting edges).