

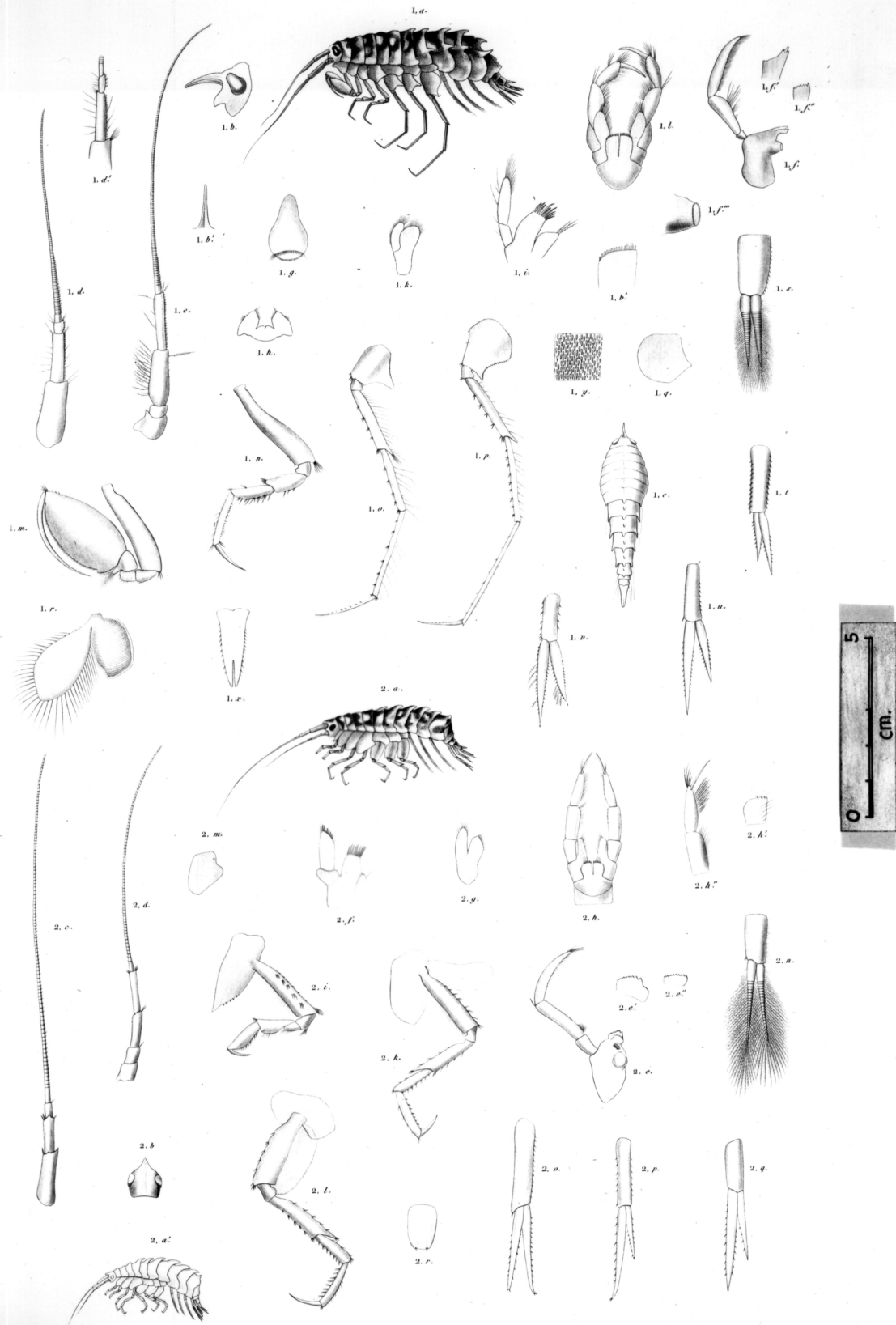


C. Therman. del.

Visto sc.

Fig. 1, a-v. *MYSIS FLEXUOSA*, Müll.

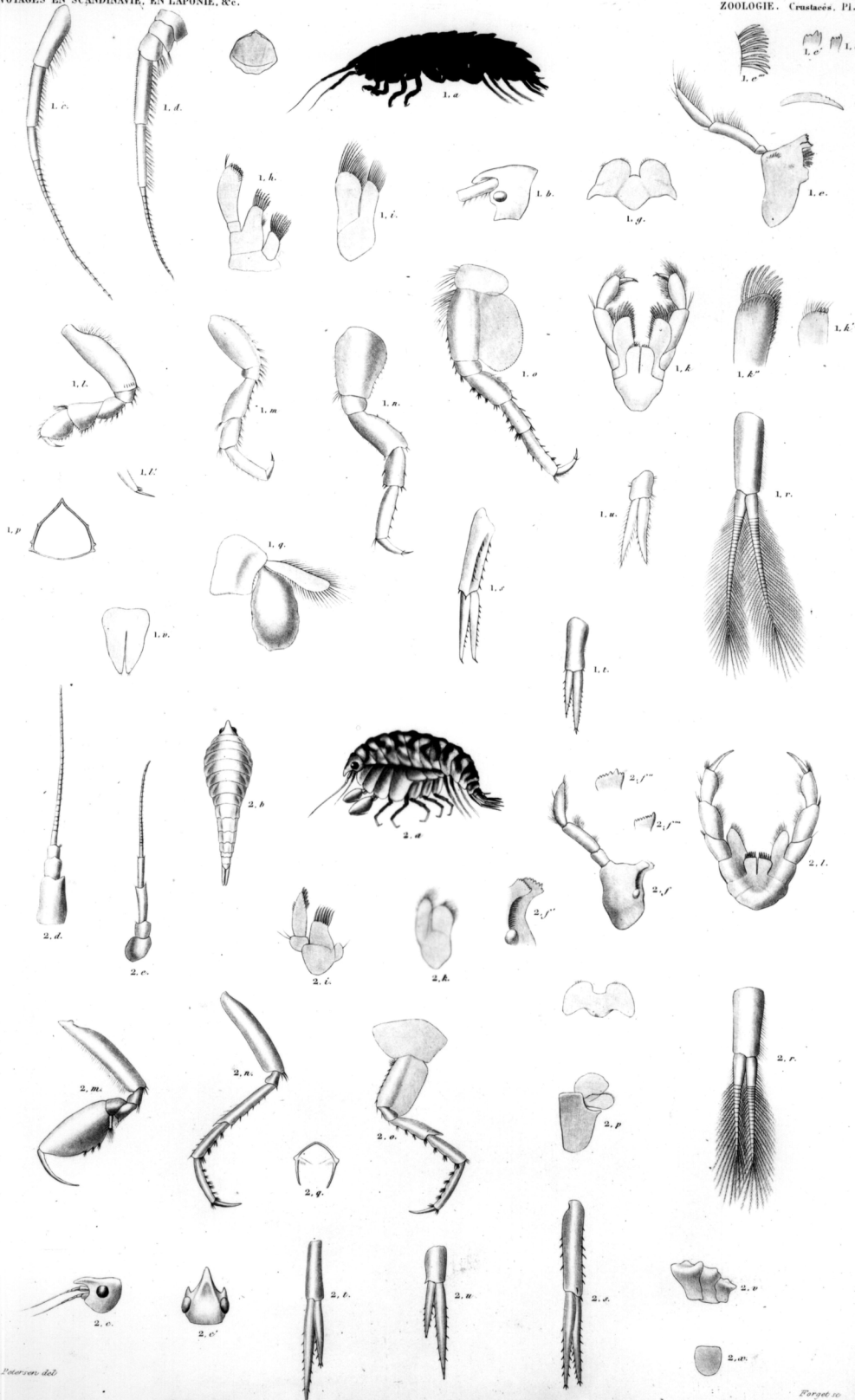
Fig. 2, a-c. et Fig. 3, a-f. *EMBRYONES MYSISIS*, Fleming.



C.L. Deussen del.

Requet sc.

Fig. 1. a. y. AMPHITOE EDWARDSII, Sab. Fig. 2. a. y. AMPHITOE PULCHELLA, Ke. sp. n.



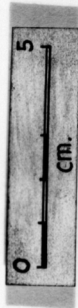
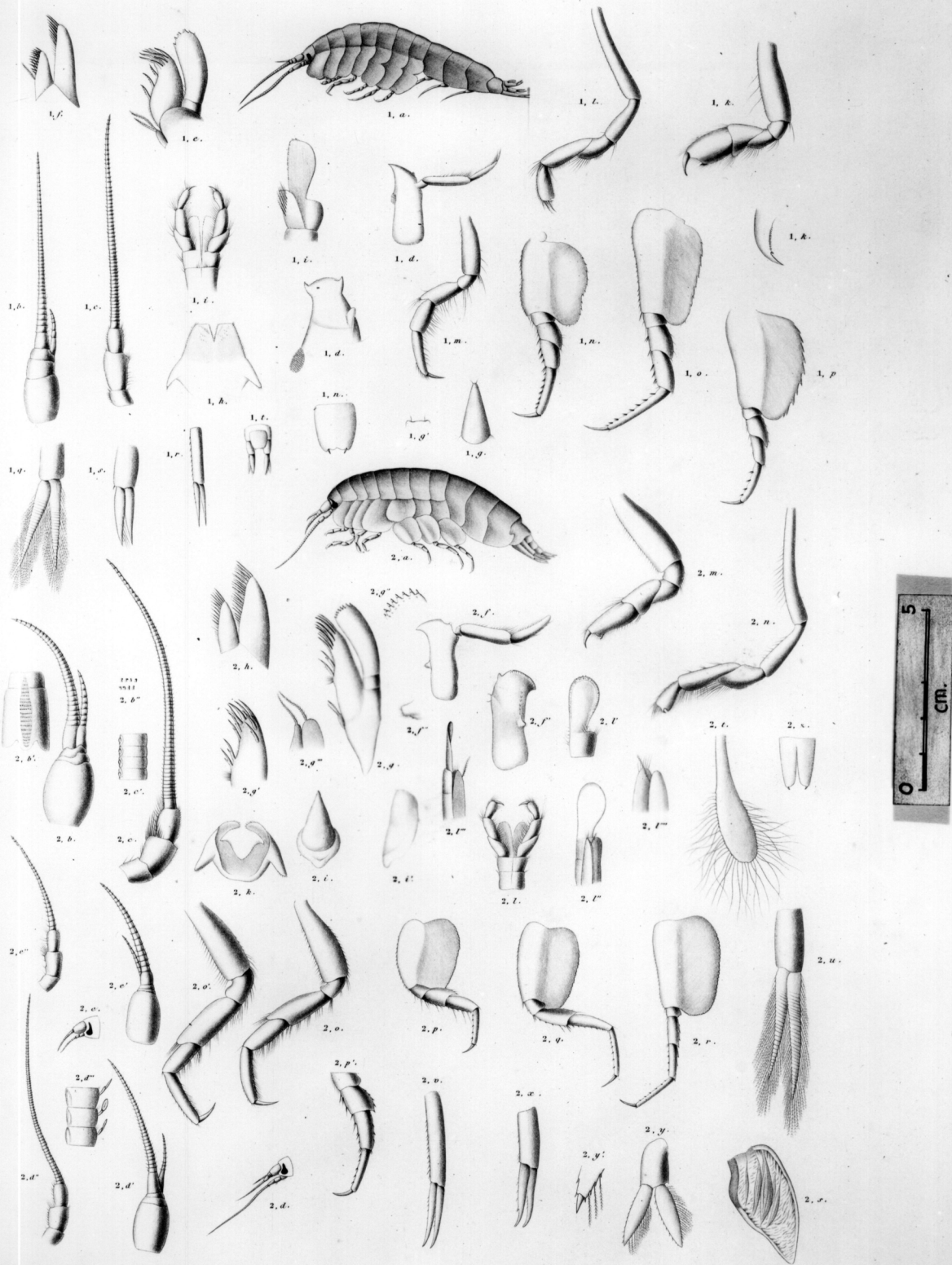
C. L. Petersen del.

Arthur Bertrand sculp.

Fig. 1. a-w. AMPHITOE CARINATA. Kr. Fig. 2. a-w. AMPHITOE PANOPLA. Kr.

Forget sc.

Bouquard imp.



C. Thomsen del.

J. Thomas sc.

Fig. 1. a-d. ANONYX LITTORALIS, Kr. Nov. Sp.

Fig. 2. a-s. ANONYX AMPULLA, Phipps.