

# ZOOLOGISCHE MEDEDELINGEN

UITGEGEVEN DOOR HET

RIJKSMUSEUM VAN NATUURLIJKE HISTORIE TE LEIDEN  
(MINISTERIE VAN WELZIJN, VOLKSGEZONDHEID EN CULTUUR)

Deel 60 no. 7

2 april 1986

ISSN 0024-0672

## A NEW GENUS AND SPECIES OF SUBTERRANEAN SHRIMP FROM WESTERN AUSTRALIA (CRUSTACEA: DECAPODA: ATYIDAE)

by

L.B. HOLTHUIS

Holthuis, L.B.: A new genus and species of subterranean shrimp from Western Australia (Crustacea: Decapoda: Atyidae).

Zool. Meded. Leiden 60 (7), 2-iv-1986: 103-111, figs. 1-2. — ISSN 0024-0672.

Key words: Crustacea Decapoda; Atyidae; Paratyinae; Caridellinae; Typhlatyinae; *Pycneus morsitans*; new genus; new species; cave shrimp; Western Australia.

Description of a new genus and species of stygobiont shrimp from a cave in the Gibson Desert of Western Australia, showing aggressive behaviour.

L.B. Holthuis, Rijksmuseum van Natuurlijke Historie, P.O. Box 9517, Leiden, The Netherlands.

In the last decennia the exploration of the subterranean aquatic habitats has increased in intensity, which resulted in the discovery of a surprisingly great number of stygobiont shrimps.

Until 1960 no subterranean shrimps were known from Australia. In that year a new genus with two new species was described (Holthuis, 1960). Four years later two more Australian species were described (Williams, 1964). The first two originated from the northern part of Western Australia, the other two from the Northern Territory. Now a fifth species, again from Western Australia, is described in the present paper, based on three specimens collected in a cave in the Gibson desert. Unfortunately all three specimens are females and not in optimal condition, but the material is quite sufficient to permit its recognition as a new genus and species.

I want to express my gratitude to Mrs. Diana S. Jones, Department of Crustacea, Western Australian Museum Perth, Australia, for the privilege to examine this interesting material, which forms part of the collection of the Western Australian Museum. Mrs. Jones also provided me with detailed information about colour, habits, and habitat of the species.

**Pycneus** gen. nov.

Definition. — A whitish atyid shrimp. Eyes degenerated without pigment. Rostrum very short, wider than long, depressed, unarmed. Carapace without any spines. Antennal flagella very long. Second maxilliped with podobranch, third with small arthrobranch. Pereiopods without exopods or arthrobranches. Epipods absent from fourth and fifth pereiopods. Pleurobranchs present at the base of the first to fourth pereiopods. Fingers of chelipeds with sharp-hooked tips and relatively few hairs. Diaeresis with numerous spinules. Behaviour aggressive.

Type species. — *Pycneus morsitans* new species.

Etymology of generic name. — *Pycneus*, quasi-latinization of the Dutch word "pikneus" (= pecking nose), name for a fierce water ghost biting little children, invented to scare (skippers-)children from getting (falling) into the water as long as they cannot swim.

Gender of generic name. — Masculine.

Remarks. — *Pycneus* belongs to the subfamily Caridellinae of the family Atyidae. This subfamily is characterized by having no exopodites on the pereiopods (except *Caridinides*, which has an exopod on the first pereiopod only); neither are there arthrobranches at the bases of the pereiopods. Furthermore the carapace has no supra-orbital spine, and the diaeresis bears several spinules.

This subfamily was dealt with by Bouvier (1925: 41) under the name "série caridellienne"; he also recognized a "série paratyienne" and a "série caridinienne". A recent review of these series was given by Monod & Cals (1970), who also included in their revision the "série typhlatyienne" first proposed by Holthuis (1965: 6). The various series in my opinion should be elevated to the subfamily level. The série paratyienne then becomes Paratyinae **subfam. nov.**, the série caridellienne Caridellinae **subfam. nov.**, the série typhlatyienne, Typhlatyinae **subfam. nov.** The série caridinienne becomes the nominate subfamily Atyinae De Haan, 1849, as it contains the genus *Atya* Leach, 1816. For the subfamily containing the genus *Xiphocaris* Von Martens, 1872 (Bouvier's, 1925, "forme acanthéphyroïde") the subfamily name Xiphocaridinae Ortmann, 1895, is available.

The subfamily Caridellinae contains the following genera listed by Monod & Cals (1970: 101) for the série caridellienne: *Atyella* Calman, 1906; *Caridella* Calman, 1906 (type genus); *Caridinides* Calman, 1926; *Caridinopsis* Bouvier, 1912; *Halocaridina* Holthuis, 1963; *Limnocaridella* Bouvier, 1913; *Limnocaridina* Calman, 1899; and *Parisia* Holthuis, 1956. After 1970 the following genera, also belonging to this subfamily, were described: *Halocaridinides*

Fujino & Shokita, 1975 (with its synonym *Palauatya* Hart, 1980) and *Edoneus* Holthuis, 1978. Whether *Typhlocaridina* Liang & Yan, 1981, belongs in the present subfamily or in the Atyinae cannot be decided from the original description (Liang & Yan, 1981: 31–35, figs, 1–19), as nothing is said about the branchial formula. From the figures it is clear that the legs have no exopods, and that the diaeresis bears spinules; the dentition of the rostrum shows some resemblance to that of *Caridinopsis*.

*Pycneus* differs from the other genera in the peculiar shape of the chelipeds in which the fingers are compressed and have the tips sharply hook-shaped. The depressed rostrum also is a characteristic feature. *Pycneus* resembles *Atyella*, *Caridella*, *Halocaridina*, *Halocaridinides*, *Limnocaridella* and *Limnocaridina* in having no pleurobranch at the base of the fifth pereopod, and differs in that respect from *Caridinopsis*, *Edoneus*, *Parisia*, and possibly *Caridinides*. The podobranch of the second maxilliped and the arthrobranch of the third are absent in *Edoneus*, *Halocaridina*, *Halocaridinides* and *Limnocaridina*. In *Atyella*, *Caridella* and *Limnocaridella* a rudimentary arthrobranch seems to be present at the third maxillipede. In *Caridinopsis* the carpus of the first cheliped is not excavated anteriorly. Epipodites are absent from all pereopods in *Limnocaridina*, from the last three legs (P3 to P5) in *Caridinides*, and from P5 only in *Caridinopsis*, *Edoneus* and *Parisia*. In *Atyella*, *Caridella*, *Halocaridina*, *Halocaridinides* and *Limnocaridella*, as well as in the present genus, the last two legs (P4 and P5) are without epipodites.

The genera *Edoneus*, *Halocaridina*, *Halocaridinides*, and some species of *Parisia* have the rostrum unarmed as in *Pycneus*, in the other caridelline genera teeth or spines are present on the rostrum.

Several of the genera (*Edoneus*, *Halocaridina*, *Halocaridinides*) and some species of *Parisia*, like the present genus, belong to the stygofauna. In all the eyes are reduced; in *Halocaridina*, *Halocaridinides* and in two of the species of *Parisia* traces of pigment remain in the eyes, in *Edoneus*, *Pycneus* and two other species of *Parisia* all pigment seems to be lacking.

So far only one species is known of the present genus:

***Pycneus morsitans* spec. nov.**

(figs. 1-2)

Material. — Cave at Munjingerra, Gibson Desert, Western Australia, at about 22° 30' S 124° 10' E; 25 May 1985; leg. Mr. Harvey Webster. - 3 ♀♀, cl. 4-7 mm. Western Australian Museum, no. 615-85. Holotype is the second largest specimen (cl. 5 mm).

Etymology. — The latin word *morsitans* means biting, and refers to the aggressive behaviour of the species.

Description. — The carapace is thin and very flexible; in most specimens it has become entire or partly loose. There are no spines at all on the carapace. The rostrum is a shallow, rounded, dorsoventrally depressed median lobe on the anterior margin of the carapace; it hardly reaches beyond the eyes. The lower orbital angle is indicated by a shallow, indistinct convexity of the anterior margin of the carapace. The pterygostomian angle is broadly rounded.

The pleura of the abdominal somites are rounded. The sixth somite is 1.5 times as long as the fifth and 0.6 times as high as long. The pleura of the sixth somite are narrowly rounded, the posterolateral angles more broadly so. The telson is slightly shorter than the sixth abdominal somite. It narrows gradually to a rather wide, broadly rounded posterior margin, which bears eight spines. The outer of these spines are shortest, being less than half as long as the next pair, which are the longest. The four intermediate spines are somewhat shorter than the longest pair. The upper surface of the telson carries two or three pairs of spines, the anterior of which is placed slightly before the middle of the telson; the next pair is somewhat closer to the anterior pair than to the posterior margin of the telson.

The eyes lack all pigment. They are bullet-shaped and hardly reach beyond the rostrum if at all, and are largely covered by it.

The stylocerite is bluntly pointed and reaches beyond the middle of the basal segment of the antennular peduncle. The outer anterolateral angle of the basal segment is forwards-produced to about the middle of the second segment. The second segment is about half as long as the first and about as long as the third. The flagella are long and simple, the outer is wider (especially in the basal part) and longer than the inner.

The scaphocerite fails to reach to the end of the antennular peduncle. It is somewhat more than twice as long as wide. The lamella reaches distinctly beyond the final tooth, which is quite broad. The outer margin of the scaphocerite is slightly sinuous. There are no spines on the antennal peduncle, neither is there a finger-like process on the inner margin (a character brought to my attention by Miss A. Gurney, in litt.). The flagellum is very long, distinctly longer than the whole body.

The mandibles have the incisor process with a number of rather small, blunt teeth. The molar process has a ribbed surface. The right mandible has a small lobe, with setae apically, placed between the two processes; the left mandible has short spinules there.

In the maxillula the upper lacinia is narrow and with numerous short spinules on the inner margin; the lower lacinia is almost circular; the palp is elongate and rounded at the top, with a few minute spinules in the inner distal part.

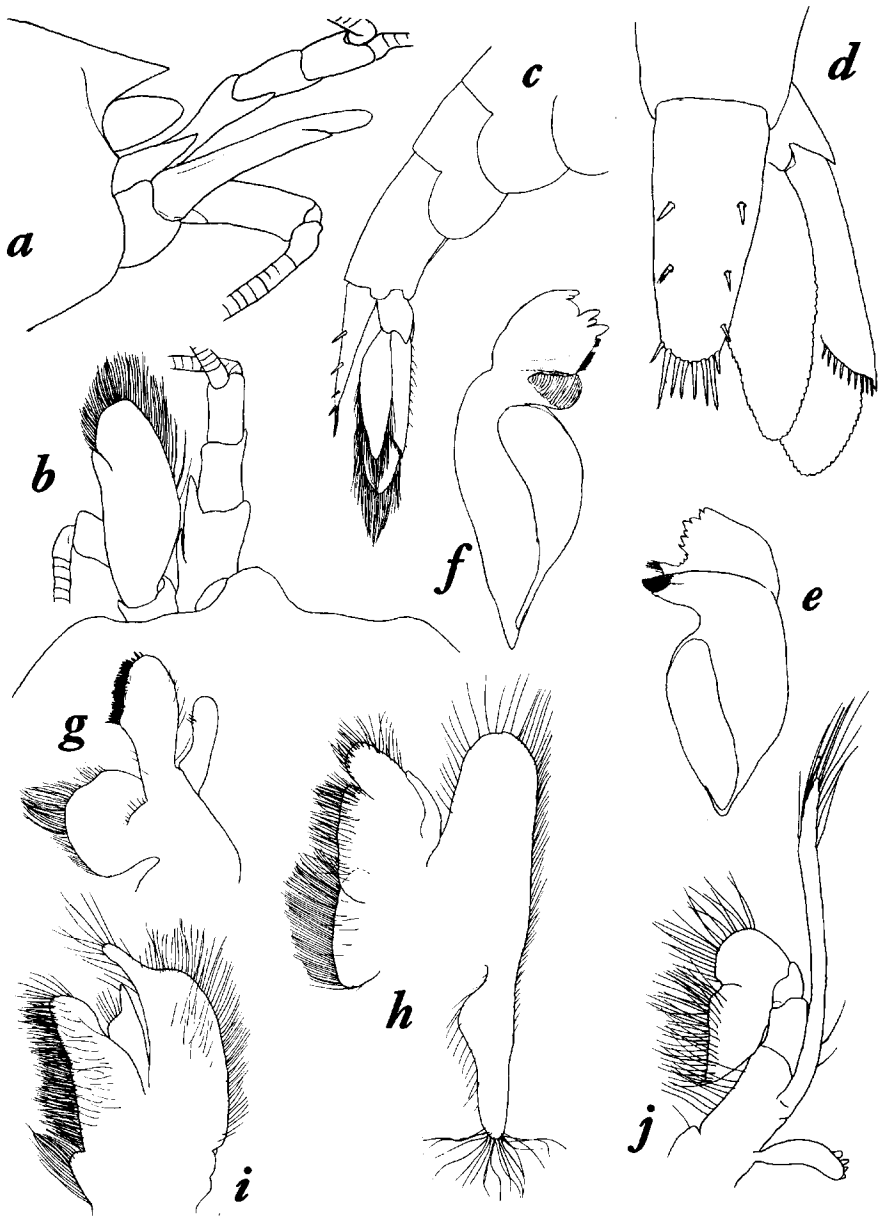


Fig. 1. *Pycneus morsitans* new genus, new species, female. a, anterior part of body in lateral view; b, rostrum and left cephalic appendages in dorsal view; c, abdomen in lateral view; d, telson and right uropod in dorsal view; e, right mandible; f, left mandible; g, maxillula; h, maxilla; i, first maxilliped; j, second maxilliped. a-c,  $\times 12.5$ ; d-j,  $\times 25$ .

The maxilla has the scaphognathite large and ending posteriorly in an elongate lobe crowned by a tuft of long, frizzly hairs. The palp is slender. The upper endite is sharply divided into two lobes, the upper of which is narrow and reaches slightly beyond the lower lobe, which is about as wide as the entire lower endite.

The first maxilliped has the lower endite small and protruding beyond the larger upper. The palp is wide, ending in a narrow lobe. The exopodite has the caridean lobe wide, the flagellar part is short and blunt. Below the exopod are some very shallow lobes; it is not clear whether one of these is an epipod.

The second maxilliped is of the usual shape. The line between the distal two segments is only partially visible. The exopod is strong and reaches well beyond the endopod. The epipod is distinct and bears a small podobranch.

The third maxilliped reaches with about half the distal segment beyond the antennular peduncle. The ultimate segment is slightly shorter than the penultimate. It gradually narrows into a sharp point and bears some small spines in the distal half. The proximal half shows a dense pubescence on the posterior margin. The penultimate segment is slightly wider than the base of the ultimate, but narrower than the antepenultimate; it bears hairs, some of which are placed in transverse rows in the posterior half. The antepenultimate segment is shorter than the penultimate. The exopod is well-developed and reaches beyond the base of the penultimate segment. A strap-like epipod is present as well as a small but distinct arthrobranch.

The branchial formula of the species is as follows:

	maxillipeds			pereiopods				
	1	2	3	1	2	3	4	5
pleurobranches	—	—	—	1	1	1	1	—
arthrobranches	—	—	1	—	—	—	—	—
podobranchs	—	1	—	—	—	—	—	—
epipods	?	1	1	1	1	1	—	—
exopods	1	1	1	—	—	—	—	—

Exopods are present on the maxillipeds only, not on the pereiopods. Epipods are lacking altogether from the fourth and fifth pereiopods, their presence at the first maxilliped is doubtful. Pleurobranches are present only at the bases of the first four pereiopods. As already mentioned above, a small arthrobranch is present on the third and a podobranch on the second maxilliped.

The first pereiopod is short and reaches only as far as the end of the anten-

nal peduncle. The chela is most peculiar as the fingers are somewhat compressed and end in a sharp, hook-shaped claw. The tufts of hair, so characteristic for Atyidae, are rather thin here and not very conspicuous. Most of the hairs are plumose and rather slender, but behind the tip of the fixed finger there is a tuft of shorter, stiffer hairs, which have one side serrate. The cutting edges of the fingers are unarmed. The fingers themselves are as long as the palm, which is somewhat swollen posteriorly. The carpus is slightly more than half as long as the chela; it is deeply excavate anteriorly for the reception of the basal part of the chela. It is less than twice as long as high and tapers towards the base. The following segments are short.

The second pereopod is more slender than the first. It reaches with the fingers beyond the antennal peduncle. The chela is similar to that of the first pereopod, only slightly more slender. The carpus is elongate, it is about three times as long as high and only slightly shorter than the chela; it is not excavated anteriorly and very gradually narrows posteriorly. The merus is about as long as the carpus and longer than the ischium.

The third pereopod reaches with the greater part of the propodus beyond the first pereopod. The dactylus is slender, being more than three times as long as high, and slightly less than  $1/3$  of the length of the propodus. It ends in a sharp tooth and has about six or seven spinules on the posterior margin. The propodus is long, its posterior margin carries many spine-like hairs or small spinules. The carpus is almost  $2/3$  as long as the propodus and bears no spine. The merus is somewhat longer and broader than the propodus and shows two strong, movable spines on the posterior half of the outer surface; in one specimen an additional spine is placed close to the proximal of the two spines. The ischium is about half as long as the merus; in some specimens it bears a large, movable spine, which is absent in others. A strap-like epipod is present.

The fourth leg reaches with the dactylus or slightly more beyond the first leg. It is very similar to the third pereopod, but lacks the epipod; in all specimens a movable spine is present on the ischium.

The fifth pereopod also overreaches the first with the dactylus. The dactylus is long and slender, measuring more than  $1/3$  of the length of the propodus. It ends in a sharp point and carries on its posterior margin about 60 small, comb-like arranged spinules. The posterior margin of the propodus carries more than 20 small spinules. The carpus is about half as long as the propodus, and, like in the previous two legs, bears two strong, movable spines in the posterior half of the outer surface. The ischium is about half as long as the merus; in some specimens it bears a large, movable spine.

The first pleopod of the female has the endopod ending in a narrowly

