

The two species show no apparent differences in relative growth of the various dimensions of the carapace or in the number and arrangement of tubercles and/or spines on the anterior border of the mouthfield and suborbital border (Table 3, Fig. 12).

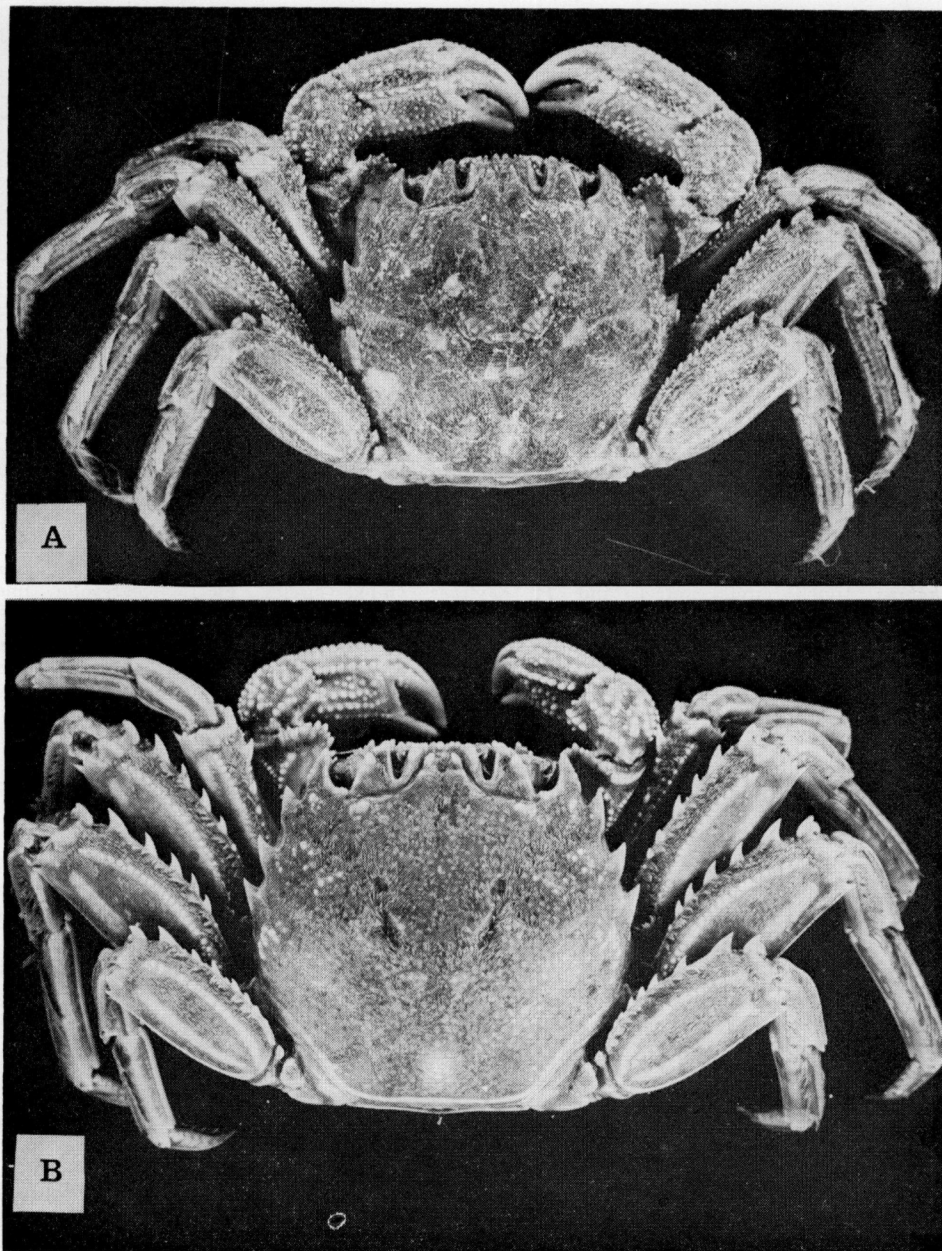


FIG. 14.—*Plagusia* species, dorsal view. A, *P. chabrus*, male, c.l. 63 mm, Castlepoint, New Zealand (DM Cr. 1223). B, *P. dentipes*, male, c.l. 45 mm, Easter Is., Pacific Ocean (USNM 33234).

TABLE 3.—Number of tubercles on anterior border of mouthfield in <i>Plagusia</i> species				
Species	N	Mean	S.E.	Range
<i>P. chabrus</i>	68	9.4	0.3	4–16
<i>P. dentipes</i>	18	7.8	0.4	6–12

TABLE 4.—Differences between *Plagusia chabrus* and *P. dentipes*

Feature	<i>Plagusia dentipes</i>	<i>Plagusia chabrus</i>
No. of frontal tubercles	mean 7.70 ± 1.302 in 20 specimens	mean 13.29 ± 3.677 in 52 specimens
Supraorbital margin	strongly tuberculate, not smooth	smooth margins
Surface of the carapace	very strongly tuberculate and naked behind the orbits and on both the hepatic and branchial regions (i.e., antero-postero-laterally) (Fig. 14b)	surface mostly smooth, naked, blunt tubercle just behind and slightly medial to, each orbit; 3 short, oblique, weakly tuberculate ridges on branchial regions postero-laterally close to edge. Surface covered everywhere by a mat of short curled hairs.
Inner (vert.) lobe of basal antennal article	only one spine on tip (Fig. 7h)	terminating in about three edge minutely spinulous. spinules or tubercles, medial
Ambulatory meri	a few very strong spines on the dorsal border (5–7, average 6, the number not increasing with size) and a strong terminal spine present on the ventral edge posteriorly (Fig. 8g; 24)	Dorsal border bearing numerous short, compressed, distally curved, sharp spines, the number increasing with size.
Thoracic sternum of male	naked areas very extensive and strongly tuberculate (Fig. 15B)	covered by short curled hairs, surface close to edge of each sternite usually naked and smooth; tuberculate lobules sometimes projecting in from edge.
Male abdomen	naked areas very extensive (Fig. 15B)	surface covered by a fine mat of hairs leaving naked only a broad transverse line across each segment not far from base and another close to distal edge, the two joined by a central longitudinal naked ridge, a naked area also around lateral edge.

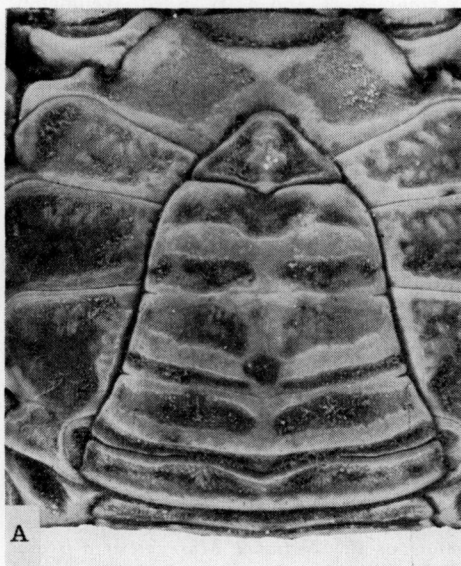


FIG. 15.—*Plagusia* species, male abdomen. A. *P. chabrus*. B. *P. dentipes*. Same specimens as in Fig. 14.

P. dentipes thus appears quite definitely to be a valid species. It shows much less variation than does *P. chabrus* and its resemblance in some characters (e.g., spinulation of the front and spination of the dorsal border of the ambulatory meri) to juveniles of *P. chabrus* is striking. A very good coloured illustration of *P. dentipes* has recently been given by Sakai (1965, pl. 99).

ACKNOWLEDGMENTS

This study was carried out at the University of Tasmania and formed part of a thesis submitted in fulfilment of the requirements for a Ph.D. at that University in 1966. I thank Dr E. R. Guiler for his supervision and Dr I. S. Wilson for advice.

Drs J. C. Yaldwyn (formerly Australian Museum, Sydney), R. W. George (Western Australian Museum, Perth), R. K. Dell (National Museum, Wellington), J. R. Grindley (South African Museum, Cape Town) and Raymond B. Manning (Smithsonian Institution, kindly provided collections under their care. I thank Drs L. B. Holthuis (Leiden), R. W. Ingle (London) and Mme Danièle Guinot (Paris) for information on type material.

REFERENCES

- BALSS, H. 1935. Brachyura of the Hamburg Museum expedition to south-western Australia, 1905. *Journal and Proceedings of the Royal Society of Western Australia* 21: 113-51, 3 figs, pl. XIII.
- BANERJEE, S. K. 1960. Biological results of the Snellius expedition. 18. The genera *Grapsus*, *Geograpsus* and *Metopograpsus*. *Temminckia* 10: 132-99, 6 figs.
- BARNARD, K. H. 1950. Descriptive catalogue of South African decapod Crustacea (Crabs and Shrimps). *Annals of the South African Museum* 38: 1-837, 154 figs.
- BENNETT, E. W. 1964. The marine fauna of New Zealand: Crustacea Brachyura. *New Zealand Department of Scientific and Industrial Research Bulletin* 153: 1-120, 141 figs.
- CANO, G. 1889. Crostacei Brachiuri ed Anomuri raccolti nel viaggio della R. Corvetta "Vettor Pisani" intorno al globo. *Bollettino della Società di Naturalista i Napoli* 3: 76-106, 169-269, 1 pl.
- CAPART, A. 1951. Crustacés décapodes brachyures. In *Résultats Scientifiques Expédition Océanographique Belge dans les Eaux Côtières Africaines de l'Atlantique Sud* (1948-1949) 3(1): 11-205, 80 figs, 3 pls.
- CHILTON, C. 1911. The Crustacea of the Kermadec Islands. *Transactions of the New Zealand Institute* 43: 544-73.
- CHILTON, C. and BENNETT, E. W. 1929. Contributions for a revision of the Crustacea Brachyura of New Zealand. *Transactions of the New Zealand Institute* 59: 731-78.
- DANA, J. D. 1852. Crustacea. In United States exploring expedition during the years 1838-1842 under the command of Charles Wilkes, U.S.N. C. Sherman, Philadelphia. Vol. 13: pp. XIII, 1618. Atlas (1855), pp. 27, 96 pls.
- DELL, R. K. 1965. *Nature in New Zealand. Native crabs*. A. H. and A. W. Reed, Wellington: pp. 64, illus.
- 1968. Notes on New Zealand crabs. *Records of the Dominion Museum, Wellington* 6: 13-28, 3 figs.
- FABRICIUS, J. C. 1793. *Entomologia systematica emendata et aucta, secundum classes, ordines, genera, species, adjectis synonymis, locis, observationibus, descriptionibus*. C. G. Proft, Hafnia. Vol. 2: pp. VIII, 1519.
- FULTON, S. W. and GRANT, F. E. 1906. Census of the Victorian decapod Crustacea. Part 1. Brachyura. *Proceedings of the Royal Society of Victoria* (2), 19: 16-20.
- GARTH, J. S. 1957. Reports of the Lund University Chile expedition 1948-49. 29. The Crustacea Decapoda Brachyura of Chile. *Acta Universitatis Lundensis* (2), 53(7): 1-127, 11 figs, 4 pls.
- GRANT, F. E. and McCULLOCH, A. R. 1907. Decapod Crustacea from Norfolk Island. *Proceedings of the Linnaean Society of New South Wales* 32: 151-56, 1 pl.
- GRIFFIN, D. J. G. 1968. The designation of a neotype for *Cancer chabrus* Linnaeus and the status of *Plagusia capensis* De Haan (Decapoda, Grapsidae). *Crustaceana* 15: 209-13, pl. 1.
- 1969. Notes on the taxonomy and zoogeography of the Tasmanian Grapsid and Ocypodid crabs (Crustacea, Brachyura). *Records of the Australian Museum* 27: 323-47, 10 figs.
- 1971. The ecological distribution of grapsid and ocypodid shore crabs (Crustacea, Brachyura) in Tasmania. *Journal of Animal Ecology* 40: 597-621, 12 tables, 5 figs.
- 1972. Brachyura collected by Danish expeditions in south-eastern Australia (Crustacea, Decapoda). *Steenstrupia* 2: 49-90, 3 figs.
- GRIFFIN, D. J. G. and YALDWYN, J. C. 1971. Port Phillip Survey 1957-1963. 2. 5. Brachyura (Crustacea, Decapoda). *Memoirs of the National Museum of Victoria*. 32: 43-64, 2 tables, 4 figs.
- GUILER, E. R. 1956. Supplement to a list of the Crustacea of Tasmania. *Records of the Queen Victoria Museum (N.S.)*, 5: 1-8.

- HAAN, W. DE, 1833-1850. Crustacea. in P. F. de Siebold, *Fauna Japonica*. J. Muller, Amsterdam: pp. XVII, XXXI, 244, 55 pls.
- HALE, H. M. 1927a. *The Crustaceans of South Australia*. Part 1. Govt Printer, Adelaide: pp. 1-201, figs. 1-202.
- 1927b. The fauna and flora of Kangaroo Island. I. The Crustacea. *Transactions of the Royal Society of South Australia* 51: 307-21, 7 figs.
- HASWELL, W. A. 1882. *Catalogue of the Australian stalk- and sessile-eyed Crustacea*. Australian Museum, Sydney: pp. XXIV, 326, 4 pls.
- HEALY, A. and YALDWYN, J. C. 1970. *Australian crustaceans in colour*. A. H. and A. W. Reed, Sydney: pp. 112, 57 figs, 52 pls.
- HELLER, C. 1862. Vorläufiger bericht über die während der weltumseglung der K. fregatte "Novara" gesammelten crustaceen. *Ver. Zool.-bot. Ges.*, Wein 12: 519-28.
- HUTTON, F. W. 1875. Descriptions of two new species of Crustacea from New Zealand. *Annals and Magazine of Natural History* (4), 15: 41-42.
- KINGSLEY, J. S. 1880. Carcinological notes No. IV.—Synopsis of the Grapsidae. *Proceedings of the Academy of Natural Sciences, Philadelphia*. 1880: 187-224.
- LAMARCK, J. B. P. A. DE, 1818. *Histoire naturelle des animaux sans vertebres, présentent les caractères généraux et particuliers de ces animaux, leur distribution, leurs classes, leurs familles, leurs genres, et la citation des principales espèces . . . etc.* Paris. Vol. 5: pp. 612.
- LATREILLE, P. A. 1803. *Histoire naturelle, generale et particuliere, des crustacés et des insectes*. Paris. Vol. 6: pp. 391, 44 pls.
- LINNAEUS, C. 1758. *Systema naturae per regna tria naturae, secundum classes ordines, genera, species, cum characteribus, differentiis, synonymis, locis*. L. Salvius, Holmia. Ed. 10. Vol. 1: pp. 824, III.
- 1764. *Museum S:ae R:ae M:tis ludovicae ulricae reginae suecorum, gothorum, vandalorumque, etc.* L. Salvius, Holmia: pp. 720.
- MACLEAY, W. S. 1838. On the brachyurous decapod Crustacea brought from the Cape by Dr Smith. In A. Smith (ed.), *Illustrations of the zoology of South Africa. Invertebrata*. Smith, Elder and Co., London. Vol. 5(3): 53-71, pls 2, 3.
- MAN, J. G. DE 1890. Carcinological studies in the Leyden Museum. No. 4. *Not. Leyden Mus.* 12: 49-126, pls 3-6.
- MCNEILL, F. A. 1937. The Crustacea. In G. G. Whitley, The Middleton and Elizabeth Reefs, South Pacific Ocean. *Australian Zoologist* 8: 263-67.
- 1962. Crabs of the Sydney foreshores. *Australian Natural History* 14: 37-43, illus.
- MIERS, E. J. 1878. Revision of the Plagusiinae. *Annals and Magazine of Natural History* (5), 1: 147-54.
- 1886. Report on the Brachyura collected by H.M.S. "Challenger" during the years 1873-76. *Report of the Scientific Results of the Exploring Voyage of H.M.S. Challenger, Zoology*, 17 (no. 2, pt. 49): I-L, 1-362, 29 pls.
- MILNE EDWARDS, H. 1837. Histoire naturelle des Crustacés nouveaux du Museum Godeffroy. *J. Mus. Godeffroy* 1: 77-88, 2 pls.
- 1853. Memoire sur la famille des ocyropodiens. *Annales des Sciences Naturelles, Zoologie* (3), 20: 165-228, pls 6-11.
- MONTGOMERY, S. K. 1931. Report on the Crustacea Brachyura of the Percy Sladden Trust Expedition to the Abrolhos Islands under the leadership of Prof. W. J. Dakin in 1913, along with other crabs from Western Australia. *Journal of the Linnean Society of London Zoology*, 37: 405-64, text fig. 1, pls 24-30.
- MORTON, J. E. and MILLER, M. 1968. *The New Zealand Sea Shore*. Collins, London and Auckland: pp. 638, 220 figs, 32 pls.
- PORTER, C. E. 1937. Carcinologia chilena. 28. Introduccion al estudio de los grapsidos. *Revista Chilena Historia Natural*, 41: 20-24, text-fig. 1, pl. 4.
- QUOY, J. R. C. and GAIMARD, P. 1824. Des Crustacés. In L. de Freycinet (ed.), *Voyage autour de monde, entre pris par ordre du Roi. . . sur les corvettes de S.M. "l'Uranie" et "la Physicienne", pendant les années 1817, 1818, 1819 et 1820*. Zoologie. Paris: 517-41, pls 76-82.
- RATHBUN, MARY J. 1918. The grapsoid crabs of America. *Bulletin of the United States National Museum*, 97: pp. XXII, 461, 172 figs, 151 pls.
- 1923. Report on the crabs obtained by the F.I.S. "Endeavour" on the coasts of Queensland, New South Wales, Victoria, South Australia and Tasmania. *Biological Results of the Fishing Experiments carried out by F.I.S. "Endeavour" 1909-14*, 5: 93-156, 3 figs, pls 16-42.
- SAKAI, T. 1965. *The crabs of Sagami Bay collected by His Majesty the Emperor of Japan*. Maruzen, Tokyo.: pp. XVI, 206, 26, 92, 32, 1 map, 27 figs, 100 pls.
- STEBBING, T. R. R. 1905. South African Crustacea. Part III. *Marine Investigations in South Africa* (4): 21-123, pls 17-26.
- TESCH, J. J. 1918. The Decapoda Brachyura of the "Siboga" expedition. IV. Hymenosomidae, Retroplumidae, Ocyropodidae, Grapsidae and Gecarcinidae. *Siboga-expedition Monographs* 39C (82): I-IV, 1-148, 4 pls.

- TWEEDIE, M. F. W. 1942. The grapsid and ocypodid crabs of Tasmania. *Papers and Proceedings of the Royal Society of Tasmania* 1941: 13-26, 10 figs.
- WHITE, A. 1842. Description of an orthopterous Insect and two new species of Crustacea, from New Zealand: In the collections of the British Museum. In J. E. Gray (ed.), *The Zoological Miscellany*. London: 78-79.
- 1846. In Meeting of the Entomological Society, April 7, 1845. *Annals and Magazine of Natural History* 17 (Suppl.): 497.
- WHITELEGGE, T. 1889. List of the marine and freshwater invertebrate fauna of Port Jackson and the neighbourhood. *Journal of the Royal Society of New South Wales* 23: 163-323.

DR D. J. G. GRIFFIN
Australian Museum
College Street
Sydney, N.S.W.