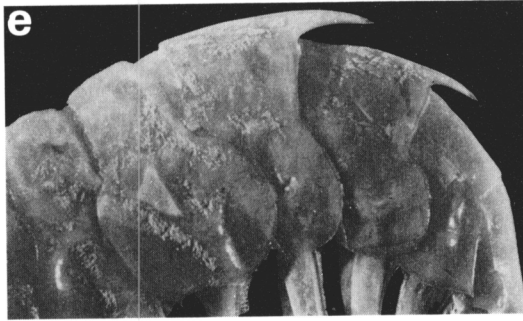
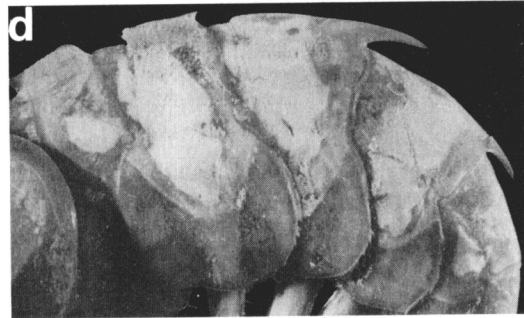
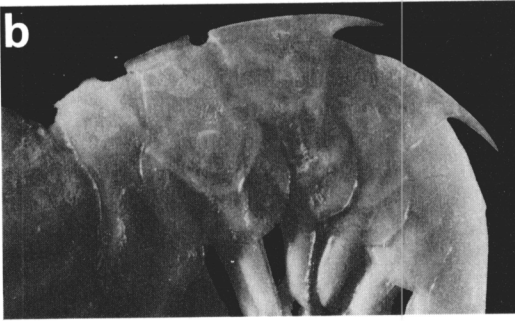
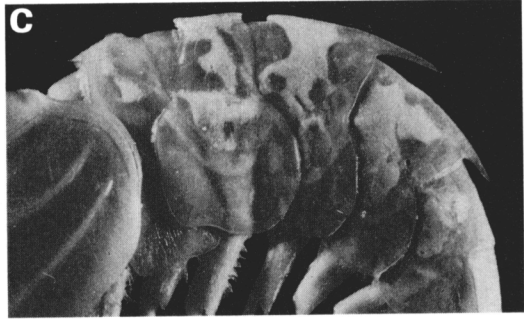


PLANCHE II

PLANCHE III

Abdomen, vue latérale partielle

- a-b : *Heterocarpus sibogae* de Man, 1917 : a, ♂ 32,3 mm, Madagascar, CH 9, 460 m (MP-Na 12251) ; b, ♂ 28,4 mm, îles Chesterfield, MUSORSTOM V, st. 363, 19°47,90' S-158°44,30' E, 700-685 m (MP-Na 12203).
- c-e : *Heterocarpus hayashii* sp. nov. : c, ♂ 29,5 mm, , holotype, îles Chesterfield, MUSORSTOM V, st. 383, 615-600 m (MP-Na 12395) ; d, ♂ 34,5 mm, Nouvelle-Calédonie, MUSORSTOM IV, st. 200, 18°53,8' S-163°14,1' E, 535 m (MP-Na 12875) ; e, forme à carène dorsale des deux premiers segments abdominaux basse, ♂ 34,0 mm, Nouvelle-Calédonie, MUSORSTOM IV, st. 236, 22°11,3' S-167°15,0' E, 495-550 m (MP-Na 12279).

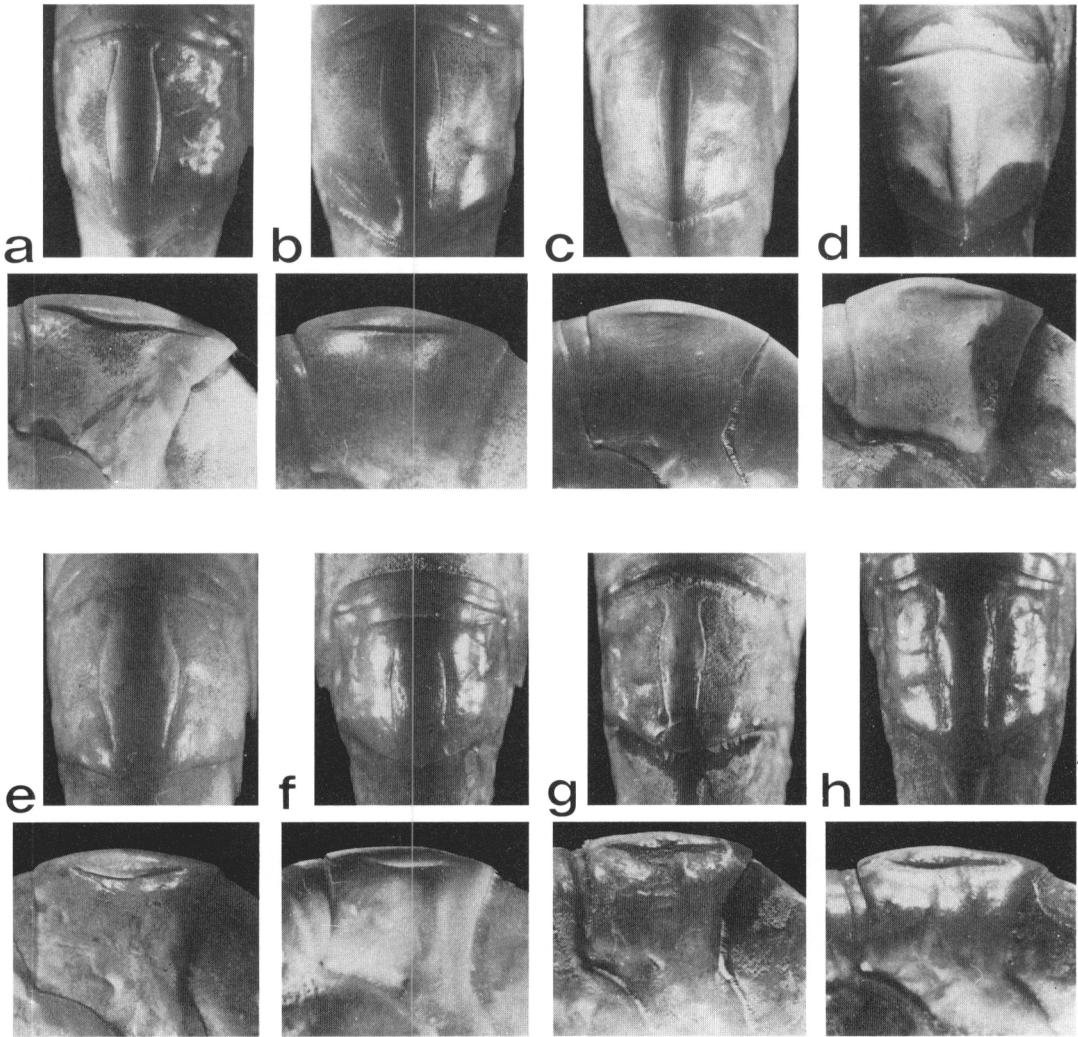


*PLANCHE III*

PLANCHE IV

Côte dorsale du troisième segment abdominal, vues dorsale et latérale

- a-b : *Heterocarpus lepidus* de Man, 1917 : a, ♀ 32,0 mm, lectotype, Indonésie, Siboga Exped., st. 215 A, 500 m (ZMA 102848) ; b, ♀ 32,4 mm, Madagascar, CH 29, 540 m (MP-Na 10055).
- c-d : *Heterocarpus gibbosus* Bate, 1888 : c, ♀ 29,4 mm, Philippines, MUSORSTOM III, st. 144, 379-383 m (MP-Na 9897) ; d, ♀ 31,0 mm, Philippines, MUSORSTOM II, st. 49, 416-425 m (MP-Na 9907).
- e-f : *Heterocarpus tricarinatus tricarinatus* Alcock et Anderson, 1894 : e, ♂ 34,2 mm, Madagascar, CH 141, 1600-1725 m (MP-Na 10026) ; f, ♀ 32,3 mm, mer d'Arabie, John Murray Exped., st. 62, 1893 m (BM.1939.10.9.253-256).
- g-h : *Heterocarpus tricarinatus angustus* subsp. nov. : g, ♂ 30,5 mm, holotype, Indonésie, Siboga Exped., st. 208, 1886 m (ZMA) ; h, ♀ ov. 34,8 mm, paratype, Indonésie, CORINDON II, st. 231, 1080-980 m (MP-Na 10063).



*PLANCHE IV*

