

EXPLANATION OF PLATE.

CRUSTACEA.

PLATE LVI.

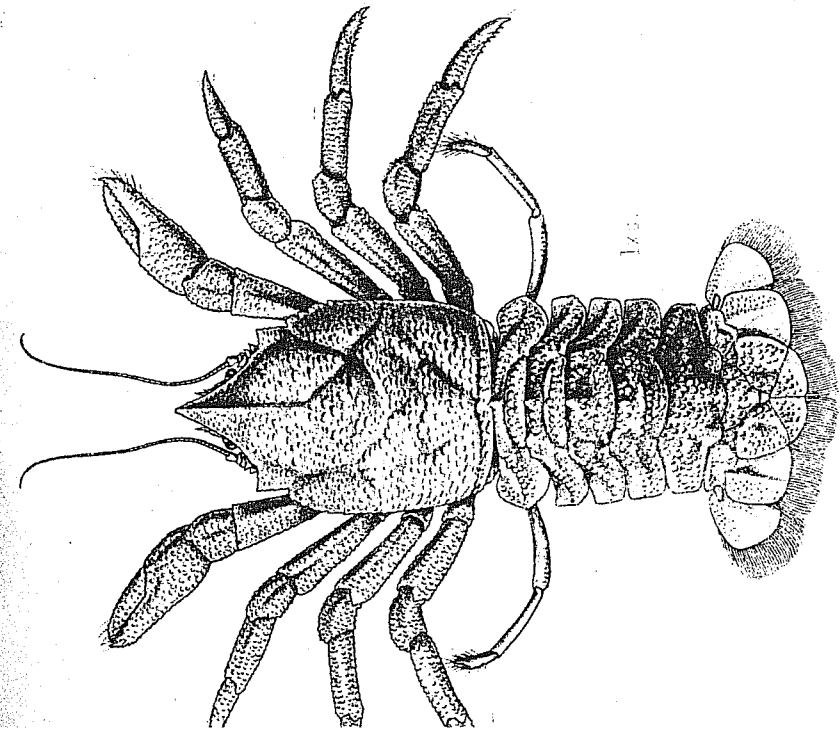
fig. 1.—*Munidopsis (Orophorhynchus) granosa*, Alcock, De-
re Catalogue of Indian Deep Sea Crustacea Decapoda Macrura
nomala, p. 266.

fig. 2.—*Munidopsis (Orophorhynchus) edwardsii*, (Wood-
.) *Op. cit.*, p. 265.

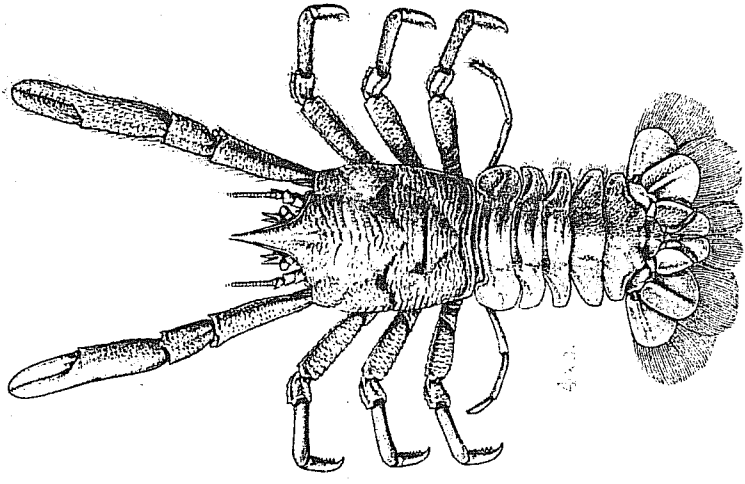
fig. 3.—*Uroptychus nigricapillis*, Alcock. *Op. cit.*, p. 283.

fig. 4.—*Munidopsis (Elasmonotus) sinclairi*, McArdle, Annals
Magazine of Natural History, Series 7, Vol. viii, December, 1901,

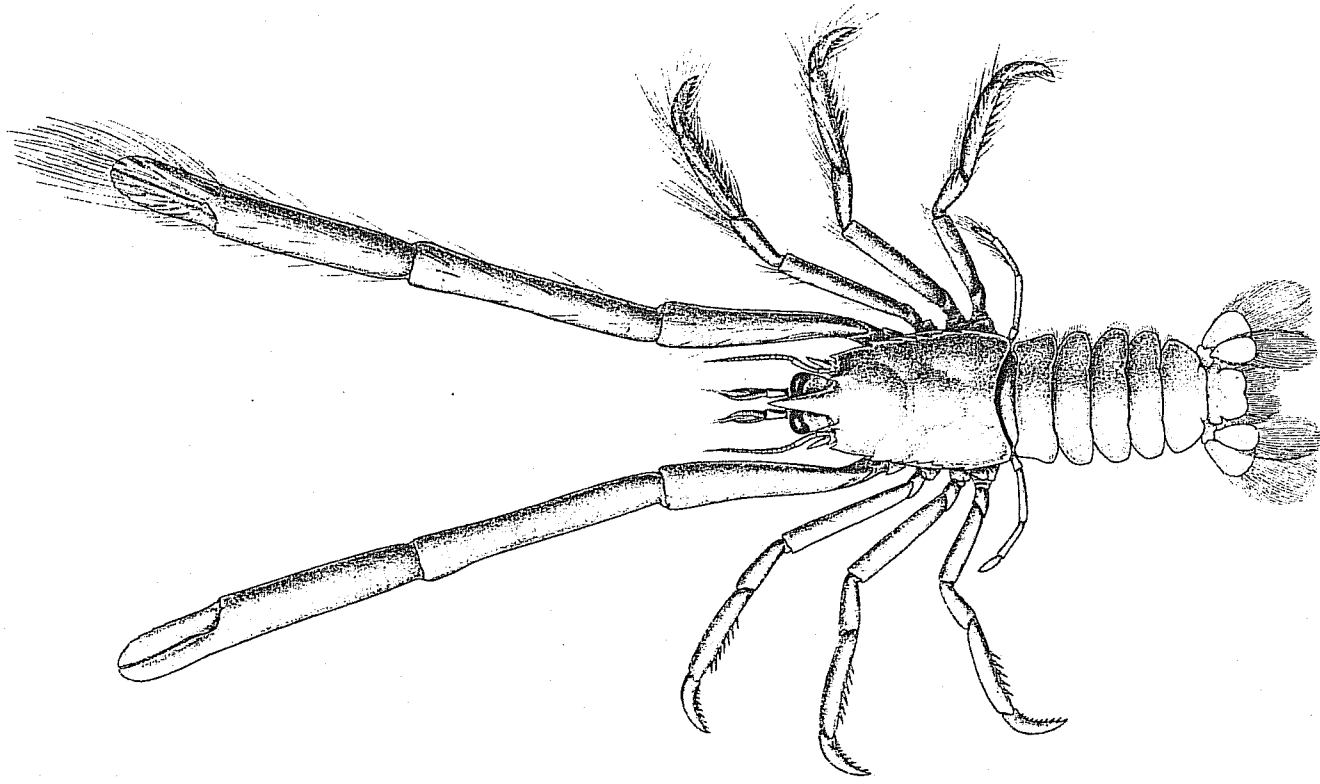
fig. 5.—*Munidopsis orcina*, McArdle. *Op. cit.*, p. 523.



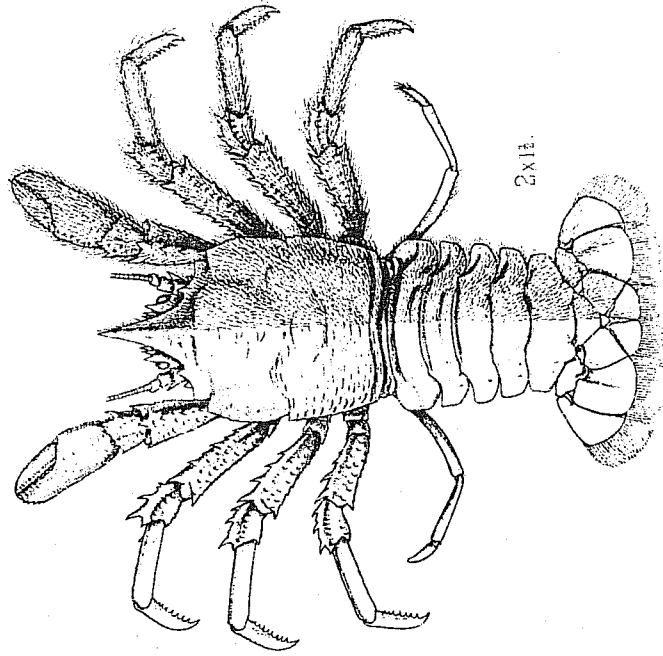
1x.



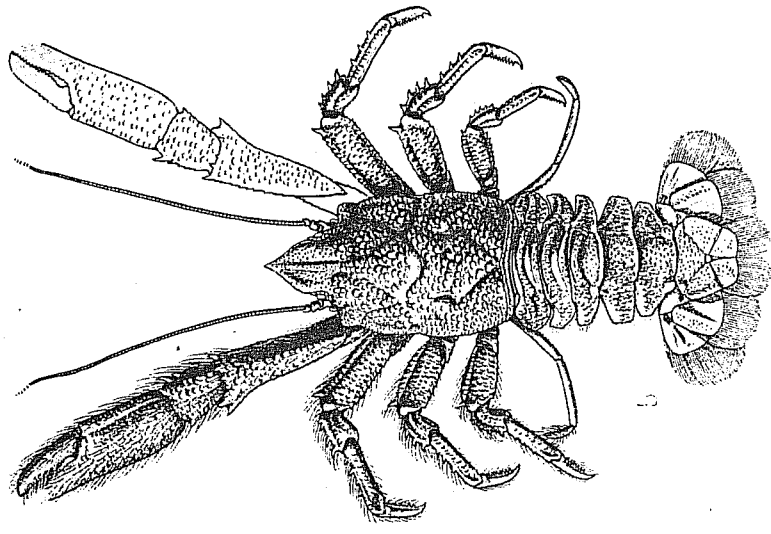
5x.



3x.



2x.



6

1 *Munidopsis* (*Orophorhynchus*) *granosa*. 2 *Munidopsis* (*Orophorhynchus*) *edwardsii*. 3 *Urephycheus nigricapillus*.
 4 *Munidopsis* (*Elaemoneotus*) *sirclairi*. 5 *Munidopsis* *orcina*.

EXPLANATION OF PLATE

CRUSTACEA.

PLATE LVII.

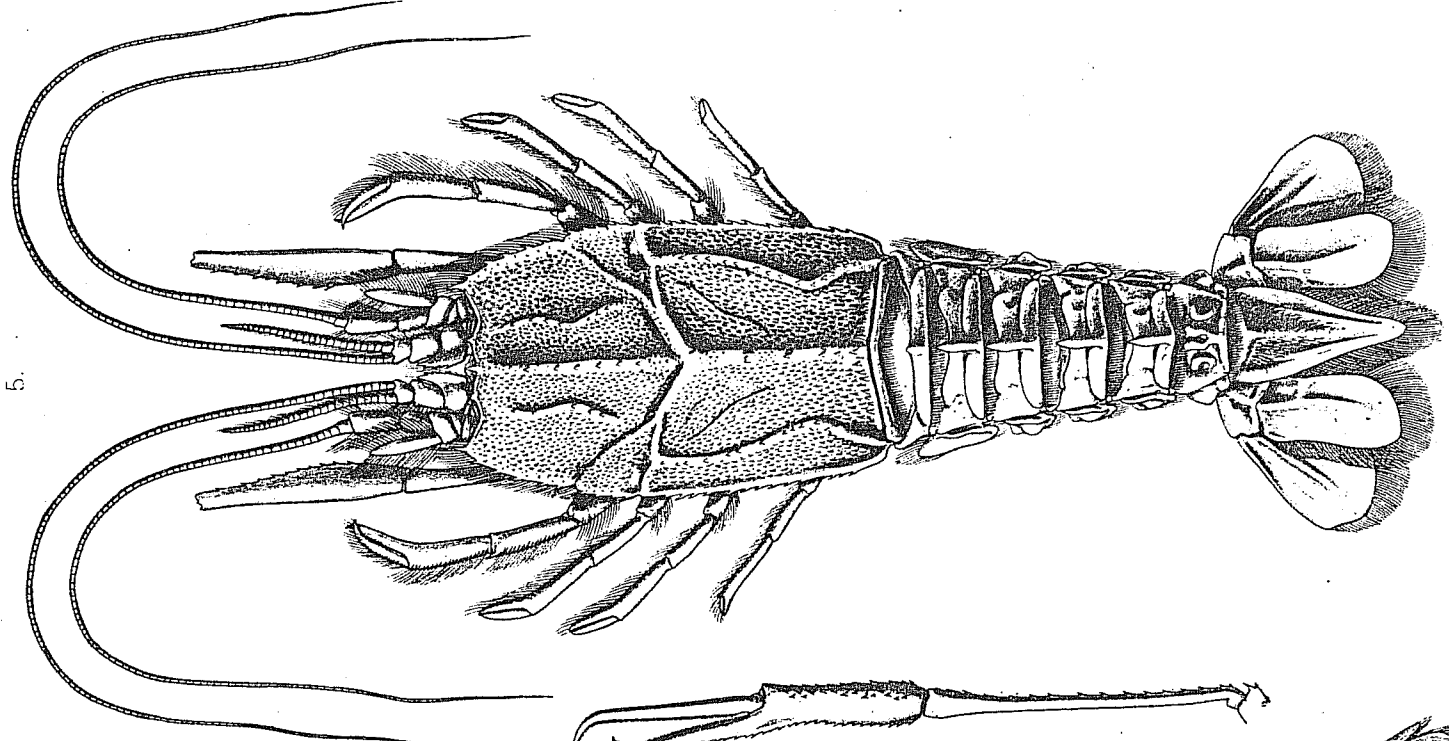
Figs. 1, 1a.—*Uroptychus nanophyes*, McArdle, ♂ ♀. *Annals and Magazine of Natural History, Series 7, Vol. viii, December, 1901, 525.*

Figs. 2, 2a.—*Calastacus longispinis*, McArdle. *Op. cit.*, p. 522.

Fig. 3.—*Munidopsis (Orophorhynchus) ceratophthalmus*, Alcock, *Descriptive Catalogue of Indian Deep Sea Crustacea Decapoda Scudicrura and Anomala*, p. 271.

Fig. 4.—*Gebicula exigua*, Alcock, *Op. cit.*, p. 202.

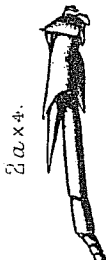
Figs. 5, 5a.—*Willemæsia indica*, Alcock. *Op. cit.*, p. 178.



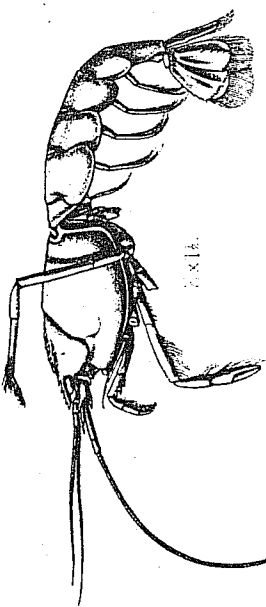
5.



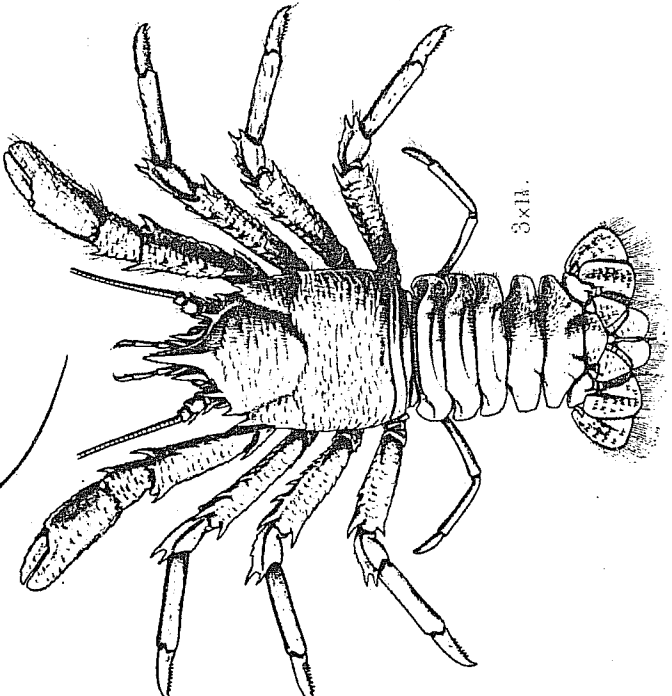
5a x14.



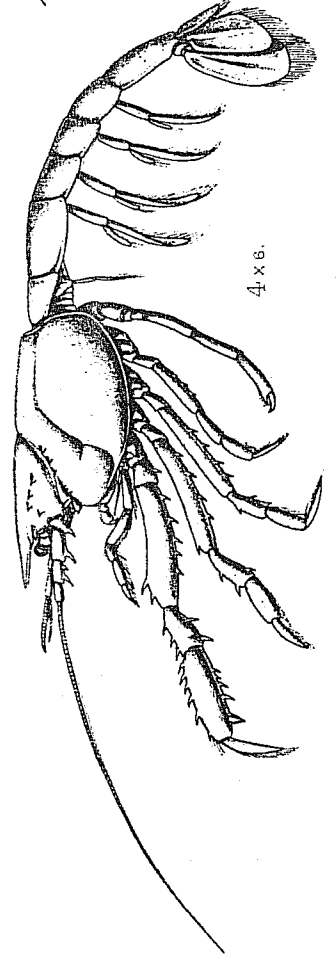
2a x4.



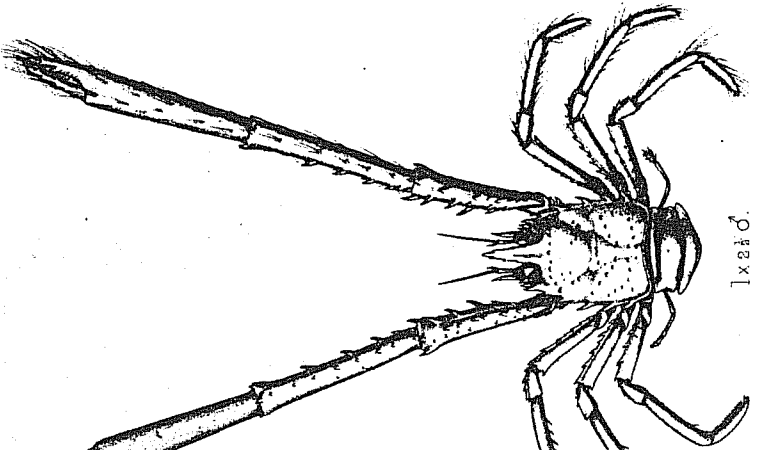
7 x14.



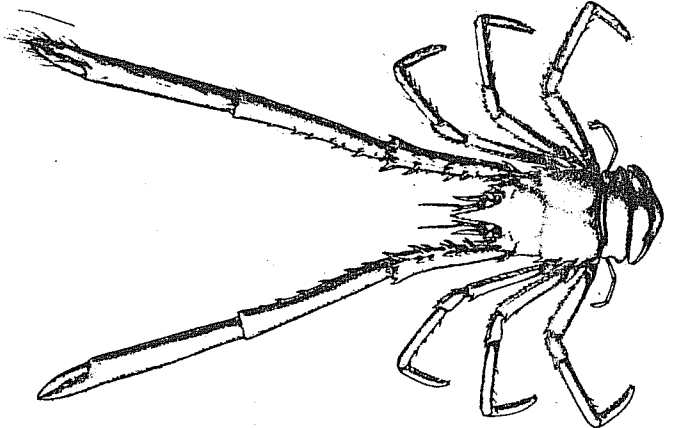
8 x14.



4 x6.



1 x24. ♂.



1a x29. ♀.

EXPLANATION OF PLATE.

—+—
CRUSTACEA.
—+—

PLATE LVIII.

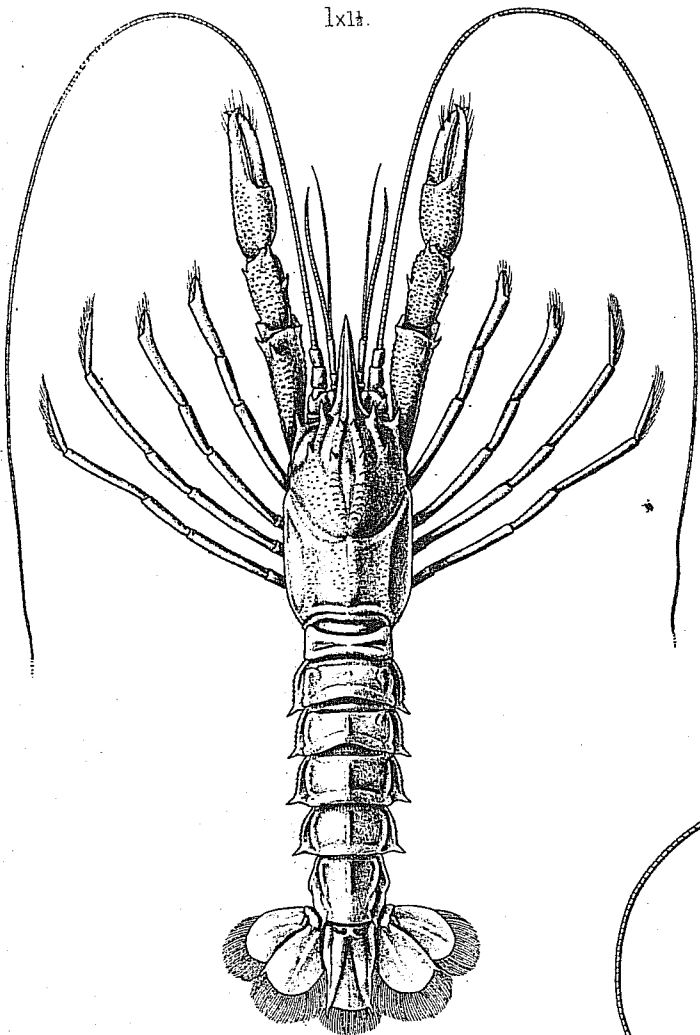
igs. 1, 1a.—*Nephropsis ensirostris*, Alcock, Descriptive Catalogue of Indian Deep Sea Crustacea Decapoda Macrura and Anomala,

igs. 2, 2a.—*Iconaxiopsis andamanensis*, Alcock. *Op. cit.*,

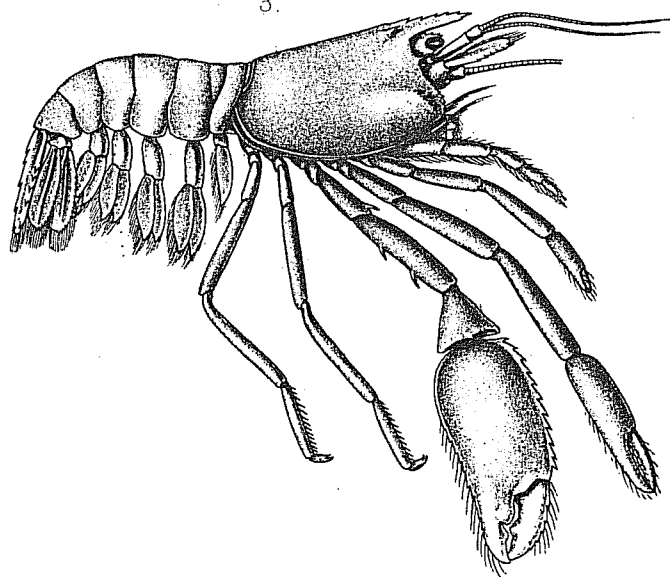
ig. 3.—*Spongicola andamanica*, Alcock. *Op. cit.*, p. 148.

igs. 4.—*Ptychogaster investigatoris*, Alc. & And. ♀. *Op. cit.*,

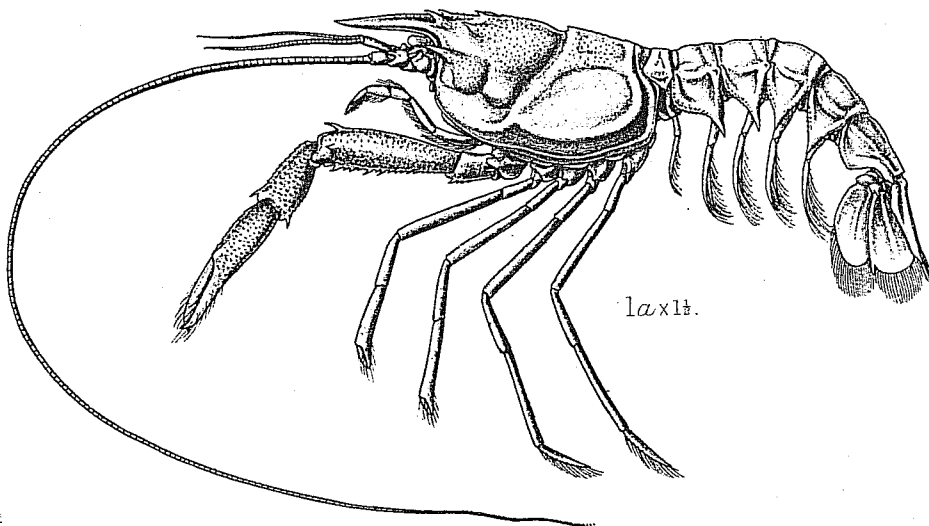
lxii.



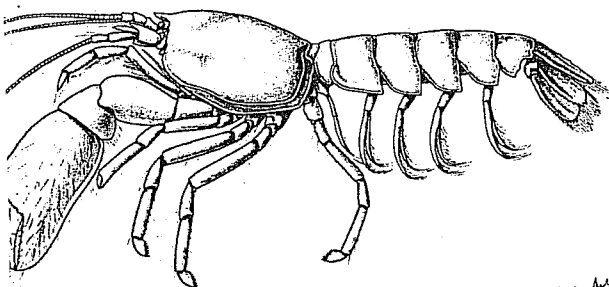
3.



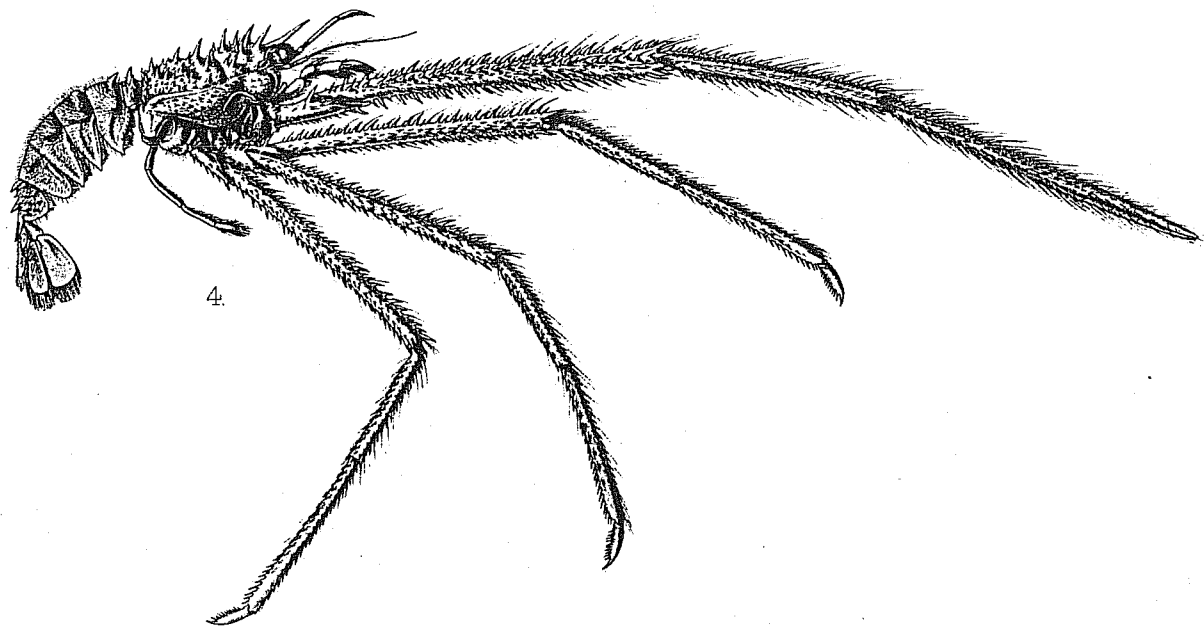
1a x 1 1/2.



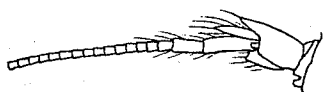
2 x 2.



4.



2a x 4.



1. *Nephropsis ensirostris*. 2. *Iconaxiopsis andamanensis*.

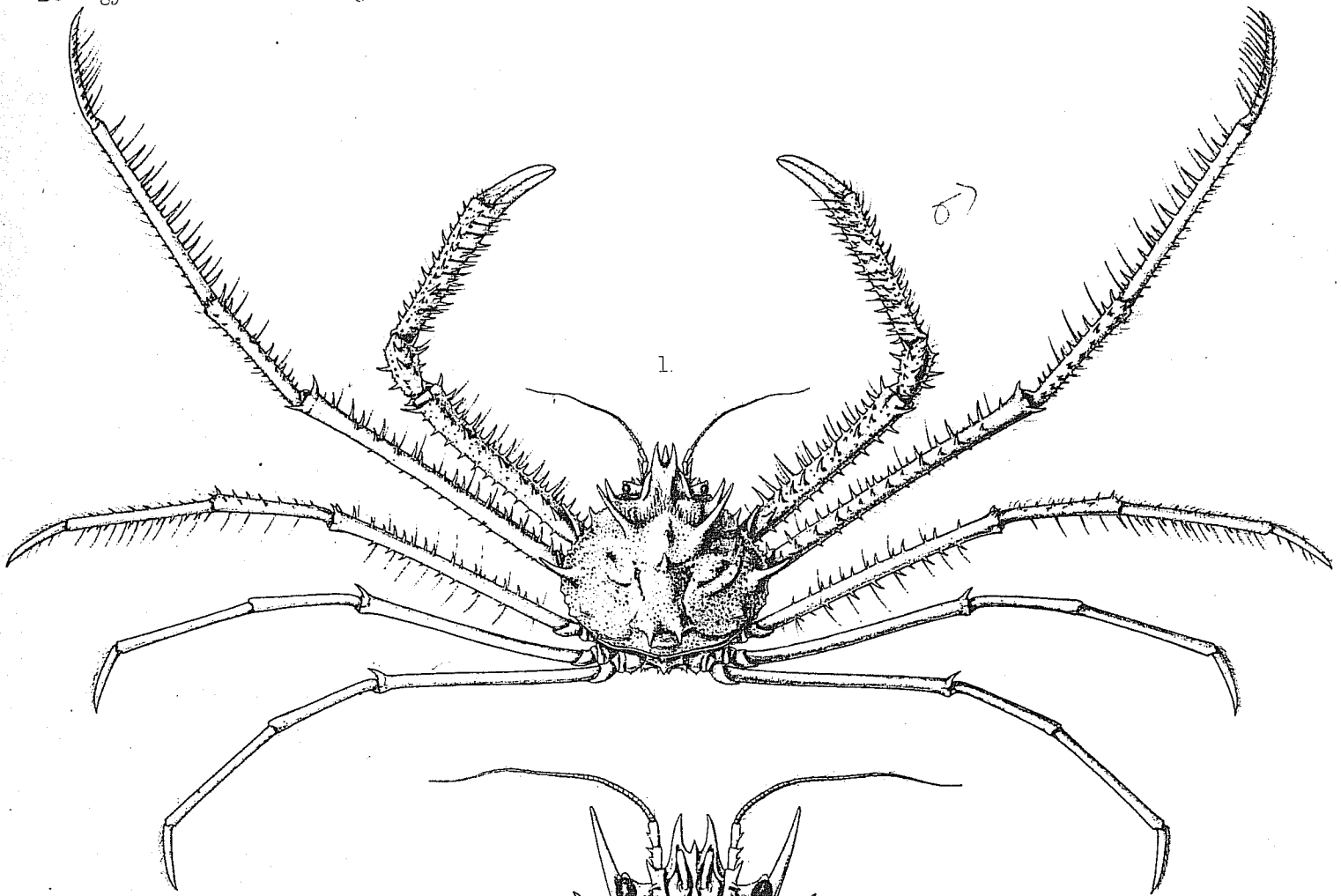
EXPLANATION OF PLATE.

—+—
CRUSTACEA.
—+—

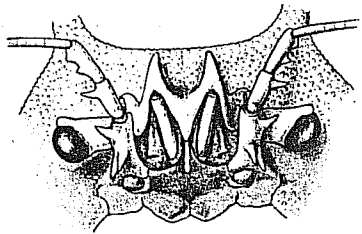
PLATE LIX.

Figs. 1, 1a, 1b, 1c.—*Cyrtomaia goodridgei*, McArdle, ♂.
Annals and Magazine of Natural History, Series 7, Vol. vi, November, 1900, p. 472.

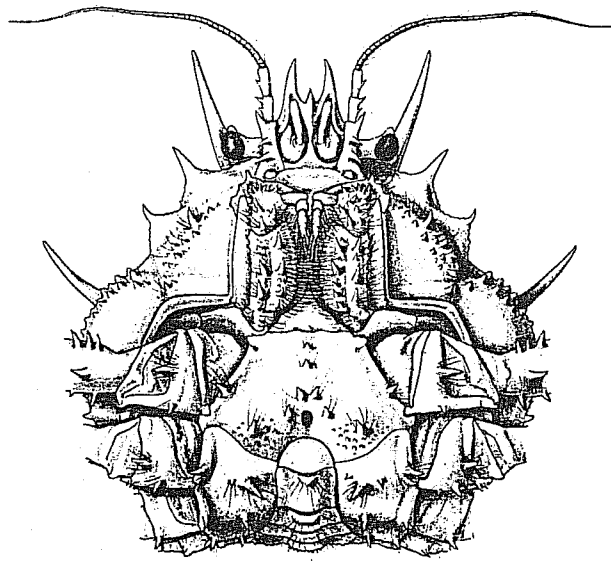
Figs. 2, 2a.—*Ethusa hirsuta*, McArdle. *Op. cit.*, p. 474.



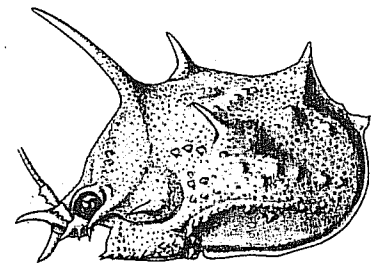
1.



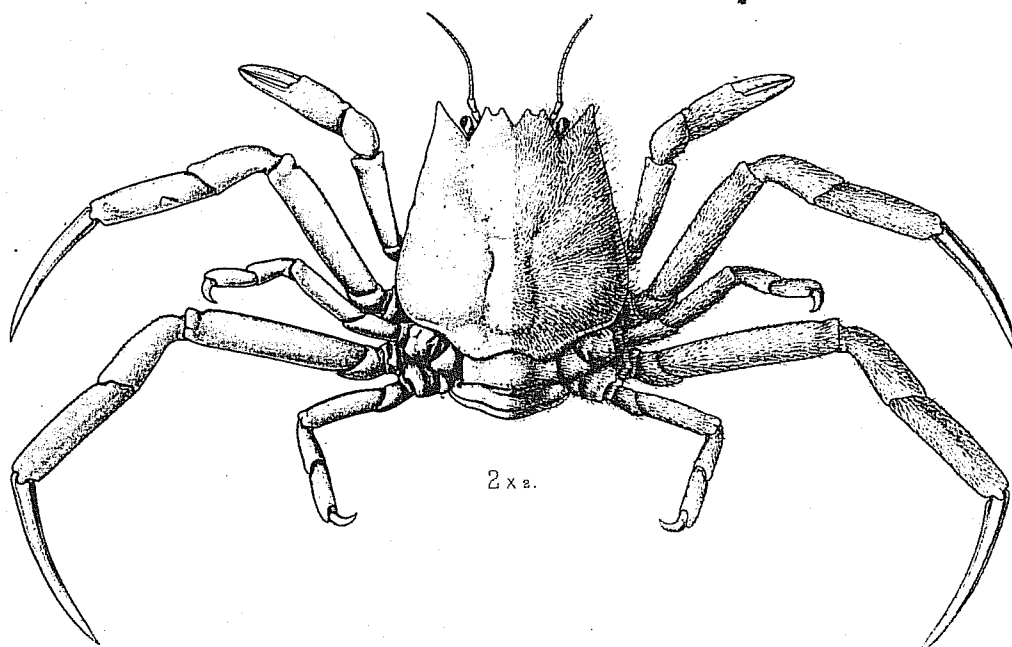
1bxa.



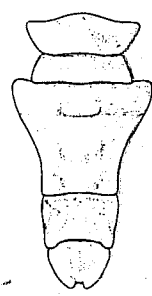
1axa.



1cxl.



2xa.



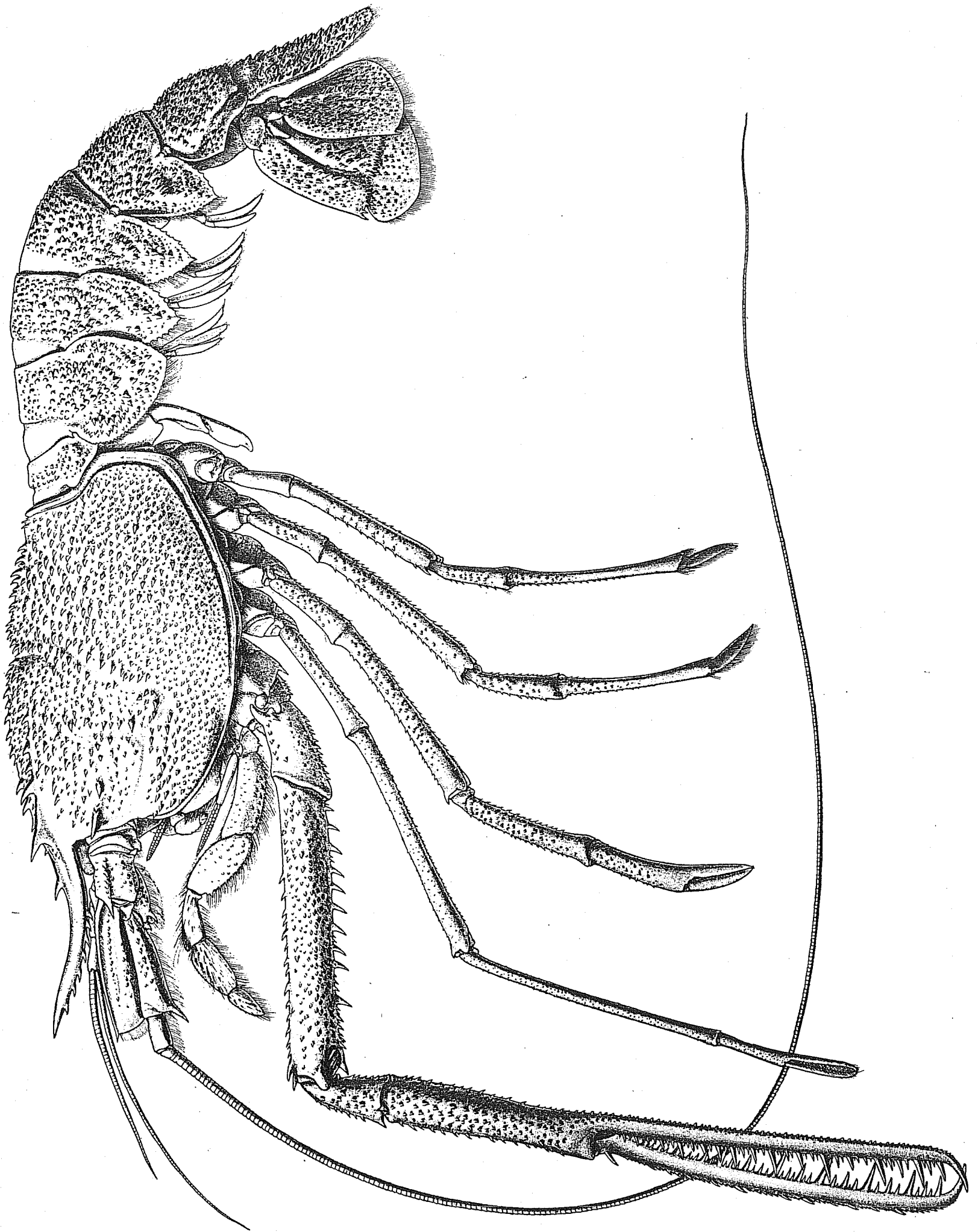
2axa.

EXPLANATION OF PLATE.

CRUSTACEA.

PLATE LX.

Phoberus cæcus, var. *tenuimanus*, Spence Bate. See Alcock, Descriptive Catalogue of Indian Deep Sea Crustacea Decapoda Macrura and Anomala, p. 156.



Phoberus caecus, var. *tenuimanus*.

EXPLANATION OF PLATE.

CRUSTACEA.

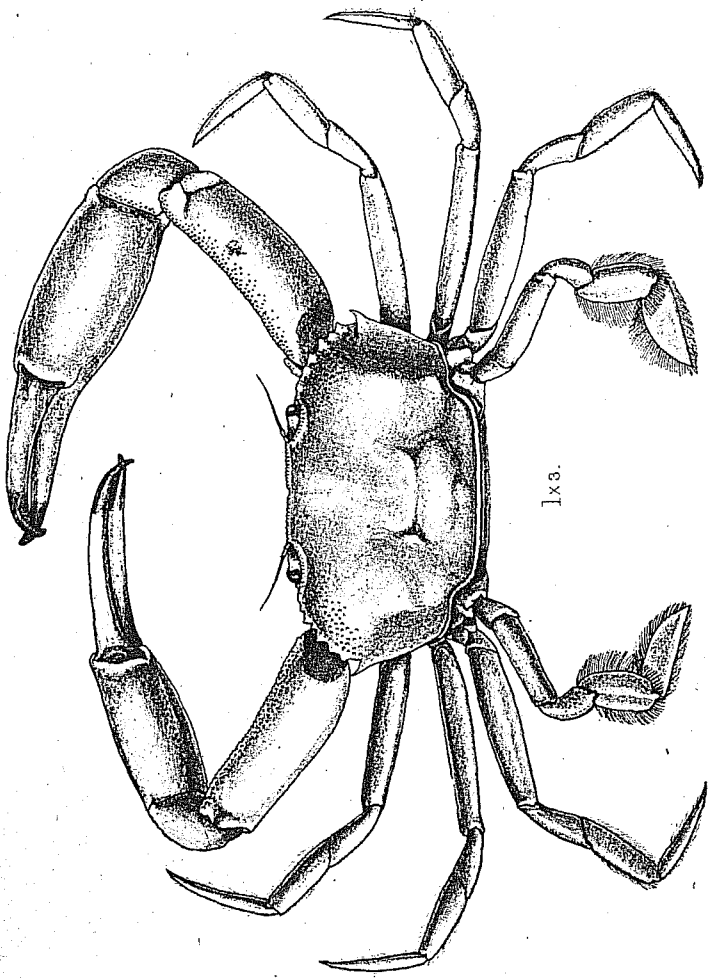
PLATE LXI.

Fig. 1.—*Libystes edwardsi*, Alcock, Materials for a Carcinological Fauna of India, No. 6. The Brachyura Catometopa or Isoidea. Journal of the Asiatic Society of Bengal, Vol. LXIX, 2, 1900, p. 306.

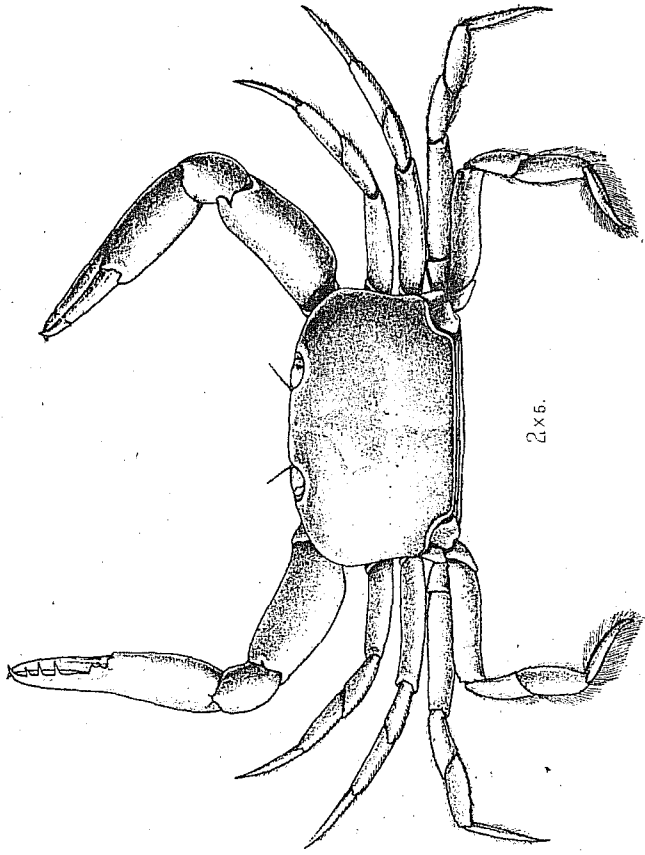
Fig. 2.—*Libystes alphonsi*, Alcock. *Op. cit.*, p. 306.

Fig. 3.—*Notonyx vitreus*, Alcock. *Op. cit.*, p. 319.

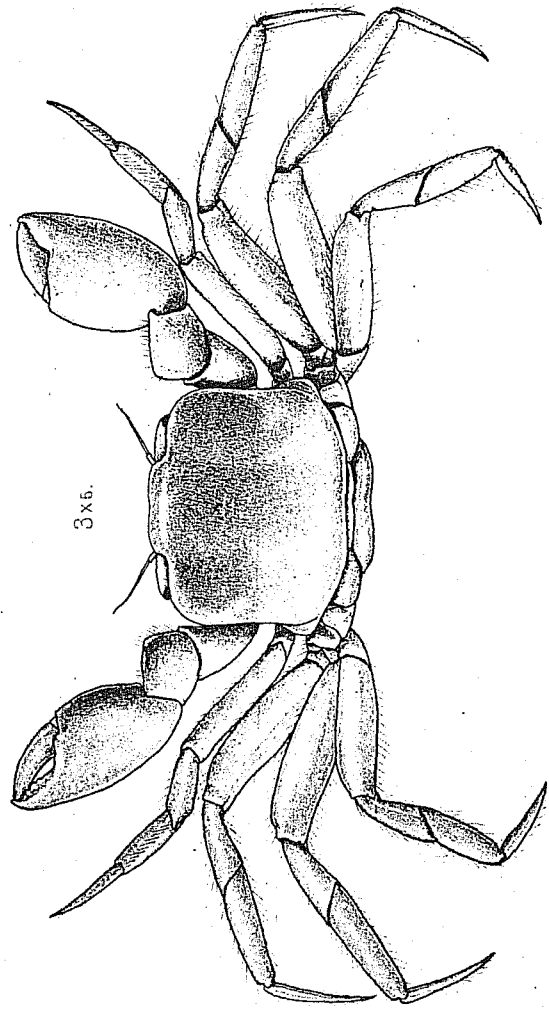
Fig. 4.—*Ceratoplax hispida*, Alcock. *Op. cit.*, p. 321.



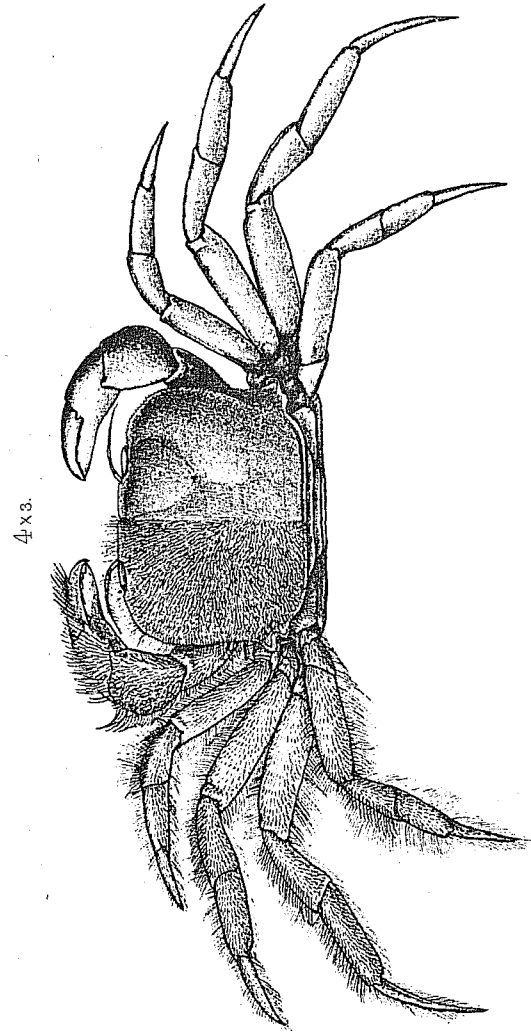
1x3.



2x5.



3x6.



4x3.

1. *Libystes edwardsi*. 2. *Libystes alphonssi*. 3. *Notonyx vitreus*. 4. *Ceratoplax hispida*.

EXPLANATION OF PLATE.

CRUSTACEA.

PLATE LXII.

Figs. 1, 1a, 1b.—*Lambdophallus sexpes*, Alcock, Materials for a Carcinological Fauna of India, No. 6. The Brachyura Catometopa or Grapsoidea. Journal of the Asiatic Society of Bengal, Vol. LXIX, part 2, 1900, p. 330.

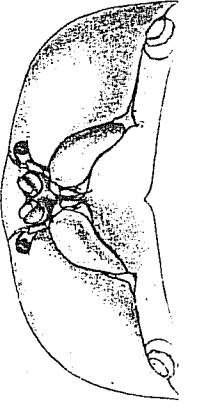
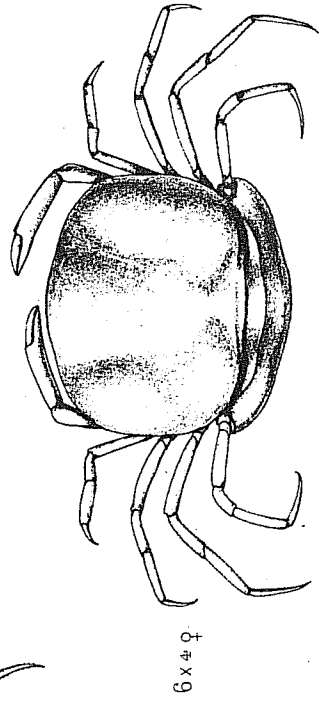
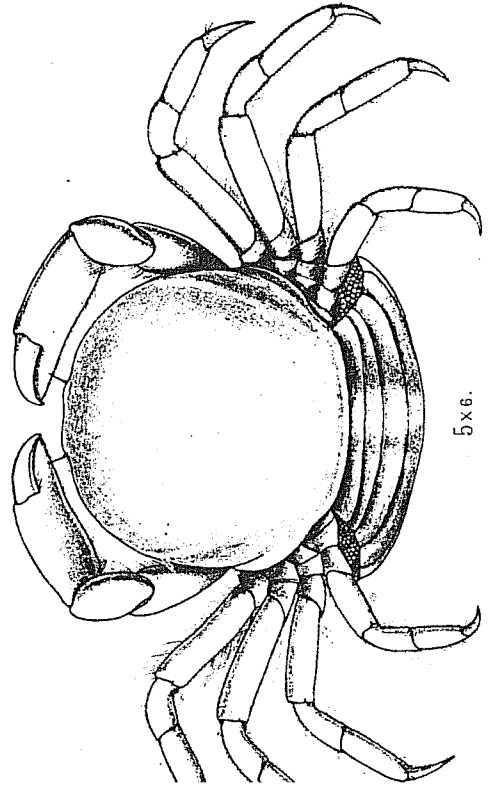
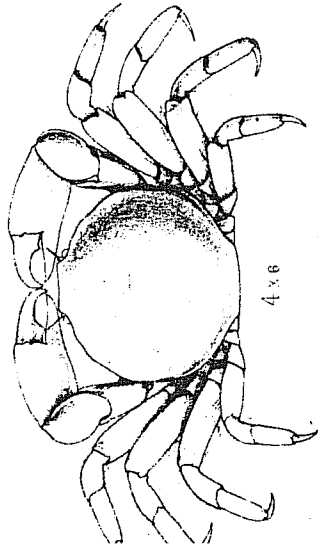
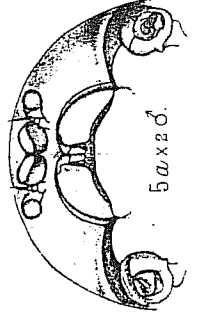
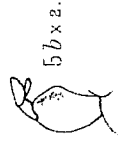
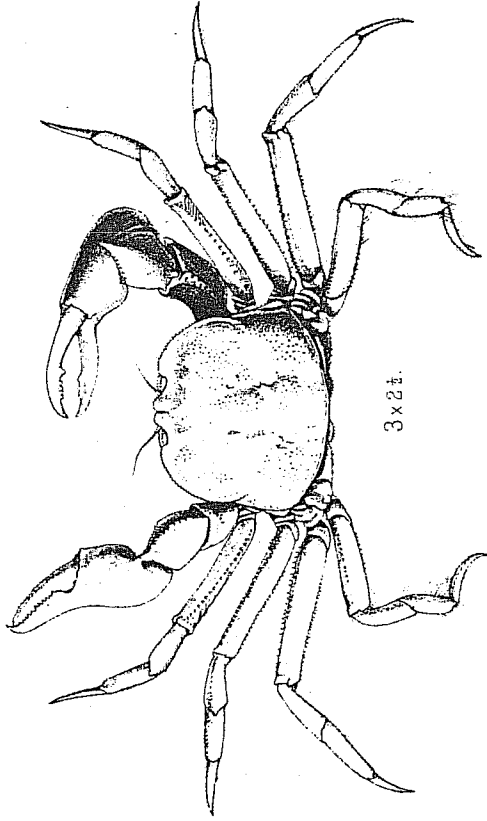
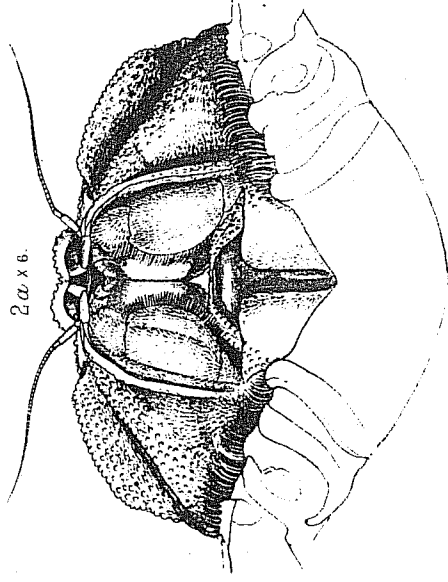
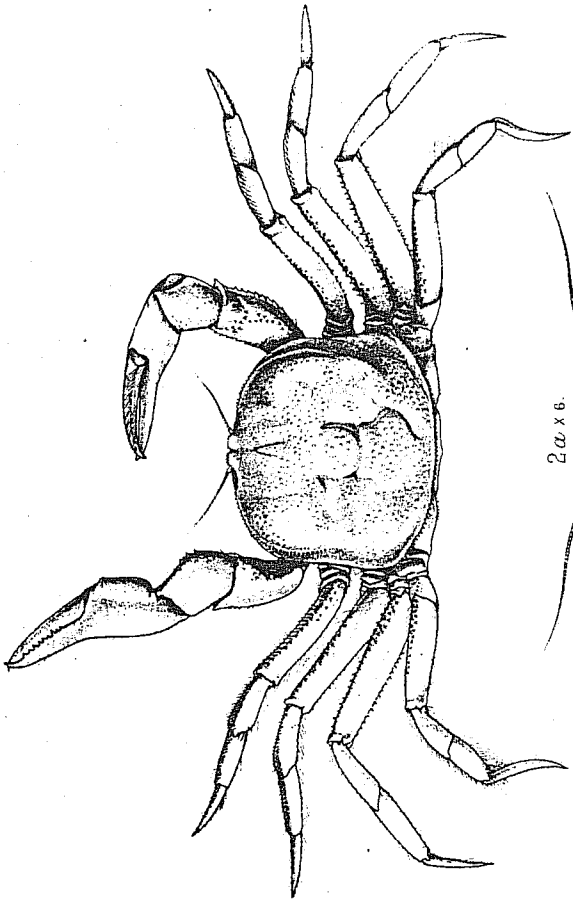
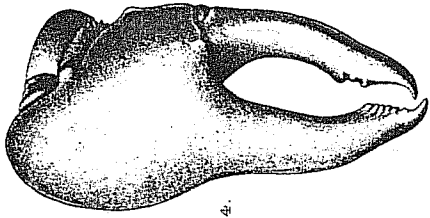
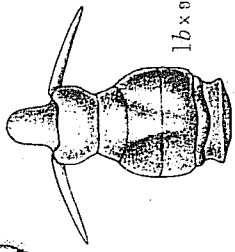
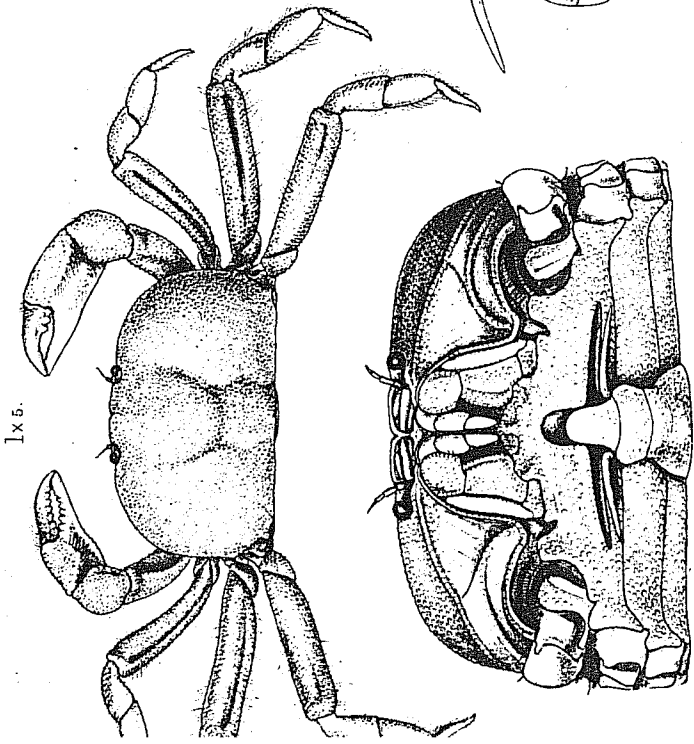
Figs. 2, 2a.—*Chasmocarcinops gelasimoides*, Alcock, ♀. *Op. cit.*, p. 334.

Figs. 3, 3a.—*Chasmocarcinops gelasimoides*, Alcock, ♂, *loc. admodum cit.*

Fig. 4.—*Pinnotheres mactricola*, Alcock, ♂. *Op. cit.*, p. 339.

Figs. 5, 5a, 5b.—*Pinnotheres mactricola*, Alcock, ♀ *loc. admodum cit.*

Figs. 6, 6a, 6b.—*Pinnotheres purpureus*, Alcock, ♀. *loc. admodum cit.*



EXPLANATION OF PLATE.

—+—
CRUSTACEA.
—+—

PLATE LXIII.

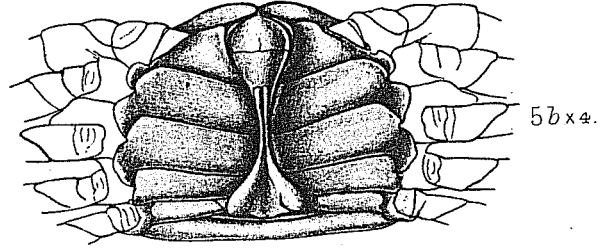
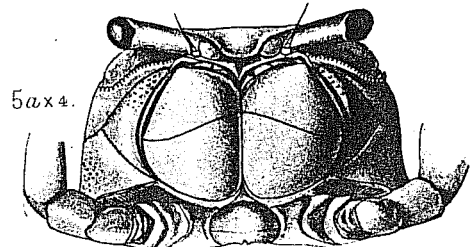
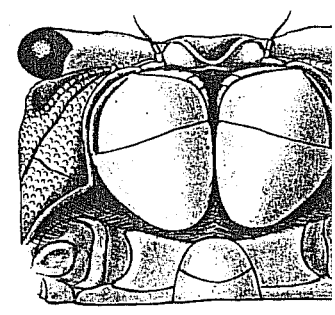
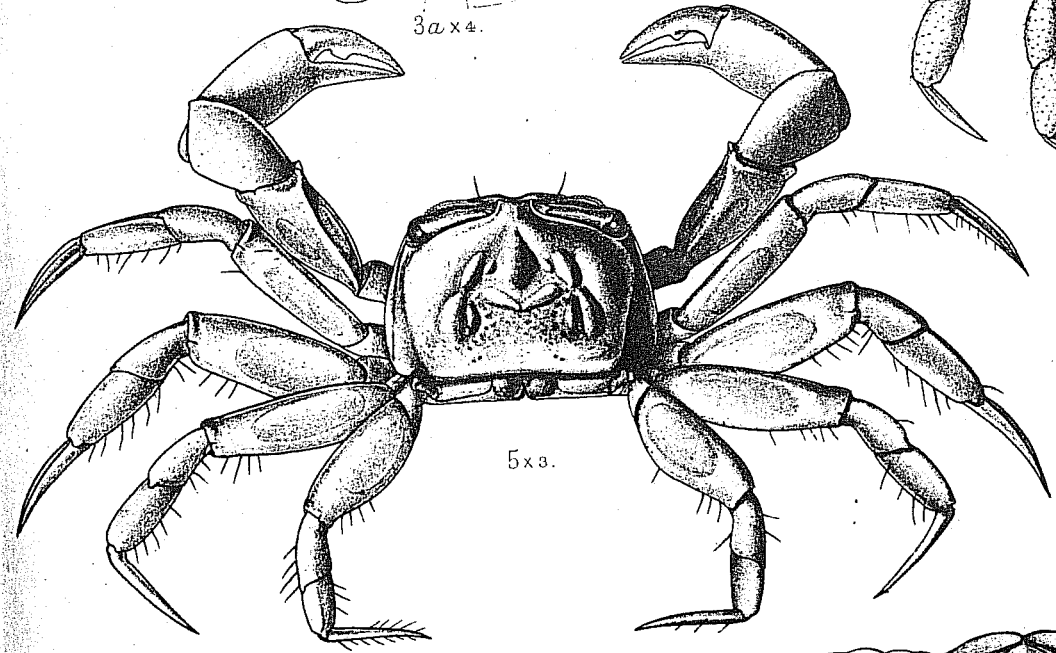
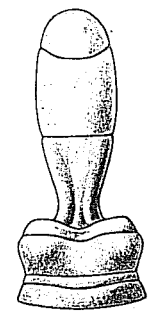
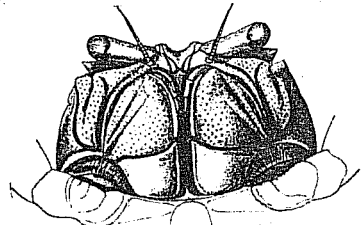
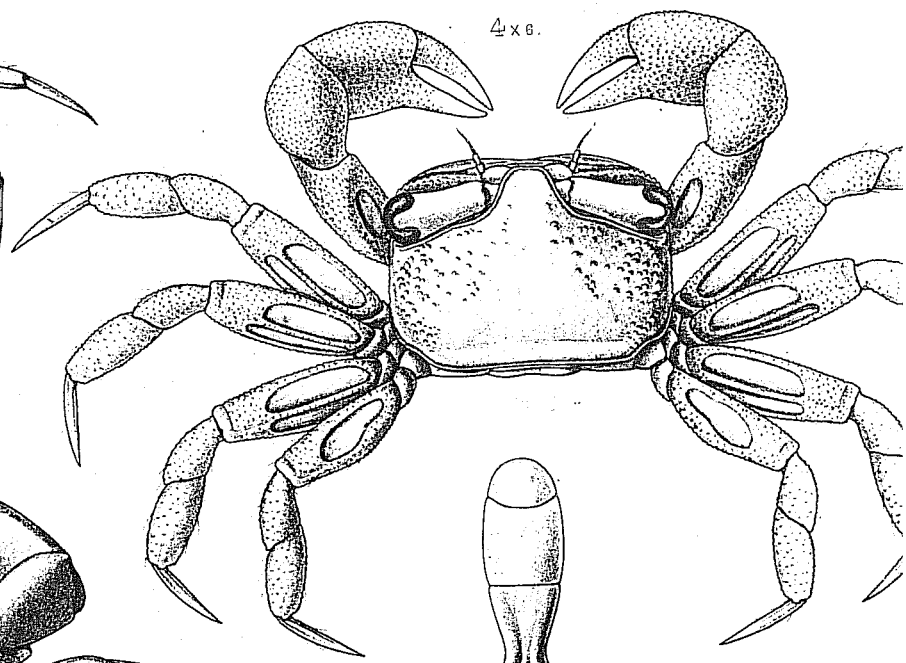
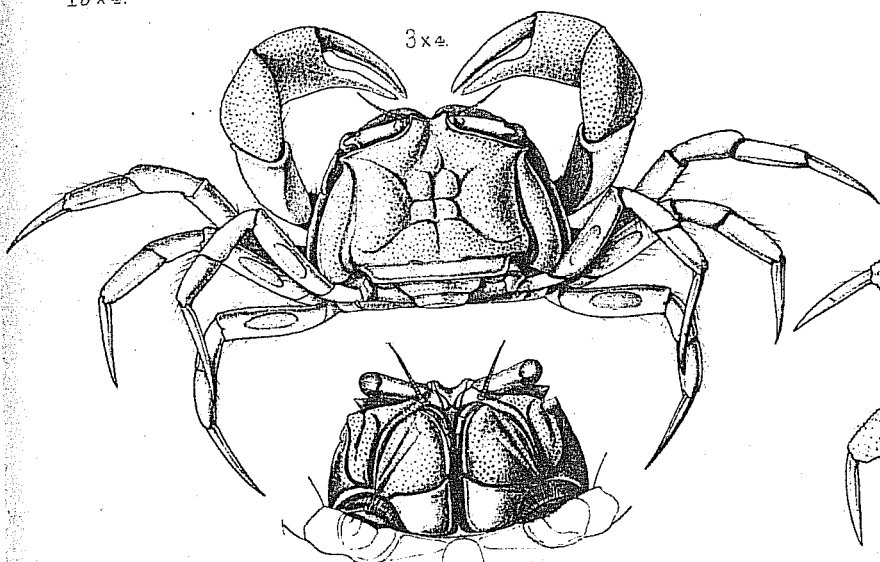
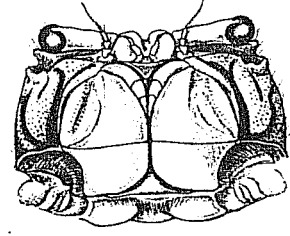
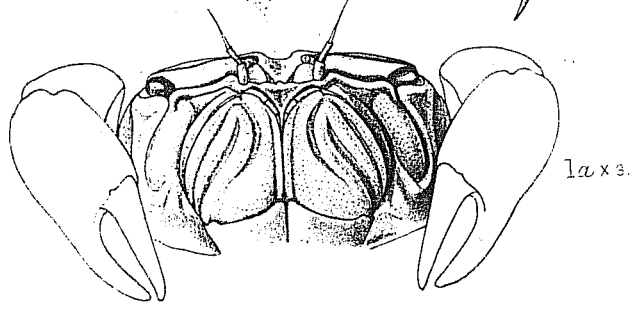
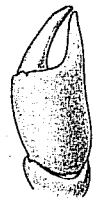
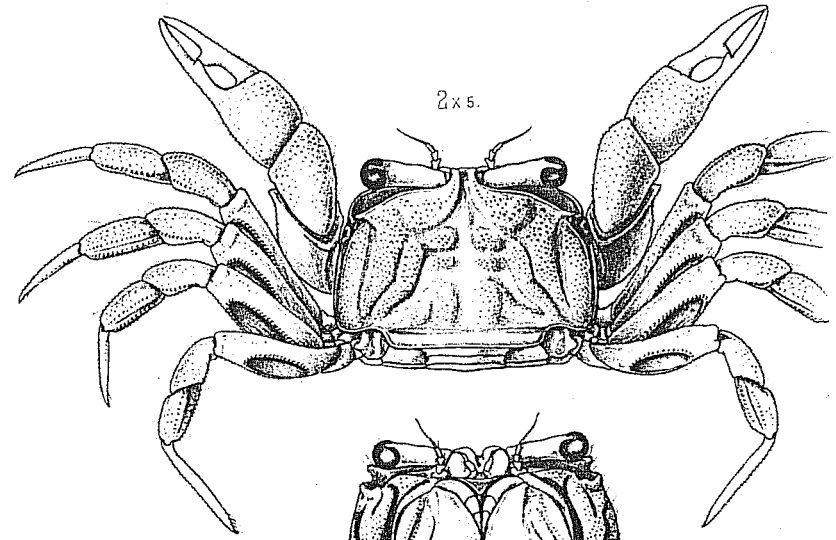
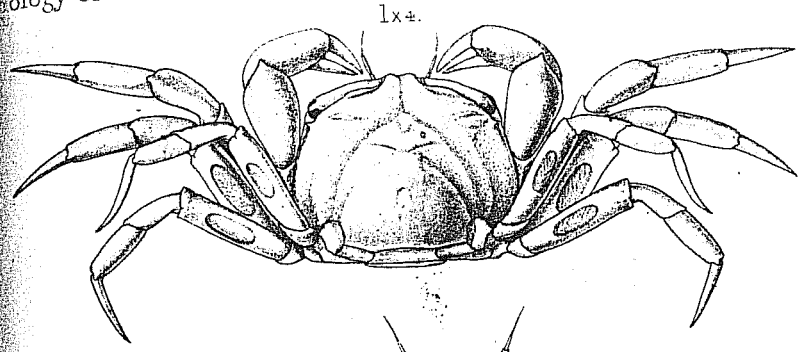
Figs. 1, 1a, 1b.—*Dotilla affinis*, Alcock, Materials for a Carcinological Fauna of India, No. 6. The Brachyura Catometopa or Grapsoidea. Journal of the Asiatic Society of Bengal, Vol. LXIX, part 2, 1900, p. 365.

Figs. 2, 2a.—*Dotilla clepsydrodactylus*, Alcock. *Op. cit.*, p. 367.

Figs. 3, 3a.—*Dotilla blanfordi*, Alcock. *Op. cit.*, p. 366.

Figs. 4, 4a, 4b.—*Scopimera investigatoris*, Alcock. *Op. cit.*, p. 369.

Figs. 5, 5a, 5b.—*Scopimera crabricauda*, Alcock. *Op. cit.*, p. 370.



1 *Dotilla affinis*. 2. *Dotilla clepsydrodactylus*. 3. *Dotilla blanfordi*.

EXPLANATION OF PLATE.

—+—
CRUSTACEA.
—+—

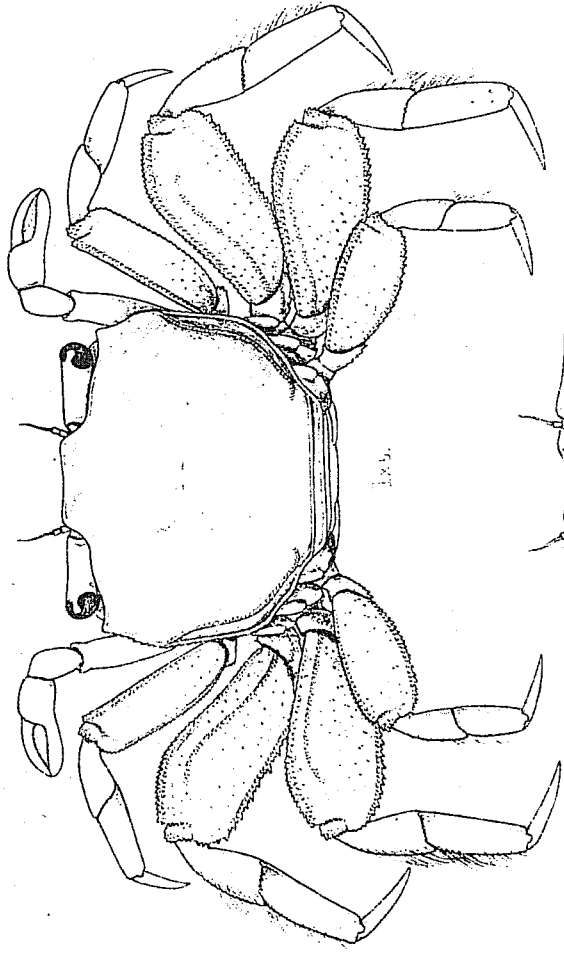
PLATE LXIV.

figs. 1, 1a.—*Clistostoma dotilliforme*, Alcock, Materials for a Zoological Fauna of India, No. 6. The Brachyura Catometopa suborder. Journal of the Asiatic Society of Bengal, Vol. 30, part 2, 1900, p. 373.

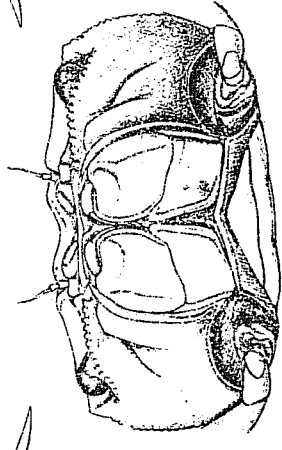
figs. 2, 2a, 2b, 2c.—*Tylodiola indica*, Alcock, *Op. cit.*,

fig. 3.—*Hymenicus wood-masoni*, Alcock, ♂. *Op. cit.*, p. 388.

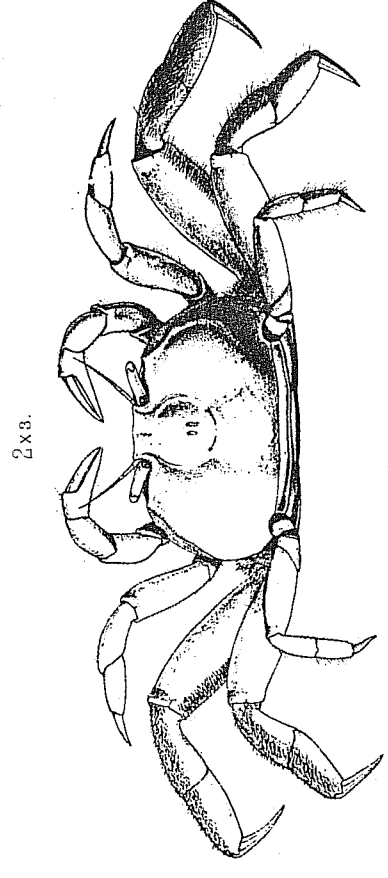
fig. 4.—*Elamena sindensis*, Alcock, ♂. *Op. cit.*, p. 386.



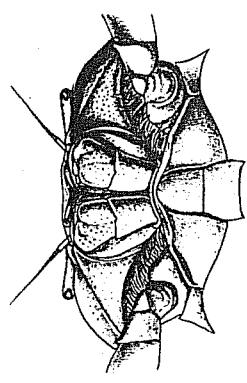
1x3.



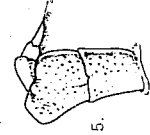
1a x 6.



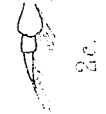
2x3.



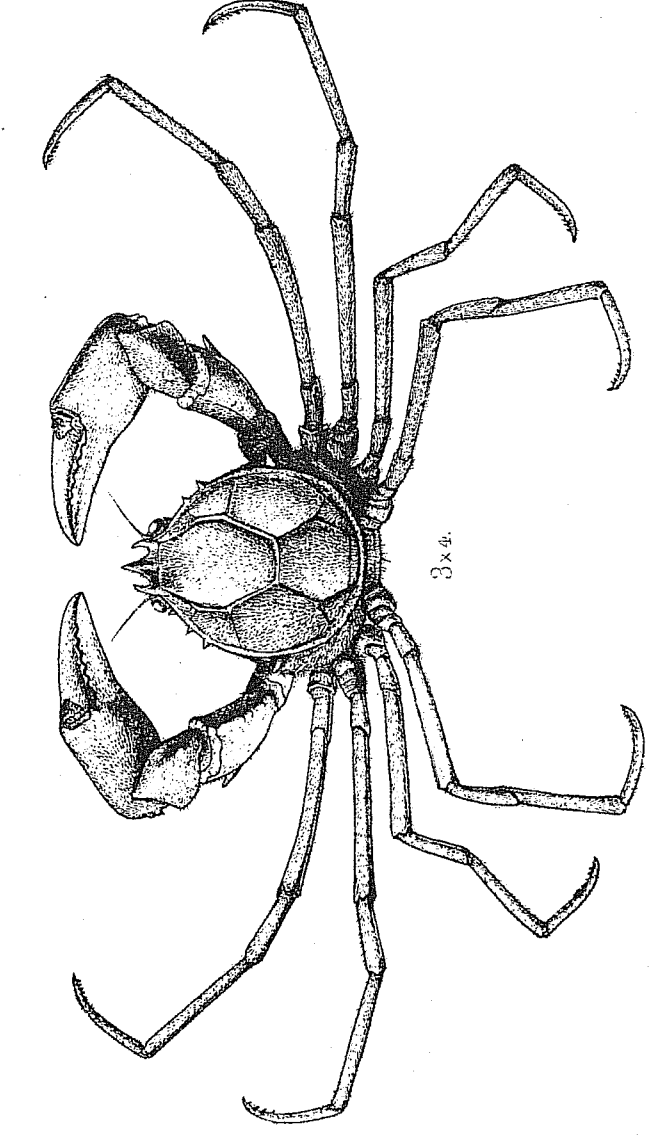
2a x 4.



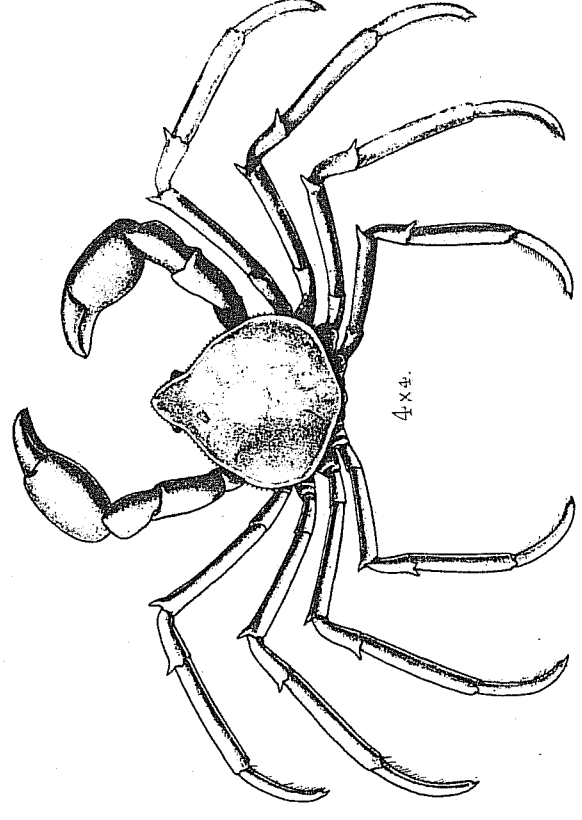
2b x 5.



2c.



3x4.



4x4.

EXPLANATION OF PLATE.

—+—
CRUSTACEA.
—+—

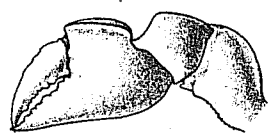
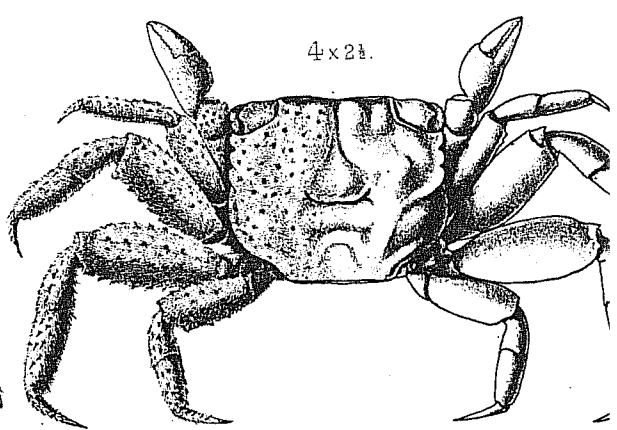
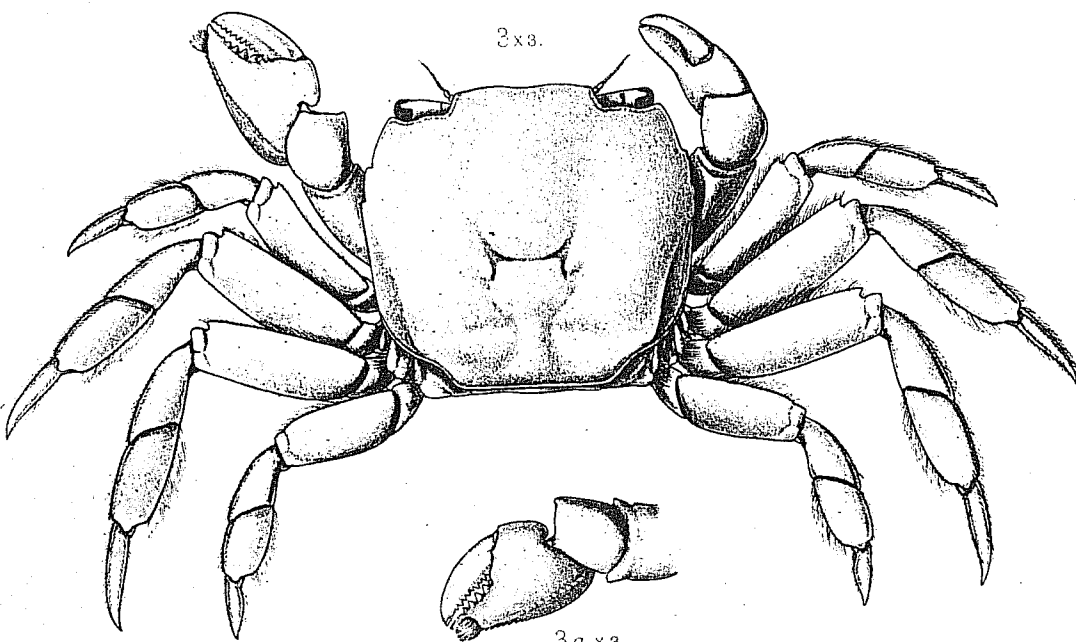
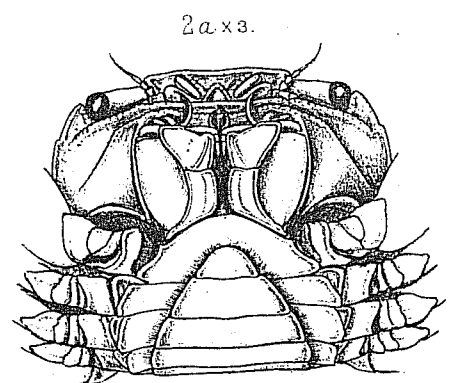
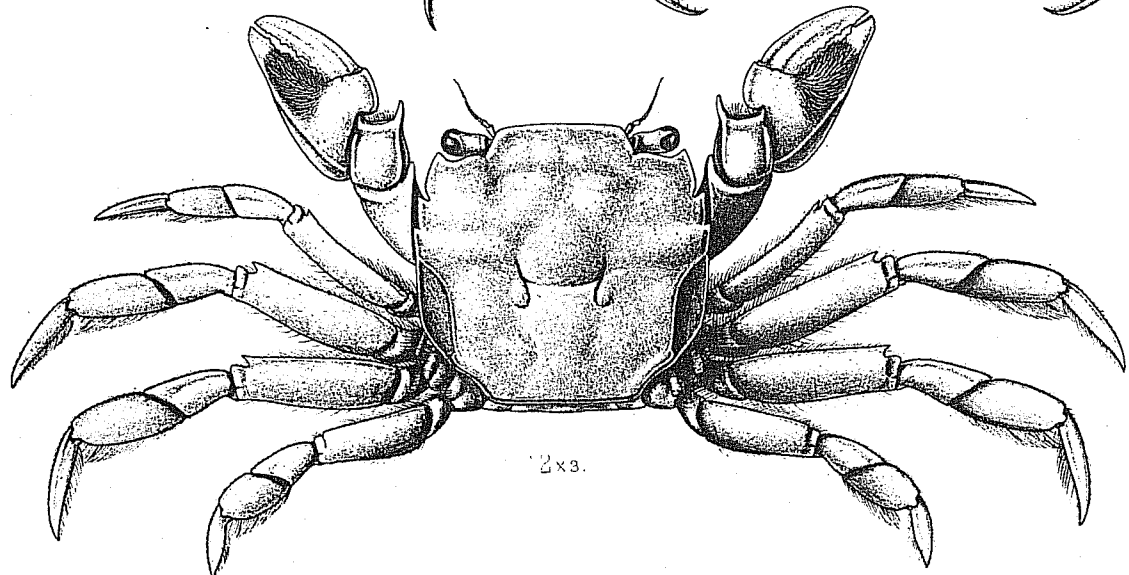
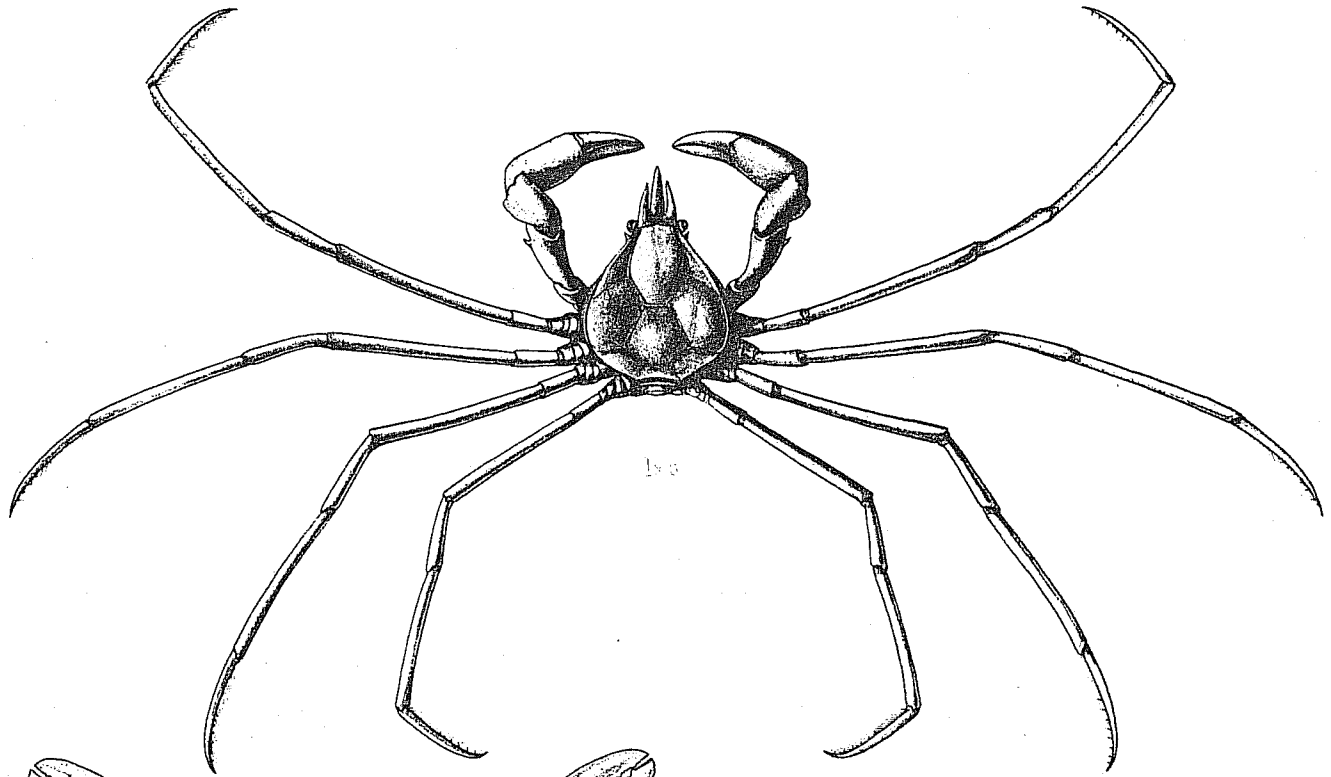
PLATE LXV.

Fig. 1.—*Hymenicus inachoides*, Alcock ♂. Materials for a Carcinological Fauna of India, No. 6. The Brachyura Catometopa or Grapsoidea. Journal of the Asiatic Society of Bengal, Vol. LXIX, part 2, 1900, p. 388.

Figs. 2, 2a.—*Ptychognathus onyx*, Alcock. *Op. cit.*, p. 404.

Figs. 3, 3a.—*Ptychognathus andamanica*, Alcock, *loc. admodum cit.*

Figs. 4, 4a.—*Sesarma lanatum*, Alcock ♂. *Op. cit.*, p. 418.



EXPLANATION OF PLATE.

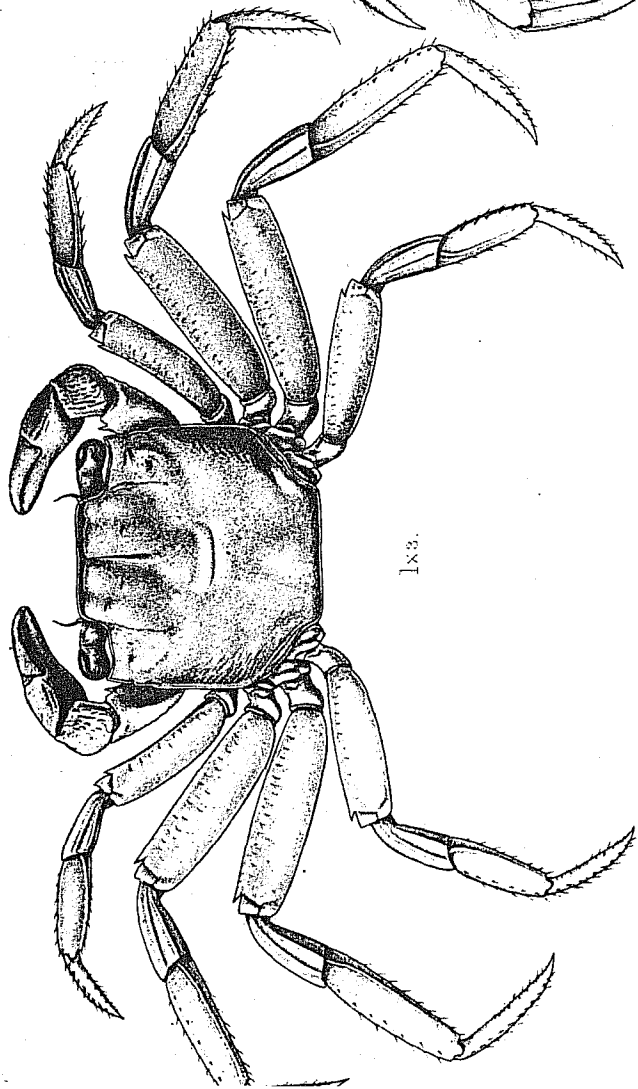
—+—
CRUSTACEA.
—+—

PLATE LXVI.

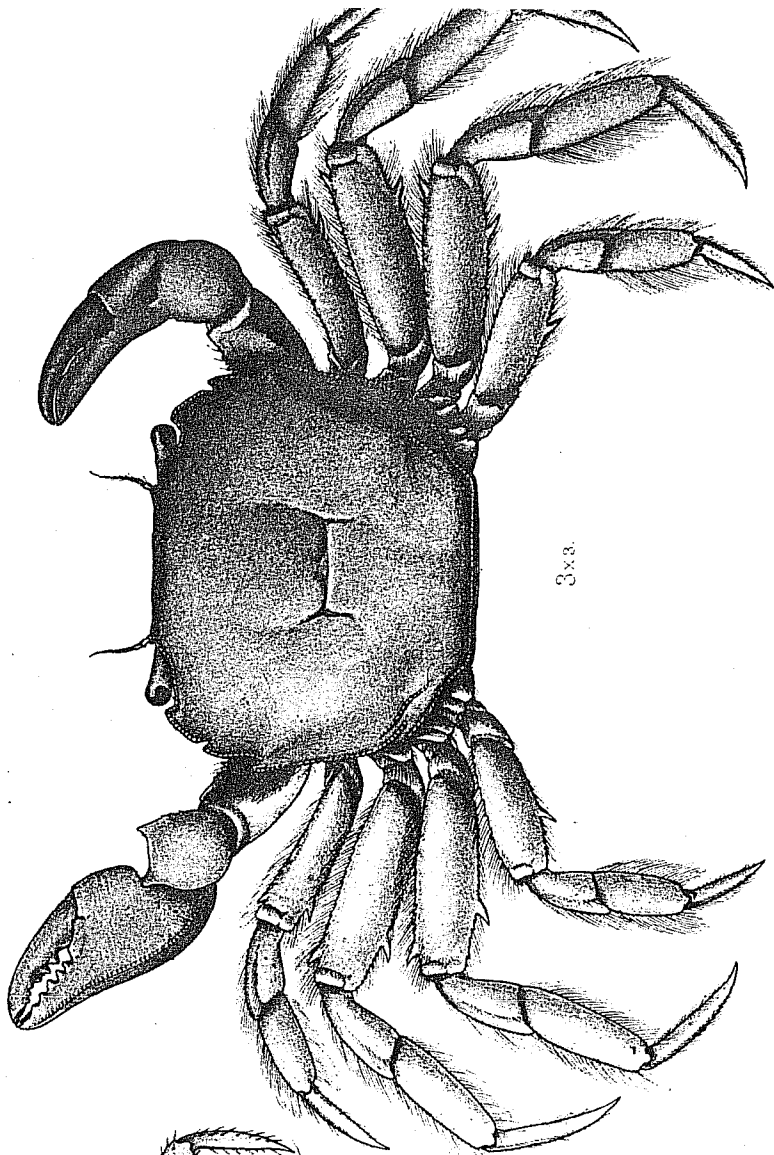
Fig. 1.—*Sesarma finni*, Alcock, Materials for a Carcinological Fauna of India, No. 6. The Brachyura Catometopa or Grapsoidea. Journal of the Asiatic Society of Bengal, Vol. LXIX, part 2, 1900, p. 424.

Fig. 2.—*Sesarma latifemur*, Alcock. *Op. cit.*, p. 421.

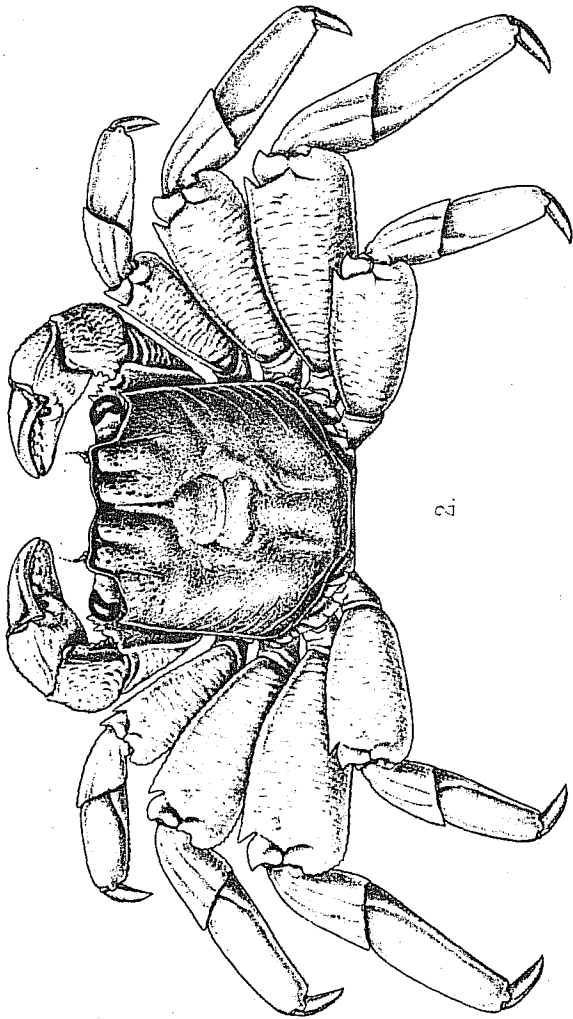
Figs. 3, 3a.—*Pyxidognathus fluviatilis*, Alcock, *Op. cit.*, p. 408.



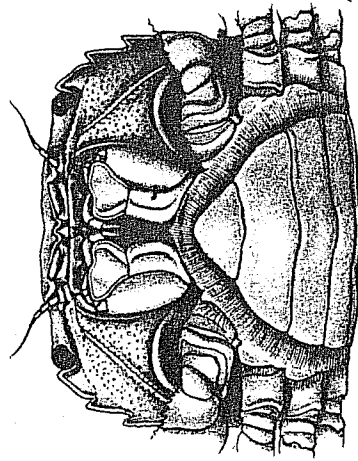
1x3.



3x3.



2.



3a.x3.

1. *Sesarma finni*. 2. *Sesarma latifemur*. 3. *Pyxidognathus fluviatilis*.

EXPLANATION OF PLATE.

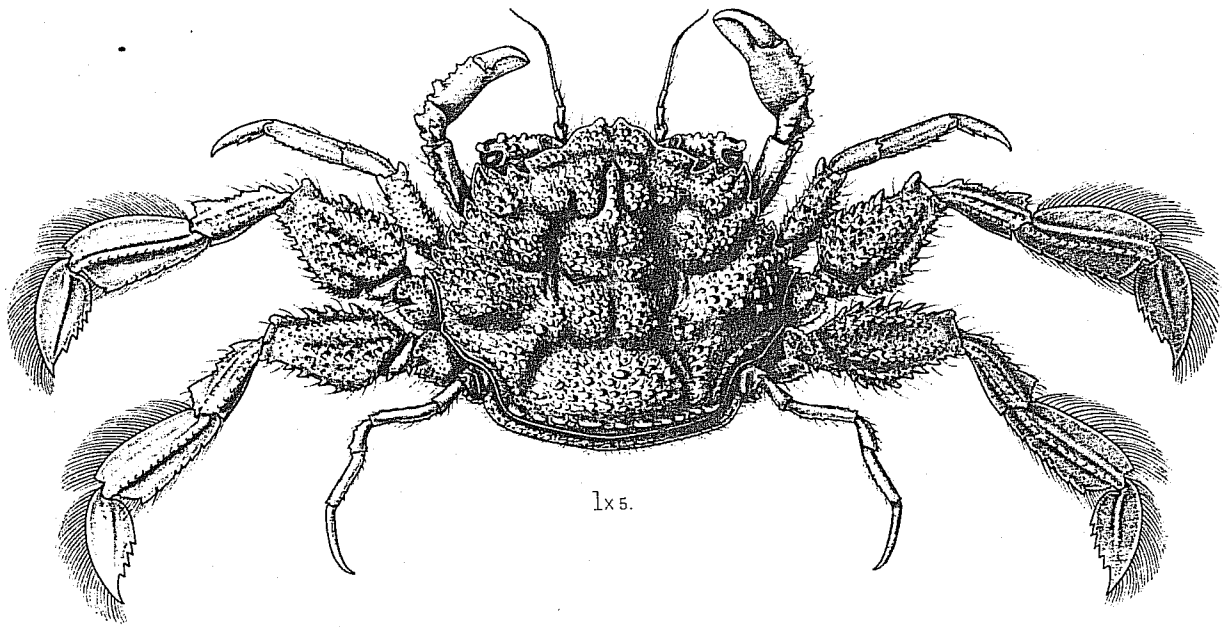
CRUSTACEA.

PLATE LXVII.

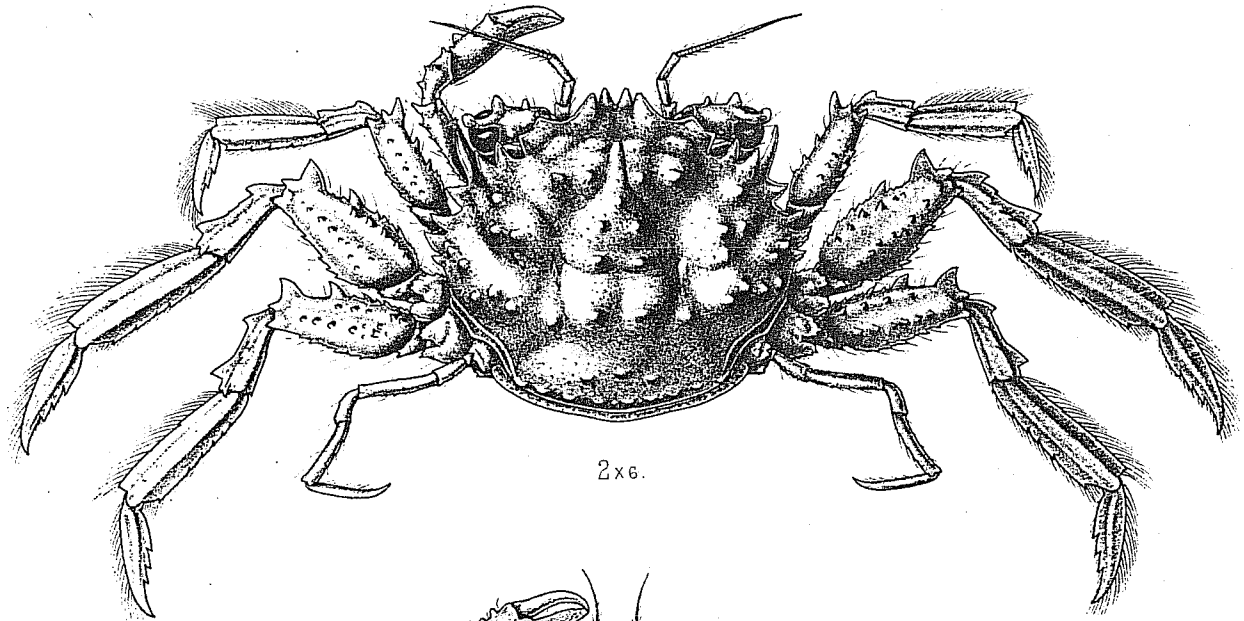
Fig. 1.—*Palicus serripes*, Alc. & And. Alcock, Materials for a Carcinological Fauna of India, No. 6. The Brachyura Catometopa or Grapsoidea. Journal of the Asiatic Society of Bengal, Vol. LXIX, part 2, 1900, p. 454.

Fig. 2.—*Palicus investigatoris*, Alcock. *Op. cit.*, p. 455.

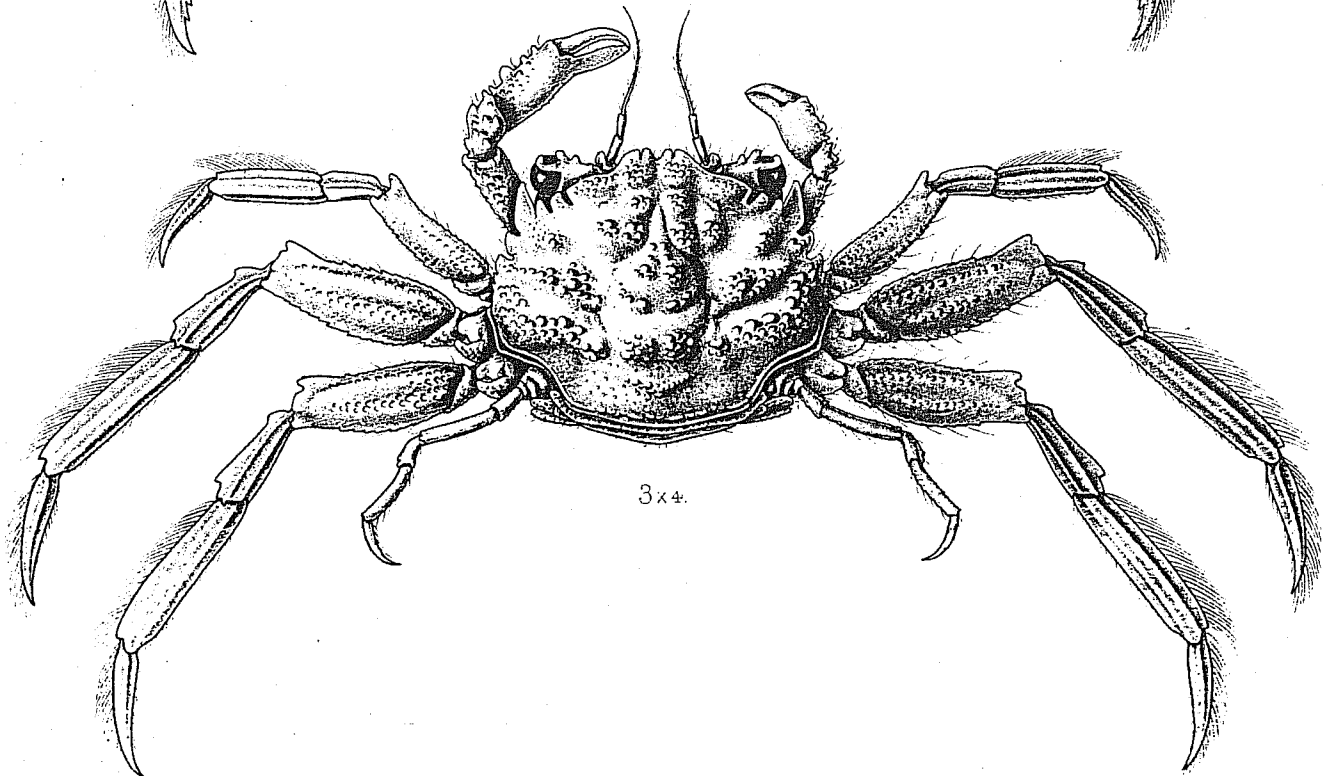
Fig. 3.—*Palicus wood-masoni*, Alcock. *Op. cit.*, p. 453.



1x5.



2x6.



3x4.

1. *Palicus serripes*. 2. *Palicus investigatoris*. 3. *Palicus wood-masoni*.