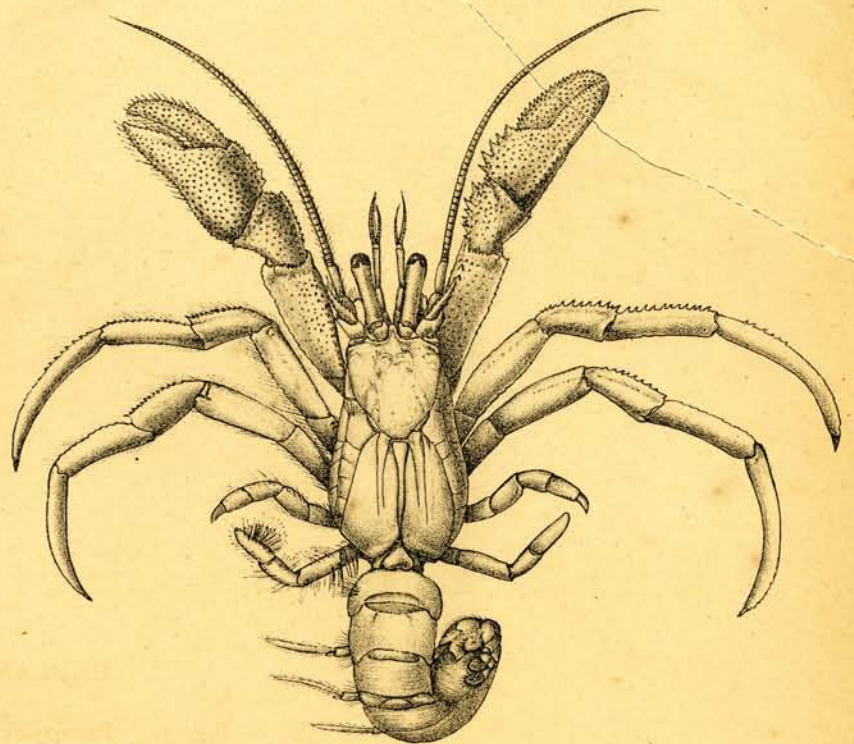


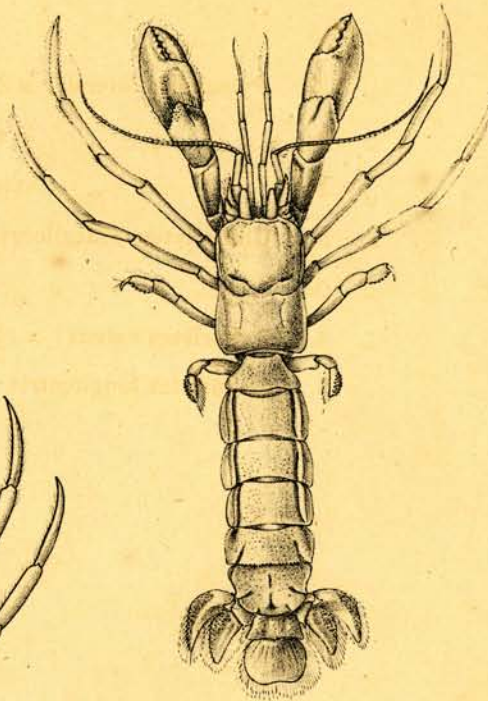
1a

1

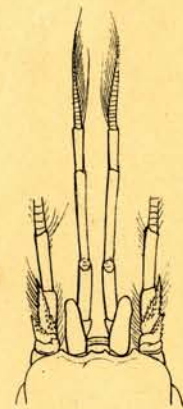
1b



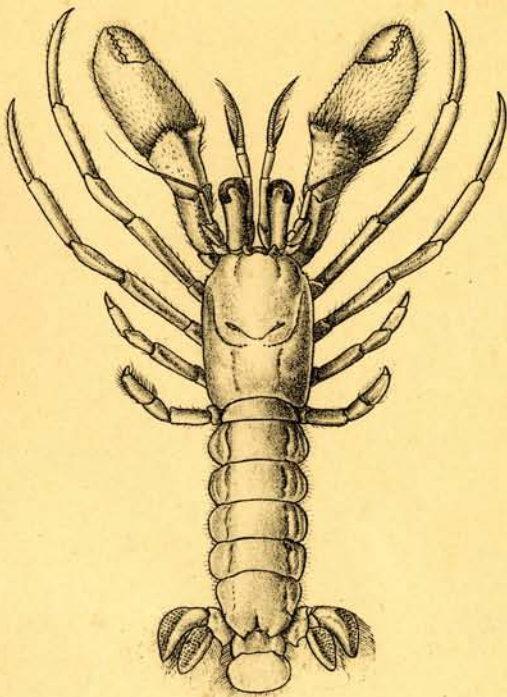
4



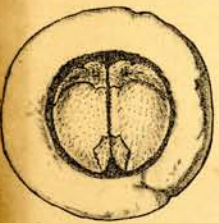
3



3a



2



2a



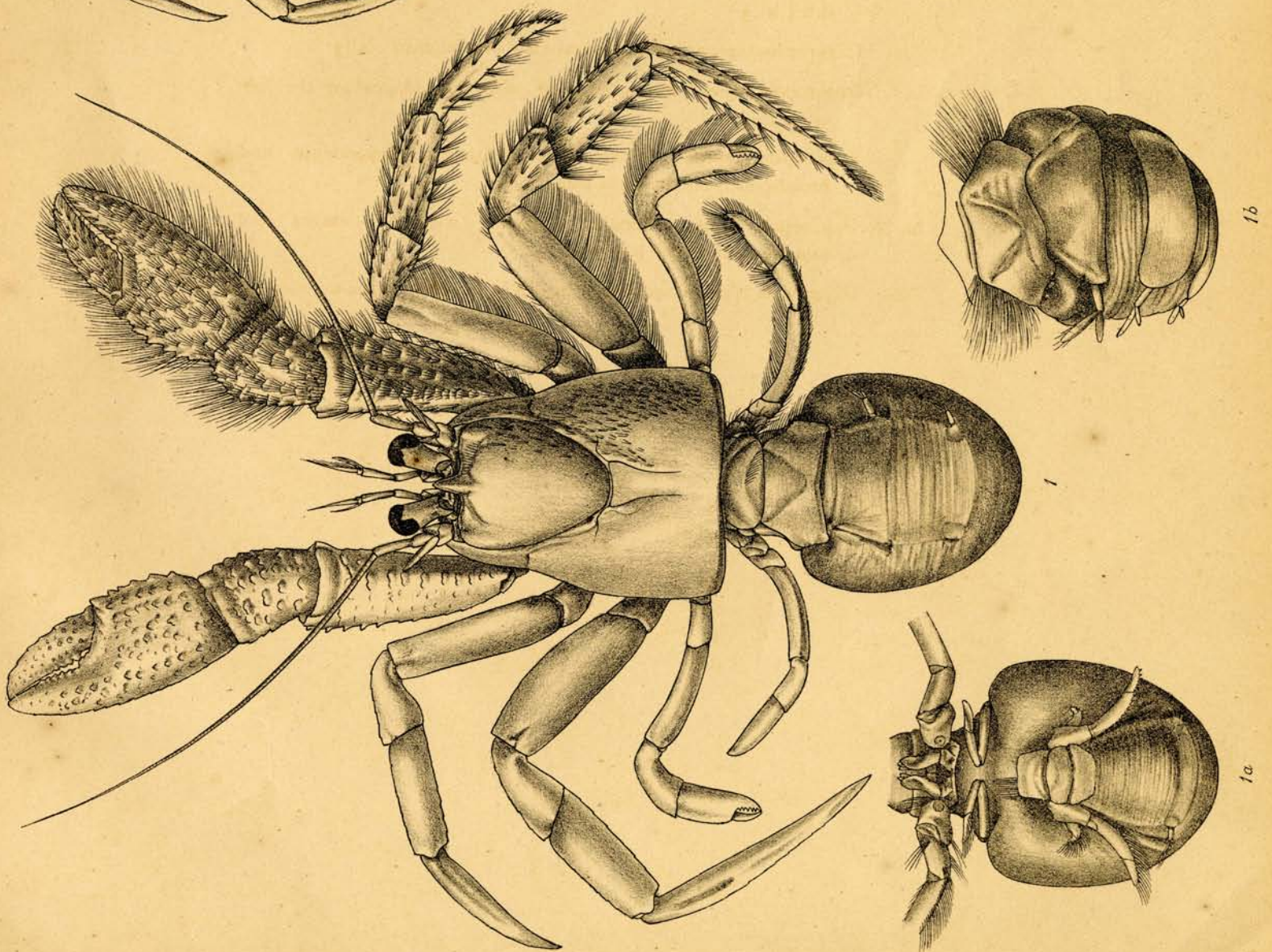
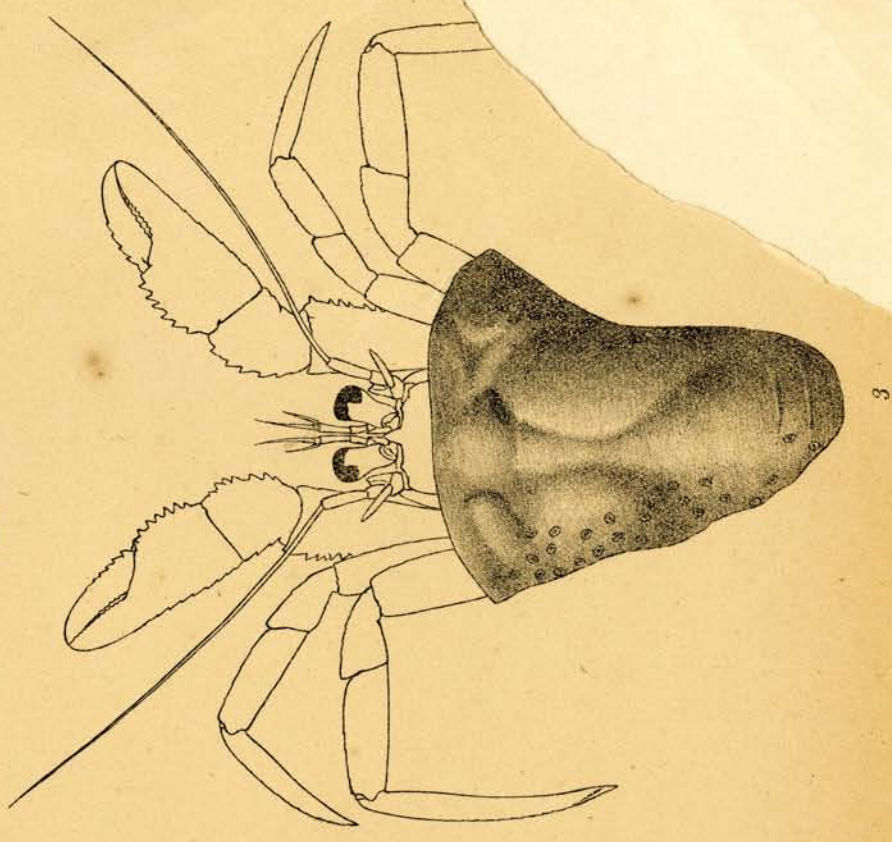
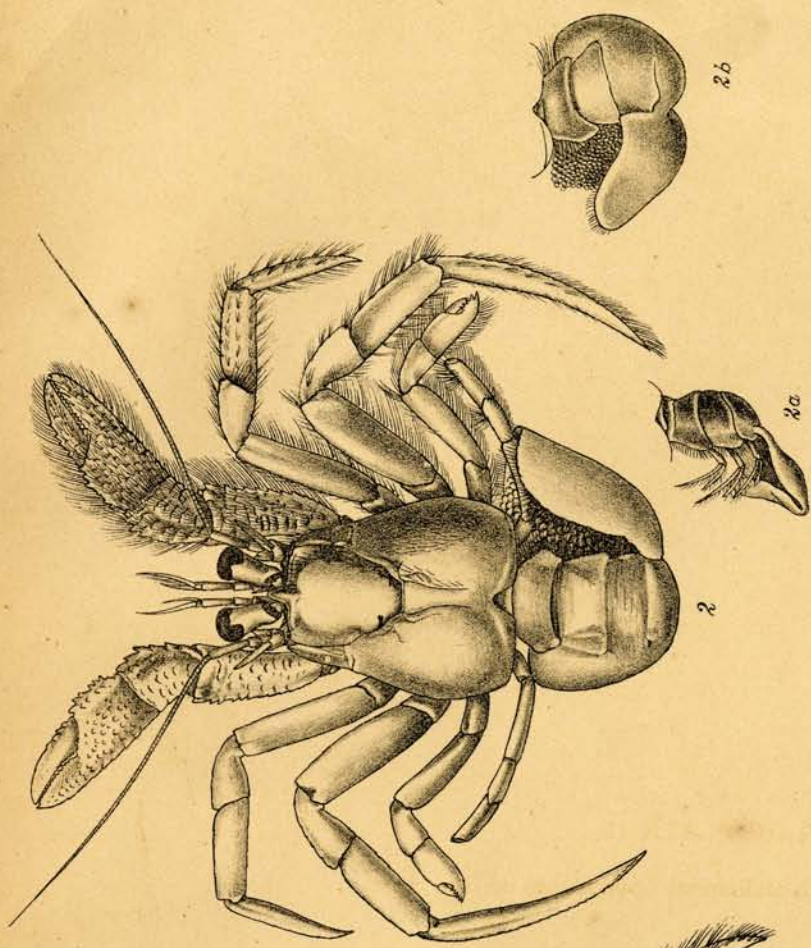
2b



5

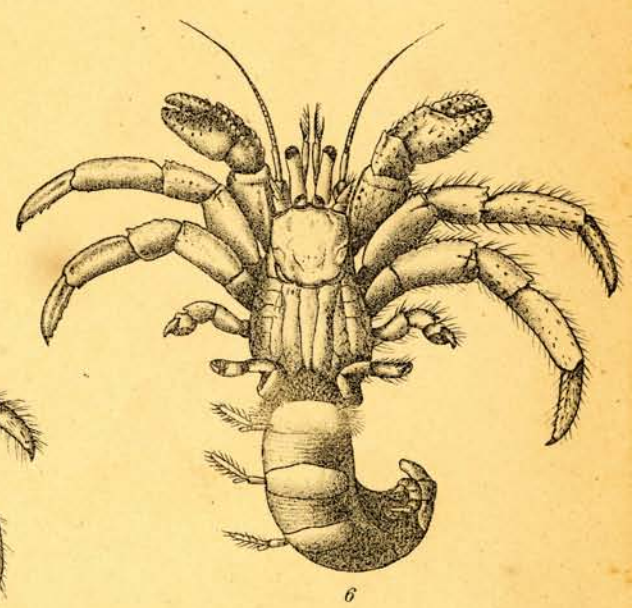
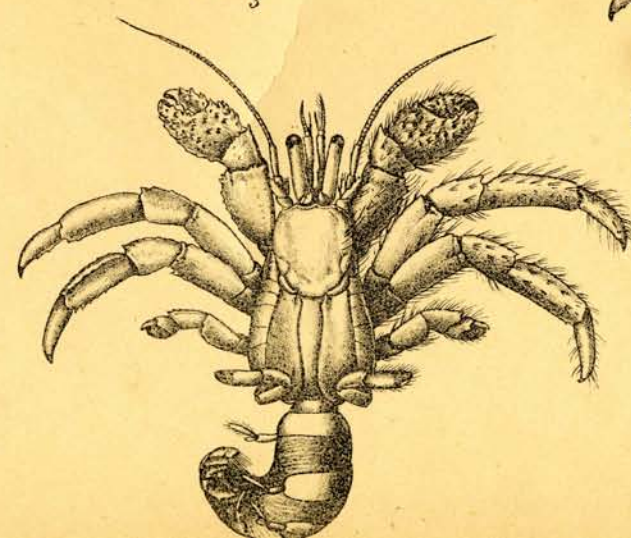
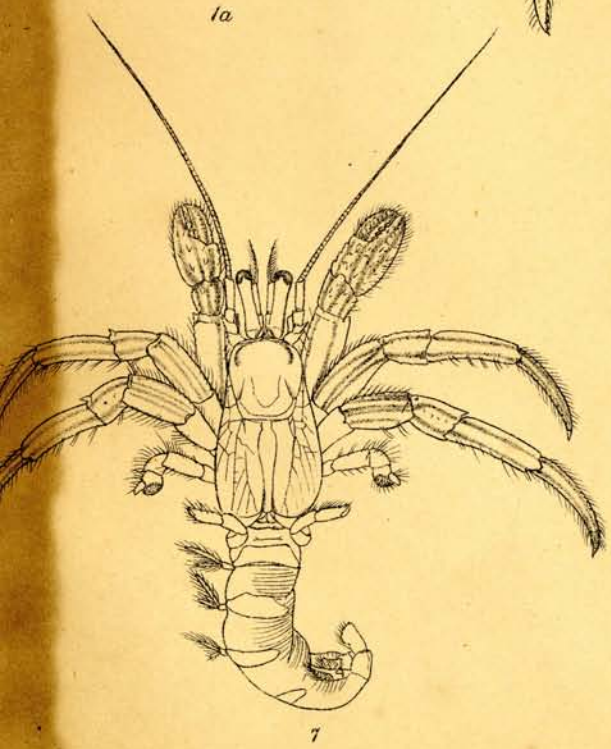
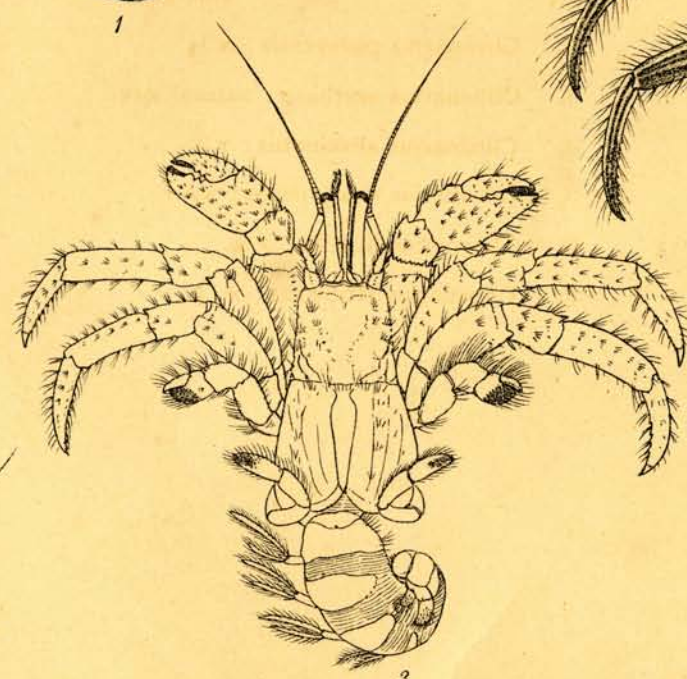
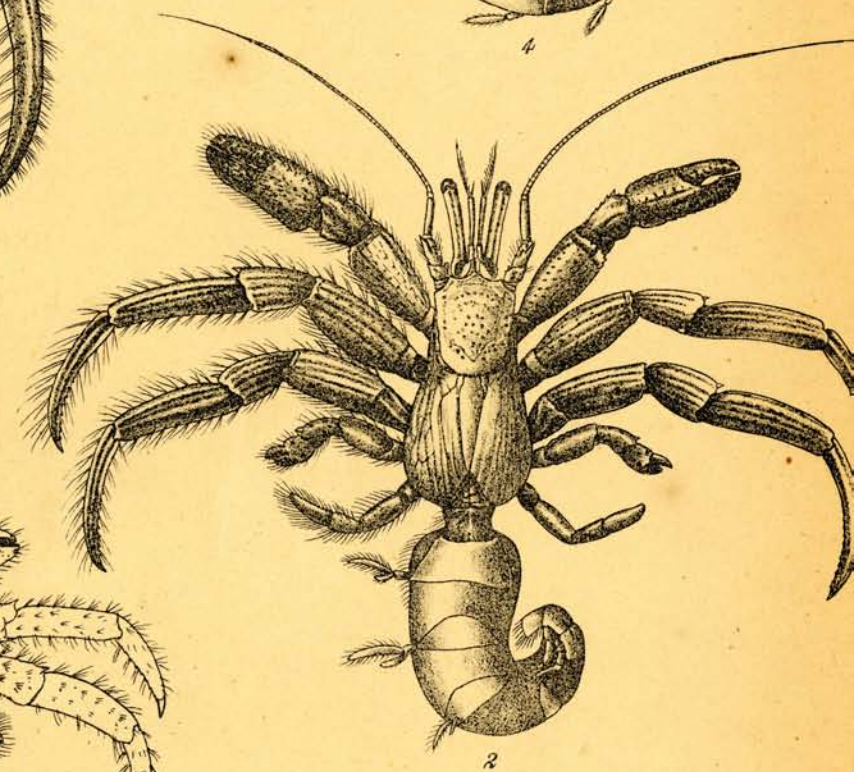
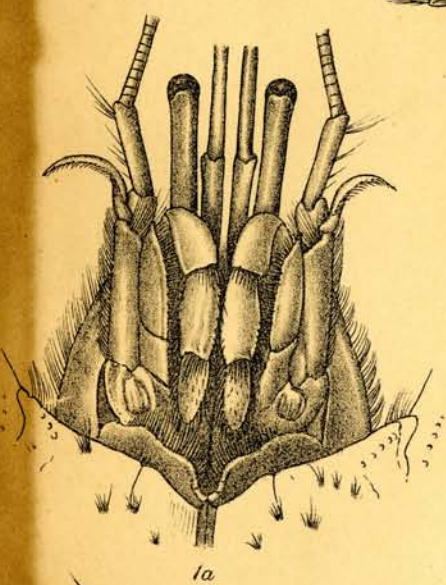
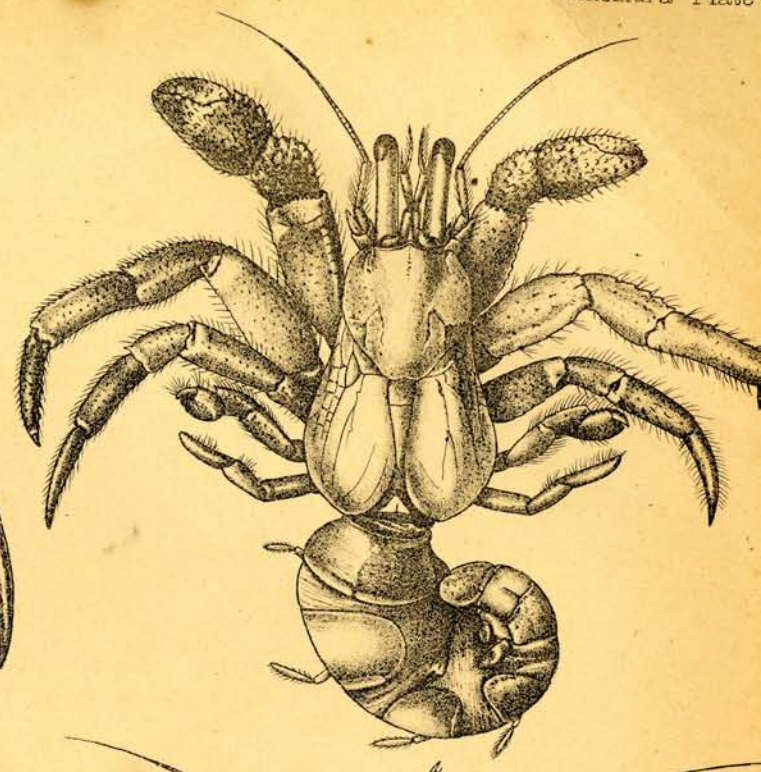
#### EXPLANATION OF PLATE II

- Fig. 1. Paguropsis typica : male, with abdominal appendages on the right side : x  $1\frac{1}{2}$
- „ 1a. Paguropsis typica : male, ventral view of abdomen : x  $1\frac{1}{2}$
- „ 1b. Paguropsis typica : male, abdomen with appendages on the left side : x  $1\frac{1}{2}$
- „ 2. Paguropsis typica : female, with abdominal appendages and brood-pouch on the right side : x  $1\frac{1}{2}$
- „ 2a, 2b. Paguropsis typica : female, abdomen with appendages and brood-pouch on the left side.
- „ 3. Paguropsis typica : specimen clothed in its coat of sea-anemones : x  $1\frac{1}{2}$



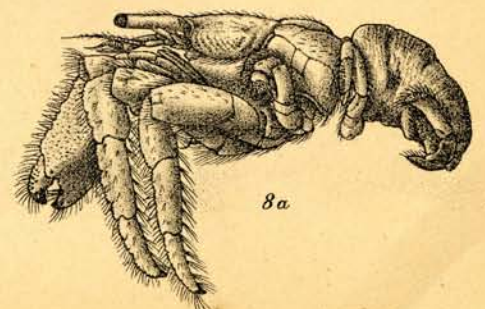
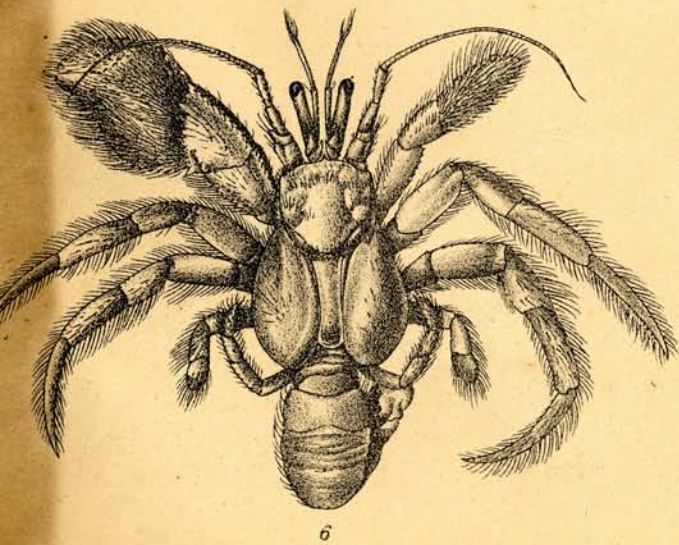
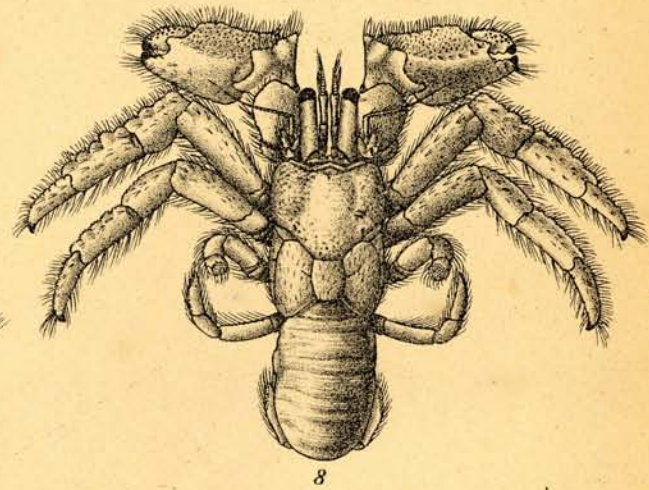
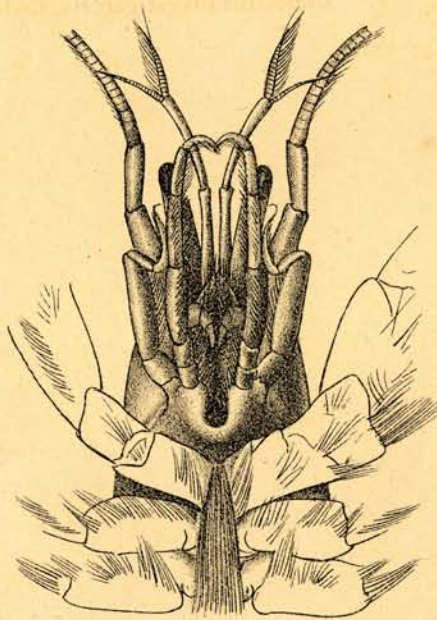
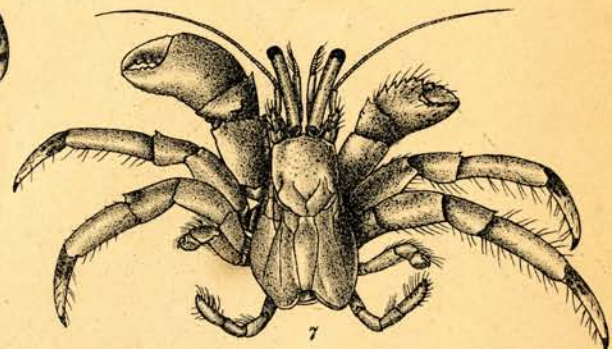
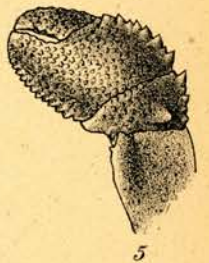
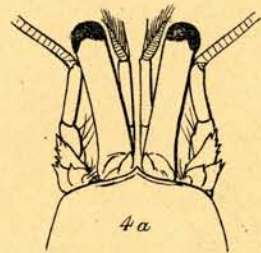
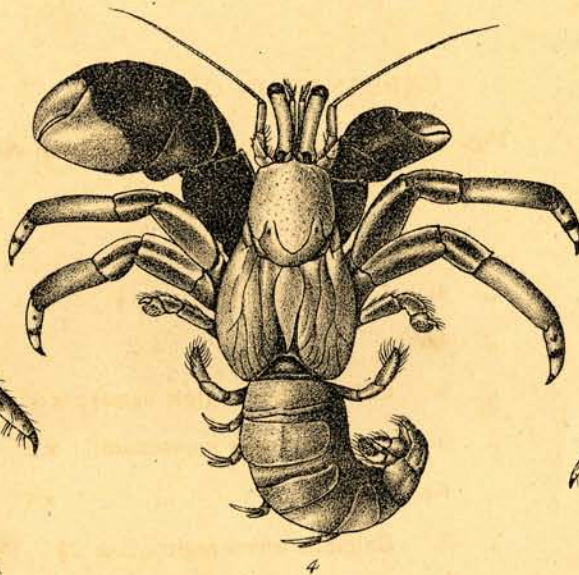
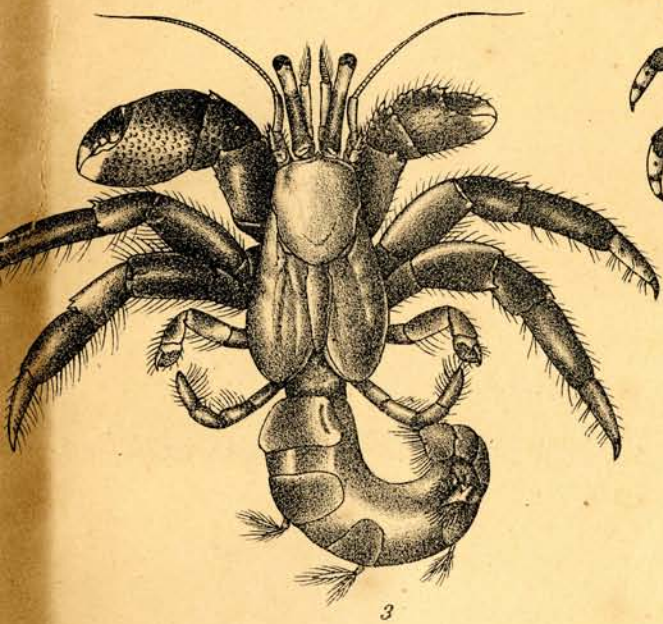
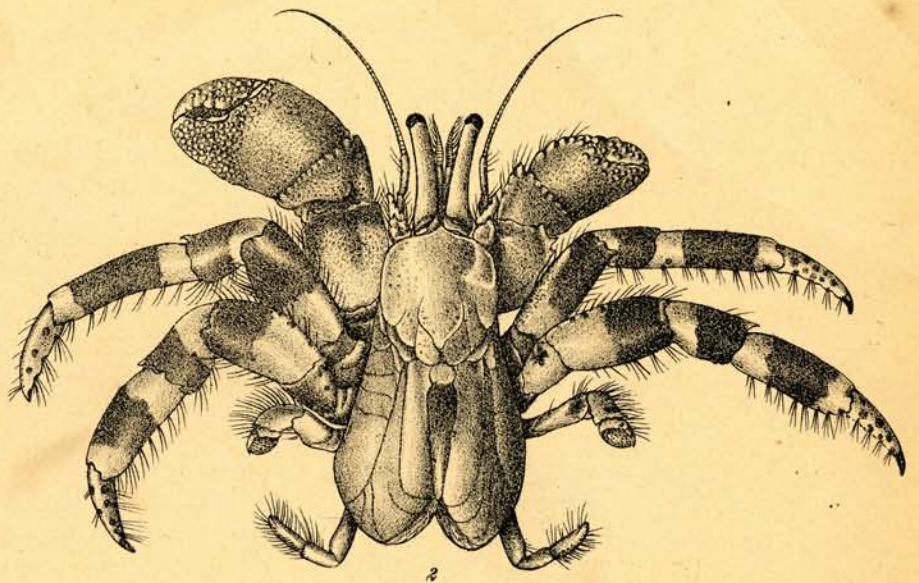
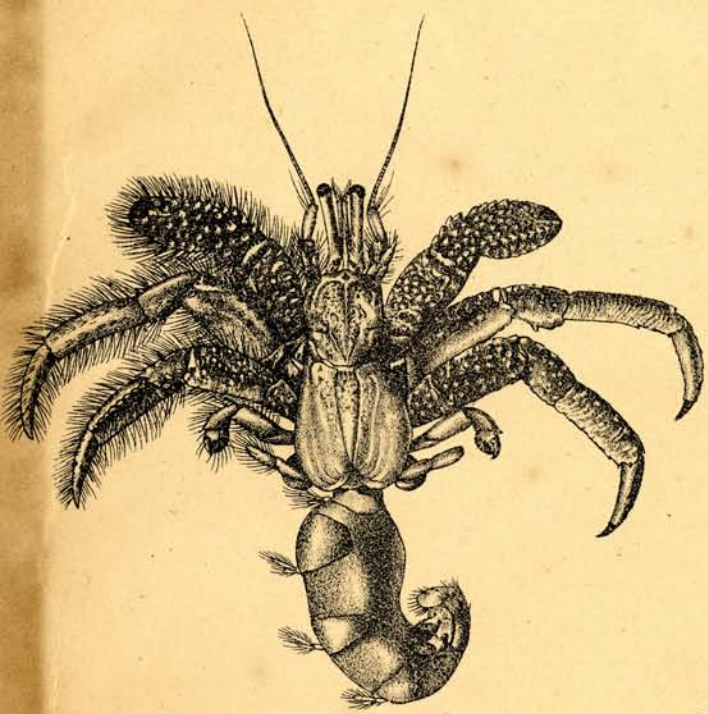
EXPLANATION OF PLATE IV

- Fig. 1. *Clibanarius clibanarius* : natural size.  
" 1a. " " enlarged.  
" 2. *Clibanarius padavensis* :  $\times 1\frac{1}{2}$   
" 3. *Clibanarius arethusa* : natural size.  
" 4. *Clibanarius albicinctus* :  $\times 3$   
" 5. *Clibanarius merguiensis* :  $\times 3$   
" 6. *Clibanarius humilis* :  $\times 3$   
" 7. *Clibanarius striolatus* :  $\times 1\frac{1}{2}$



EXPLANATION OF PLATE V

- Fig. 1. *Clibanarius corallinus* : natural size.  
" 2. *Calcinus elegans* : x 2  
" 3. *Calcinus gaimardi* : x 1½  
" 4. *Calcinus herbstii* : x 1½  
" 4a. " " x 2  
" 5. *Calcinus latens* (left hand) : x 4  
" 6. *Troglopagurus jousseaumii* : x 2  
" 6a. " " x 4  
" 7. *Calcinus terræ-reginæ* : x 2½  
" 8. *Cancellus investigatoris*, male : x 3  
" 8a. " " " x 3



EXPLANATION OF PLATE VI

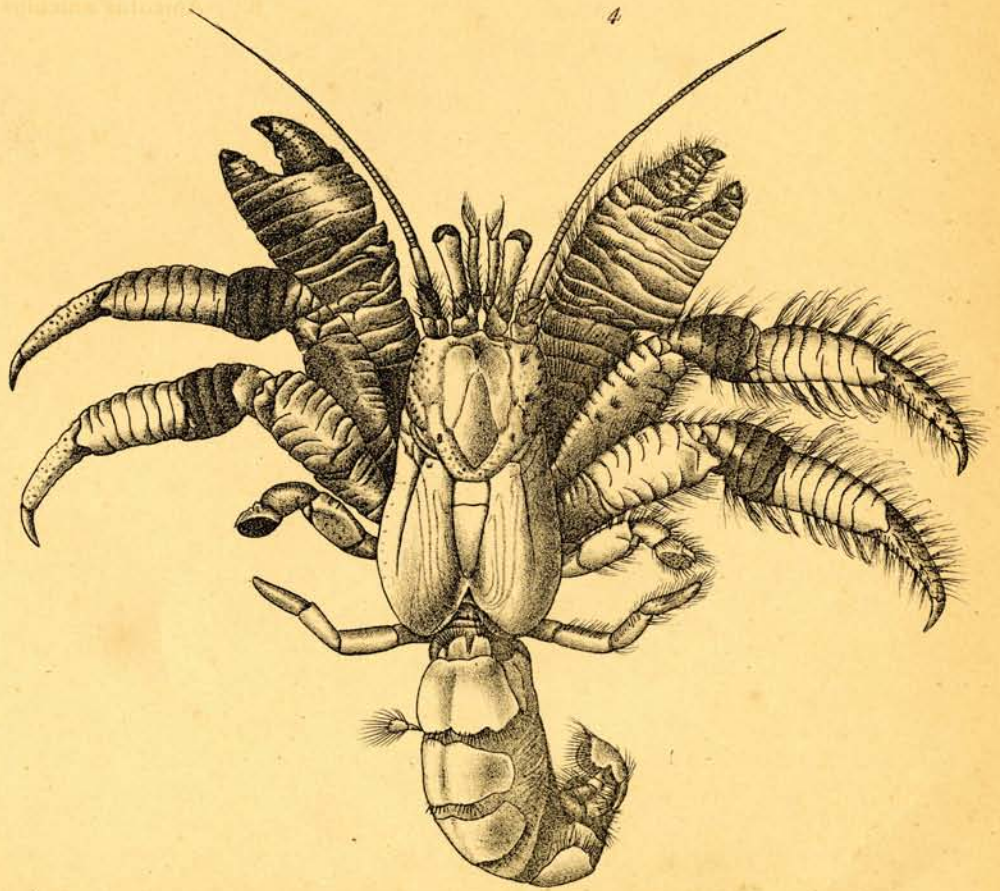
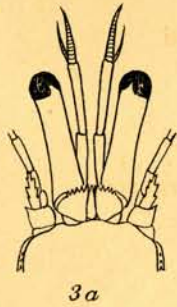
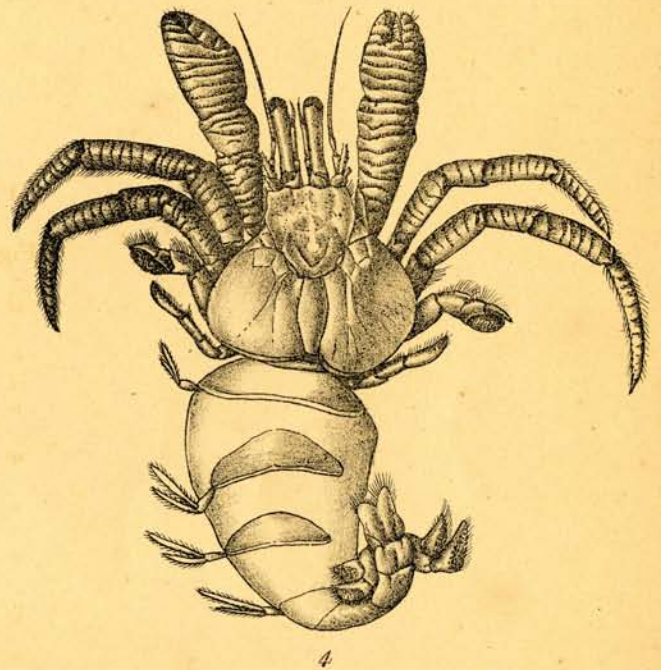
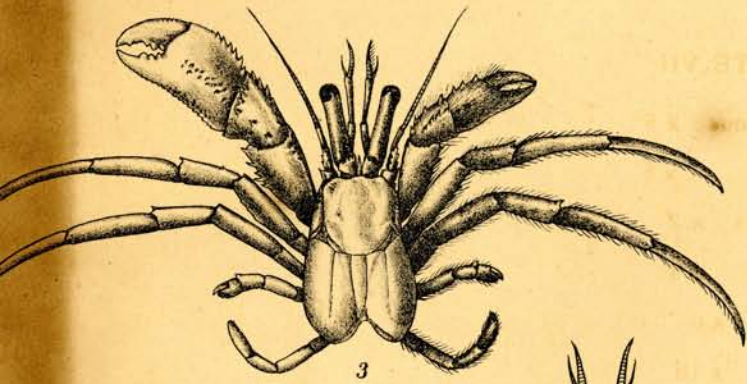
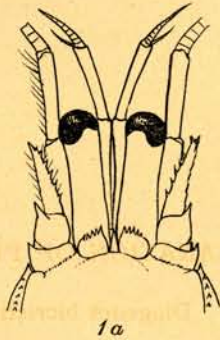
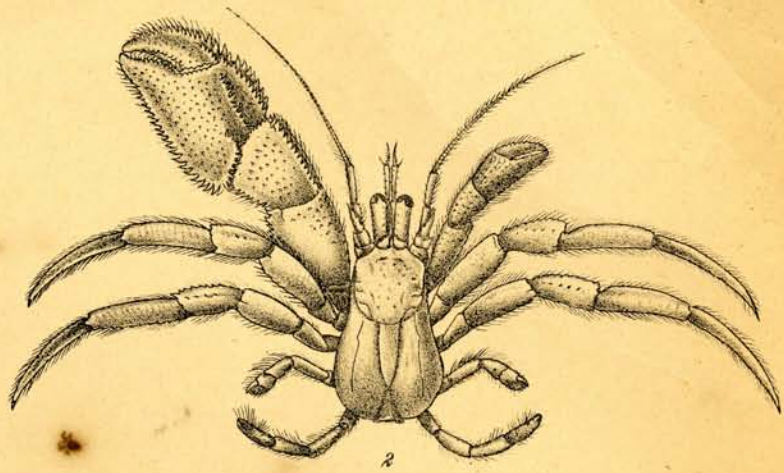
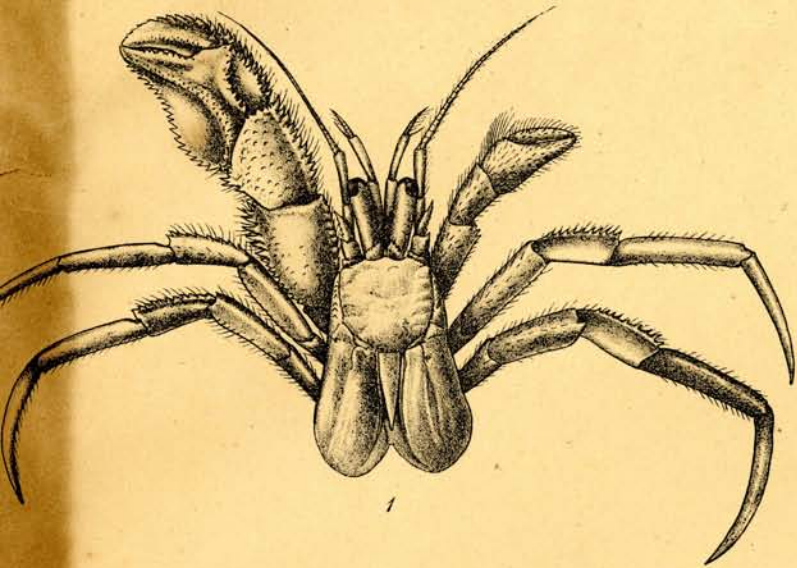
- Fig. 1. *Diogenes custos* Fabr.: natural size.  
" 1a. " " " anterior end : x 2  
" 2. *Diogenes custos* Fabr. *var. affinis*: natural size.  
" 2a. " " " " " x 2  
" 3. *Diogenes custos* Fabr. *var. planimanus*: natural size.  
" 3a. " " " " " x 3  
" 4. *Diogenes custos* Fabr. *var. violaceus* : x 2  
" 4a. " " " " " x 4  
" 5. *Diogenes miles* Herbst : natural size.  
" 5a. " " " " x 3  
" 6. *Diogenes avarus*, adult male : x 2  
" 6a. " " " " " x 4  
" 7. *Diogenes costatus* : x 1½  
" 7a. " " " " x 4  
" 8. *Diogenes rectimanus* : x 2  
" 8a. " " " " x 4  
" 9. *Diogenes investigatoris* : x 2  
" 9a. " " " " x 4  
" 9b. " " " left hand : x 4





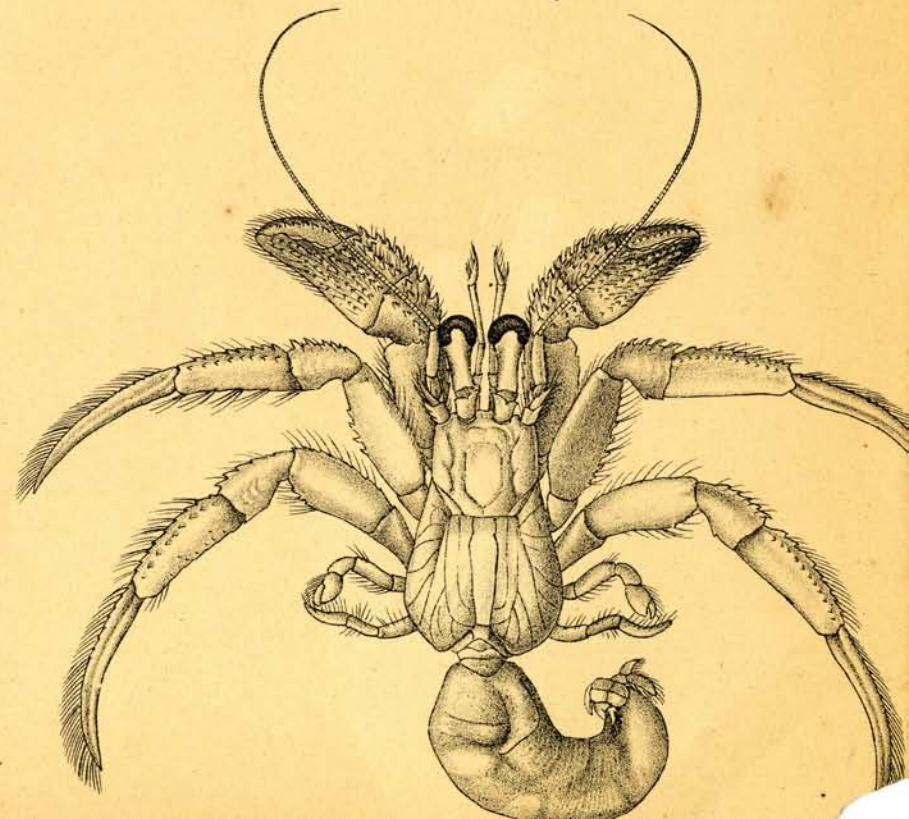
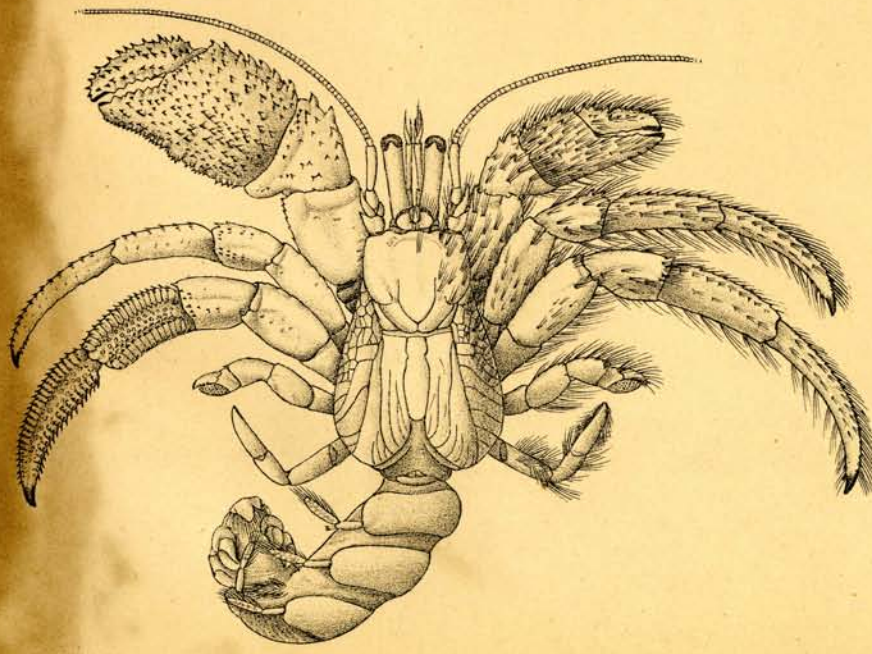
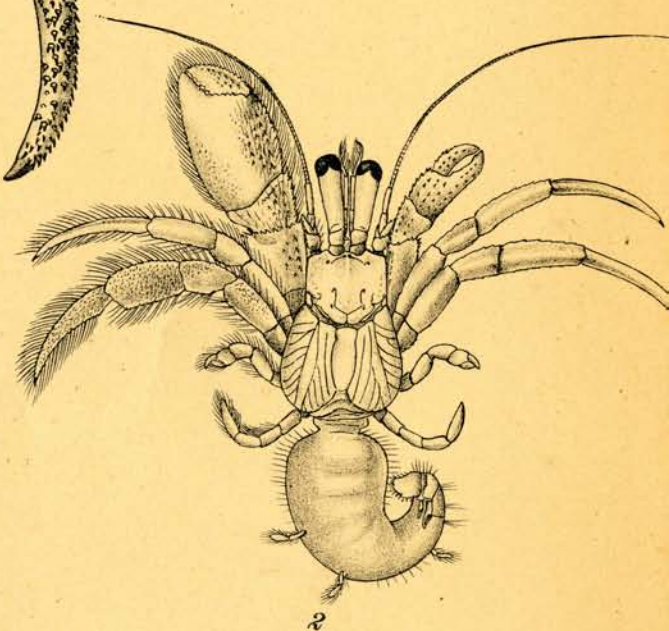
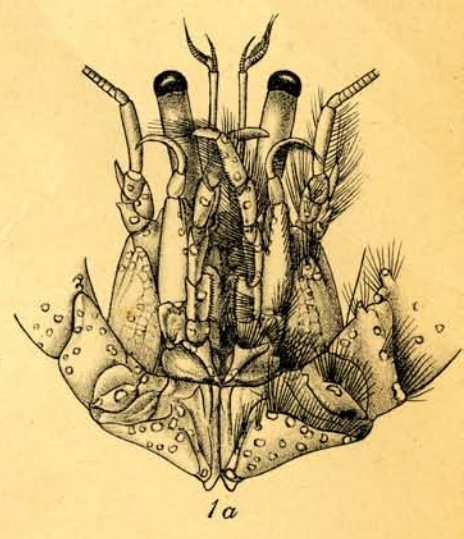
EXPLANATION OF PLATE VII

- Fig. 1. *Diogenes bicristimanus* : x 5  
,, 1a. ,, ,, x 8  
,, 2. *Diogenes rectimanus* : x 2  
,, 2a. ,, ,, x 4  
,, 3. *Diogenes Gardineri* : x 6  
,, 3a. ,, ,, x 10  
,, 4. *Aniculus strigatus* : x 2  
,, 5. *Aniculus tenebrarum* : x 3  
,, 6. *Aniculus aniculus* : natural size.



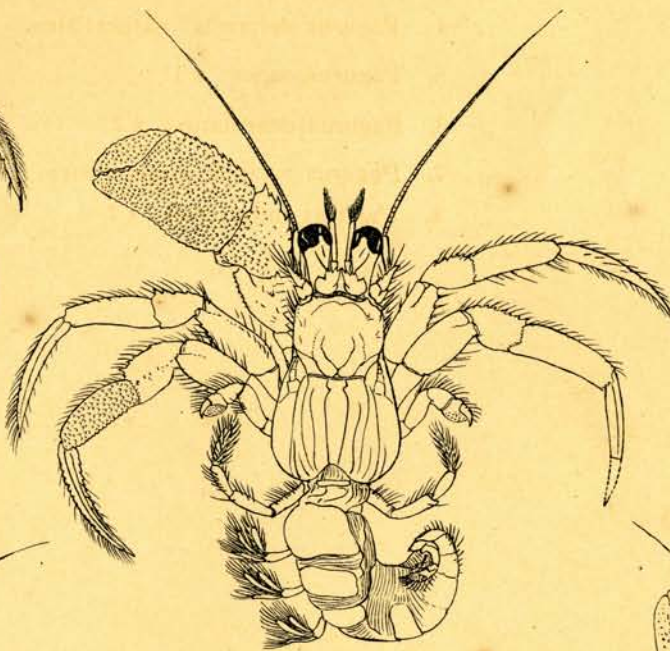
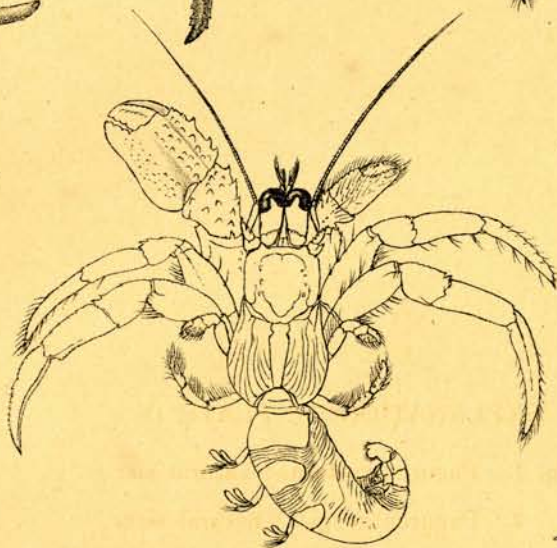
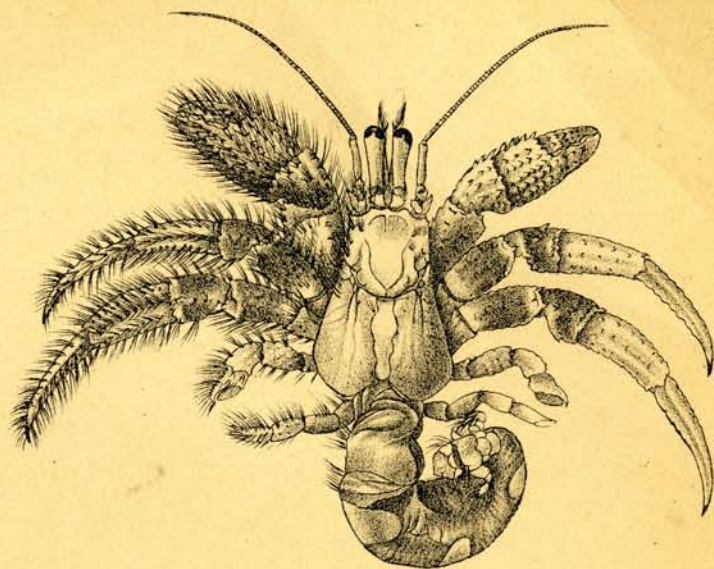
EXPLANATION OF PLATE VIII

- Fig. 1. *Pagurus punctulatus* : natural size.  
„ 1a. „ „ mouth-parts.  
„ 2. *Pagurus fabimanus* : x  $2\frac{1}{2}$   
„ 3. *Pagurus setifer* ; natural size.  
„ 4. *Pagurus hessii* : natural size.



EXPLANATION OF PLATE IX

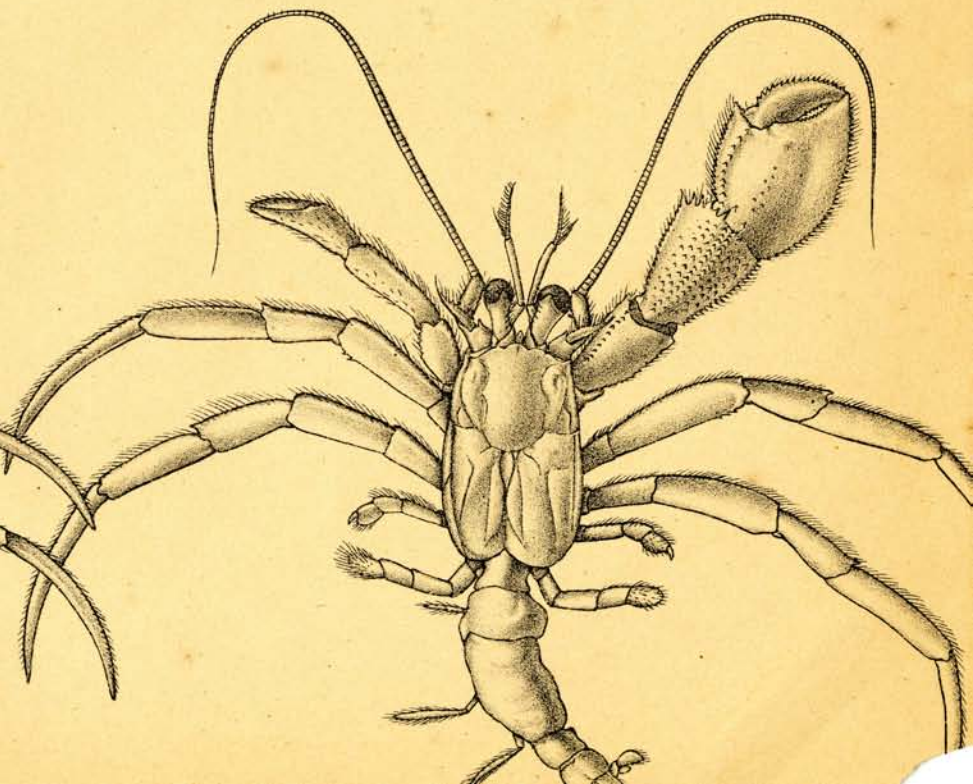
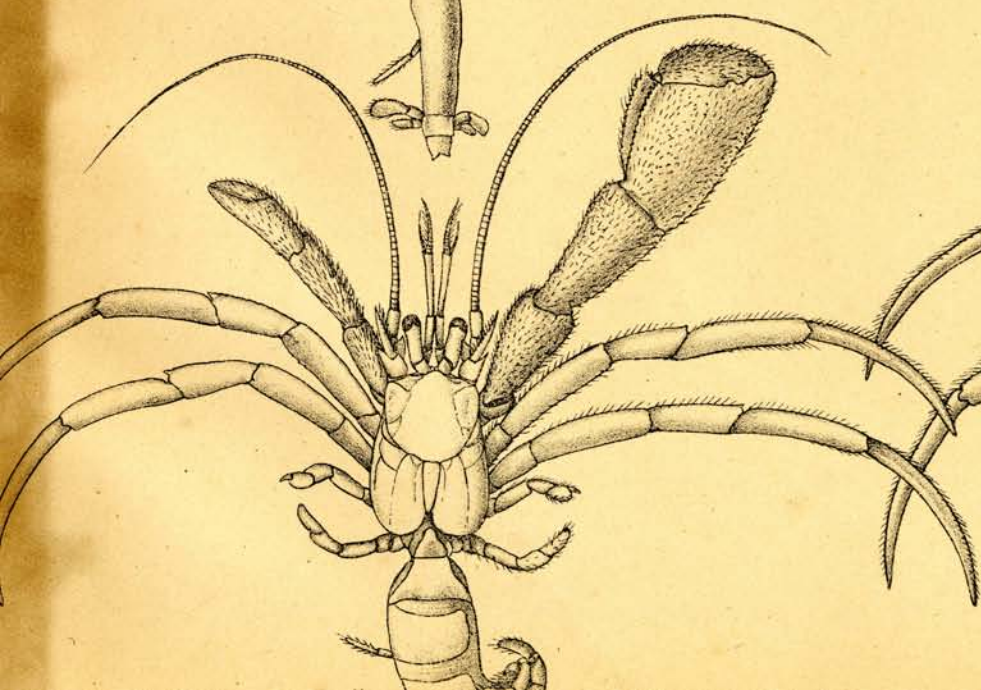
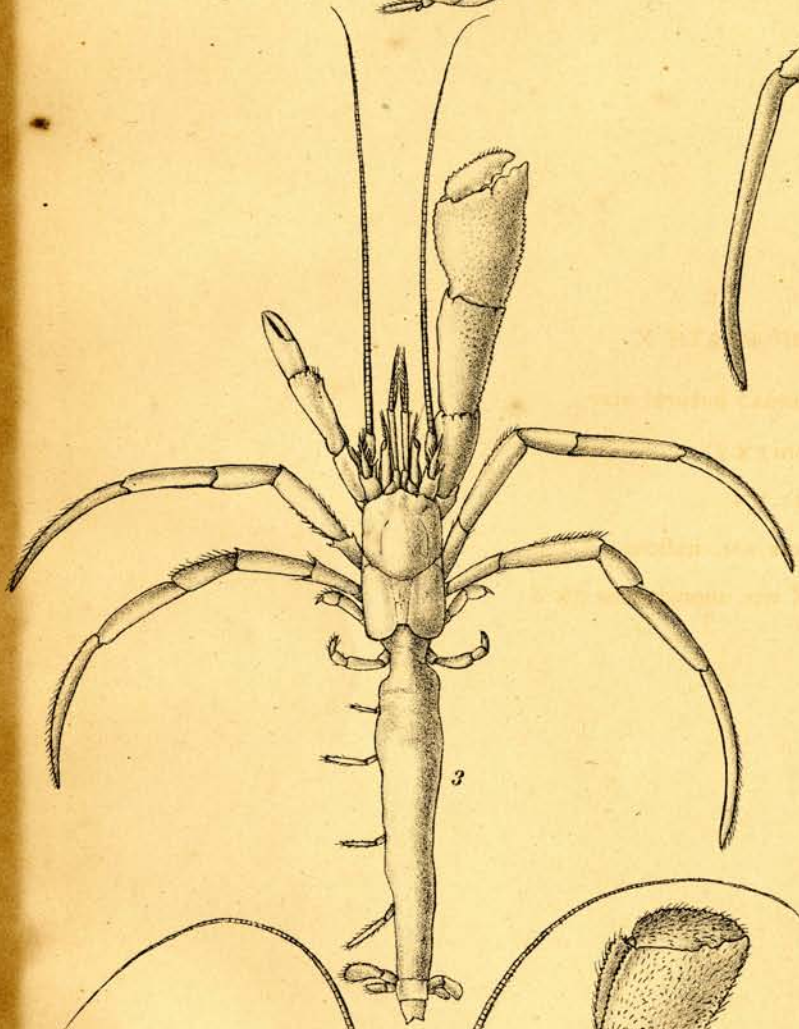
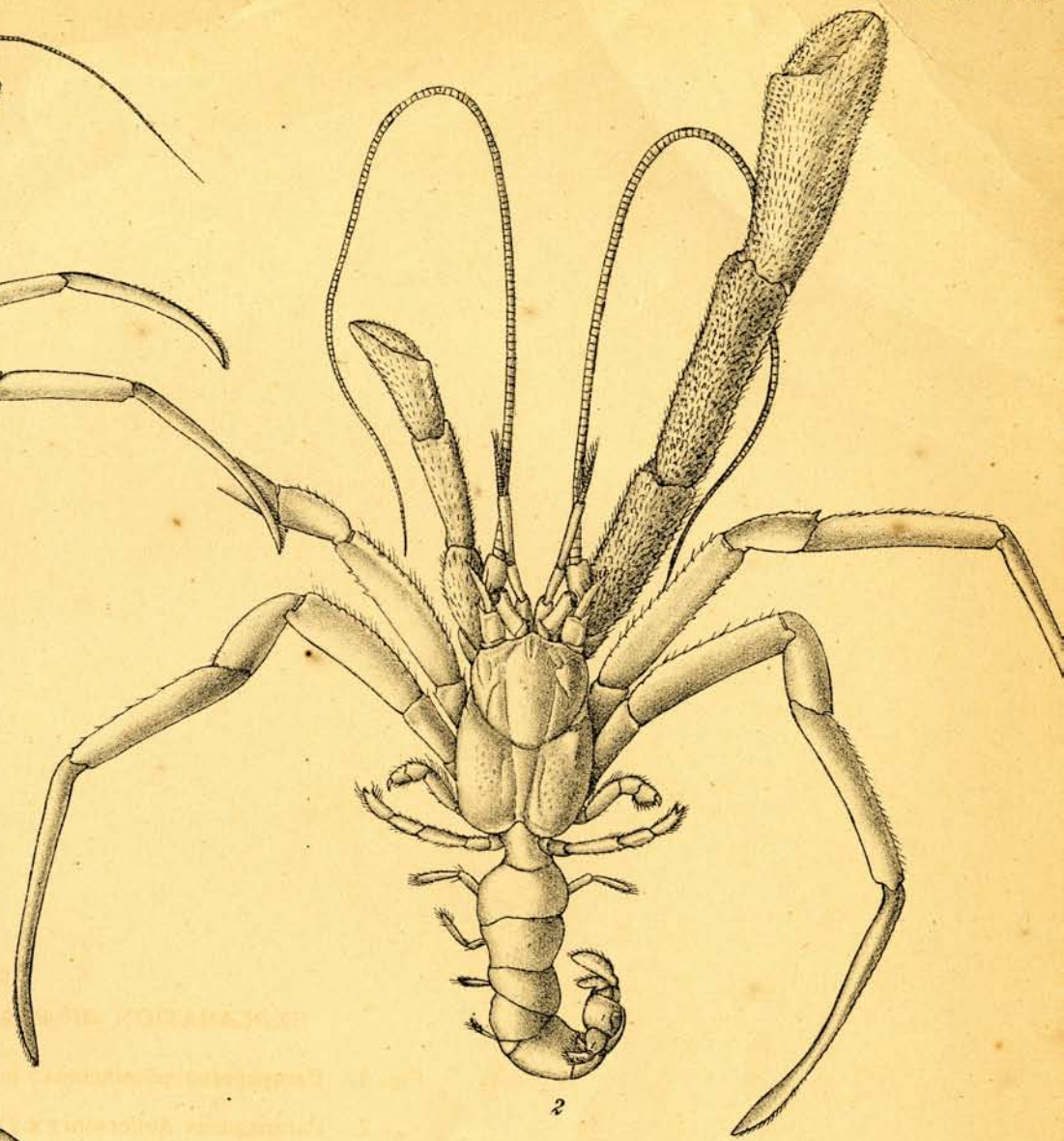
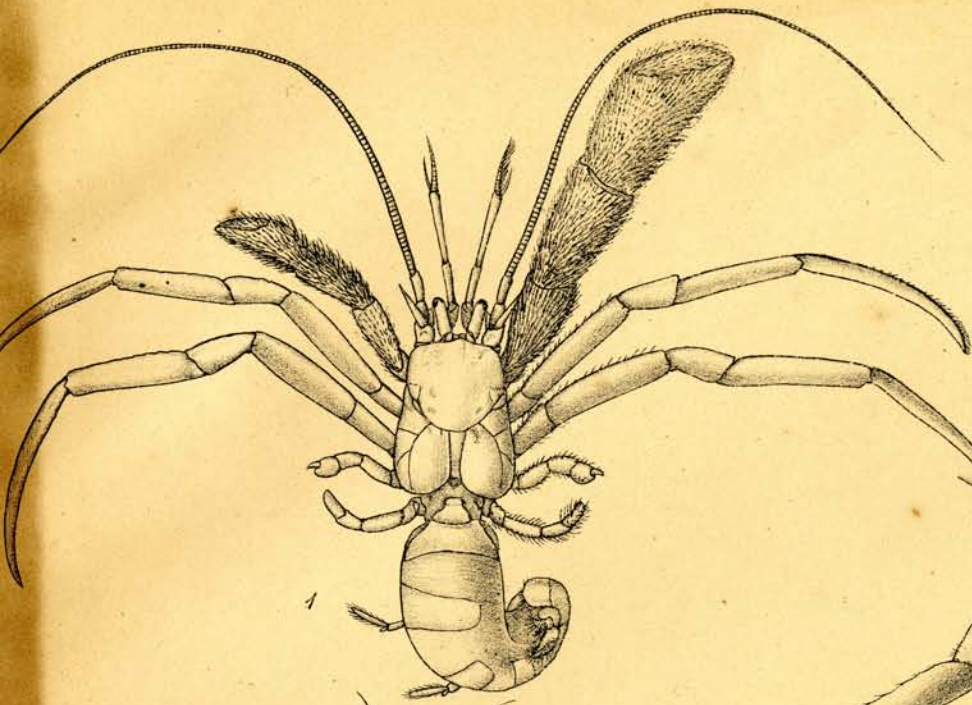
- Fig. 1. *Pagurus guttatus* : natural size.  
,, 2. *Pagurus euopsis* : natural size.  
,, 3. *Pagurus Wood-Masoni* : x  $1\frac{1}{2}$   
,, 4. *Pagurus deformis* : natural size.  
,, 5. *Pagurus asper* : x  $1\frac{1}{2}$   
,, 6. *Pagurus dearmatus* : x 2  
,, 7. *Pagurus varipes* : natural size.  
,, 8. *Pagurus imbricatus* : x 2



EXPLANATION OF PLATE X

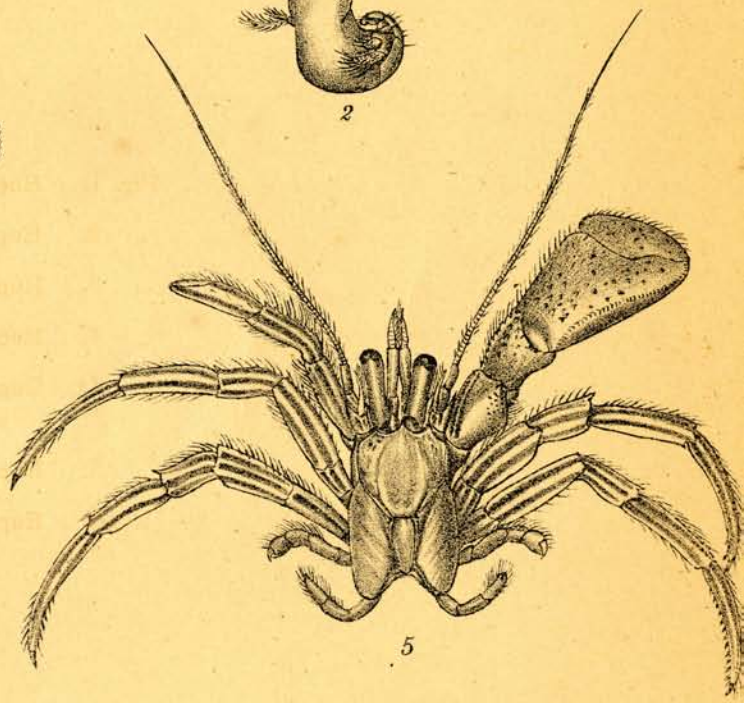
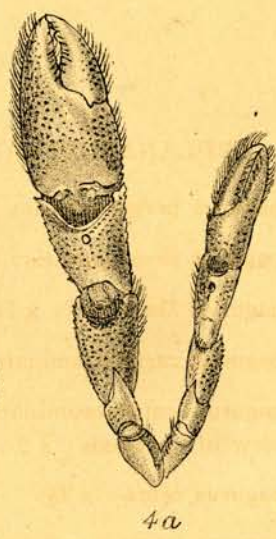
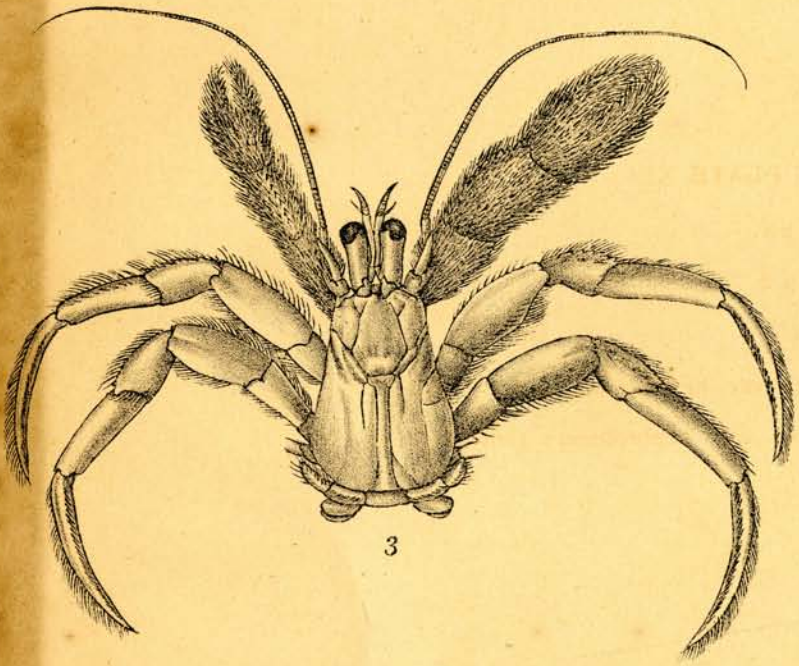
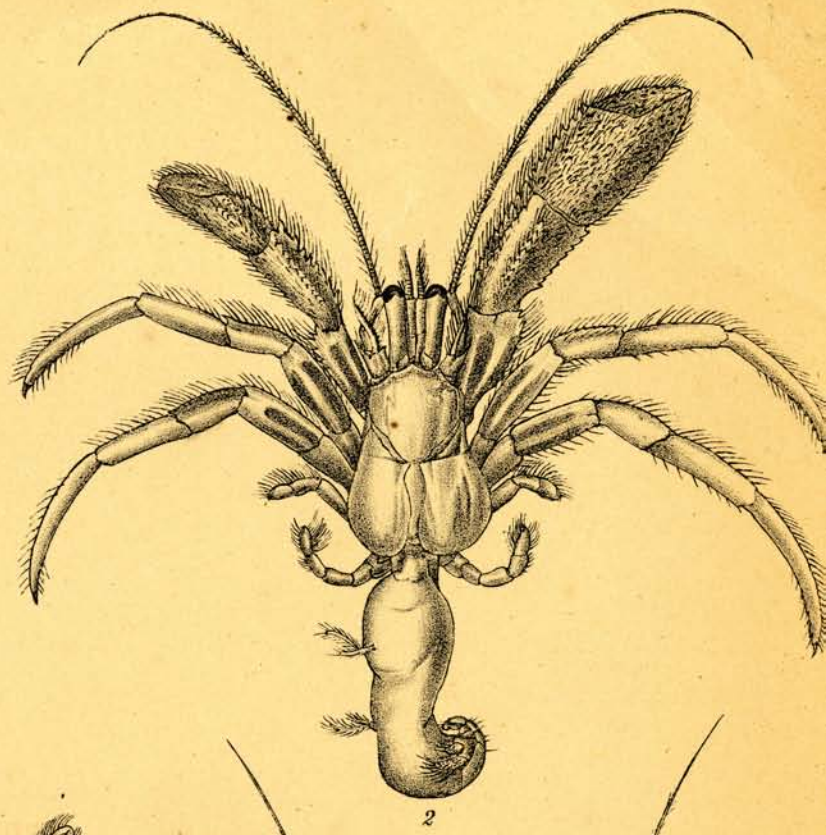
- Fig. 1. *Parapagurus pilosimanus*: natural size.  
„ 2. *Parapagurus Andersoni*: x 2  
„ 3. *Parapagurus minutus*: x 4  
„ 4. *Sympagurus bicristatus var. indicus*: x 3  
„ 5. *Sympagurus arcuatus var. monstrosus*: x 3





EXPLANATION OF PLATE XI

- Fig. 1. Eupagurus pergranulatus : x 3  
„ 2. Eupagurus investigatoris : x 2  
„ 3. Eupagurus Macardlei : x 1½  
„ 4. Eupagurus carpofoaminatus *var.* nephromma : x 2  
„ 4a. Eupagurus carpofoaminatus *var.* nephromma : ventral  
view of chelipeds : x 2  
„ 5. Eupagurus zebra : x 2½  
„ 6. Eupagurus janitor : x 2

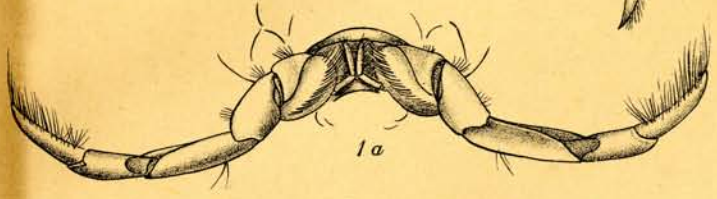


EXPLANATION OF PLATE XII

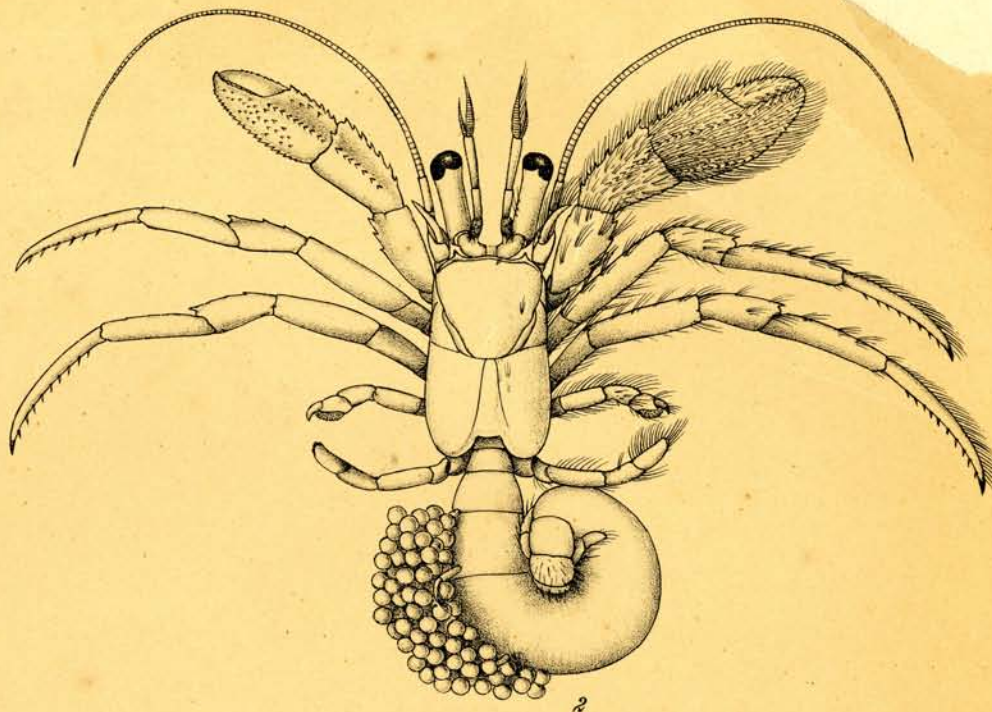
- Fig. 1. *Nematopagurus squamichelis* : x 1½
- „ 1a. *Nematopagurus squamichelis* : last pair of thoracic and first pair of abdominal appendages of female : x 4
- „ 2. *Nematopagurus Gardineri* : x 6
- „ 3. *Nematopagurus scutellichelis* : x 3
- „ 3a. *Nematopagurus scutellichelis* : last pair of thoracic legs of male : x 5
- „ 4. *Nematopagurus indicus* : x 2
- „ 5. *Nematopagurus muricatus* : x 5
- „ 5a. *Nematopagurus muricatus* : last pair of thoracic legs of male : x 5
- „ 6. *Pagurodes limatulus* : x 2½



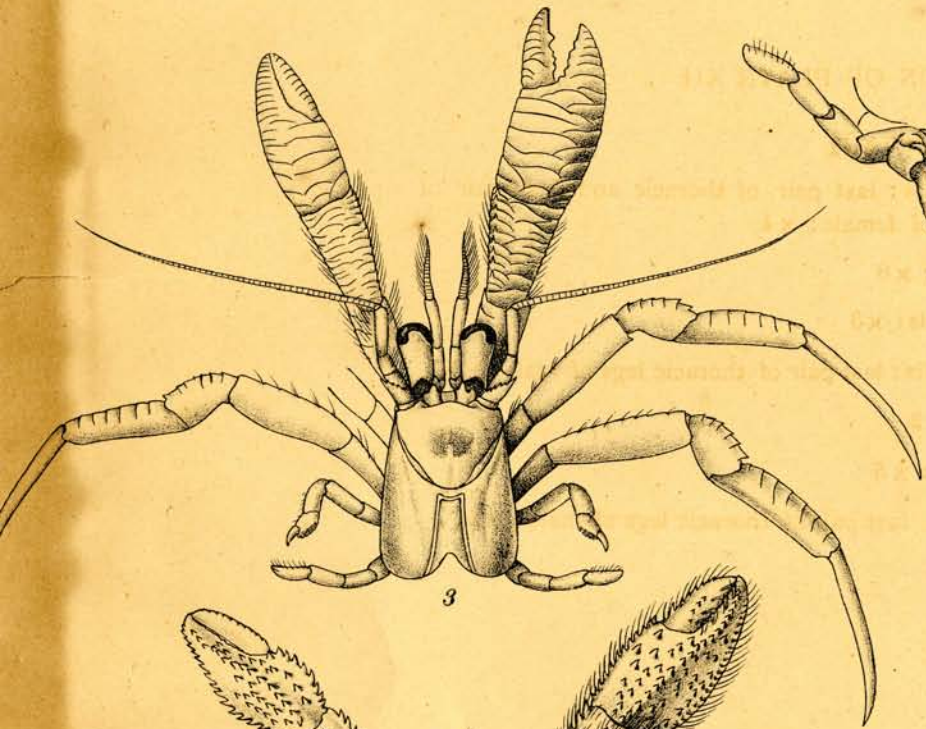
1



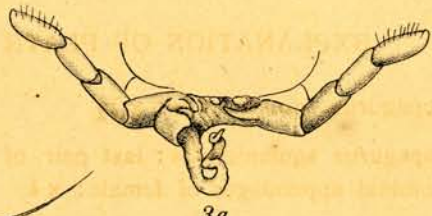
1a



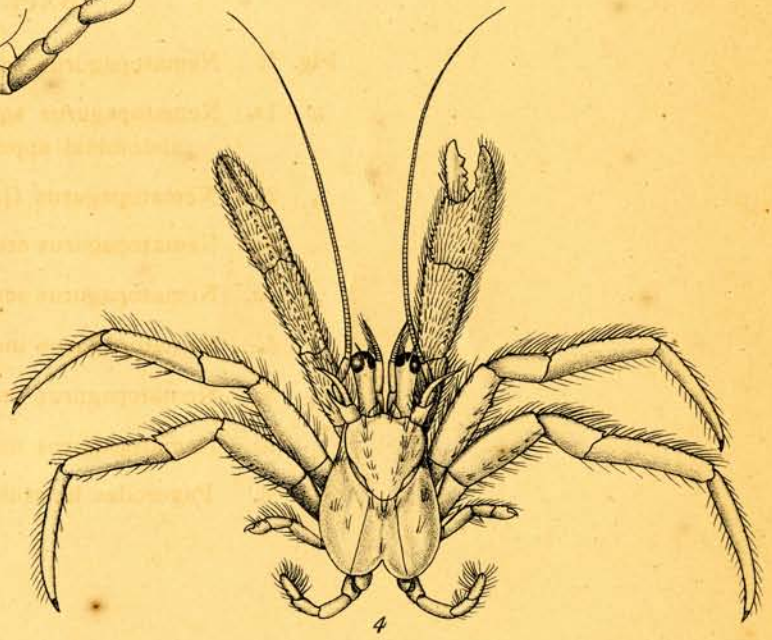
2



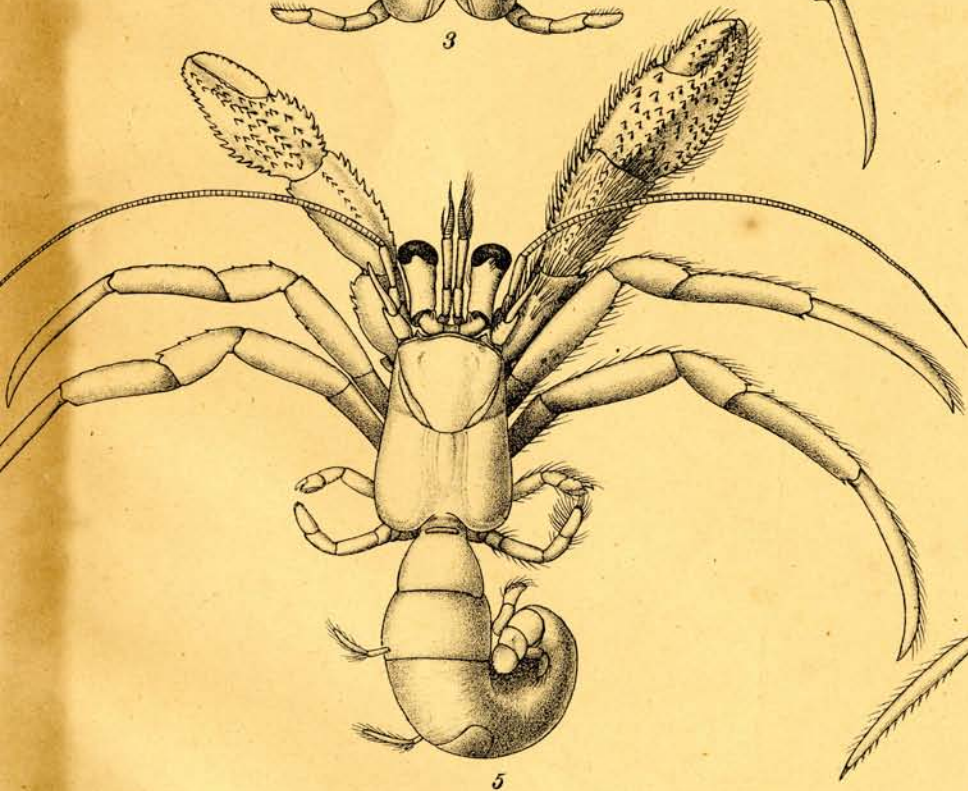
3



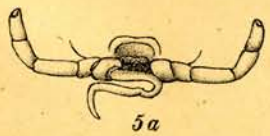
3a



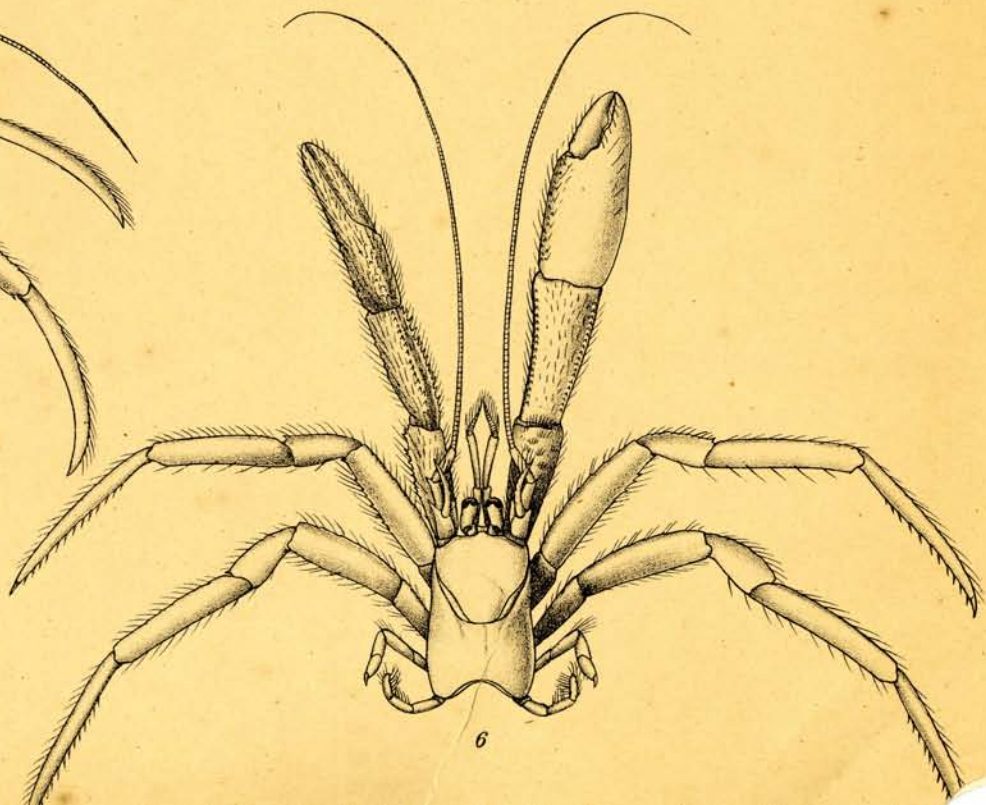
4



5



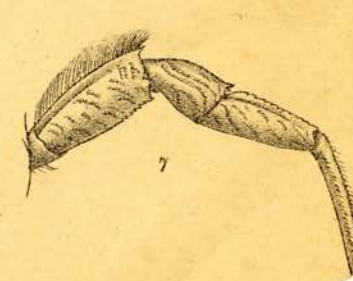
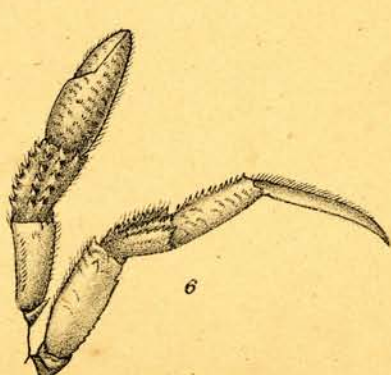
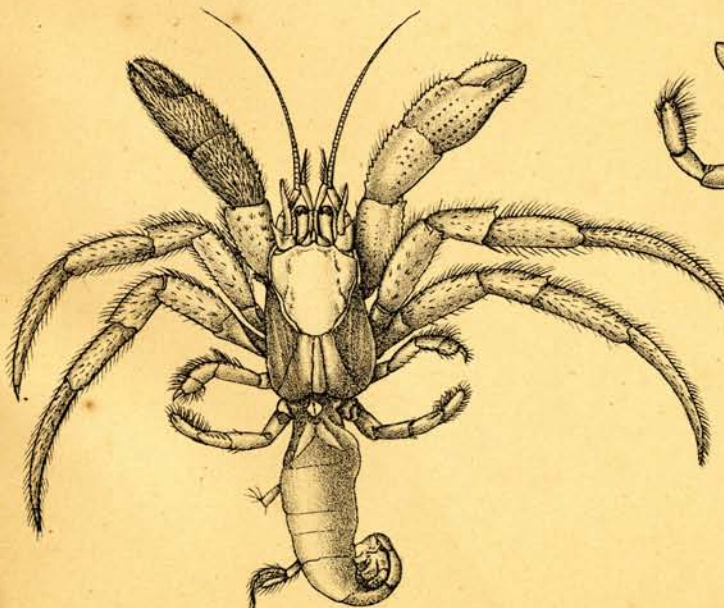
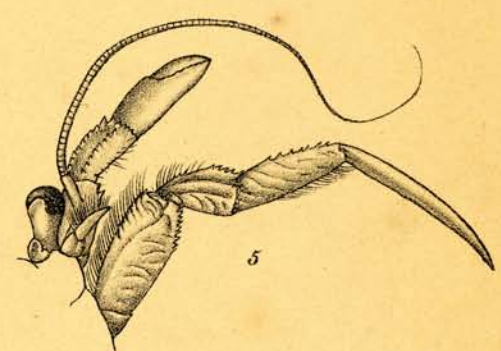
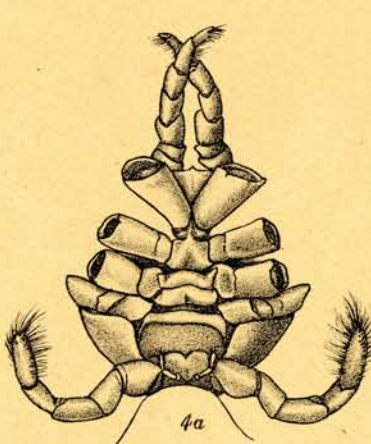
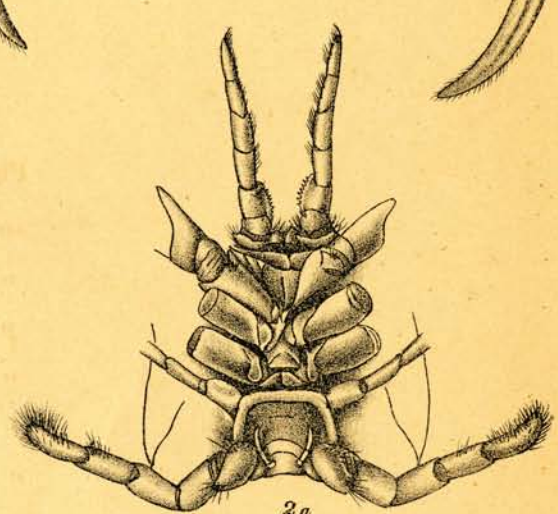
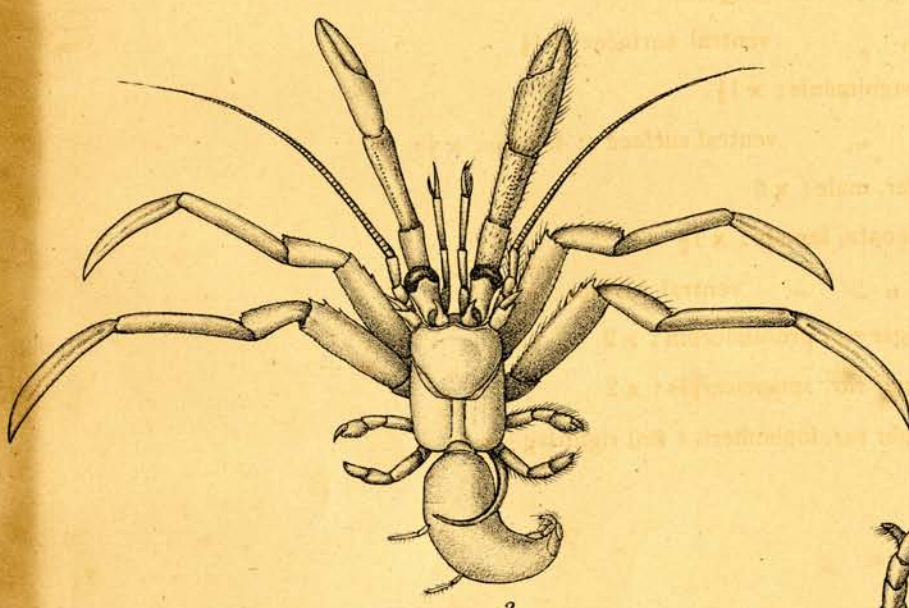
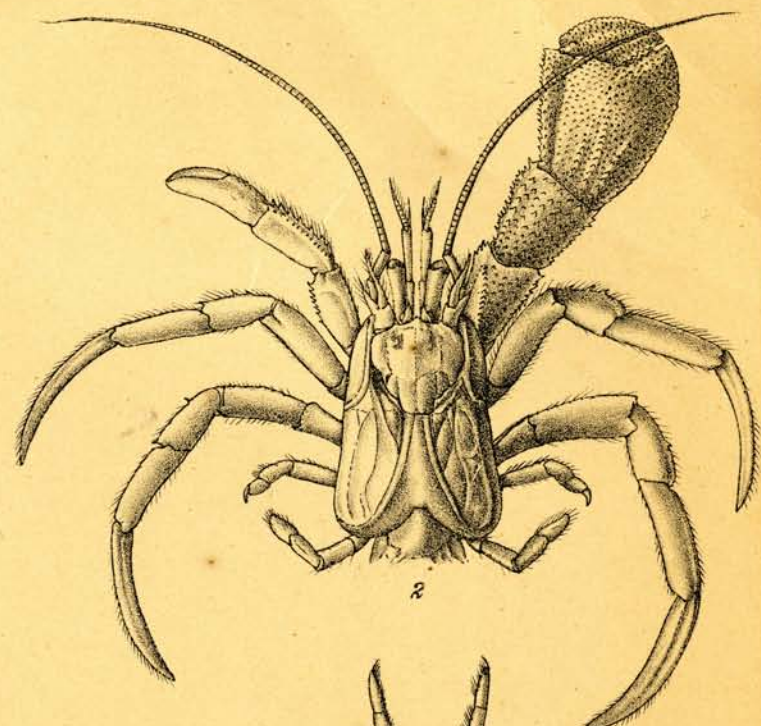
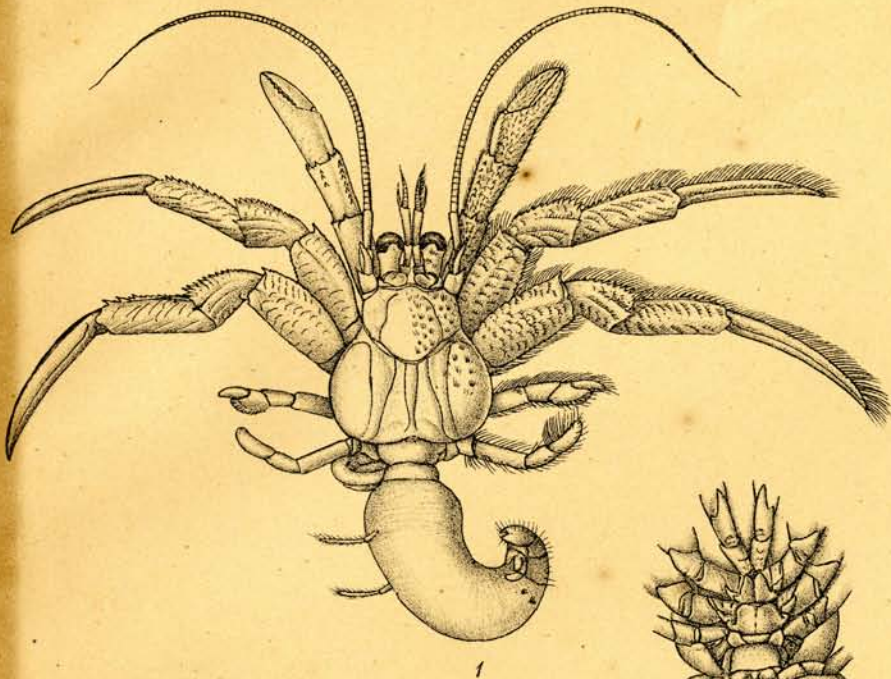
5a



6

EXPLANATION OF PLATE XIII

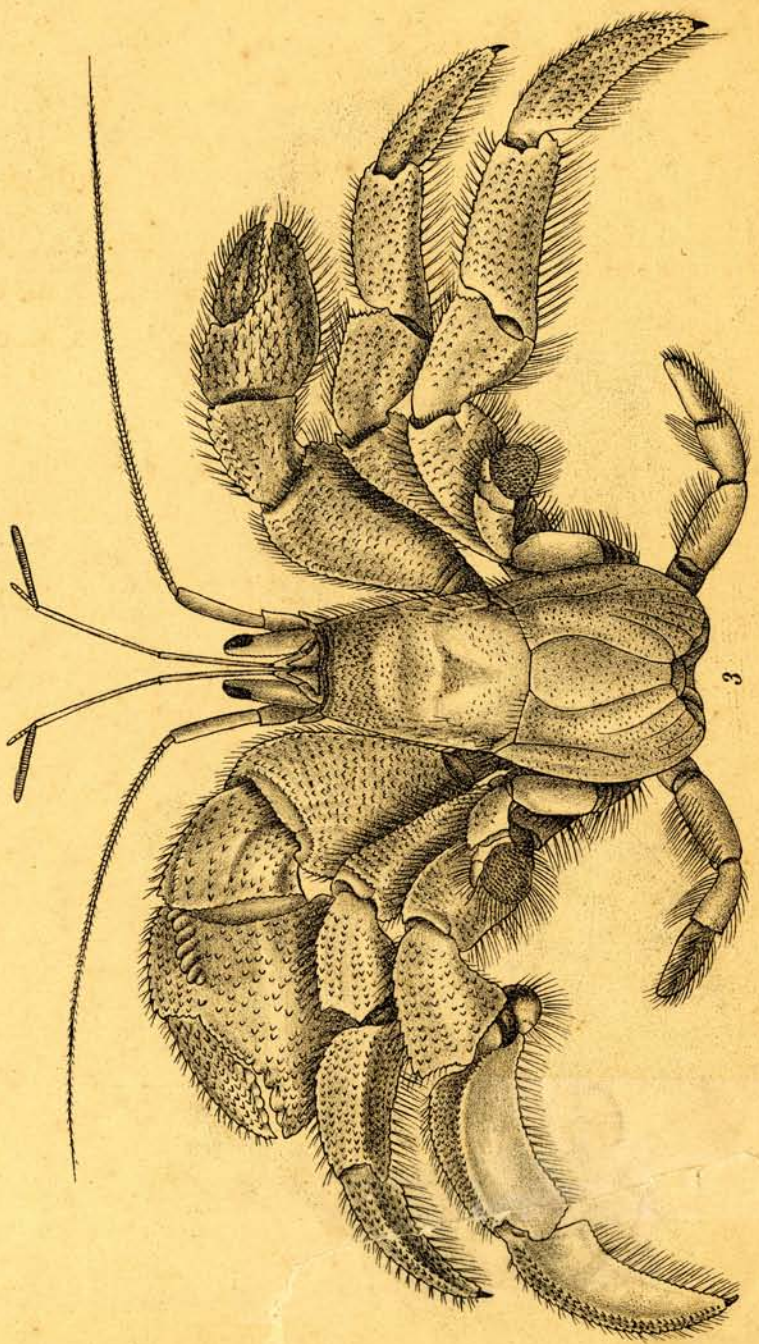
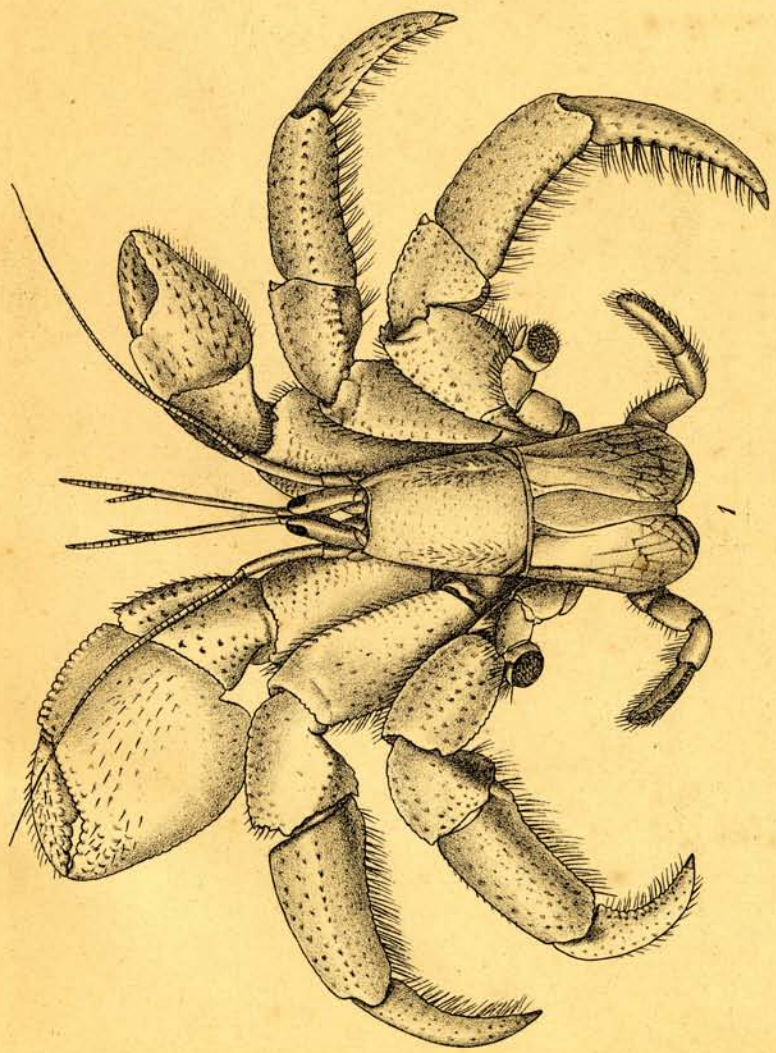
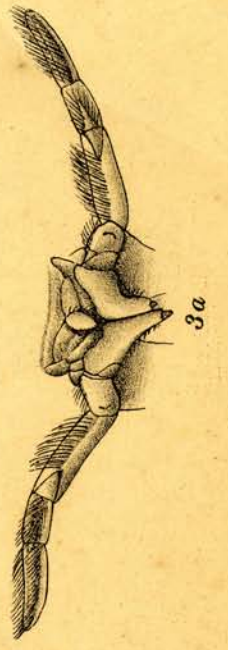
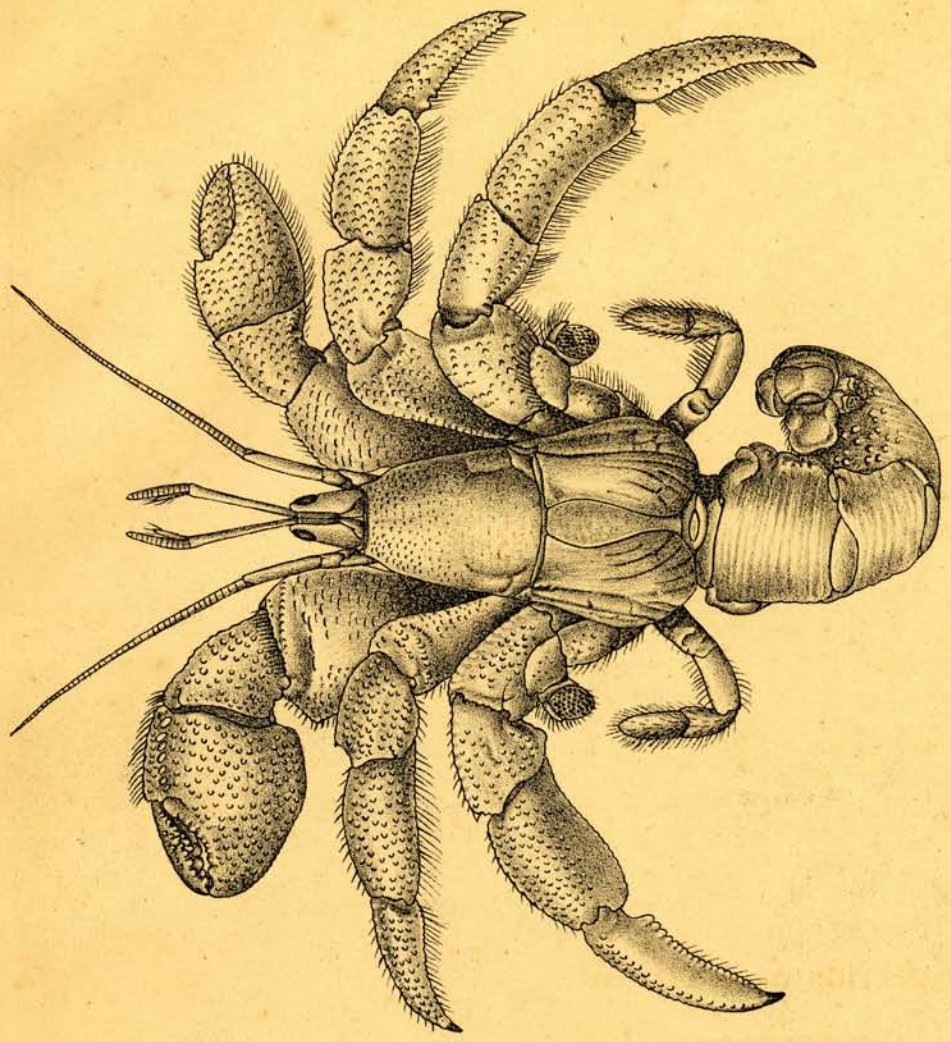
- Fig. 1. *Spiropagurus spiriger*, male : x 1½  
" 1a. " " ventral surface : x 1½  
" 2. *Pylopaguropsis magnimanis* : x 1½  
" 2a. " " ventral surface of female : x 4  
" 3. *Catapagurus ensifer*, male : x 5  
" 4. *Tomopaguropsis lanata*, female : x 1½  
" 4a. " " " ventral surface : x 4  
" 5. *Spiropagurus spiriger* *var.* *profundorum* : x 2  
" 6. *Spiropagurus spiriger* *var.* *spinosicarpis* : x 2  
" 7. *Spiropagurus spiriger* *var.* *lophomeris* : 3rd right leg : x 2



EXPLANATION OF PLATE XIV

- Fig. 1. *Coenobita cavipes* : x  $1\frac{1}{2}$   
,, 2, 2a. *Coenobita perlatus* : x  $1\frac{1}{2}$   
,, 3, 3a. *Coenobita rugosus* ; x 2





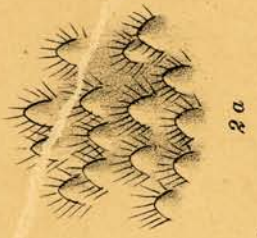
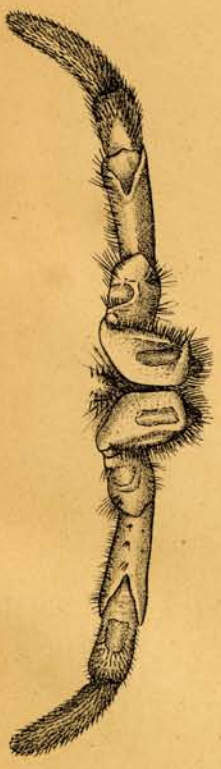
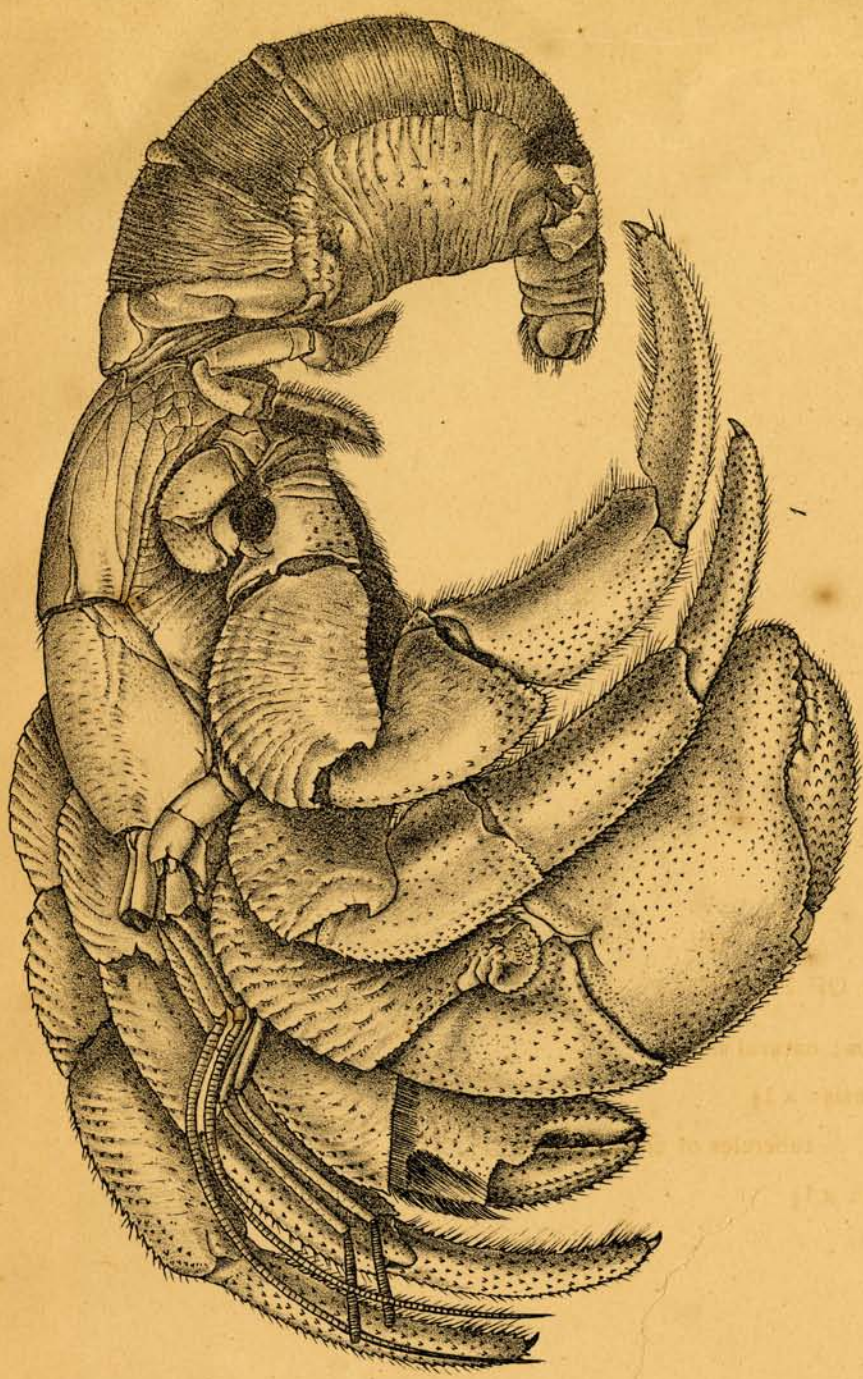
EXPLANATION OF PLATE XV

Fig. 1, 1a. *Coenobita clypeatus* : natural size.

„ 2. *Diogenes merguensis* : x  $1\frac{1}{2}$

„ 2a. „ „ tubercles of cheliped : x 6

„ 3. *Diogenes diogenes* : x  $1\frac{1}{2}$



EXPLANATION OF PLATE XVI

Fig. 1. *Birgus latro*, male; two-thirds natural size.

