

are perfectly smooth except for some vesiculous granules on the ventral surface of the ischium merus and carpus: in the male the palm is a little broadened and inflated, and in both sexes there is an enlarged bicuspid tooth at the basal end of the cutting edge of the dactylus.

The legs are about half the length of the chelipeds: they have a few scattered silky setæ of enormous length; their propodites are slightly expanded in their distal half, where the posterior border is serrated; their dactyli are strongly serrated along the posterior border.

The thoracic sternum has its edges deeply lobed in correspondence with the segments of which it consists: the segment corresponding with the external maxillipeds has a pair of median teeth, and that of the chelipeds has its anterior angles strongly spiniform.

Length of fully extended body of an adult male 30 millim., of chelipeds 70 millim.

Arabian Sea, off Cape Comorin, 459 fathoms: Bay of Bengal, off Ceylon, 805 fathoms.

Regd. Nos. $\frac{9328}{9}$: $\frac{1356}{10}$: $\frac{1362}{10}$: $\frac{3759}{10}$: $\frac{3760}{10}$.

52. *Uroptychus bacillimanus*, Alcock & Anderson.

Uroptychus bacillimanus, Alcock and Anderson, Ann. Mag. Nat. Hist., Jan. 1899, p. 25.

ILLUSTRATIONS OF THE ZOOLOGY OF THE INVESTIGATOR, CRUSTACEA, PLATE XLV. FIG. 3.

Nearest to *U. gracilimanus*, Henderson, from which it seems to differ only in having the carapace pitted and the posterior border of the propodites of the legs unarmed, and to the Atlantic *U. rubrovittatus*, A. M.-Edw., from which it differs in having slender chelipeds and also the posterior border of the propodites of the legs unarmed.

Carapace unarmed, except for a tiny spinule at either antero-lateral angle and another even smaller at the outer angle of either orbital notch; its surface covered with a fine squamiform pitting, its lateral borders with a regular squamiform crenulation.

Rostrum triangular, simple, acute, more than a third of its length projecting beyond the eyes.

Abdomen smooth; the third to sixth pleura rounded.

Eyes small, their major diameter less than a fifth the length of the rostrum, brown in colour.

Antennal acicle acutely triangular, reaching about two-thirds the distance along the terminal joint of the antennal peduncle.

Chelipeds in both sexes about twice the length of the fully extended body, very slender in the male, still more slender in the female, perfectly smooth, but

bearing (as do also the legs) some curiously long and delicate silky hairs; the hand is longer and slightly broader than the wrist, the fingers are considerably less than half the length of the palm.

Legs slender, less than half the length of the chelipeds; a few spinules on the posterior border of the dactyli, but only a single one (situated terminally) on the posterior border of the propodites.

A young male and female from off the Travancore coast, 430 fathoms, and an egg-laden female from off Ceylon, 820-296 fathoms.

Length of fully extended body of female 29 millim., of chelipeds 54 millim.

Regd. Nos. $\frac{2349-2350}{10}$ (Types of the species): $\frac{768}{10}$.

INDEX.

	<i>Page.</i>		<i>Page.</i>
Acanthephyra	75	Bathyan kyristes	249
" armata	78	" levis	274
" cristata	82	" tenax	273
" curtirostris	81	Benthesicymus	42
" eximia	76	" Bartletti	45
" " var. brachytelsonis	78	" investigatoris	44
" microphthalmus	80	Brachycarpus	137
" sanguinea	79	" laccadivensis	138
Aegeon	117	Calastacus	191
" affine	118	" felix	192
" andamanese	121	" investigatoris	191
" bengalense	122	Callianassa	197
" medium	120	" cæcigena	198
ALPHEIDÆ	139	" lignicola	200
Alpheus	139	CALLIANASSIDÆ	197
" macroscelus	140	Calocaris	187
" Shearmeri	141	" alcocki	190
ANOMALA	206	" felix	192
Arctus	180	" investigatoris	191
" orientalis	181	" macandreae	189
" rubens	182	CARIDÆA	54
ARISTEINÆ	12	Chlænopagurus	228
Aristæomorpha	38	" Andersoni	229
" rostridentatus	39	Chlorotocus	100
Aristæopsis	40	" gracilipes var. andamanensis	101
" armatus	41	CRANGONIDÆ	114
Aristæus	27	CRANGONOIDA	56
" armatus	41	Dorodotes	109
" Carpenteri	32	" reflexus	109
" coruscans	37	Elasmonotus	249
" crassipes	33	" cylindrophthalmus	272
" Edwardsianus	36	Engystenopus	143
" rostridentatus	39	" palmipes	144
" semidentatus	31	Ephyrina	83
" tener	42	" Hoskynii	84
" virilis	30	Eryonicus	176
ASTACIDÆA	150	" indicus	176
AXIIDÆ	187	ERYONIDÆ	164

	<i>Page.</i>		<i>Page.</i>
ERYONIDEA	151	HOPLOPHOROIDA	55
Galacantha	274	Hoplophorus	72
" rostrata	275	" gracilirostris	73
" " var. investigatoris ...	276	Iconaxiopsis	193
" spinosa " trachynotus ...	277	" andamanensis	196
GALATHEIDÆ	236	" laccadivensis	195
GALATHEIDEA	235	LITHODEA	231
Galathodes	249	Lithodes	232
" posidonia	263	" Agassizii	232
" regia	261	LORICATA	151
" trachypus	262	MACRURA	8
" triæna	261	" ASTACIDES	149
" ? tridentata	264	" CARIDIDES	9
" trifida	260	Metapeneus	14
Gebicula	201	" couiger	16
" exigua	202	" " var. andamanensis ...	17
Gennadas	45	Munida	237
" carinatus	46	" andamanica	242
" parvus	46	" comorina	239
Glyphocrangon	125	" microps	240
" cæca	135	" " var. lasiocheles	241
" cæcescens	133	" squamosa var. prolixa ...	244
" cerea	136	" tricarinata	246
" Gilesii	132	" vigiliarum	243
" hastacauda	131	Munidopsis	247
" investigatoris	127	" arietina	269
" priononota	129	" centrina	270
" Smithii	129	" ceratophthalmus	271
" unguiculata	130	" ciliata	267
GLYPHOCRANGONIDÆ	124	" cylindrophthalmus	272
Haliporus	22	" dasypus	252
" æqualis	23	" Edwardsii	265
" microps	25	" Goodridgii	258
" neptunus	24	" granosa	266
" taprobanensis	25	" Hemingi	251
" villosus	26	" iris	255
Hemipeneus	31	" levis	274
" Carpenteri	32	" Moresbyi	259
" crassipes	33	" posidonia	263
Hepomadus	42	" regia	261
" tener	42	" scobina	254
Heterocarpus	102	" subsquamosa var. pallida ...	268
" alphonsi	106	" stylirostris	256
" ensifer	107	" tenax	273
" gibbosus	103	" trachypus	262
" lævigatus	105	" triæna	261
" tricarinatus	107	" ? tridentata	264
" Wood-Masoni	108	" trifida	260
HOPLOPHORIDÆ	72	" unguifera	253

	<i>Page.</i>		<i>Page.</i>
Munidopsis Wardeni ...	257	Panulirus ...	184
NEMATOCARCINIDÆ ...	85	" angulatus ...	185
Nematocarcinus ...	86	Paralomis ...	232
" cursor ...	89	" indica ...	234
" " var. paucidentatus ...	90	" investigatoris ...	233
" gracilis ...	90	Parapagurus ...	216
" tenuipes ...	87	" Andersoni ...	220
" tenuirostris ...	88	" " var. brevimanus ...	221
Nephrops ...	153	" minutus ...	222
" thomsoni var. andamanica ...	153	" pilosimanus ...	218
NEPHROPSIDÆ ...	151	Parapandalus ...	99
NEPHROPSIDEA ...	150	" spinipes ...	100
Nephropsis ...	157	Parapasiphæa ...	64
" atlantica ...	161	" Gilesii ...	66
" Carpenteri ...	160	" latirostris ...	65
" ensirostris ...	162	Parapeneopsis ...	14
" Stewarti ...	159	Parapeneus ...	14
" Suhmi ...	163	" investigatoris ...	18
Orophorhynchus ...	249	" rectacutus ...	17
" arietina ...	269	Parapontocaris ...	120
" centrina ...	270	" andamanense ...	121
" ceratophthalmus ...	271	" bengalense ...	122
" ciliata ...	267	Parapylocheles ...	213
" Edwardsii ...	265	" scorpio ...	214
" granosa ...	266	Parasolenocera ...	21
" subsquamosa var. pallida ...	268	" annectens ...	21
PAGURIDÆ ...	215	Pasiphæa ...	58
PAGURIDEA ...	208	" alcocki ...	61
Paguristes ...	225	" sivado... ...	59
" puniceus ...	226	" unispinosa ...	60
PAGURODEA ...	209	PASIPHÆIDÆ ...	57
Pagurodes ...	224	PASIPHÆOIDA ...	55
" sp. ? inarmatus ...	225	PENEIDÆ ...	11
" " ? limatulus ...	225	PENEIDEA ...	10
Palæmon laccadivensis ...	138	PENEINÆ ...	11
PALEMONIDÆ ...	137	Peneus ...	13
PALEMONOIDA ...	56	" coniger ...	16
PALINURIDÆ ...	183	" " var. andamanensis ...	17
PANDALIDÆ ...	91	" investigatoris ...	18
PANDALOIDA ...	55	" rectacutus ...	17
Pandalopsis ...	93	Pentacheles ...	171
Pandalus ...	92	" Beaumontii ...	175
" alcocki ...	97	" Carpenteri ...	174
" bifurca ...	98	" gibbus ...	173
" ensis ...	96	" Hextii ...	172
" martius ...	95	Phoberus ...	155
" ocellus ...	98	" cæcus var. tenuimanus ...	156
" spinipes ...	100	Phye ...	61
" unidens ...	97	" alcocki ...	61

	<i>Page.</i>		<i>Page.</i>
Plastocrangon 133	Ptychogaster investigatoris 281
" cæca 135	Pylocheles 210
" cæcescens 133	" Miersii 212
" cerea 136	PYLOCHELIDÆ 209
Plesionika 94	Richardina 146
" alcocki 97	" spongicola 146
" bifurca 98	SCYLLARIDÆ 179
" ensis 96	Sergestes 48
" martius 95	" bisulcatus 49
" ocellus 98	" hamifer 53
" unidens 97	" inous 50
Plesiopeneus 35	" rubroguttatus 51
" coruscans 37	SERGESTIDÆ 47
" Edwardsianus 36	SICYONINÆ 12
Polycheles 166	Solenocera 19
" andamanensis 169	" annectens 21
" ceratus 170	" Hextii 20
" phosphorus 168	Spongicola 148
" sculptus 170	" andamanica 148
Pontophilus 115	STENOPIDÆ 143
" abyssi 116	STENOPIDEA 142
" gracilis 115	Sympagurus 223
Prionocrangon 123	" monstrosus 223
" ommatosteres 123	Sympasiphæa 62
PSALIDOPODIDÆ 110	" annectens 63
PSALIDOPODOIDA 56	THALASSINIDEA 150
Psalidopus 111	Trachypeneus 15
" Huxleyi 112	UROPTYCHIDÆ 278
" spiniventris 113	Uroptychus 281
Psathyrocaris 67	" australis var. indicus 284
" fragilis 69	" bacillimanus 285
" infirmis 71	" fusimanus 283
" platyophthalmus 70	" nigricapillis 283
" plumosa 70	Willemoesia 178
Ptychogaster 279	" indica 178
" Hendersoni 280	Xiphopeneus 15

EXPLANATION OF PLATES.

PLATE I.

Figs. 1, 1a. *Willemoesia indica*, natural size.

Figs. 2, 2a. *Nephropsis ensirostris*, $\times 1\frac{1}{2}$.

PLATE II.

Fig. 1. *Iconaxiopsis andamanensis*, $\times 2$.

Fig. 1a. Part of the antenna of *Iconaxiopsis andamanensis*, $\times 4$.

Fig. 2. *Spongicola andamanica*, $\times 6$.

Fig. 3. *Engystenopus palmipes*, $\times 2$.

Fig. 4. *Gebicula exigua*, $\times 6$.

PLATE III.

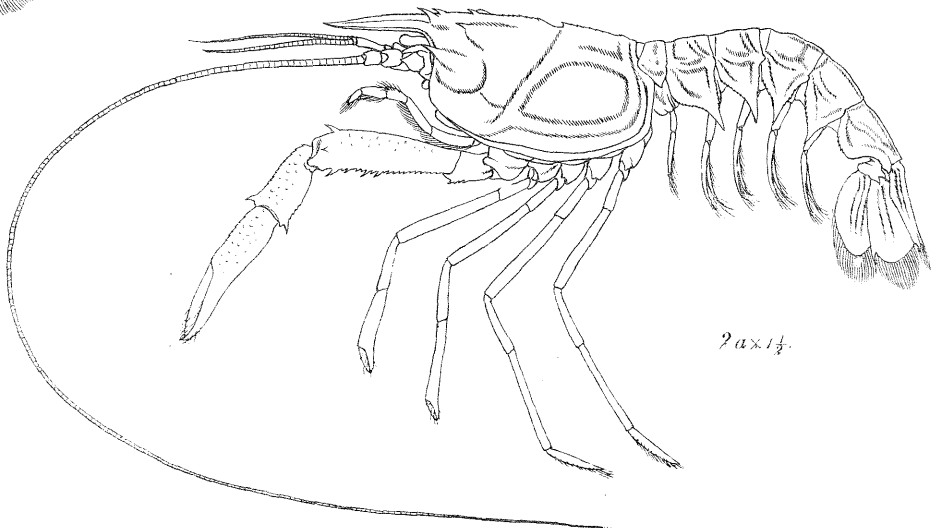
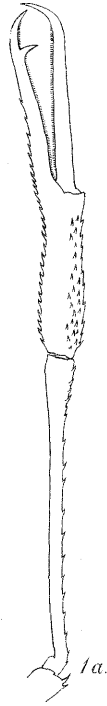
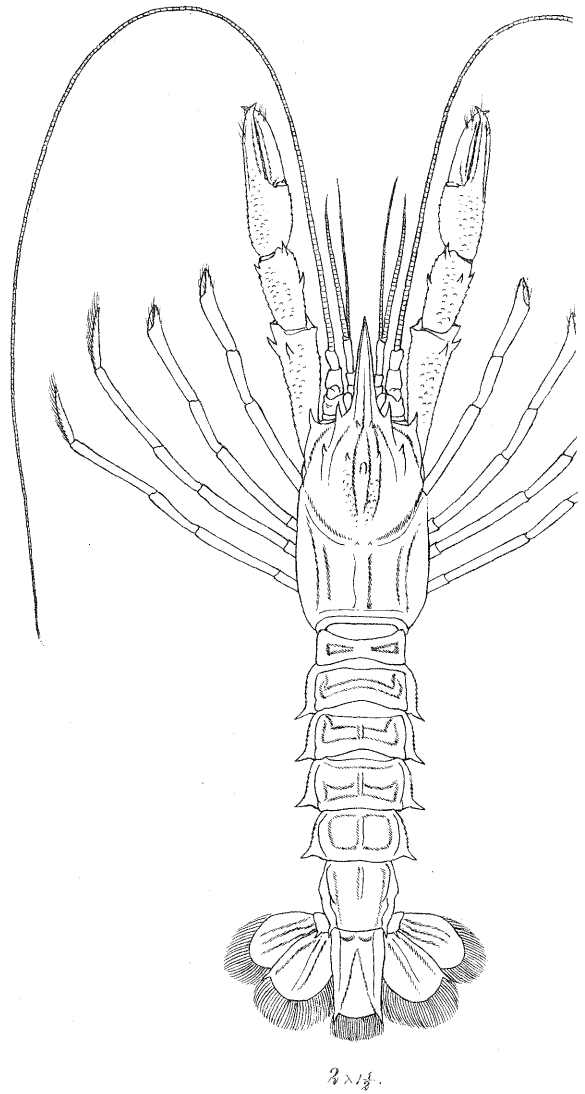
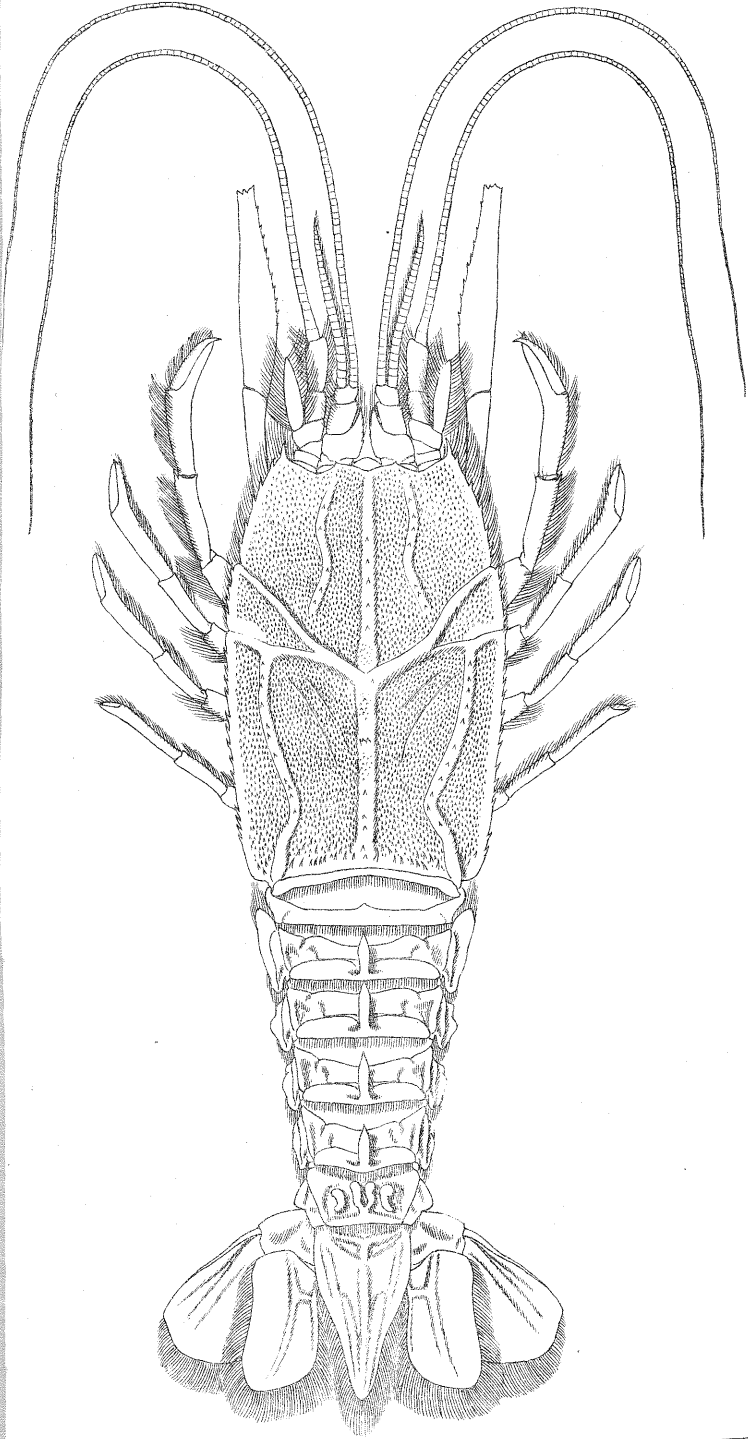
Fig. 1. *Munidopsis (Orophorhynchus) granosa*, $\times 2$.

Fig. 2. *Munidopsis (Orophorhynchus) ceratophthalmus*, $\times 1\frac{1}{2}$.

Fig. 3. Carapace etc. of *Uroptychus nigricapillis*, $\times 6$.

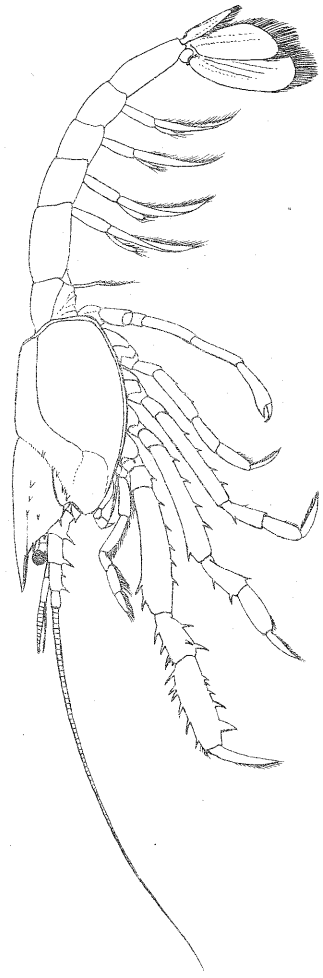
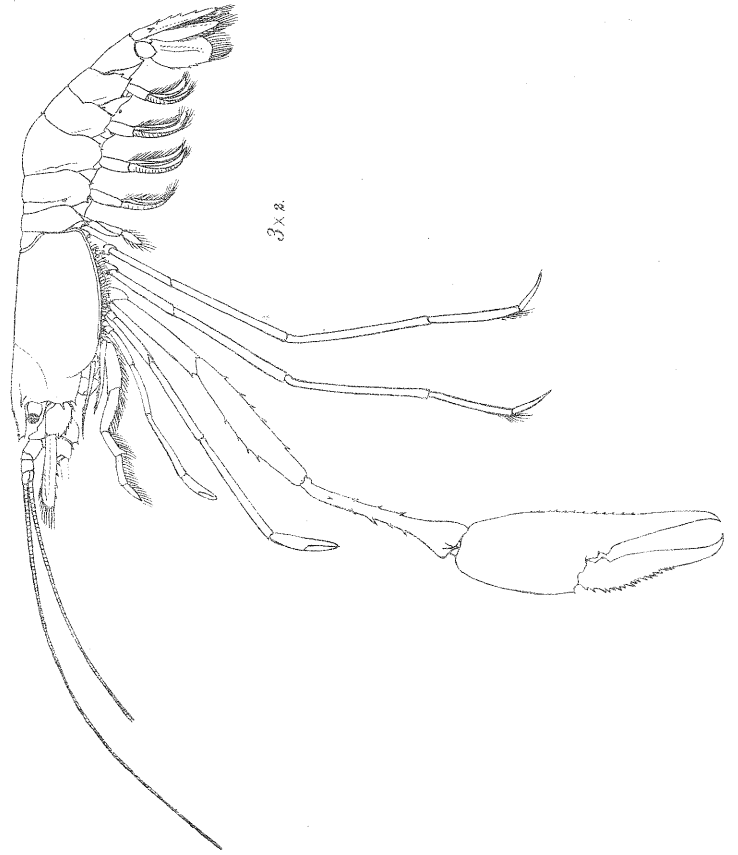
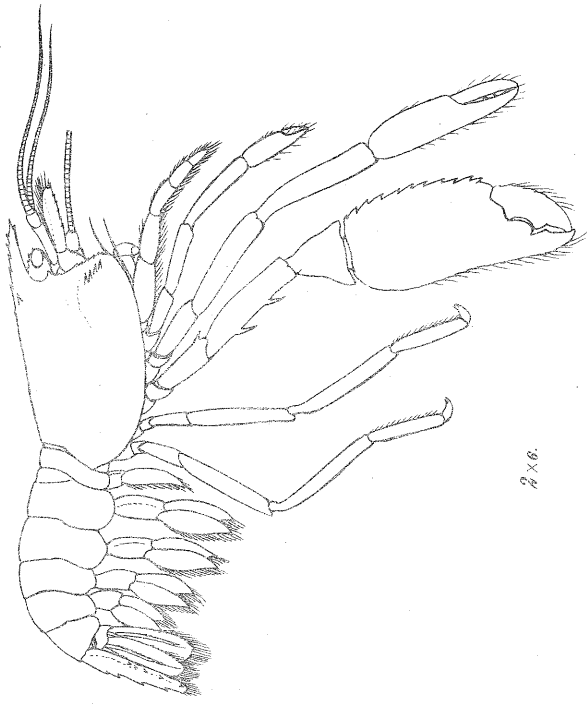
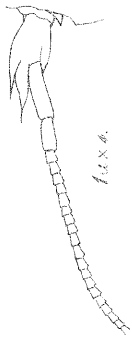
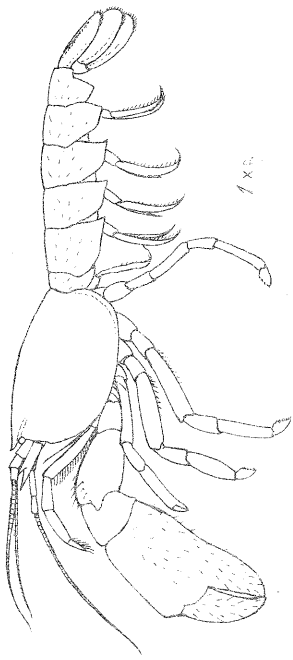
Fig. 3a. Hand of *Uroptychus nigricapillis*, $\times 3$.

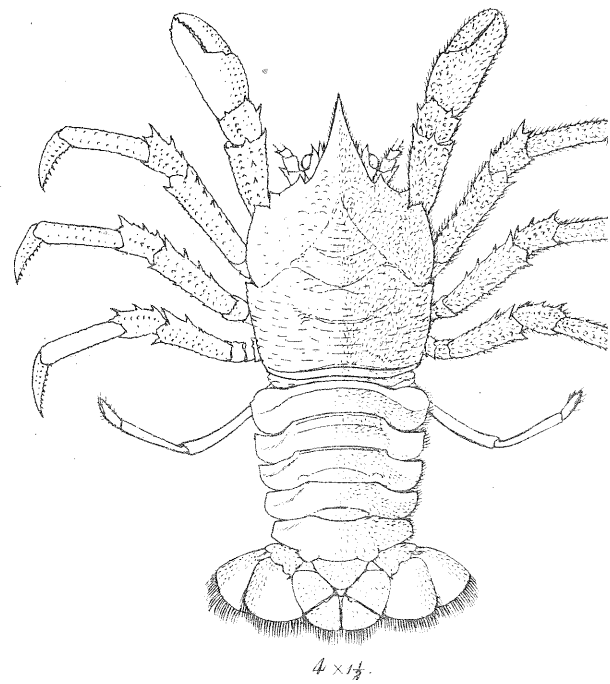
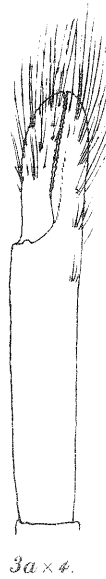
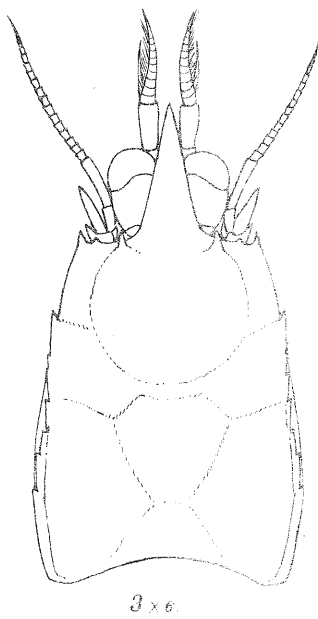
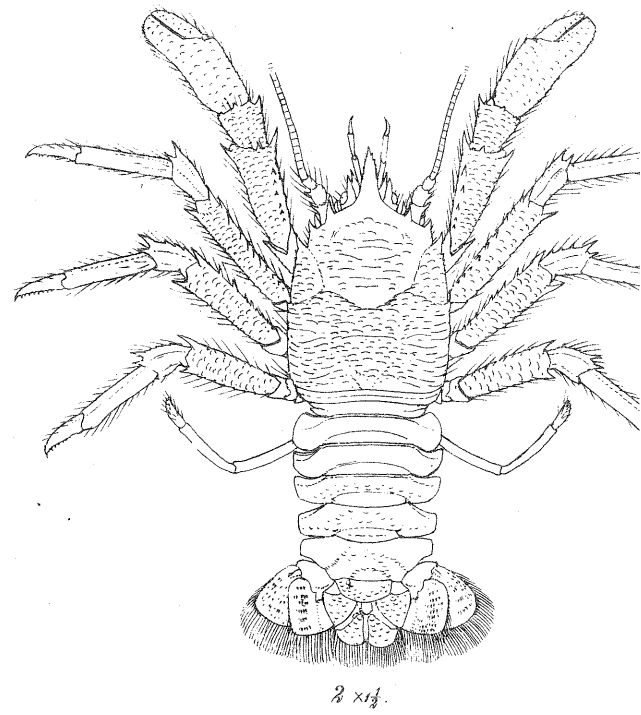
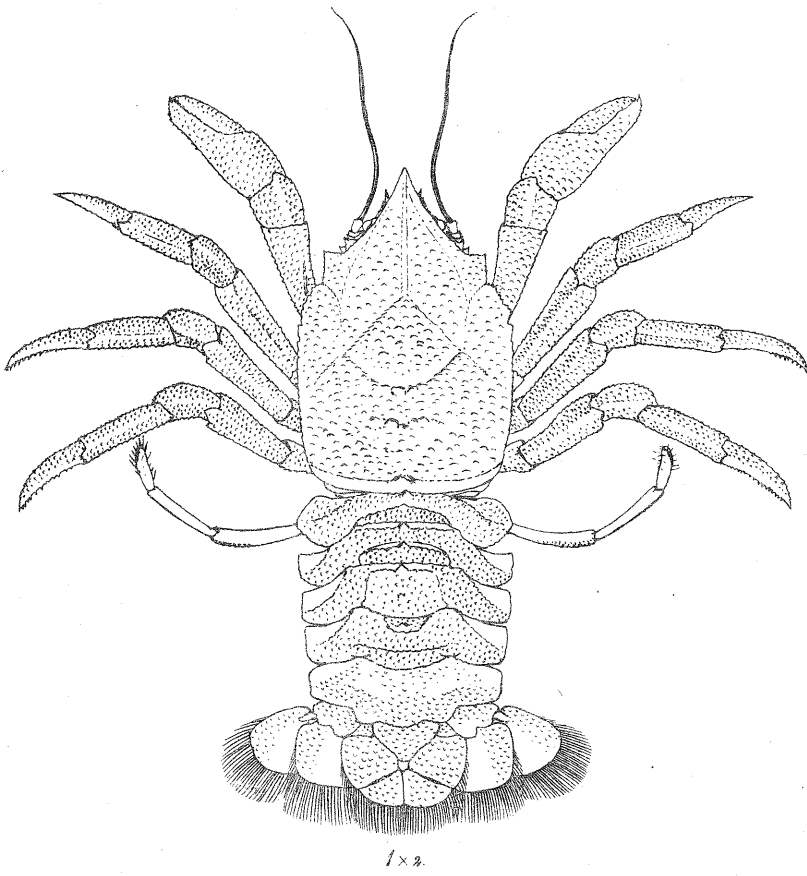
Fig. 4. *Munidopsis (Orophorhynchus) Edwardsi*, $\times 1\frac{1}{2}$.



1 1 a. Willemoesia indica ♂.

2 2 a. Nephropsis caudostris ♀.





1. *Munidopsis granosa*.
 3. *Urontychus nigricanillis*

2. *Munidopsis ceratophthalmus*.
 4. *Munidopsis edwardsii*