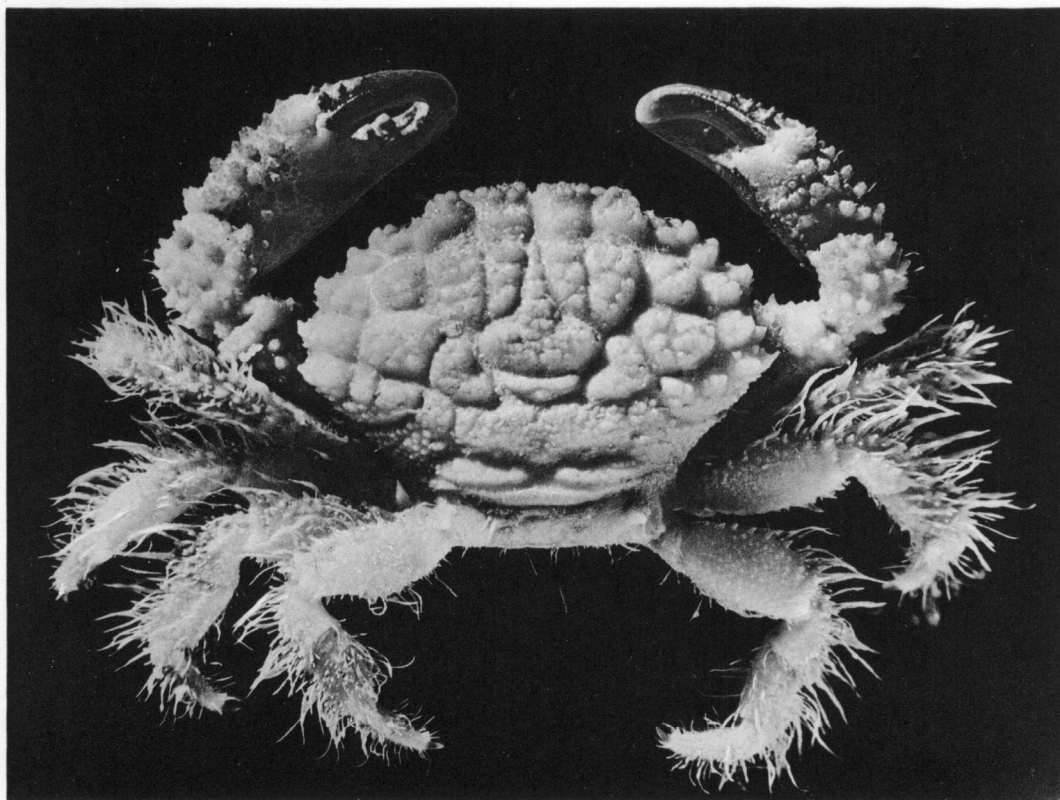


1

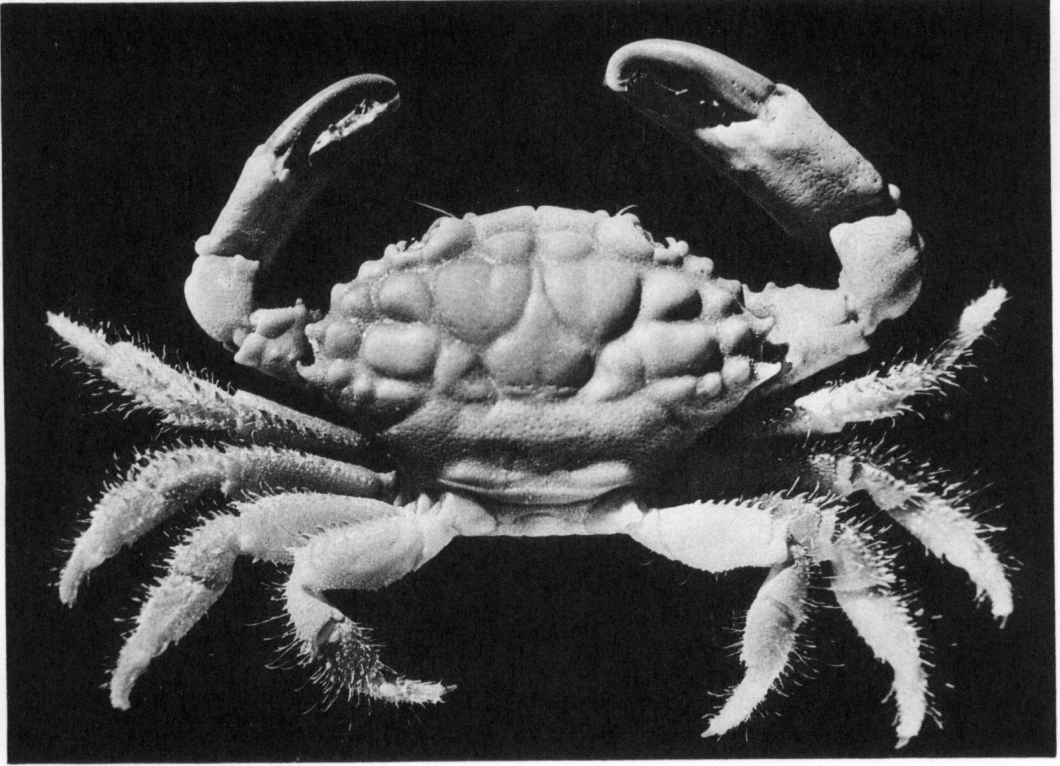


2

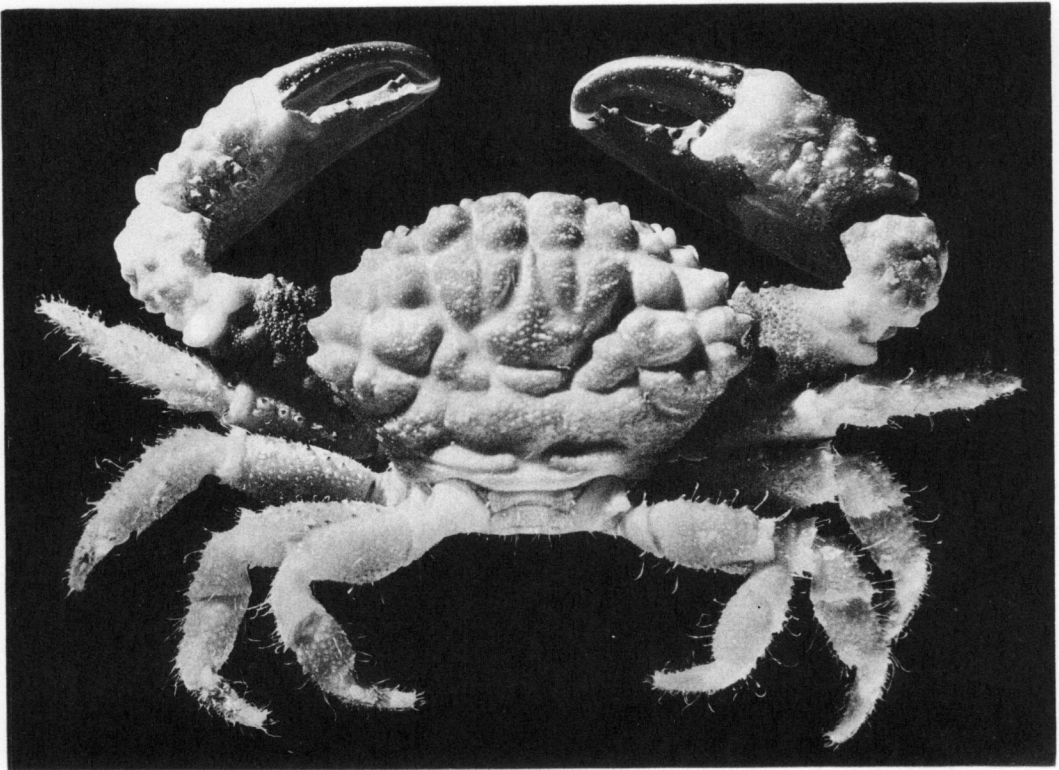
PLANCHE VIII

FIG. 1. — *Phymodius nitidus* (Dana), ♂ 13,6 × 21,5 mm, Abulat, Calypso coll. 1952.

FIG. 2. — *Phymodius ungulatus* (H. Milne Edwards), ♂ 13,5 × 20 mm, Ile Maurice, CARIÉ coll., BOUVIER det.



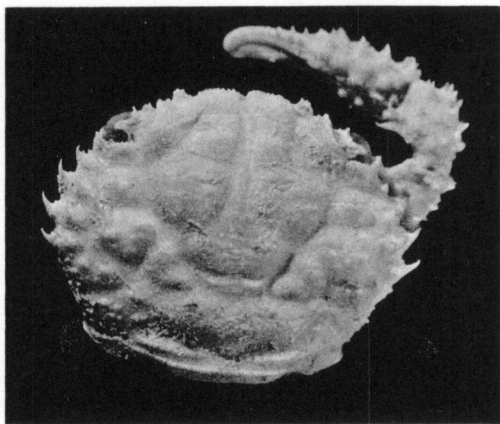
1



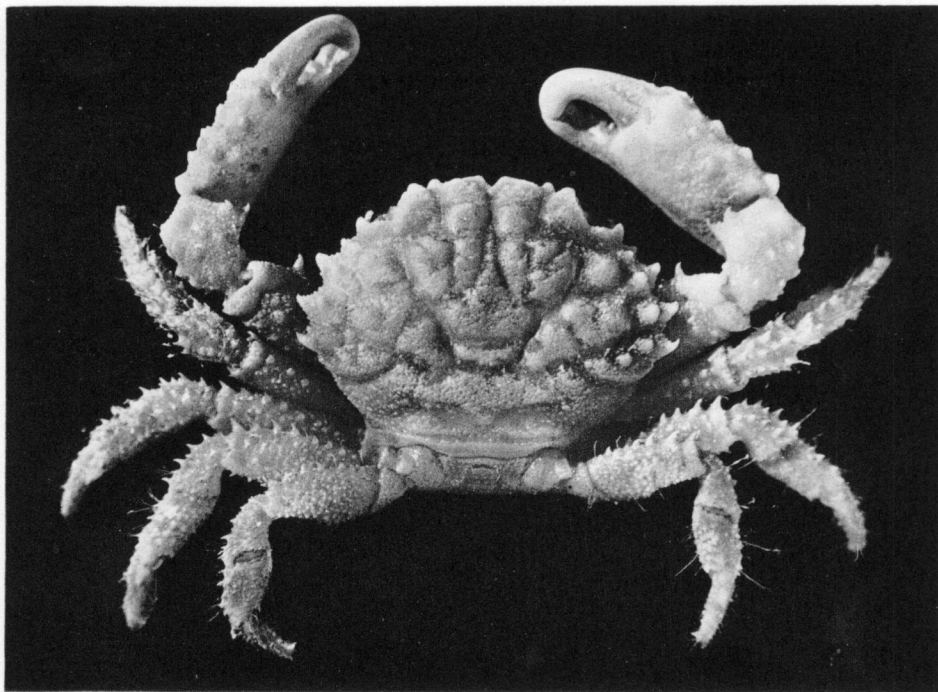
2

PLANCHE IX

- FIG. 1. — *Phymodius granulosis* (de Man), ♂ juv. 5,7 × 7 mm, Madagascar N.W., MILLOT coll., BALSS det. *Chlorodopsis* aff. *scabricula* Dana.
- FIG. 2. — *Phymodius granulosis* (de Man), ♂ 9 × 12,3 mm, Banda Neira, GORDON det. *Phymodius* sp.



1



2

CRUSTACÉS DÉCAPODES DE LA CALYPSO

PLANCHE X

- FIG. 1-2. — « *Chlorodius miliaris* A. Milne Edwards », syntype ♀ 9 × 14,5 mm,
Nouvelle-Calédonie, BALANSA coll. :
1, petit chéllipède.
2, carapace.
- FIG. 3. — *Phymodius* aff. *laysani* Rathbun, ♀ 6,4 × 9 mm, Aldabra, Calypso
coll. 1954.