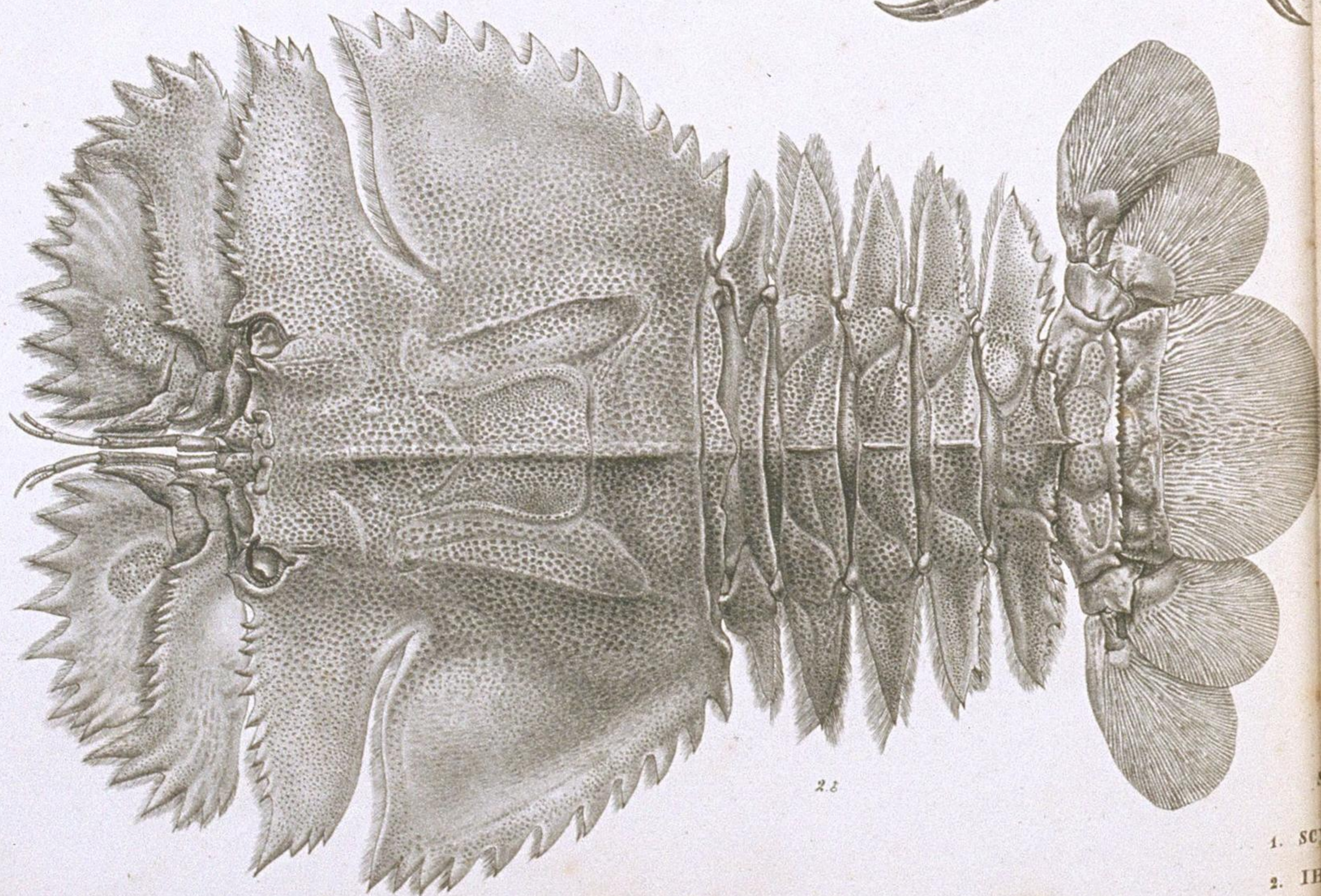
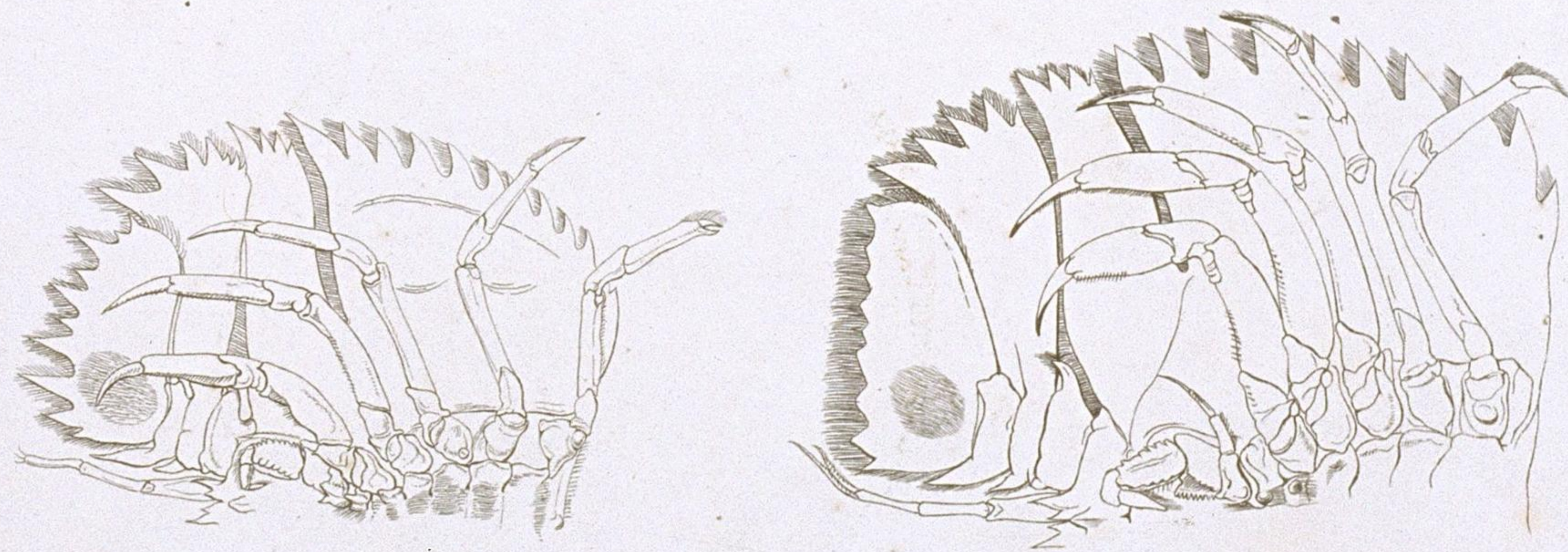




19



22

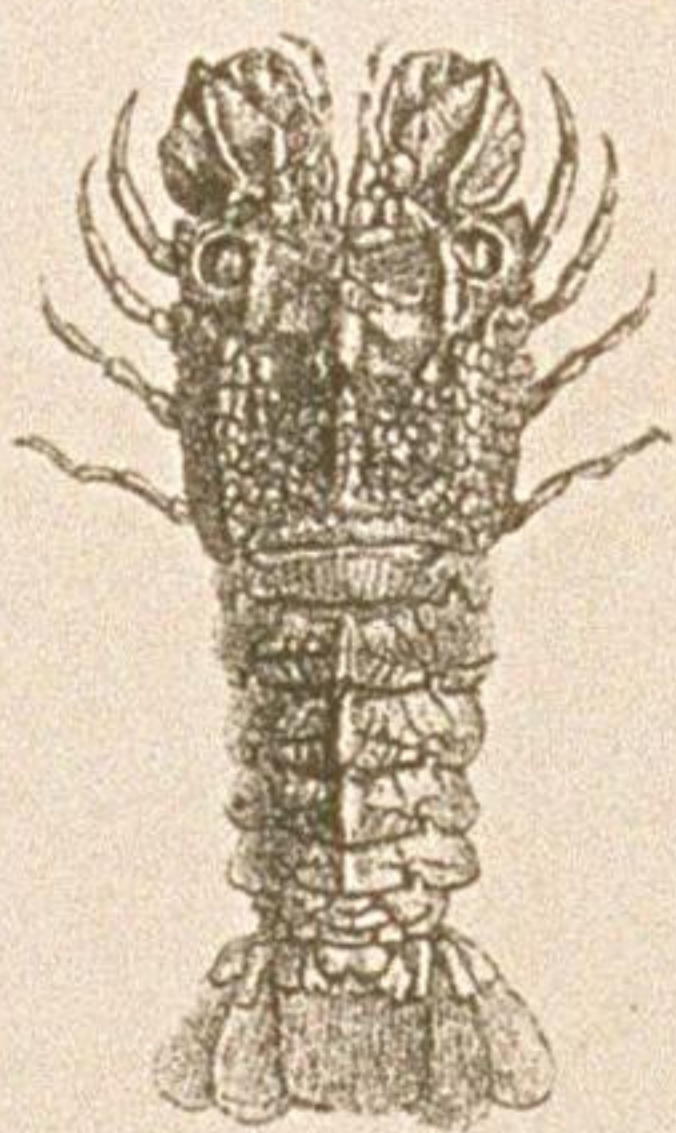
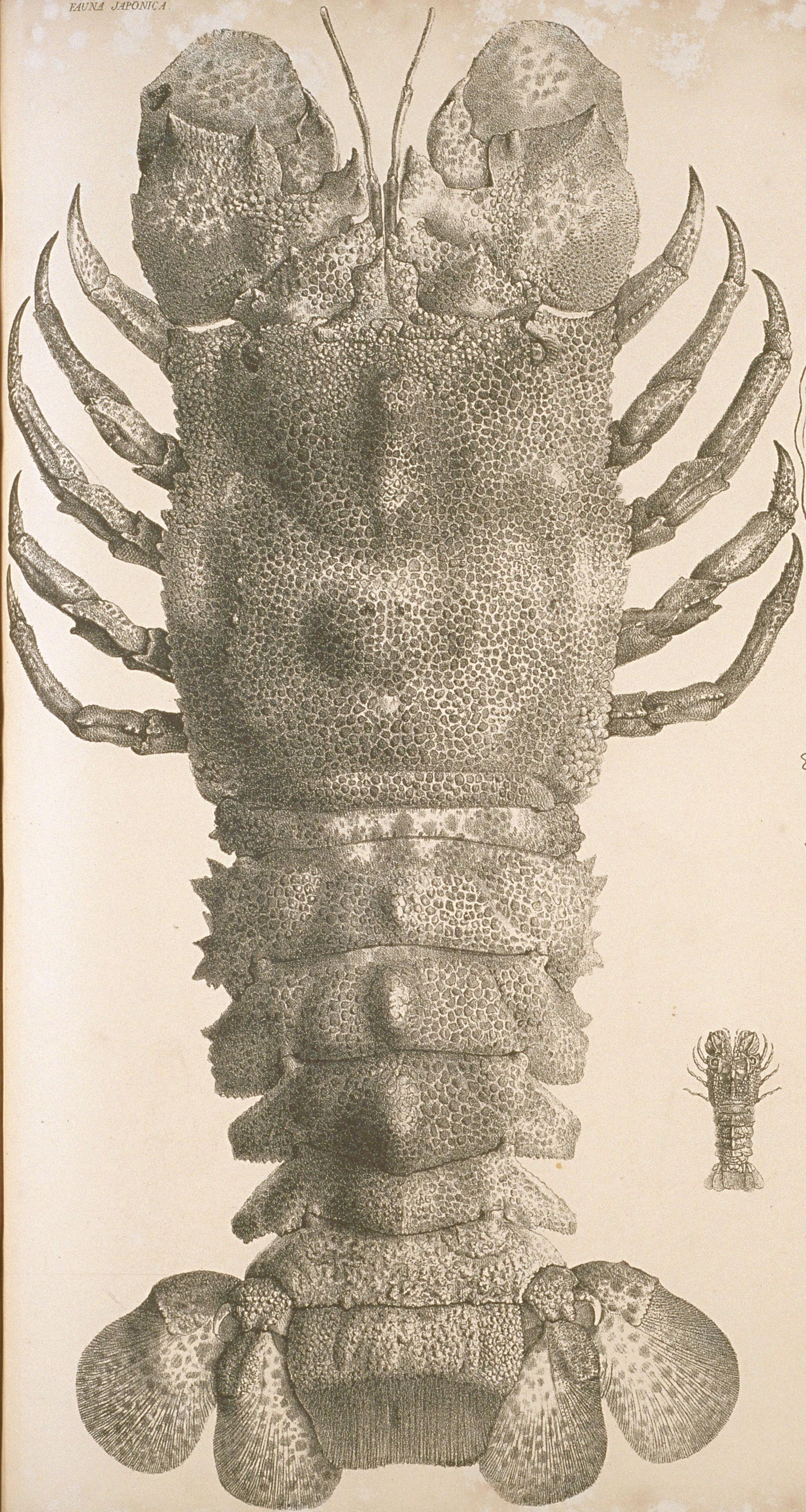


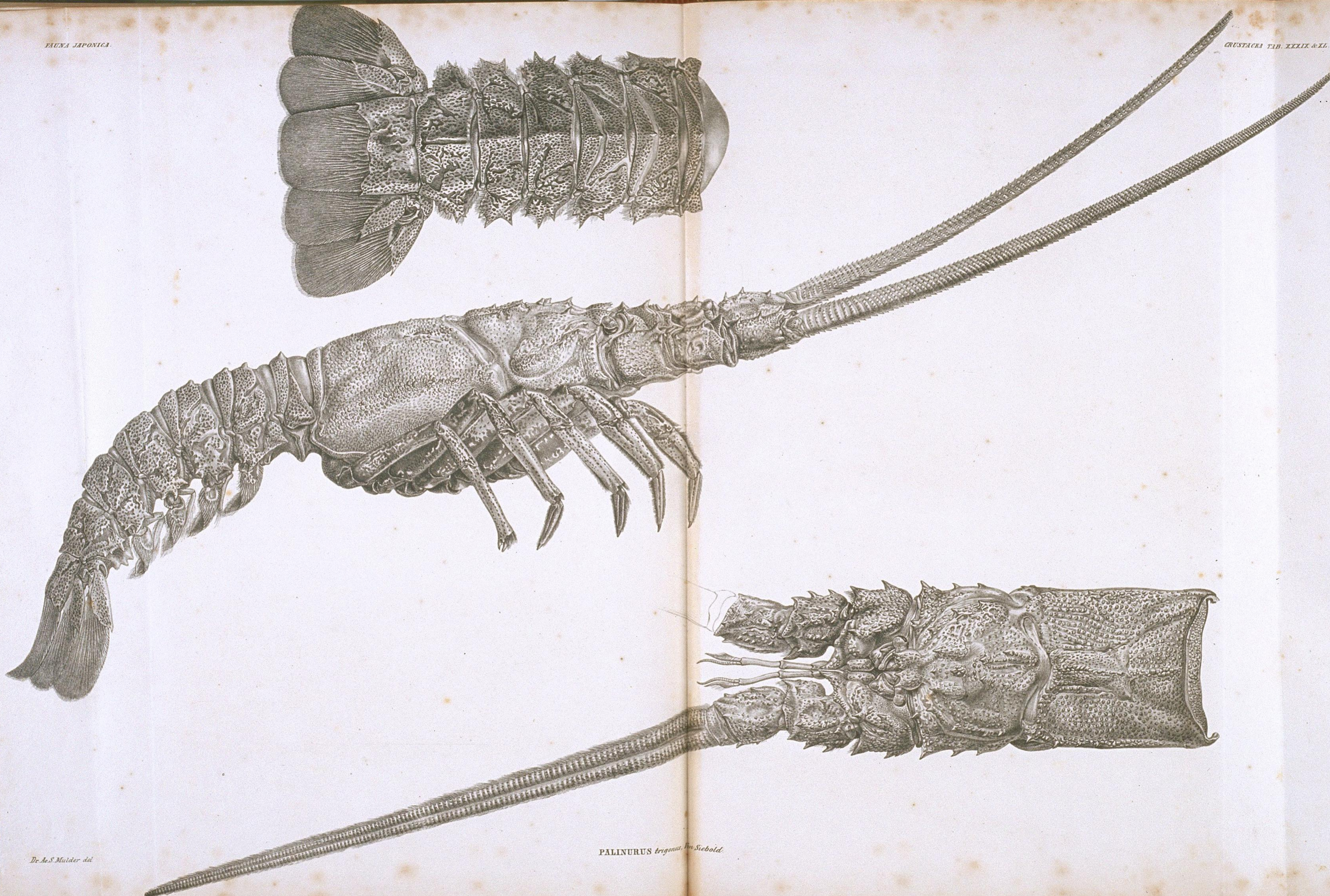
23

24

SCYLLARUS ET IBACUS.

- 1. SCYLLARUS *Sieboldi*, De Haan.
- 2. IBACUS *ciliatus*, Von Siebold.

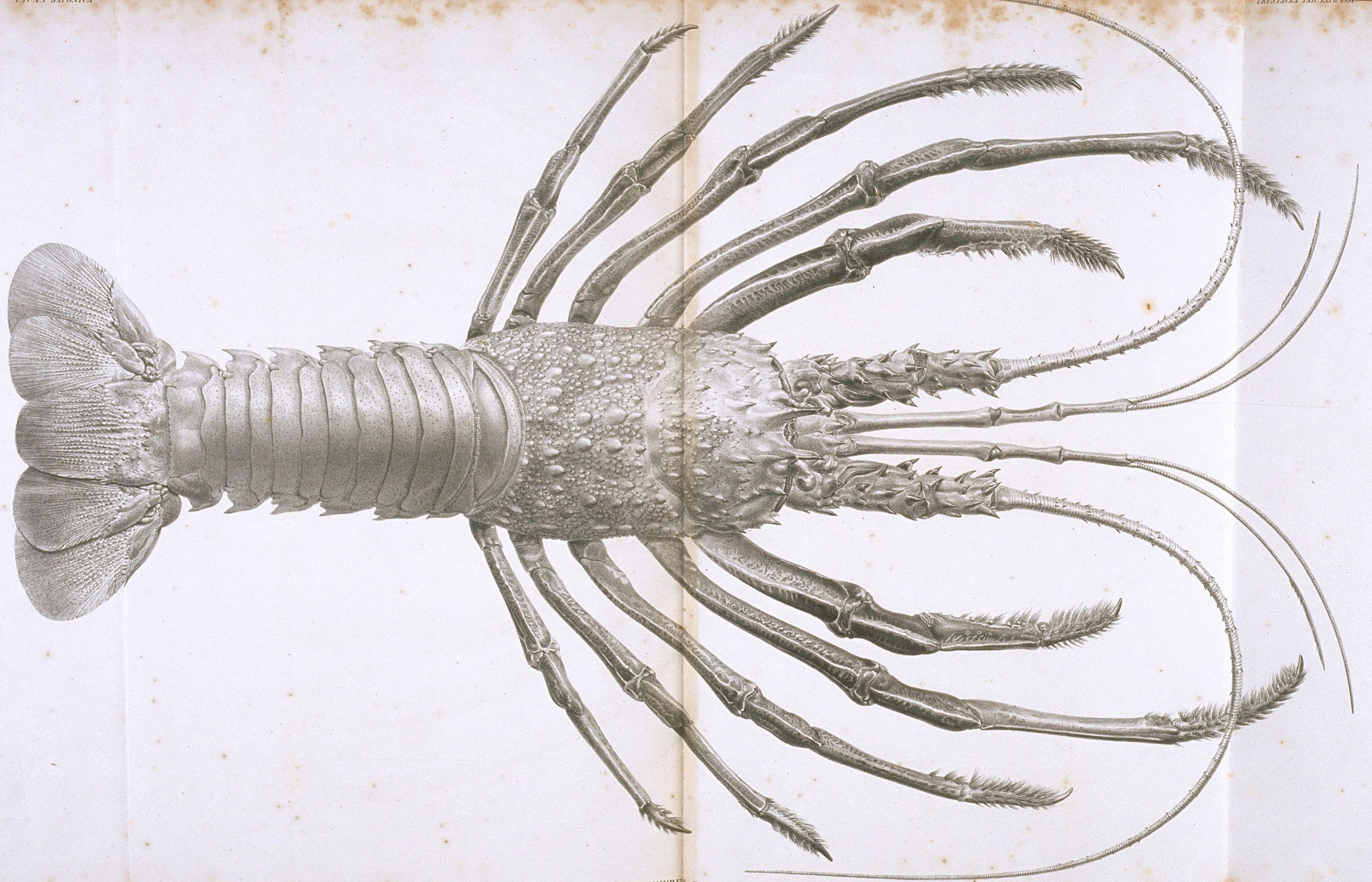




PALINURUS trigonus, Von Siebold.

Dr. A. S. Mulder del.

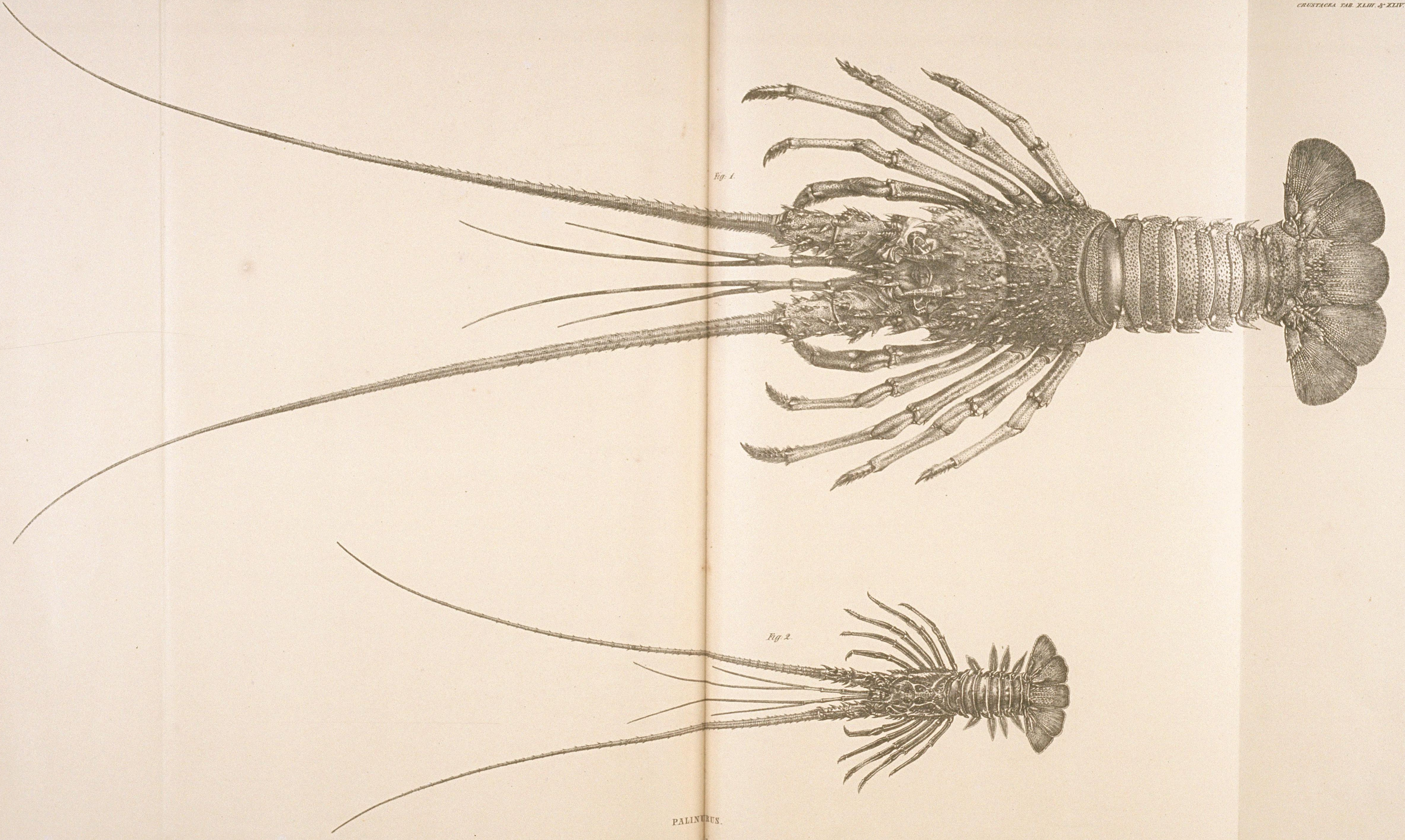




Dr. A. S. Møller del.

PALINURUS, Fabr.
PALINURUS japonicus, de Sieb.

Lith. a. gdr. v. Arné & C^o.



PALINURUS.

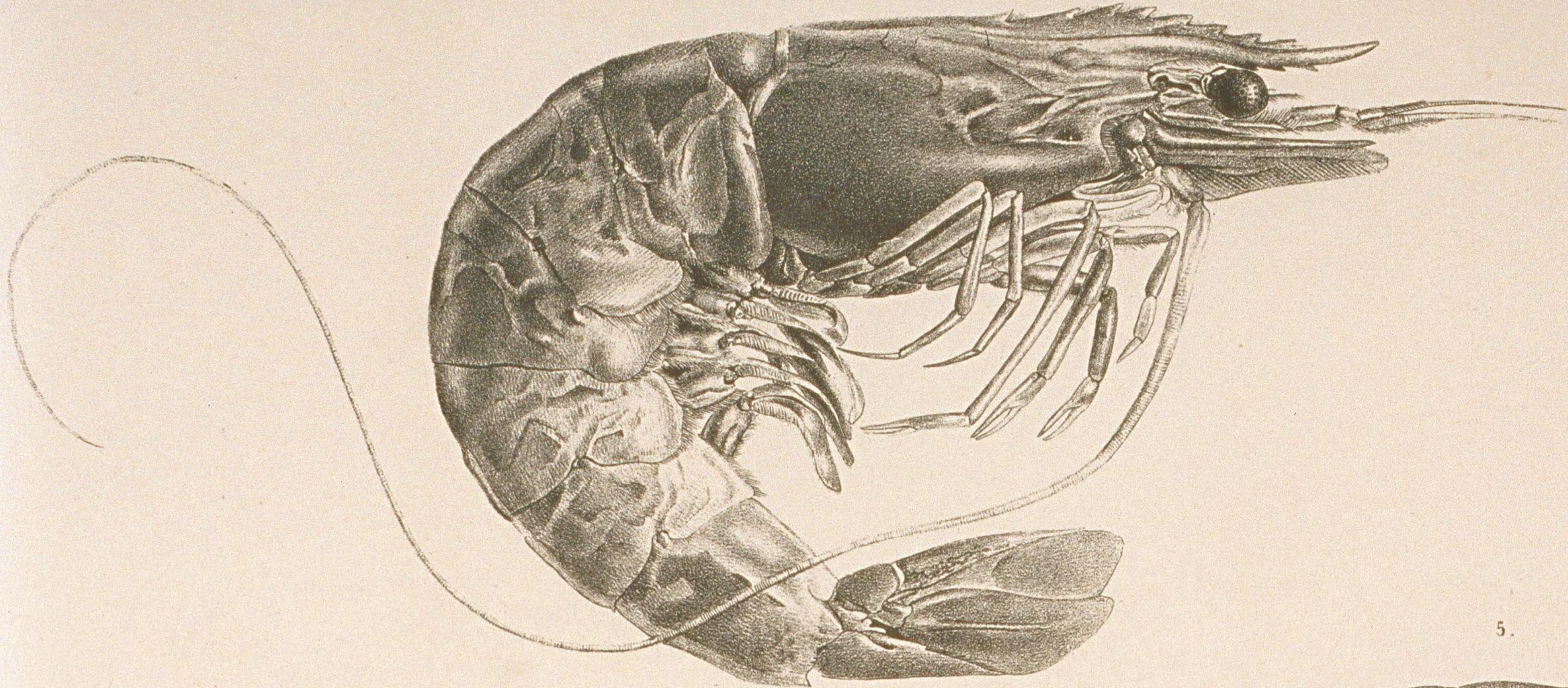
Fig. 1. PALINURUS Bürgeri, n. sp. Fig. 2. PAL. fuscatus, junior.

Lith. gedr. und. v. d. Naturg. - Arnz & Co

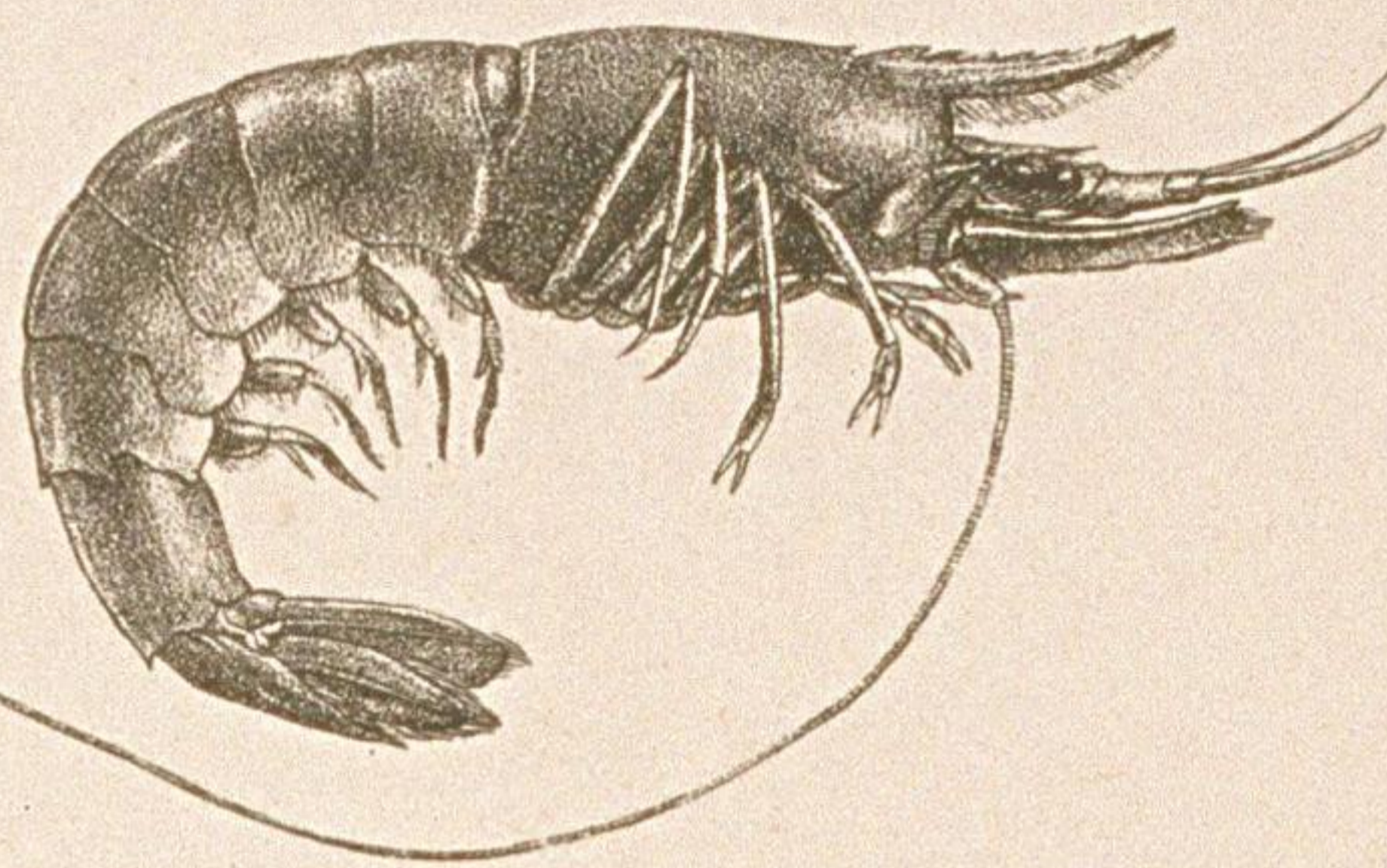


1. ALPHEUS brevicristatus, n. sp. 2. A. rapax F 3. A. bis-incisus, n. sp. 4. A. digitalis, n. sp. 5. A. minor, n. sp. 6. HIPPOLYTE parvulus, n. sp. 7. H. plamrostris, n. sp. 8. H. denticulatus, n. sp. 9. H. hispinosus, n. sp. 10. H. cristatus, n. sp. 11. PALAEMON paucoidens n. sp. 12. P. latirostris n. sp. 13. P. dentatus, n. sp. 14. CRANGON bidentatus, n. sp. 15. C. angusticauda, n. sp.

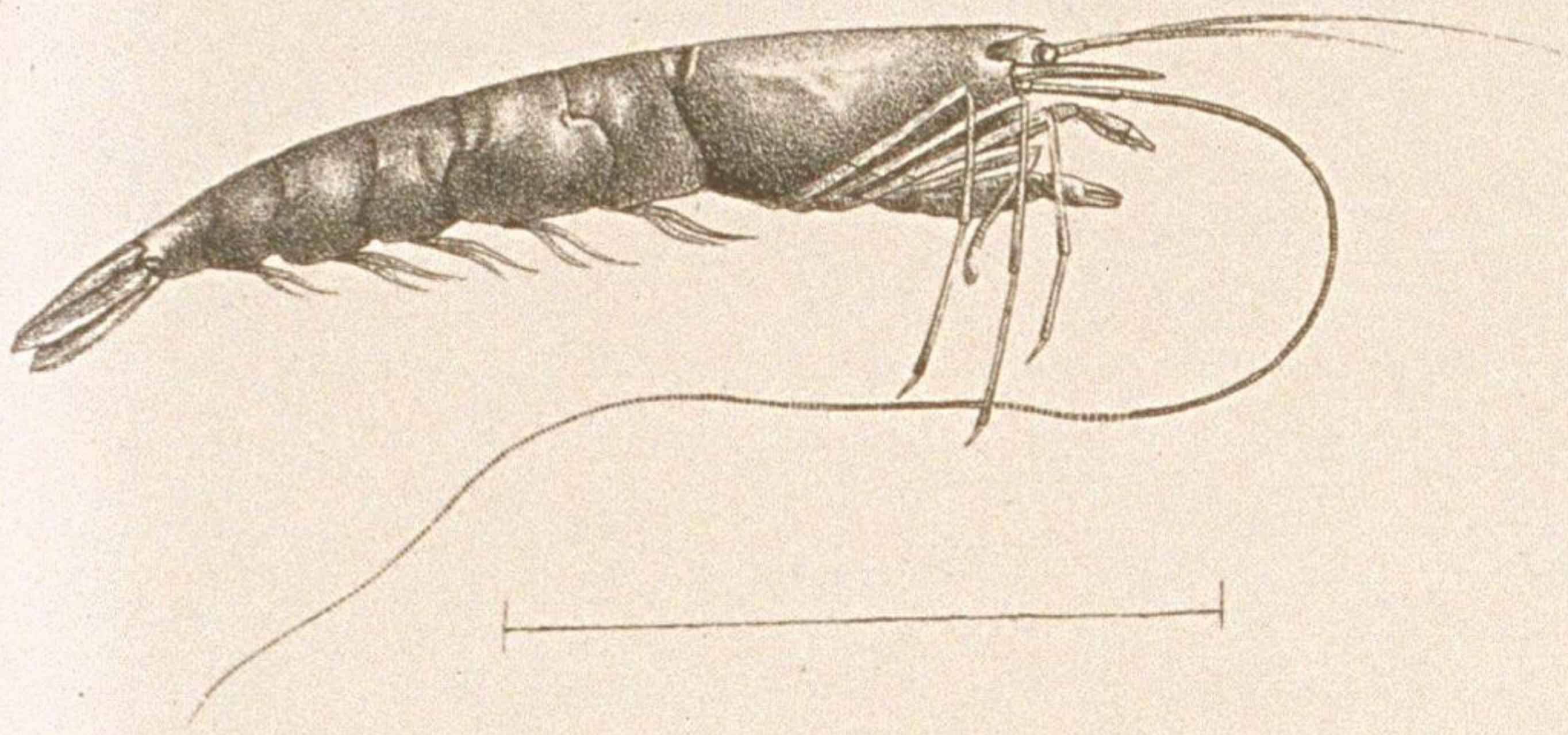
1.



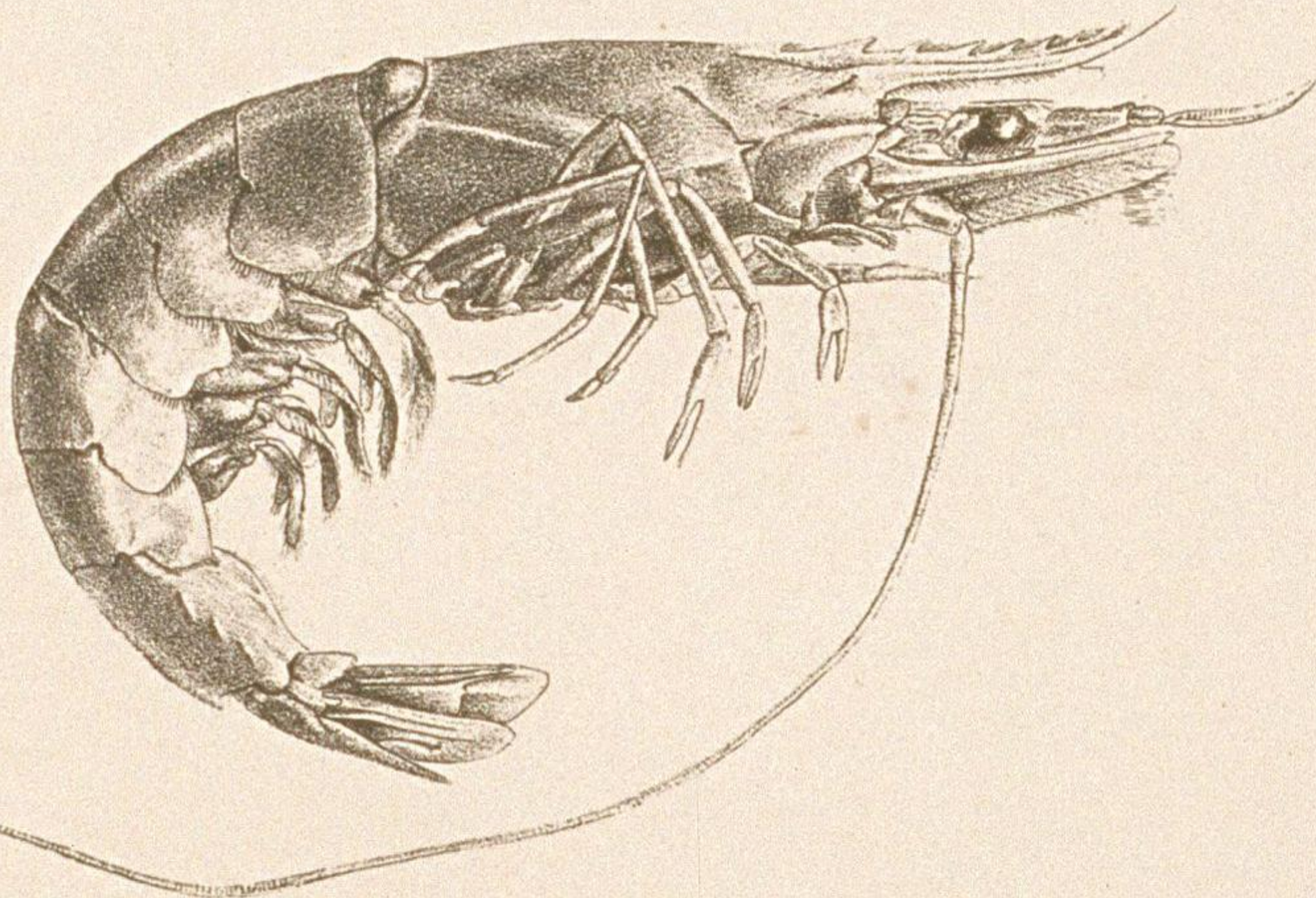
5.



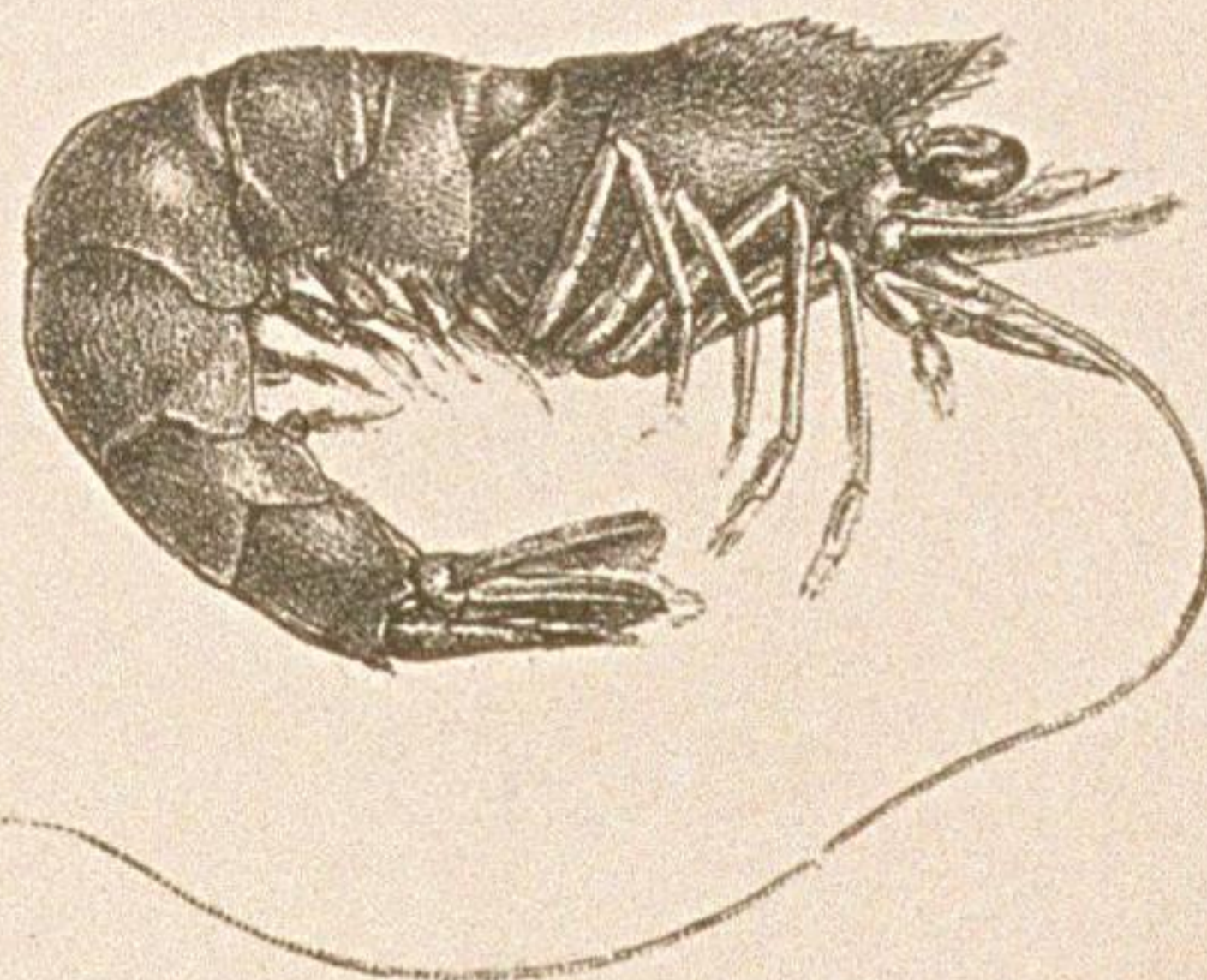
6.



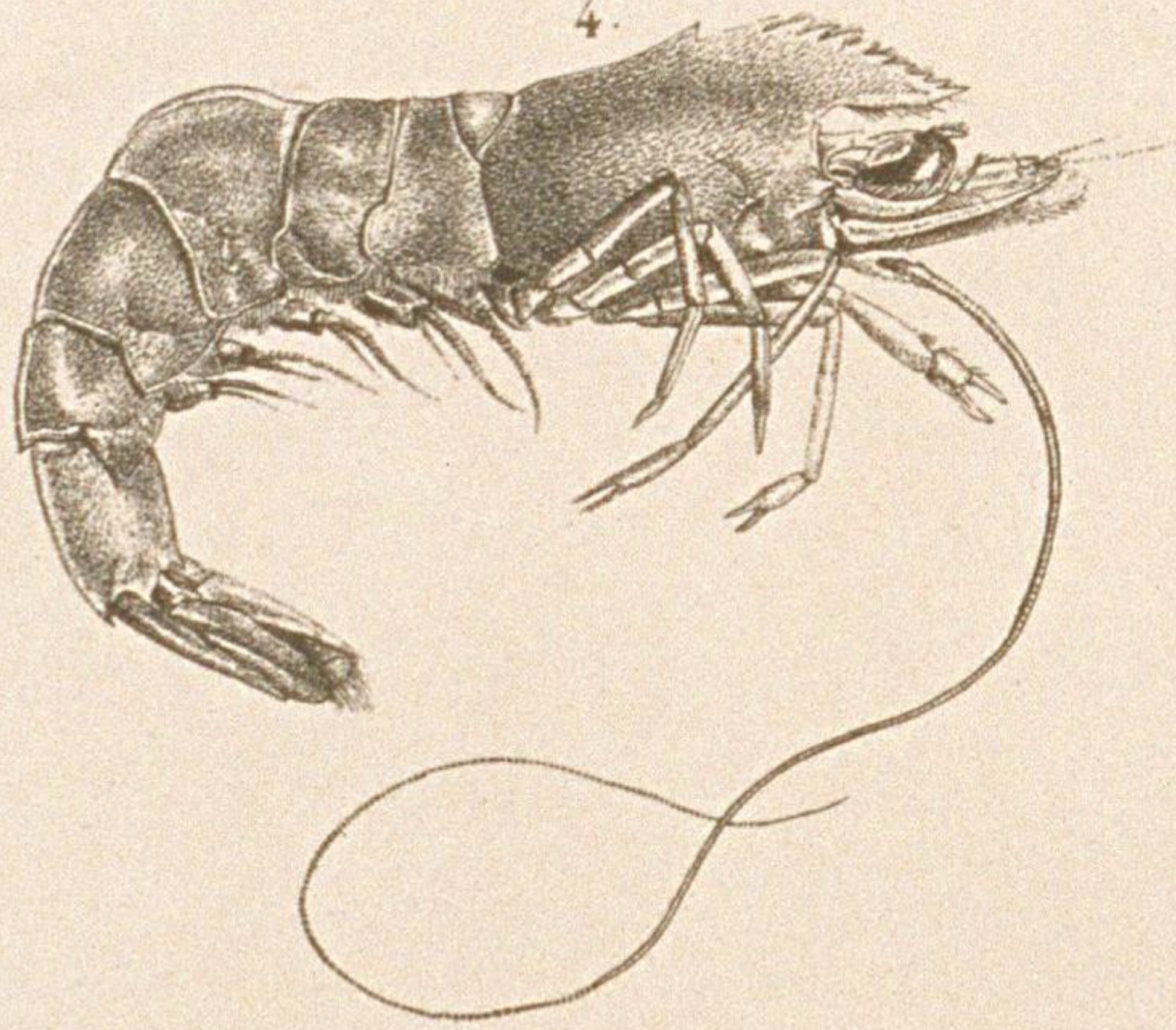
2.



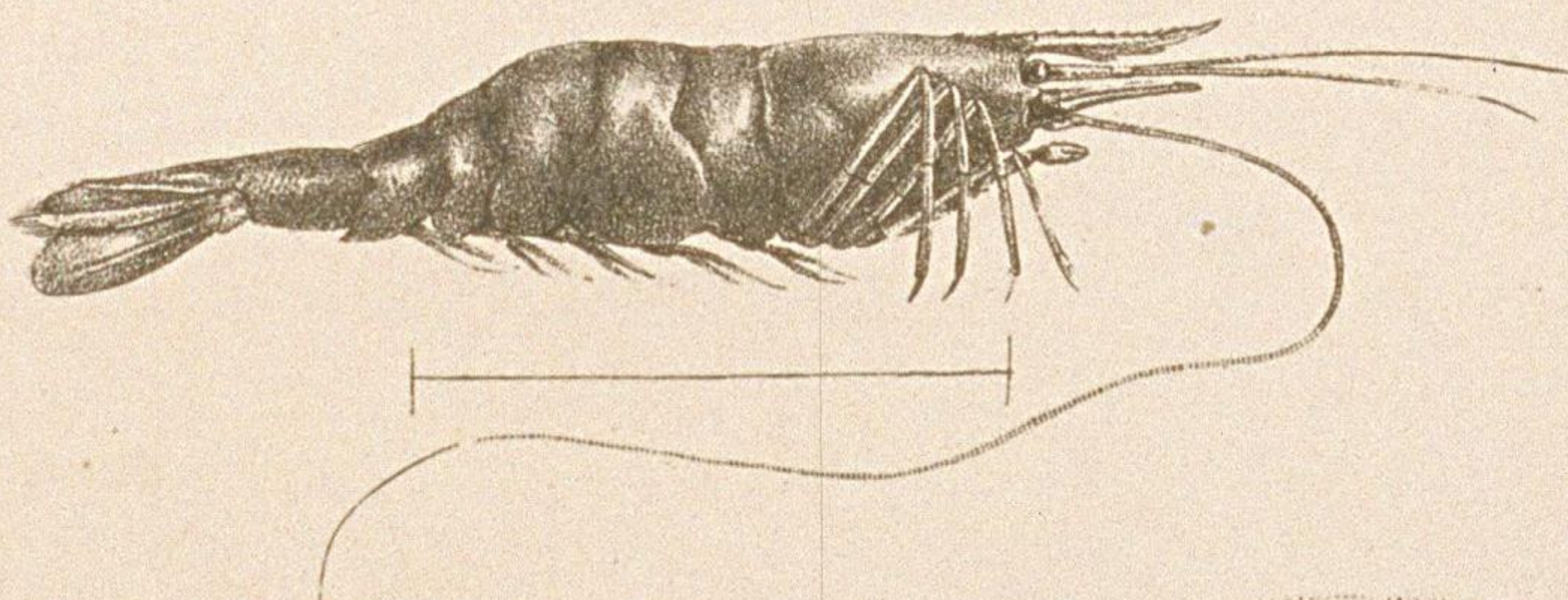
5.



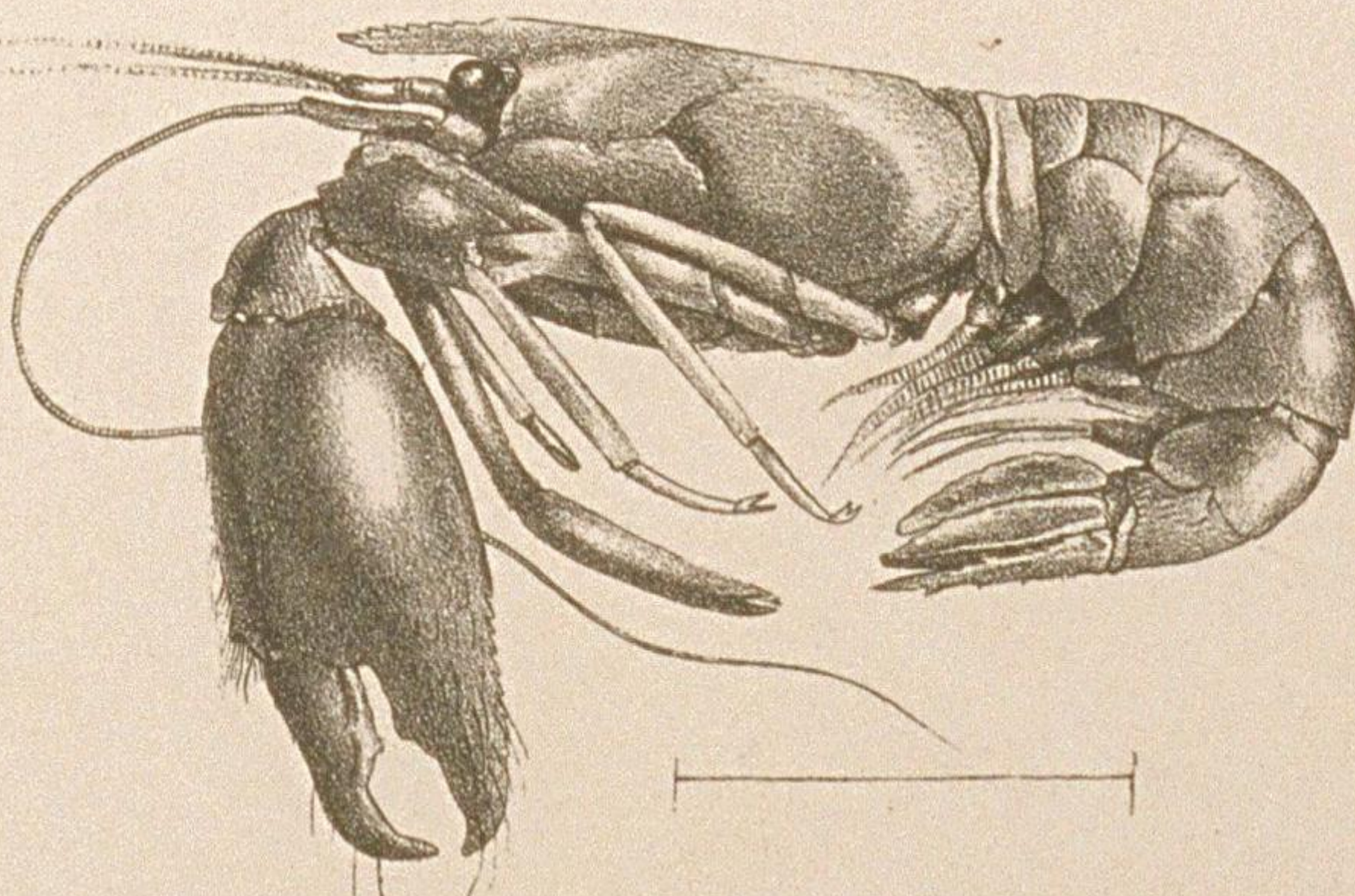
4.



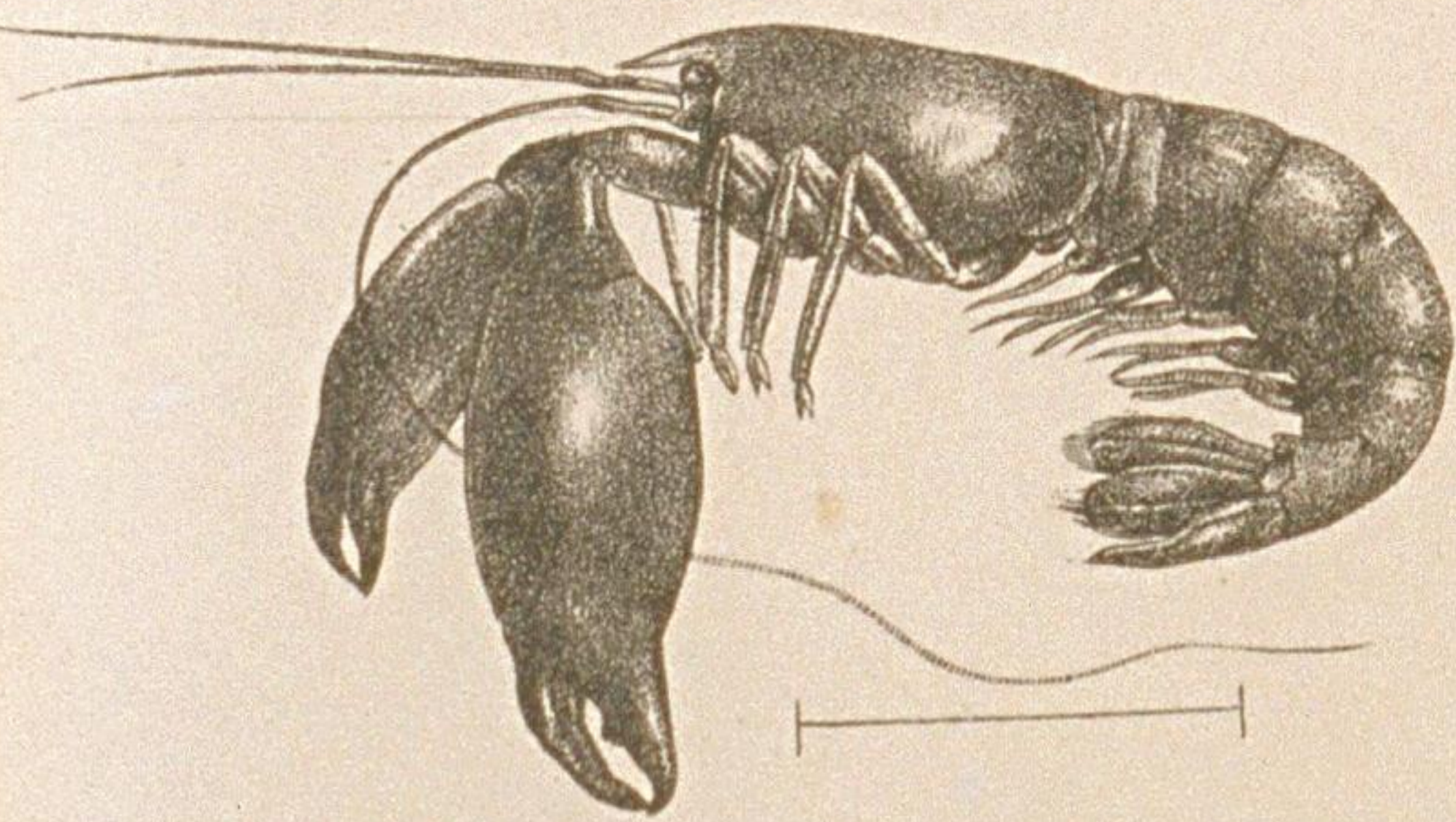
7.



9.



8.



1. PENEUS semisulcatus, n. sp. 2. P. ensis, n. sp. 3. P. barbatus, n. sp. 4. P. lamellatus, n. sp. 5. id. var. 6. NIKA japonica, n. sp.

7. EPHYRA compressa, n. sp. 8. HYMENOCERA niponensis, n. sp. 9. SPONGICOLA venusta, n. sp.