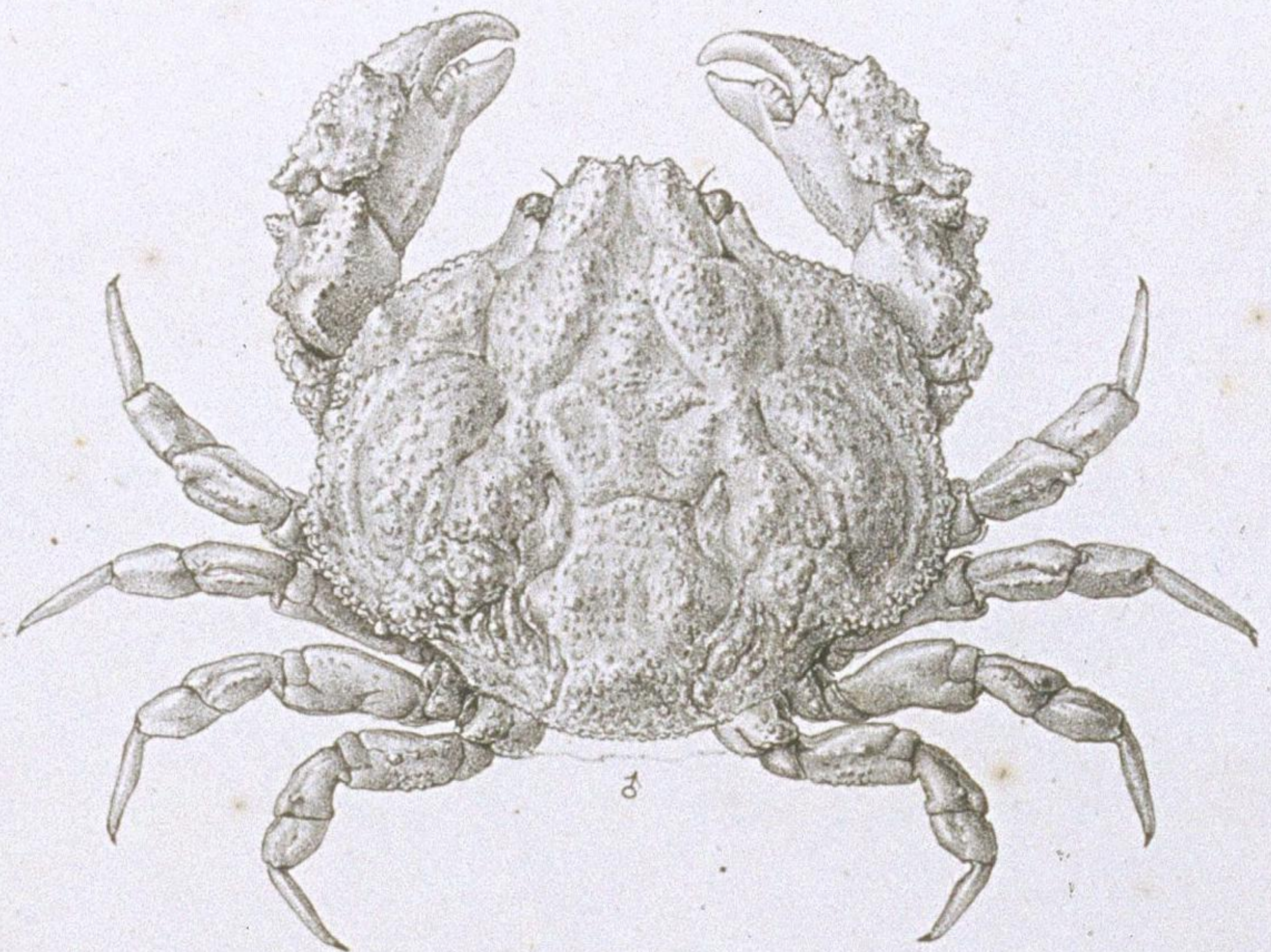
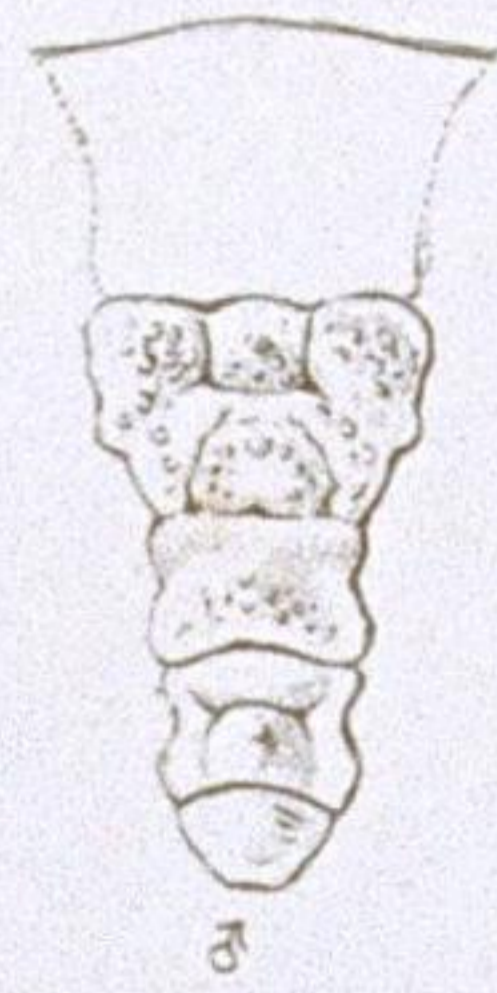
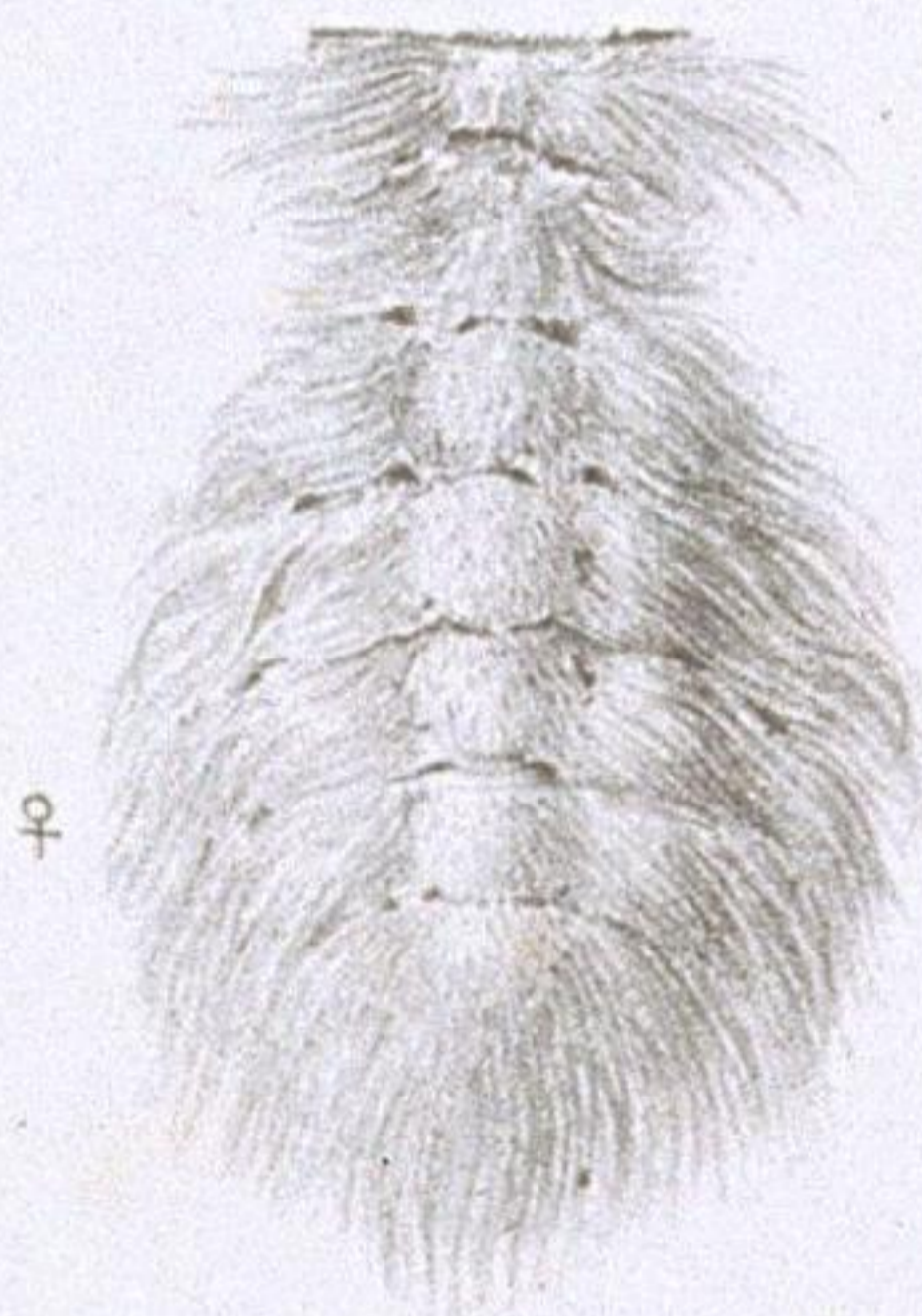
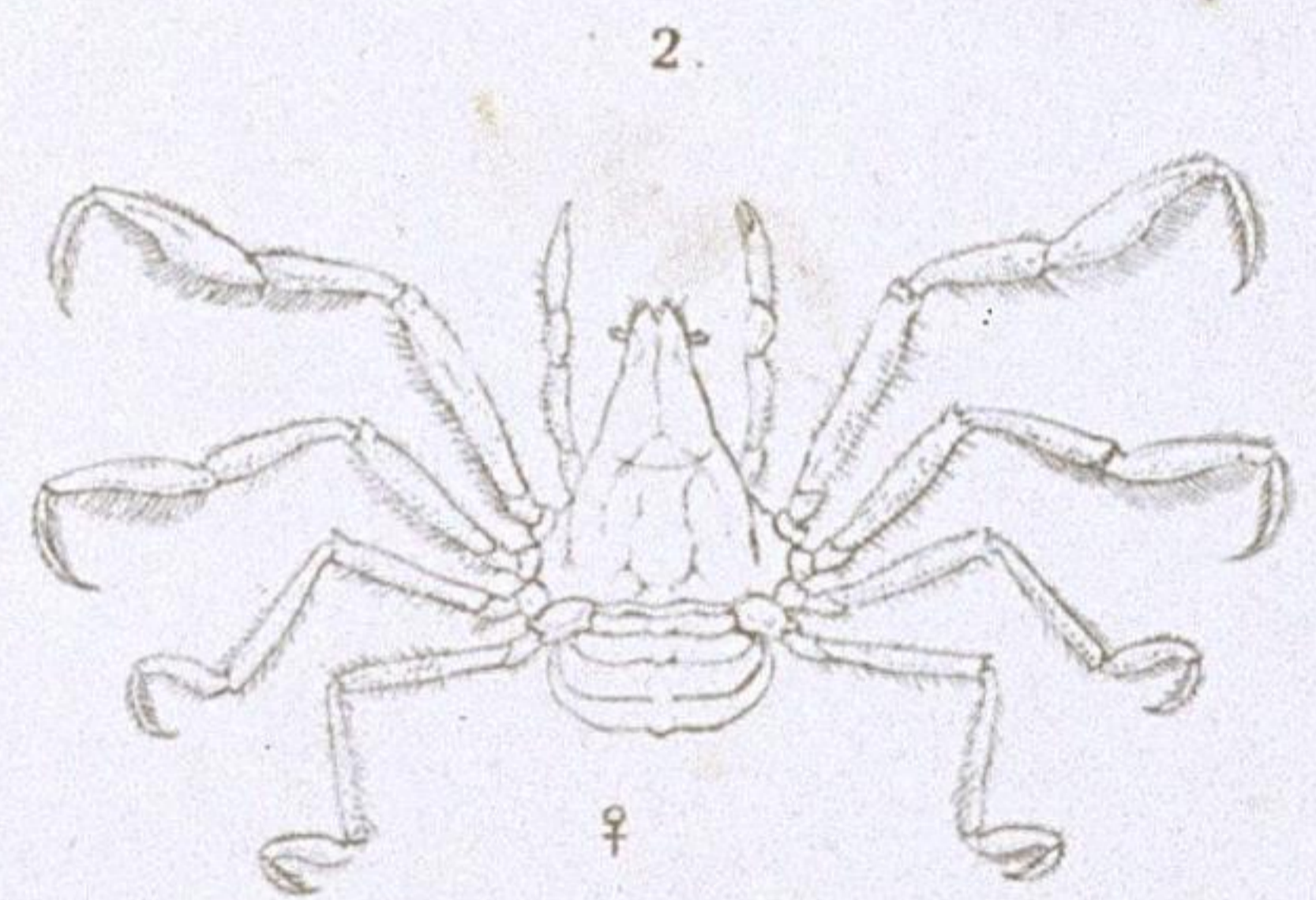
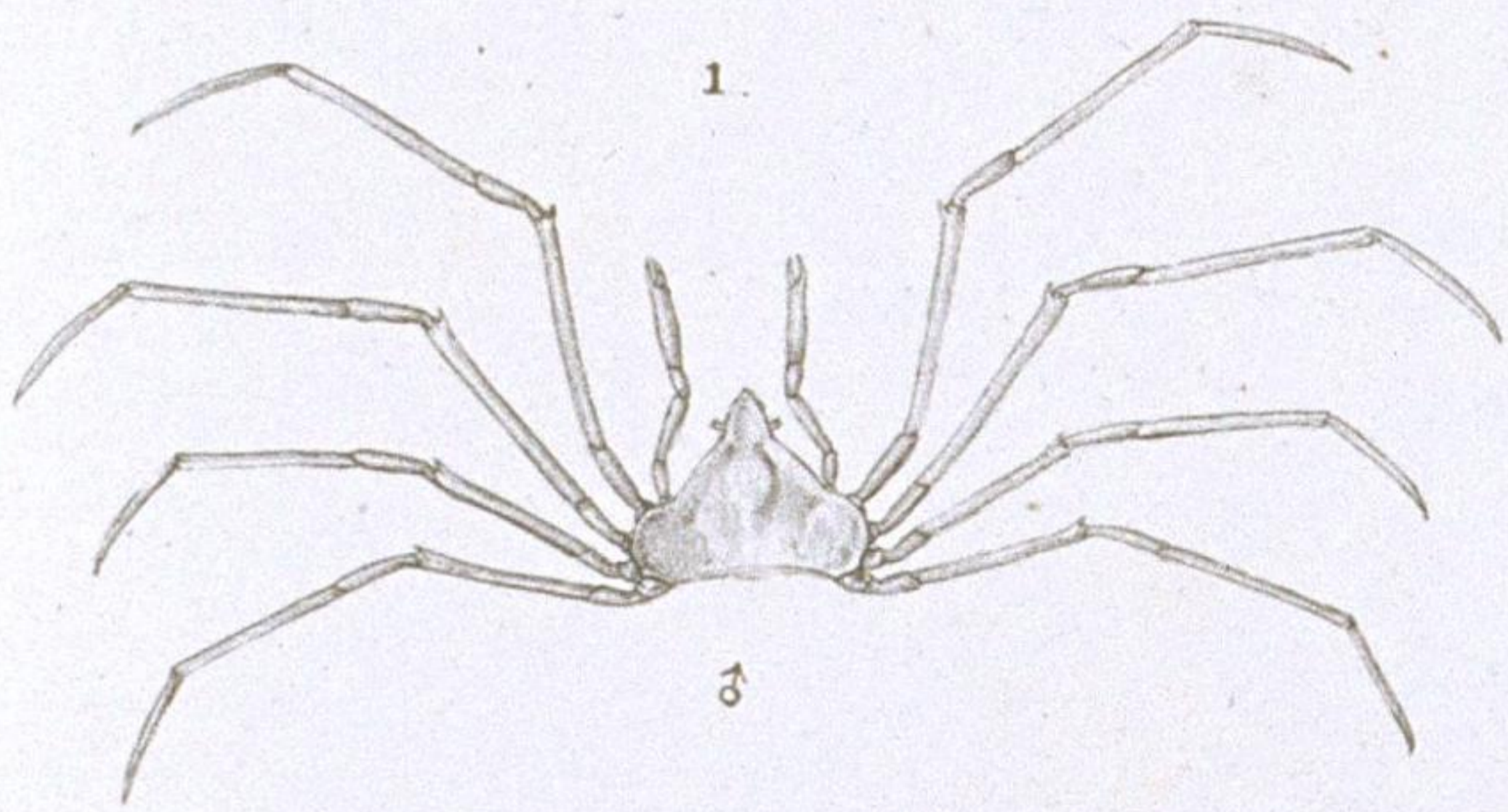
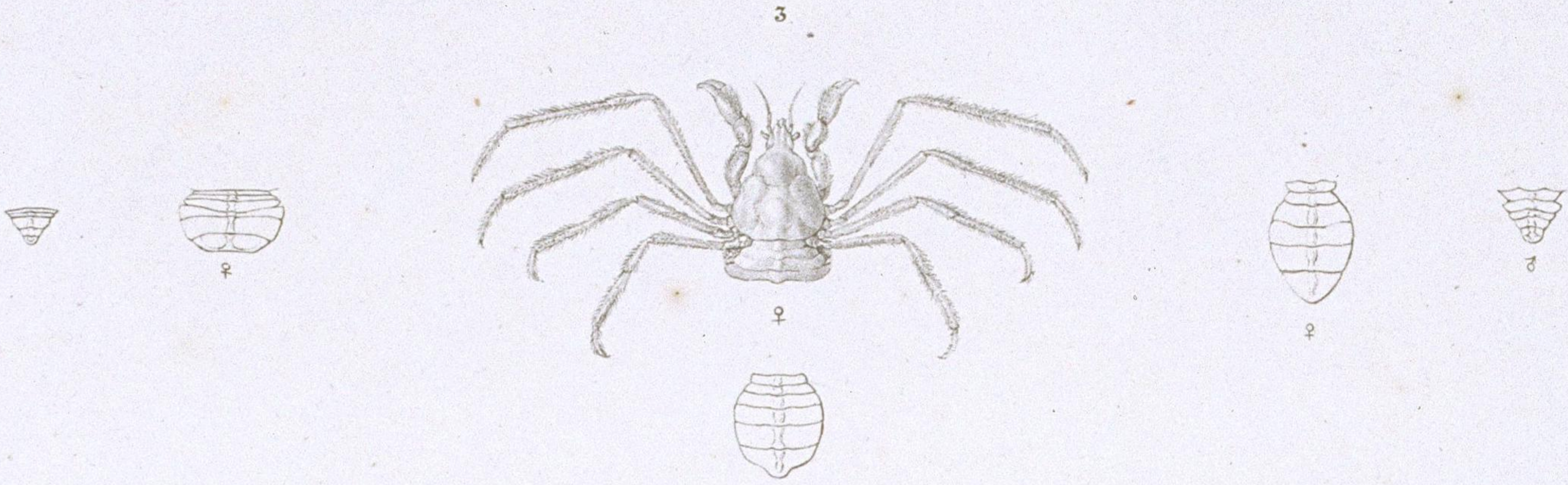
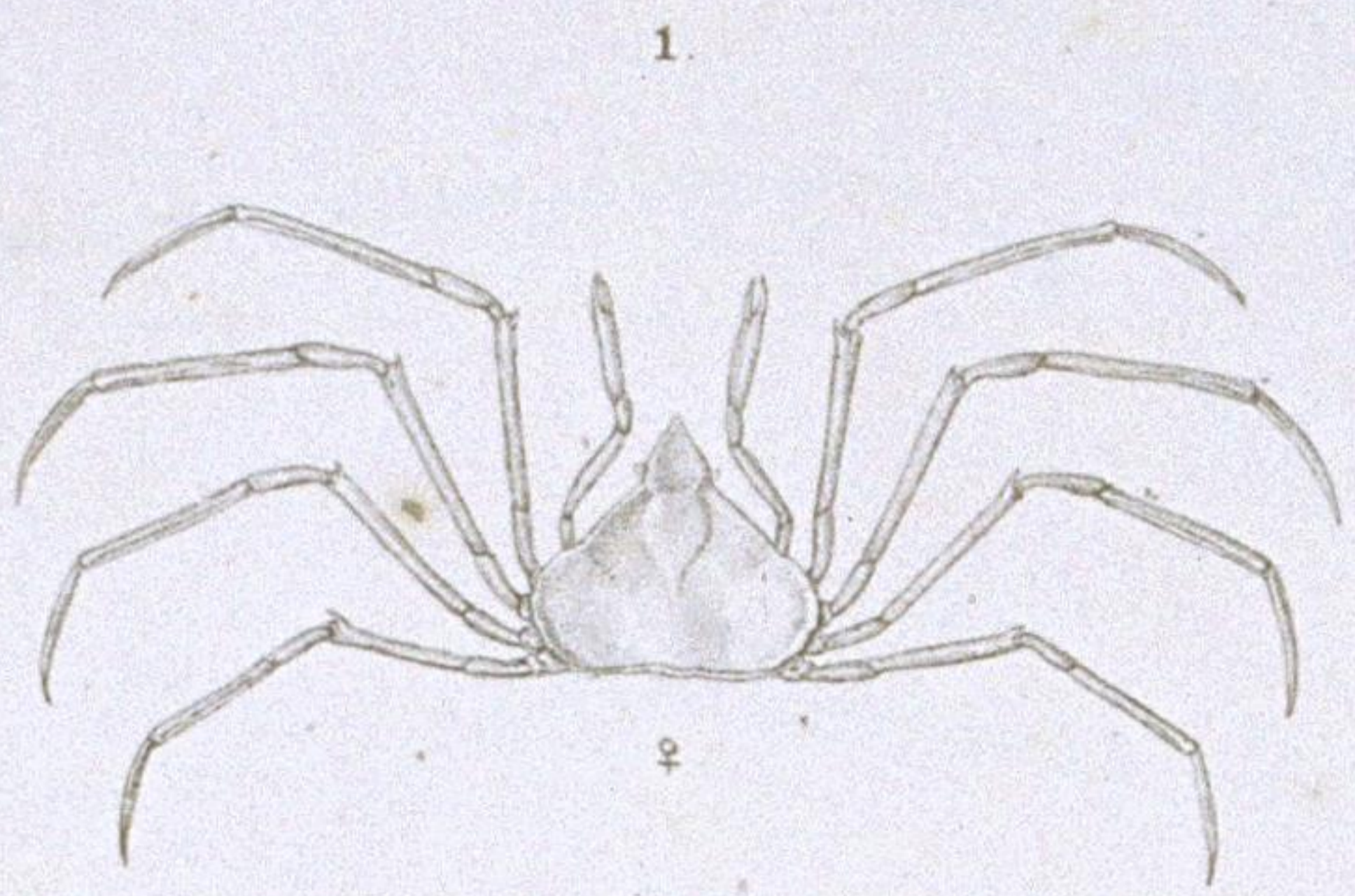




Dr. An. S. Mulder del.

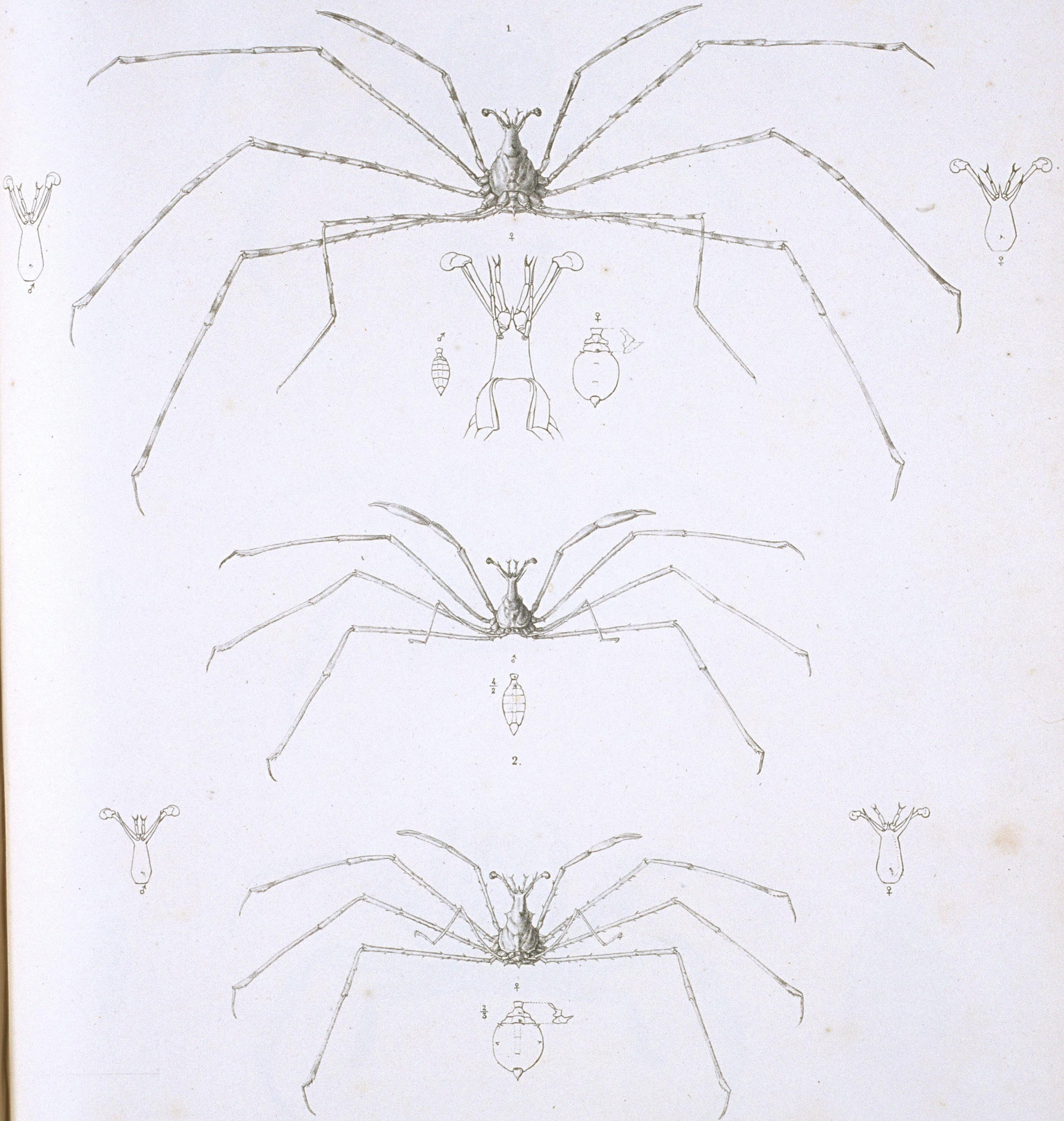
INACHUS (Macrocheira) *Kaempferi*, n. sp. magnit. dimid. — a. Chela maris adulti.

Lut. Z. Hymen.



INACHUS ET TRICHIA.

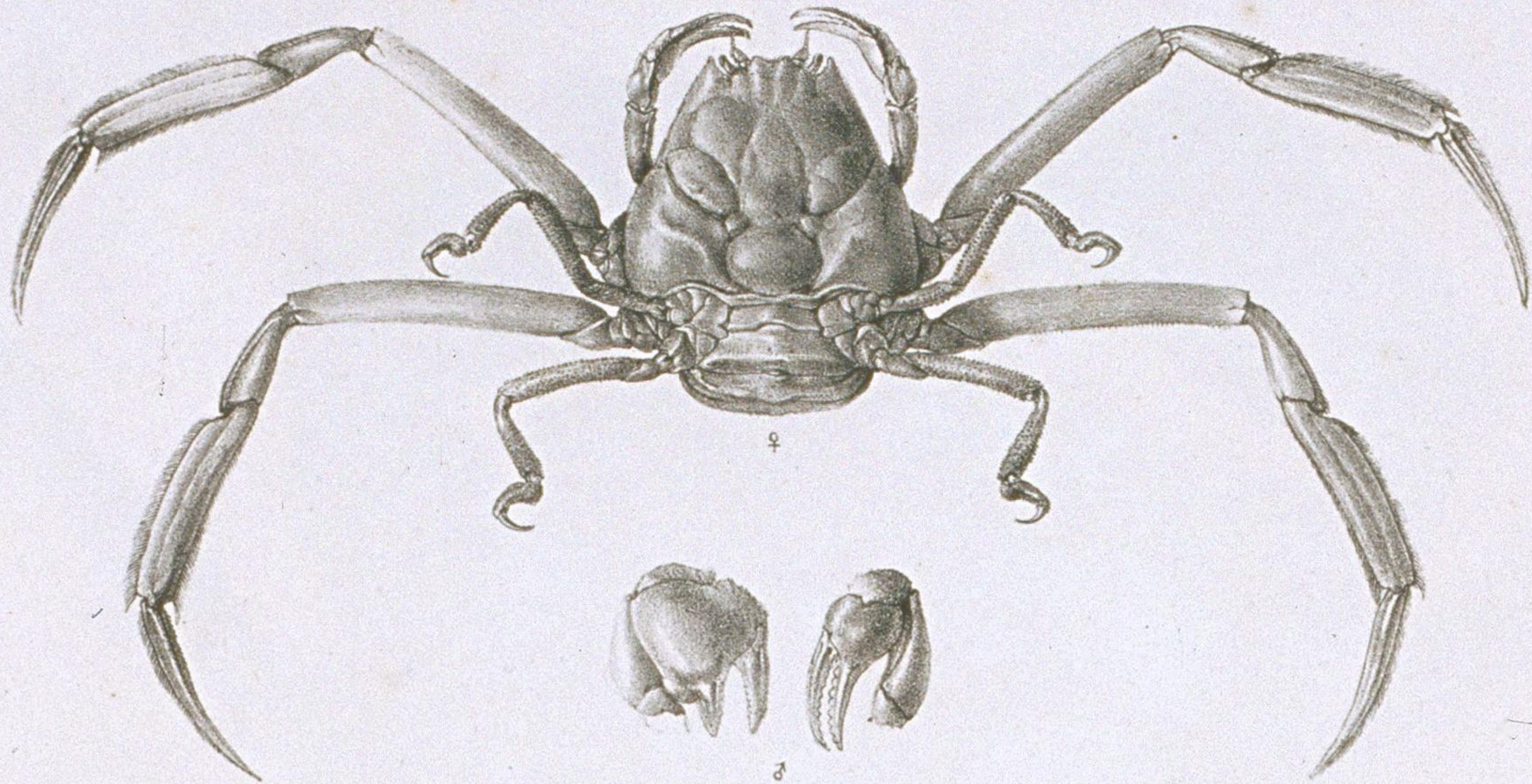
- 1. INACHUS (Elamene) unguiformis, n. sp. — 2. INACHUS (Oncinopus) Aranca, n. sp. — 3. INACHUS (Achaeus) japonicus, n. sp.
- 4. TRICHIA Dromiaeförmis, n. sp.; ♂ pilis adentis.



LATREILLIA.

1. LATREILLIA *valida* n. sp. — 2. LATREILLIA *phalangium* n. sp.

1.

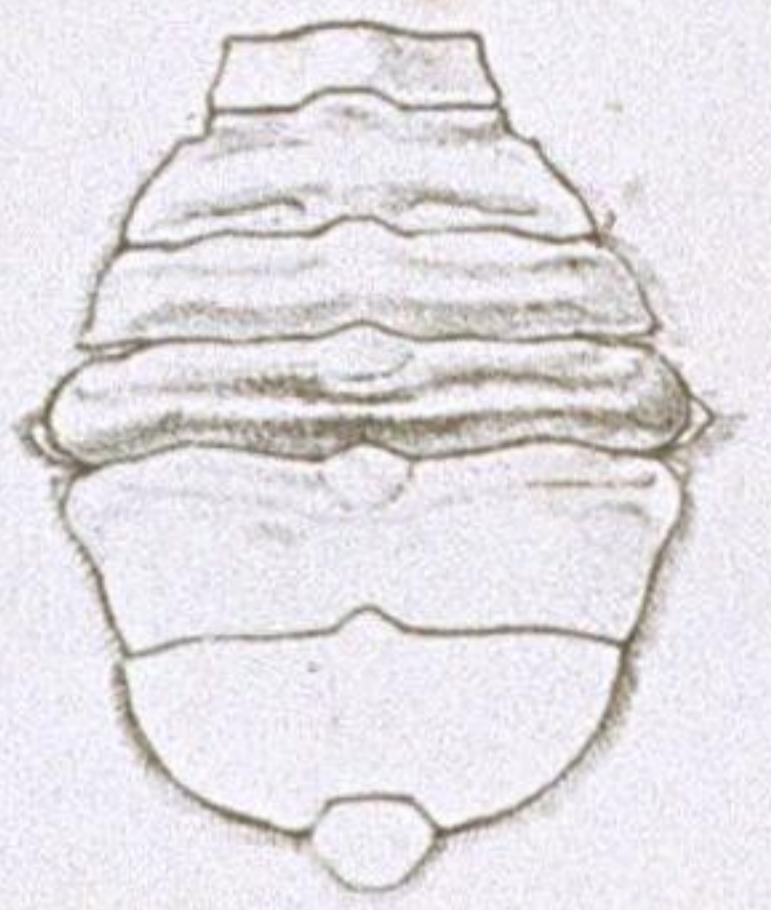


♀

♂

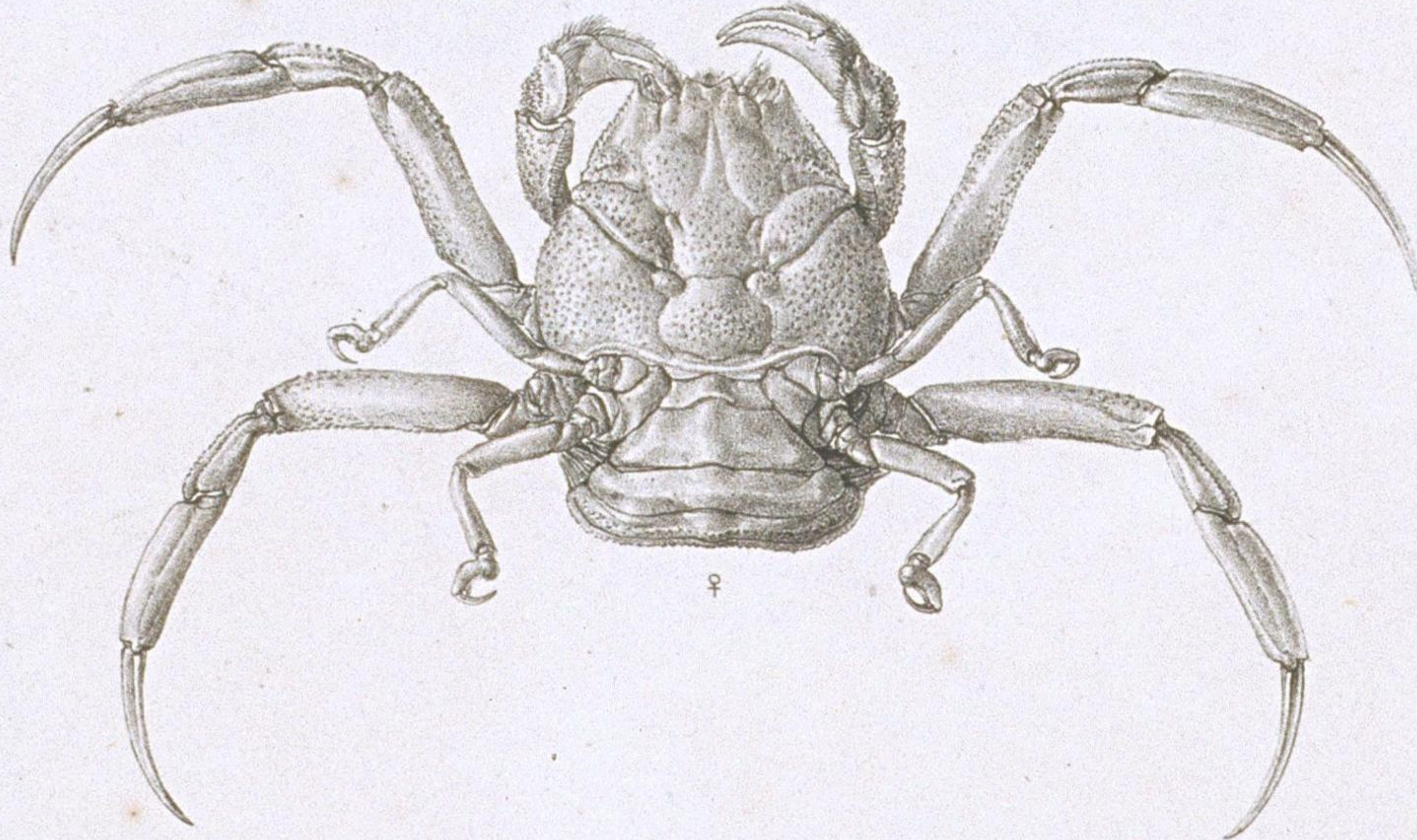


♂



♀

2.



♀

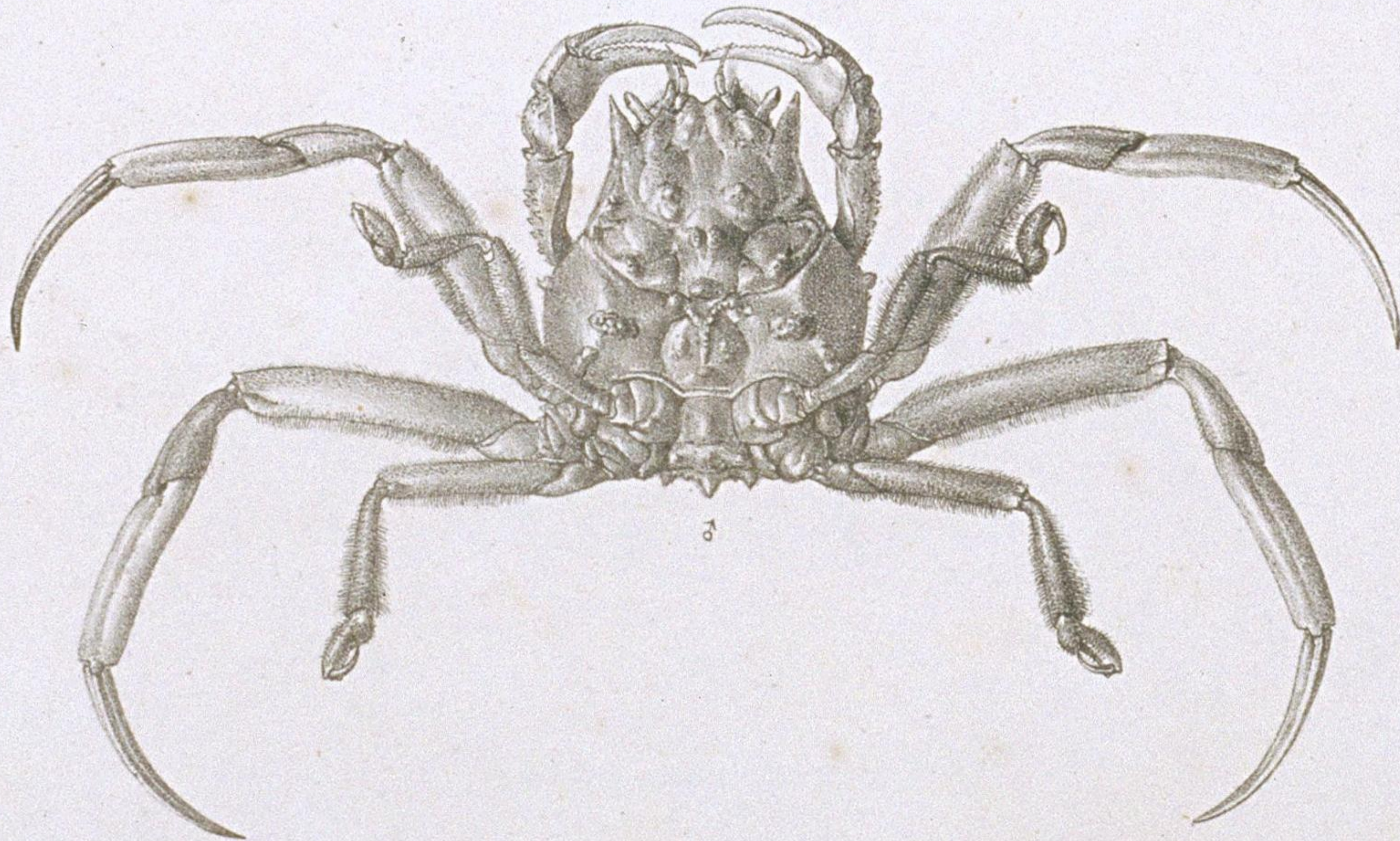


♂



♀

3.



♀



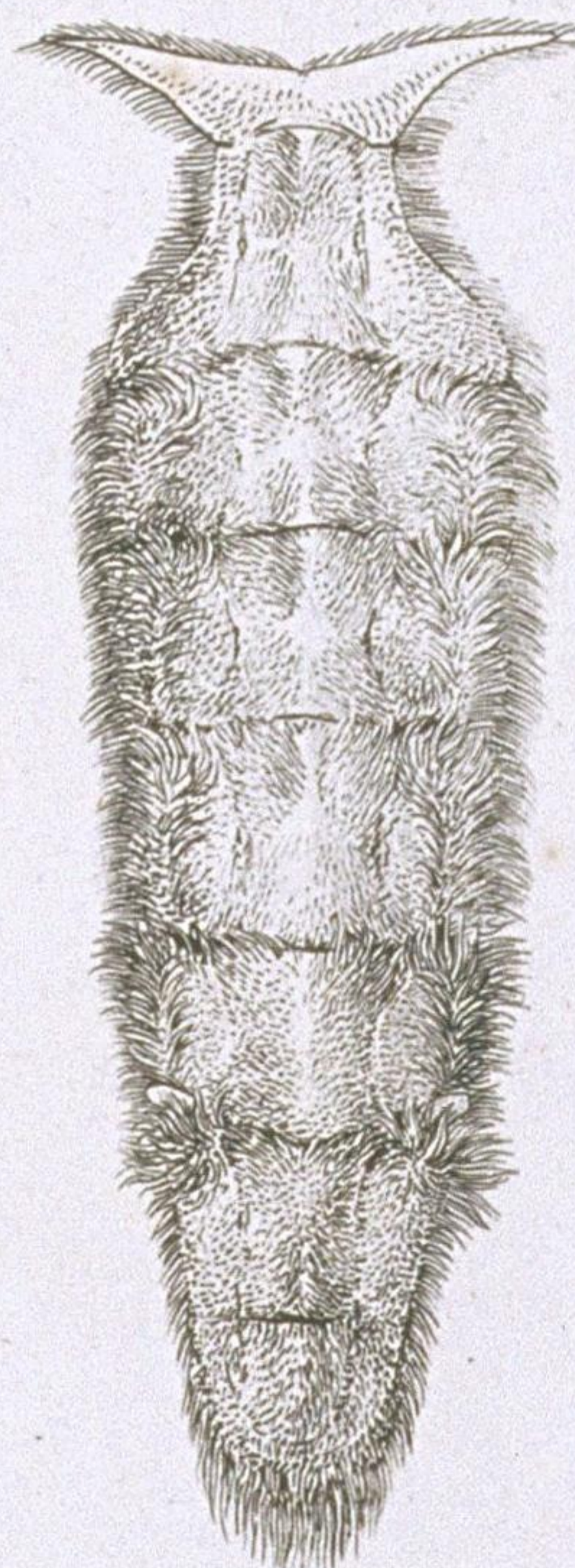
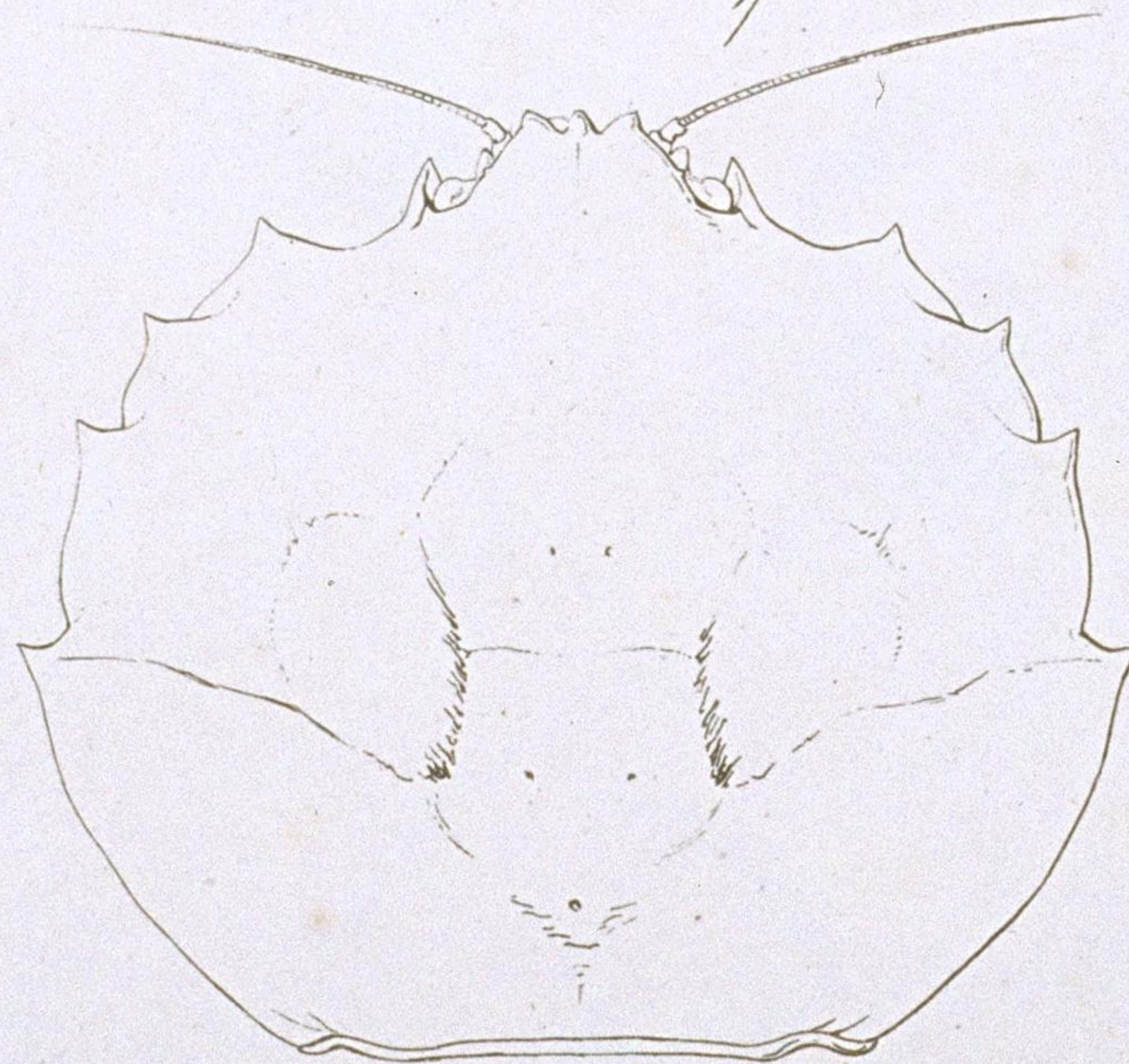
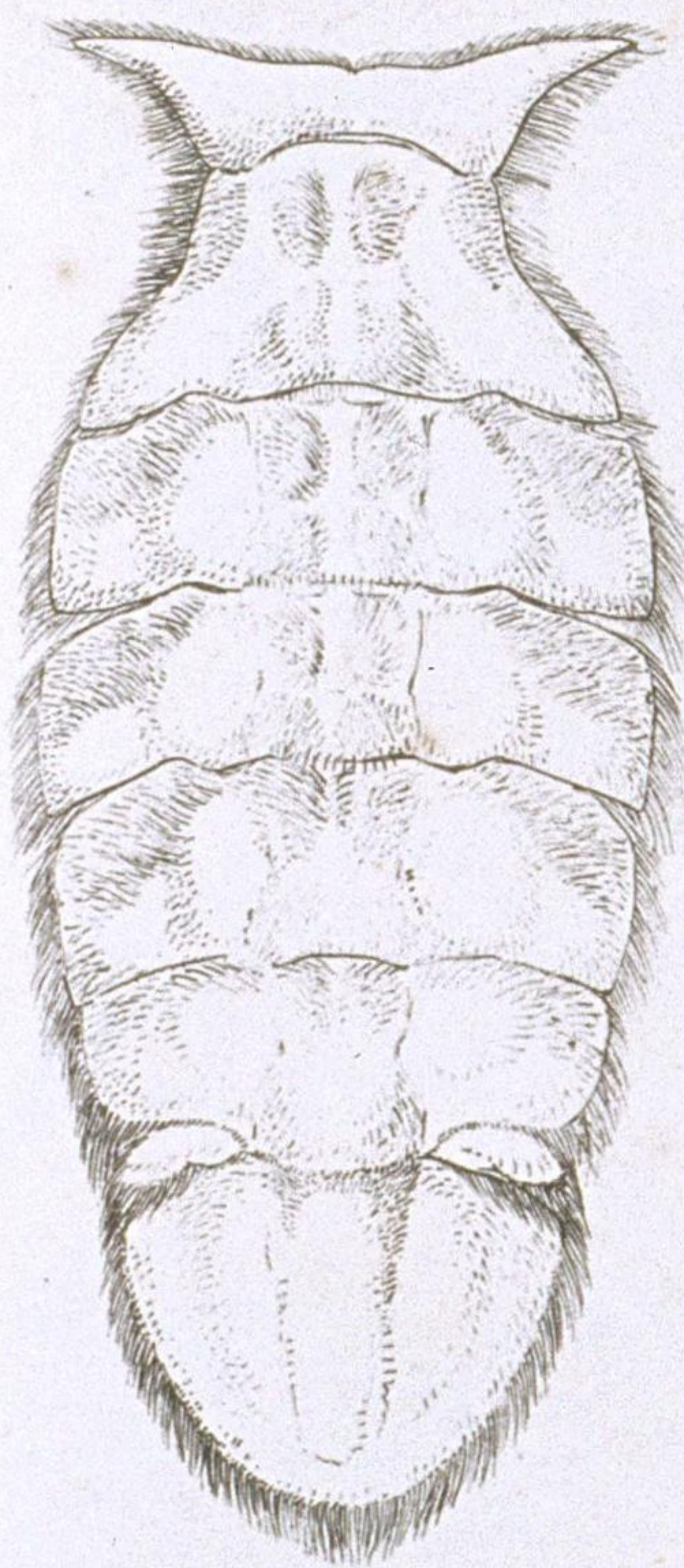
♂



♀

DORIPPE.

1. DORIPPE *callida*, Fabr — 2. DORIPPE *sima*, Edwards. — 3. DORIPPE *quadridens*, Fabr.



DROMIA .

DROMIA Rumphii , Fabr. Edwards . — a. a. Chela et thorax , pilis ademtis .



LEUCOSIDEA.

1. MYRA fugax, Fabr. — 2. LEUCOSIA obtusifrons, n. sp. — 3. L. unidentata, n. sp. — 4. L. longifrons, n. sp.

5. L. rhomboidalis, n. sp. — 6. PHILYRA platycheir, n. sp. — 7. P. pisum, n. sp. — 8. ARCANIA u. spinosa, n. sp.

Mulder del.

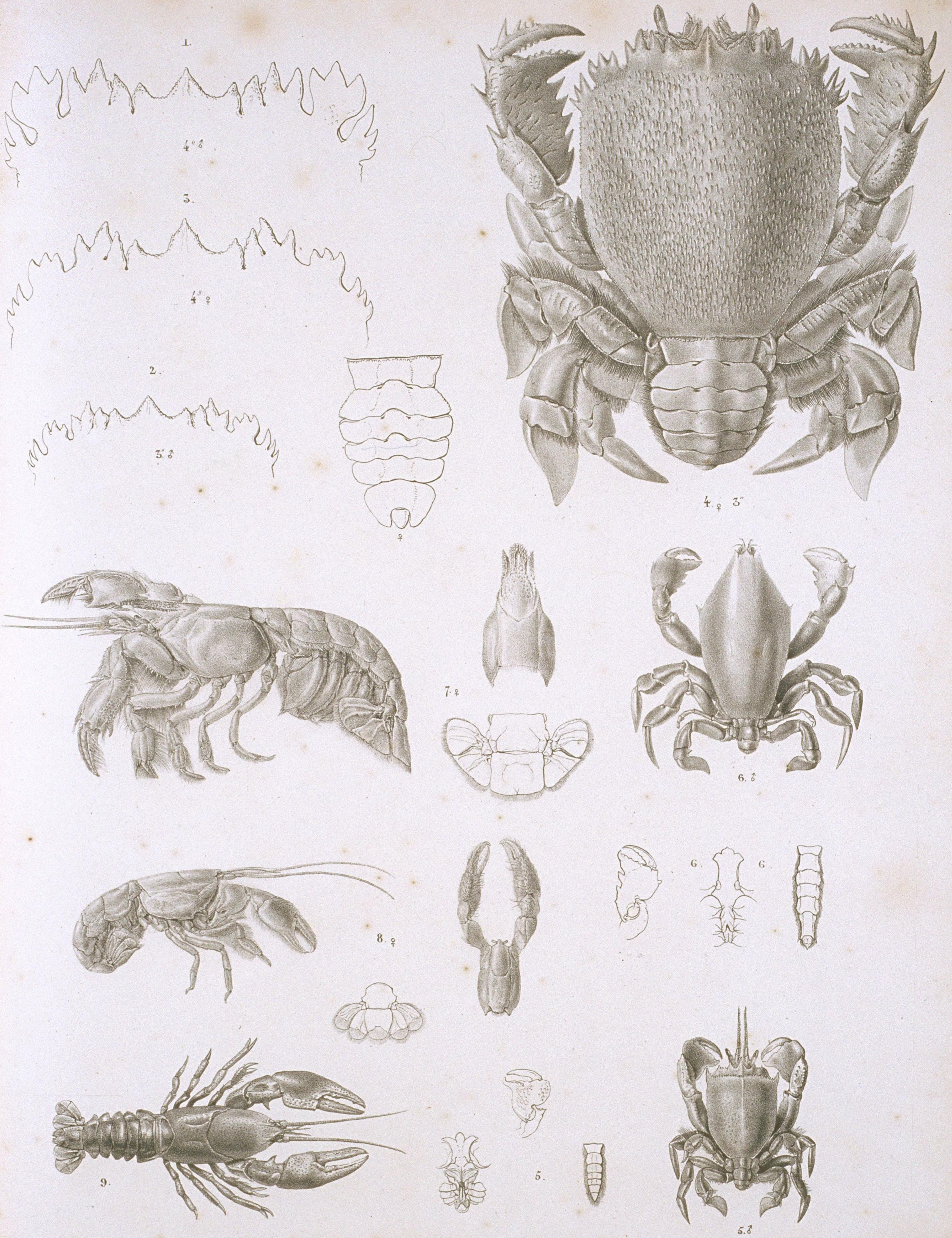
Lith. u. gedr. v. Arnz & Co.



RANINA . *Dentata* . Latr. (Mas. Adult.)

D<sup>r</sup> de S. Mulder in. lap. del.

J. M. Kierdorff lith.



RANINOIDEA . ASTACOIDEA .

1-4 RANINA dentata, Latr. - 5 NOTOPUS dorsipes, Fabr. - 6 LYREIDUS tridentatus, n. sp. - 7 GEBIA major, n. sp.  
 8 LAOMEDIA astacina, n. sp. - 9 ASTACUS japonicus, n. sp.