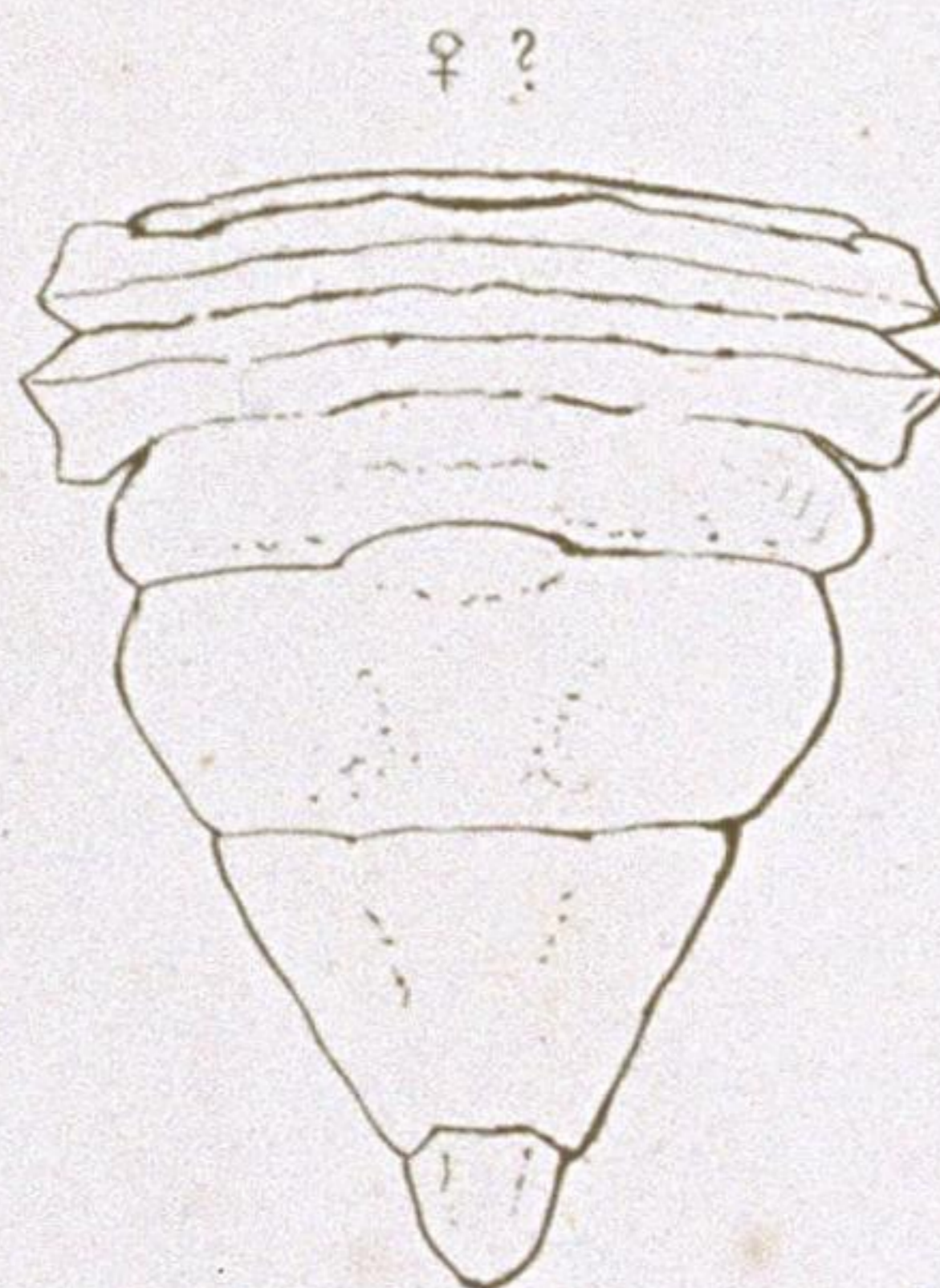
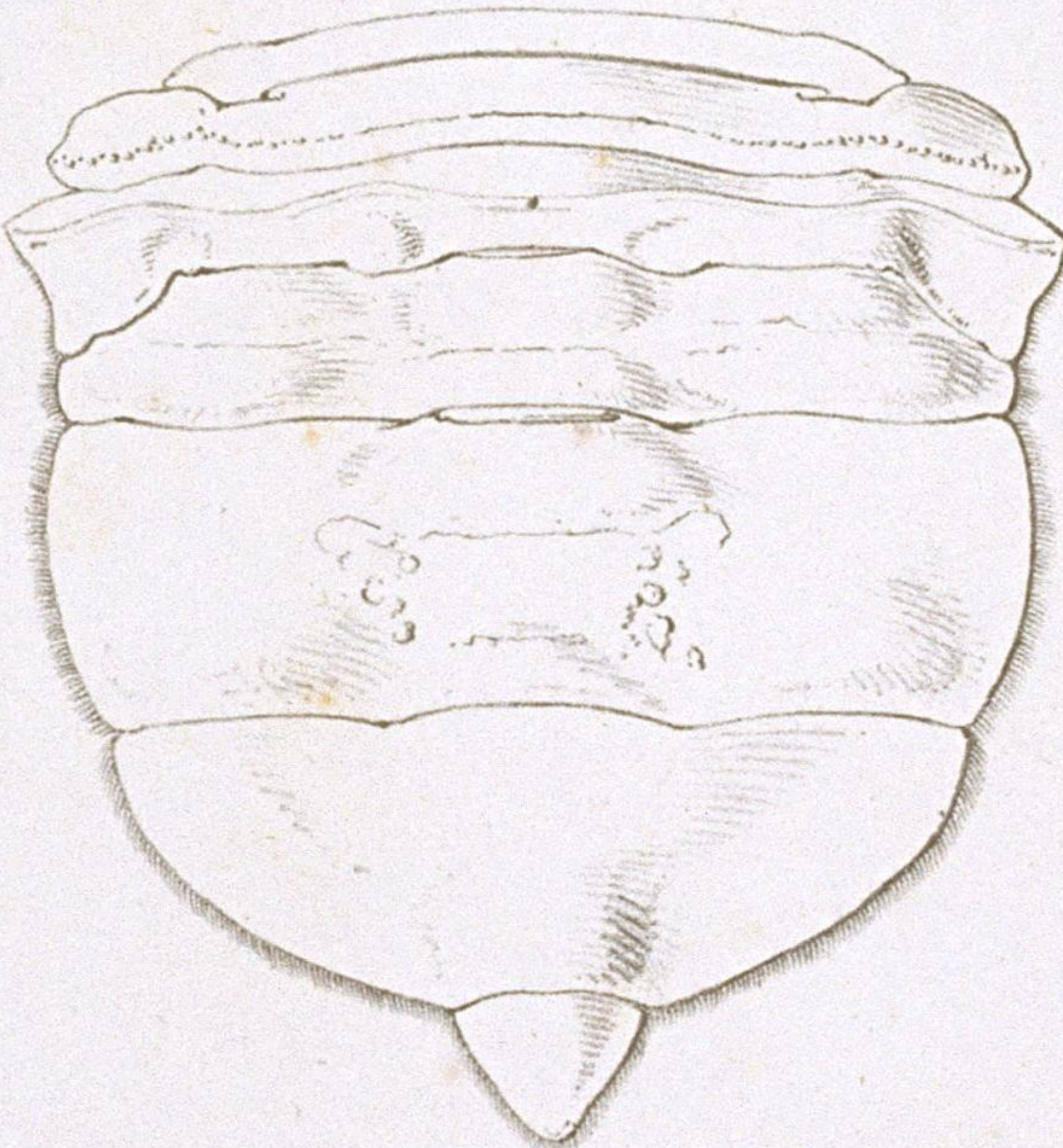


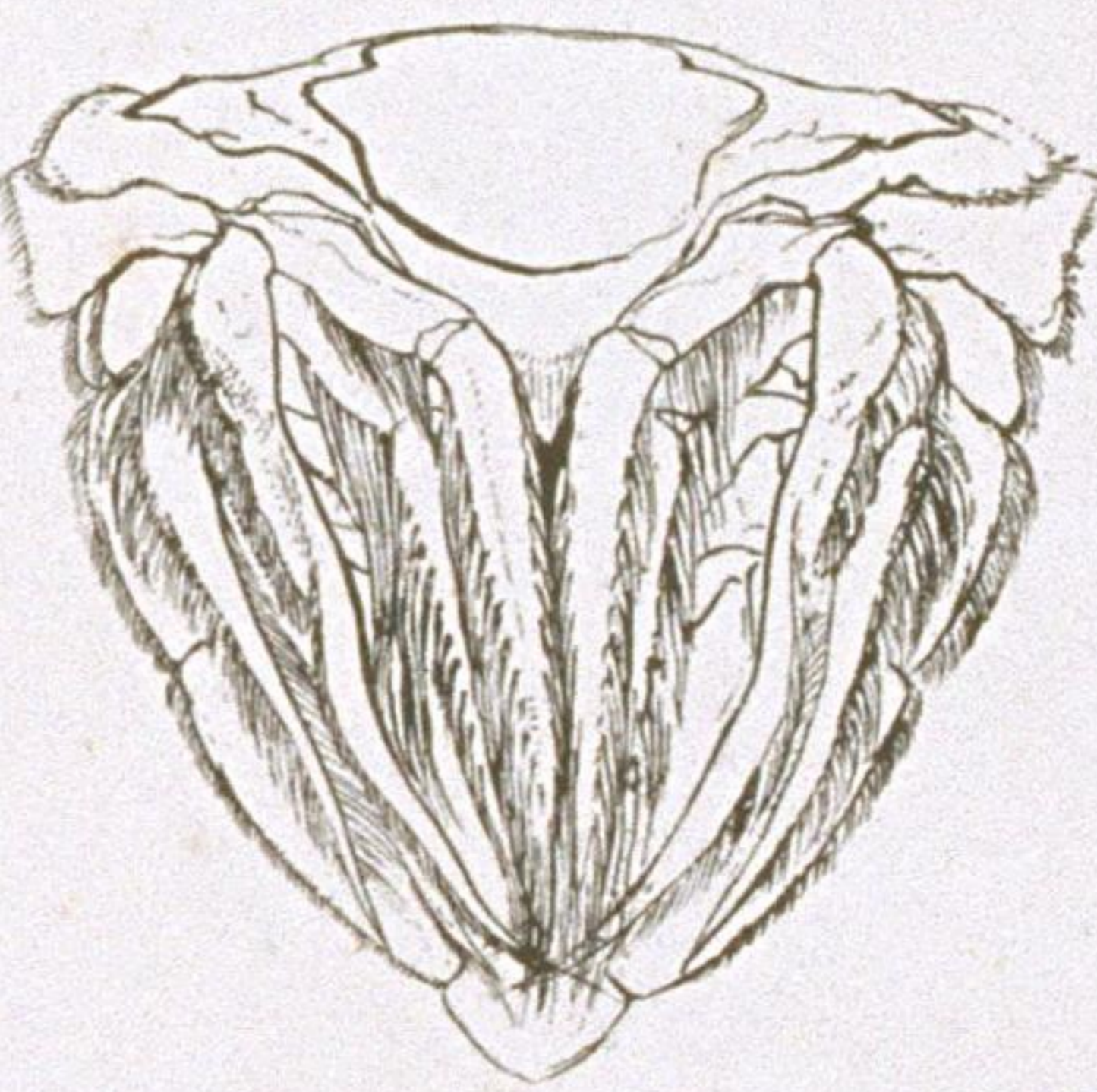
♀



♀ ?



♀ ?



PORTUNUS Fabr.

PORT. (Neptunus) pelagicus Linn.

D^r. Ac. S. Mulder pinxit in lap. del.

Lith. d. Nippon.



1. PORT. (Charybdis) miles n. sp. 2. OCYP. (Helice) tridens n. sp. junior. 3. OCYP. (Scopimera) globosa n. sp. 4. GRAPS. (Pachysoma) bidens n. sp. junior. 5. GRAPS. (Eriocheir)

penicillatus n. sp. 6. HEXAPUS SEXPES Fabr.

Dr. J. S. Mulder pinxit in laq. del.

Lith. d. Nippon.

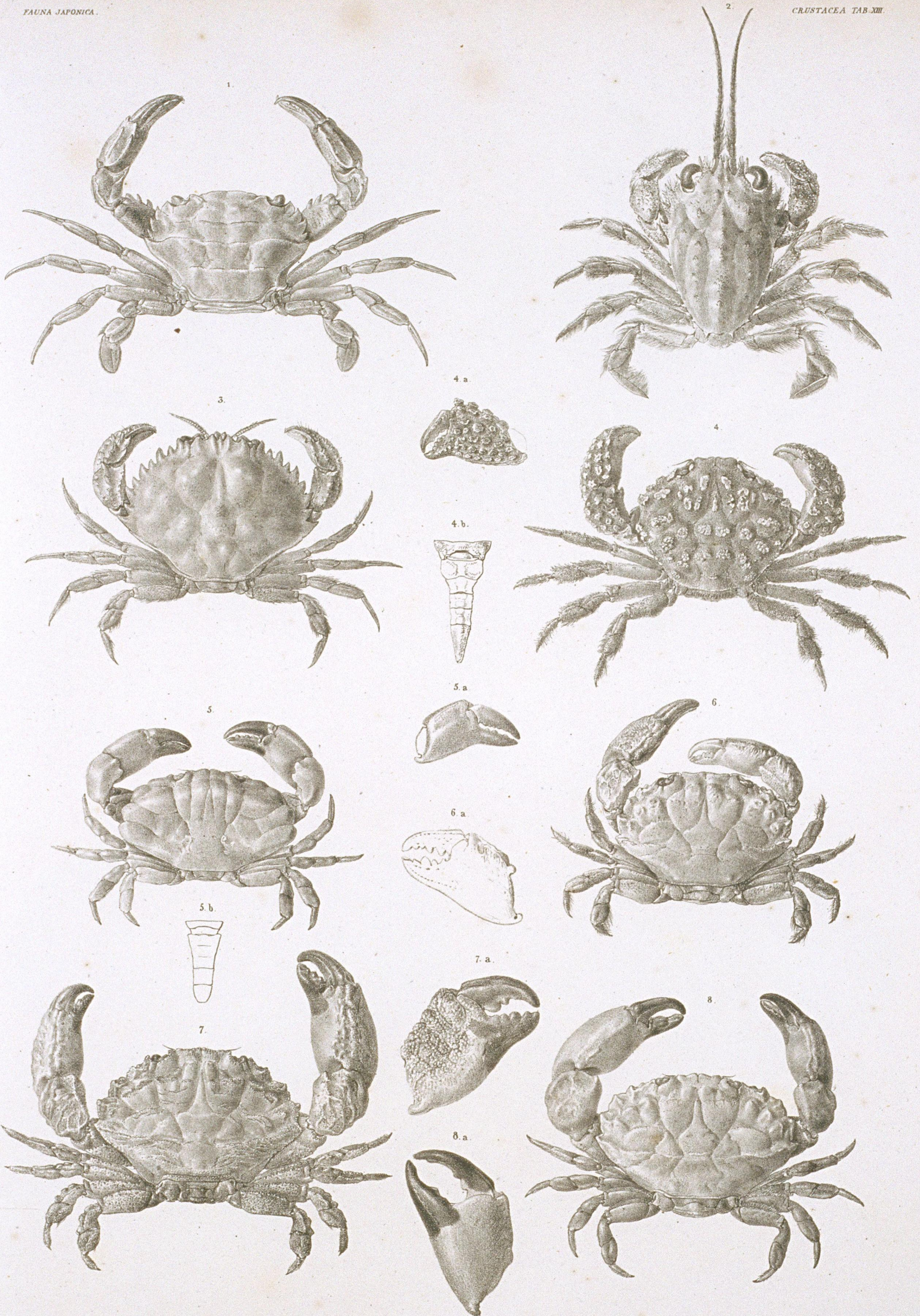


PORTUNUS.

1. PORT. (*Charybdis*) *dentatus* Herbst. 2. PORT. (*Thalamita*) *Bymna* Herbst 3. PORT. (*Thalamita*) *truncatus* Fabr.

D^r At S. Mulder ad nat. pinx. et in lap. del.

Lith. d. Nijpon.

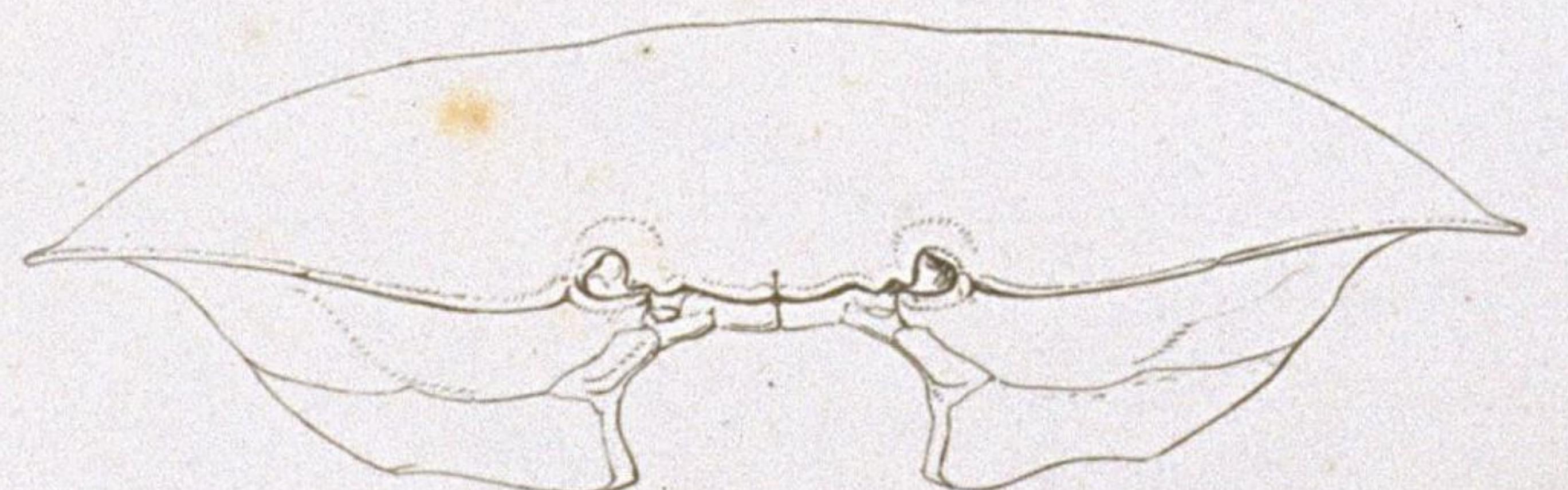
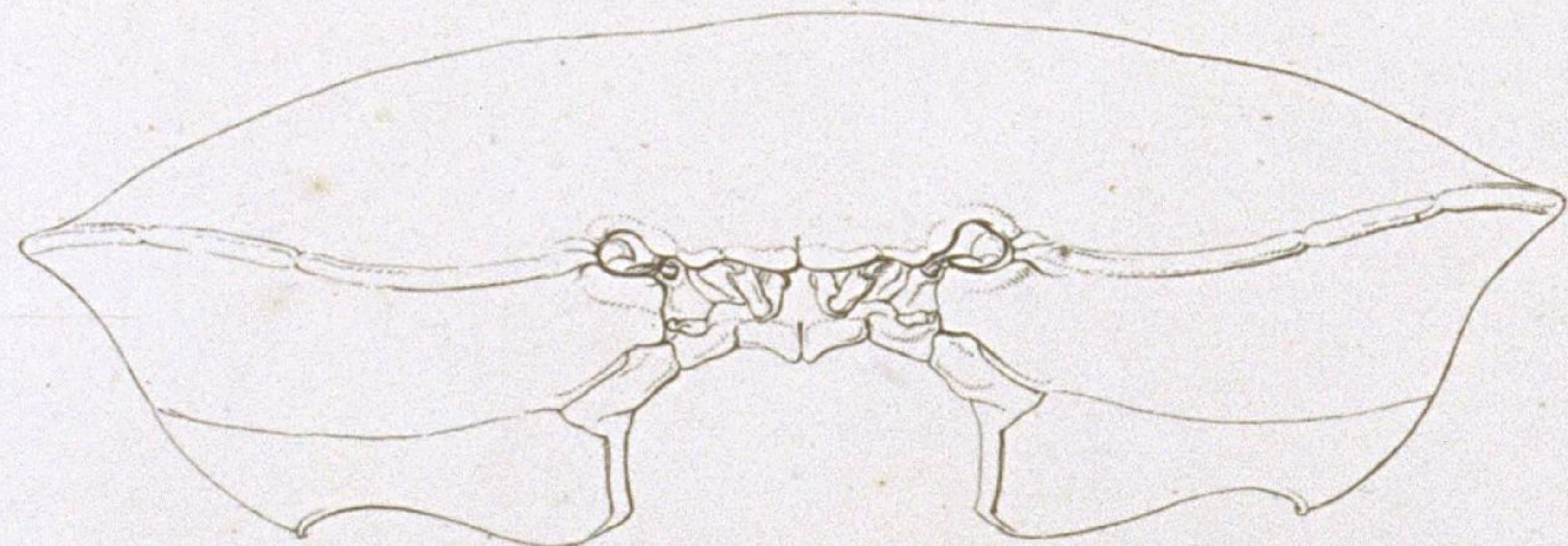
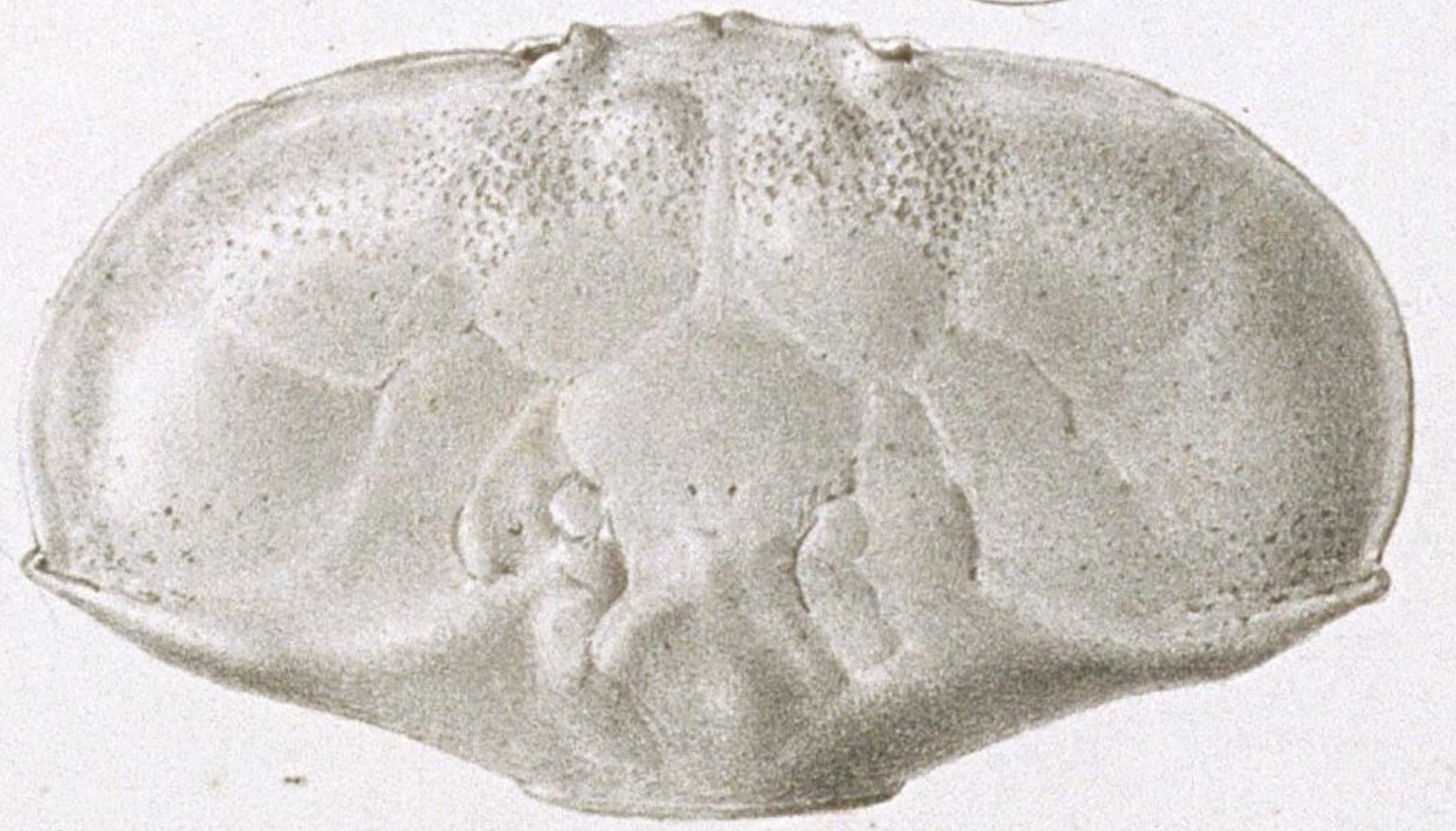
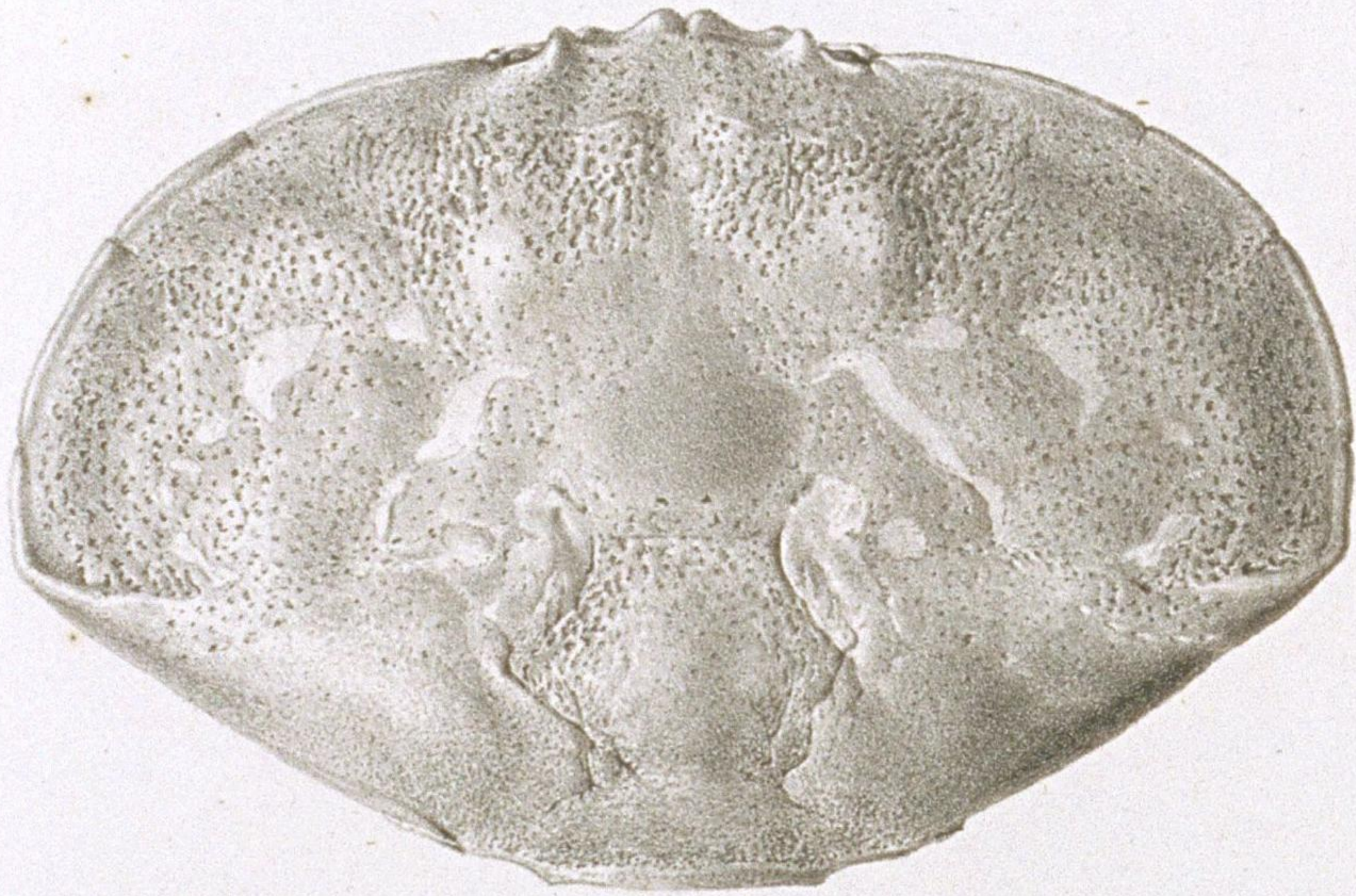
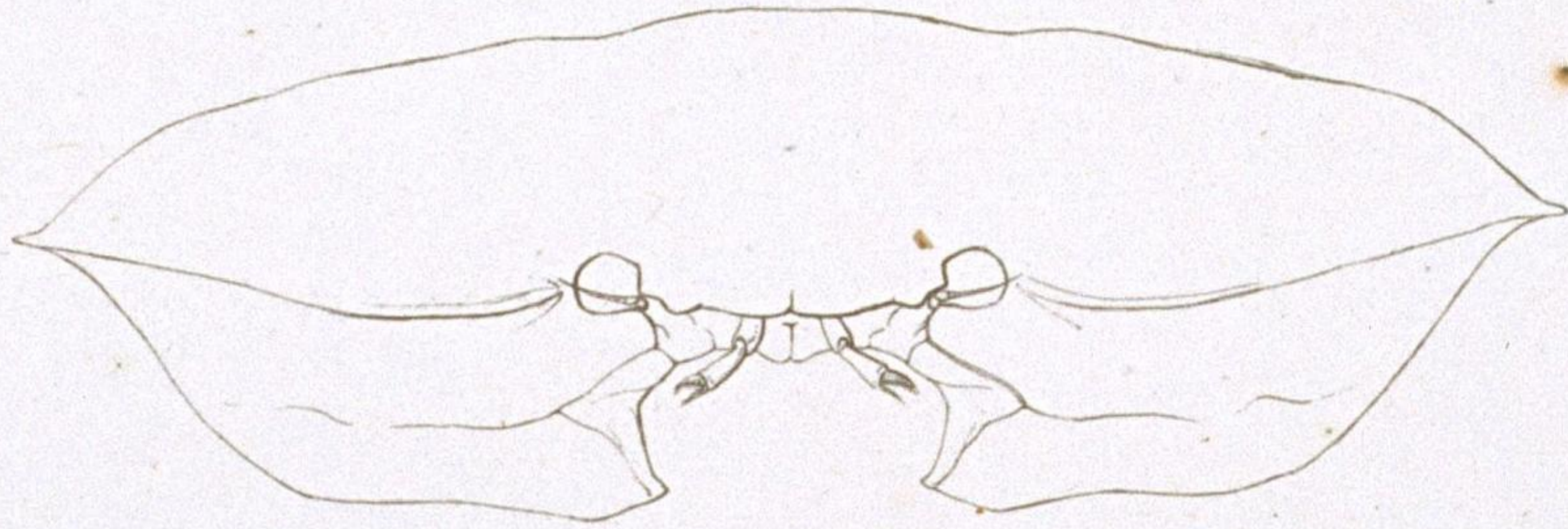


PORTUNUS CORYSTES CANCER.

1. PORT. (Thalamita) arcuatus n. sp. 2. COR. (Ocidea) distincta n. sp. 3. COR. (Trichocera) gibbosula n. sp. 4. CANC. (Halimede) fragifer n. sp.
 5. CANC. (Xantho) obtusus n. sp. 6. CANC. (Xantho) lividus n. sp. 7. CANC. (Xantho) distinguendus n. sp. 8. CANC. (Xantho) affinis n. sp.

Dr. A. S. Mulder pinx. et in lap. del.

Lith. de Nippon.

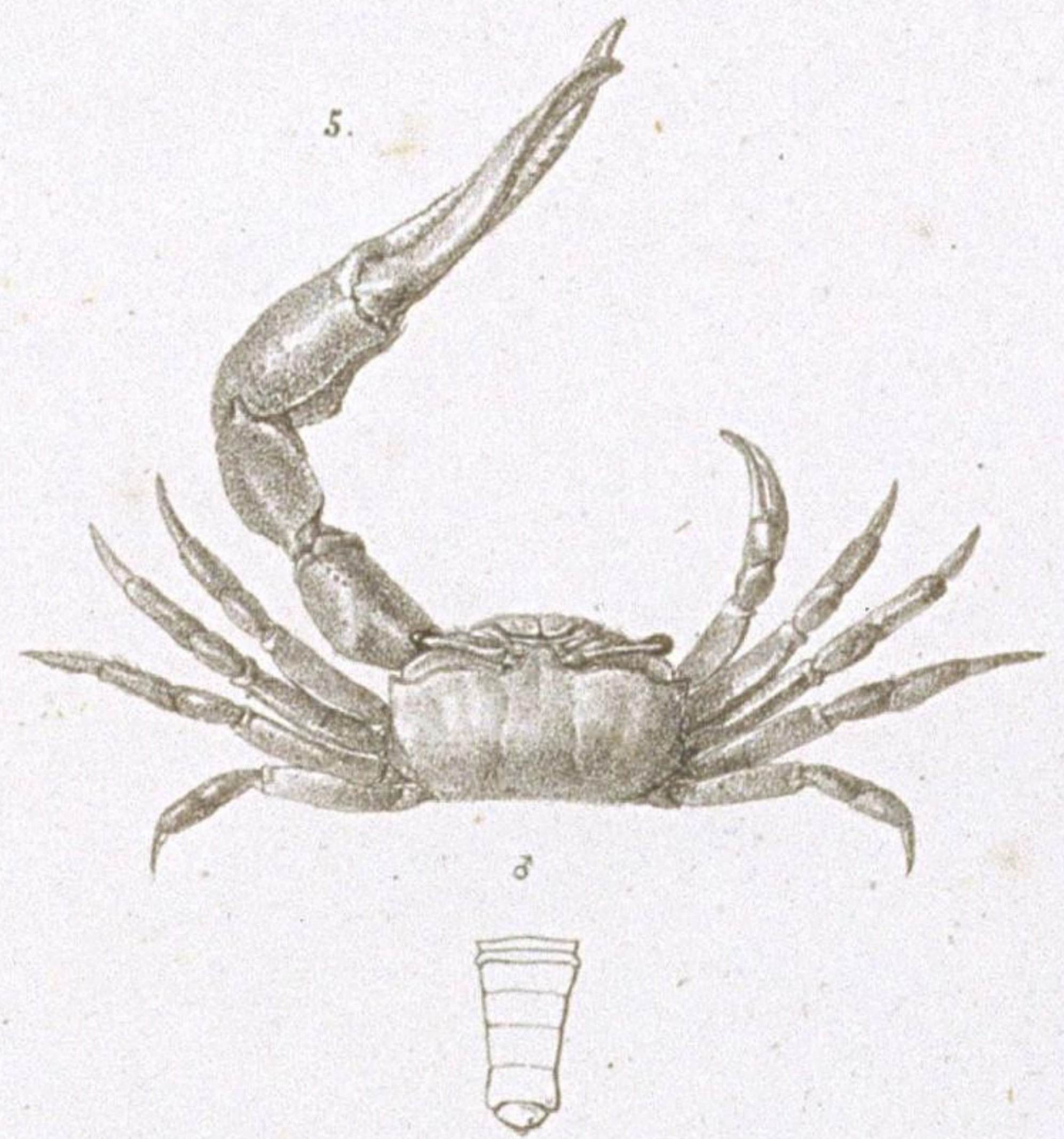
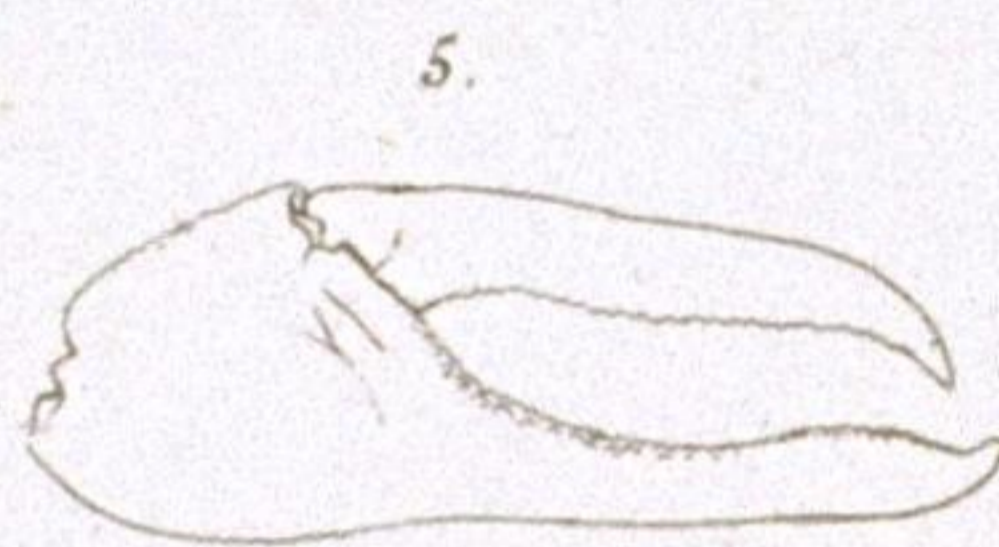
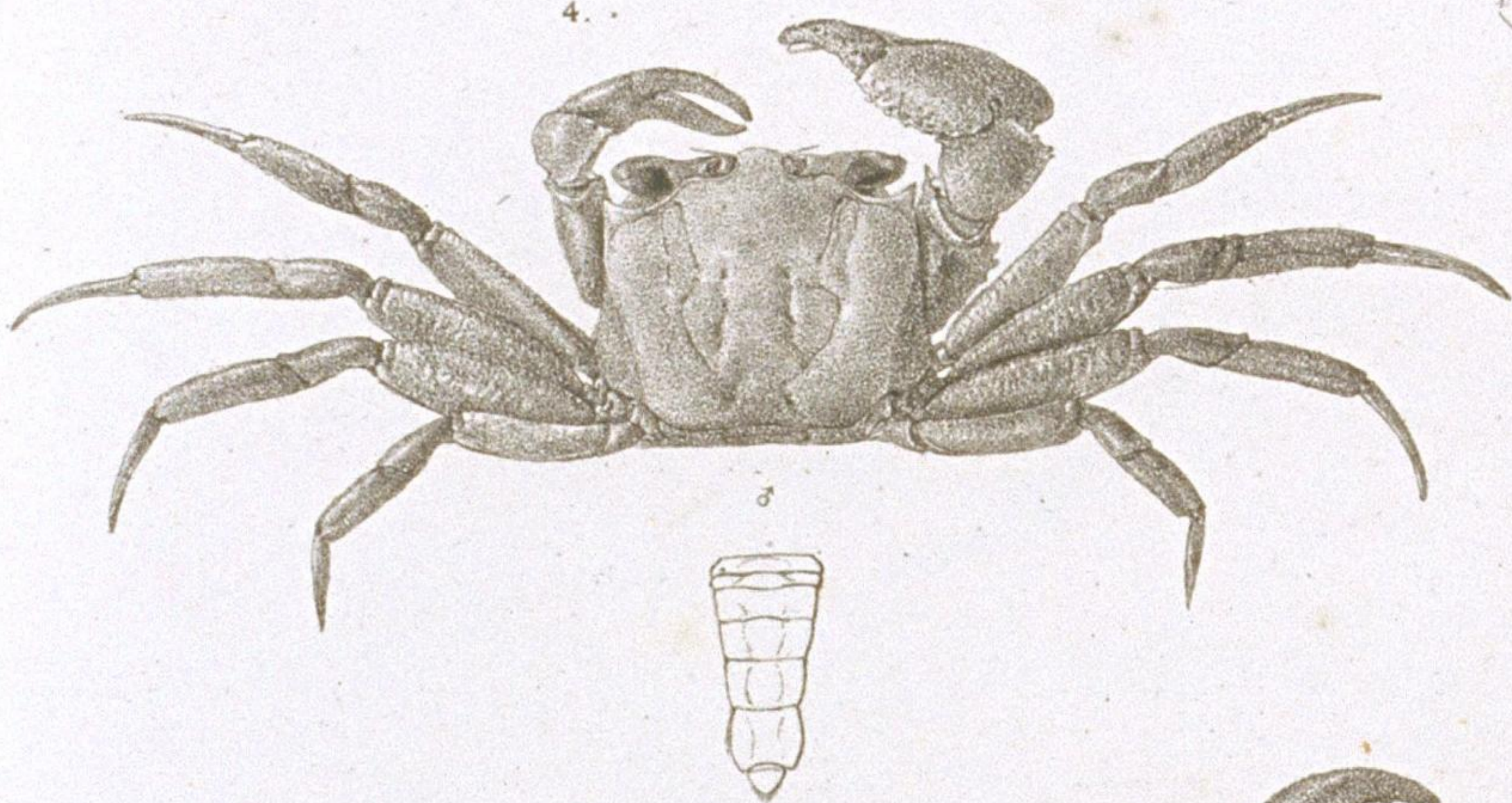
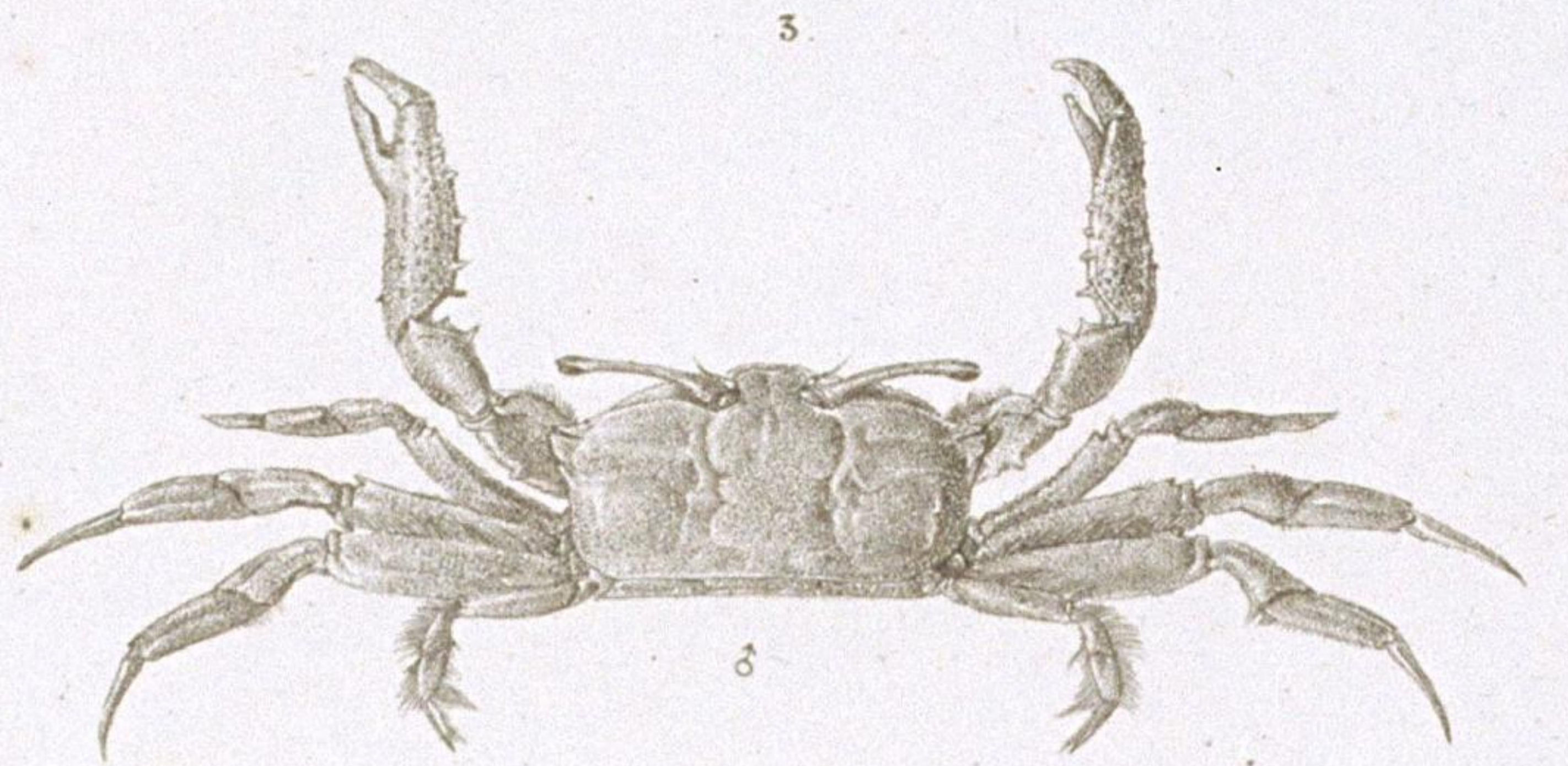
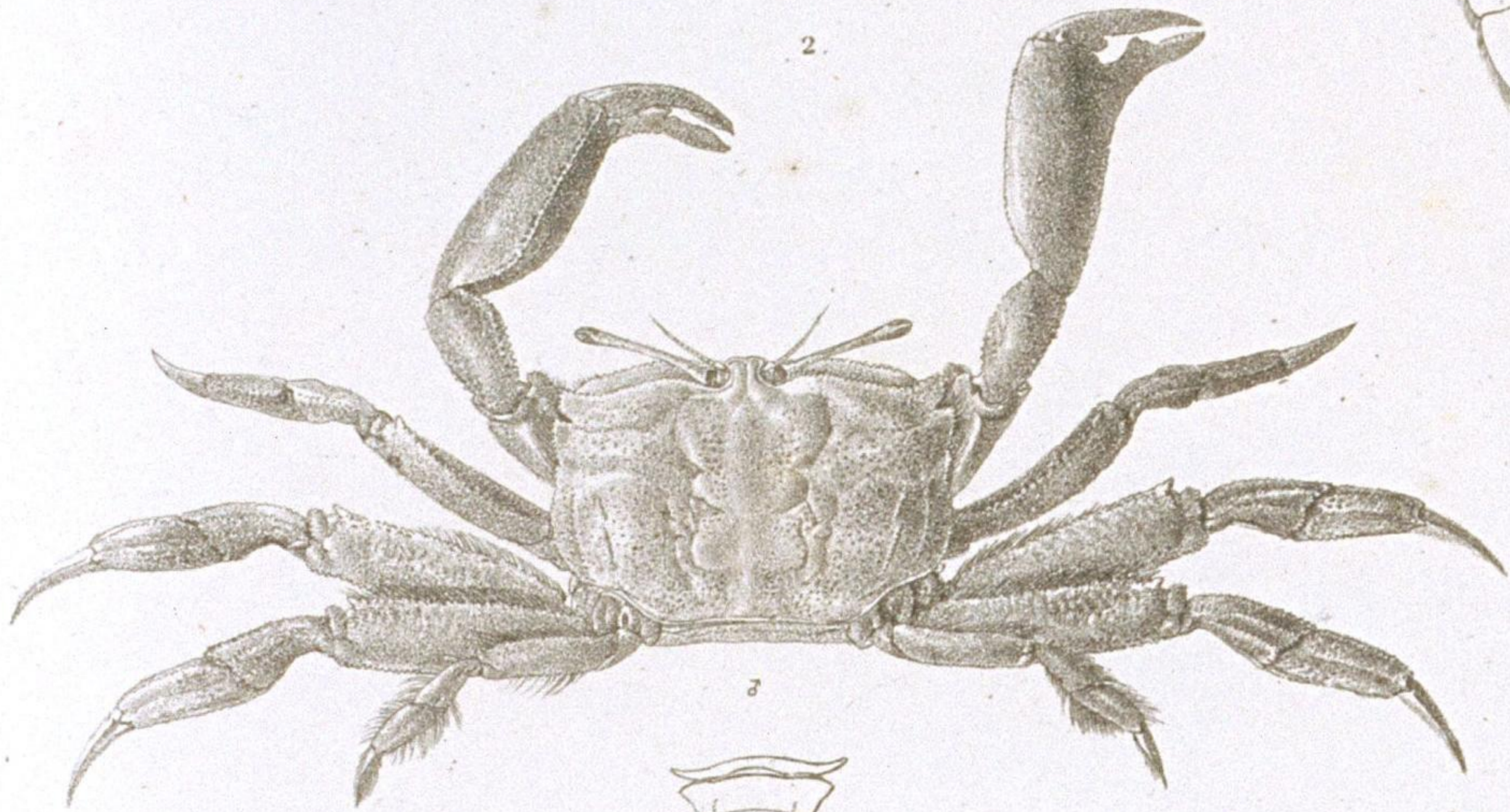
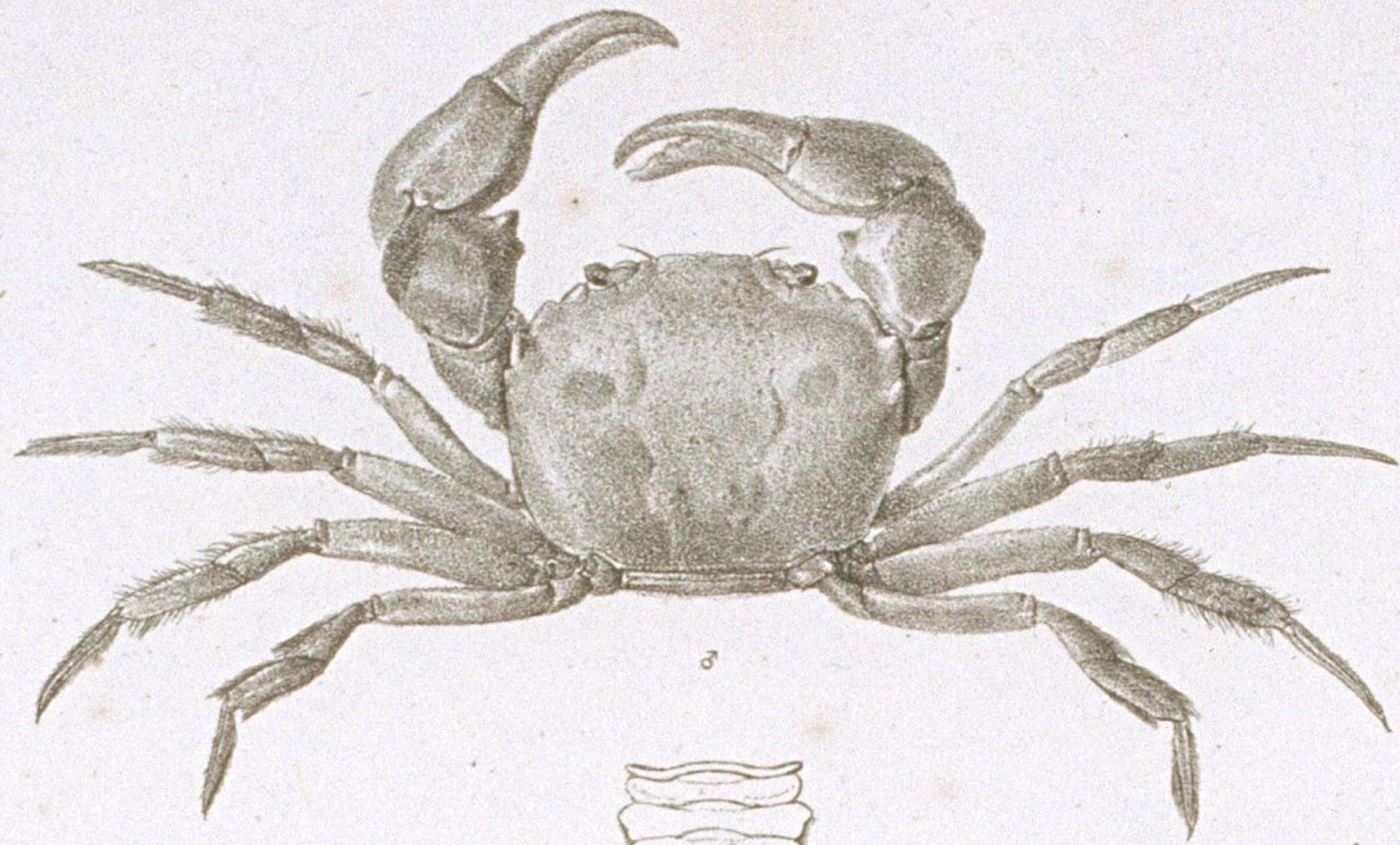


CANCER Fabr.

Lith. de Nippon.

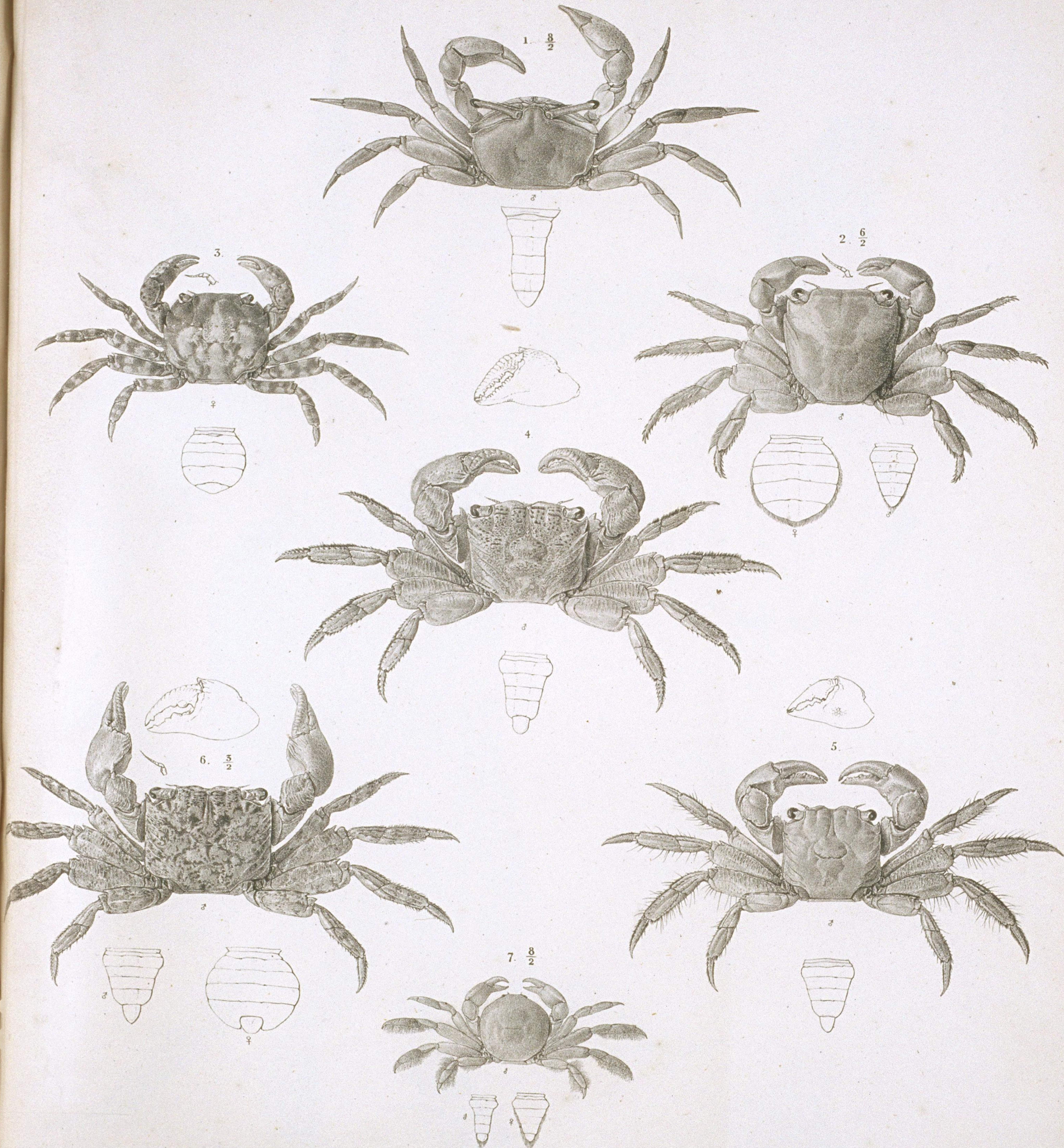
D^r. de S. Mulder pinx. in lap. del.

1. CANC. (Atergatis) integerrimus Lamarch. 2. CANC. (Atergatis) dilatatus n. sp. 3. CANC. (Atergatis) frontalis n. sp.



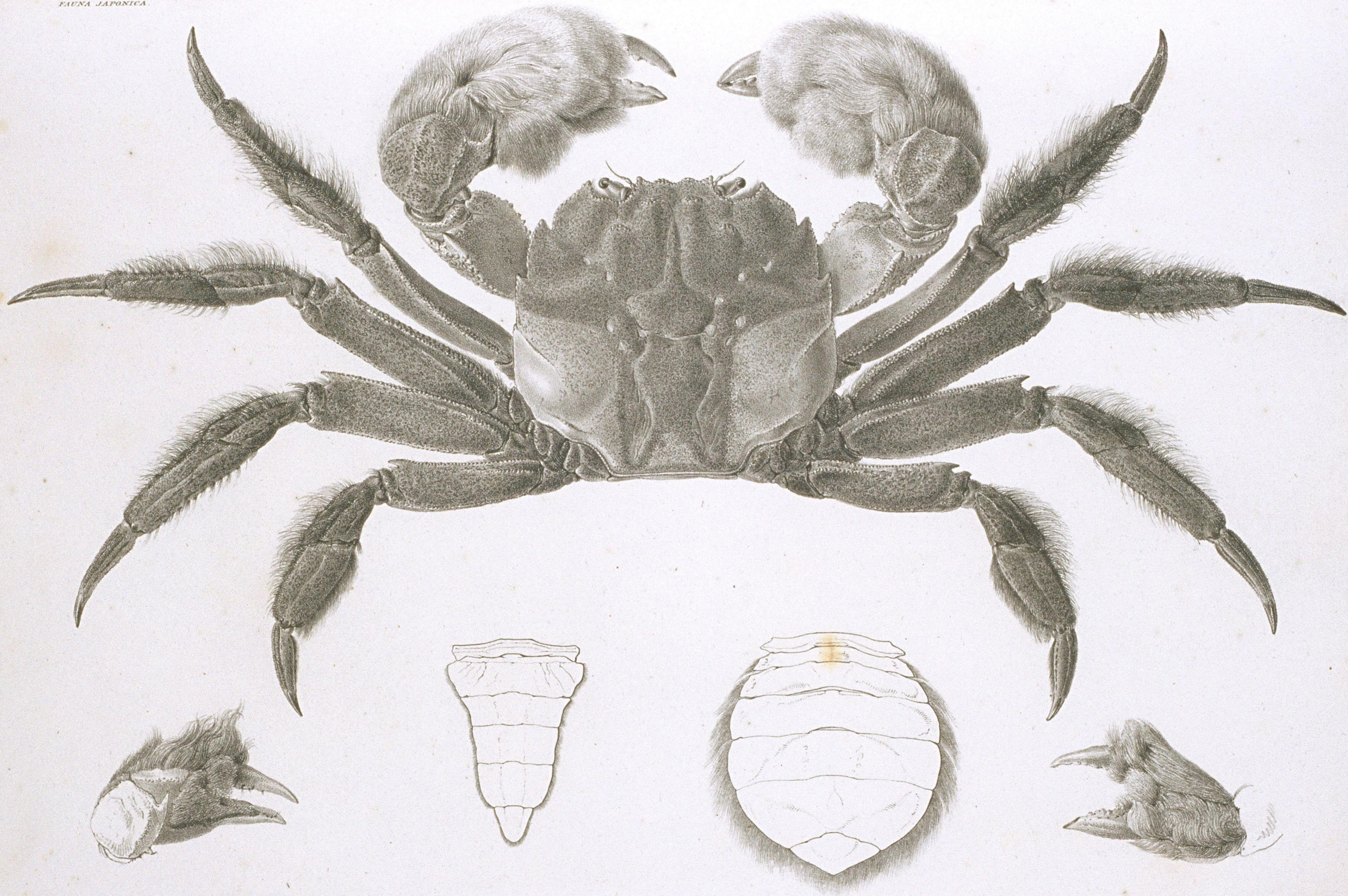
CANCER ET OCYPODE.

1. CANC. (Eucrate) crenatus n. 2. OCYP. (Macrophthalmus) japonica n. 3. OCYP. (Macrophthalmus) dilatata n.
 4. OCYP. (Ocypode) cordimana Latr. 5. OCYP. (Gelasimus) lactea n. 6. OCYP. (Helice) tridens n.



OCYPODE GRAPSUS . PINNOTHERES .

1. OCYP. (Cleistostoma) pusilla. n. 2. GRAPS. (Grapsus) pusillus n. 3. GRAPS. (Grapsus) sanguineus n. 4. GRAPS. (Pachysoma) bidens Fabr.
 5. GRAPS. (Pachysoma) intermedius n. 6. GRAPS. (Pachysoma) pictus n. 7. PINNOTHERES Pholadis. n.



GRAPSUS.

GRAPSUS (Eriocheir) Japonicus n. sp.