

Fig. 32. *Somanniathelphusa chiangmai* spec. nov., holotype, ♂ (44.0 by 33.3 mm) (RMNH D 42347). A, dorsal view; B, frontal view; C, ventral view.

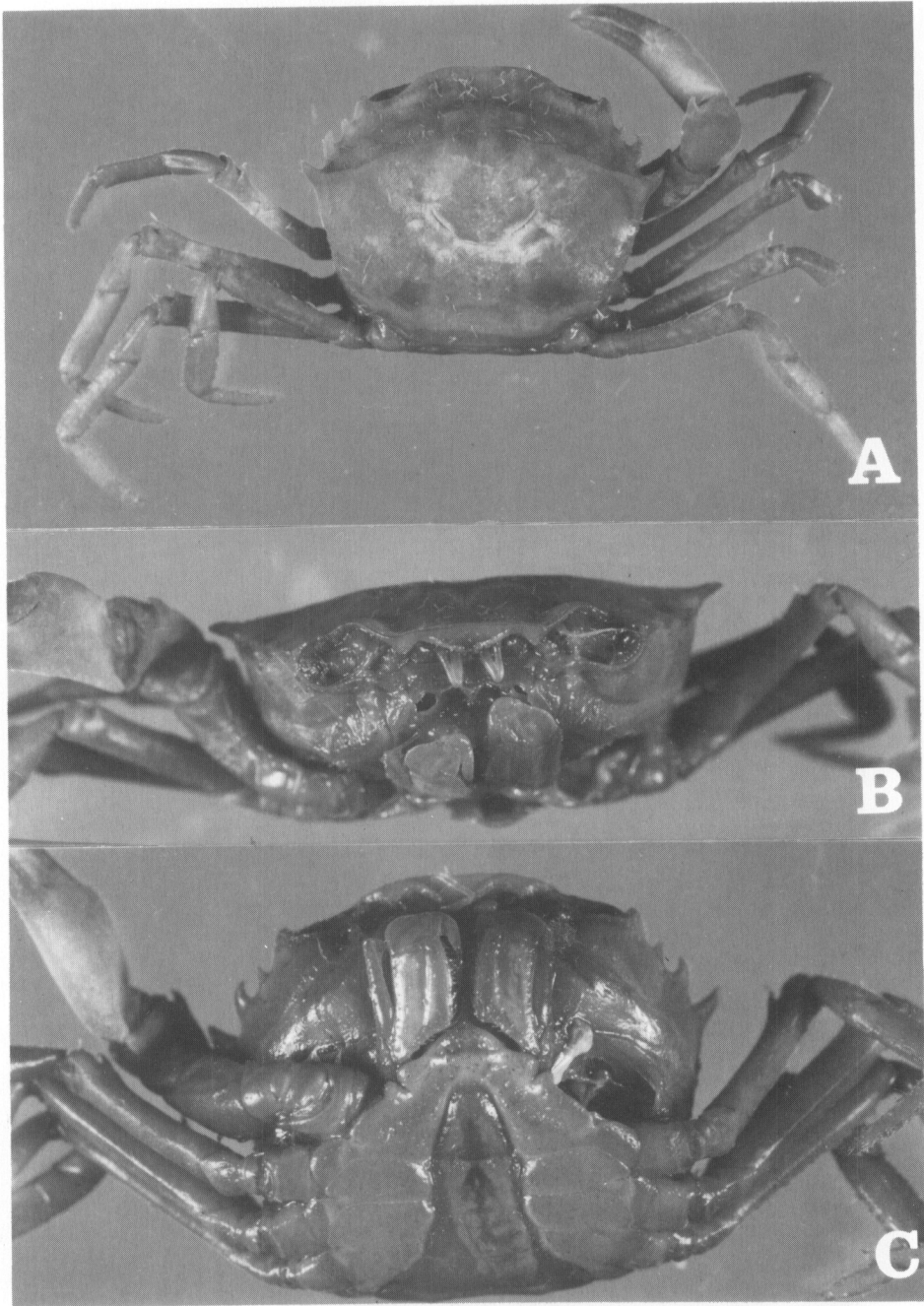


Fig. 33. *Heterothelphusa beauvoisi* (Rathbun, 1902), σ , (17.2 by 14.3 mm) (ZRC 1991.1888). A, dorsal view; B, frontal view; C, ventral view.

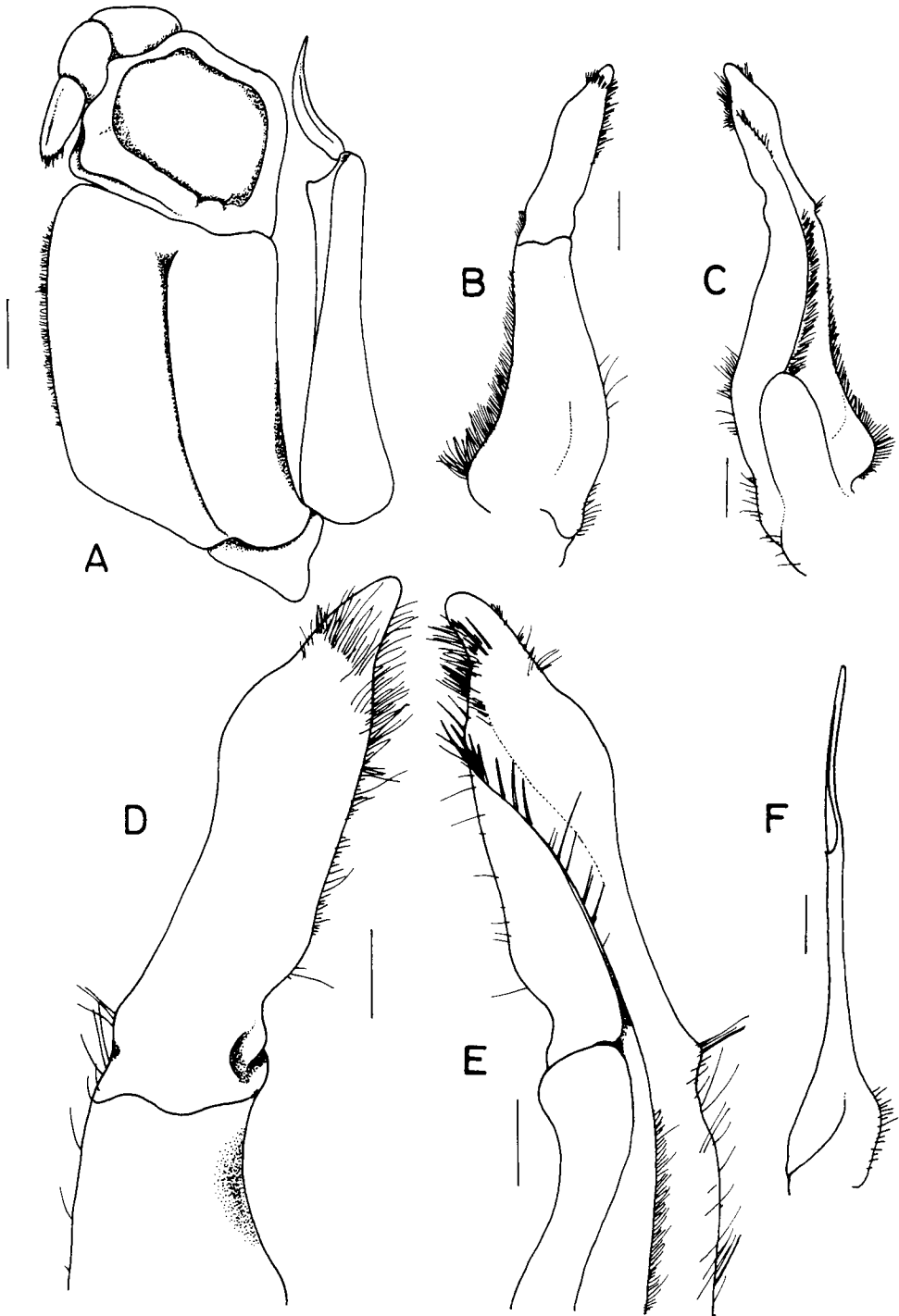


Fig. 34. *Potamon kanchanaburiense* Naiyanetr, 1992, holotype, ♂ (62.4 by 47.7 mm) (RMNH D 42352). A, left third maxilliped; B-E, right G1; F, right G2. B, D, dorsal view; C, E, ventral view; D, E, G1 terminal segment. Scales: A-C, F, 2.0 mm; D, E, 1.0 mm.

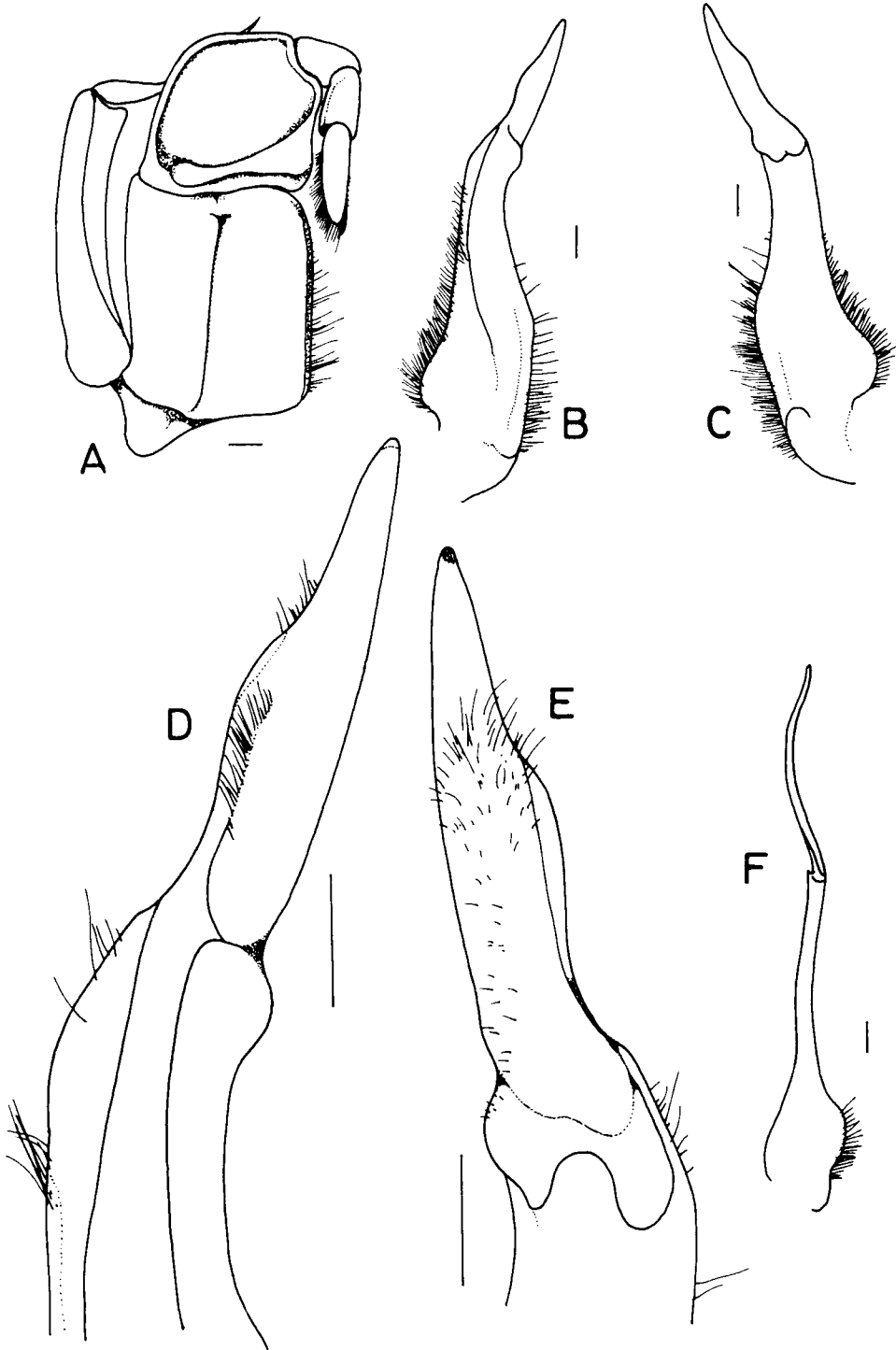


Fig. 35. *Polamon maesotense* Naiyanetr, 1992, holotype, ♂ (46.4 by 35.3 mm) (ZRC 1991.1836). A, right third maxilliped; B-E, left G1; F, left G2. B, D, ventral view; C, E, dorsal view; D, E, G1 terminal segment. Scales: 1.0 mm.

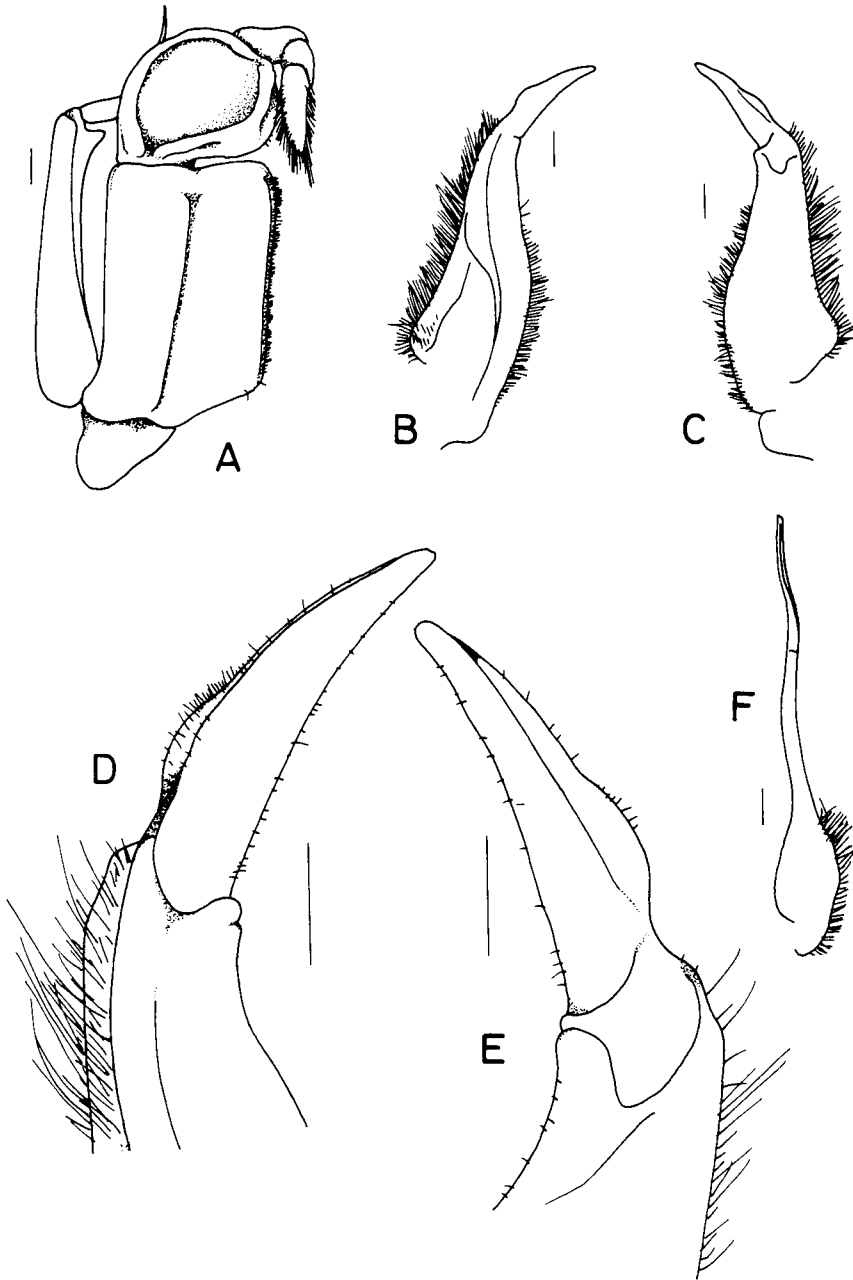


Fig. 36. *Potamon boonyaratae* (Naiyanetr, 1987), paratype, σ (46.1 by 37.2 mm) (ZRC 1991.1859). A, right third maxilliped; B-E, left G1; F, left G2. B, D, ventral view; C, E, dorsal view; D, E, G1 terminal segment. Scales: 1.0 mm.

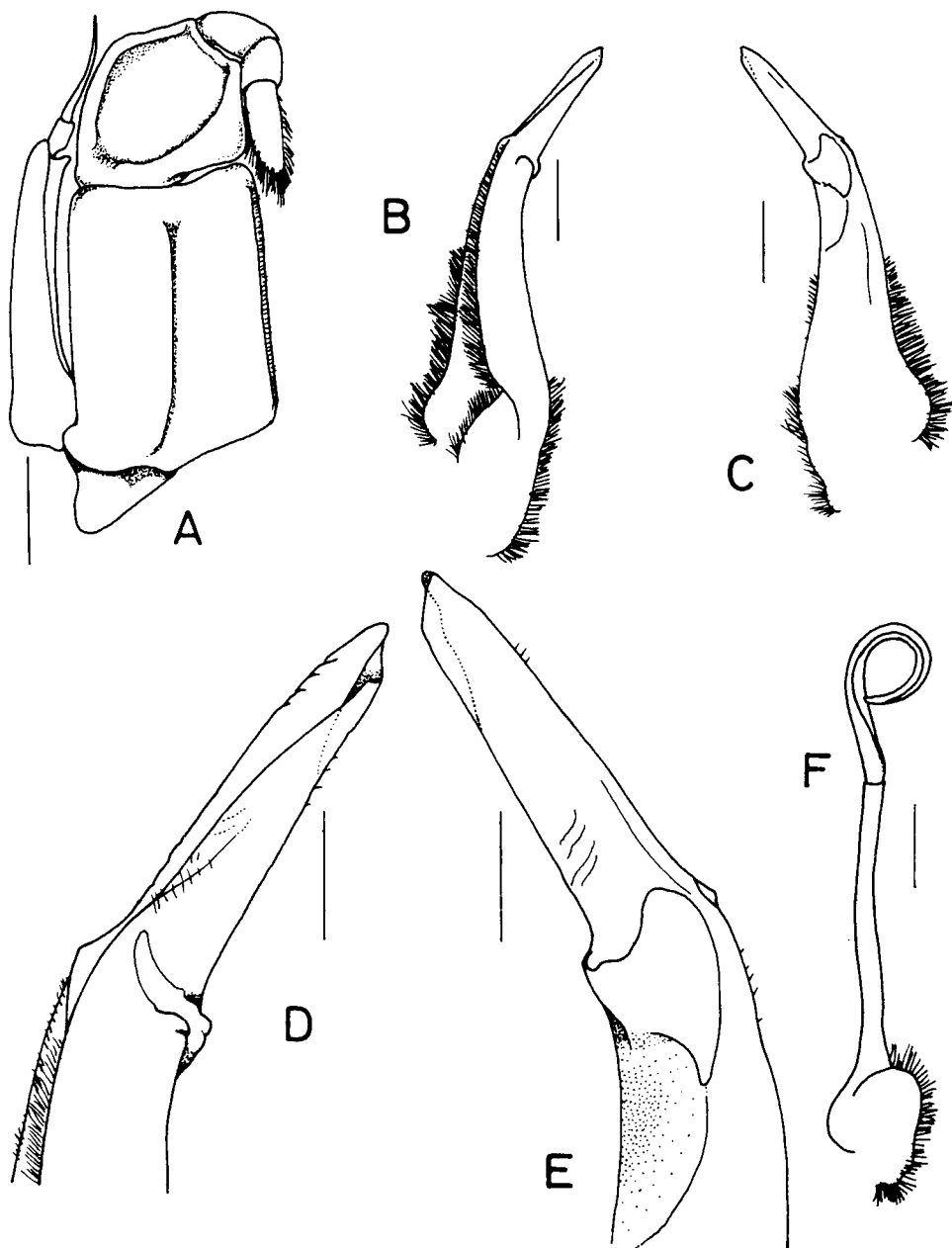


Fig. 37. *Potamon namlang* spec. nov., holotype, ♂ (44.5 by 35.0 mm) (MP). A, right third maxilliped; B-E, left G1; F, left G2. B, D, ventral view; C, E, dorsal view; D, E, G1 terminal segment. Scales: 2.0 mm.

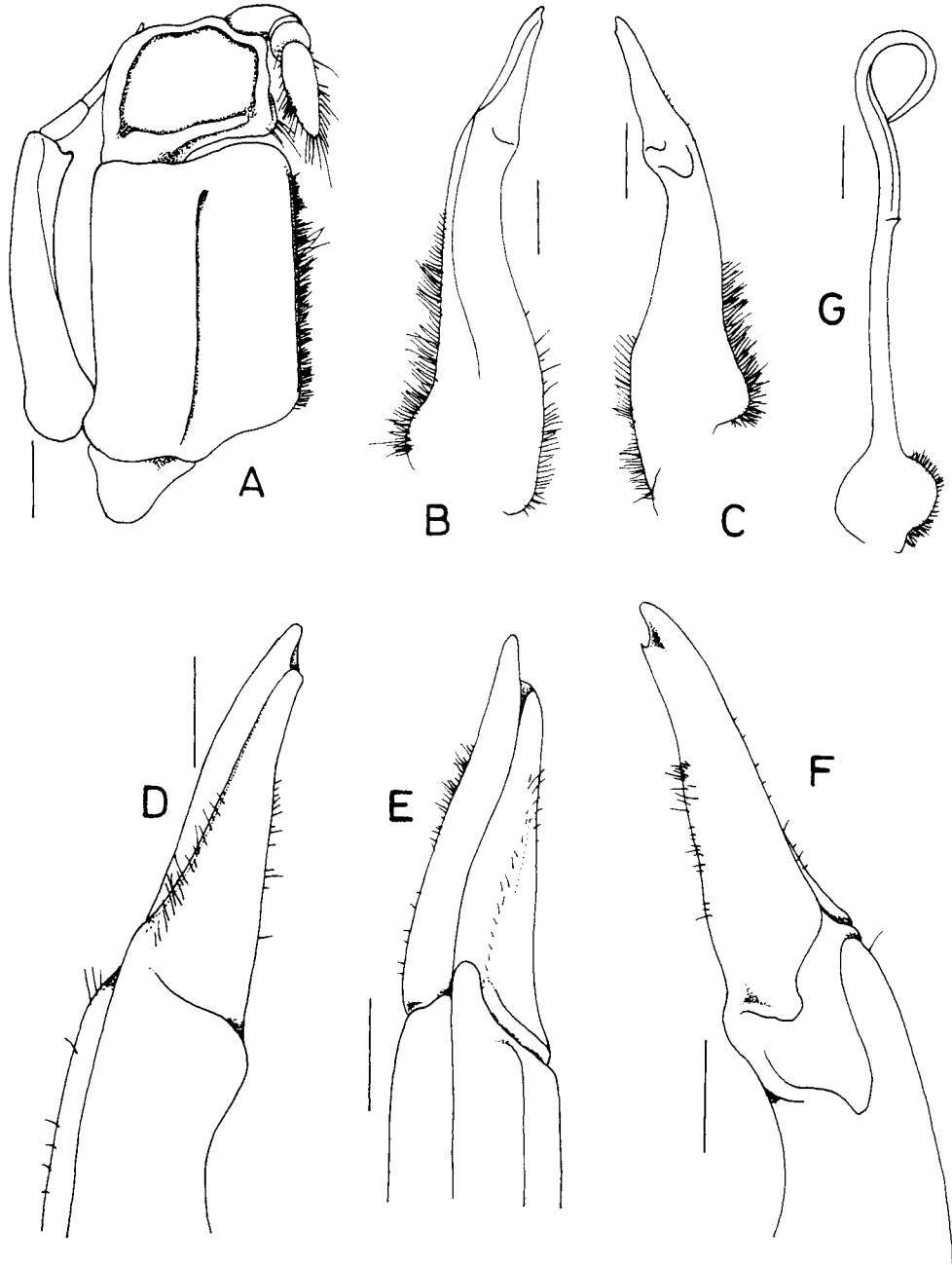


Fig. 38. *Potamon jarujini* spec. nov., holotype, ♂ (50.0 by 38.5 mm) (RMNH D 42344). A, right third maxilliped; B-F, left G1; G, left G2. B, D, ventral view; E, dorsomarginal view; C, F, dorsal view; D-F, G1 terminal segment. Scales: A-C, G, 2.0 mm; D-F, 1.0 mm.

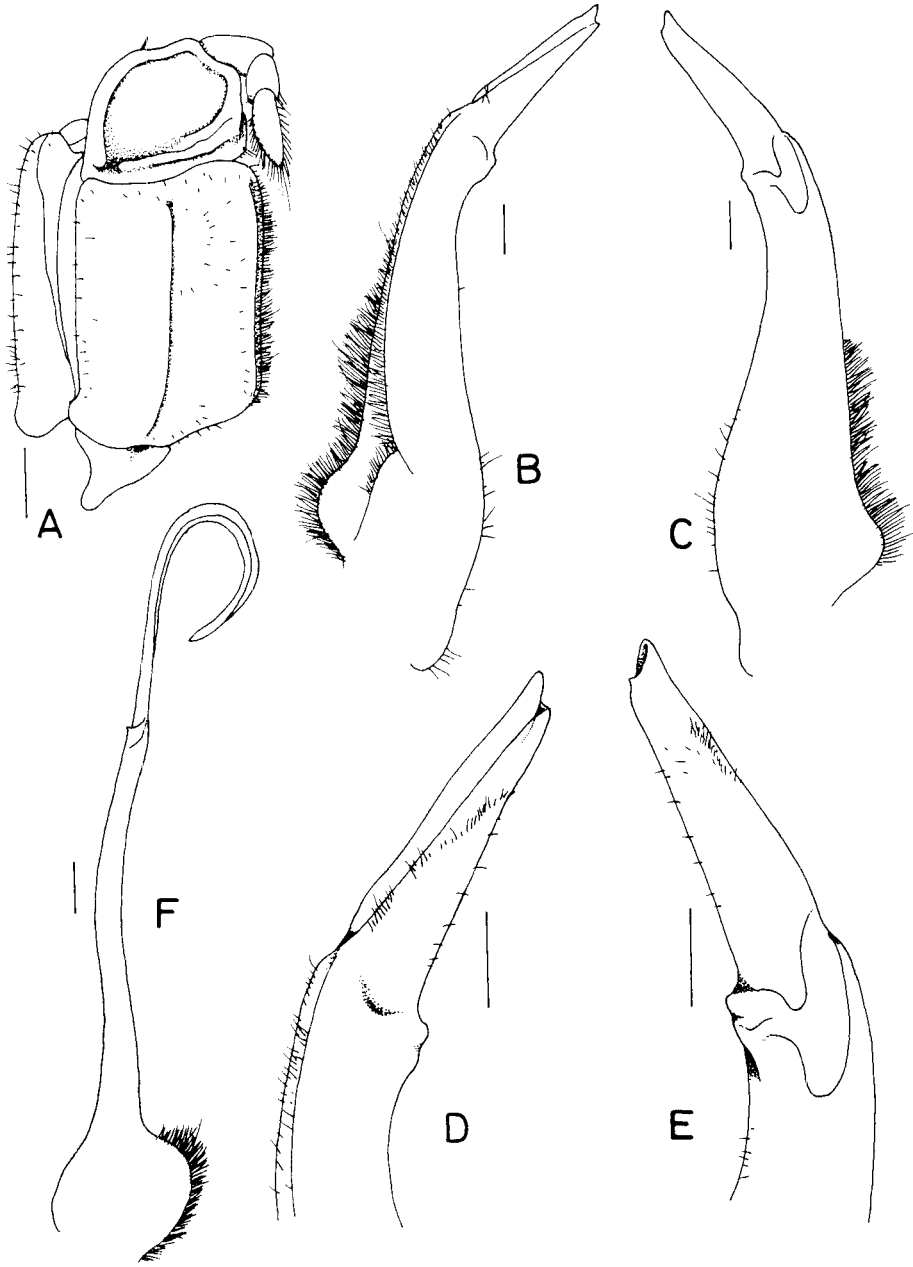


Fig. 39. *Potamon maesariang* spec. nov., holotype, ♂ (47.0 by 36.0 mm) (RMNH D 42343). A, right third maxilliped; B-E, left G1; F, left G2. B, D, ventral view; C, E, dorsal view; G1 terminal segment. Scales: A, 2.0 mm, B-F, 1.0 mm.

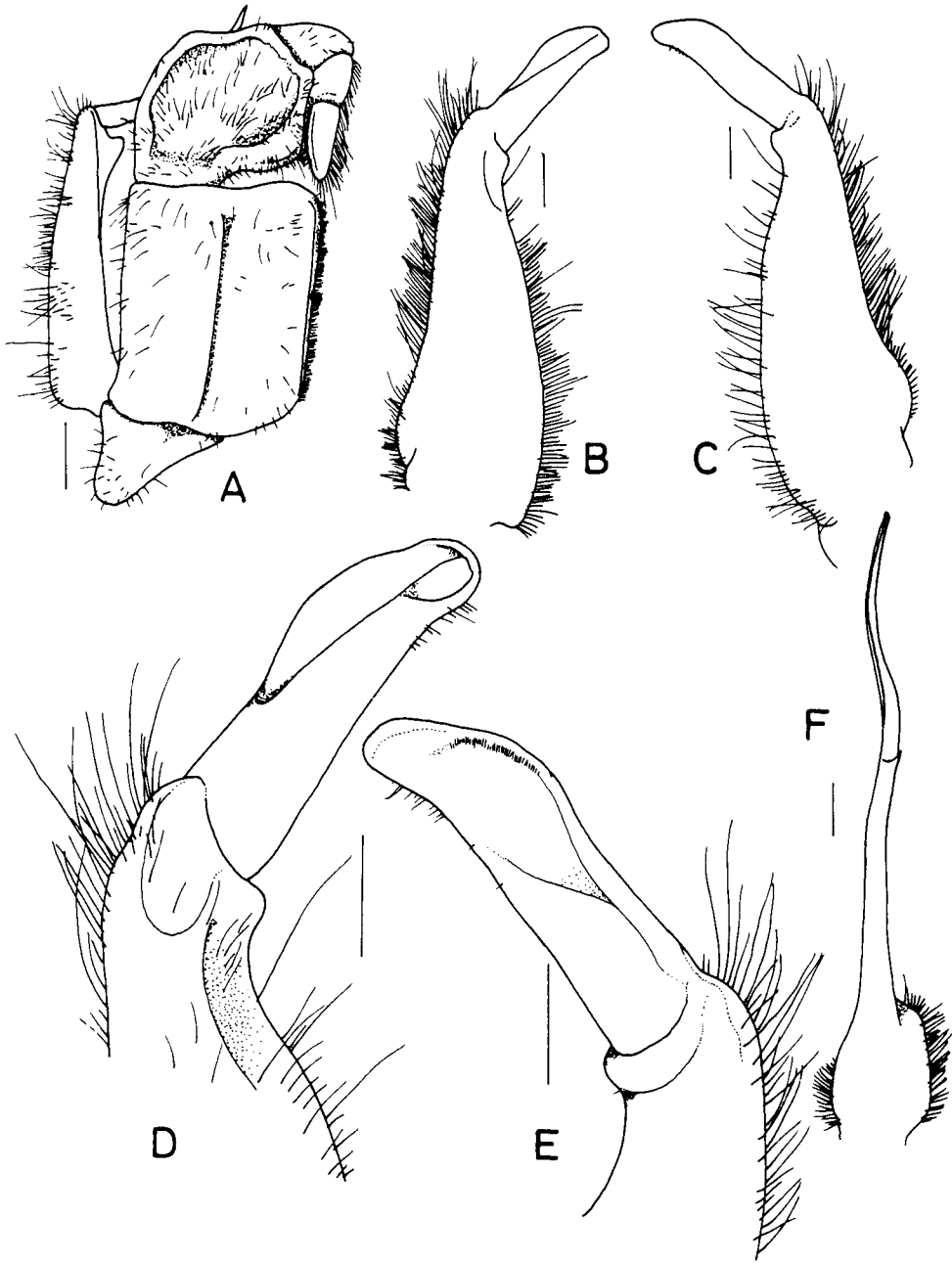


Fig. 40. *Potamon ubon* spec. nov., holotype, ♂ (49.0 by 39.0 mm) (RMNH D 42349). A, right third maxilliped; B-E, left G1; F, left G2. B, D, ventral view; C, E, dorsal view; D, E, G1 terminal segment. Scales: A, 2.0 mm; B-F, 1.0 mm.

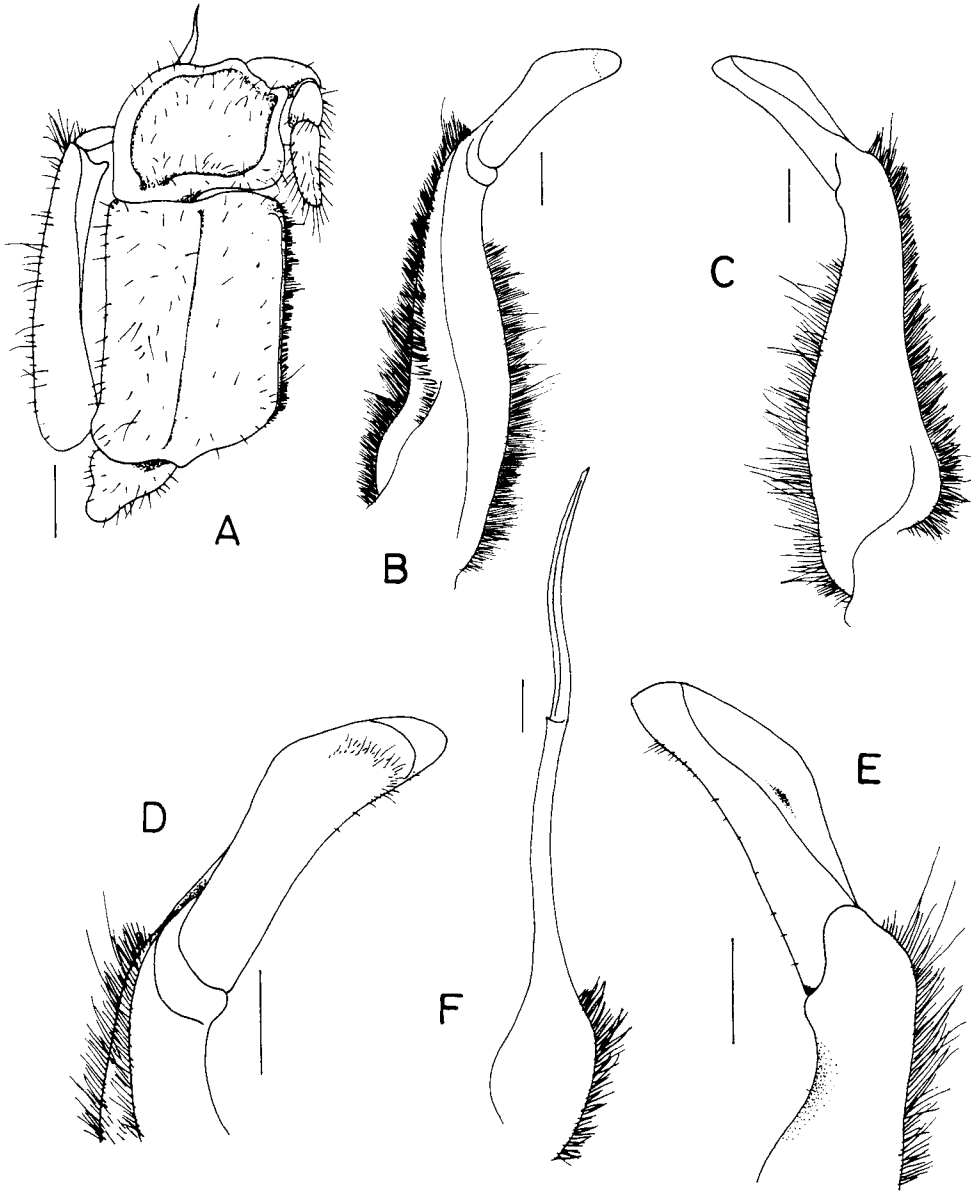


Fig. 41. *Potamon somchaii* spec. nov., holotype, ♂ (46.8 by 37.5 mm) (RMNH D 42350). A, right third maxilliped; B-E, left G1; F, left G2. B, D, ventral view; C, E, dorsal view; D, E, G1 terminal segment. Scales: A, 2.0 mm; B-F, 1.0 mm.

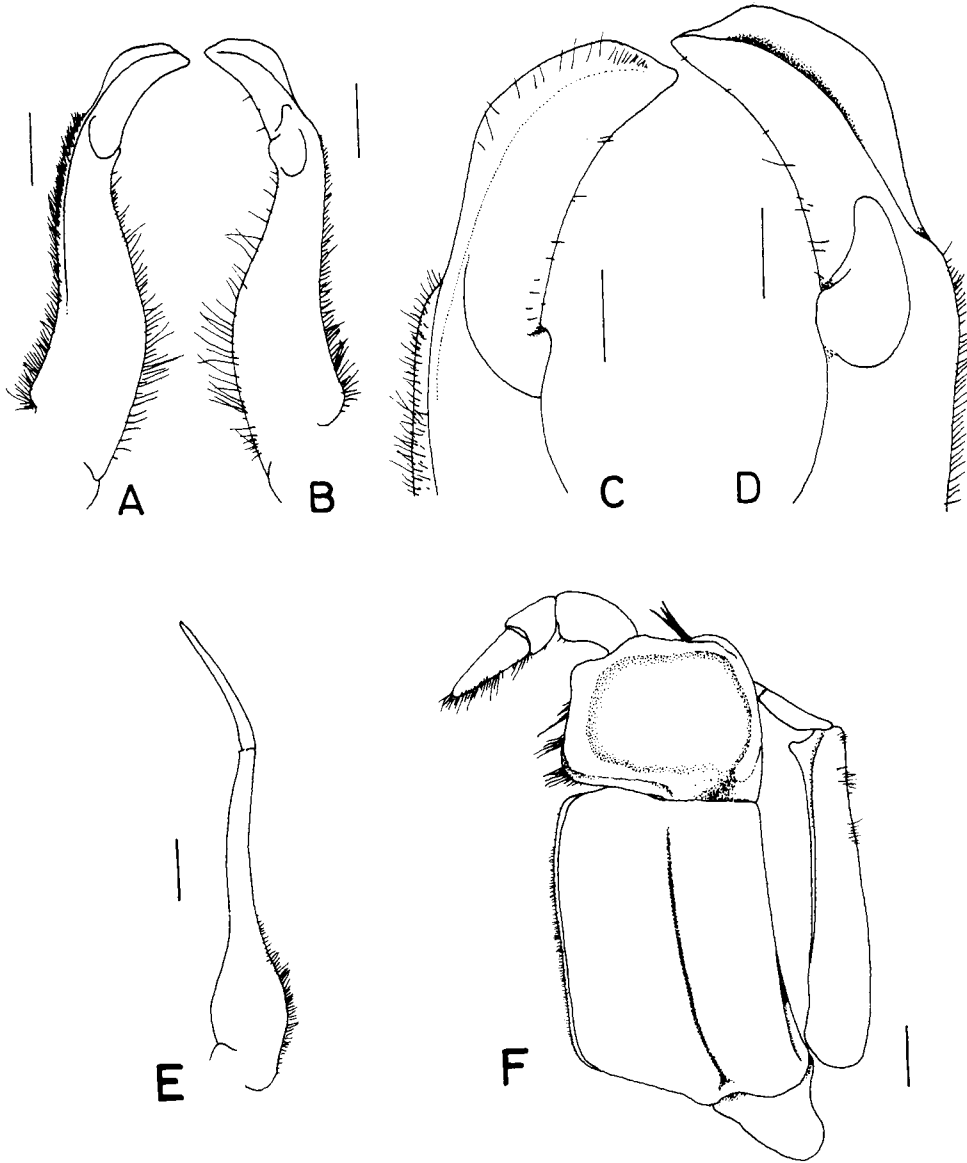


Fig. 42. *Potamon palustre* Rathbun, 1904, holotype, ♂ (28.0 by 22.5 mm) (MP-B 5265), "Montagnes Siam de Laos", leg. Harmand, 1877. A-D, left G1; E, left G2; F, left third maxilliped. A, C, ventral view; B, D, dorsal view; C, D, G1 terminal segment. A, B, E, F, 1.0 mm; C, D, 0.5 mm.

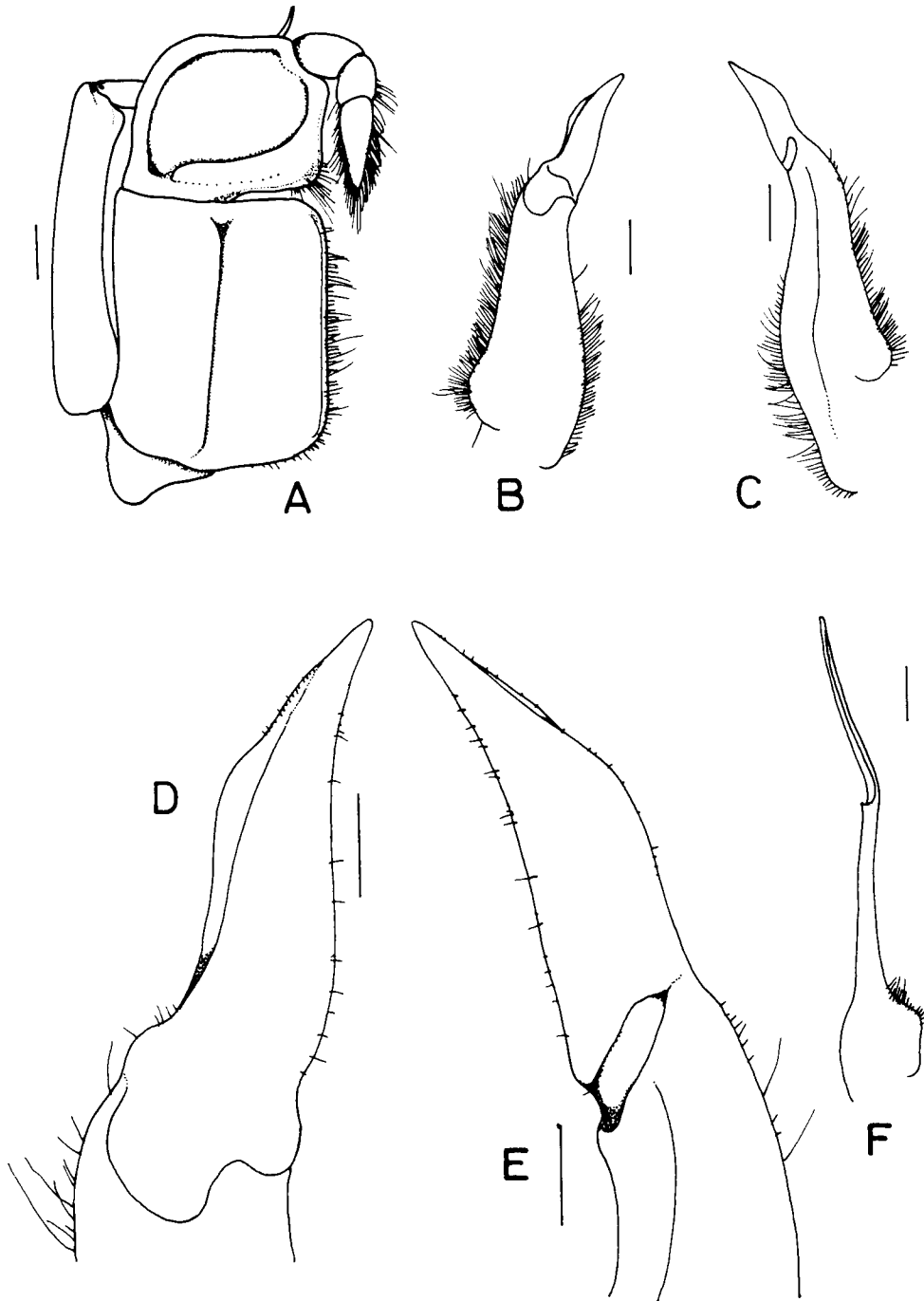


Fig. 43. *Potamon phuphanense* Naiyanetr, 1992, holotype, ♂ (32.6 by 26.5 mm) (ZRC 1991.1839). A, right third maxilliped; B-E, right G1; F, right G2. B, D, dorsal view; C, E, ventral view; D, E, G1 terminal segment. Scales: 1.0 mm.

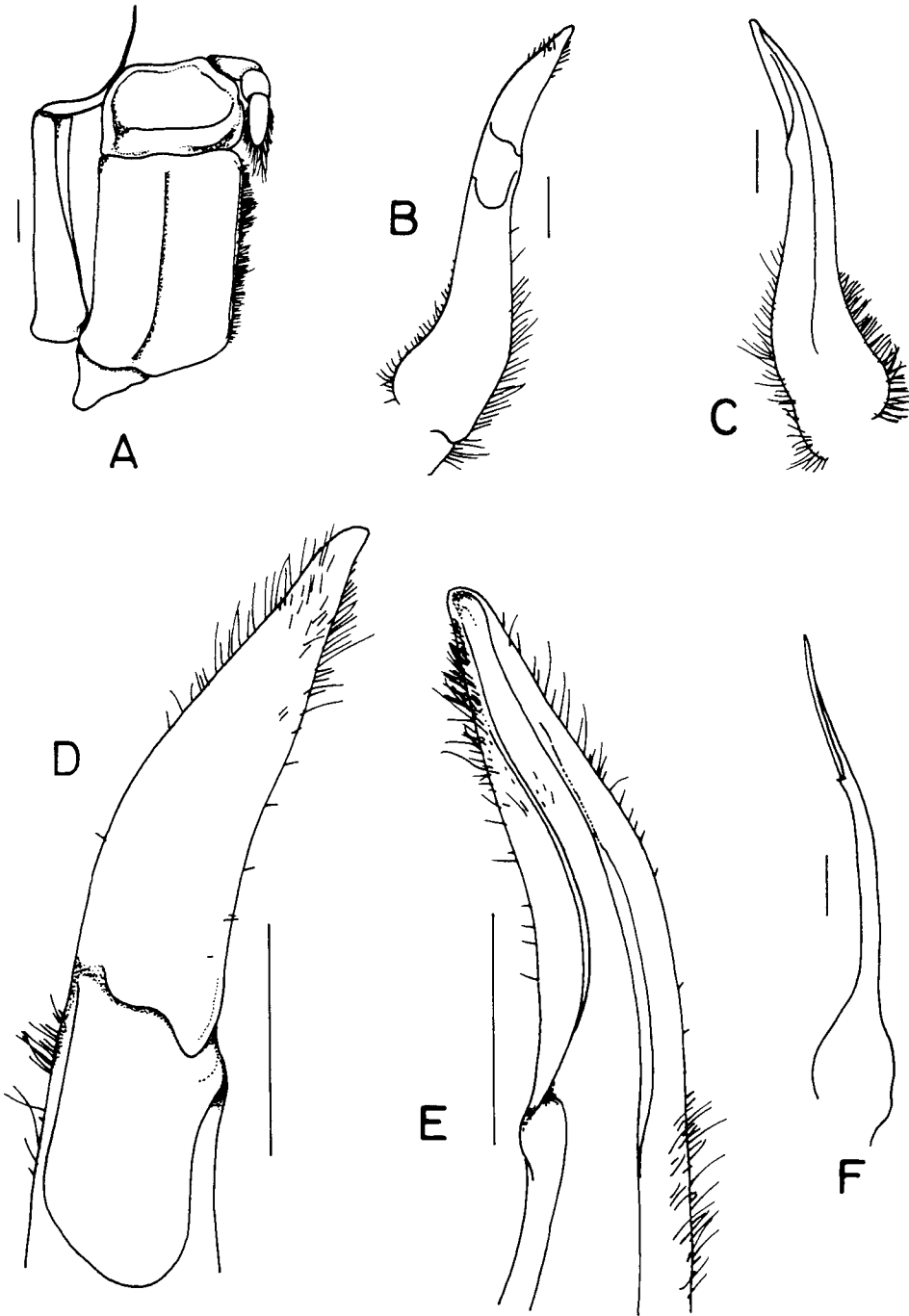


Fig. 44. *Potamon erawanense* Naiyanetr, 1992, holotype, ♂ (34.0 by 25.3 mm) (ZRC 1991.1843). A, right third maxilliped; B-E, right G1; F, right G2. B, D, dorsal view; C, E, ventral view; D, E, G1 terminal segment. Scales: 1.0 mm.

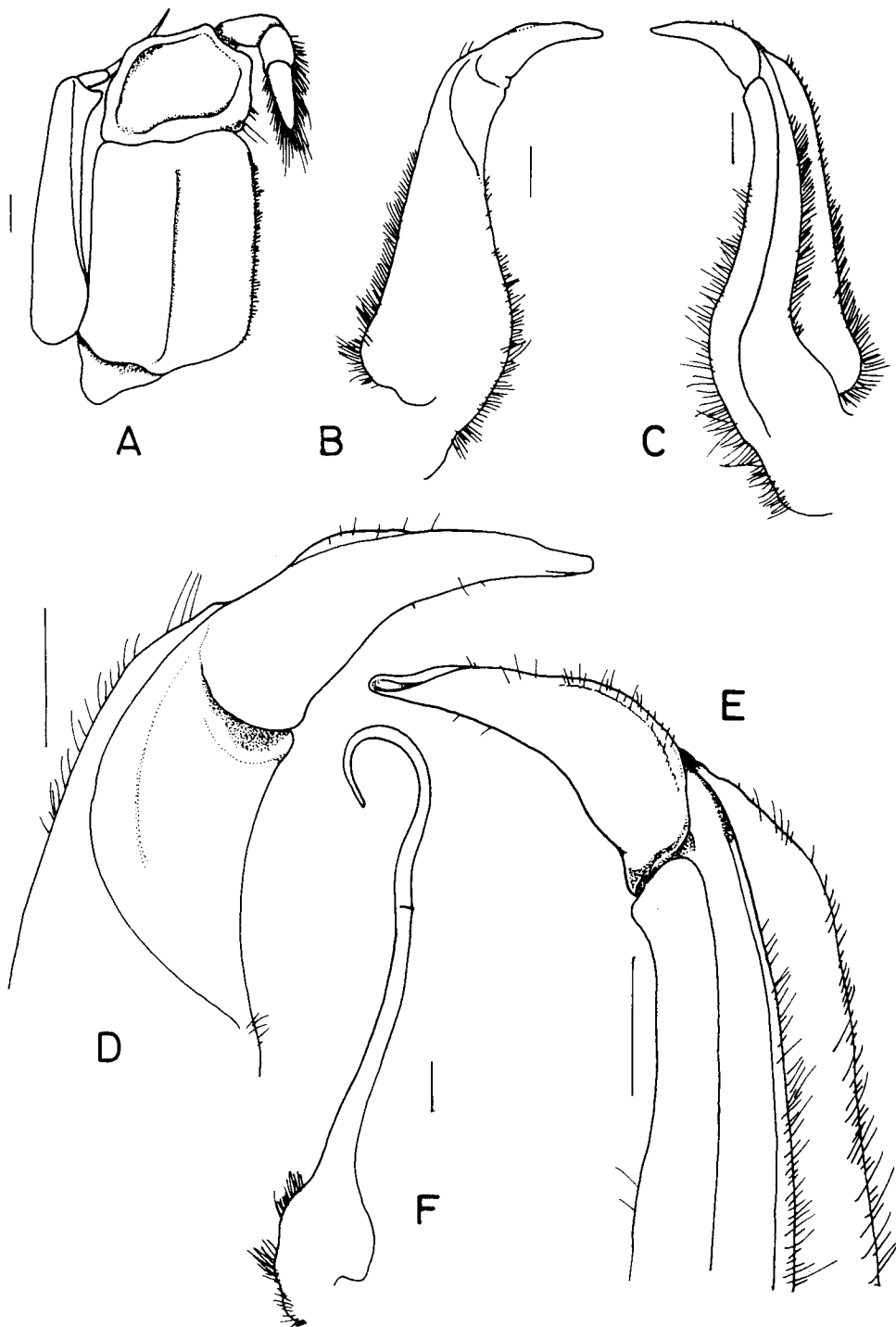


Fig. 45. *Potamon machongsonense* Naiyanetr, 1992, holotype, σ (39.0 by 30.2 mm) (ZRC 1991.1847). A, right third maxilliped; B-E, right G1; F, right G2. B, D, dorsal view; C, E, ventral; D, E, G1 terminal segment. Scales: 1.0 mm.

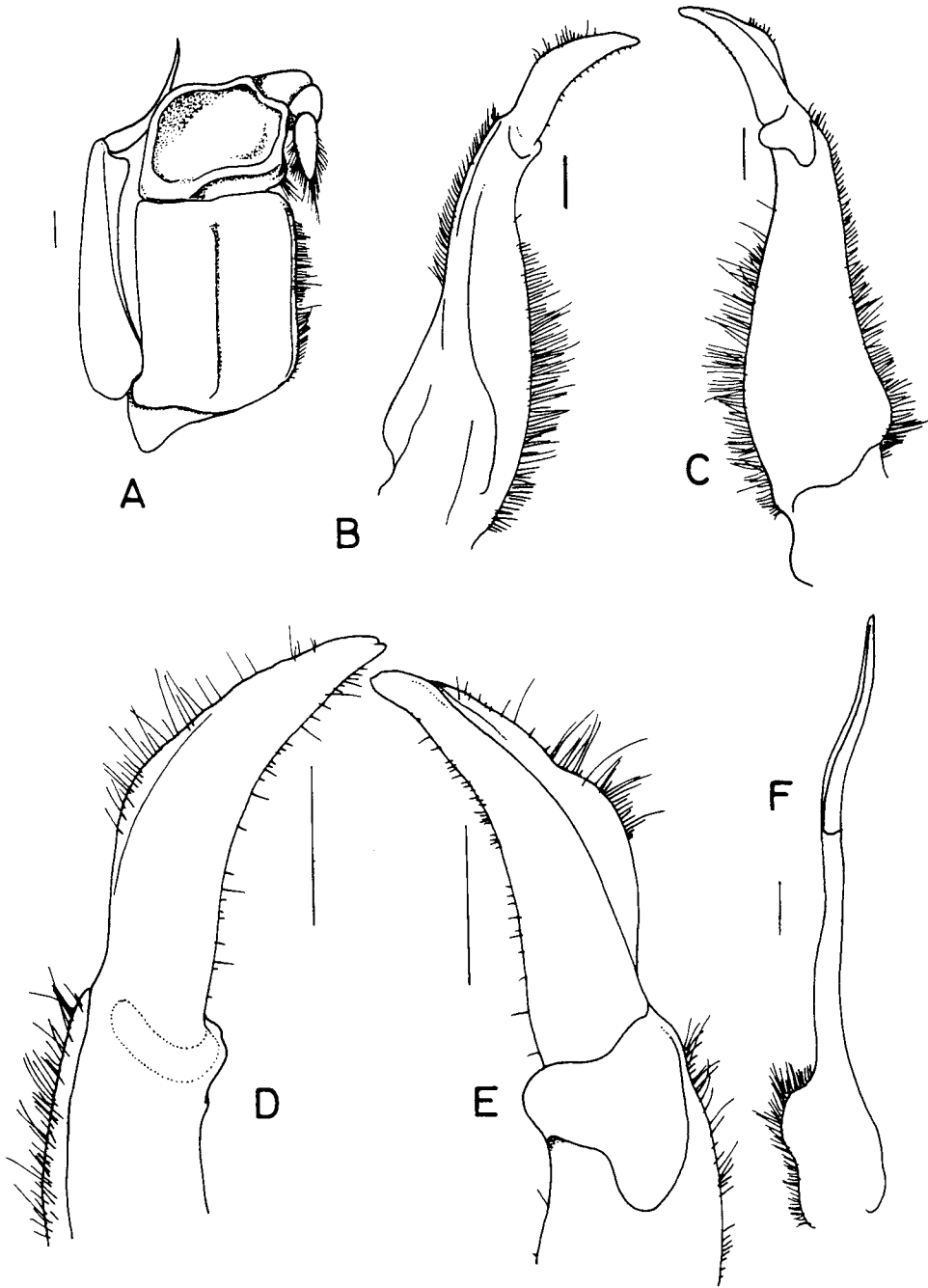


Fig. 46. *Potamon yotdomense* (Naiyanetr, 1984), paratype, ♂ (42.8 by 32.9 mm) (ZRC 1991.1850). A, right third maxilliped; B-E, left G1; F, left G2. B, D, ventral view; C, E, dorsal view; D, E, G1 terminal segment. Scales: 1.0 mm.

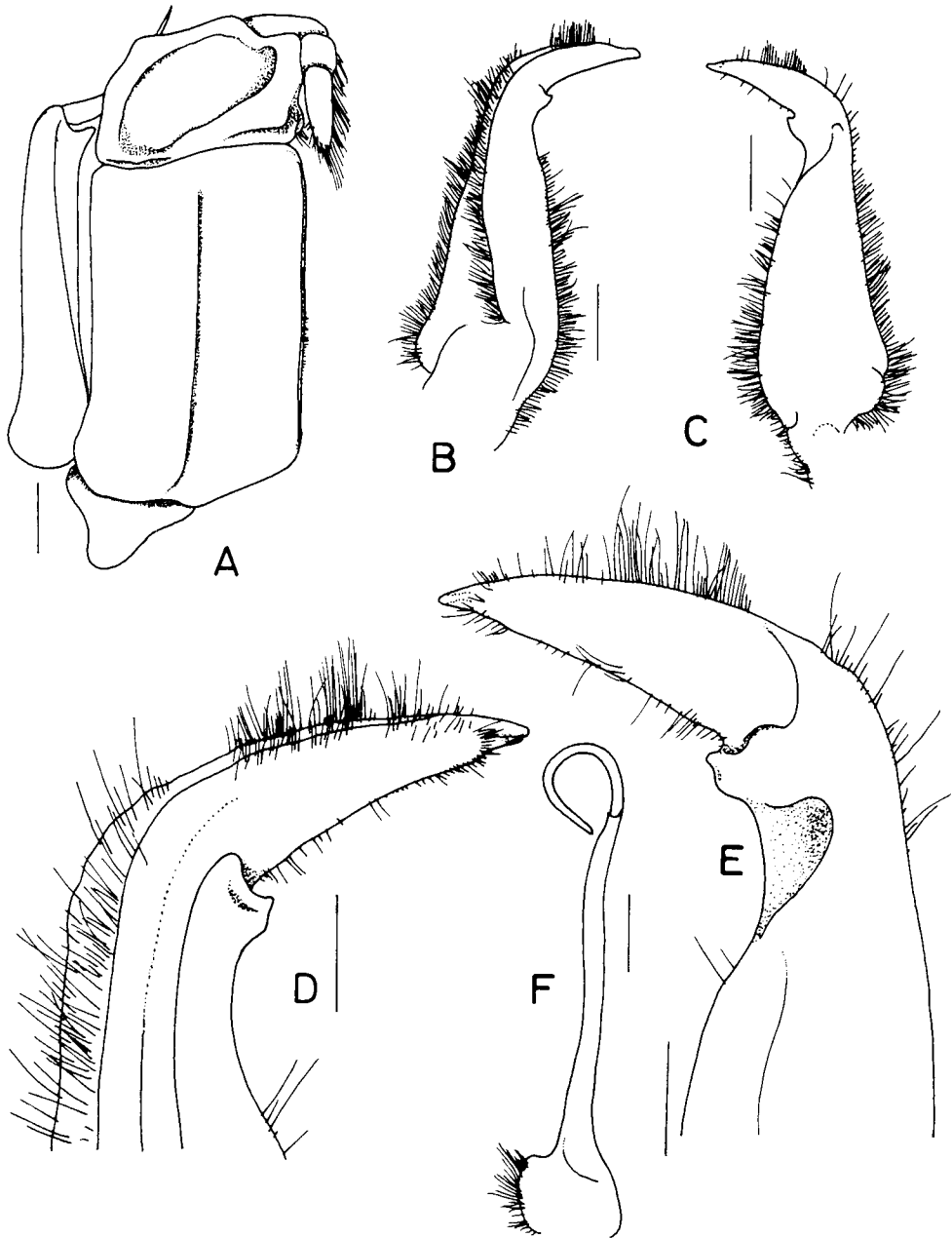


Fig. 47. *Potamon lipkei* spec. nov., holotype, ♂ (56.8 by 42.8 mm) (RMNH D 42353). A, right third maxilliped; B-E, left G1; F, left G2. B, D, ventral view; C, E, dorsal view; D, E, G1 terminal segment. Scales: A-C, F, 2.0 mm; D, E, 1.0 mm.

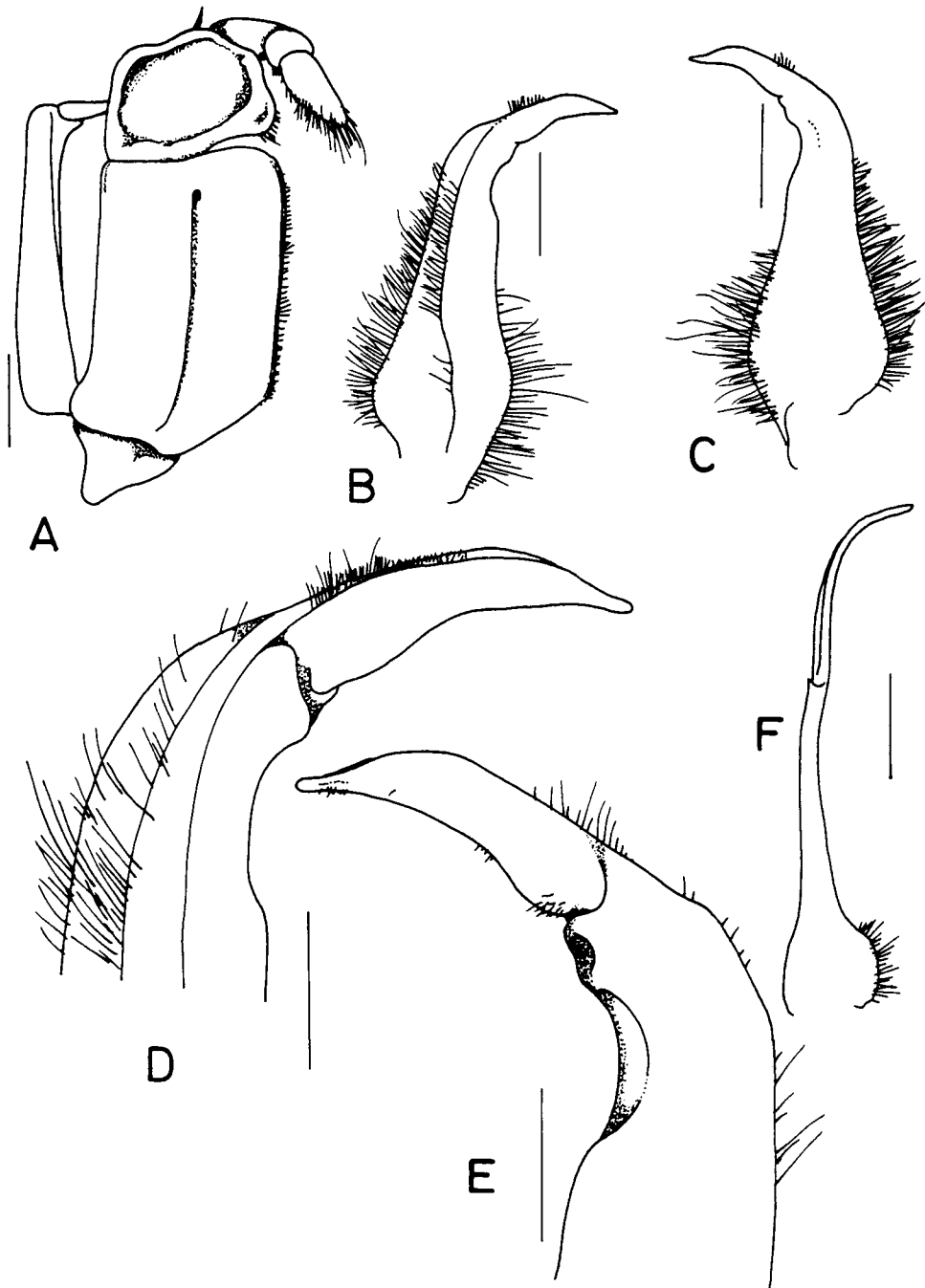


Fig. 48. *Potamon nan* spec. nov., holotype, ♂ (35.6 by 27.2 mm) (RMNH D 42345). A, right third maxilliped; B-E, left G1; F, left G2. B, D, ventral view; C, E, dorsal view; D, E, G1 terminal segment. A-C, F, 2.0 mm; D, E, 1.0 mm.

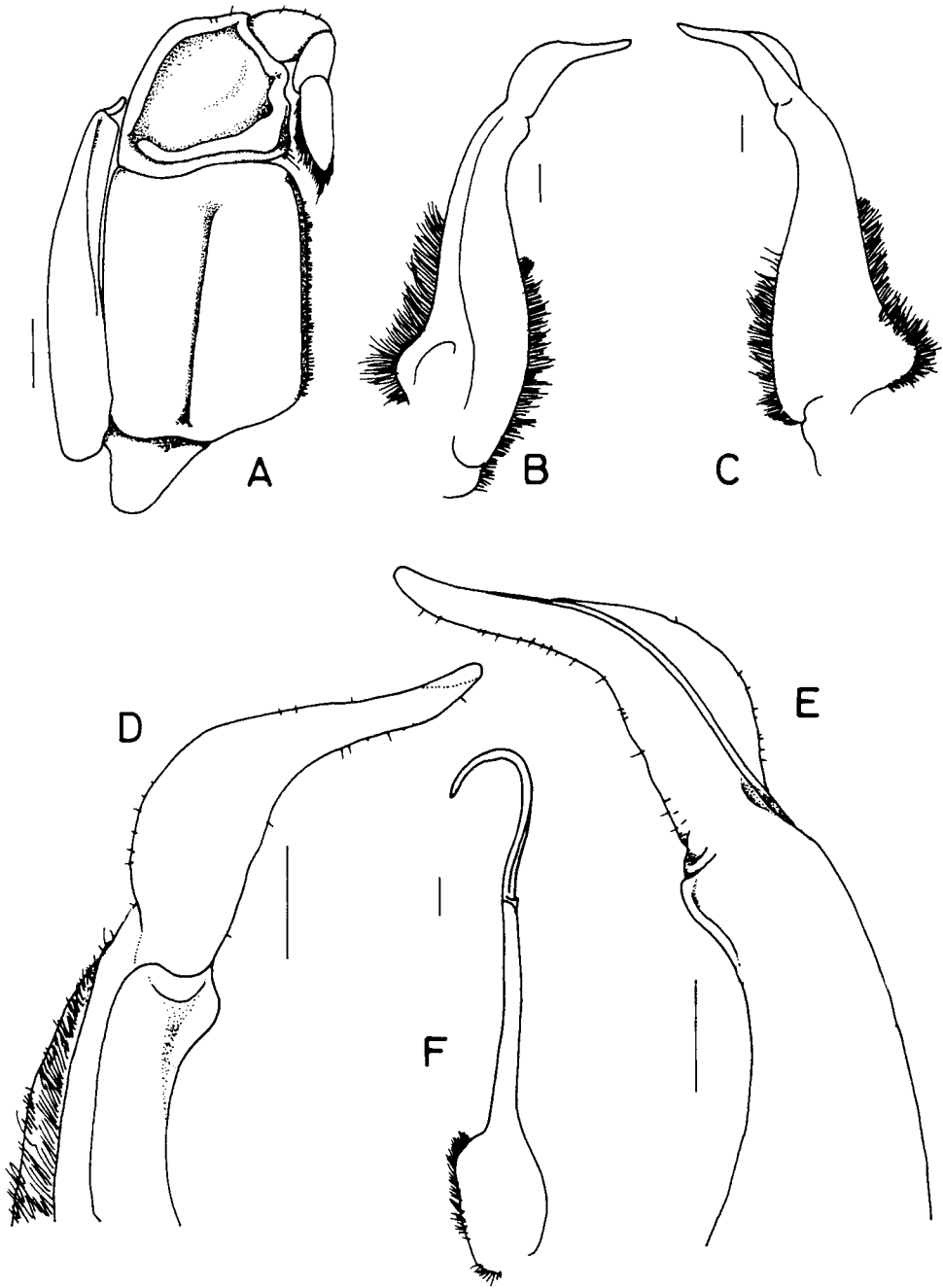


Fig. 49. *Dromothelphusa phrae* (Naiyanetr, 1984), paratype, ♂ (52.3 by 41.2 mm) (ZRC 1991.1868). A, right third maxilliped; B-E, left G1; F, left G2. B, D, ventral view; C, E, dorsal view; D, E, G1 terminal segment. Scales: A, 2.0 mm; B, C, F, 1.0 mm; D, E, 0.5 mm.

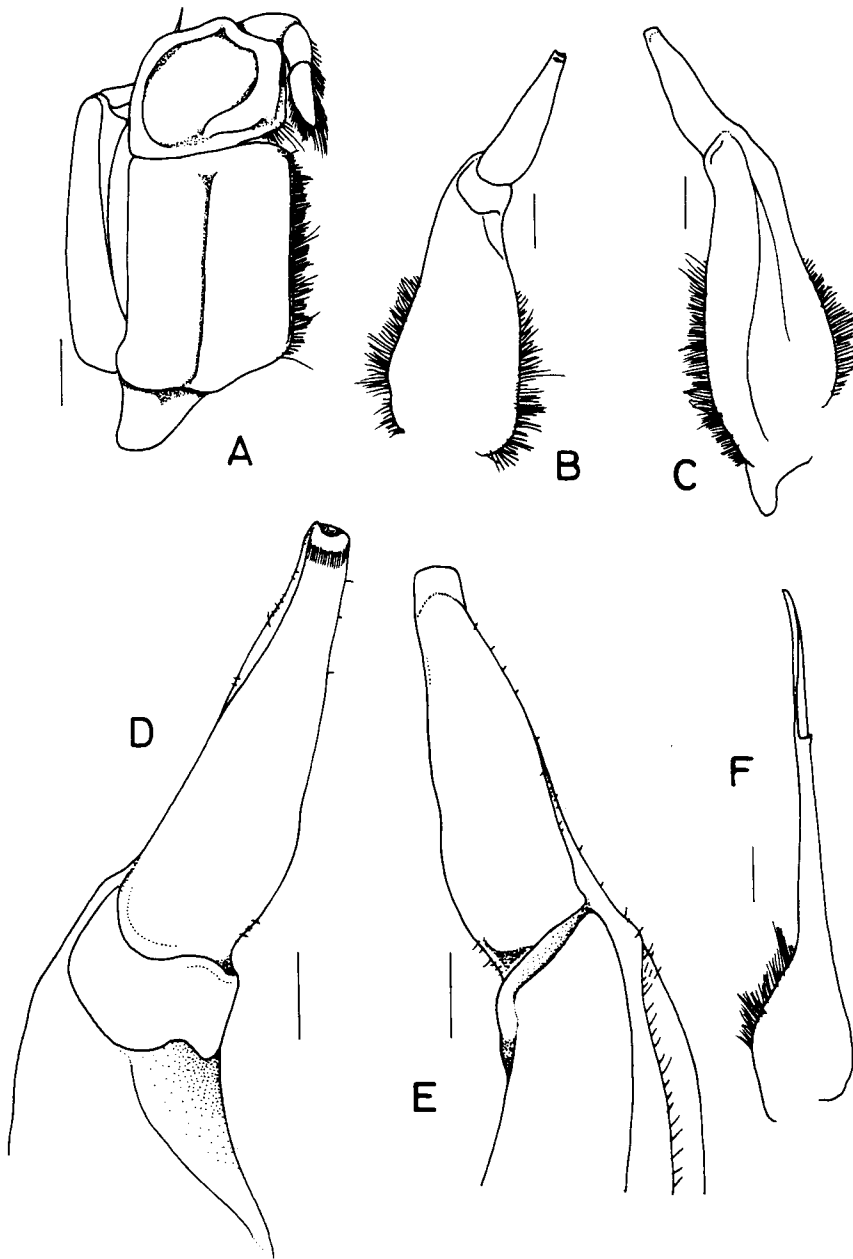


Fig. 50. *Larnaudia chaiyaphumi* Naiyanetr, 1982, paralectotype, ♂ (42.4 by 33.4 mm) (ZRC 1991.1871). A, right third maxilliped; B-E, right G1; F, right G2. B, D, dorsal view; C, E, ventral; D, E, G1 terminal segment. Scales: A, 2.0 mm; B, C, F, 1.0 mm; D, E, 0.5 mm.

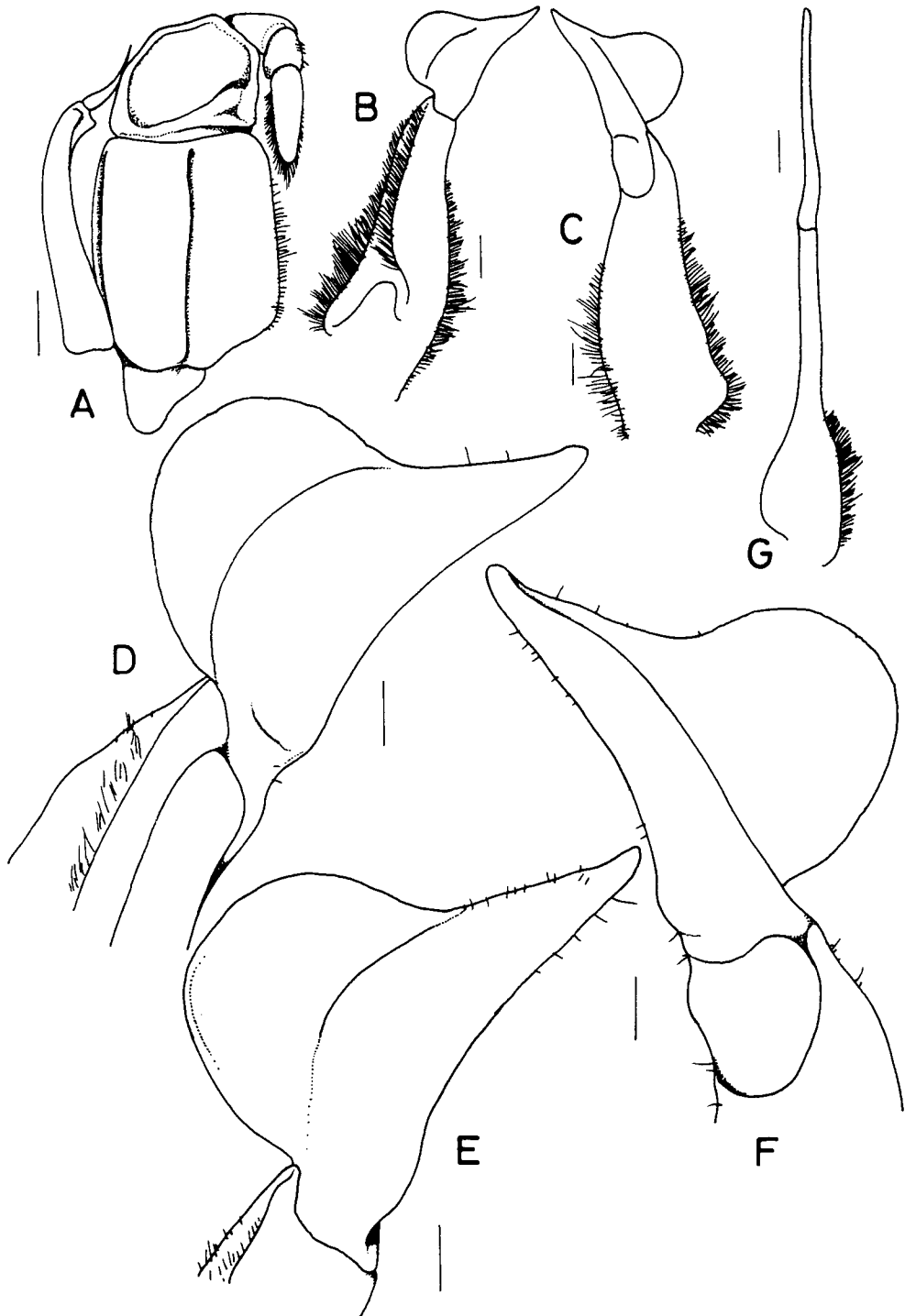


Fig. 51. *Thaipotamon lomkao* spec. nov., holotype, ♂ (43.5 by 32.0 mm) (ZRC 1991.1873). A, right third maxilliped; B-F, left G1; G, left G2. B, D, E, ventral view; C, F, dorsal view; D, E, F, G1 terminal segment; D, E drawn at different orientations. Scales: A, 2.0 mm; B, C, G, 1.0 mm; D-F, 0.5 mm.

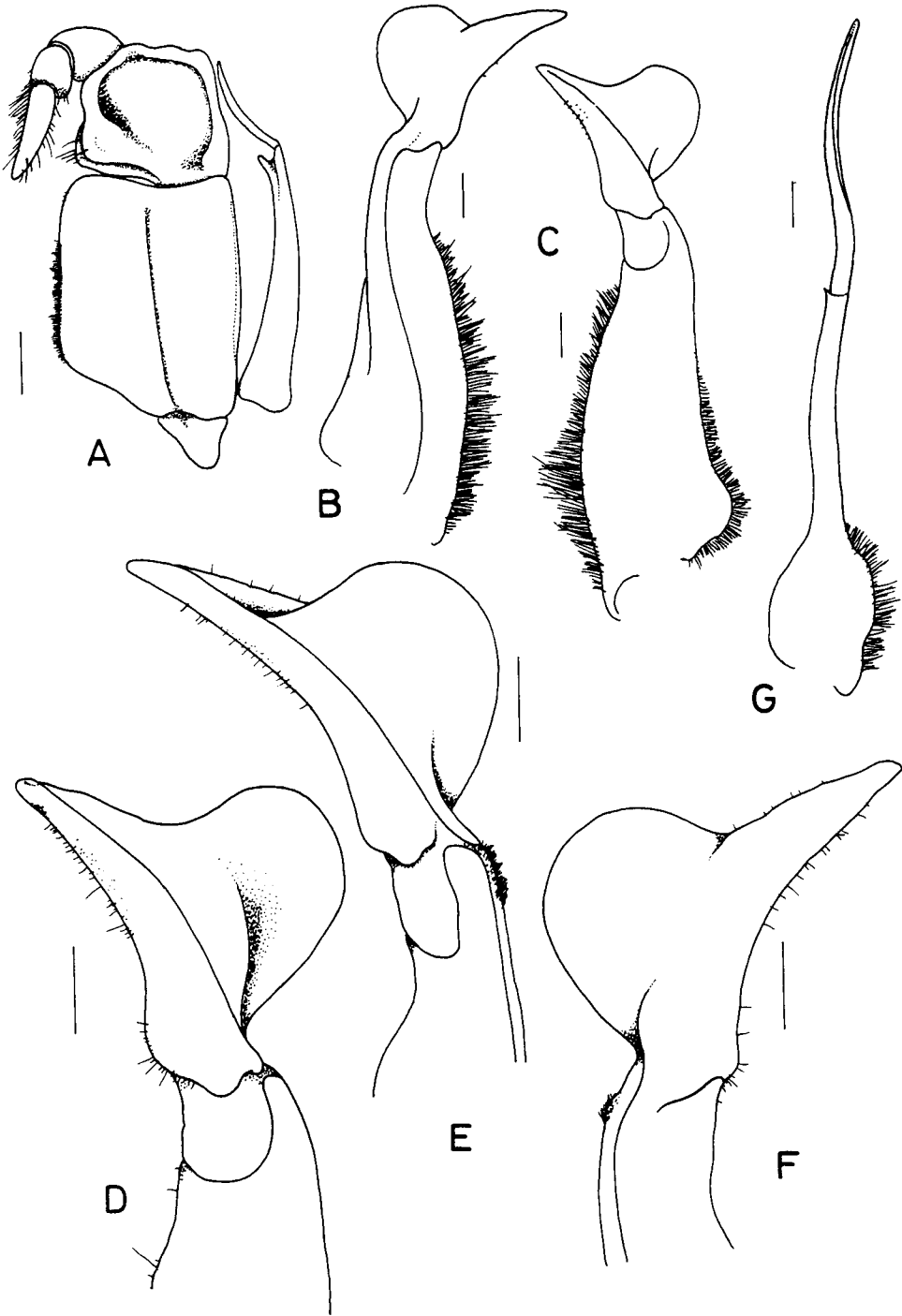


Fig. 52. *Thaipotamon dansai* spec. nov., holotype, ♂ (48.5 by 34.5 mm) (RMNH D 42346). A, right maxilliped; B-F, left G1; G, left G2. B, D, E, ventral view; C, F, dorsal view; D, E, G1 terminal segment; D, E, F, drawn at different orientations. Scales: A, 2.0 mm; B-G, 1.0 mm.

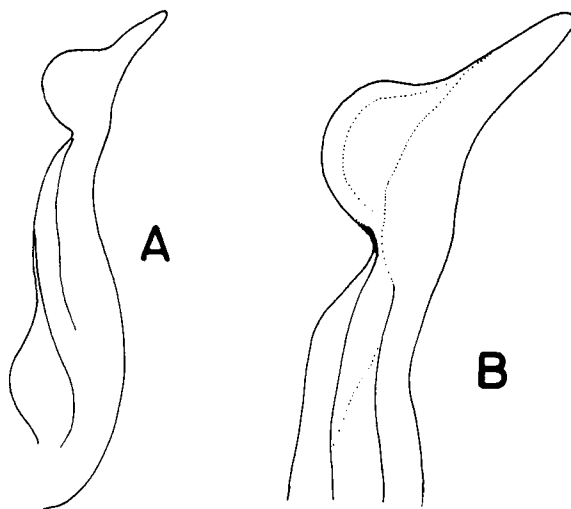


Fig. 53. *Thaipotamon* spec., σ , left G1 (43.0 by 32.0 mm) (USNM 94414) (copied from photographs). A, ventral view; B, terminal segment.

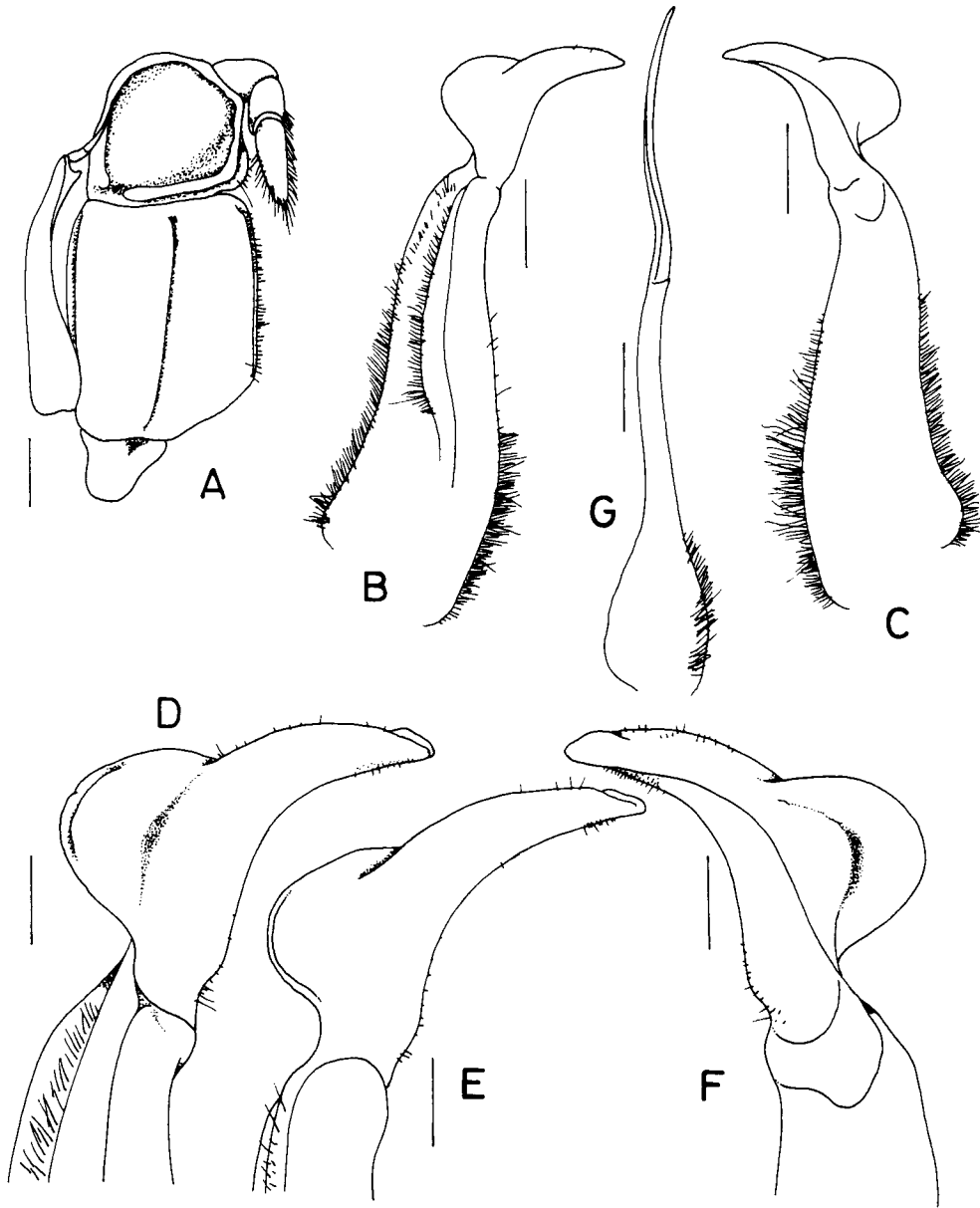


Fig. 54. *Thaipotamon varoonphornae* spec. nov., holotype, ♂ (43.5 by 32.2 mm) (RMNH D 42351). A, left third maxilliped; B-F, left G1; G, left G2. B, F, ventral view; C, D, E, dorsal view; D, E, F, G1 terminal segment; D, E drawn at different orientations. Scales: A-C, G, 2.0 mm; D-F, 1.0 mm.

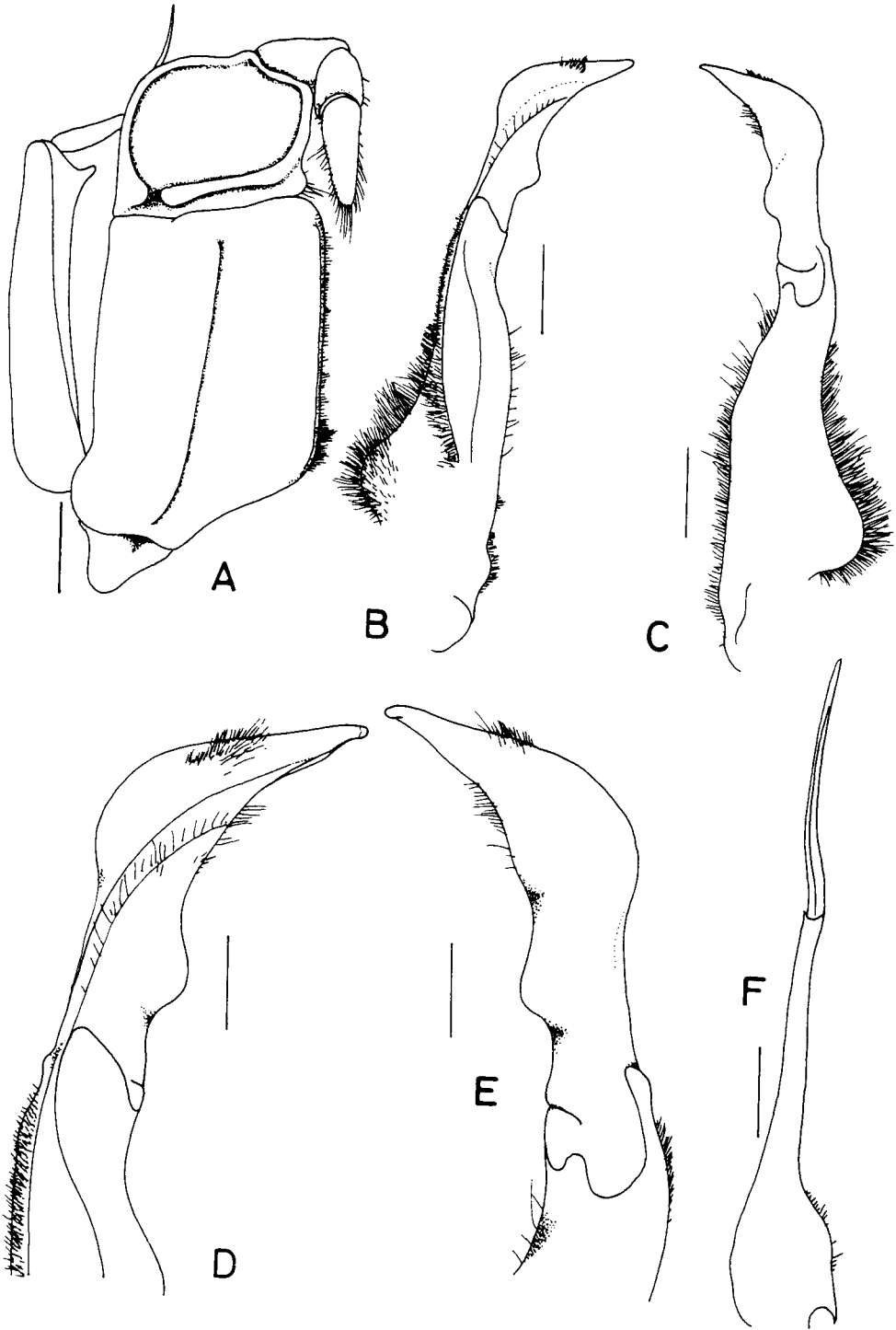


Fig. 55. *Kanpotamon duangkhaei* spec. nov., holotype, ♂ (49.8 by 35.5 mm) (CUMZ). A, right third maxilliped; B-E, left G1; F, left G2. B, D, ventral view; C, E, dorsal view; D, E, G1 terminal segment. Scales: A-C, F, 2.0 mm; D, E, 1.0 mm.

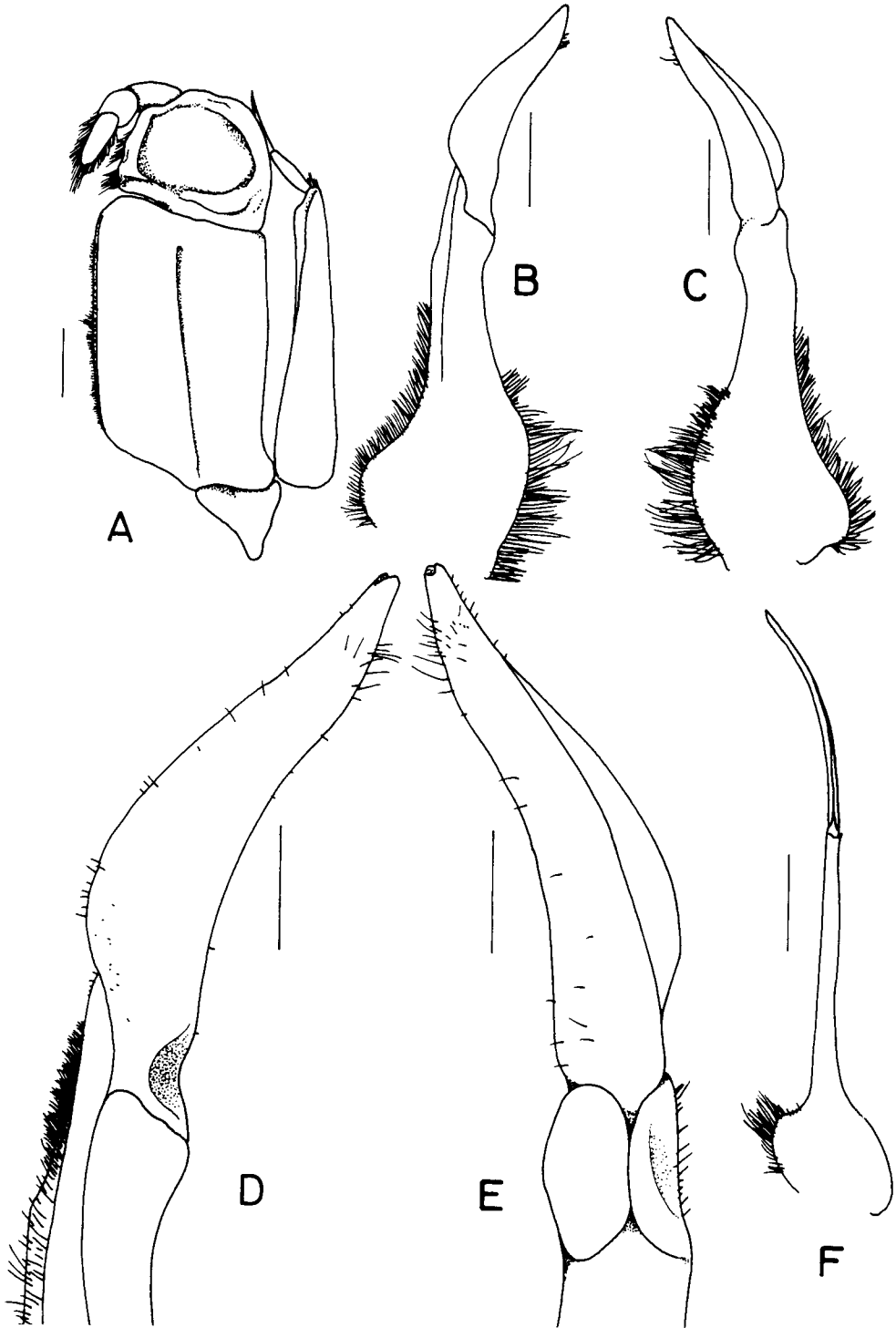


Fig. 56. *Thaiphusa siriti* (Naiyanetr, 1992), paratype, ♂ (46.5 by 32.0 mm) (ZRC 1991.1880). A, left third maxilliped; B-E, left G1; F, left G2. B, D, ventral view; C, E, dorsal view; D, E, G1 terminal segment. Scales: A-C, F, 2.0 mm; D, E, 1.0 mm.

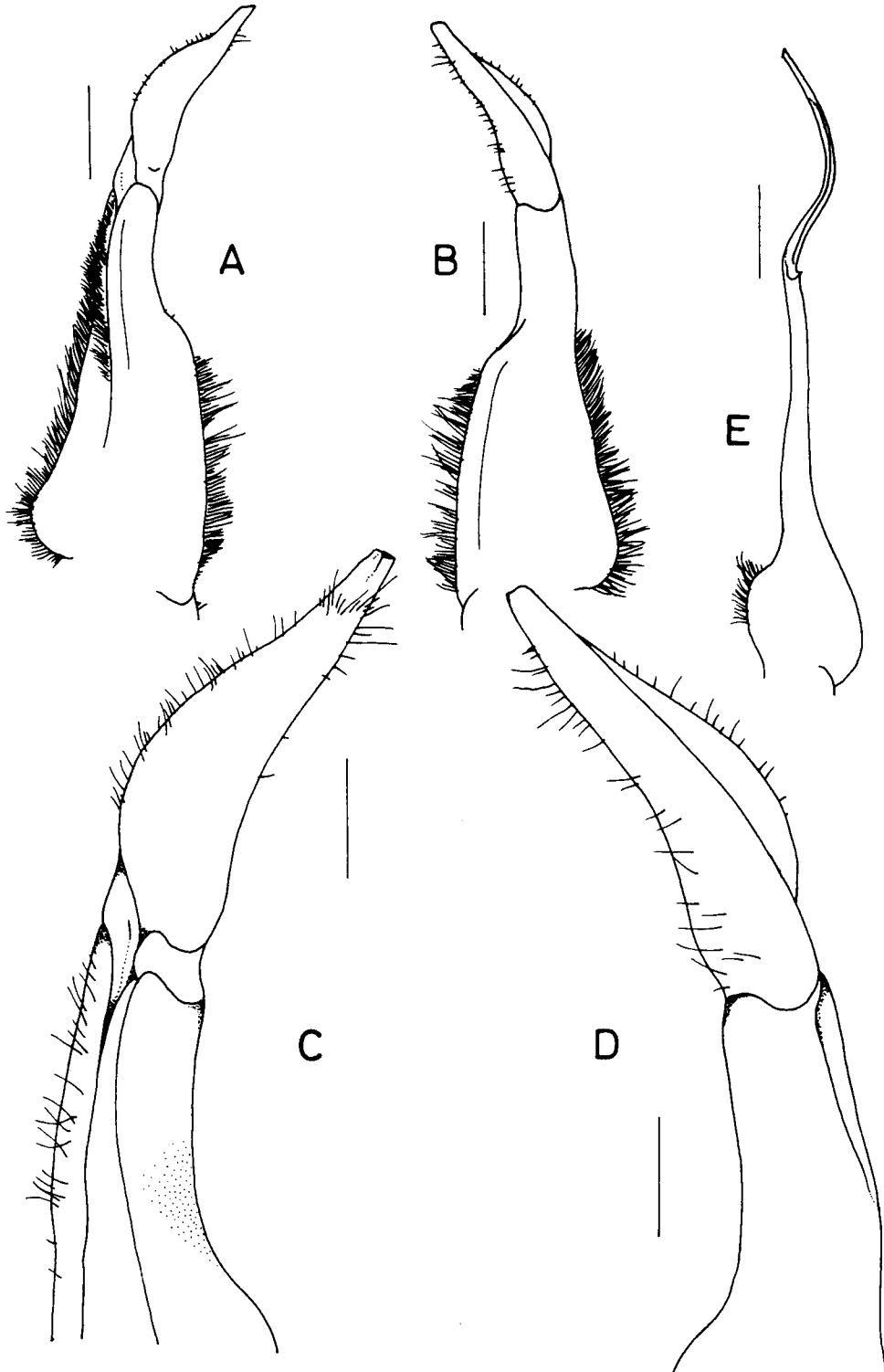


Fig. 57. *Thaiphusa tenasserimensis* (de Man, 1898), topotype, ♂ (30.7 by 21.9 mm) (ZRC 1965.12.7.99-100), Mount Moolevit, Burma, leg. Fea, 1894. A-D, left G1; E, left G2. A, C, ventral view; B, D, dorsal view; C, D, G1 terminal segment. Scales: 1.0 mm.

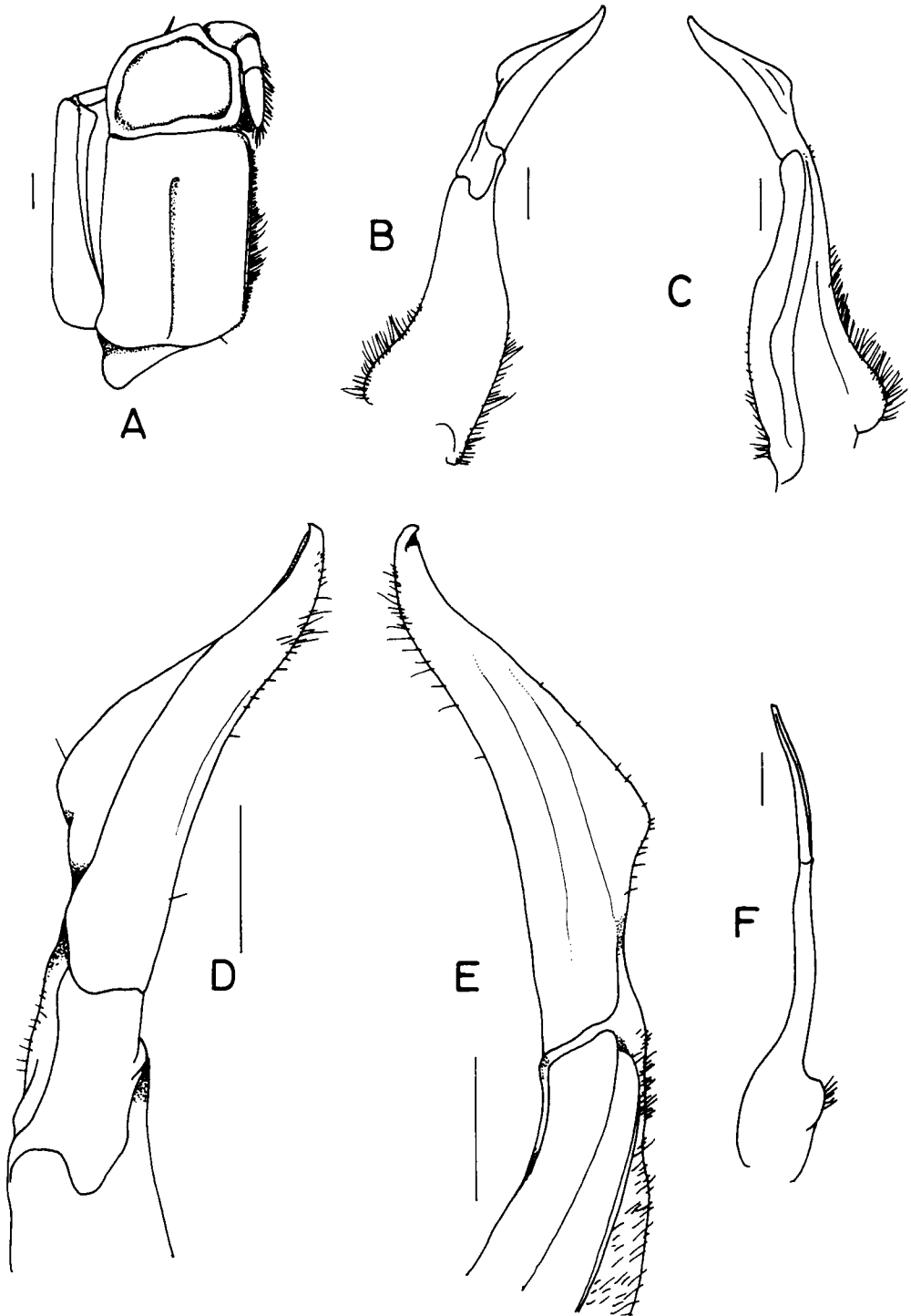


Fig. 58. *Demanietta tritrungensis* (Naiyanetr, 1986), paratype, ♂ (37.7 by 28.0 mm) (ZRC 1991.1857). A, right third maxilliped; B-E, right G1; F, right G2. B, D, dorsal view; C, E, ventral view; D, E, G1 terminal segment. Scales: 1.0 mm.

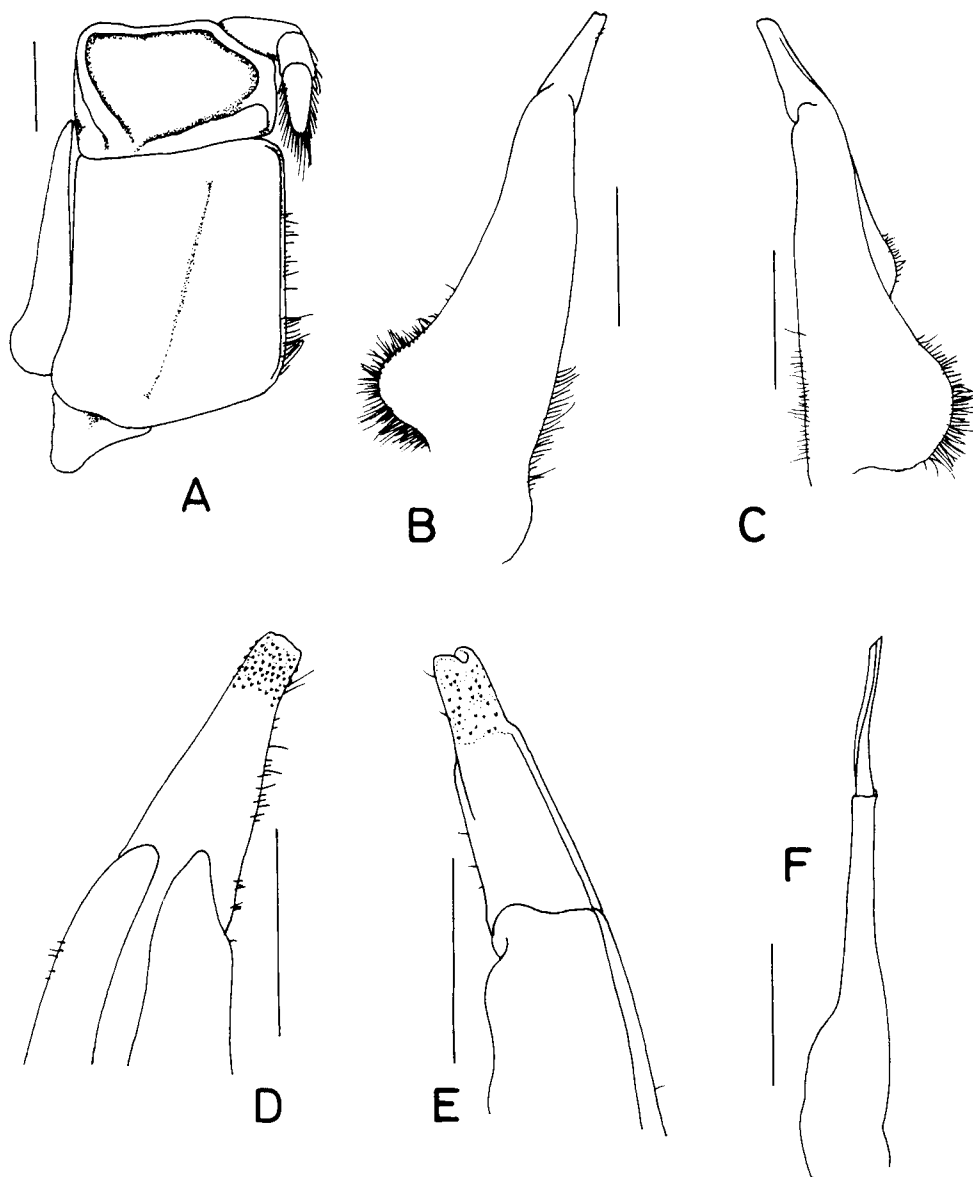


Fig. 59. *Phricotelphusa ranongi* Naiyanetr, 1982, σ , (18.3 by 14.9 mm) (ZRC 1985.4388). A, right third maxilliped; B-E, left G1; F, left G2. B, D, ventral view; C, E, dorsal view; D, E, G1 terminal segment. Scales: A-C, F, 1.0 mm; D, E, 0.5 mm.

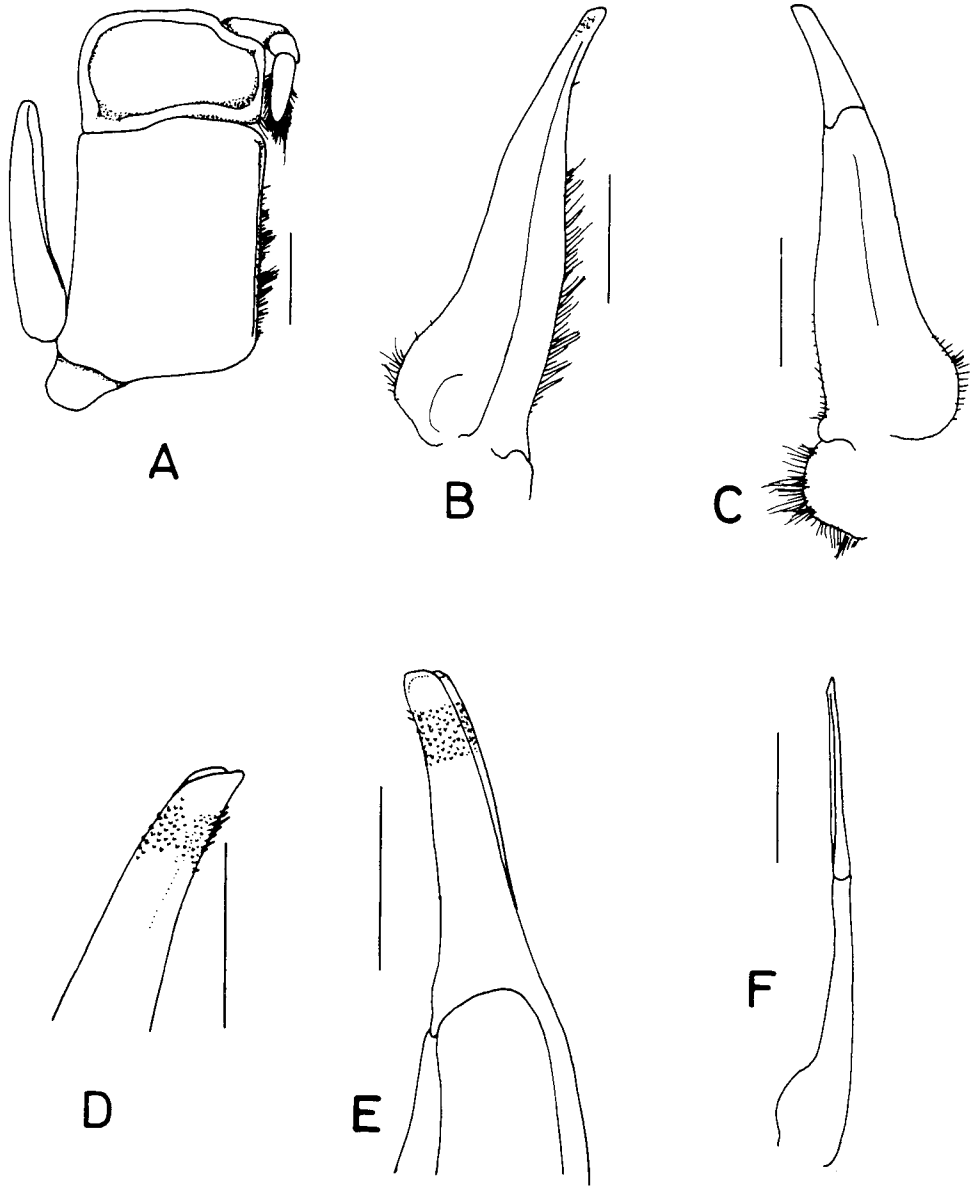


Fig. 60. *Thaksinthelphusa yongchindaratae* (Naiyanetr, 1988), lectotype, ♂ (17.7 by 13.2 mm) (RMNH D 41629). A, right third maxilliped; B-E, left G1; F, left G2. B, D, ventral view; C, E, dorsal view; D, E, G1 terminal segment. Scales: A-C, F, 1.0 mm; D, E, 0.5 mm.

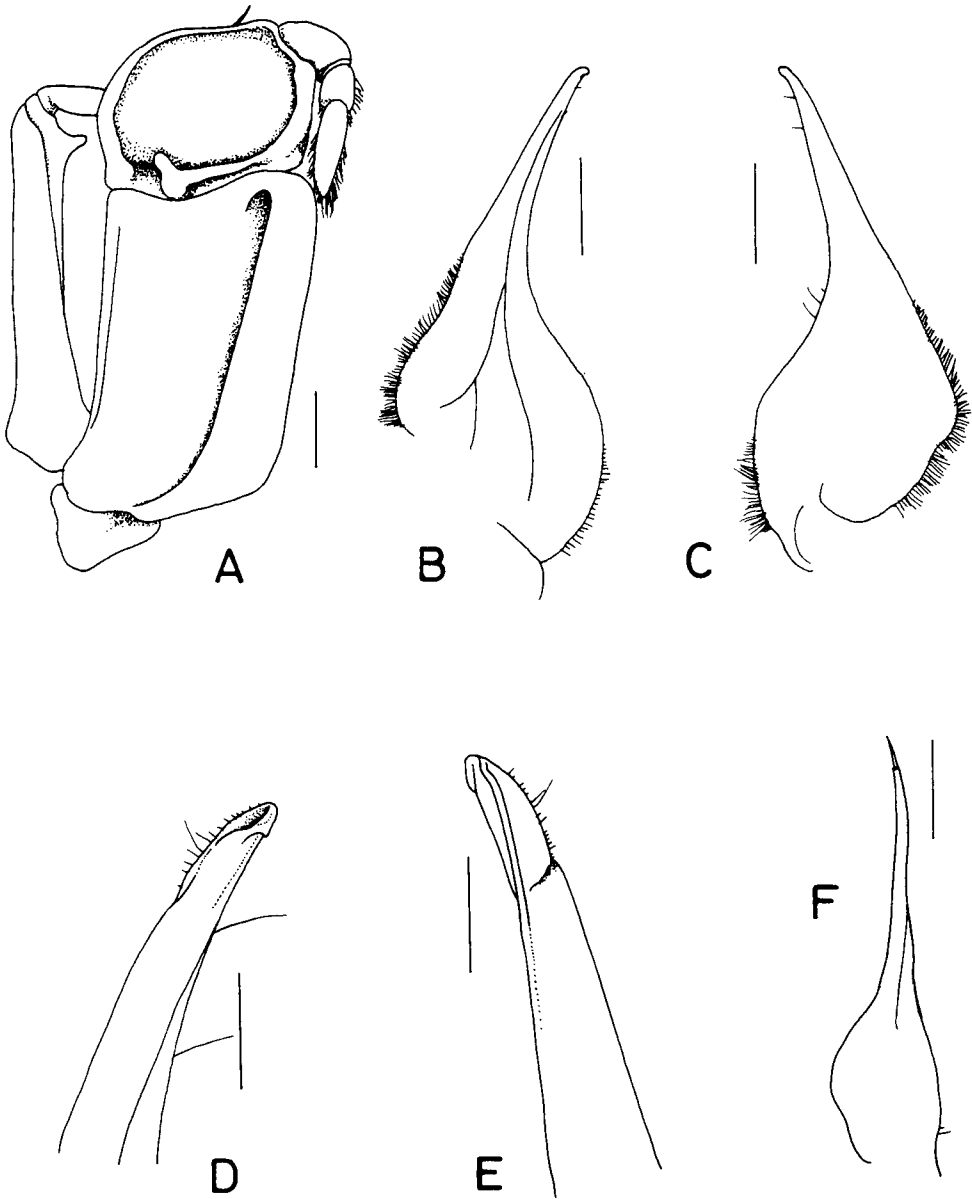


Fig. 61. *Somanniathelphusa bangkokensis* Naiyanetr, 1982, ♂ (50.7 by 41.1 mm) (ZRC 1984.7707). A, right third maxilliped; B-E, left G1; F, left G2. B, D, ventral view; C, E, dorsal view. Scales: A-C, F, 2.0 mm; D, E, 0.5 mm.

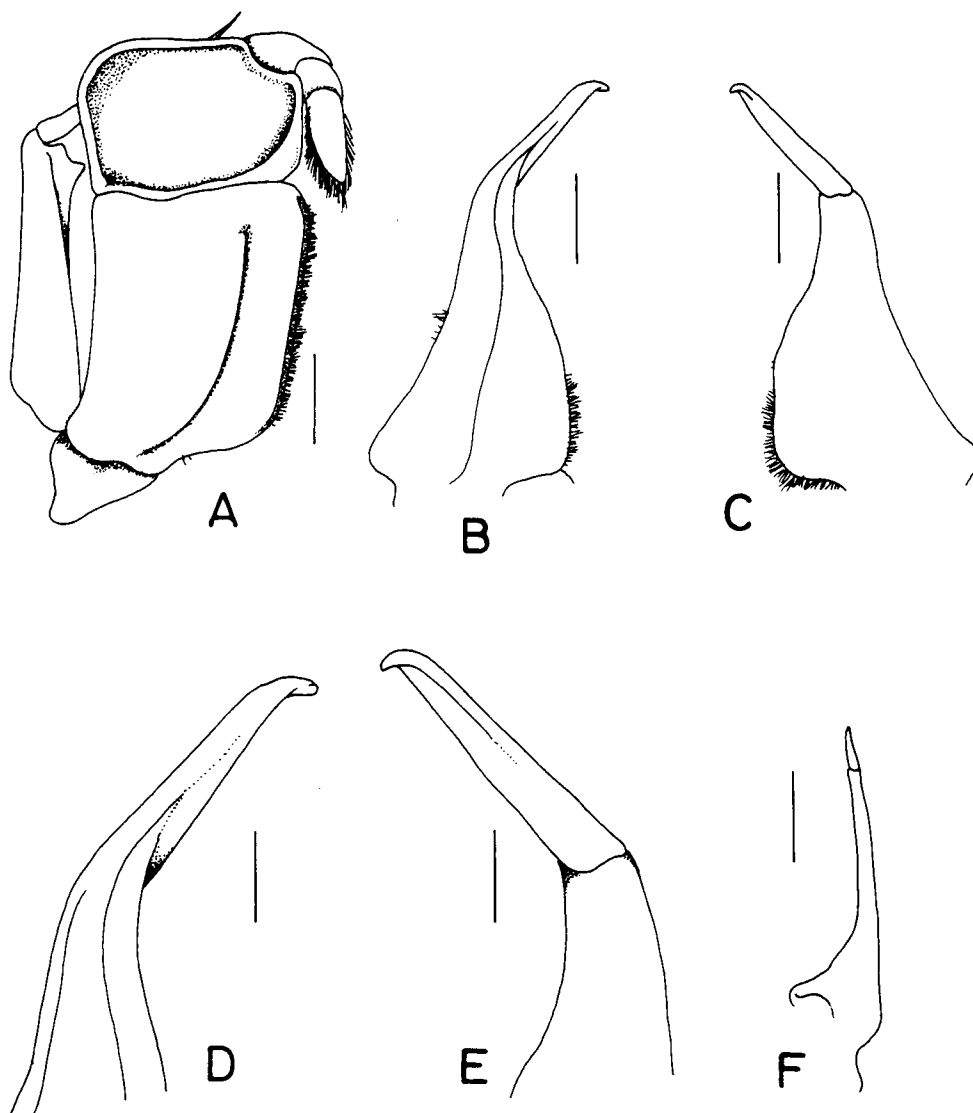


Fig. 62. *Somanniathelphusa maehongsonensis* Naiyanetr, 1987, paralectotype, σ (18.2 by 15.8 mm) (ZRC 1991.1885). A, right third maxilliped; B-E, left G1; F, left G2. B, D, ventral view; C, E, dorsal view. Scales: A-C, F, 1.0 mm; D, E, 0.5 mm.

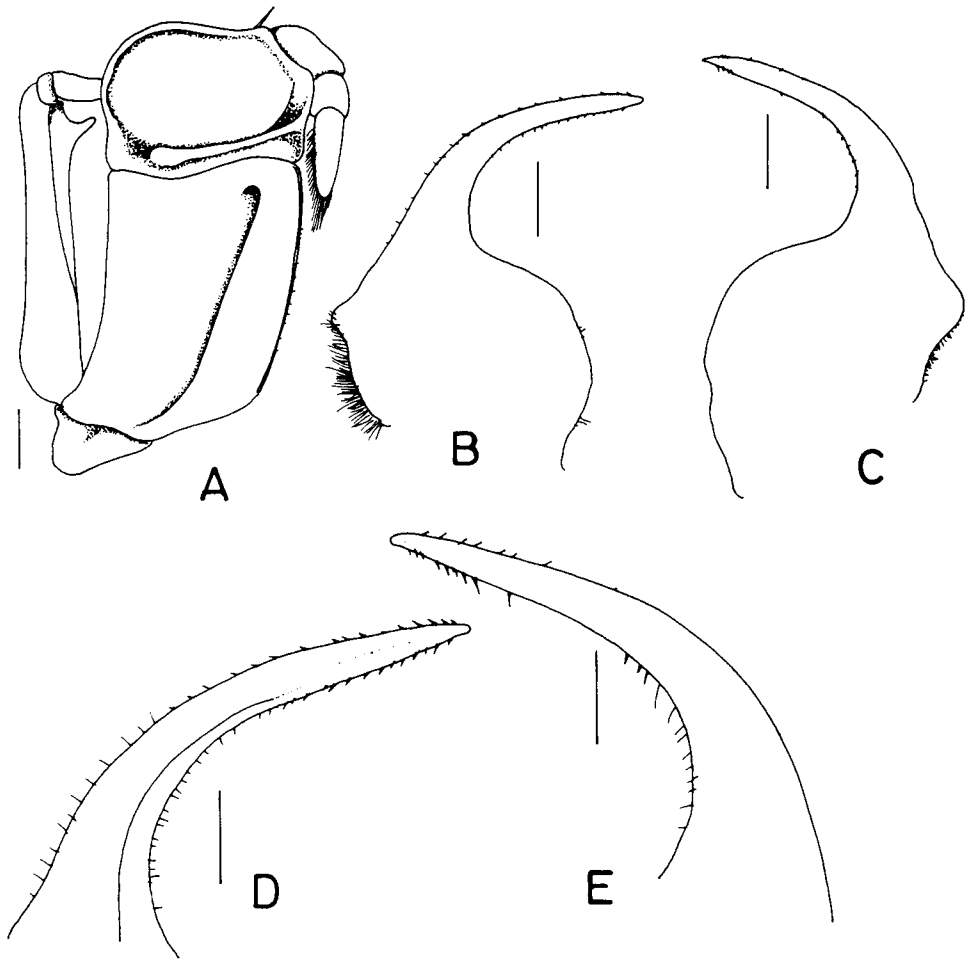


Fig. 63. *Somanniathelphusa fangensis* Naiyanetr, 1987, ♂ (28.3 by 21.8 mm) (ZRC 1984.7711). A, right third maxilliped; B-E, left G1. B, D, ventral view; C, E, dorsal view. Scales: A-C, 1.0 mm; D, E, 0.5 mm.

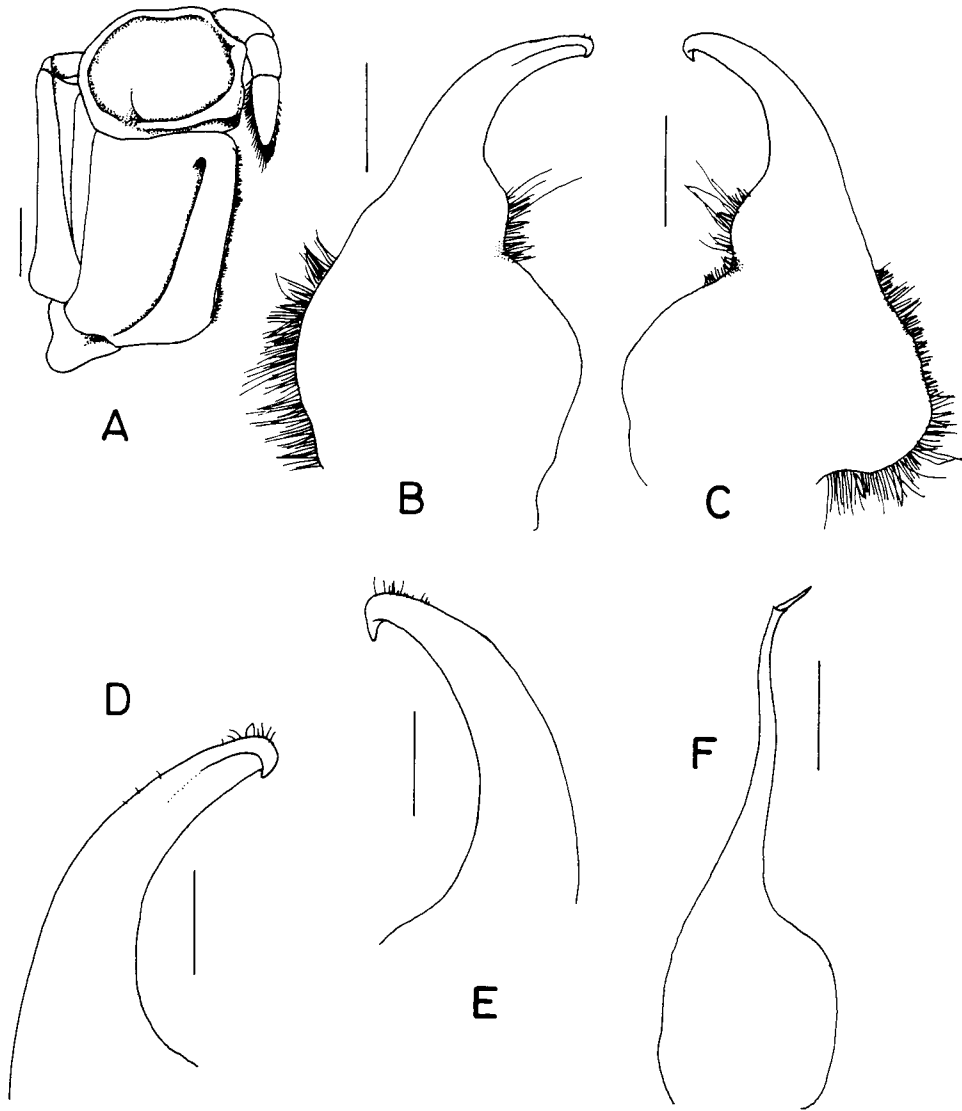


Fig. 64. *Somanniathelphusa denchaii* Naiyanetr, 1984, ♂ (36.9 by 29.2 mm) (ZRC 1984.7709). A, right third maxilliped; B-E, left G1; F, left G2. B, D, ventral view; C, E, dorsal view. Scales: A, 2.0 mm; B, C, F, 10.0 mm; D, E, 0.5 mm.

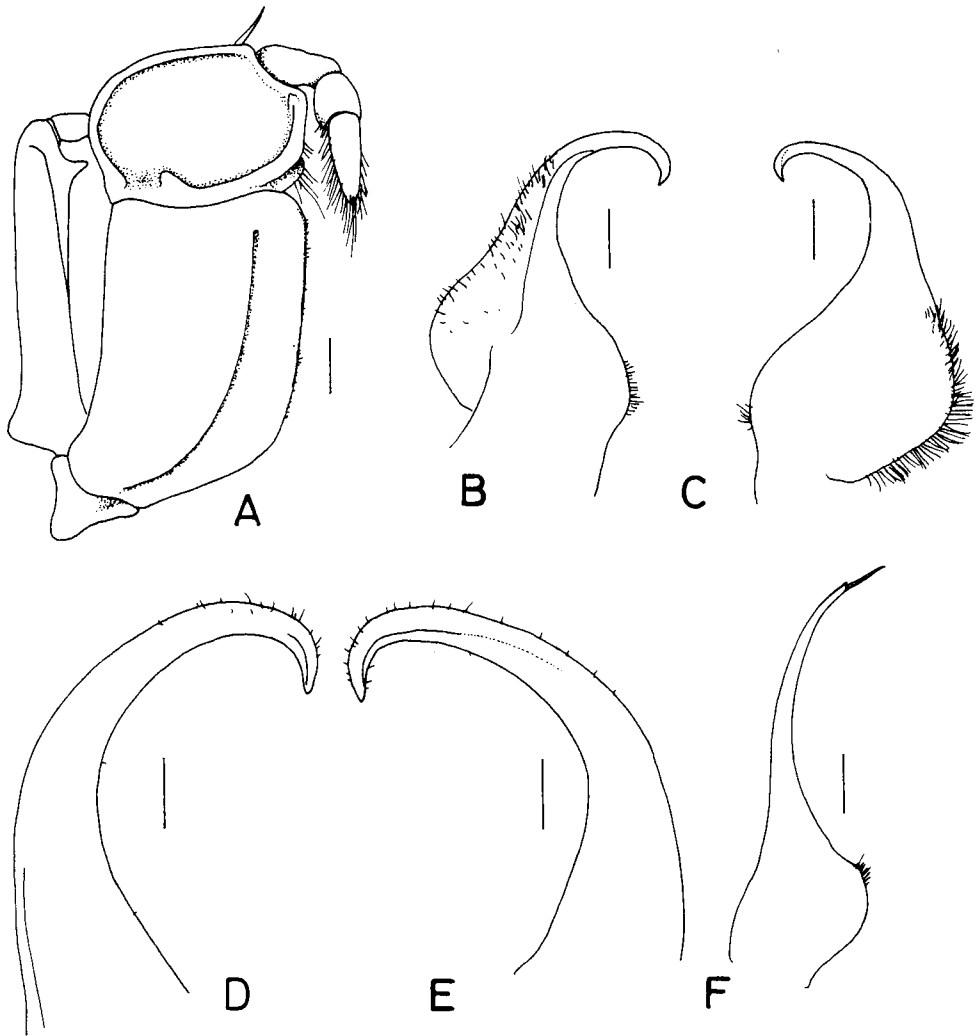


Fig. 65. *Somanniathelphusa nani* Naiyanetr, 1984, ♂ (31.9 by 25.1 mm) (ZRC 1984.7715). A, right third maxilliped; B-E, left G1; F, left G2. B, D, ventral view; C, E, dorsal view. Scales: A-C, F, 1.0 mm; D, E, 0.5 mm.

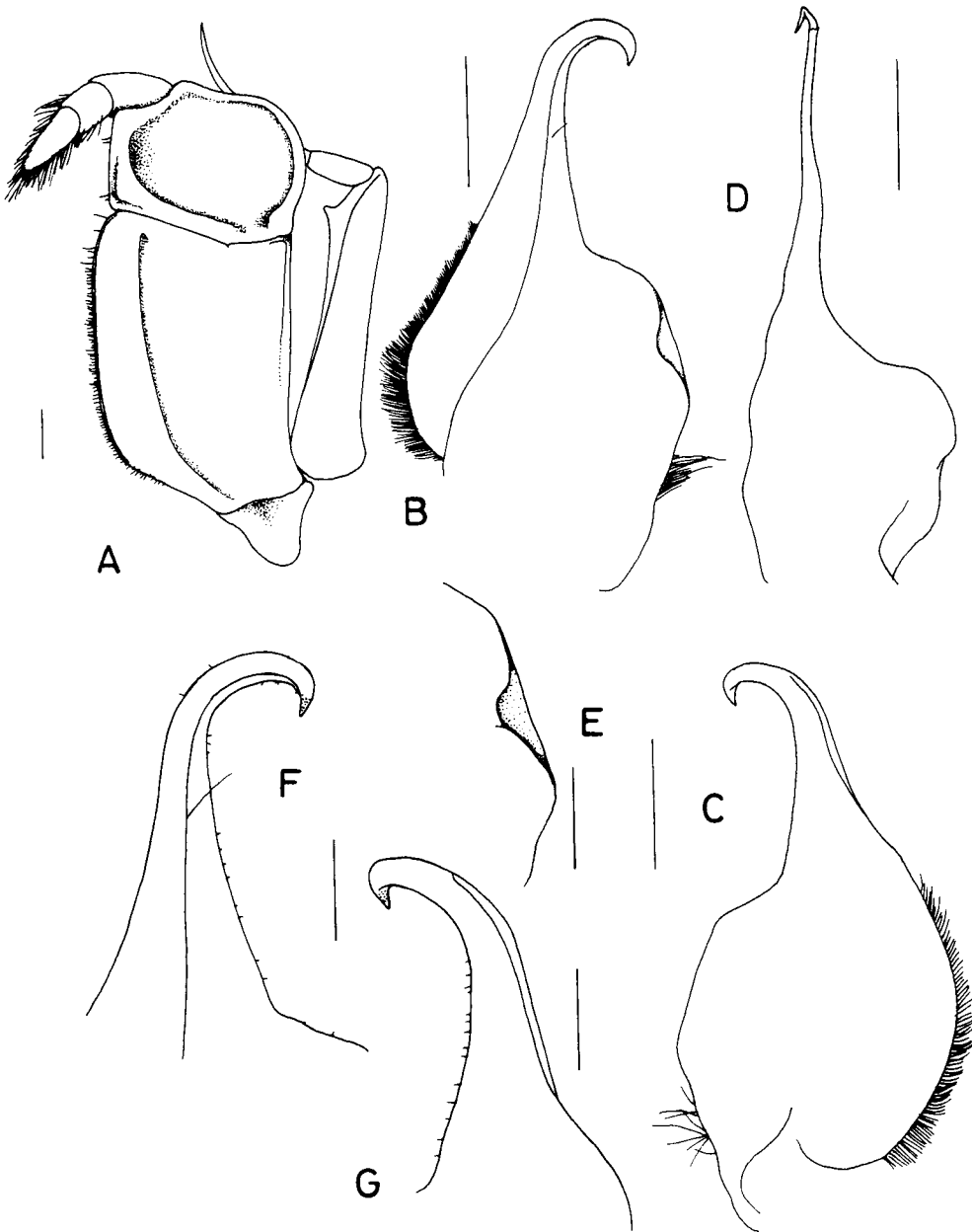


Fig. 66. *Somanniathelphusa phetchaburi* spec. nov., holotype, ♂ (33.8 by 26.5 mm) (ZRC 1991.1886). A, right third maxilliped; B-C, F, G, left G1; D, left G2. B, F, ventral view; C, G, dorsal view. Scales: A-D, 1.0 mm; E-G, 0.5 mm.

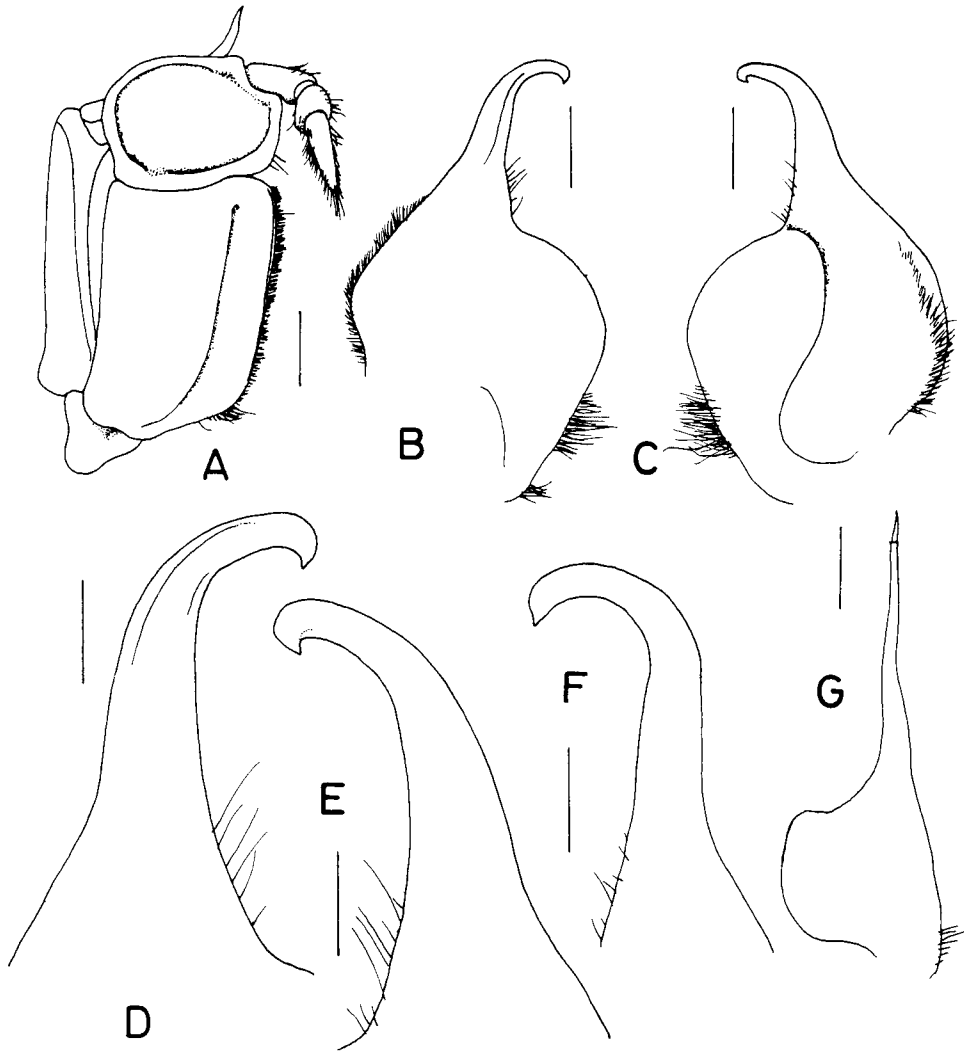


Fig. 67. *Somanniathelphusa chiangmai* spec. nov., holotype, ♂ (44.0 by 33.3 mm) (RMNH D 42347). A, right third maxilliped; B-E, left G1; F, left G2. B, D, ventral view; C, E, dorsal view. Scales: A, 2.0 mm; B, C, G, 1.0 mm; D-F, 0.5 mm.

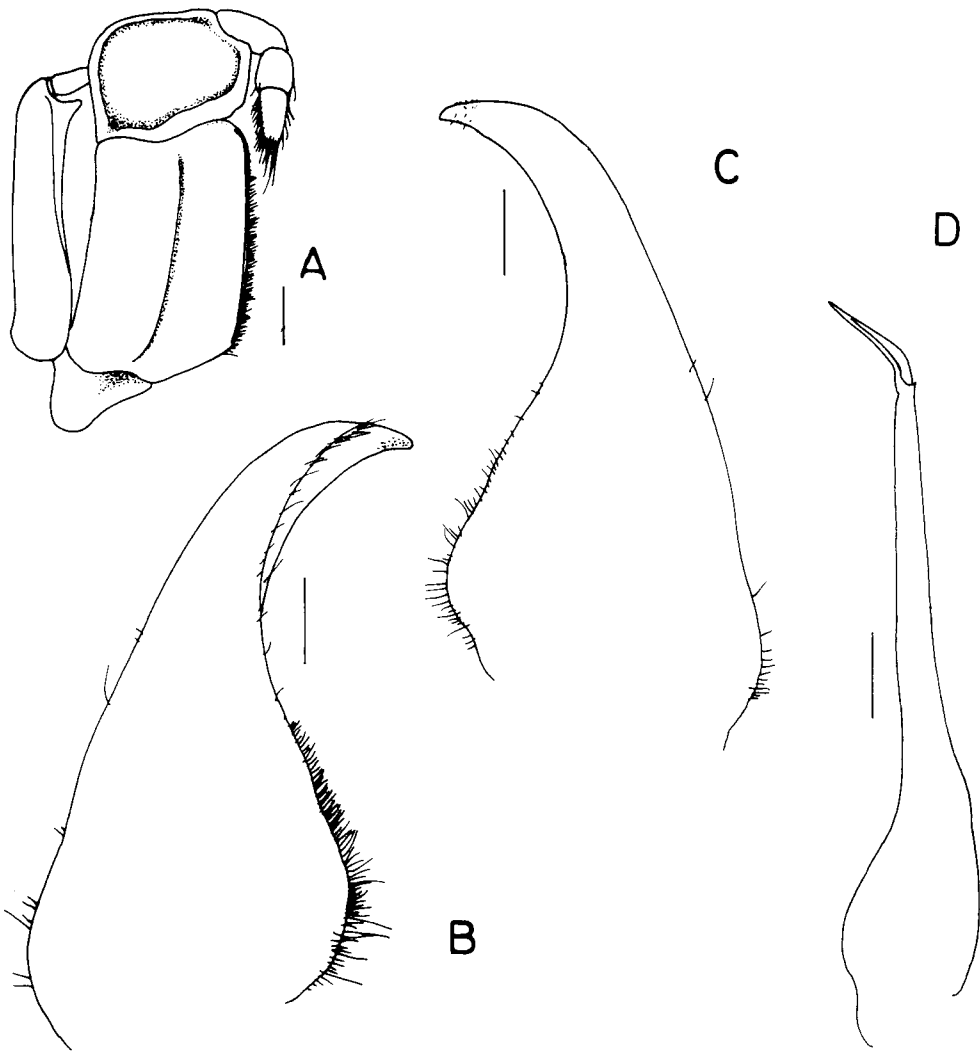


Fig. 68. *Heterothelphusa beauvoisi* (Rathbun, 1902), ♂ (17.2 by 14.3 mm) (ZRC 1991.1888). A, right third maxilliped; B, C, right G1; D, right G2. B, ventral; C, dorsal view. Scales: 2.0 mm.

Instructions to authors

Two zoological journals dealing with taxonomy, phylogeny and biogeography are published by the Nationaal Natuurhistorisch Museum, Leiden: *Zoologische Mededelingen* (publications of less than about 40 pages) and *Zoologische Verhandelingen* (publications of more than about 40 pages). Papers in the Dutch language are published in the *Zoologische Bijdragen*. Large monographs may be published separately. Papers should be the result of research projects of the NNM or should be based entirely or for an important part on material in its collections.

Manuscripts submitted should be in English and on DD-diskette: MS-DOS 5.25 inch in Wordperfect 4.2 or Wordstar, or Macintosh 3.5 inch in MacWrite, Write-Now (maximum file size ca 100 K), or Wordperfect (Mac-version). Papers in other languages are accepted only in special cases, after prior consultation, and if an ASCII version (maximum size per file of ca 35 K) is made available. In addition a printed version should be supplied. Other versions may be acceptable but the managing editor should be contacted first. Conversion of MS-DOS files may be problematical for special type style, special diacritics, and signs; these should be coded, unless they occur a few times only. Male and female signs have to be coded as "@" and "\$", respectively. Codes used should be presented on a separate sheet with the printed version of the manuscript. No indentations or hard pages are allowed. Hard returns only at the end of a paragraph and no division of words by a hyphen. No sentences or headings in capitals. Bold for headings and "syn. nov.", "stat. nov.", etc. is allowed. The manuscript should have the following sequence: title, abstract (including key words), contents (for larger papers only), introduction, main text, acknowledgements, references, illustrations (if not inserted in the text), and for larger papers a taxonomic index. The second couplets of the key should start with a short dash only ("-"). Acronyms should be explained. The arrangement within taxonomic species accounts consists of the name of the taxon (including author and year of description), a list of synonyms and references, a list of the material examined (under "Material.—"), description and notes if any.

Names of genera and species should be underlined, but italics may be used in Wordperfect 5.0 and higher. Author and date of family and lower category names should be mentioned in the main text. Numbers between one and ten in the main body of the text are written (except dates, which are written as "7.vii.1990"), from 11 onwards numerals are used. New synonymy should be indicated as "Bracon fuscatus Nees, 1834; Shenefelt, 1979:1179. **Syn. nov.**". If the author mentioned is not the author of the taxon then a semicolon (";") should be used between name of taxon and author mentioned.

Material should be listed as "Material.— Holotype, \$ (RMNH (+ number if available), "Spain, Soria, 21.vii.1989, M.J. Gijswijt"; 2 \$\$ (RMNH), "France, Versailles, 26.vi.1989, J. Hamon". Or "Material.— **Surinam**: 1\$. 1 @ (RMNH 3122), "Caribbean, ..."; 2 \$\$,".....".

References quoted in the text should be given as "according to Smith (1838: 136), White (1942: 23),....." and should not be in capitals. References should be arranged at the end of the paper in alphabetical order. Abbreviations of periodicals should be according to international standards. Books should be quoted as: "Kennard, A.S., 1926. Mollusca: i-xxiv, 1-447.— London." Papers as: "Schulz, W.A., 1911. Zweihundert alte Hymenoptera.— Zool. Annln 4 (12): 1-220.

Figures, maps and photographs are all considered figures and should be indicated by consecutive arabic numerals. The (sets of) figures should be 160 mm wide and at most 230 mm (and including caption 250 mm) high. Figures should show scale bars. Authors should indicate the position of the figures and tables in the printed copy of the manuscript. For lay-out of the text, etc. authors are referred to *Zoologische Verhandelingen* 256 and to *Zoologische Mededelingen* 64, and later issues.

