

Fig. 30. *Somanniathelphusa nani* Naiyanetr, 1984, ♂, (31.9 by 25.1 mm) (ZRC 1984.7715). A, dorsal view; B, frontal view; C, ventral view.

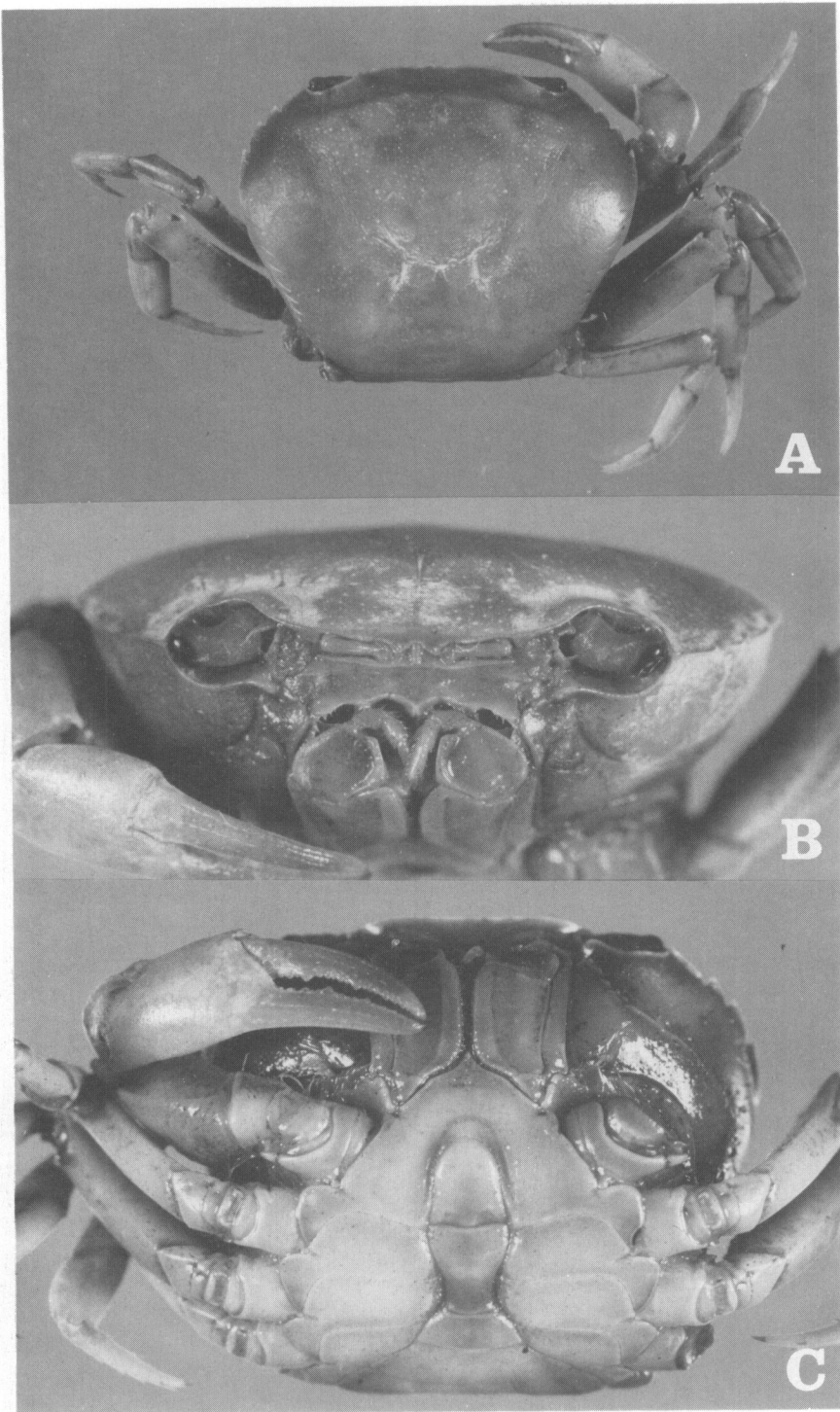


Fig. 31. *Somanniathelphusa phetchaburi* spec. nov., holotype, ♂ (33.8 by 26.5 mm) (ZRC 1991.1886). A, dorsal view; B, frontal view; C, ventral view.