

Fig. 28. *Somanniathelphusa fangensis* Naiyanetr, 1987, ♂, (28.3 by 21.8 mm) (ZRC 1984.7711). A, dorsal view; B, frontal view; C, ventral view.

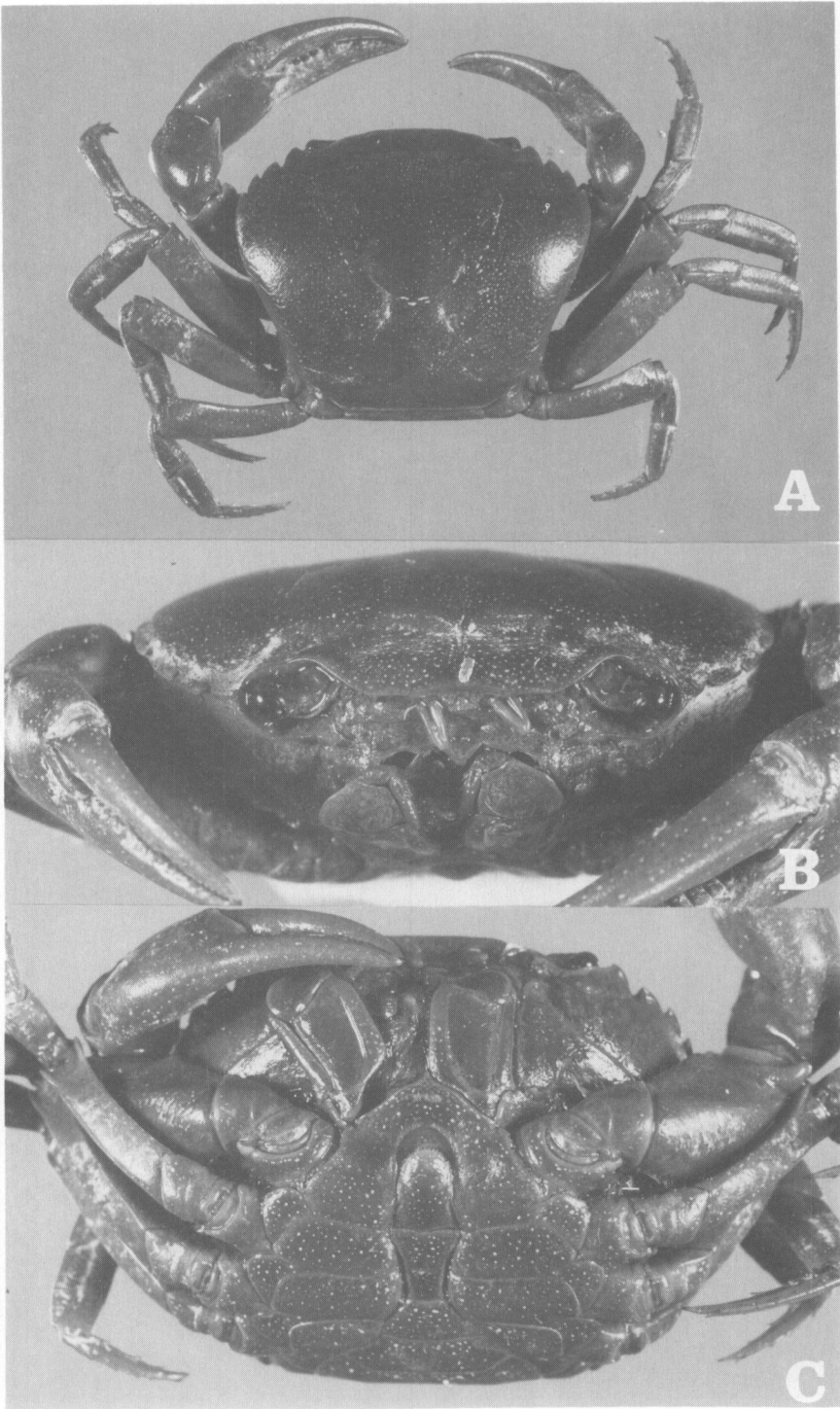


Fig. 29. *Somanniathelphusa denchii* Naiyanetr, 1984, ♂, (36.9 by 29.2 mm) (ZRC 1984.7709). A, dorsal view; B, frontal view; C, ventral view.