

Fig. 22. *Thaiphusa siritik* (Naiyanetr, 1992), paratype, ♂ (46.5 by 32.0 mm) (ZRC 1991.1880). A, dorsal view; B, frontal view; C, ventral view.

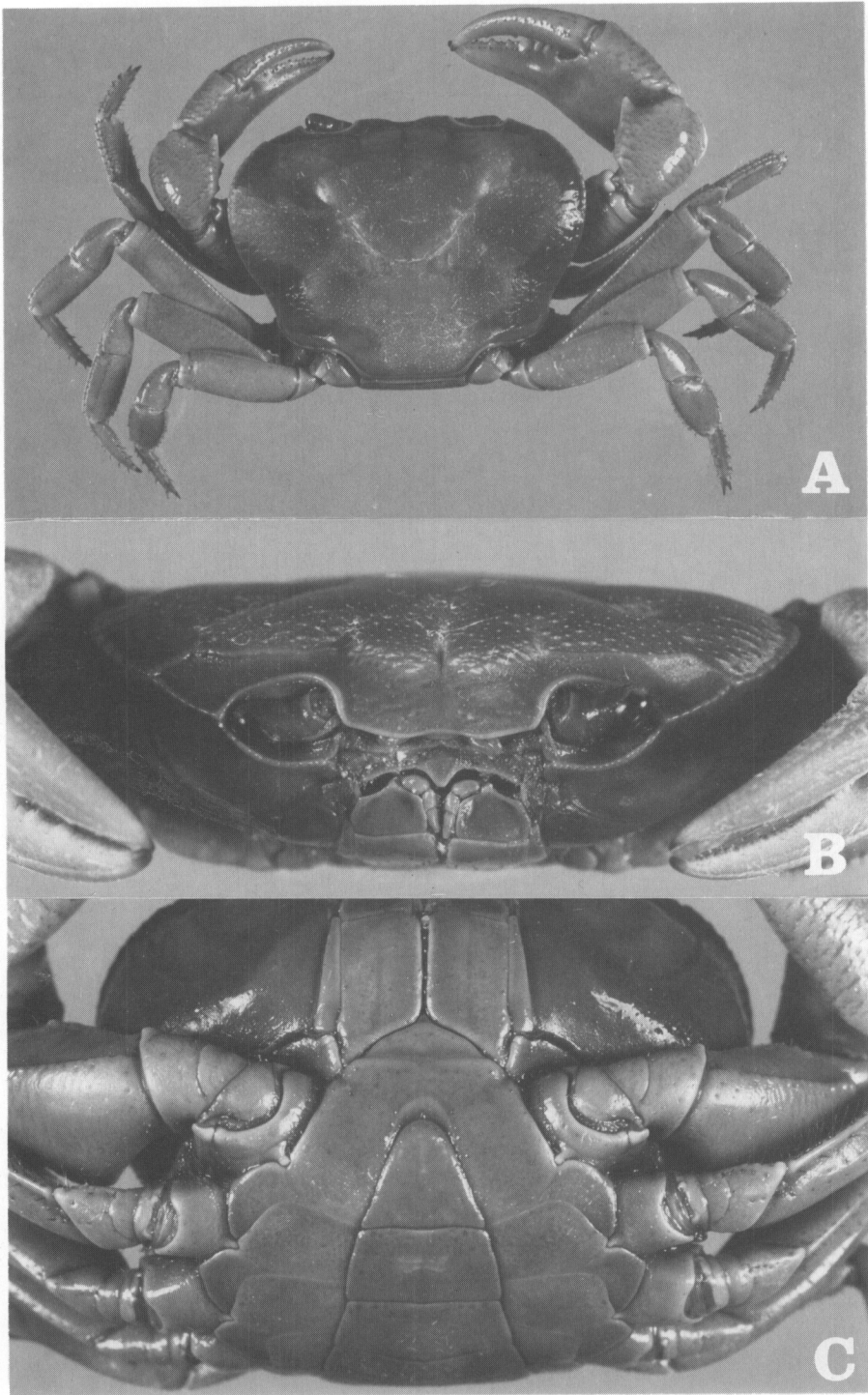


Fig. 23. *Demanietta tritrungensis* (Naiyanetr, 1986), paratype, ♂ (37.7 by 28.0 mm) (ZRC 1991.1857). A, dorsal view; B, frontal view; C, ventral view.