

Fig. 19. Right male pleopods, dorsal views. A, *Thaipotamon siamense* (A. Milne Edwards, 1869), lectotype, ♂ (43.5 by 33.2 mm) (MP); B, *Thaiphusa chantaburiense* (Chuensri, 1973), holotype, ♂ (35.8 by 27.6 mm) (KUMF); C, *Thaipotamon smitinandi* (Naiyanetr & Türkay, 1984), holotype, ♂ (43.3 by 31.6 mm) (KUMF).

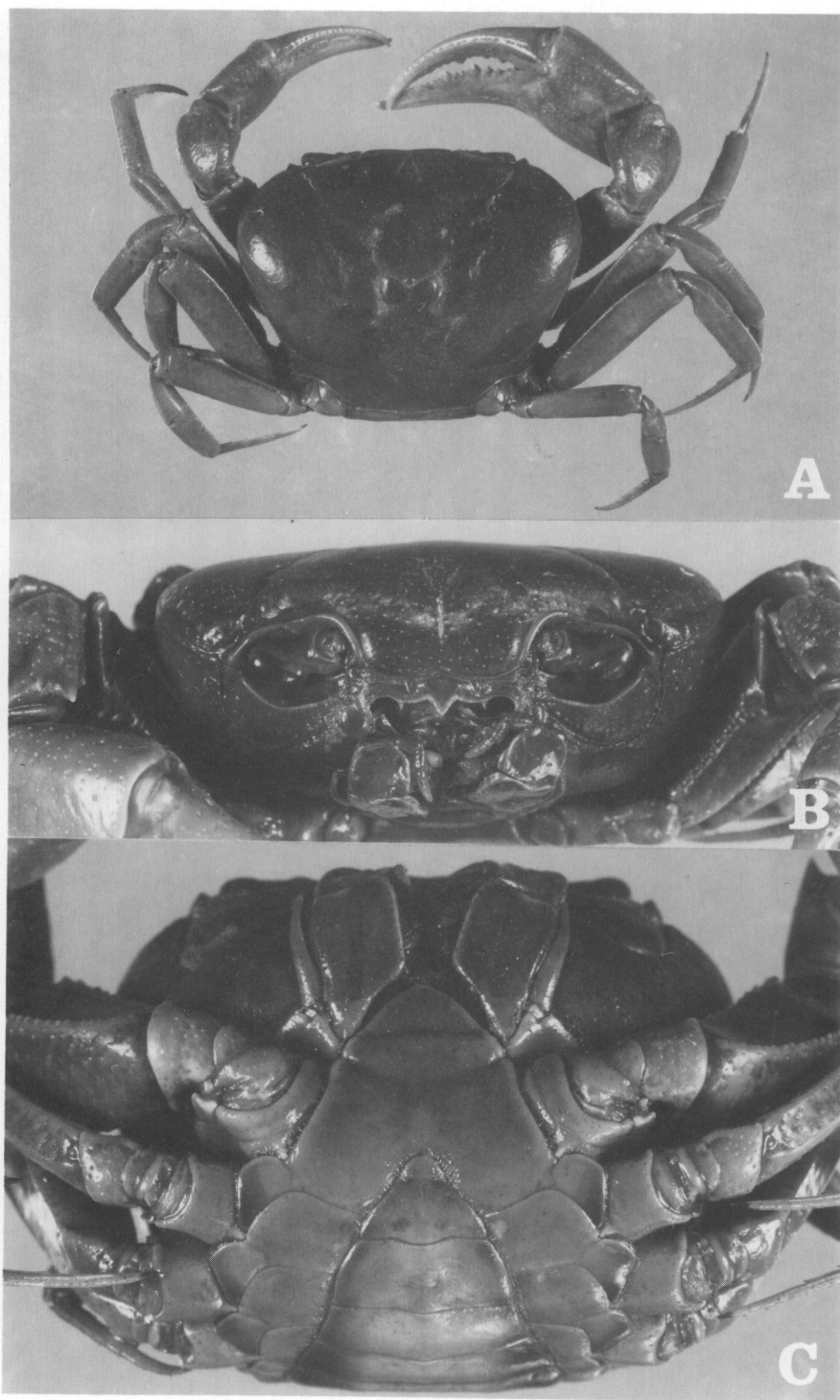


Fig. 20. *Thaipotamon varoonphornae* spec. nov., holotype, ♂ (43.5 by 32.2 mm) (RMNH D 42351). A, dorsal view; B, frontal view; C, ventral view.

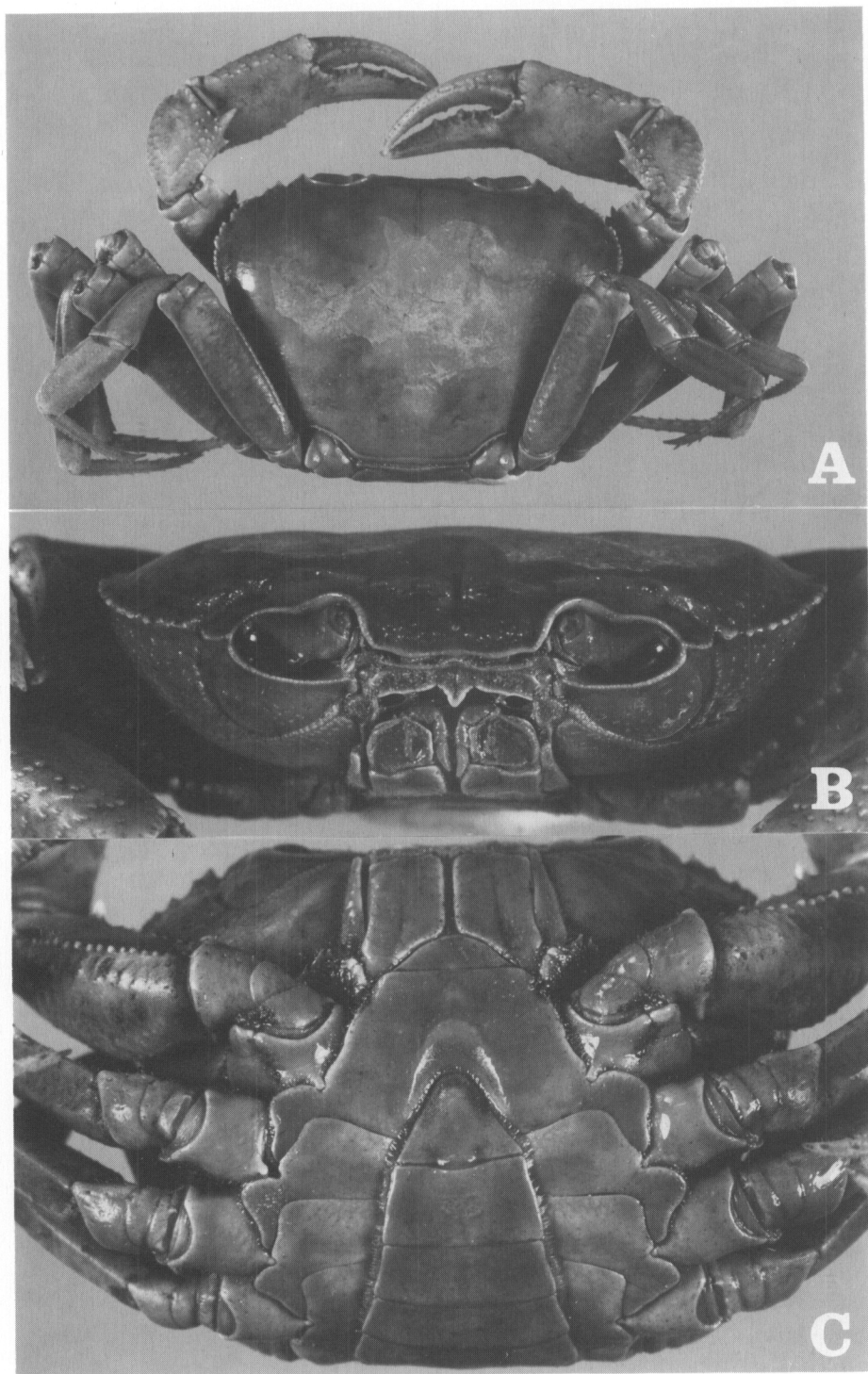


Fig. 21. *Kanpotamon duangkhaei* spec. nov., holotype, ♂ (49.8 by 35.5 mm) (CUMZ). A, dorsal view; B, frontal view; C, ventral view.