

Fig. 12. *Potamon lipkei* spec. nov., holotype, ♂ (56.8 by 42.8 mm) (RMNH D 42353). A, dorsal view; B, frontal view; C, ventral view.

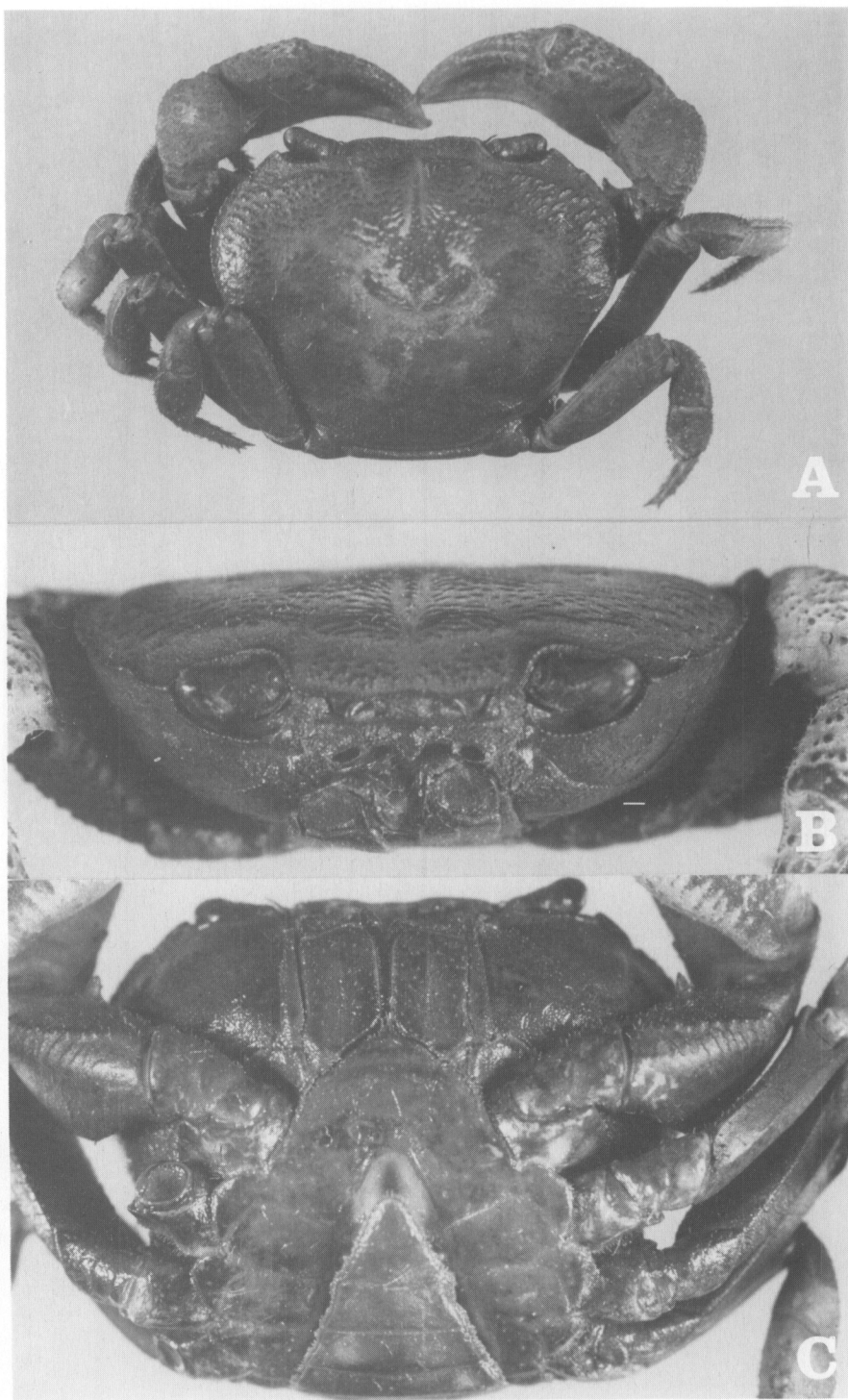


Fig. 13. *Potamon nan* spec. nov., holotype, ♂ (35.6 by 27.2 mm) (RMNH D 42345). A, dorsal view; B, frontal view; C, ventral view.