

Fig. 6. *Potamon ubon* spec. nov., holotype, ♂ (49.0 by 39.0 mm) (RMNH D 42349). A, dorsal view; B, frontal view; C, ventral view.

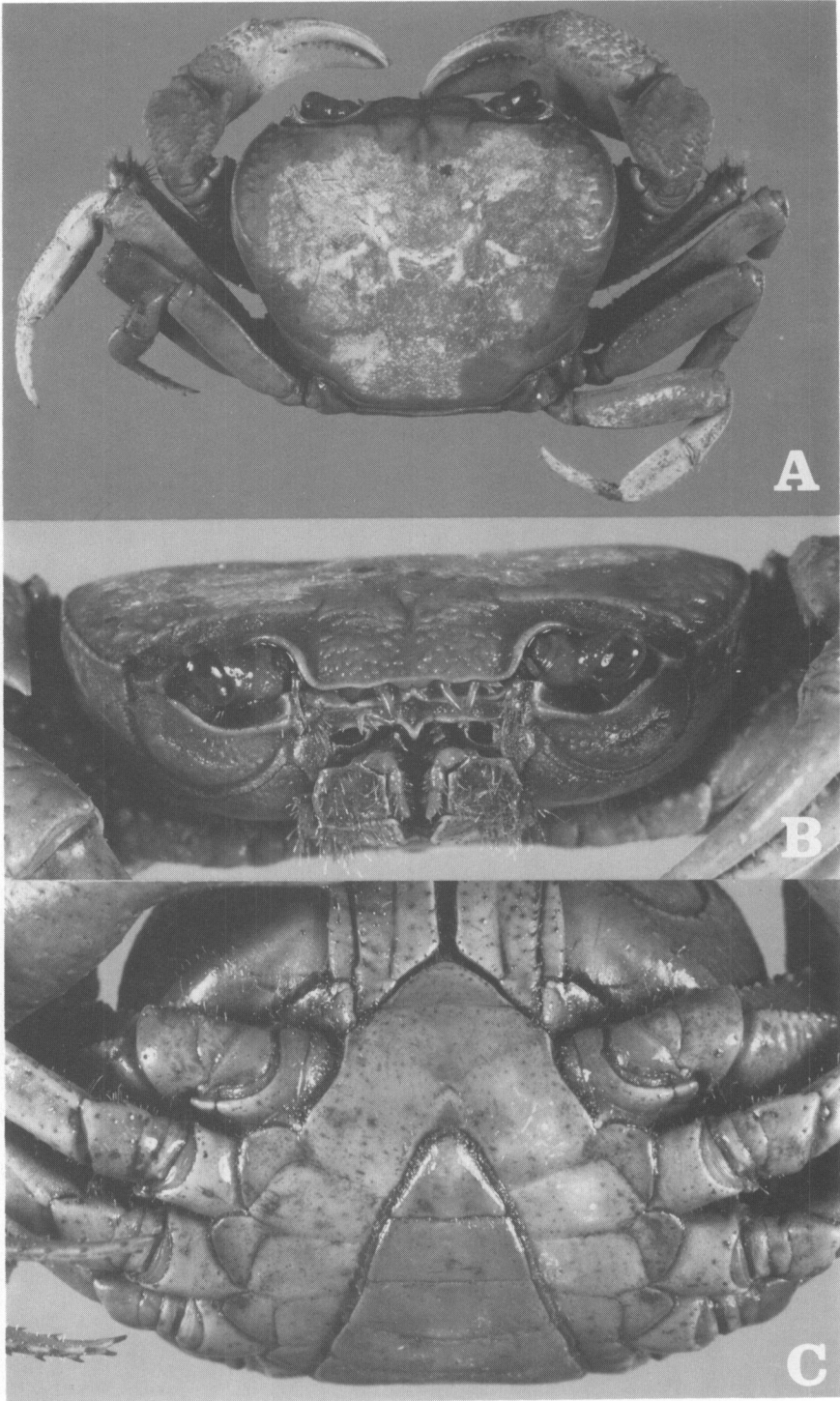


Fig. 7. *Potamon somchai* spec. nov., holotype, ♂ (46.8 by 37.5 mm) (RMNH D 42350). A, dorsal view; B, frontal view; C, ventral view.