

Fig. 1. *Potamon kanchanaburiense* Naiyanetr, 1992, holotype, ♂ (62.4 by 47.7 mm) (RMNH D 42352). A, dorsal view; B, frontal view; C, ventral view.

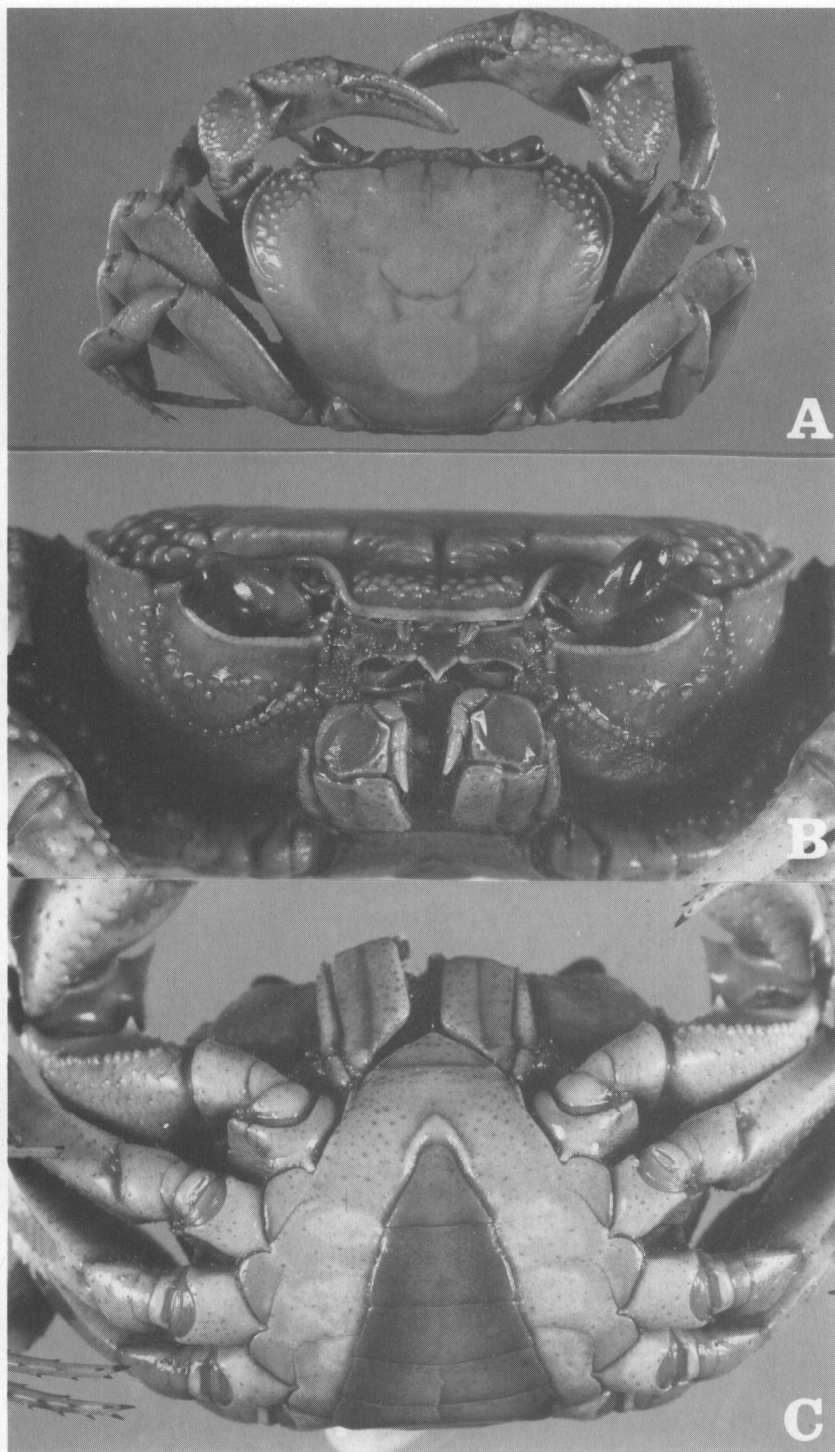


Fig. 2. *Potamon maesotense* Naiyanetr, 1992, holotype, ♂ (46.4 by 35.3 mm) (ZRC 1991.1836). A, dorsal view; B, frontal view; C, ventral view.

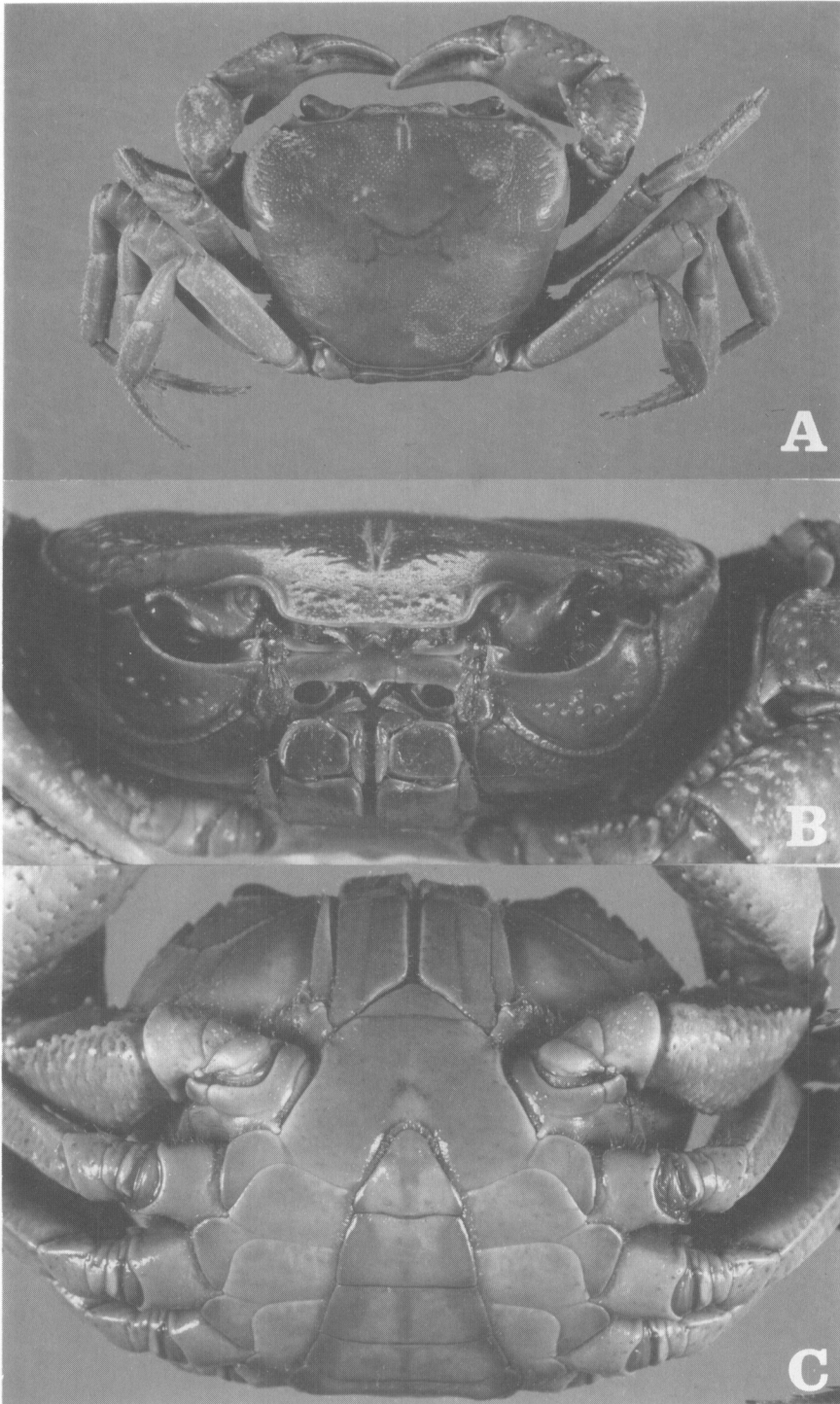


Fig. 3. *Potamon boonyaratae* (Naiyanetr, 1987), paratype, ♂ (46.1 by 37.2 mm) (ZRC 1991.1859). A, dorsal view; B, frontal view; C, ventral view.