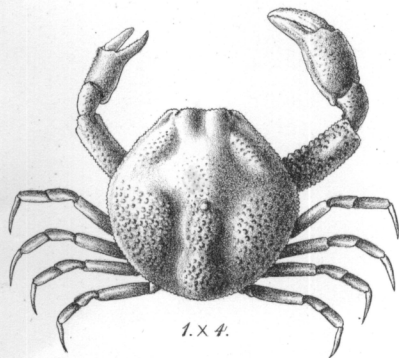
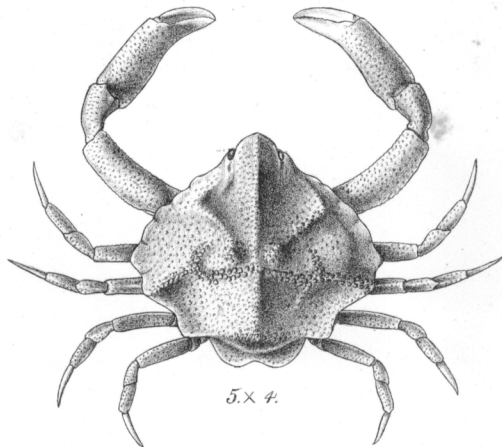


S. C. Mondul del. et. lith.

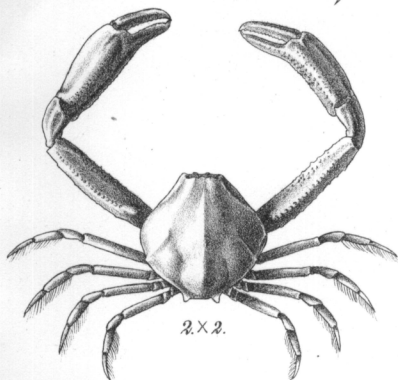
1. *Calappa pustulosa*, ♂. 2. *Calappa wood-masoni*, ♂. 3. *Pseudophilyra wood-masoni*, ♂.  
4. *Leucosia coralicola*, ♂. 5. *Leucosia sima*, ♀. 6. *Leucosia truncata*, ♀.  
7. *Pseudophilyra blanfordi*, ♂.



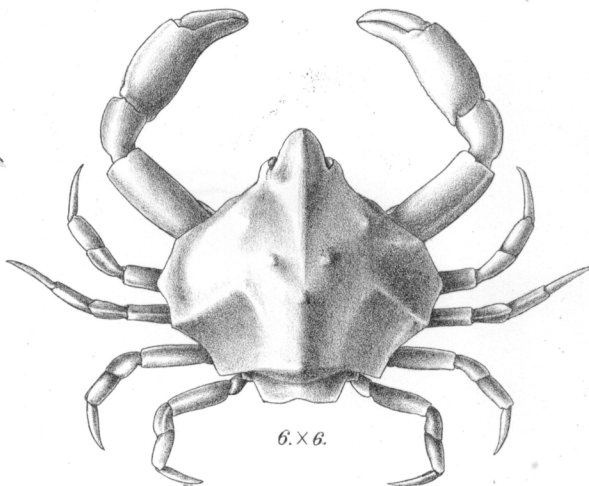
1. x 4.



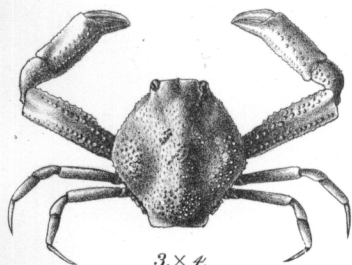
5. x 4.



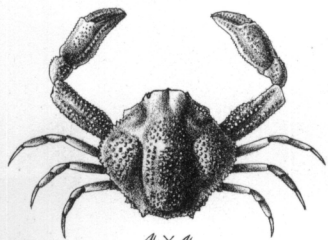
2. x 2.



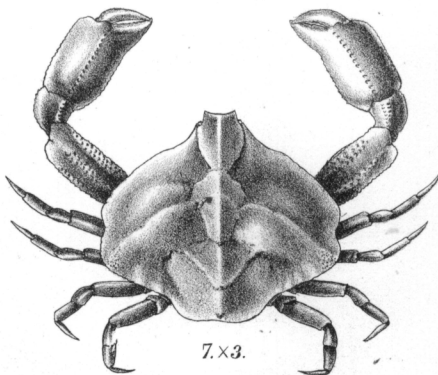
6. x 6.



3. x 4.



4. x 4.



7. x 3.

A.C. Chowdhary & S. C. Mondul del.

A.C. Chowdhary lith.

1. *Philyra coralliocla*, ♂. 2. *Philyra sexangula*, ♂. 3. *Ebalia wood-masoni*, ♂.

4. *Ebalia diadumena*, ♀.

5. *Nursia blanfordi*, ♀.

6. *Nursia nasuta*, ♂.

7. *Nursia persica*, ♀.

