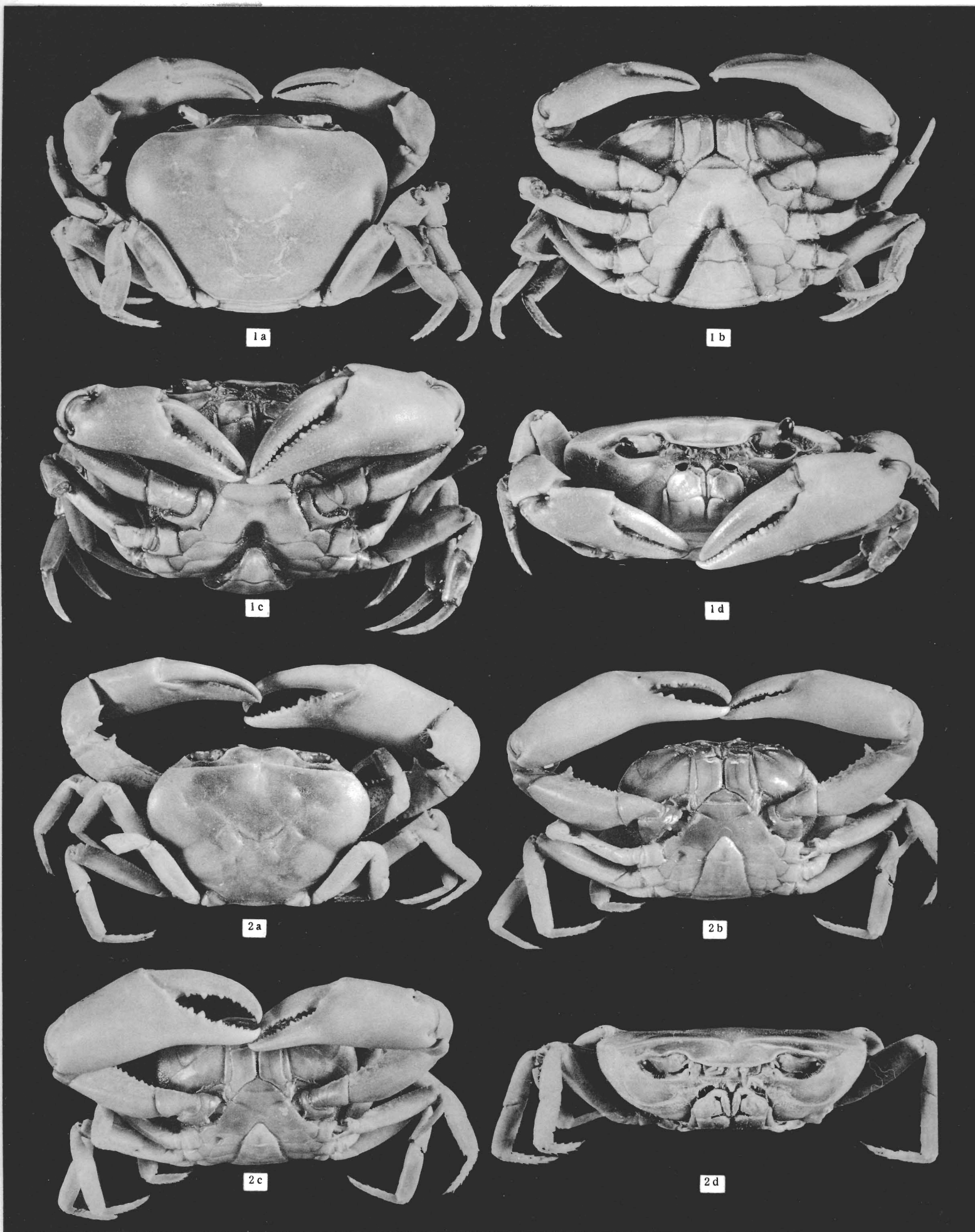


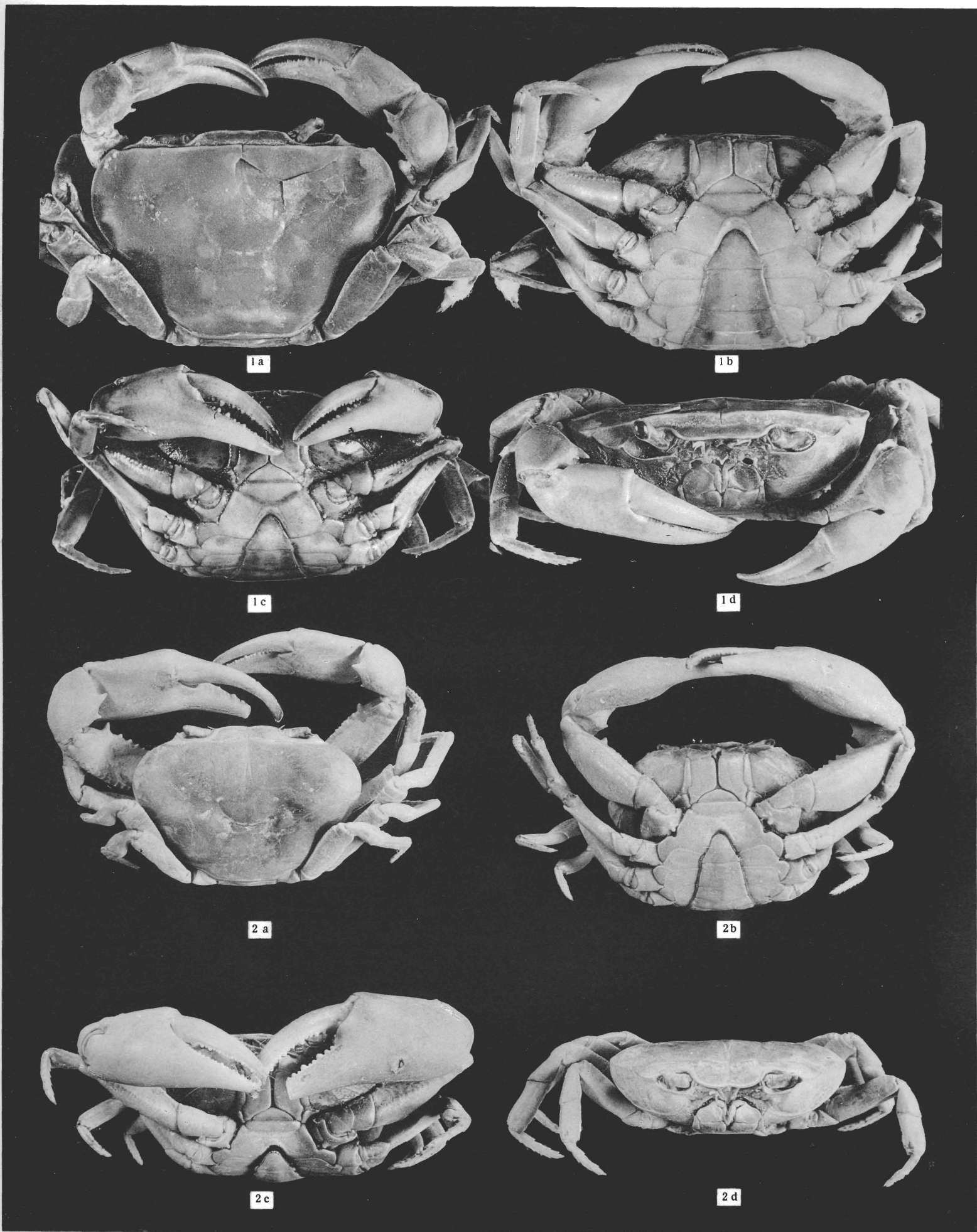
R. Bott. — Süßwasserkrabben.

XIII — 1-2. *Potamonautes (Acanthothelphusa) niloticus*; 3. *Pot. (Gerdalopotamonautes) gerdalensis*.



R. Bott. — Süßwasserkrabben.

XIV — 1. *Potamonautes (Tripotamonautes) loveridgei*; 2. *Pot. (Tripot.) walderi*.



R. Bott. — Süßwasserkrabben.

XV. — 1. *Potamonautes (Lobopotamonautes) stanleyensis*; 2. *Potamonautes (Lirrangopotamonautes) johnstoni johnstoni*.