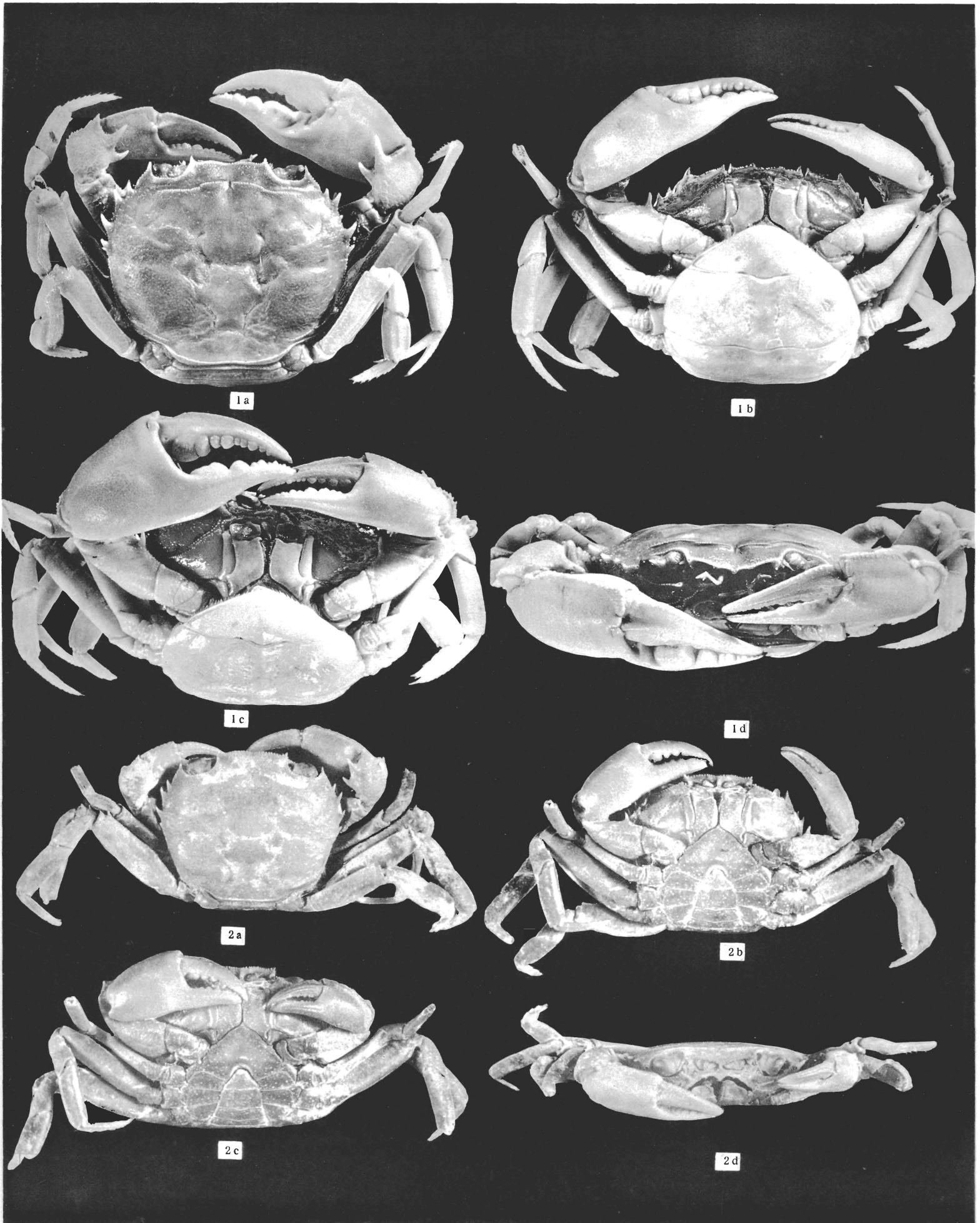


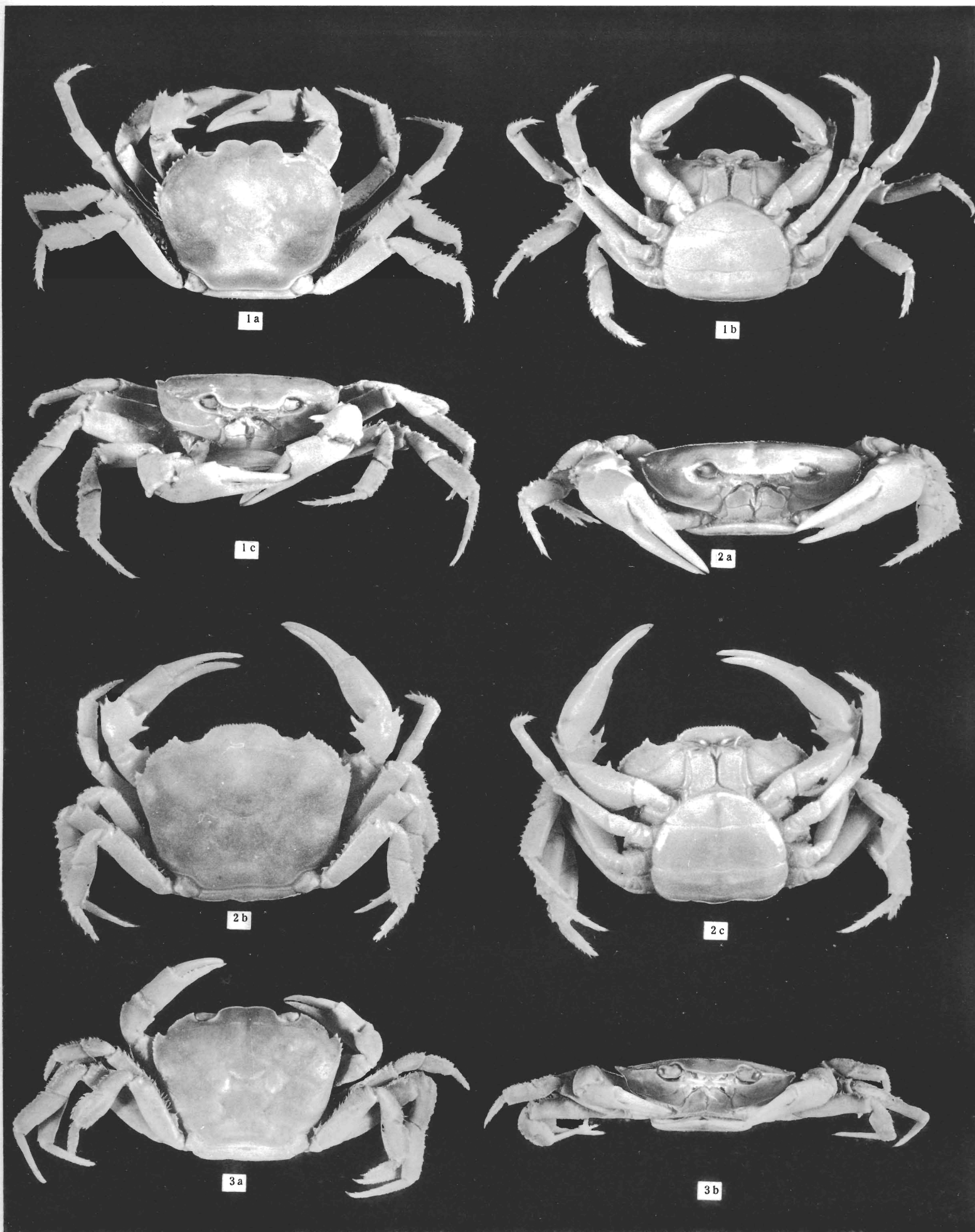
R. Bott. — Süsswasserkrabben.

I — 1. *Deckenia imitatrix imitatrix*; 2. *Deckenia imitatrix mitis*.



R. Bott. — Süßwasserkrabben.

II — 1. Potamonautes (Platythelphusa) armata armata; 2. Pot. (Platythelph.) armata conculcata.



R. Bott. — Süßwasserkrabben.

III — 1. *Potamonautes (Erimetopus) brazzae brazzae*; 2. *Pot. (Erim.) brazzae frontospinulosa*;
3. *Potamonautes (Longipotamonautes) vandenbrandeni*.