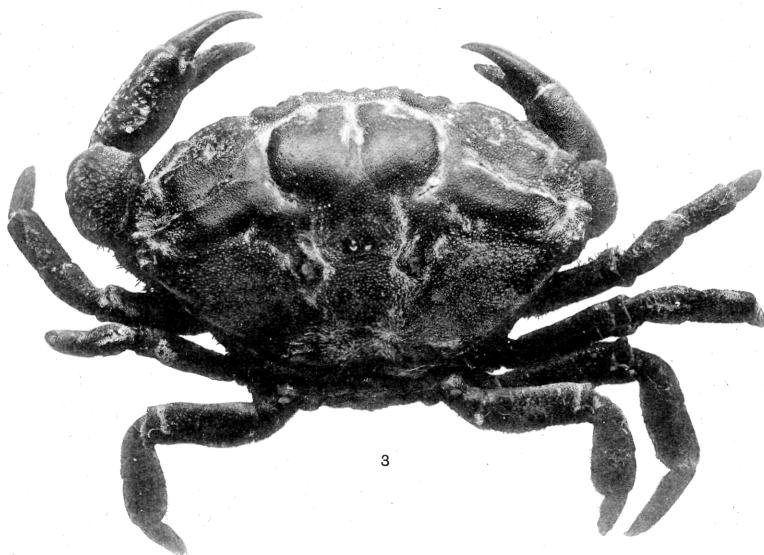




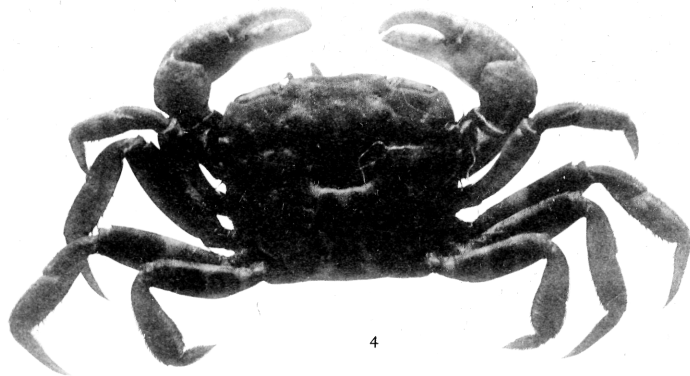
1



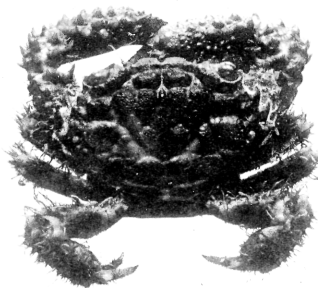
2



3



4



5

PLATE 3.

- Fig. 1. *Phymodius ungulatus*, ♂, Borabora, $\times 1\frac{1}{2}$.
Fig. 1a. Same, under side.
Fig. 2. *Phymodius ungulatus*, ♂, Tongatabu, $\times 1\frac{1}{2}$.
Fig. 2a. Same, under side.
Fig. 3. *Phymodius ungulatus*, ♂, Bonin Islands, $\times 1\frac{1}{2}$.
Fig. 3a. Same, under side.
Fig. 4. *Phymodius ungulatus*, ♂, Honolulu, $\times 1\frac{1}{2}$.
Fig. 4a. Same, under side.

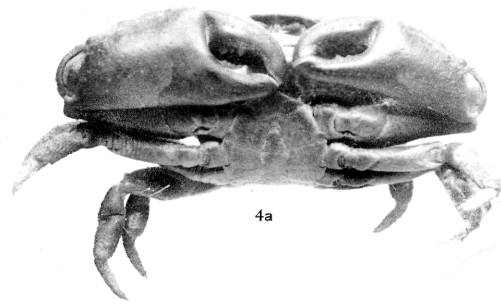
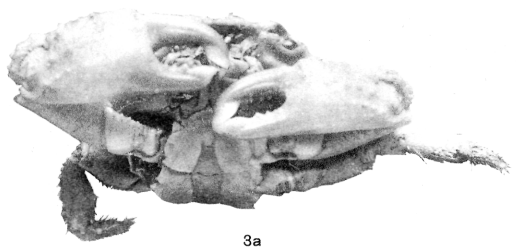
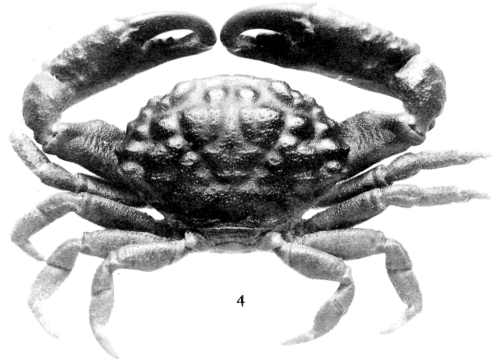
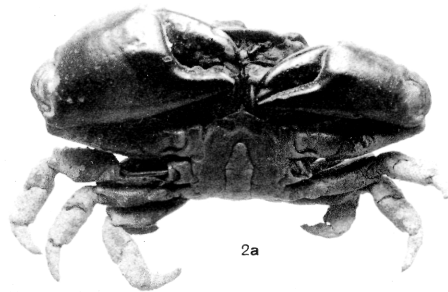
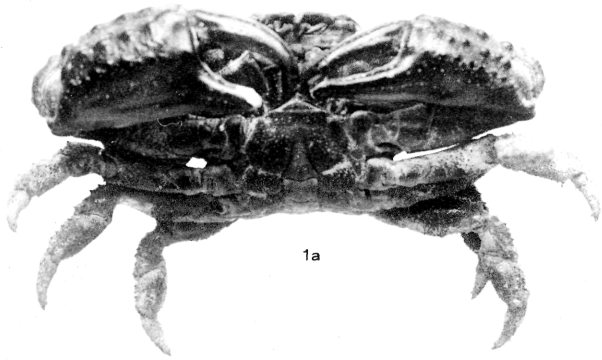
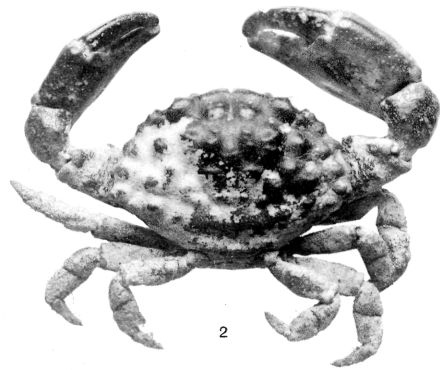
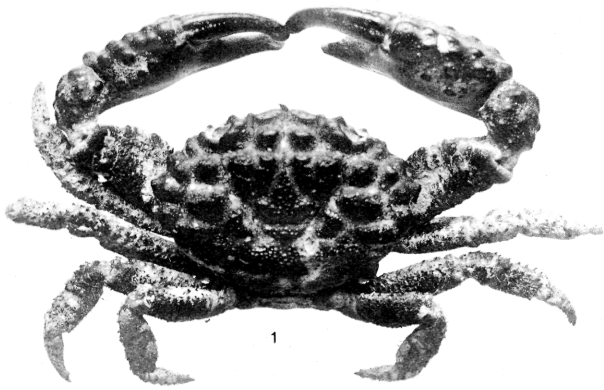




PLATE 4.

Fig. 1. *Pinnotheres angulatus*, 5. Latreille, X 17.

Fig. 2. Same, under side.

PLATE 4. Fig. 3. *Pinnotheres angulatus*, 7. Latreille, X 17.

Fig. 4. Same, under side.

Fig. 5. *Pinnotheres angulatus*, 8. Latreille, X 17.

Fig. 6. Same, under side.

Fig. 7. *Pinnotheres angulatus*, 9. Latreille, X 17.

Fig. 8. Same, under side.

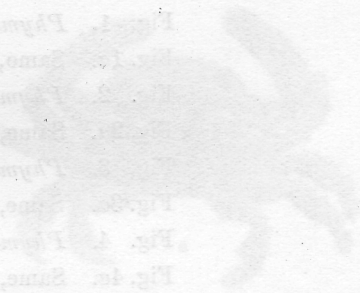
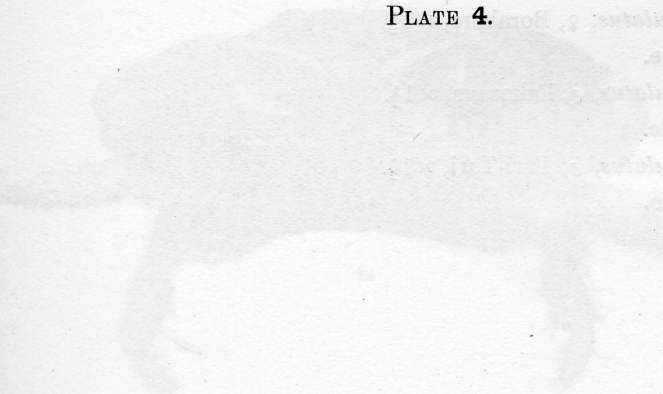
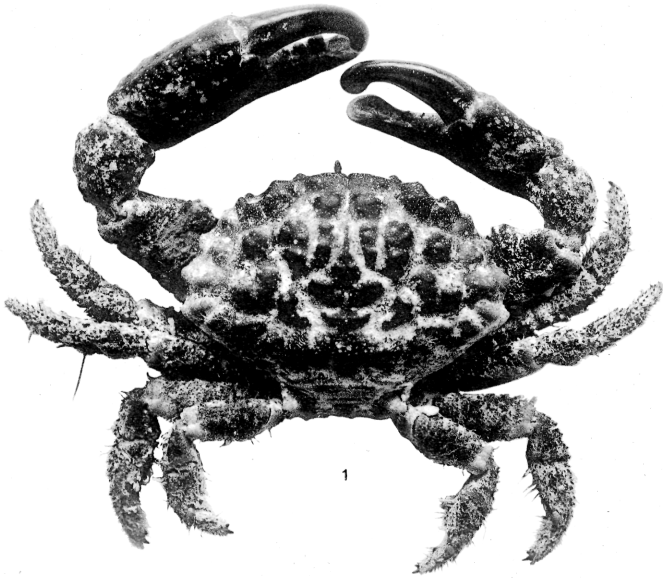
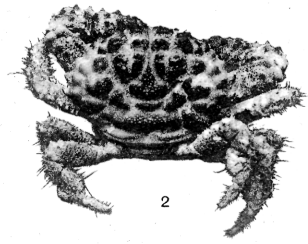


PLATE 4.

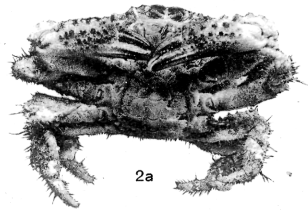
- Fig. 1. *Phymodius ungulatus*, ♂, Fakarava, $\times 1\frac{1}{2}$.
Fig. 1a. Same, under side.
Fig. 2. *Phymodius ungulatus*, ♀, Borabora, $\times 1\frac{1}{2}$.
Fig. 2a. Same, under side.
Fig. 3. *Phymodius ungulatus*, ♂, Fakarava, $\times 1\frac{1}{2}$.
Fig. 3a. Same, under side.
Fig. 4. *Phymodius ungulatus*, ♂, Tari-Tari, $\times 1\frac{1}{2}$.
Fig. 4a. Same, under side.



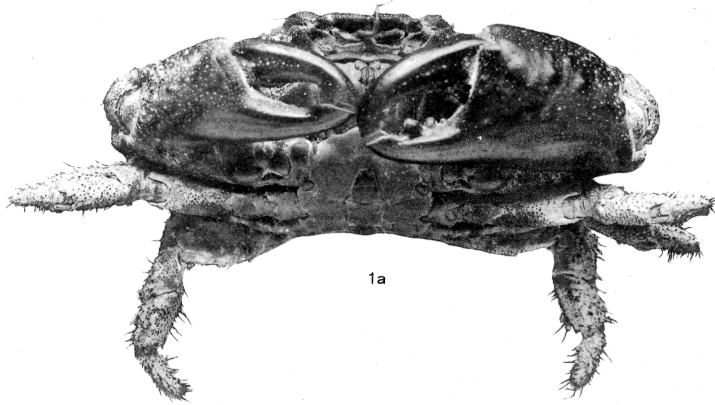
1



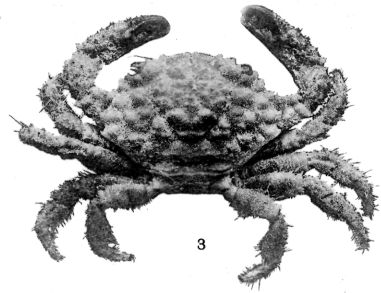
2



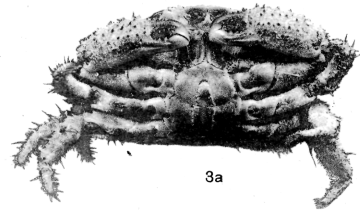
2a



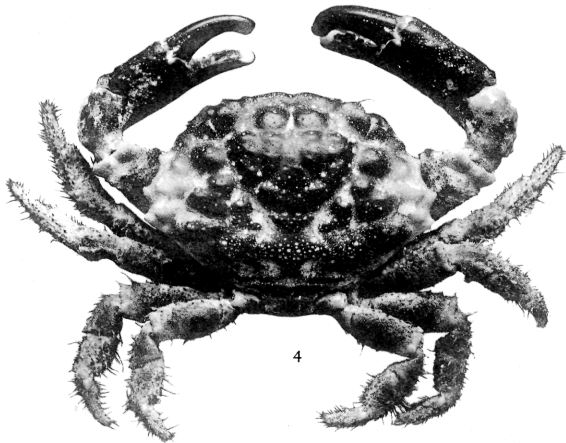
1a



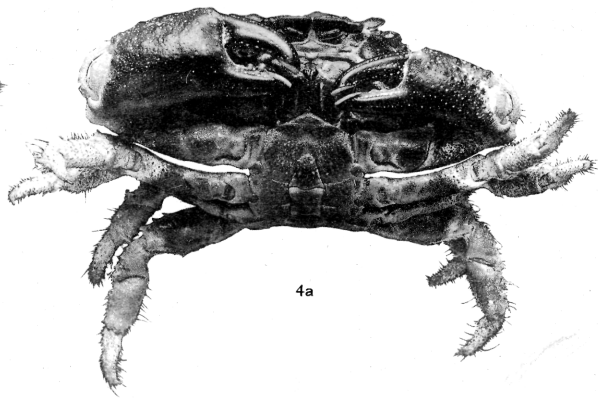
3



3a



4



4a



Fig. 1. *Parasquilla japonica*, ♀, type, nat. size.
 Fig. 2. *Parasquilla (Parasquilla) orientalis*, ♀, type, x 2½.
 Fig. 3. Same, under side.
 Fig. 4. *Parasquilla (Parasquilla) orientalis*, ♀, type, x 4. (Some legs broken off.)
 Fig. 5. *Parasquilla (Parasquilla) orientalis*, ♀, type, x 4.
 Fig. 6. *Parasquilla (Parasquilla) orientalis*, ♀, type, x 4.
 Fig. 7. *Parasquilla (Parasquilla) orientalis*, ♀, type, x 4.
 Fig. 8. *Parasquilla (Parasquilla) orientalis*, ♀, type, x 4. (Hind part forshaken.)
 Fig. 9. *Parasquilla (Parasquilla) orientalis*, ♀, type, x 4.

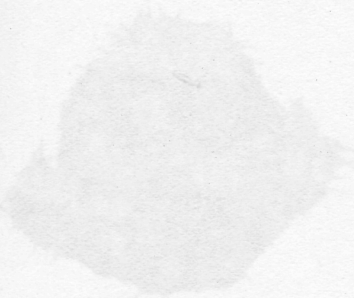


PLATE 5.

- Fig. 1. *Pachygrapsus fakaravensis*, ♂, type, nat. size.
Fig. 2. *Sesarma (Parasesarma) carolinensis*, ♂, type, $\times 2\frac{1}{2}$.
Fig. 2a. Same, under side.
Fig. 3. *Lophomicippa limbata*, ♀, type, $\times 4$. (Some legs broken off.)
Fig. 4. *Nucia gelida*, ♀, type, $\times 4$.
Fig. 5. *Cyclodius ornatus*, ♀, Fakarava, $\times 4$.
Fig. 6. *Parthenope (Parthenope) melana*, ♀, type, nat. size.
Fig. 7. *Scyramathia vesicularis*, ♂, type, $\times 1\frac{1}{2}$.
Fig. 8. *Cycloxanthops cavatus*, ♂, type, $\times 4$. (Hind part foreshortened.)
Fig. 9. *Thalamonyx parvidens*, ♂, type, $\times 1\frac{1}{2}$.

