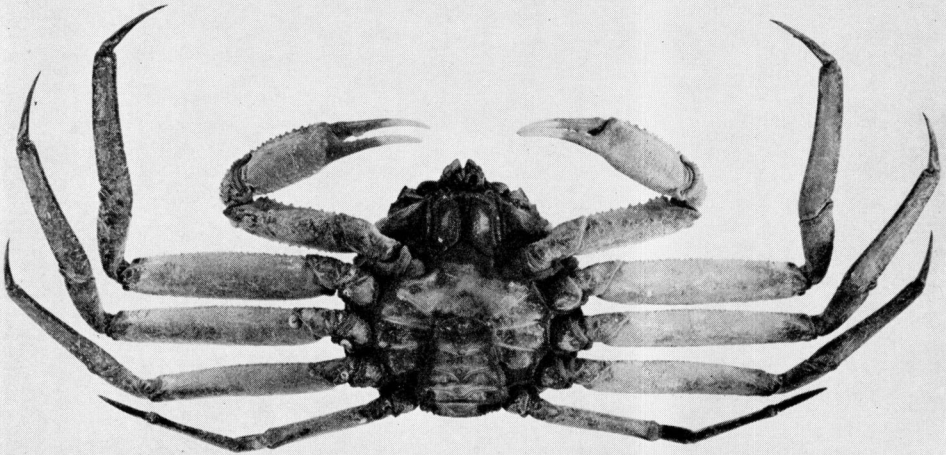
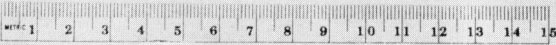


1

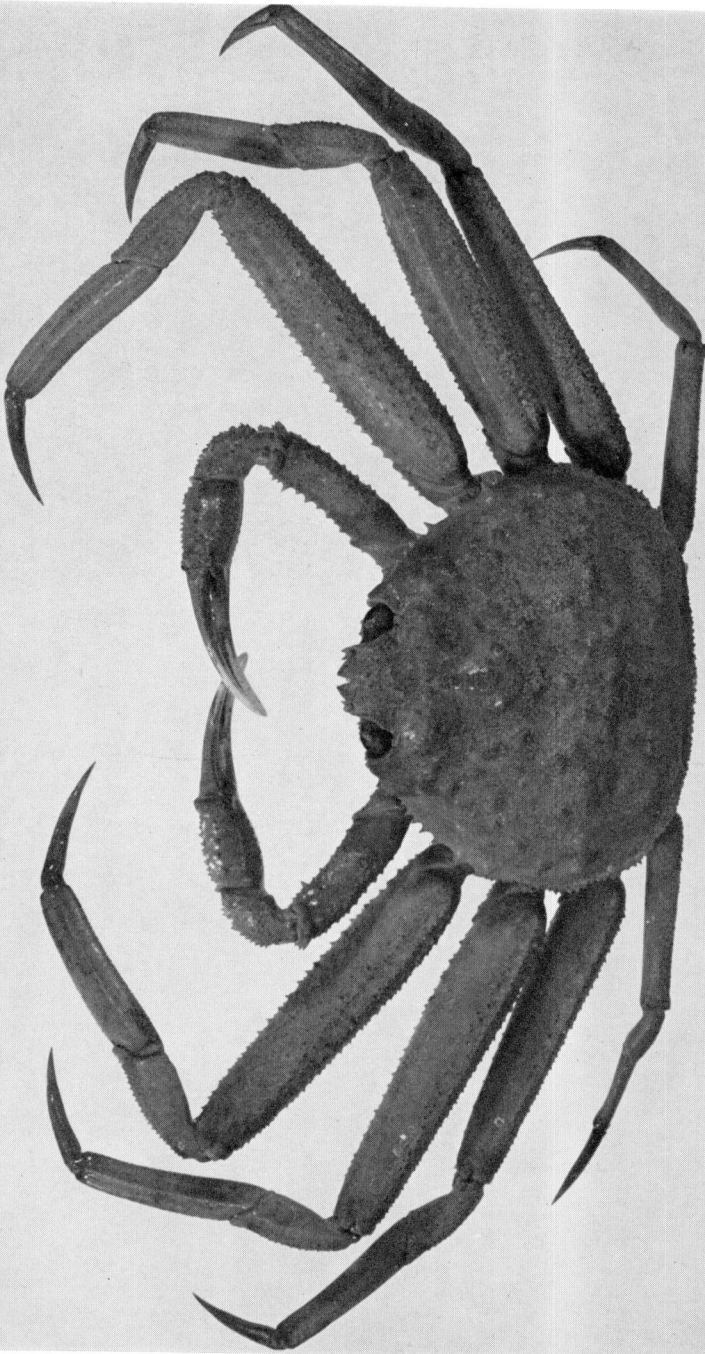


2



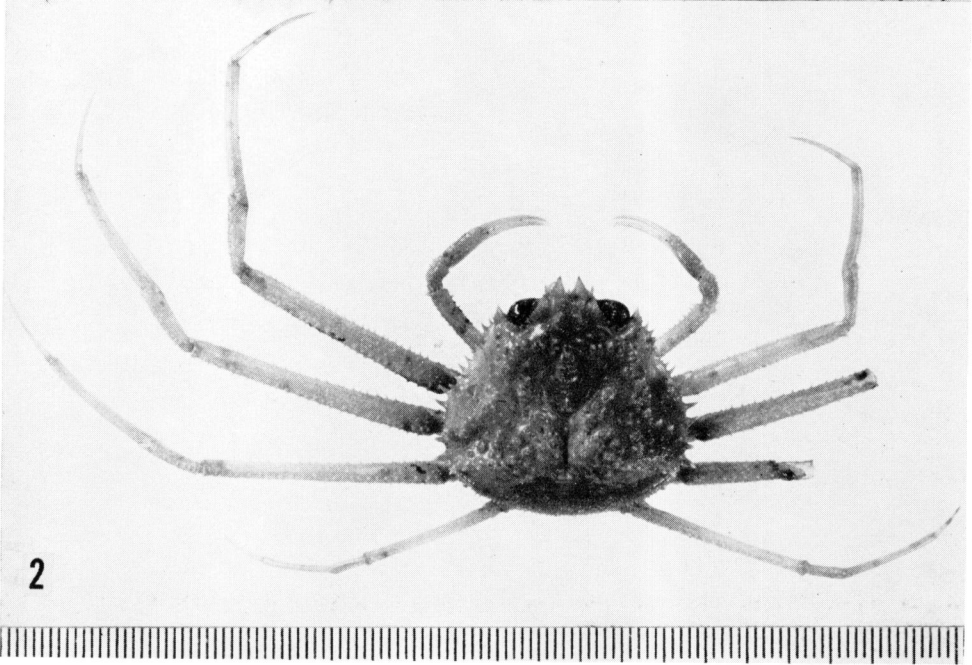
## PLATE 15

*Chionoecetes bairdi* Rathbun, male (Vancouver, B. C.),  
dorsal view.



## PLATE 16

- Fig. 1. *Chionoecetes angulatus* Rathbun, male (U.S.N.M. No. 15478), dorsal view.
- Fig. 2. *Chionoecetes tanneri* Rathbun, male (U.S.N.M. No. 47096), dorsal view.



## PLATE 17

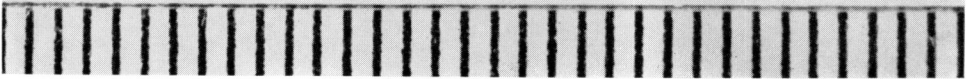
- Fig. 1. *Pithe picteti* (Saussure), male (*Velero III* Sta. 1088-40), dorsal view.
- Fig. 2. *Pithe sexdentata* Bell, male (*Velero IV* Sta. 1727-49), dorsal view.



1



2



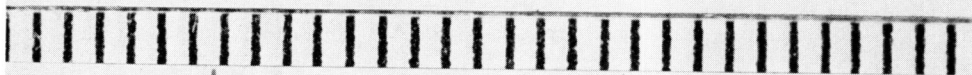
## PLATE 18

- Fig. 1. *Pitho quinquedentata* Bell, male (*Velero III* Sta. 5-33), dorsal view.
- Fig. 2. *Tyche lamellifrons* Bell, female (*Velero III* Sta. 498-36), dorsal view.

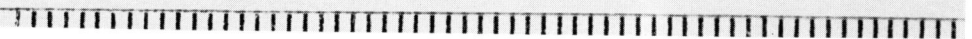




1



2



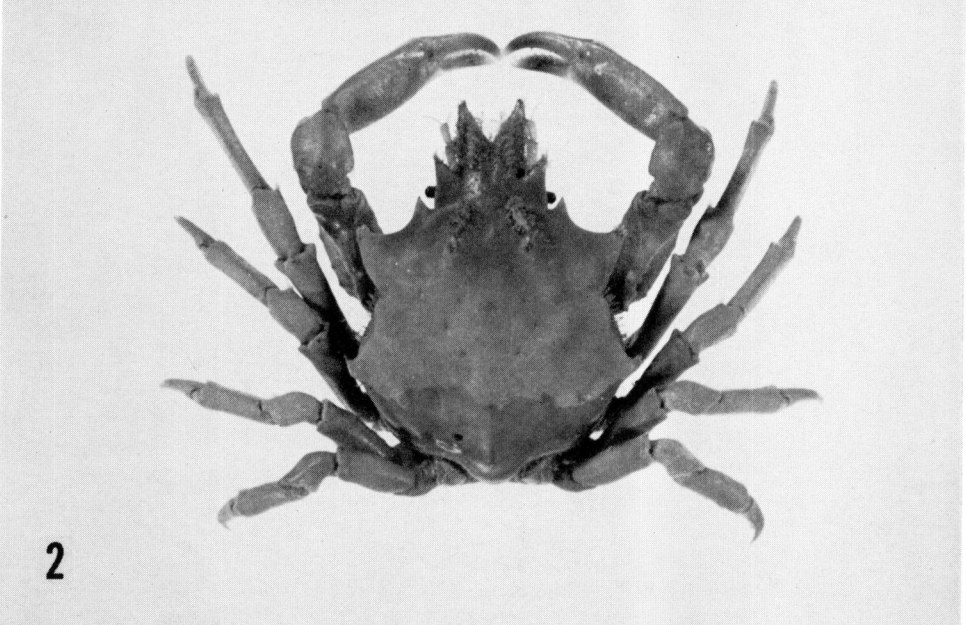
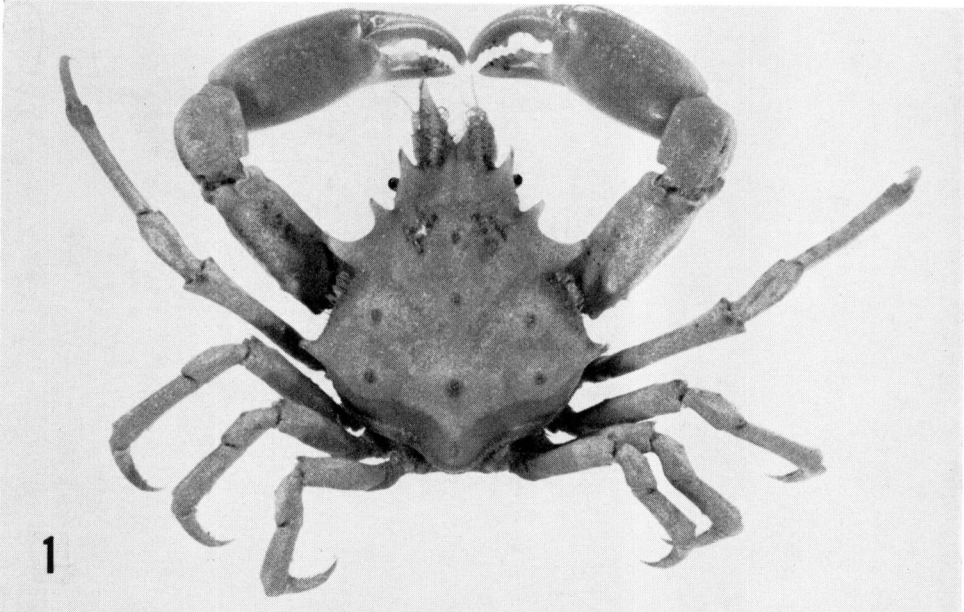
## PLATE 19

*Pugettia producta* (Randall), male (Hancock Sta. 1673-49),  
dorsal view; the last two legs on the right side regenerating.



## PLATE 20

- Fig. 1. *Pugettia richi* Dana, male (Hancock Sta. 1595-47), dorsal view.
- Fig. 2. *Pugettia gracilis* Dana, male (Hancock Sta. 1464-42), dorsal view.



## PLATE 21

- Fig. 1. *Pugettia dalli* Rathbun, male (*Velero III* Sta. 1224-41), dorsal view.
- Fig. 2. *Pugettia venetiae* Rathbun, female (*Velero III* Sta. 1177-40), dorsal view.



1



2



## PLATE 22

*Talampus nuttalli* (Randall), male (Southern California),  
dorsal view.



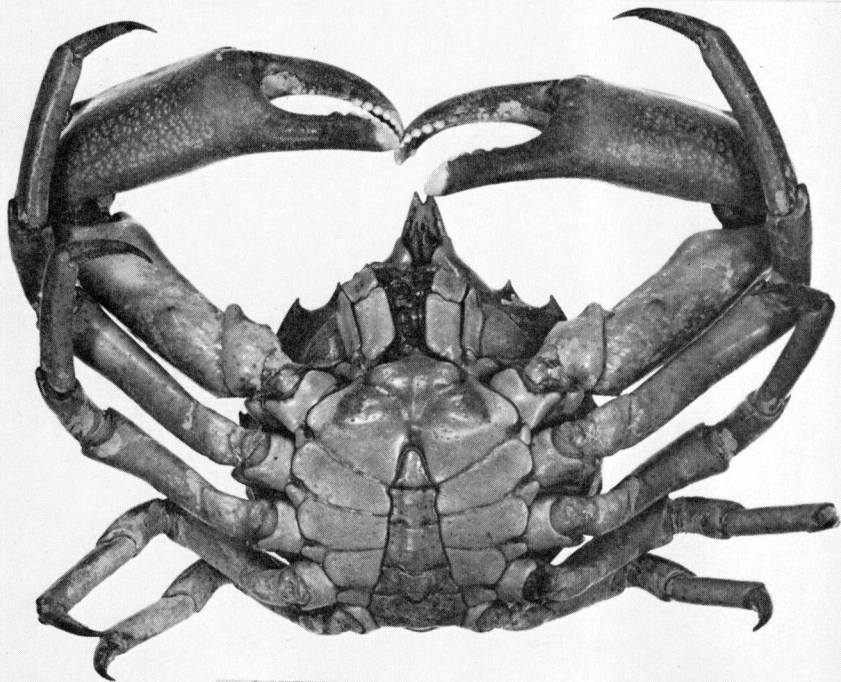


## PLATE 23

- Fig. 1. *Taliepus dentatus* (Milne Edwards), male (L.U.C.E. Sta. M98), dorsal view.
- Fig. 2. Same specimen, ventral view.



1



2

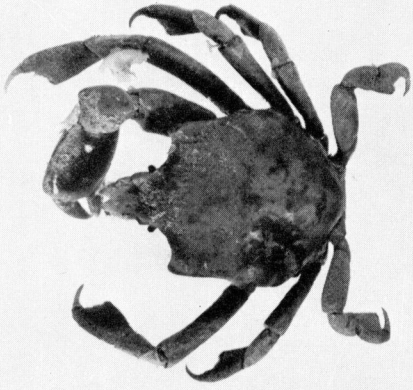
## PLATE 24

- Fig. 1. *Taliepus marginatus* (Bell), immature male (*Velero III* Sta. 371-35), dorsal view.
- Fig. 2. Same specimen, ventral view.



## PLATE 25

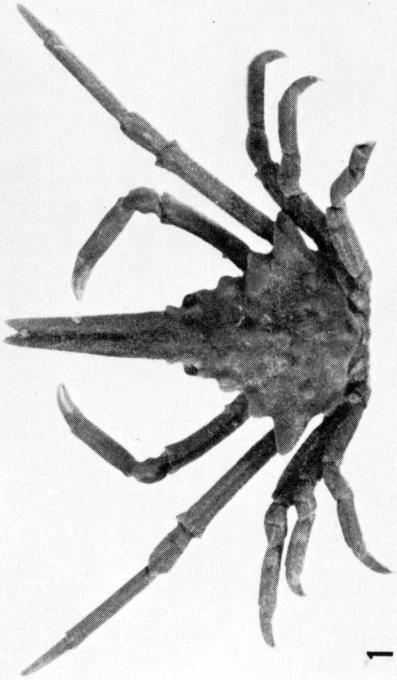
- Fig. 1. *Sphenocarcinus agassizi* Rathbun, male (*Velero III* Sta. 1037-40), dorsal view.
- Fig. 2. *Acanthonyx petiveri* Milne Edwards, male (*Velero III* Sta. 374-35), dorsal view.
- Fig. 3. *Mimulus foliatus* Stimpson, male (Sta. 1576-46), dorsal view.
- Fig. 4. *Leucippa pentagona* Milne Edwards, young male (U.S.N.M. No. 21899), dorsal view.



2



4



1

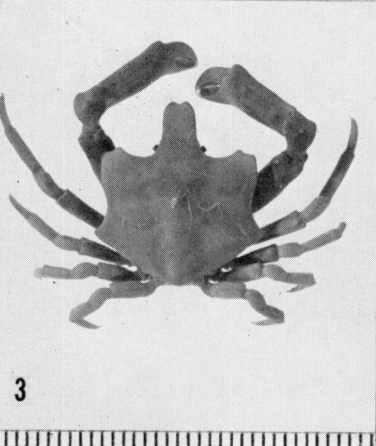
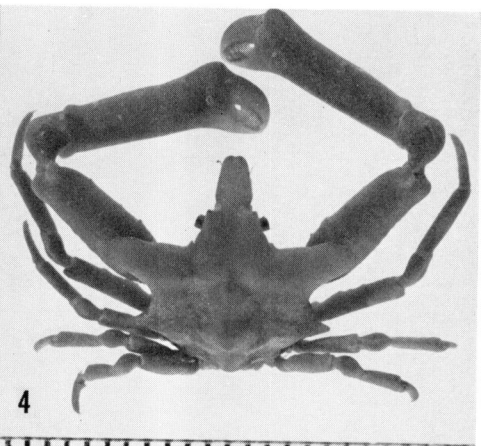


3

## PLATE 26

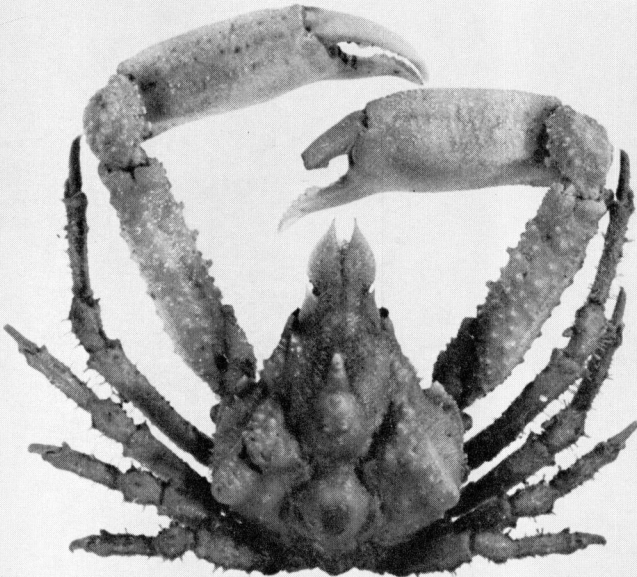
- Fig. 1. *Epiplatys minimus* Lockington, male (*Velero III* Sta. 1045-40), dorsal view.
- Fig. 2. *Epiplatys sulcirostris* Stimpson, female (*Velero IV* Sta. 1727-49), dorsal view.
- Fig. 3. *Epiplatoides hiltoni* (Rathbun), male (*Velero IV* Sta. 1961-50), dorsal view.
- Fig. 4. *Epiplatoides paradigmus*, new species, male holotype (Punta Cholla, Sonora) (A.H.F. No. 404), dorsal view.
- Fig. 5. *Epiplatoides murphyi* (Garth), female (*Askoy* Sta. 89), dorsal view.
- Fig. 6. *Eupleurodon peruvianus* (Rathbun), male (U.S.N.M. No. 70938), dorsal view.





## PLATE 27

- Fig. 1. *Scyra acutifrons* Dana, male (Hancock Sta. 1488-42), dorsal view.
- Fig. 2. *Loxorhynchus crispatus* Stimpson, female (*Valero III* Sta. 1232-41), dorsal view.



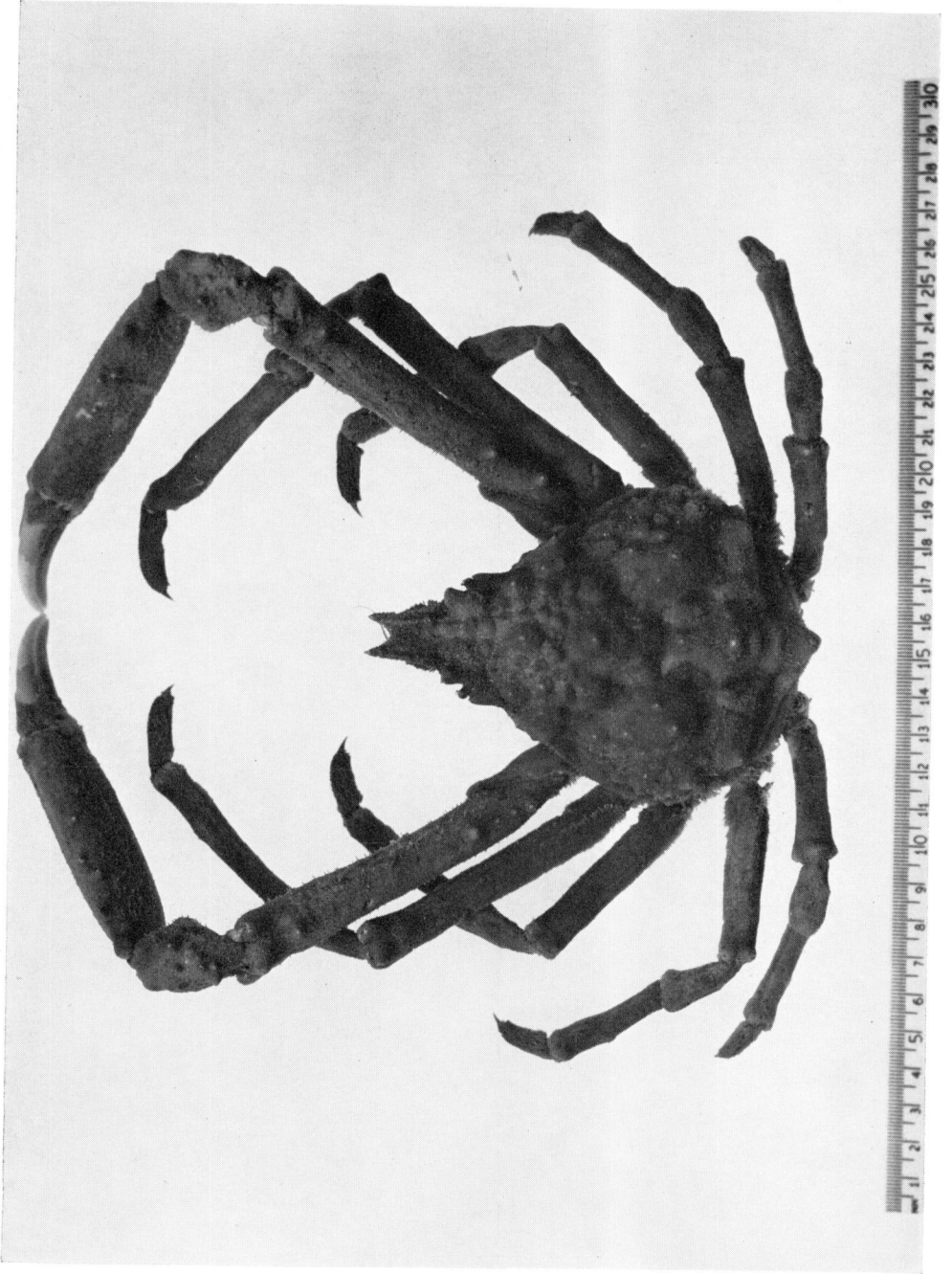
1



2

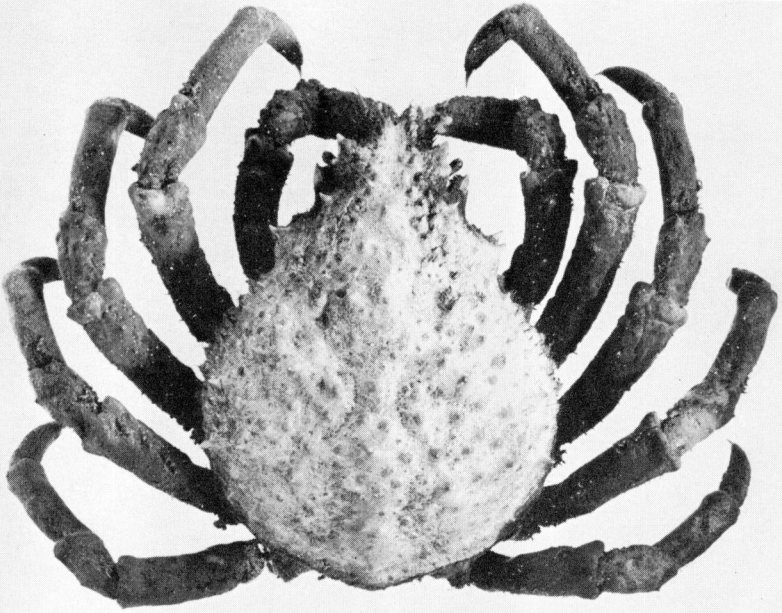
## PLATE 28

*Loxorhynchus crispatus* Stimpson, male (*Velero III* Sta. 1419-41), dorsal view.

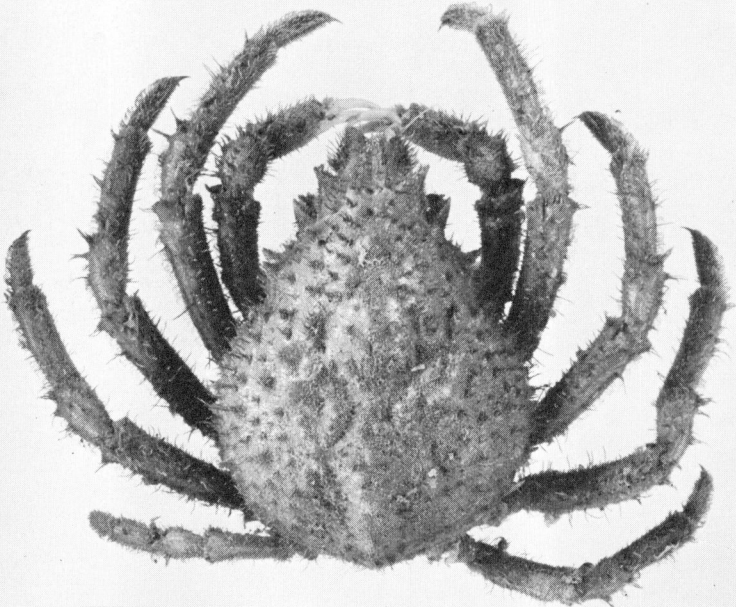


## PLATE 29

- Fig. 1. *Loxorhynchus grandis* Stimpson, female (*Velero III* Sta. 1127-40), dorsal view.
- Fig. 2. *Loxorhynchus grandis* Stimpson, young male (*Velero III* Sta. 1197-40), dorsal view.



1



2

## PLATE 30

- Fig. 1. *Chorilia longipes* Dana, male (Washington State), dorsal view.
- Fig. 2. *Chorilia longipes turgida* Rathbun, male (*Velero III* Sta. 1402-41), dorsal view.





## PLATE 31

- Fig. 1. *Rochinia vesicularis* (Rathbun), male (*Velero III* Sta. 1119-40), dorsal view.
- Fig. 2. *Pelia tumida* (Lockington), male (*Velero III* Sta. 1230-41), dorsal view.
- Fig. 3. *Pelia pacifica* A. Milne Edwards, male (Changamé, Panama), dorsal view.
- Fig. 4. *Pisoides edwardsi* (Bell), male (*Velero III* Sta. 820-38), dorsal view.