

ALLAN HANCOCK PACIFIC EXPEDITIONS

VOLUME 21

PART 2

BRACHYURA OF THE PACIFIC  
COAST OF AMERICA  
OXYRHYNCHA

TABLES AND PLATES

BY

JOHN S. GARTH



THE UNIVERSITY OF SOUTHERN CALIFORNIA PRESS  
LOS ANGELES, CALIFORNIA

1958

Hans G. Kuck

12. Feb. 1993

LACM NH

(213) 744-3450

ALLAN HANCOCK PACIFIC EXPEDITIONS

VOLUME 21

PART 2

BRACHYURA OF THE PACIFIC  
COAST OF AMERICA  
OXYRHYNCHA

TABLES AND PLATES

BY  
JOHN S. GARTH



THE UNIVERSITY OF SOUTHERN CALIFORNIA PRESS  
LOS ANGELES, CALIFORNIA  
1958



BRACHYURA OF THE PACIFIC COAST  
OF AMERICA  
OXYRHYNCHA

TABLES AND PLATES

BY  
JOHN S. GARTH

*To Hans Fack  
with sincere regards  
and best wishes.*

*John S. Garth  
Dec. 23, 1992*



## CONTENTS

Explanation of Plates . . . . .	503
Plates A-Z, Z <sub>1</sub> -Z <sub>4</sub> . . . . .	504
Plates 1-55 . . . . .	564
Explanation of Tables . . . . .	677
Tables . . . . .	678
Index . . . . .	839





# PLATES



## EXPLANATION OF PLATES

Plates of line drawings are lettered from A to Z and from Z<sub>1</sub> to Z<sub>4</sub>, with figure numbers on the last four plates running consecutively. Plates of photographs are numbered from 1 to 55.

All line drawings were made by Anker Petersen, former staff artist, Allan Hancock Foundation, with the exception of the following: plate D, figs. 1 and 6 of plate K, and plate Z by Glennis Sayers; figs. 3 and 3a of plate U by Jens W. Knudsen, Jr.

The photographs of the Majidae were taken by Daniel Chapman, William Fortin, and Royford George, successive staff photographers of the Allan Hancock Foundation. The photographs of the Parthenopidae and Hymenosomidae were taken by Mervin Slawson of Santa Maria, California. The photographs for plate 38 were provided by Dr. A. Panning of the Hamburg Museum. All photographs were mounted and where necessary retouched by Jens W. Knudsen, Jr.

Locality and depth data for the *Velero III* and *Velero IV* station numbers cited, and for stations made by shore-based Allan Hancock Foundation field parties, will be found by consulting the Table of Material Examined for the species concerned.

## PLATE A

## Inachinae

*Eucinetops rubellula* Rathbun

Male neotype (U.S.N.M. No. 74440)

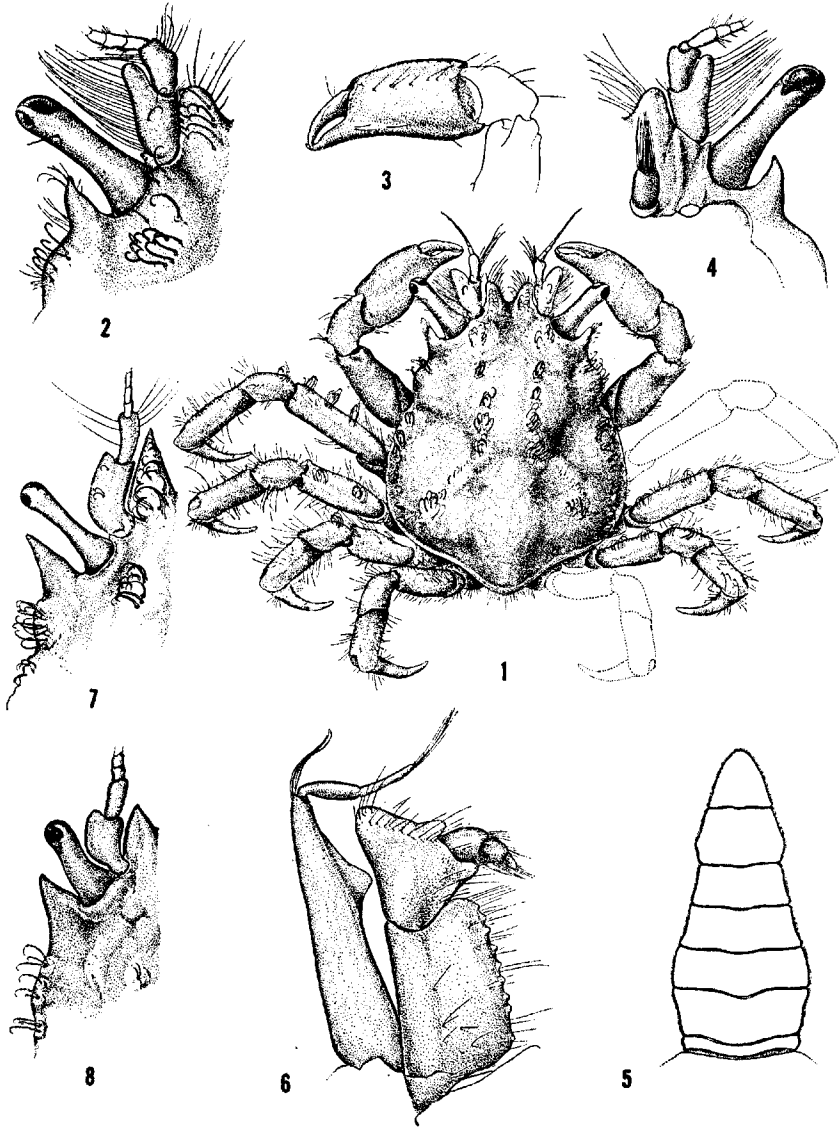
- Fig. 1. Dorsal view, x 8.
- Fig. 2. Dorsal view of orbit, x 14.5.
- Fig. 3. Left chela, x 11.
- Fig. 4. Ventral view of orbit, x 14.5.
- Fig. 5. Male abdomen, x 15.
- Fig. 6. Right outer maxilliped, x 29.

*Eucinetops lucasi* Stimpson

- Fig. 7. Dorsal view of orbit, x 6.

*Eucinetops panamensis* Rathbun

- Fig. 8. Dorsal view of orbit, x 7.5.

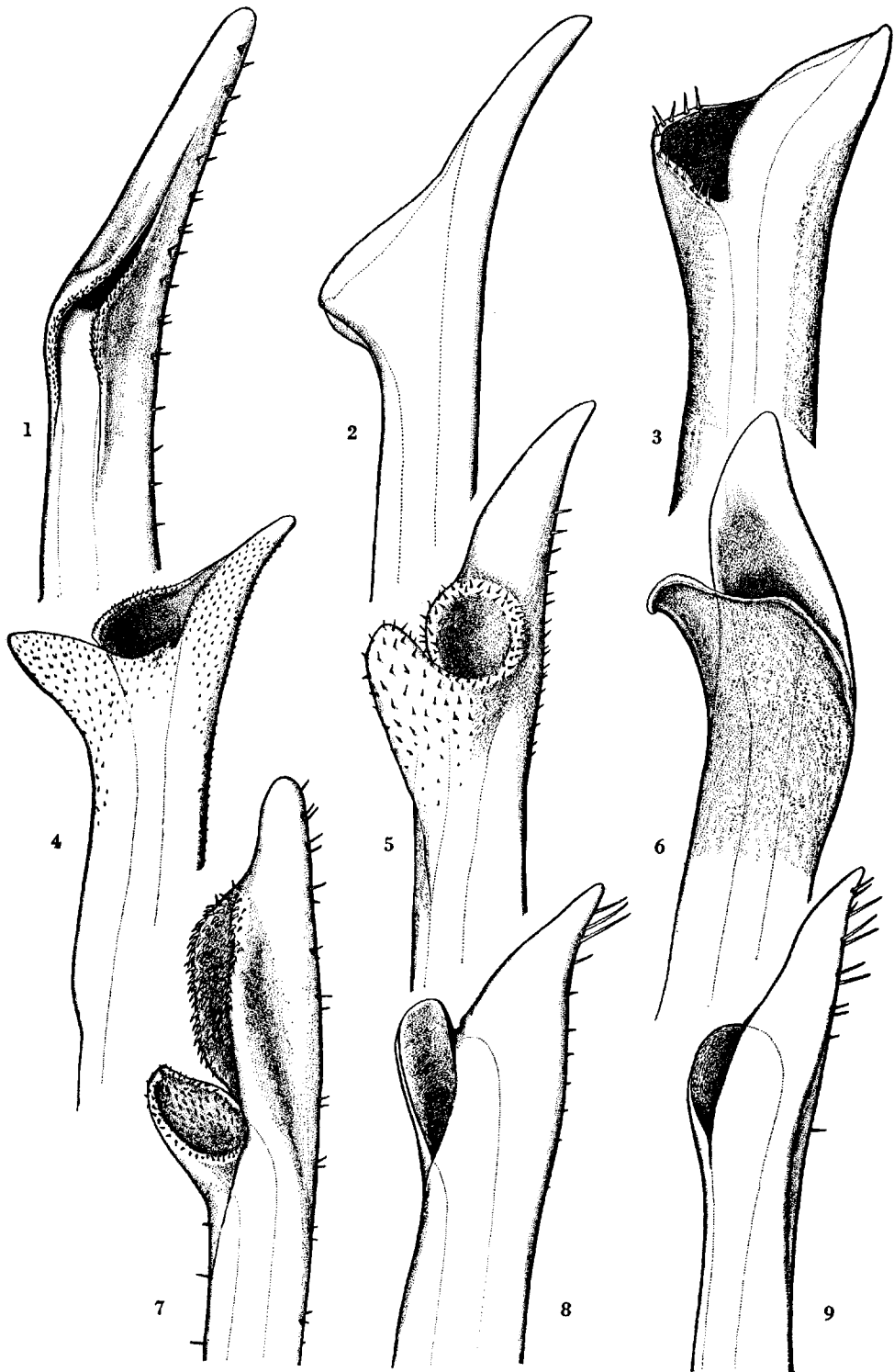


## PLATE B

## Inachinae

## Right first pleopods of

- Fig. 1. *Eurypodius latreillei* Guérin, 52.0 mm male, *Velero III* Sta. 829-38, x 81.4.
- Fig. 2. *Eurypodius longirostris* Miers, 19.0 mm male holotype, *Challenger* Sta. 308, x ? [Redrawn from a camera lucida sketch by Dr. Isabella Gordon of the British Museum (Natural History).]
- Fig. 3. *Anomalothir hoodensis* Garth, 9.6 mm male allotype, *Velero III* Sta. 817-38, x 159.3.
- Fig. 4. *Eucinetops lucasi* Stimpson, 14.7 mm male, *Velero III* Sta. 713-37, x 81.4.
- Fig. 5. *Eucinetops panamensis* Rathbun, 9.8 mm male, *Velero III* Sta. 400-35, x 136.6.
- Fig. 6. *Eucinetops rubellula* Rathbun, 5.0 mm male neotype, Mazatlan, Mexico, H. N. Lowe (U.S.N.M. No. 74440), x 218.
- Fig. 7. *Stenorynchus debilis* Smith, 28.0 mm male, *Velero III* Sta. 1045-40, x 81.4.
- Fig. 8. *Euprognatha bifida* Rathbun, 10.7 mm male, *Velero III* Sta. 699-37, x 81.4.
- Fig. 9. *Euprognatha granulata* Faxon, 9.8 mm male, *Velero III* Sta. 792-38, x 196.



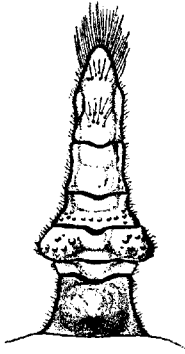
## PLATE C

## Inachinae

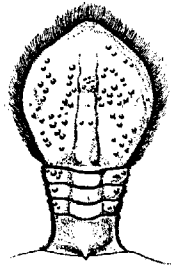
*Collodes gibbosus* (Bell)  
Male, *Valero III* Sta. 216-34

- Fig. 1. Dorsal view.
- Fig. 2. Right cheliped.
- Fig. 3. Dorsal view of orbit.
- Fig. 4. Ventral view of orbit.
- Fig. 5. Male abdomen.
- Fig. 6. Female abdomen.
- Fig. 7. Left outer maxilliped.

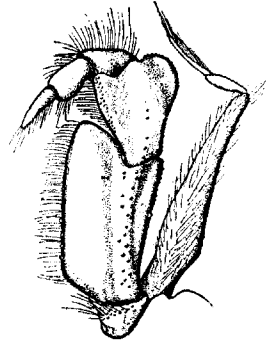




2 mm 5



2 mm 6



1 mm 7



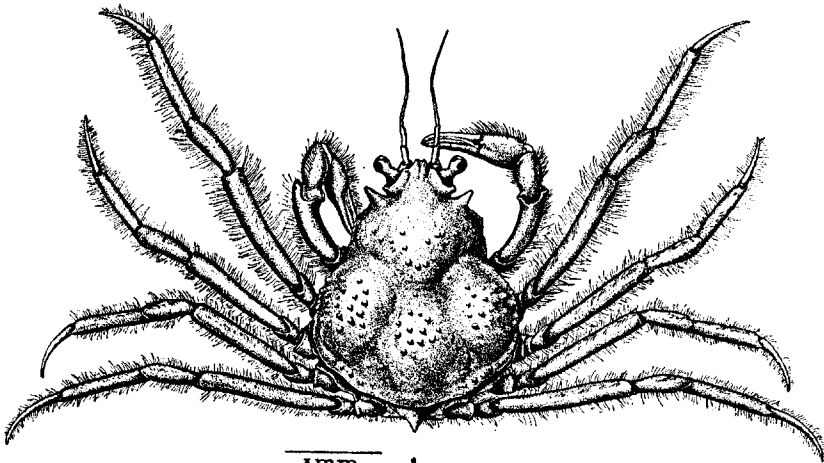
1 mm 3



1 mm 2



1 mm 4



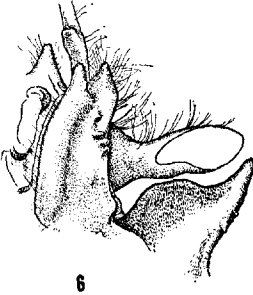
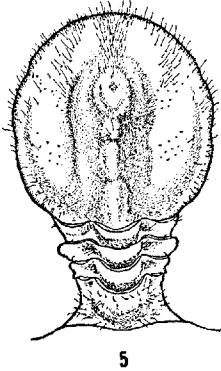
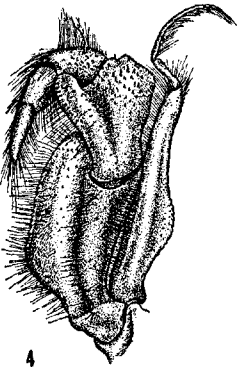
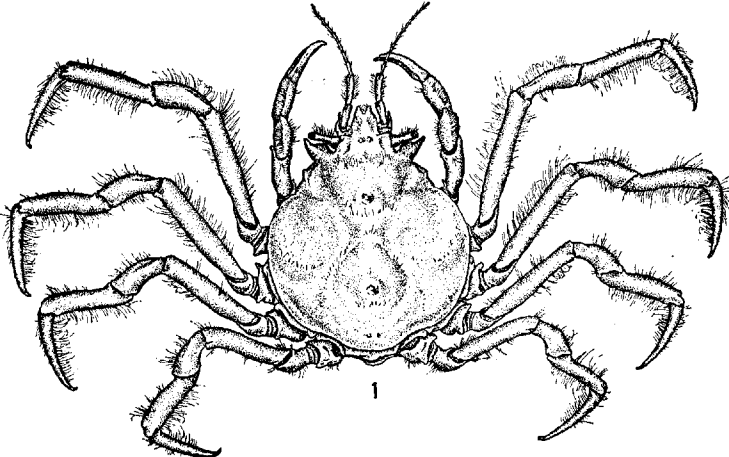
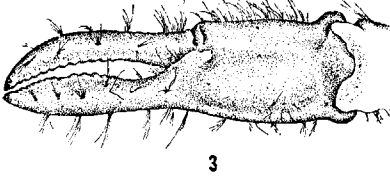
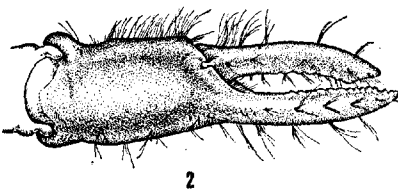
3 mm 1

## PLATE D

## Inachinae

*Collodes robsonae*, new species  
Female holotype (A.H.F. No. 397)

- Fig. 1. Dorsal view, x 1.05.
- Fig. 2. Right chela (tip of dactyl broken), x 4.2.
- Fig. 3. Left chela, x 4.2.
- Fig. 4. Left outer maxilliped, x 5.
- Fig. 5. Abdomen, x 2.1.
- Fig. 6. Ventral view of orbit, x 5.

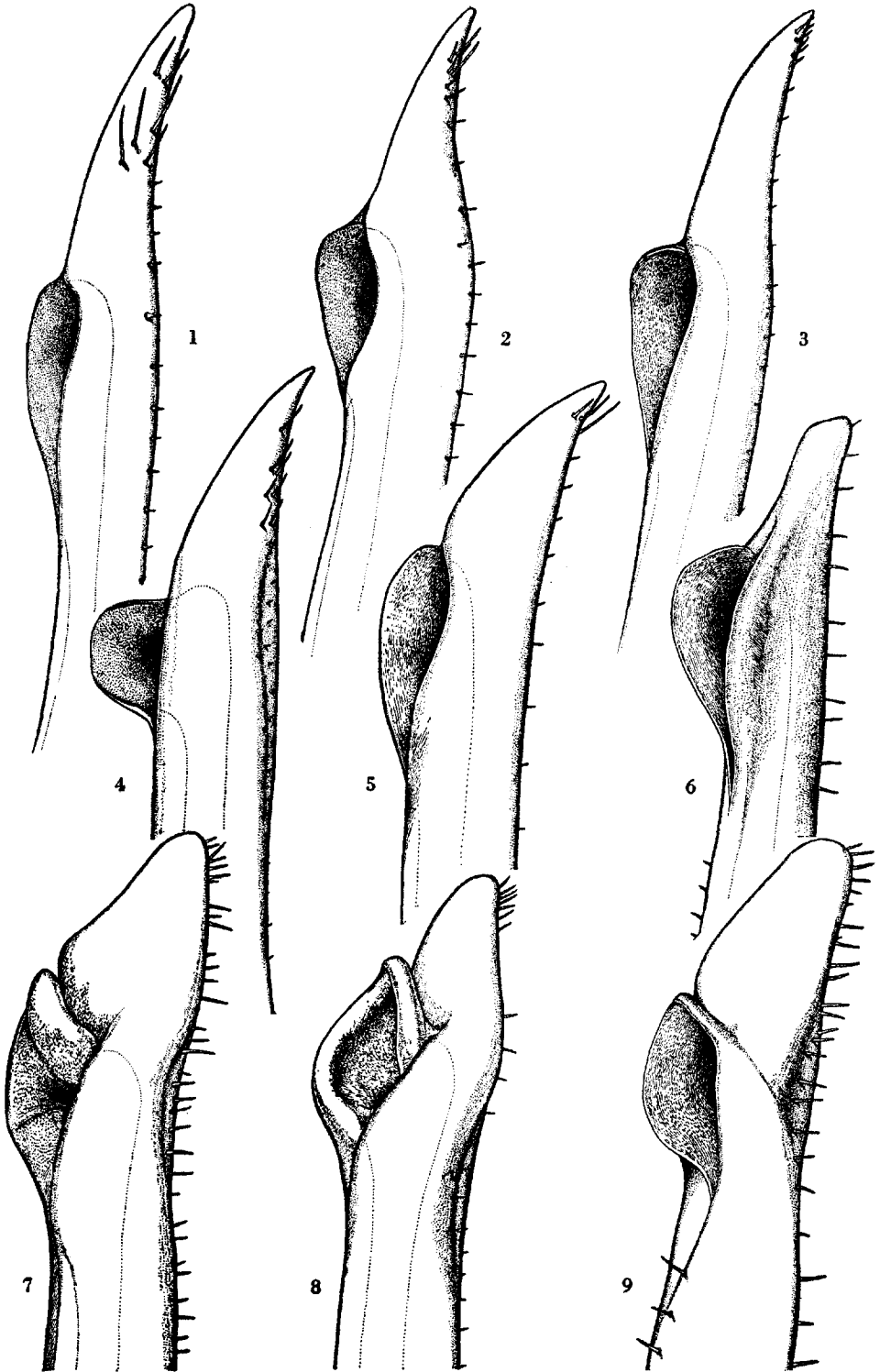


## PLATE E

## Inachinae

## Right first pleopods of

- Fig. 1. *Collodes gibbosus* (Bell), 13.2 mm male, *Velero III* Sta. 850-38, x 87.8.
- Fig. 2. *Collodes granosus* Stimpson, 7.3 mm male, *Velero III* Sta. 434-35, x 116.1.
- Fig. 3. *Collodes tenuirostris* Rathbun, 26.2 mm male, *Velero III* Sta. 1054-40, x 59.5.
- Fig. 4. *Collodes tumidus* Rathbun, 13.3 mm male, *Velero III* Sta. 562-36, x 116.1.
- Fig. 5. *Paradasyggius depressus* (Bell), 27.7 mm male, *Velero III* Sta. 941-39, x 87.8.
- Fig. 6. *Inachoides laevis* Stimpson, 8.8 mm male, *Velero III* Sta. 934-39, x 141.6.
- Fig. 7. *Pyromaia tuberculata* (Lockington), 15.7 mm male, *Velero III* Sta. 1233-41, x 116.1.
- Fig. 8. *Erileptus spinosus* (Rathbun), 11.0 mm male, *Velero III* Sta. 990-39, x 181.7.
- Fig. 9. *Inachoides microrhynchus* Milne Edwards and Lucas, 19.6 mm male, *Velero III* Sta. 845-38, x 116.1.



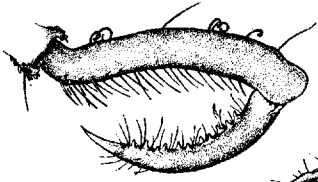
## PLATE F

## Inachinae

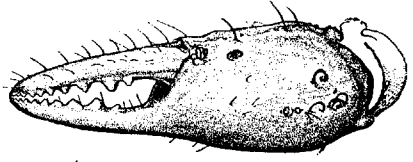
*Podochela angulata* Finnegan

## Male

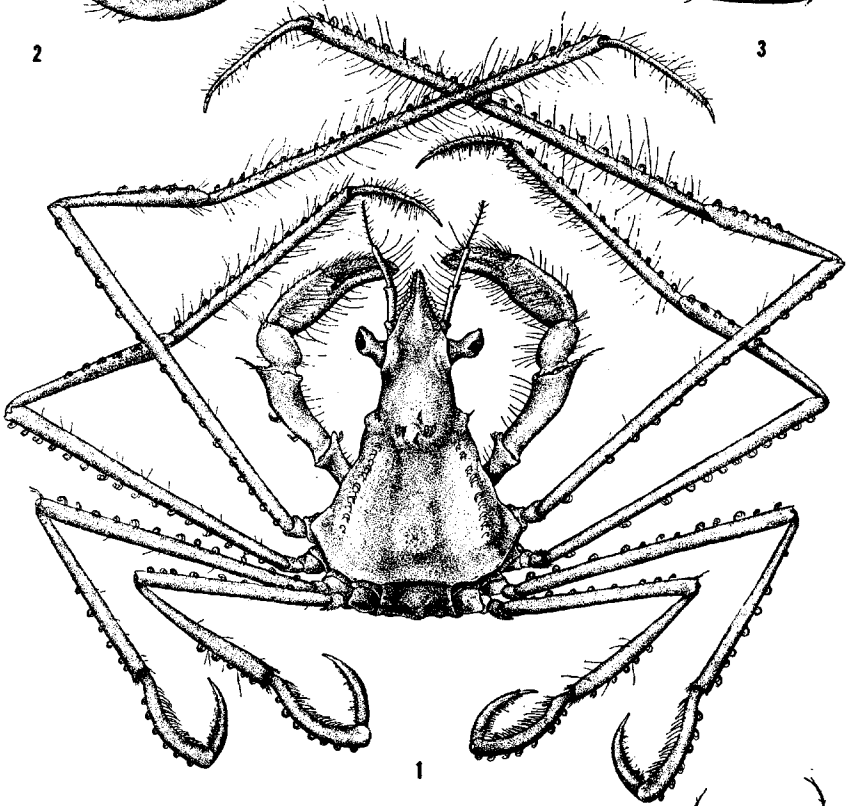
- Fig. 1. Dorsal view, x 6.9.
- Fig. 2. Right fourth dactyl, x 8.7.
- Fig. 3. Left chela, x 8.7.
- Fig. 4. Right outer maxilliped, x 8.7.
- Fig. 5. Male abdomen, x 6.9.
- Fig. 6. Ventral view of front, x 9.6.



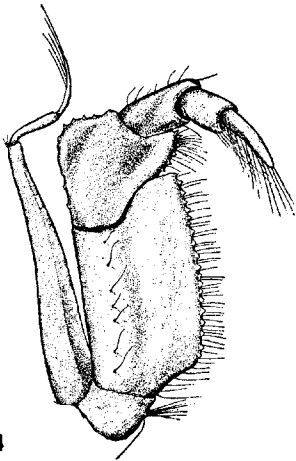
2



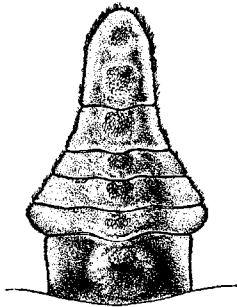
3



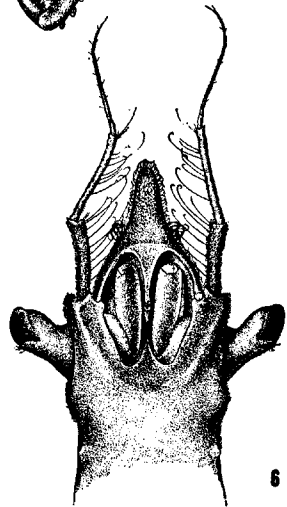
1



4



5



6

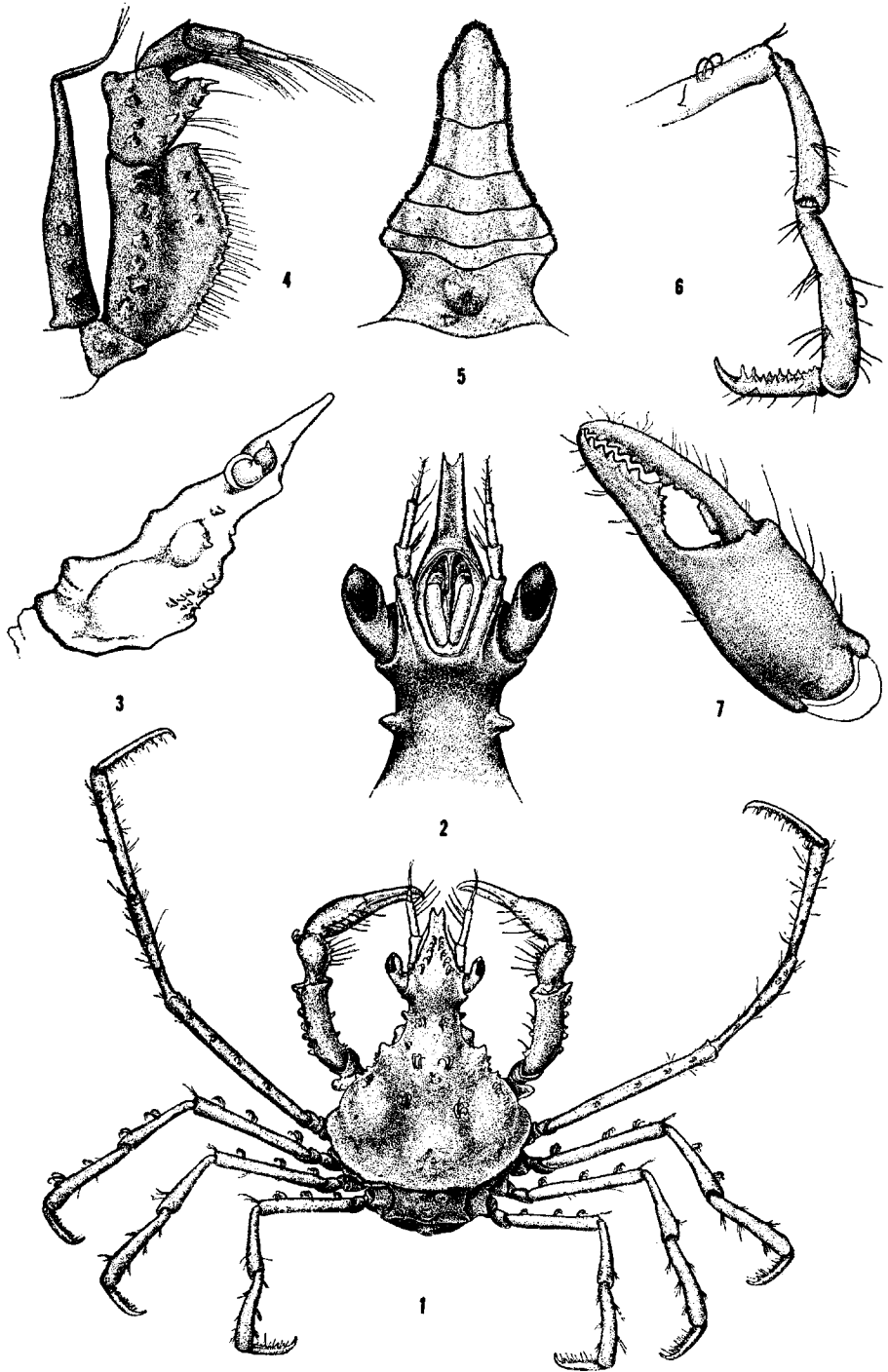
## PLATE G

## Inachinae

*Podochela veleronis*, new species  
Male holotype (A.H.F. No. 393)

- Fig. 1. Dorsal view, x 5.1.
- Fig. 2. Ventral view of front, x 11.1.
- Fig. 3. Lateral view of carapace, x 6.8.
- Fig. 4. Right outer maxilliped, x 25.5.
- Fig. 5. Male abdomen, x 11.1.
- Fig. 6. Right fourth walking leg, x 11.9.
- Fig. 7. Left chela, x 15.3.



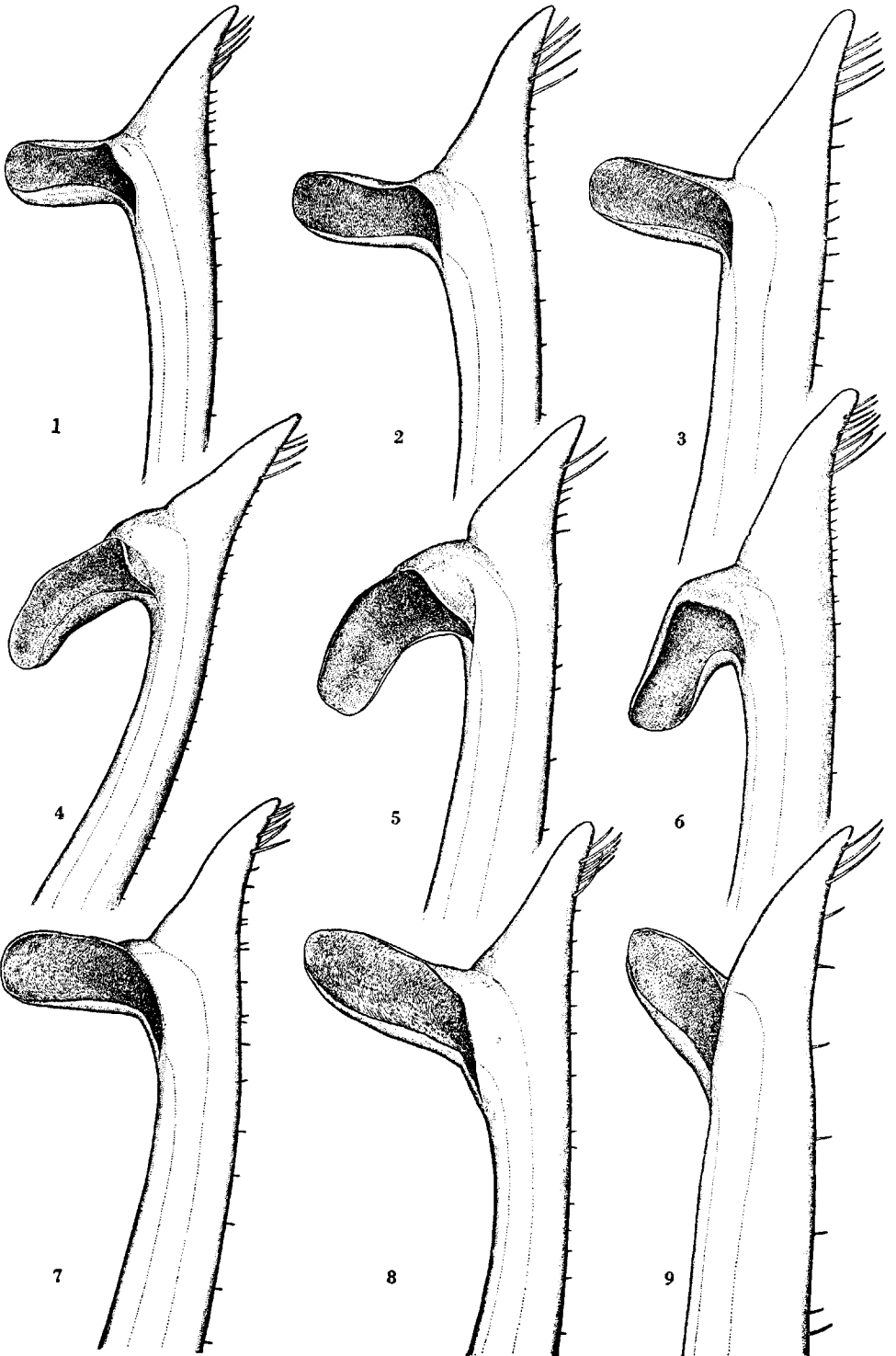


## PLATE H

## Inachinae

Right first pleopods of *Podochela* species

- Fig. 1. *P. lobifrons* Rathbun (= *P. barbarensis* Rathbun), 21.1 mm male, *Velero III* Sta. 1275-41, x 61.4.
- Fig. 2. *P. schmitti* Garth, 12.3 mm male paratype, *Velero III* Sta. 795-38, x 82.6.
- Fig. 3. *P. angulata* Finnegan, 12.6 mm male, *Velero III* Sta. 945-39, x 99.1.
- Fig. 4. *P. latimanus* Rathbun, 22.3 mm male, *Velero III* Sta. 585-36, x 61.4.
- Fig. 5. *P. veleronis* Garth, 6.5 mm male, *Velero III* Sta. 450-35, x 121.5.
- Fig. 6. *P. hemphilli* (Lockington), 33.6 mm male, *Velero III* Sta. 895-38, x 61.4.
- Fig. 7. *P. vestita* (Stimpson), 21.5 mm male, *Zaca* Sta. 136 (N.Y.Z.S.), x 61.4.
- Fig. 8. *P. margaritaria* Rathbun, 14.3 mm male, *Velero III* Sta. 307-35, x 61.4.
- Fig. 9. *P. ziesenhenei* Garth, 8.0 mm male, *Velero III* Sta. 239-34, x 121.5.

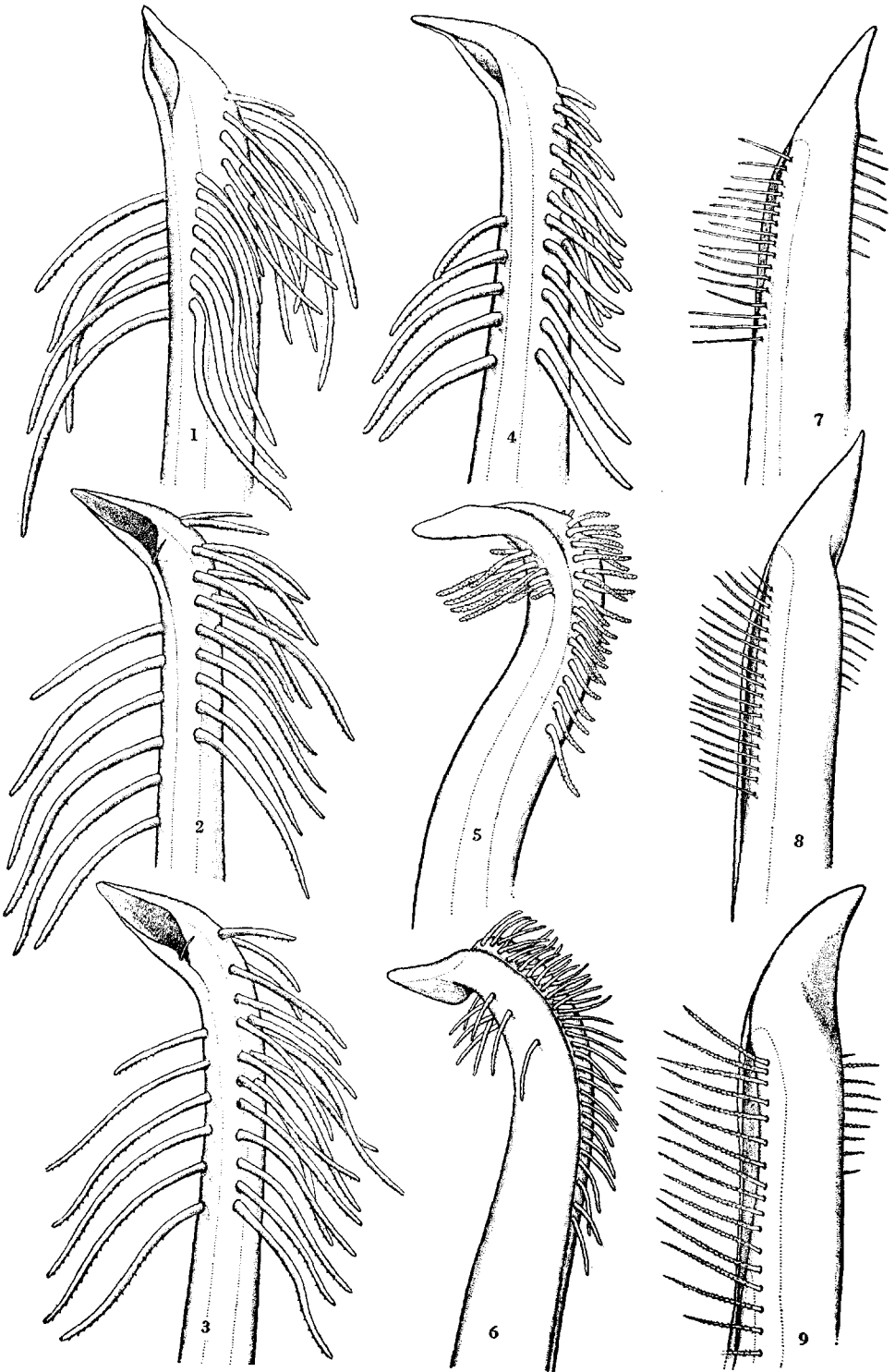


## PLATE I

## Oregoniinae

## Right first pleopods of

- Fig. 1. *Oregonia bifurca* Rathbun, 31.8 mm male, *Albatross* Sta. 4771 (U.S.N.M. No. 46488), x 54.6.
- Fig. 2. *Oregonia gracilis* Dana, 35.5 mm male, *N. B. Schofield* permanent Sta. 291 (C.A.S. locality 31156), x 54.6.
- Fig. 3. *Hyas lyratus* Dana, 48.8 mm male, *Albatross* Sta. 3233 (U.S.N.M. No. 15906), x 36.9.
- Fig. 4. *Hyas coarctatus alutaceus* Brandt, 46.8 mm male, *Albatross* Sta. 3251 (U.S.N.M. No. 15873), x 40.1.
- Fig. 5. *Chionoecetes opilio* (O. Fabricius), 69.3 mm male, *Albatross* Sta. 3440 (U.S.N.M. No. 17075), x 16.
- Fig. 6. *Chionoecetes bairdi* Rathbun, 82.3 mm male, Vancouver, B. C., *Investigator*, x 12.7.
- Fig. 7. *Chionoecetes angulatus* Rathbun, 24.6 mm male, *Albatross* Sta. 2860 (U.S.N.M. No. 15478), x 50.2.
- Fig. 8. *Chionoecetes tanneri* Rathbun, 31.0 mm male, *Albatross* Sta. 5698 (U.S.N.M. No. 47096), x 50.2.
- Fig. 9. *Chionoecetes bairdi* Rathbun, 25.2 mm male, Unalaska, W. H. Dall (U.S.N.M. No. 14675), x 48.1.

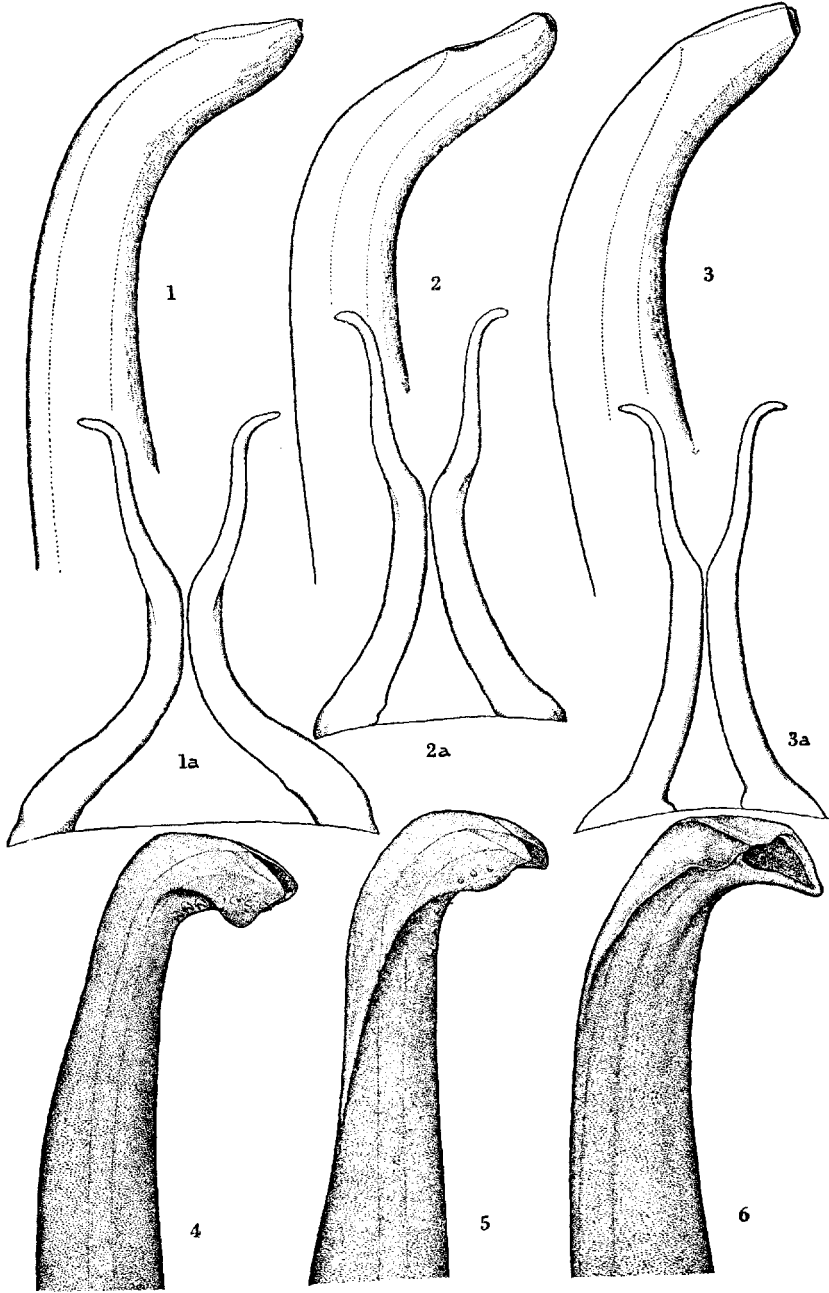


## PLATE J

## Ophthalmiinae

## Right first pleopods of

- Fig. 1. *Pitho picteti* (Saussure), 18.5 mm male, *Velero III* Sta. 1088-40, x 105.5.  
1a. Same specimen, pleopods *in situ*, x 10.5.
- Fig. 2. *Pitho quinquedentata* Bell, 10.4 mm male, *Velero III* Sta. 5-33, x 140.5.  
2a. Same specimen, pleopods *in situ*, x 21.
- Fig. 3. *Pitho sexdentata* Bell, 13.2 mm male, *Velero III* Sta. 400-35, x 140.5.  
3a. Same specimen, pleopods *in situ*, x 24.5.
- Fig. 4. *Tyche lamellifrons* Bell, 16.4 mm male, *Velero III* Sta. 662-37, x 80.8.
- Fig. 5. *Tyche clarionensis*, new species, 20.8 mm male holotype, *Velero III* Sta. 303-34 (A.H.F. No. 344), x 80.8.
- Fig. 6. *Tyche galapagensis*, new species, 24.0 mm male, *Velero III* Sta. 343-35, x 105.5.



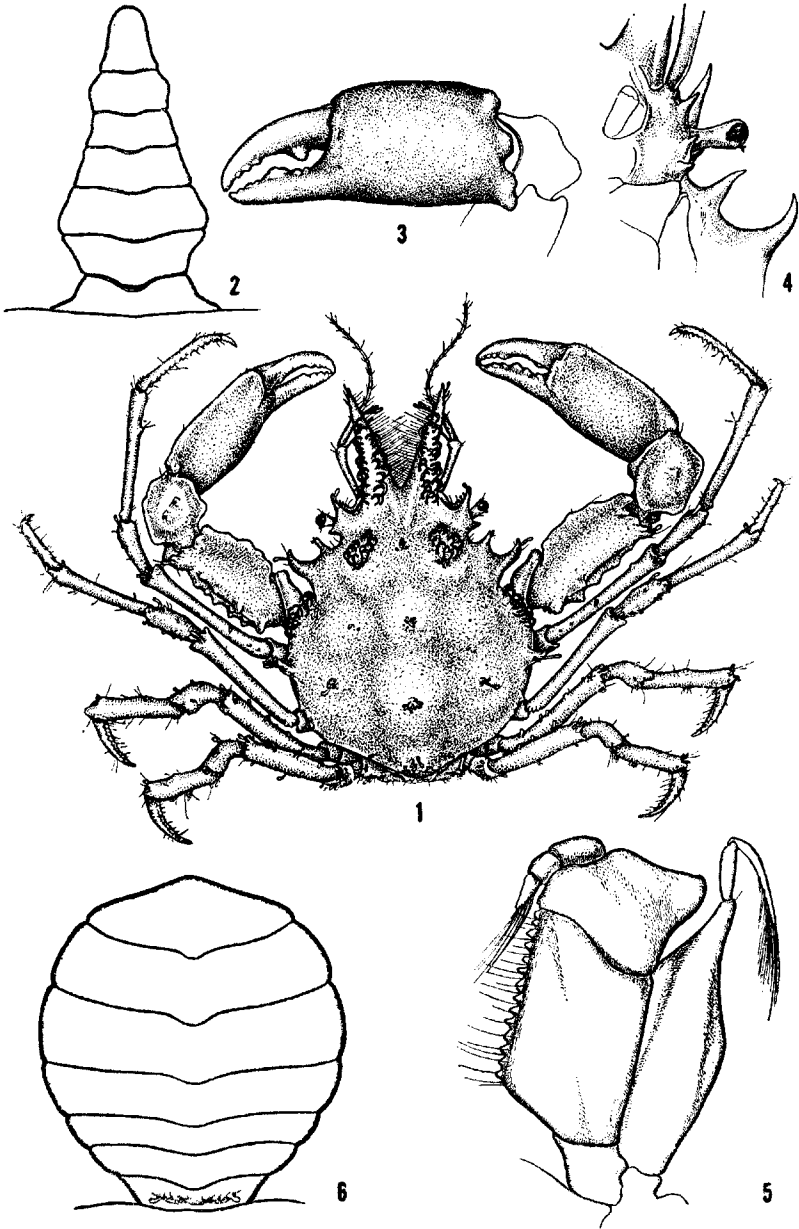
## PLATE K

## Acanthonychinae

*Pugettia hubbsi*, new species  
Male holotype (A.H.F. No. 496)

- Fig. 1. Dorsal view, x 4.5.
- Fig. 2. Male abdomen, x 9.
- Fig. 3. Left chela, x 6.
- Fig. 4. Ventral view of orbit, x 8.5.
- Fig. 5. Left outer maxilliped, x 6.
- Fig. 6. Female abdomen (not allotype), x 22.5.





## PLATE L

## Acanthonychinae

## Right first pleopods of

- Fig. 1. *Mimulus foliatus* Stimpson, 23.3 mm male, Hancock Sta. 1576-46, x 33.
- Fig. 2. *Pugettia producta* (Randall), 47.8 mm male, *Velero III* Sta. 1189-40, x 8.6.
- Fig. 3. *Pugettia richi* Dana, 40.3 mm male, Hancock Sta. 1490-42, x 28.6.
- Fig. 4. *Pugettia gracilis* Dana, 35.5 mm male, Hancock Sta. 1464-42, x 20.
- Fig. 5. *Pugettia venetiae* Rathbun, 16.2 mm male, *Velero III* Sta. 1123-40, x 41.3.
- Fig. 6. *Pugettia dalli* Rathbun, 18.0 mm male, *Velero III* Sta. 1224-41, x 61.4.
- Fig. 7. *Pugettia hubbsi*, new species, 10.5 mm male holotype, *Velero IV* Sta. 1922-49 (A.H.F. No. 496), x 59.
- Fig. 8. *Taliepus nuttalli* (Randall), 47.2 mm male, *Velero III* Sta. 1437-41, x 21.5.
- Fig. 9. *Taliepus dentatus* (Milne Edwards), 94.5 mm male, *Albatross*, Feb. 9-10, 1888 (U.S.N.M. No. 21903), x 29.
- Fig. 10. *Taliepus marginatus* (Bell), 87.0 mm male, L.U.C.E. Sta. M123, x 26.7.

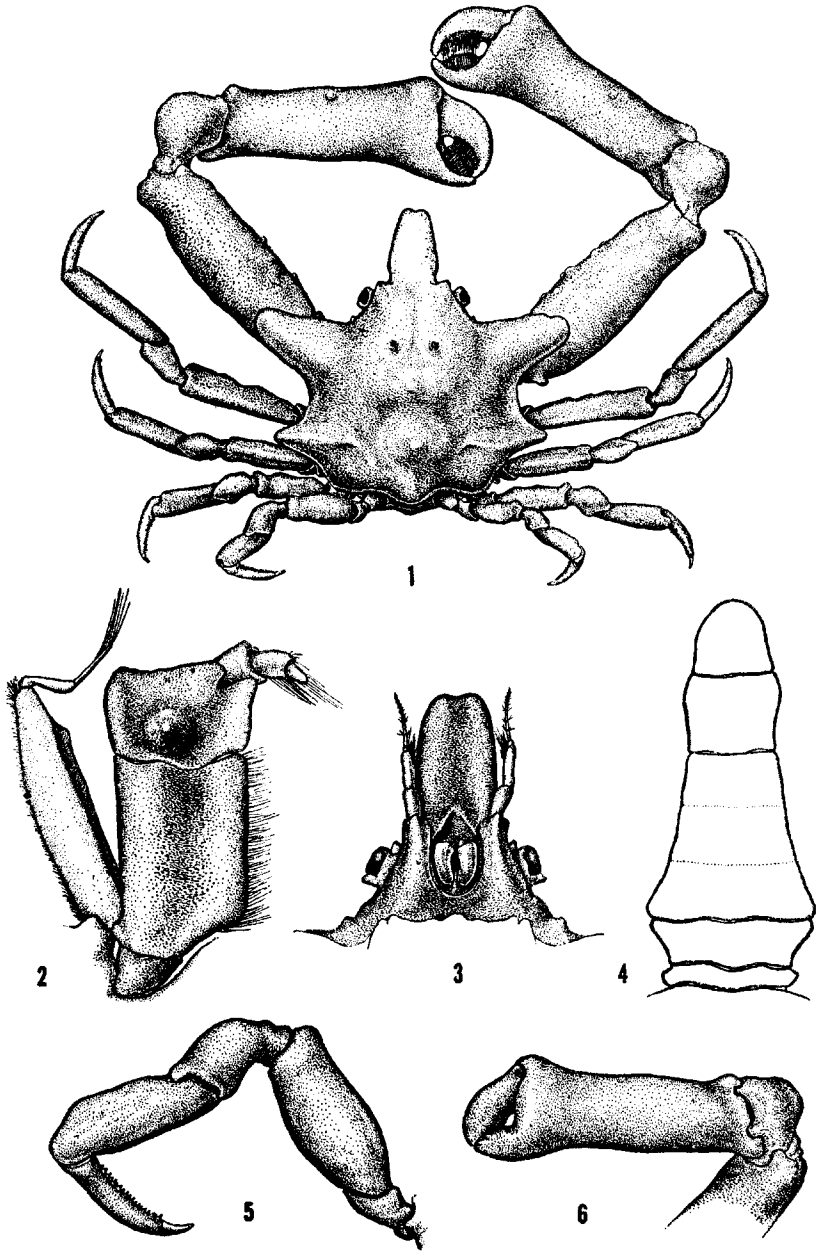


## PLATE M

## Acanthonychinae

*Epialtoides paradigmus*, new species  
Male holotype (A.H.F. No. 404)

- Fig. 1. Dorsal view, x 3.5.
- Fig. 2. Right outer maxilliped, x 17.
- Fig. 3. Ventral view of front, x 7.
- Fig. 4. Male abdomen, x 11.
- Fig. 5. Left fourth walking leg, x 10.
- Fig. 6. Left cheliped, outer view, x 3.5.

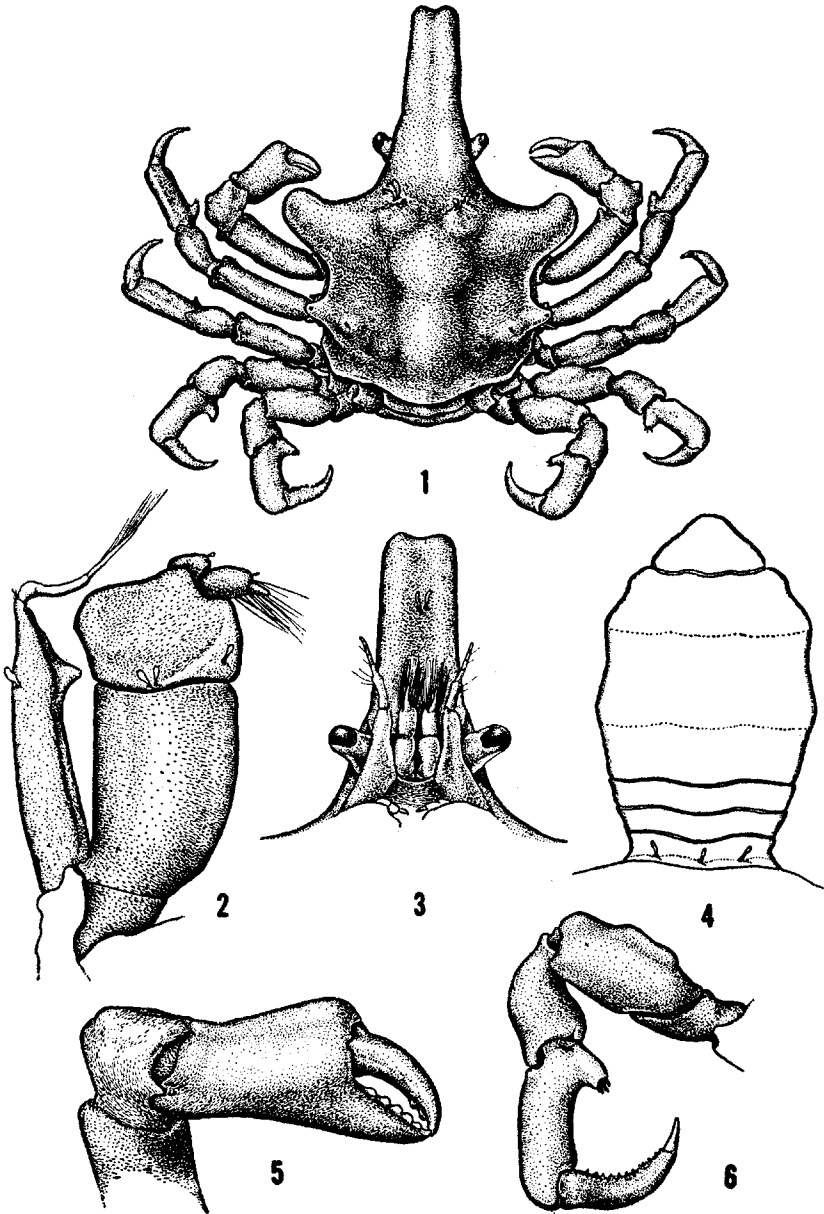


## PLATE N

## Acanthonychinae

*Eupleurodon trifurcatus* Stimpson  
Female, *Velero III* Sta. 403-35

- Fig. 1. Dorsal view, x 7.2.
- Fig. 2. Right outer maxilliped, x 22.
- Fig. 3. Ventral view of front, x 10.9.
- Fig. 4. Female abdomen, x 12.1.
- Fig. 5. Right cheliped, x 24.2.
- Fig. 6. Left fourth walking leg, x 15.8.



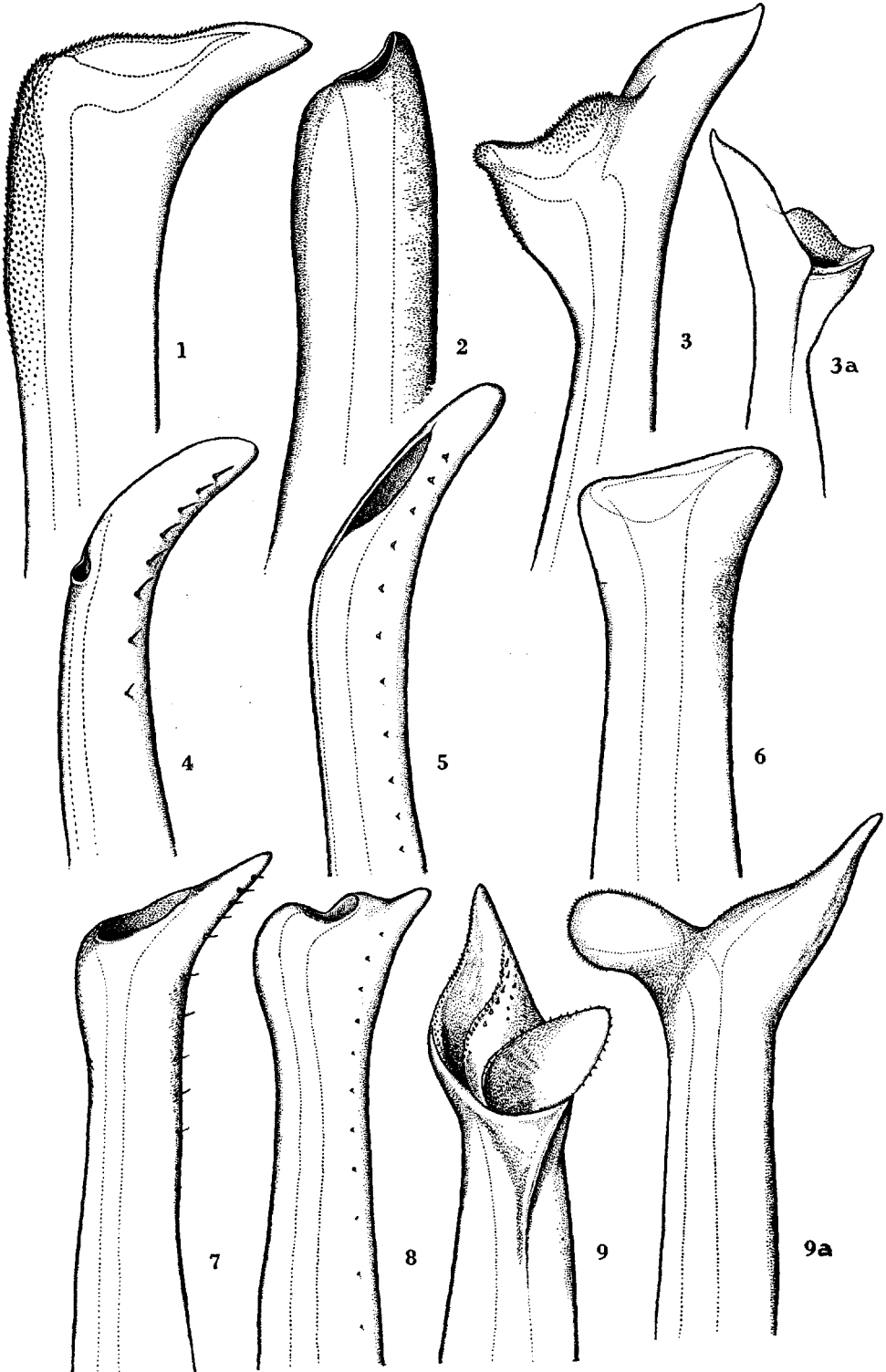
## PLATE O

## Acanthonychinae

## Right first pleopods of

- Fig. 1. *Sphenocarcinus agassizi* Rathbun, 30.0 mm male, *Velero III* Sta. 1037-40, x 94.3.
- Fig. 2. *Leucippa pentagona* Milne Edwards, 4.1 mm male, *Albatross* Sta. 2833 (U.S.N.M. No. 21902), x 345.
- Fig. 3. *Acanthonyx petiveri* Milne Edwards, 34.6 mm male, *Velero III* Sta. 374-35, x 47.2.  
3a. Same specimen, reverse view, x 28.1.
- Fig. 4. *Epialtus minimus* Lockington, 16.5 mm male, *Velero III* Sta. 1045-40, x 125.3.
- Fig. 5. *Epialtus minimus* Lockington, 8.7 mm male, Dawson Sta. 126, x 203.6.
- Fig. 6. *Epialtus sulcirostris* Stimpson, 11.0 mm male, San Marcos Island, Lower California, Johnson and Baker (C.A.S.), x 203.6.
- Fig. 7. *Epialtoides hiltoni* (Rathbun), 8.0 mm male, Menzies Sta. 139, x 94.3.
- Fig. 8. *Epialtoides paradigmus*, new species, 8.0 mm male, *Velero III* Sta. 970-39, x 128.3.
- Fig. 9. *Eupleurodon peruvianus* (Rathbun), 9.5 mm male, Punta Santa Elena, Ecuador, W. L. Schmitt (U.S.N.M. No. 70938), median view, x 94.3.  
9a. Same specimen, normal view, x 94.3.





## PLATE P

## Pisinae

## Right first pleopods of

- Fig. 1. *Scyra acutifrons* Dana, 46.5 mm male, Hancock Sta. 1488-42, x 59.
- Fig. 2. *Loxorhynchus grandis* Stimpson, 190.0 mm male, Santa Catalina Island, California, x 17.7.
- Fig. 3. *Loxorhynchus crispatus* Stimpson, 119.0 mm male, *Velero III* Sta. 1419-41, x 34.2.
- Fig. 4. *Chorilia longipes* Dana, 50.4 mm male, Anacortes, Washington, x 34.2.
- Fig. 5. *Chorilia longipes turgida* Rathbun, 70.8 mm male, *Velero III* Sta. 1156-40, x 29.5.
- Fig. 6. *Rochinia vesicularis* (Rathbun), 19.6 mm male, *Velero III* Sta. 1119-40, x 84.9.
- Fig. 7. *Libidoclaea granaria* Milne Edwards and Lucas, 35.9 mm male, *Albatross* Sta. 2767 (U.S.N.M. No. 21919), x 68.4.
- Fig. 8. *Libidoclaea granaria smithi* (Miers), 23.8 mm male, *Albatross* Sta. 2787 (U.S.N.M. No. 21923), x 68.4.

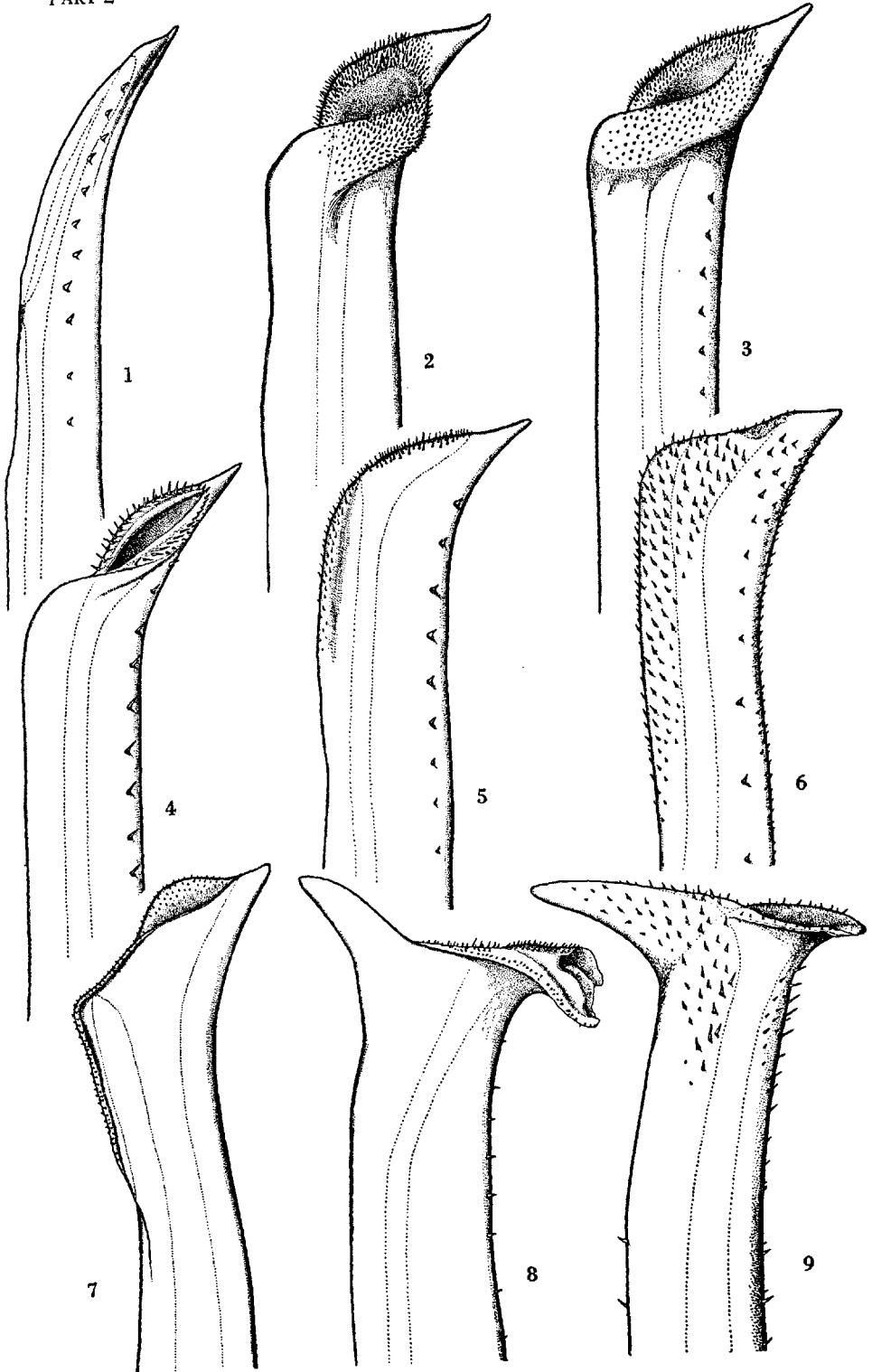


## PLATE Q

## Pisinae

## Right first pleopods of

- Fig. 1. *Pelia tumida* (Lockington), 21.2 mm male, *Velero III* Sta. 1230-41, x 141.6.
- Fig. 2. *Pelia pacifica* Milne Edwards, 6.8 mm male, *Velero III* Sta. 465-35 (Costa Rica), x 98.5.
- Fig. 3. *Pelia pacifica* Milne Edwards, 9.0 mm male, Changamé, Panama, Elinor D. Robson, x 141.6.
- Fig. 4. *Pelia pacifica* Milne Edwards, 7.9 mm male, *Velero III* Sta. 847-38 (Peru), x 141.6.
- Fig. 5. *Pisoides edwardsi* (Bell), 14.7 mm male, *Velero III* Sta. 820-38, x 89.1.
- Fig. 6. *Rochinia cornuta* (Rathbun), 17.5 mm male (mid-line measurement), *Albatross* Sta. 2818 (U.S.N.M. No. 21572), x 89.1.
- Fig. 7. *Rochinia occidentalis* (Faxon), male holotype, *Albatross* Sta. 3404 (M.C.Z. No. 4479), x 33.
- Fig. 8. *Notolopas lamellatus* Stimpson, 18.5 mm male, *Velero III* Sta. 474-35, x 68.4.
- Fig. 9. *Notolopas mexicanus* Garth, 7.5 mm male holotype, *Velero III* Sta. 264-34 (U.S.N.M. No. 91081), x 141.6.



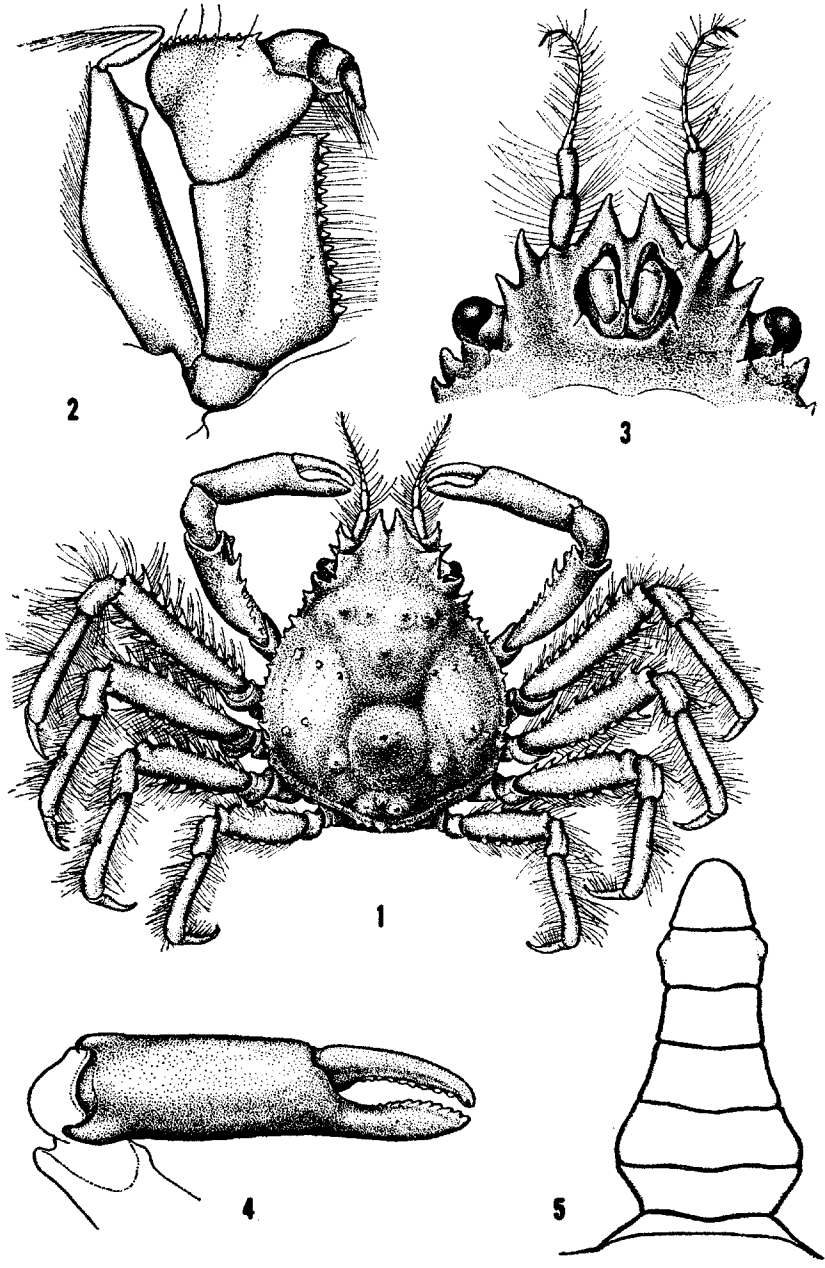
## PLATE R

## Pisinae

*Herbstia tumida* (Stimpson)

Young male, *Velero III* Sta. 773-38

- Fig. 1. Dorsal view, x 5.6.
- Fig. 2. Right outer maxilliped, x 27.2.
- Fig. 3. Ventral view of front, x 13.6.
- Fig. 4. Right chela, x 13.6.
- Fig. 5. Male abdomen, x 13.6.



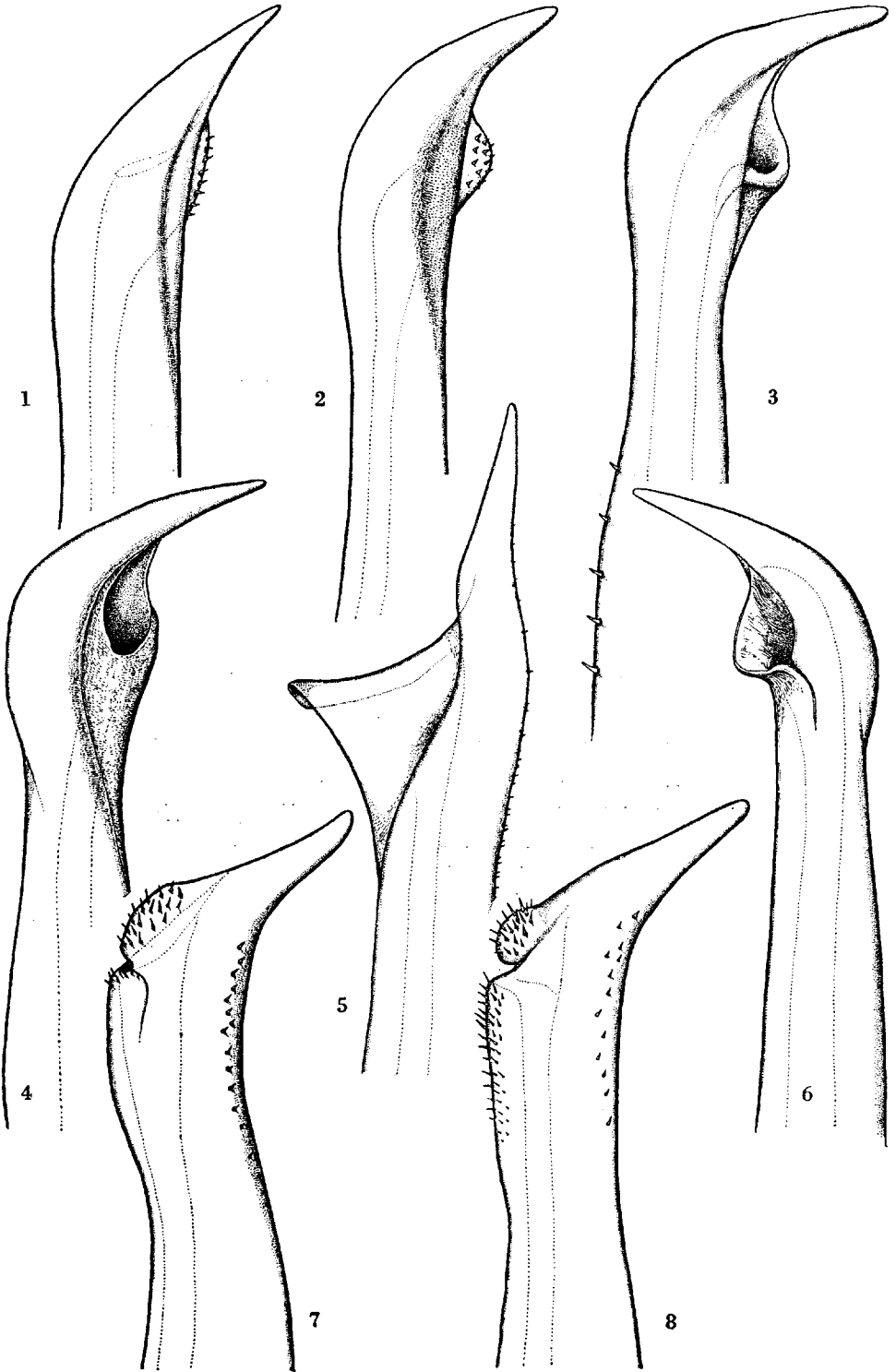
## PLATE 5

## Pisinae

Right first pleopods of *Herbstia* species

- Fig. 1. *H. camptacantha* (Stimpson), 13.5 mm male, *Velero III* Sta. 652-37, x 115.6.
- Fig. 2. *H. edwardsi* Bell, 13.1 mm male, *Velero III* Sta. 789-38, x 167.6.
- Fig. 3. *H. tumida* (Stimpson), 7.4 mm male, *Velero III* Sta. 773-38 (Cocos Island, C.R.), x 170 (inner view, aperture external).
- Fig. 4. *H. tumida* (Stimpson), 8.8 mm male, *Velero III* Sta. 252-34 (Secas Islands, Panama), x 141.6.
- Fig. 5. *H. parvifrons* (Randall), 32.5 mm male, *Velero III* Sta. 904-38, x 89.1.
- Fig. 6. *H. tumida* (Stimpson), 7.8 mm male, *Velero III* Sta. 247-34 (Bahía Honda, Panama), x 165.2 (external view).
- Fig. 7. *H. pubescens* Stimpson, 14.0 mm male, *Velero III* Sta. 464-35, x 80.2.
- Fig. 8. *H. pyriformis* (Bell), 21.3 mm male, *Velero III* Sta. 343-35, x 99.1.





## PLATE T

## Pisinae

## Right first pleopods of

- Fig. 1. *Neodoclea boneti* Buitendijk, 37.0 mm male lectotype (R.M.N.H. No. 7604), x 30.
- Fig. 2. *Libinia setosa* Lockington, 21.0 mm male, *Velero III* Sta. 1031-40, x 94.4.
- Fig. 3. *Libinia setosa* Lockington, 68.0 mm male neotype, Santa Maria Bay, Lower California, *Zaca* (C.A.S. Loc. 27594), x 41.3.
- Fig. 4. *Libinia mexicana* Rathbun, 24.7 mm male, *Velero III* Sta. 1072-40, x 68.4.
- Fig. 5. *Libinia mexicana* Rathbun, 65.6 mm male, San Felipe, Gulf of California, J. Rodriguez, x 59.
- Fig. 6. *Libinia rostrata* Bell, 64.5 mm male neotype, Paita, Peru, W. L. Schmitt (U.S.N.M. No. 100916), x 22.8.
- Fig. 7. *Lissa tuberosa* Rathbun, 11.0 mm male, *Velero III* Sta. 870-38, x 136.9.  
7a. Same specimen, apertural view, x 136.9.
- Fig. 8. *Lissa aurivilliusi* Rathbun, 13.7 mm male, *Velero III* Sta. 209-34, x 136.9.  
8a. Same specimen, apertural view, x 136.9.
- Fig. 9. *Leurocyclus gracilipes* (A. Milne Edwards and Bouvier), 8.6 mm male, *Albatross* Sta. 2764 (U.S.N.M. No. 21907), x 177. [Shown in lieu of the Pacific species, *L. tuberculosus* (Milne Edwards and Lucas).]

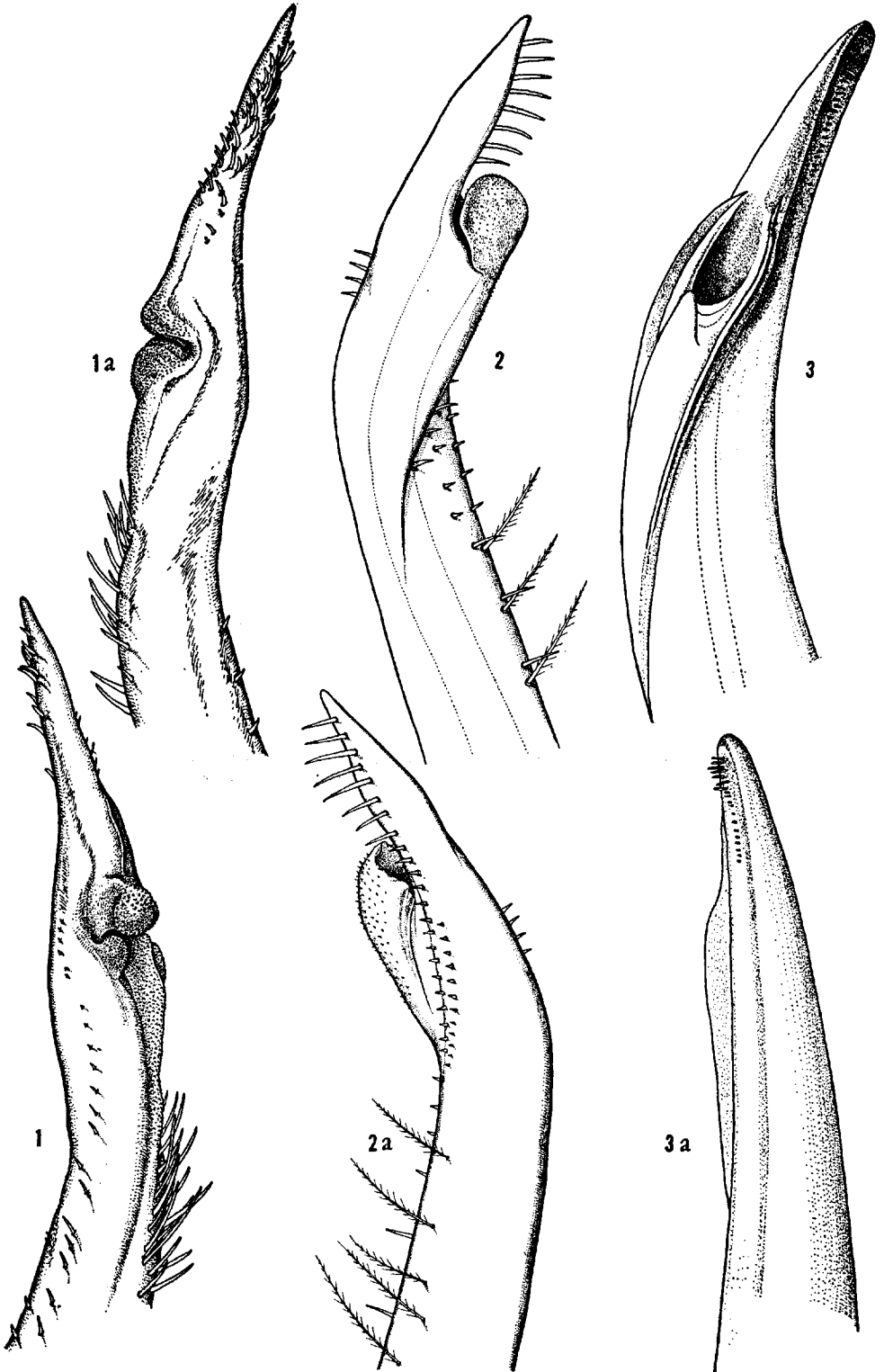


## PLATE U

## Majinae

## Right first pleopods of

- Fig. 1. *Paramithrax peroni* (Milne Edwards), 60.0 mm male, Wellington, N. Z., L. R. Richardson, x 25.  
1a. Same specimen, reverse view, x 25.
- Fig. 2. *Paramithrax baekstroemi* Balss, 16.1 mm male, Juan Fernandez Island, Chile, Hassler (M.C.Z. No. 2048), x 55.  
2a. Same specimen, reverse view, x 55.
- Fig. 3. *Maioopsis panamensis* Faxon, 147.0 mm male, Manta, Ecuador, R. Paessler (Z.M.H.), x 40.  
3a. Same specimen, reverse view, x 40.

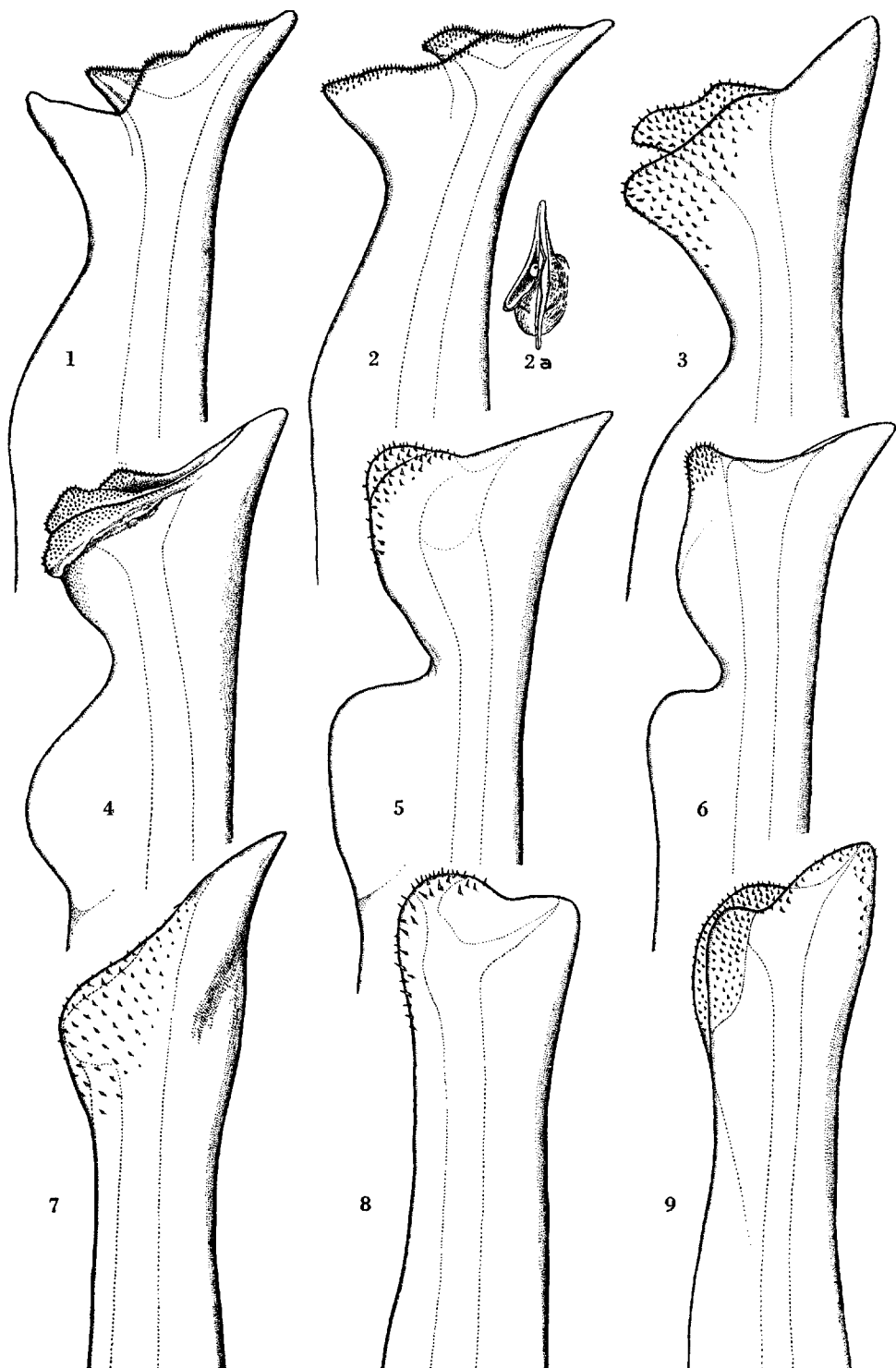


## PLATE V

## Mithracinae

## Right first pleopods of

- Fig. 1. *Ala cornuta* (Stimpson), 16.6 mm male, *Velero III* Sta. 447-35 (Panama), x 66.1.
- Fig. 2. *Ala cornuta* (Stimpson), 29.6 mm male, *Velero III* Sta. 1083-40 (Gulf of California), x 43.4.
- Fig. 3. *Mithrax (Mithrax) tuberculatus* Stimpson, 26.7 mm male, *Velero III* Sta. 444-35, x 47.2.
- Fig. 4. *Mithrax (Mithrax) armatus* Saussure [= *M. (Mithrax) orcutti* Rathbun], 53.7 mm male, *Velero III* Sta. 1-32, x 23.6.
- Fig. 5. *Mithrax (Mithrax) sinensis* Rathbun, 12.4 mm male, *Velero III* Sta. 856-38, x 59.
- Fig. 6. *Mithrax (Mithrax) sinensis clarionensis* Garth, 10.4 mm male, *Velero III* Sta. 917-39, x 66.1.
- Fig. 7. *Mithrax (Mithrax) pygmaeus* Bell, 10.3 mm male, *Velero III* Sta. 958-39, x 155.7.
- Fig. 8. *Mithrax (Mithrax) spinipes* Bell, 14.8 mm male, *Velero III* Sta. 1103-40, x 147.3.
- Fig. 9. *Mithrax (Mithraculus) denticulatus* (Bell), 14.3 mm male neotype, *Velero III* Sta. 400-35 (A.H.F. No. 353), x 68.9.



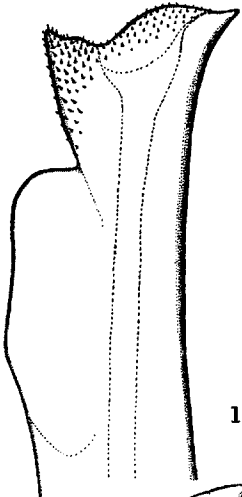
## PLATE W

## Mithracinae

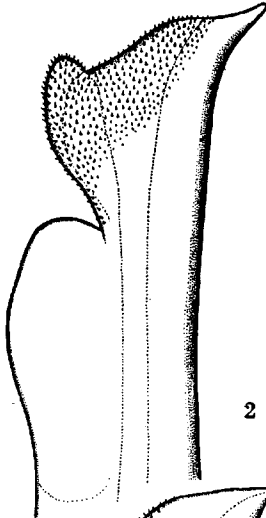
## Right first pleopods of

- Fig. 1. *Teleophrys cristulipes* Stimpson, 6.5 mm male, *Velero III* Sta. 638-37, x 88.5.
- Fig. 2. *Teleophrys tumidus* (Cano), 15.1 mm male, *Velero III* Sta. 844-38, x 57.3.
- Fig. 3. *Microphrys aweddelli* Milne Edwards, 33.9 mm male, Païta, Peru, W. L. Schmitt (U.S.N.M. No. 71229), x 66.9.
- Fig. 4. *Microphrys aculeatus* Bell, 12.0 mm male, *Velero III* Sta. 351-35 (Galapagos Islands), x 74.3.
- Fig. 5. *Microphrys platysoma* Stimpson, 18.2 mm male, *Velero III* Sta. 971-39, x 59.7.
- Fig. 6. *Microphrys triangulatus* (Lockington), 12.8 mm male, *Velero III* Sta. 745-37, x 59.2.
- Fig. 7. *Microphrys branchialis* Rathbun, 15.5 mm male, *Velero III* Sta. 209-34, x 74.3.
- Fig. 8. *Microphrys branchialis* Rathbun, 11.0 mm male, *Velero III* Sta. 1260-41, x 88.5.
- Fig. 9. *Microphrys triangulatus* (Lockington), 14.5 mm male, *Velero III* Sta. 177-34 (Galapagos Islands), x 59.7.

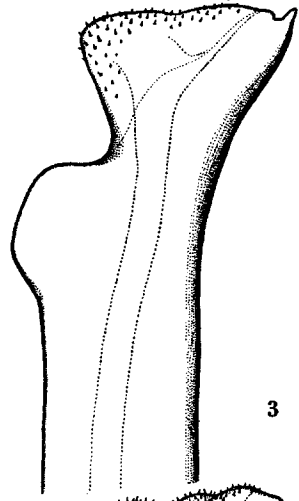




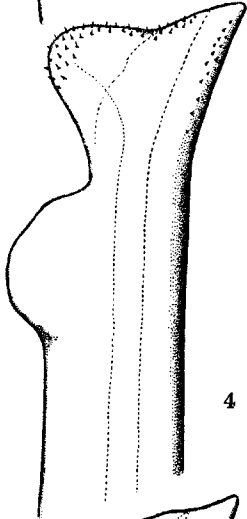
1



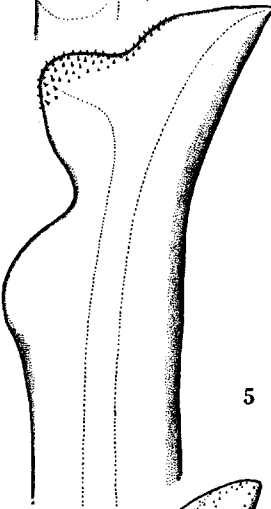
2



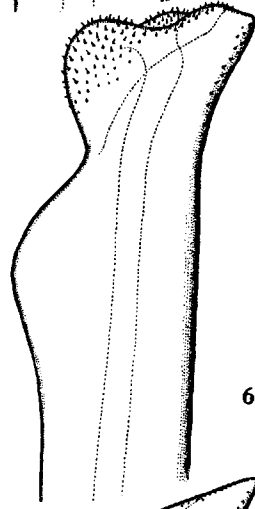
3



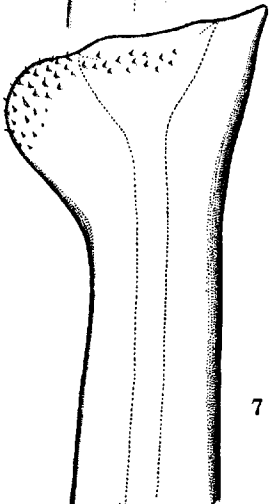
4



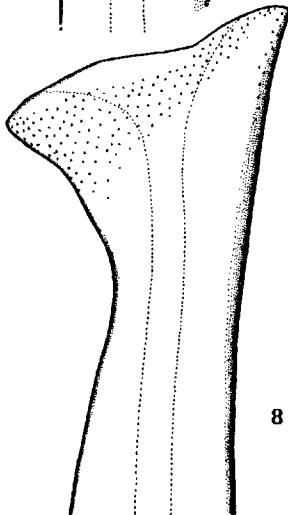
5



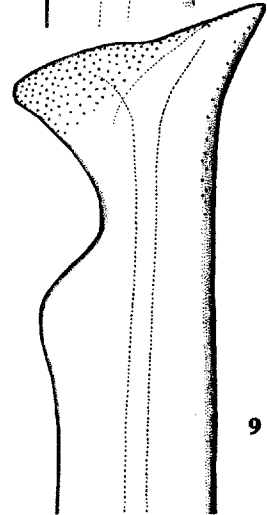
6



7



8



9

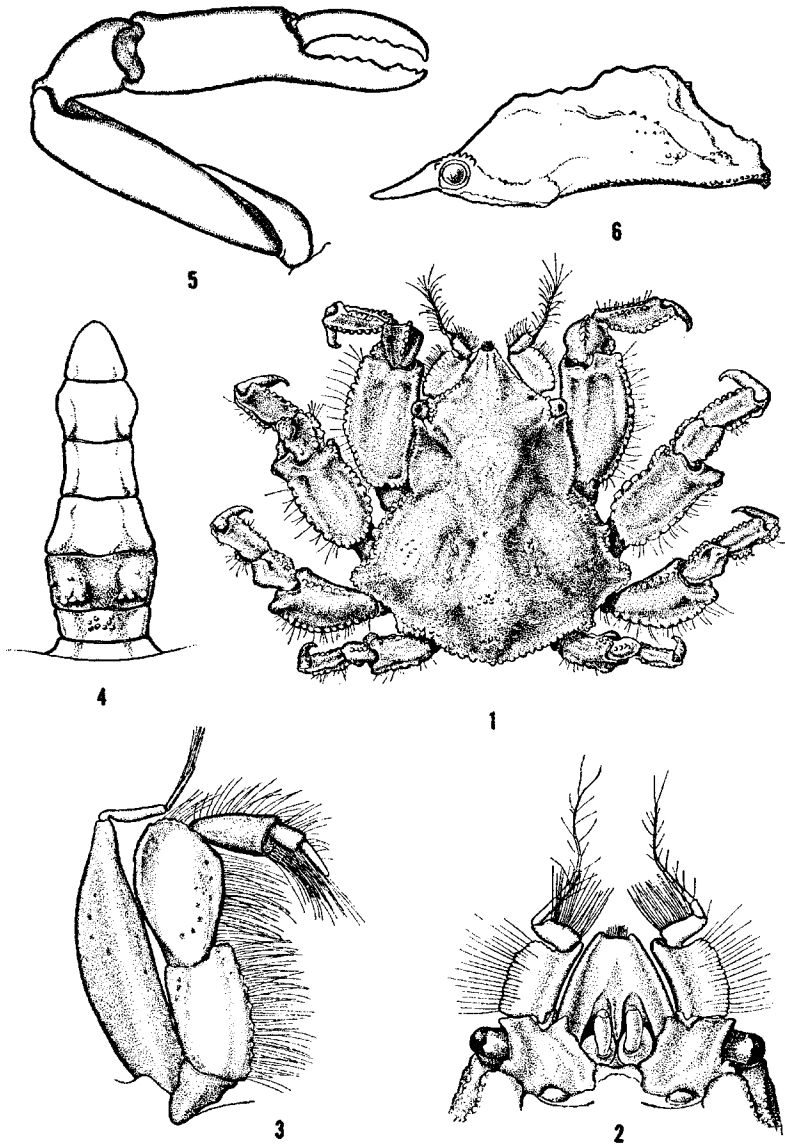
## PLATE X

## Mithracinae

*Hemus finneganae*, new species

Male holotype (U.S.N.M. No. 100918)

- Fig. 1. Dorsal view, x 6.1.  
Fig. 2. Ventral view of front, x 11.2.  
Fig. 3. Right outer maxilliped, x 31.  
Fig. 4. Male abdomen, x 13.1.  
Fig. 5. Right chela, x 22.5.  
Fig. 6. Lateral view of carapace, x 7.5.

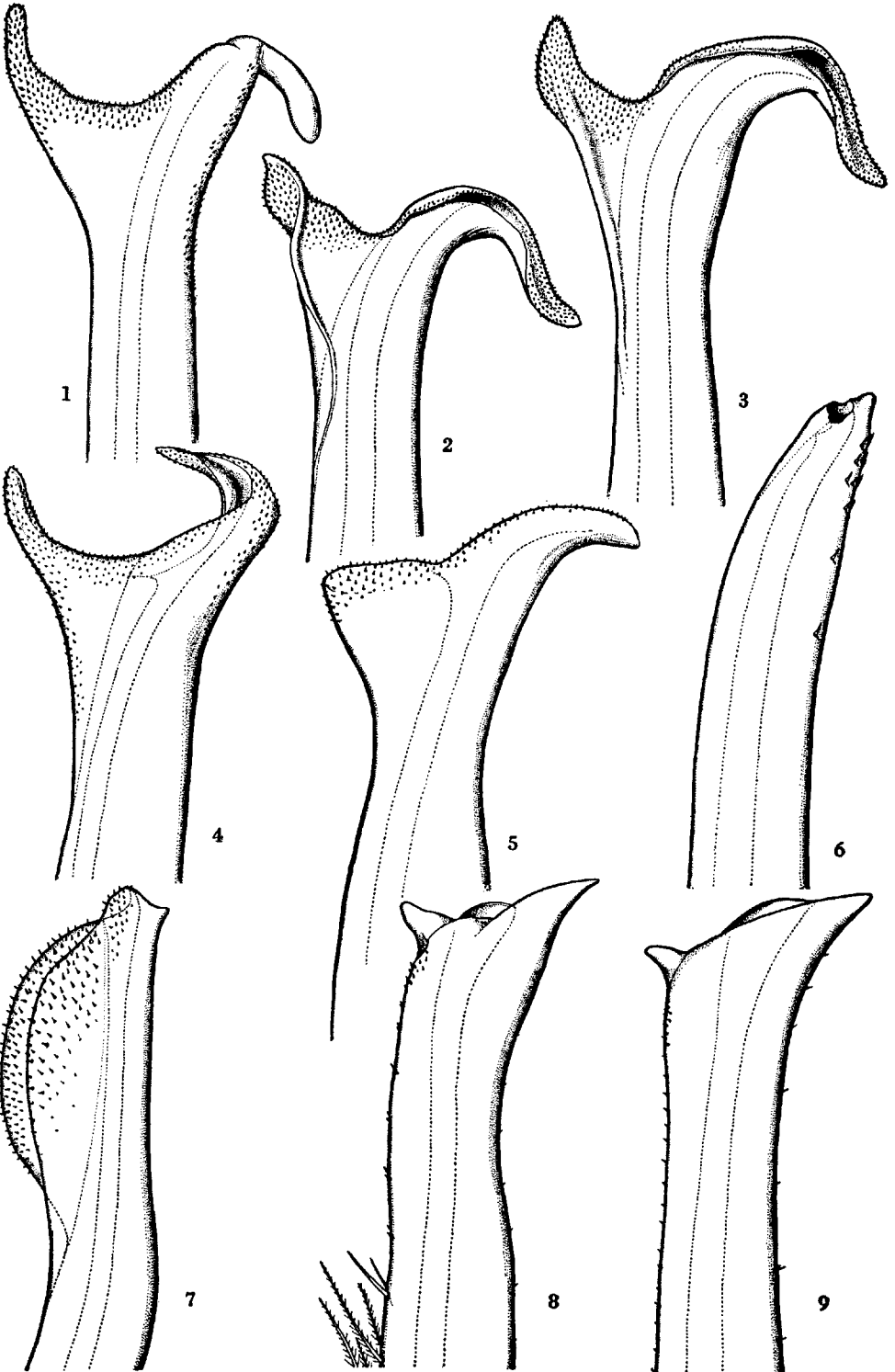


## PLATE Y

## Mithracinae

## Right first pleopods of

- Fig. 1. *Stenocionops angusta* (Lockington) [= *S. contigua* (Rathbun)], 63.5 mm male, *Velero III* Sta. 1072-40, x 33.7.
- Fig. 2. *Stenocionops ovata* (Bell) (= *S. triangulata* Rathbun), 39.8 mm male, *Velero III* Sta. 143-34 (Galapagos Islands), x 45.5.
- Fig. 3. *Stenocionops beebei* Glassell, 30.1 mm male, *Velero III* Sta. 702-37, x 56.9.
- Fig. 4. *Macrocoeloma maccullochae* Garth, 31.3 mm male holotype, *Velero III* Sta. 747-37 (A.H.F. No. 372), x 56.9.
- Fig. 5. *Macrocoeloma villosum* Bell, 37.2 mm male, *Velero III* Sta. 403-35, x 56.9.
- Fig. 6. *Hemus analogus* Rathbun, 5.6 mm male, *Velero III* Sta. 506-36, x 199.
- Fig. 7. *Hemus finneganae*, new species, 6.0 mm male paratype, *Velero III* Sta. 457-35, x 68.3.
- Fig. 8. *Thoe sulcata* Stimpson, 15.7 mm male, *Velero III* Sta. 646-37, x 85.7.
- Fig. 9. *Thoe sulcata panamensis* Nobili, 10.1 mm male, *Velero III* Sta. 239-34, x 136.9.



## PLATE Z

## Parthenopidae

*Parthenope (Pseudolambrus) stimpsoni*, new species  
Male, *Valero III* Sta. 257-34\*

- Fig. 1. Dorsal view, x 3.1.
- Fig. 2. Right chela, x 3.1.
- Fig. 3. Ventral view of front, x 6.6.
- Fig. 4. Female abdomen, x 5.4.
- Fig. 5. Right outer maxilliped, x 9.
- Fig. 6. Male abdomen, x 7.2.

\*With the exceptions of Fig. 4, allotype, and Fig. 6, holotype.

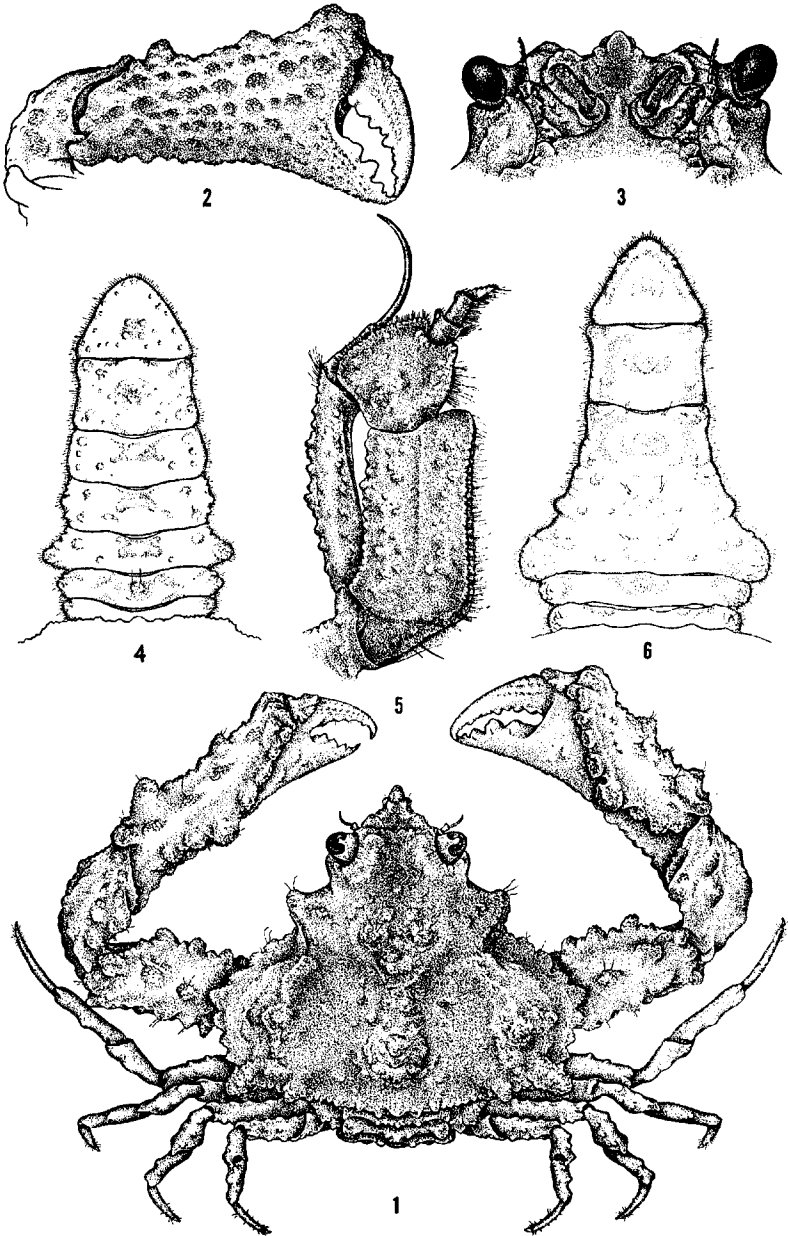
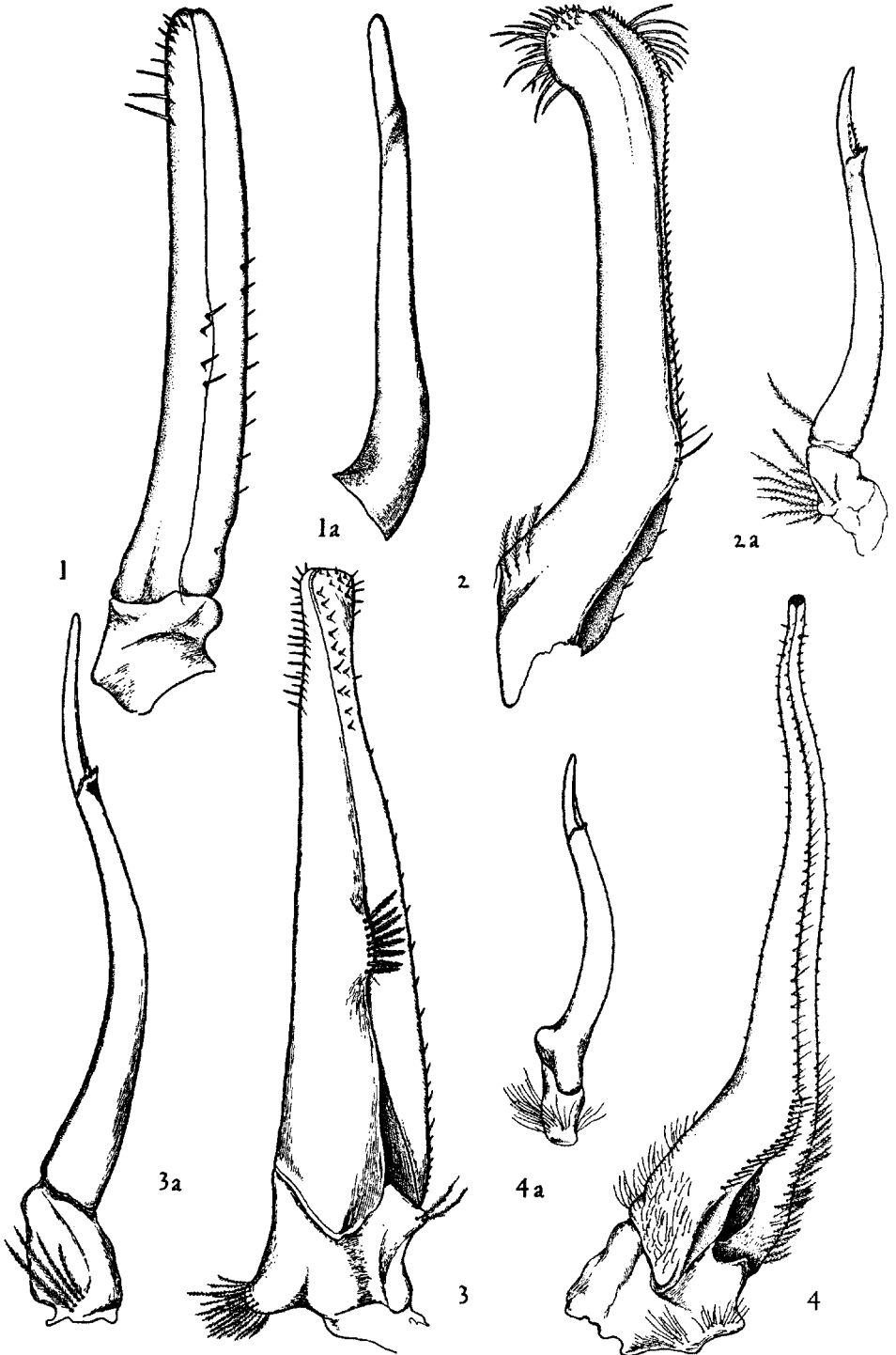


PLATE Z<sub>1</sub>

## Parthenopidae

- Fig. 1. *Parthenope (Parthenope) hyponca* (Stimpson), male, *Velero III* Sta. 438-35. First pleopod, x 63.  
1a. Same specimen, second pleopod, x 63.
- Fig. 2. *Parthenope (Pseudolambrus) triangula* (Stimpson), male, *Velero III* Sta. 639-37. First pleopod, x 27.  
2a. Same specimen, second pleopod, x 27.
- Fig. 3. *Parthenope (Platylambrus) exilipes* (Rathbun), male, *Velero III* Sta. 843-38. First pleopod, x 27.  
3a. Same specimen, second pleopod, x 27.
- Fig. 4. *Parthenope (Platylambrus) depressiuscula* (Stimpson), male, *Velero III* Sta. 959-39. First pleopod, x 17.4.  
4a. Same specimen, second pleopod, x 17.4.





## PLATE Z.

## Parthenopidae

- Fig. 5. *Parthenope (Pseudolambrus) excavata* (Stimpson), male, *Velero III* Sta. 960-39. First pleopod, x 24.8.  
5a. Same specimen, second pleopod, x 24.8.
- Fig. 6. *Parthenope (Pseudolambrus) simpsoni*, new species, male, *Velero III* Sta. 257-34. First pleopod, x 24.8.  
6a. Same specimen, second pleopod, x 24.8.
- Fig. 7. *Daldorfia garthi* Glassell, male, *Velero III* Sta. 465-35. First pleopod, x 11.6.  
7a. Same specimen, second pleopod, x 11.6.
- Fig. 8. *Thyrolambrus glasselli*, new name ( $\equiv T. erosus$  Rathbun), male, *Velero III* Sta. 517-36. First pleopod, x 24.8.  
8a. Same specimen, second pleopod, x 24.8.

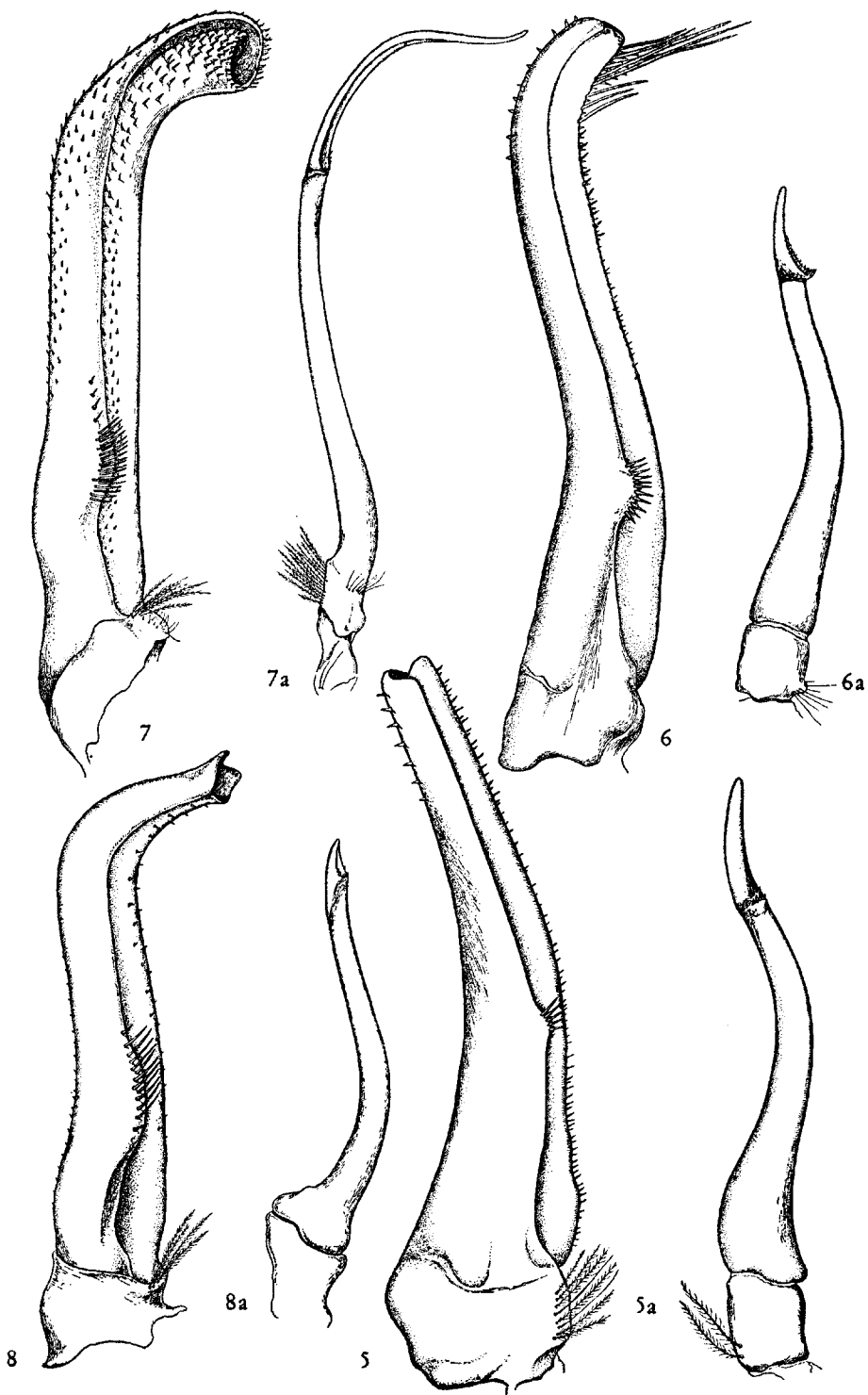
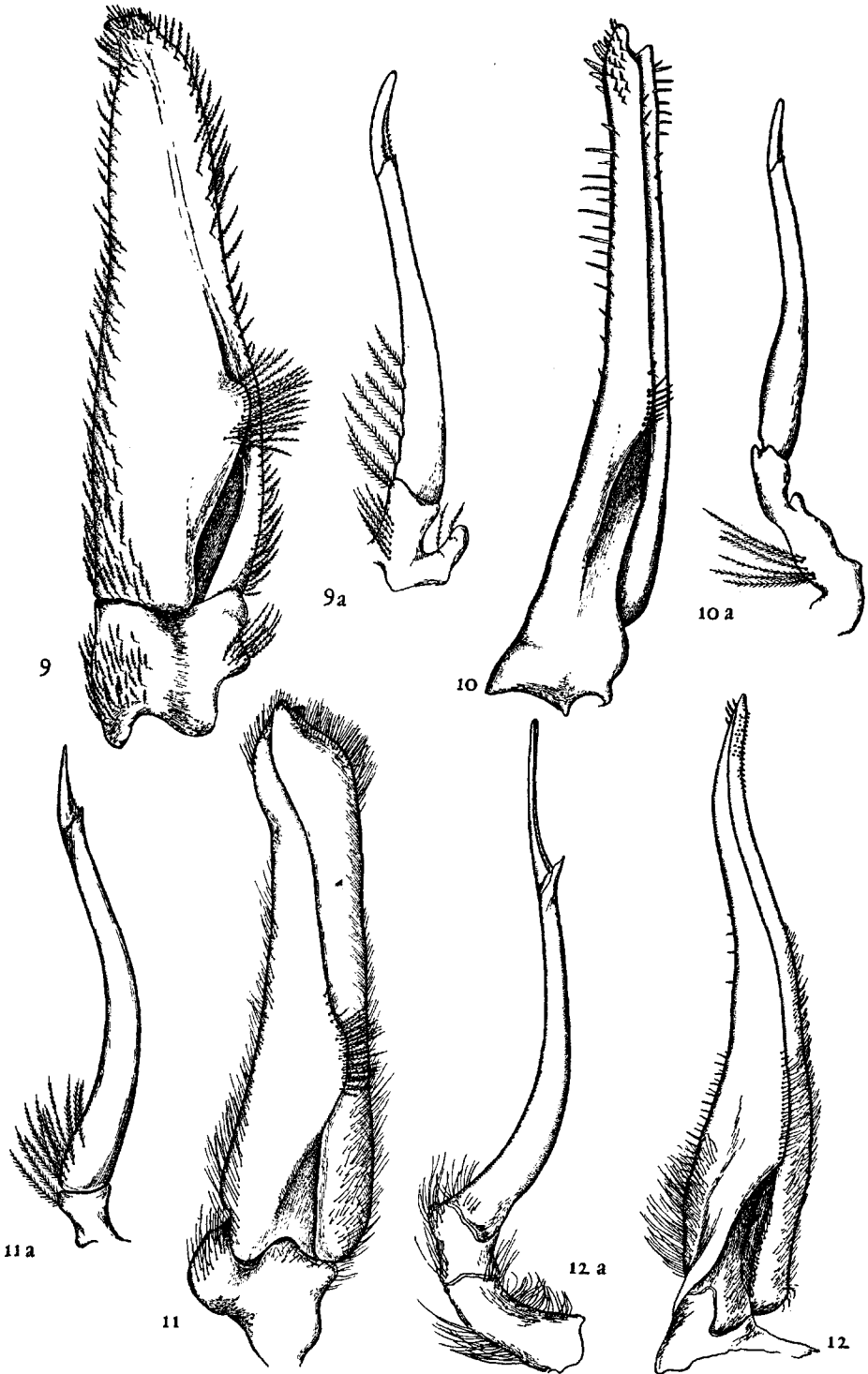


PLATE Z<sub>3</sub>

## Parthenopidae

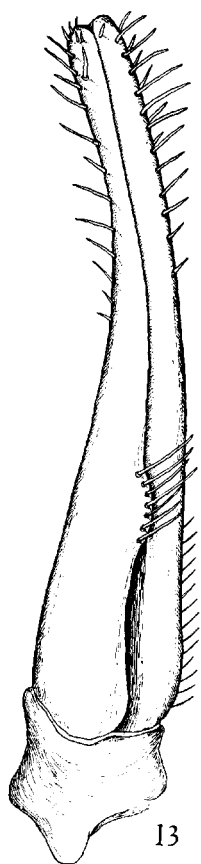
- Fig. 9. *Solenolambrus arcuatus* Stimpson, male, *Velero III* Sta. 259-34. First pleopod, x 31.7.  
9a. Same specimen, second pleopod, x 31.7.
- Fig. 10. *Leiolambrus punctatissimus* (Owen), male, *Askoy* Sta. 101 (Solano Bay, Colombia). First pleopod, x 25.9.  
10a. Same specimen, second pleopod, x 25.9.
- Fig. 11. *Mesorhoea belli* (A. Milne Edwards), male, *Velero III* Sta. 722-37. First pleopod, x 25.9.  
11a. Same specimen, second pleopod, x 25.9.
- Fig. 12. *Aethra scruposa scutata* Smith, male, *Velero III* Sta. 28-33. First pleopod, x 5.  
12a. Same specimen, second pleopod, x 5.



## PLATE Z.

## Parthenopidae

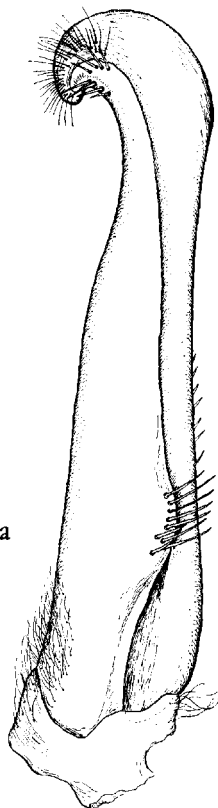
- Fig. 13. *Heterocrypta colombiana* Garth, male, *Velero III* Sta. 478-35. First pleopod, x 92.8.  
13a. Same specimen, second pleopod, x 92.8.
- Fig. 14. *Heterocrypta occidentalis* (Dana), male, Santa Cruz Island, California, Sept. 16, 1933. First pleopod, x 15.2.  
14a. Same specimen, second pleopod, x 15.2.
- Fig. 15. *Cryptopodia hassleri* Rathbun, male, *Velero III* Sta. 472-35. First pleopod, x 95.2.  
15a. Same specimen, second pleopod, x 95.2.
- Fig. 16. *Heterocrypta macrobrachia* Stimpson, male, *Velero III* Sta. 960-39. First pleopod, x 47.6.  
16a. Same specimen, second pleopod, x 47.6.



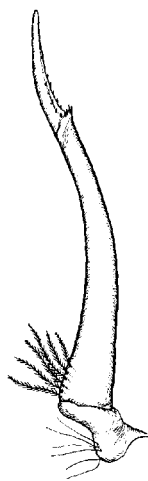
13



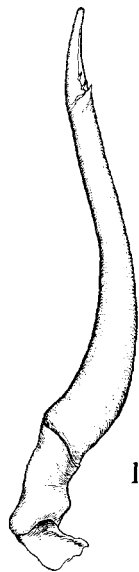
13a



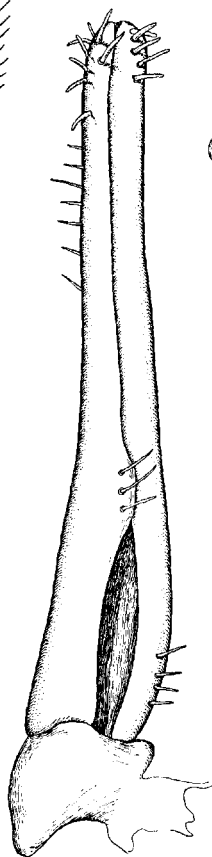
14



14a



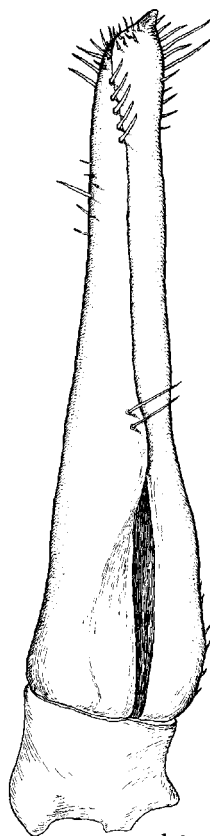
15a



15



16a

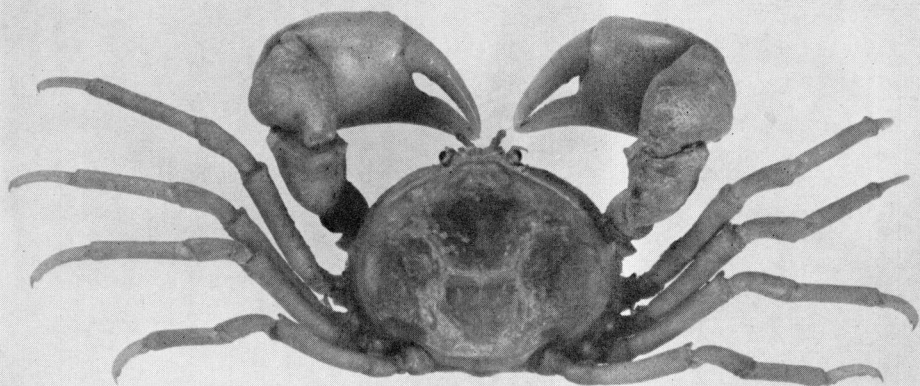


16

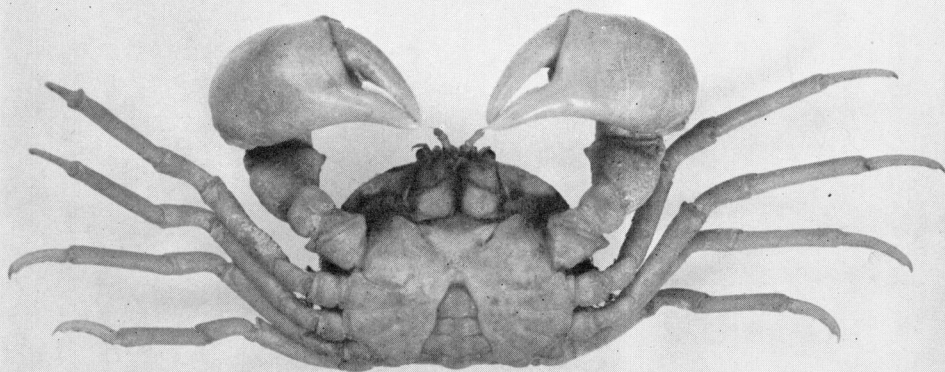
## PLATE 1

- Fig. 1. *Halicarcinus planatus* (Fabricius), male (L.U.C.E. Sta. M115), dorsal view.
- Fig. 2. Same specimen, ventral view.





1

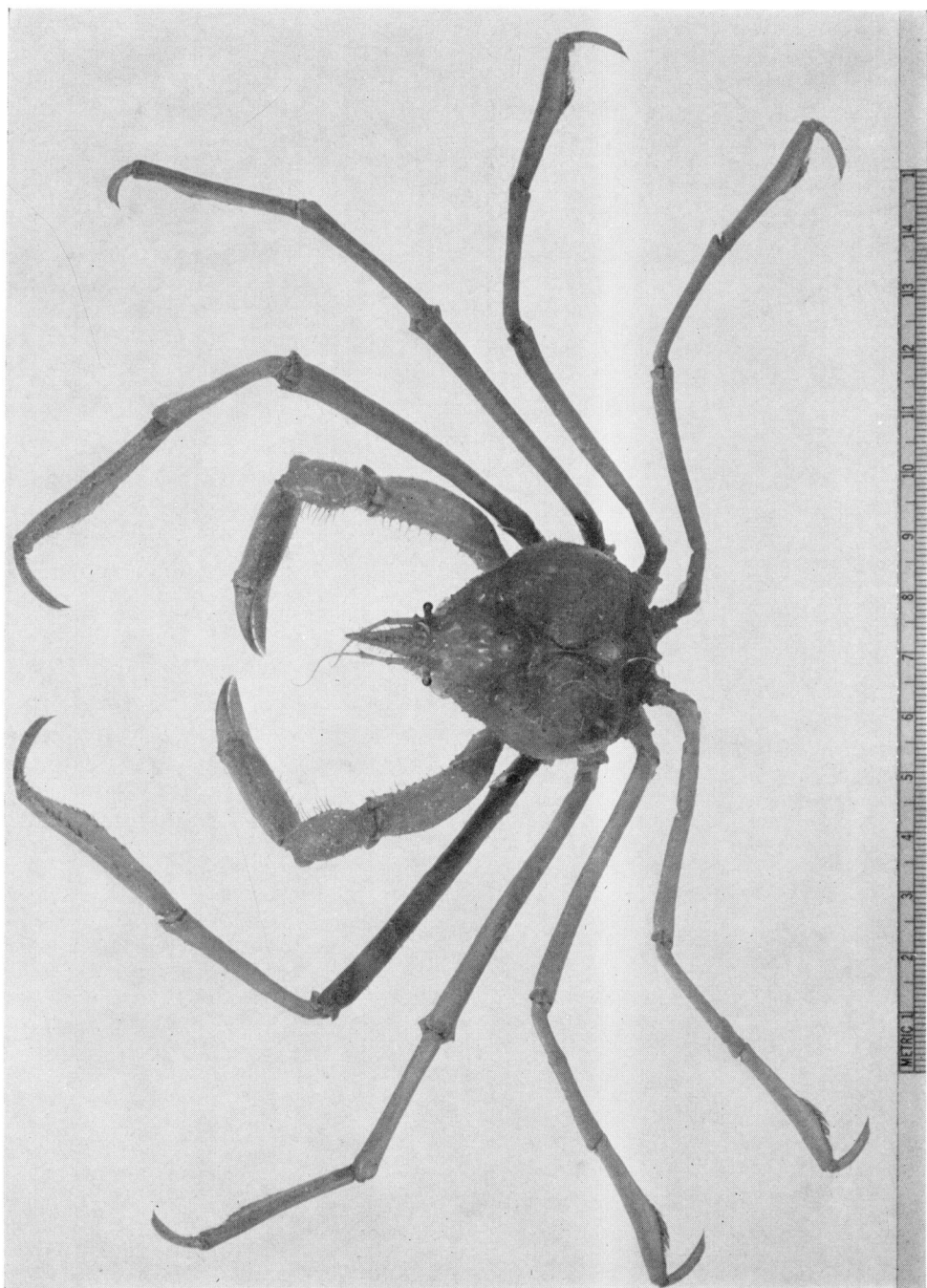


2



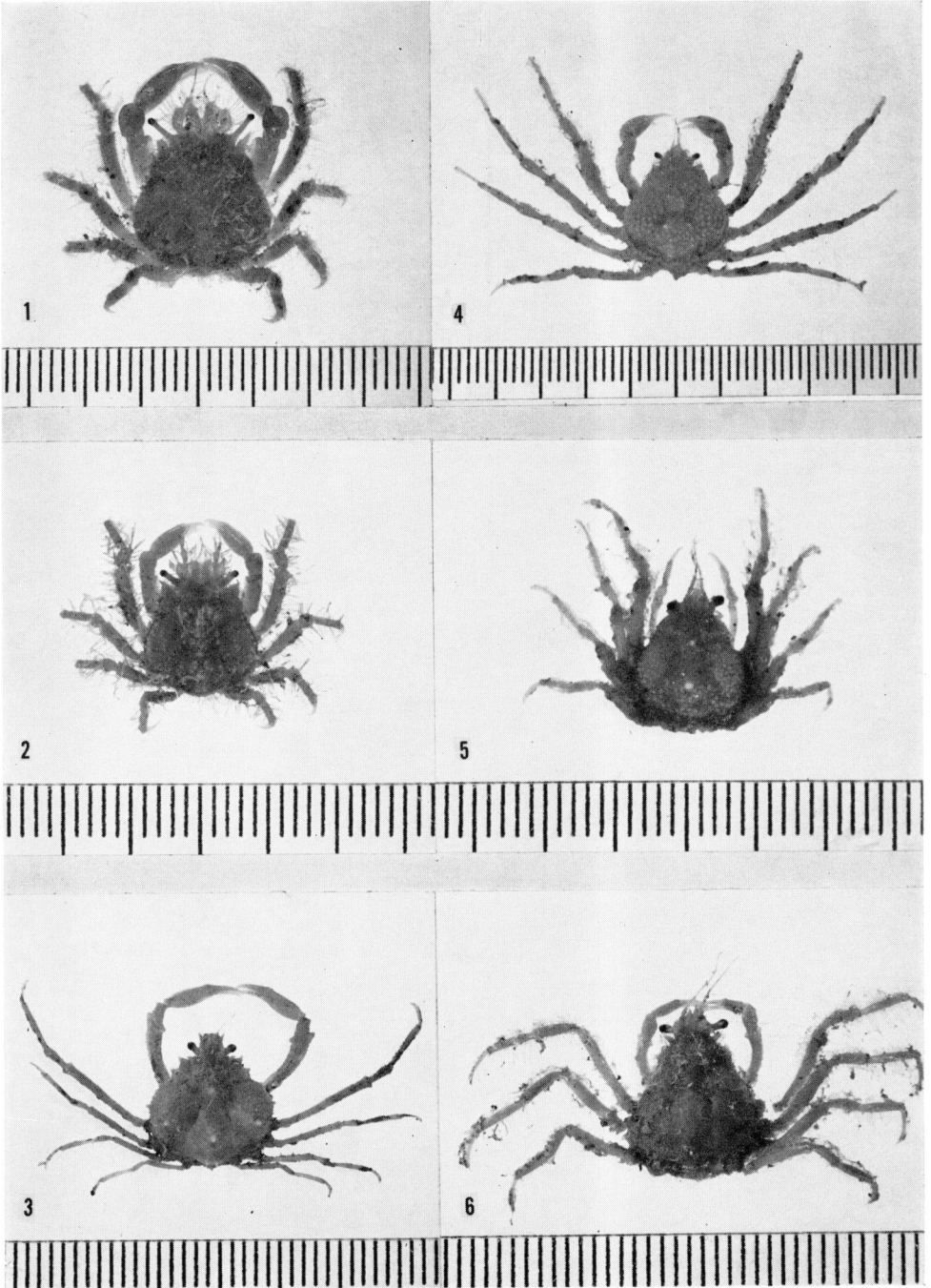
## PLATE 2

*Eurypodius latreillei* Guérin, male (*Veleiro III* Sta. 829-38),  
dorsal view.



## PLATE 3

- Fig. 1. *Eucinetops lucasi* Stimpson, male (*Velero III* Sta. 713-37), dorsal view.
- Fig. 2. *Eucinetops panamensis* Rathbun, male (*Velero III* Sta. 400-35), dorsal view.
- Fig. 3. *Euprognatha bifida* Rathbun, male (*Velero III* Sta. 747-37), dorsal view.
- Fig. 4. *Collodes gibbosus* (Bell), male (*Velero III* Sta. 850-38), dorsal view.
- Fig. 5. *Collodes granosus* Stimpson, female neotype (*Velero IV* Sta. 1724-49) (A.H.F. No. 495), dorsal view.
- Fig. 6. *Collodes tumidus* Rathbun, female (*Velero III* Sta. 576-36), dorsal view.

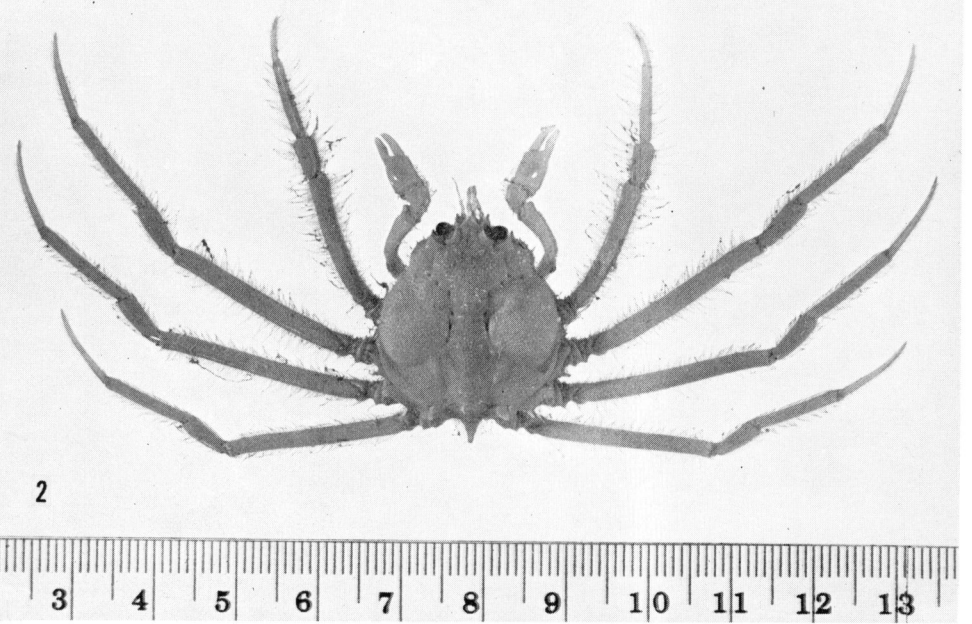


## PLATE 4

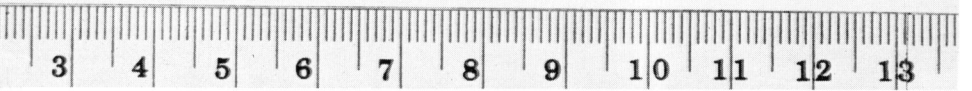
- Fig. 1. *Collodes robsonae*, new species, female holotype (Panama; (A.H.F. No. 397), dorsal view.
- Fig. 2. *Paradasygius depressus* (Bell), male neotype (*Velero III* Sta. 944-39) (A.H.F. No. 398), dorsal view.



1



2



## PLATE 5

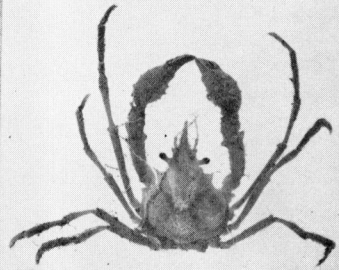
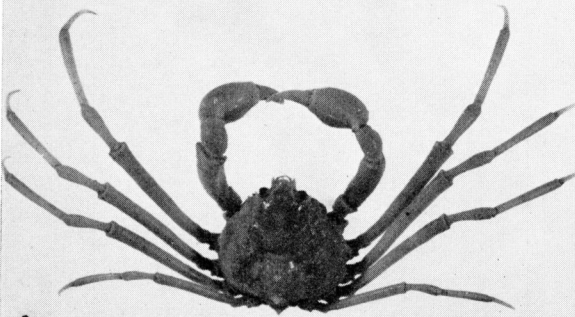
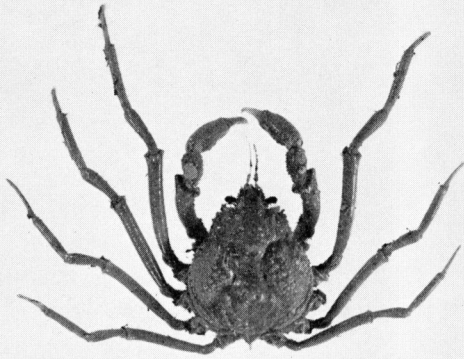
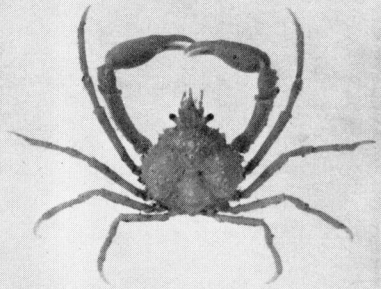
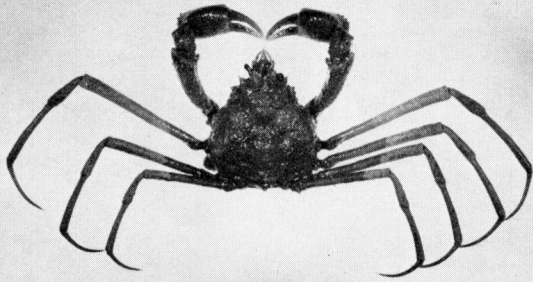
- Fig. 1. *Euprognatha granulata* Faxon, female above, male beneath  
(*Velero III* Sta. 792-38), dorsal view.
- Fig. 2. *Erileptus spinosus* Rathbun, female above, male beneath  
(*Velero IV* Sta. 1920-49), dorsal view.





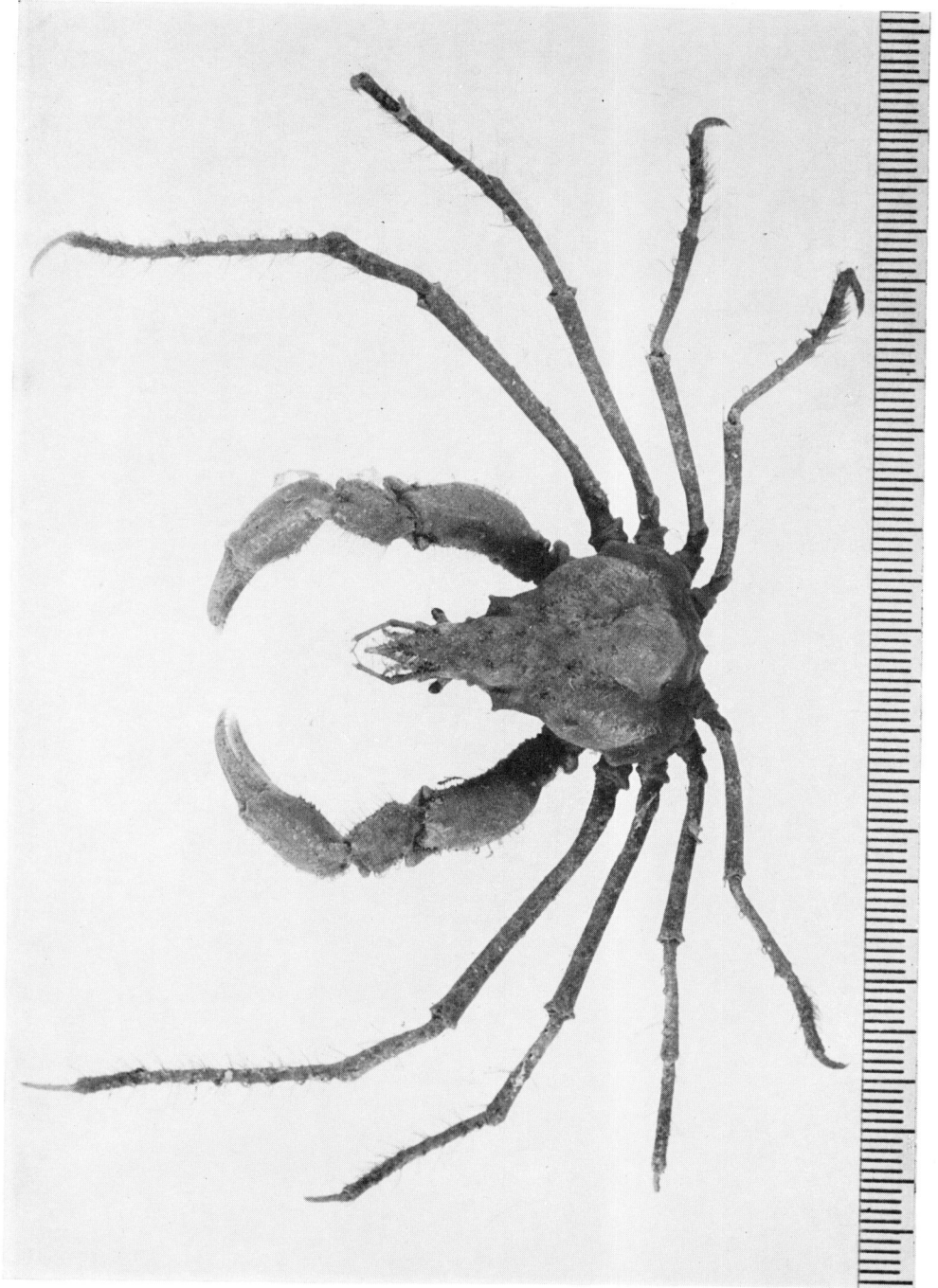
## PLATE 6

- Fig. 1. *Pyromaia tuberculata* (Lockington), male (Long Beach, California), dorsal view.
- Fig. 2. *Pyromaia tuberculata mexicana* (Rathbun), male (Sta. H47-53), dorsal view.
- Fig. 3. *Inachoides microrhynchus* Milne Edwards and Lucas, male (*Velero III* Sta. 845-38), dorsal view.
- Fig. 4. *Inachoides laevis* Stimpson, male (*Velero III* Sta. 1072-40), dorsal view.
- Fig. 5. *Collodes tenuirostris* Rathbun, male (*Velero III* Sta. 1054-40), dorsal view.



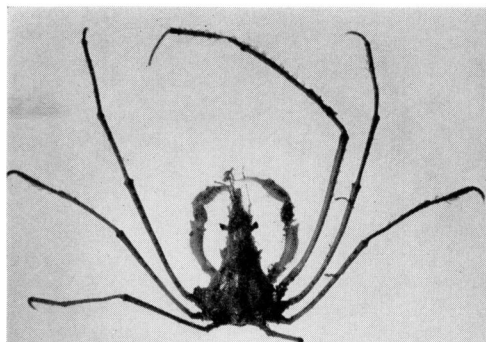
## PLATE 7

*Podochela hemphilli* (Lockington), male (*Vclero III* Sta.  
895-38), dorsal view.

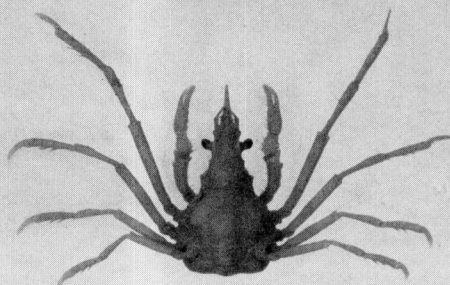


## PLATE 8

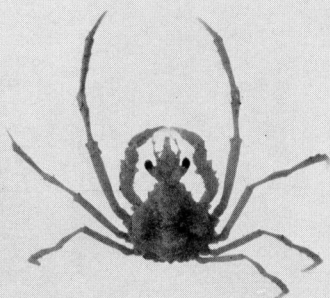
- Fig. 1. *Podochela lobifrons* Rathbun (= *P. barborensis* Rathbun), male (*Velero III* Sta. 1275-41), dorsal view.
- Fig. 2. *Podochela veleronis*, new species, male holotype (*Velero III* Sta. 971-39) (AHF No. 393), dorsal view.
- Fig. 3. *Podochela vestita* (Stimpson), male (N.Y.Z.S. No. 36697), dorsal view.
- Fig. 4. *Podochela latimanus* (Rathbun), female (*Velero III* Sta. 585-36), dorsal view.
- Fig. 5. *Podochela ziesenhennei* Garth, female (*Velero III* Sta. 239-34), dorsal view.
- Fig. 6. *Podochela angulata* Finnegan, male (*Velero III* Sta. 945-39), dorsal view.



1



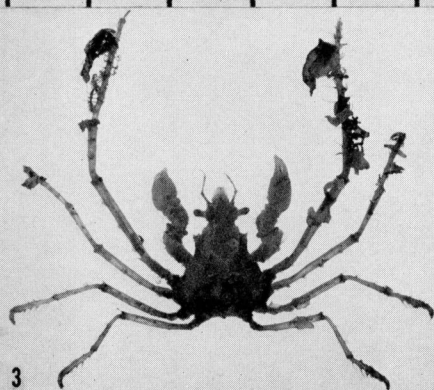
4



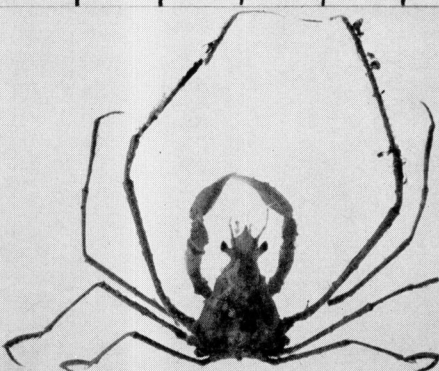
2



5



3

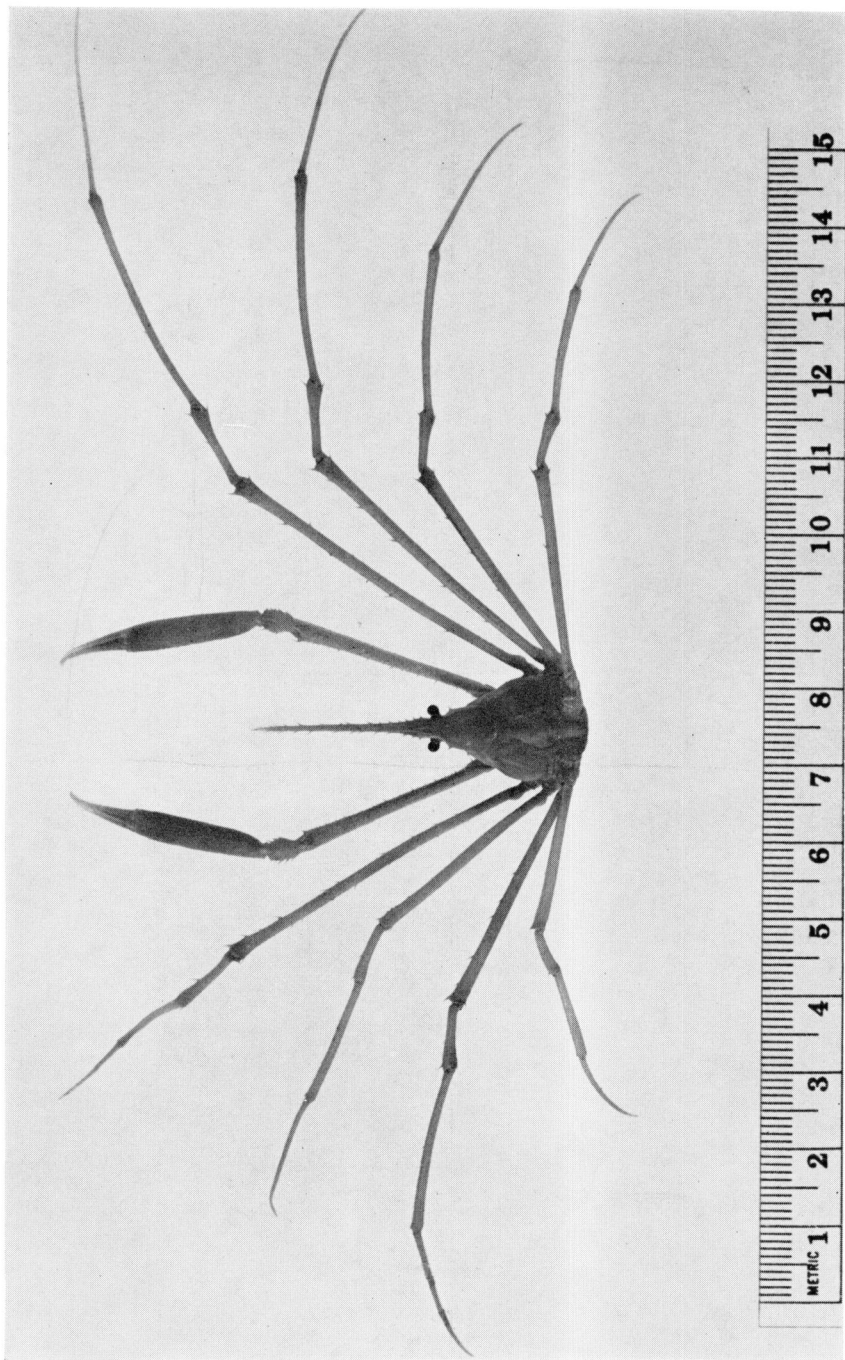


6

## PLATE 9

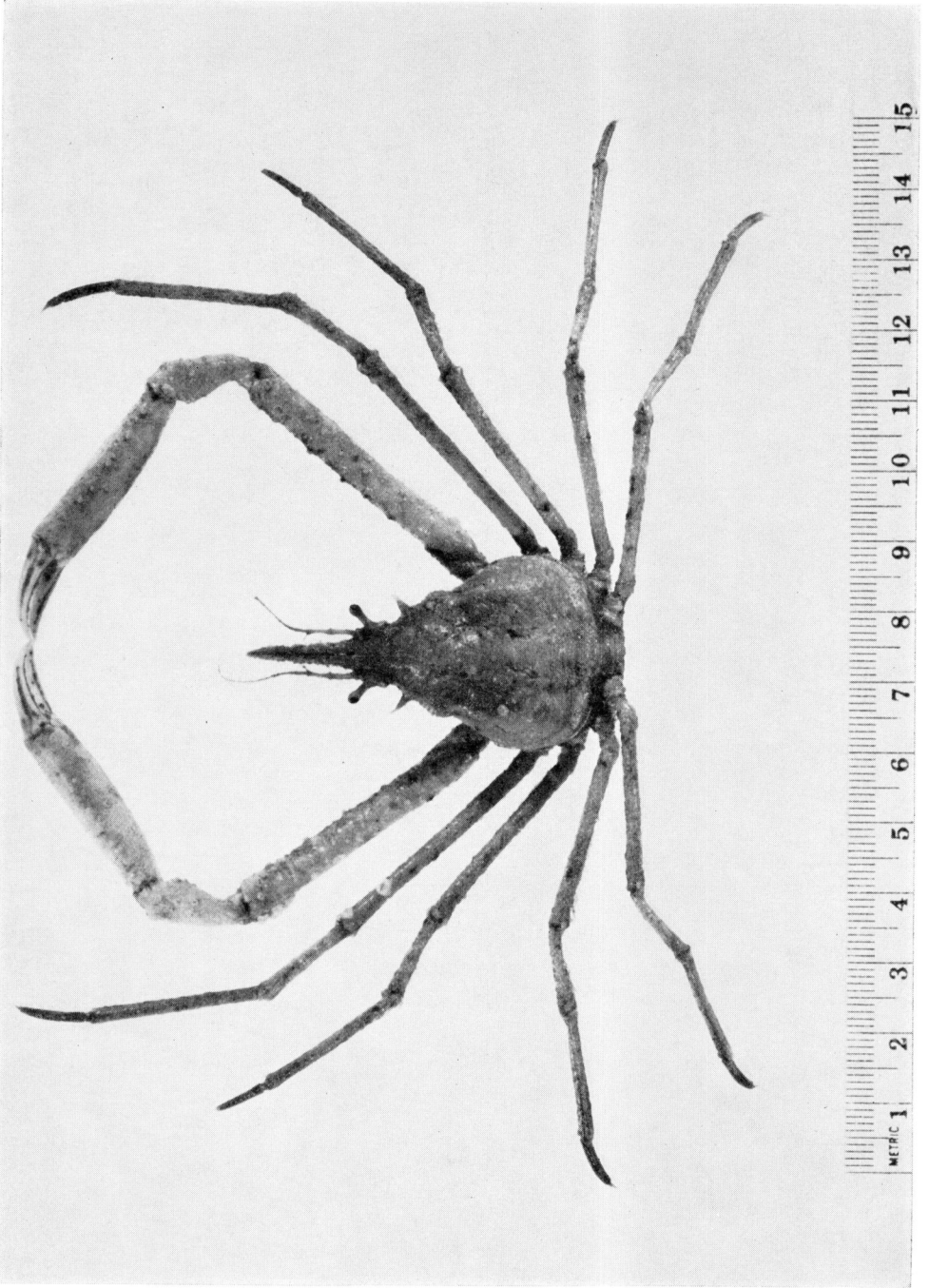
*Stenorynchus debilis* (Smith), male (*Velero III* Sta. 571-36), dorsal view; asymmetry of left legs 1, 2, and 4 probably due to regeneration.





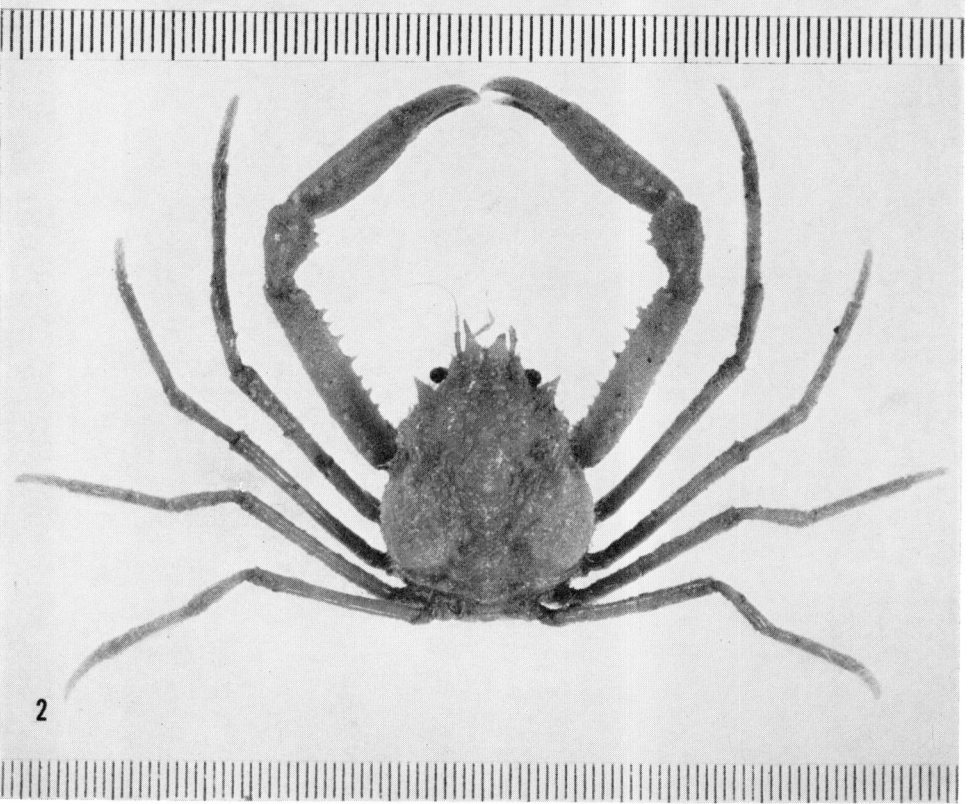
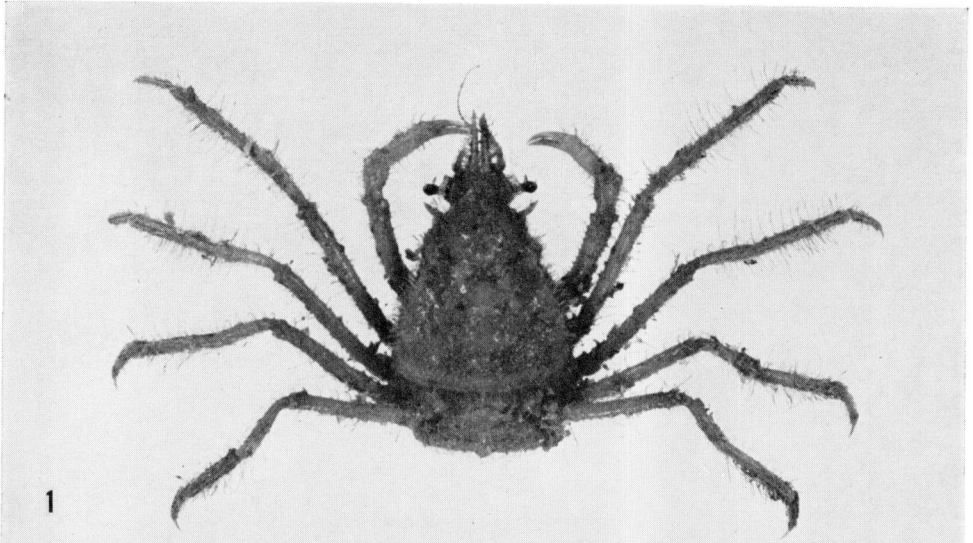
## PLATE 10

*Oregonia gracilis* Dana, male (Sucia Island, Washington),  
dorsal view.



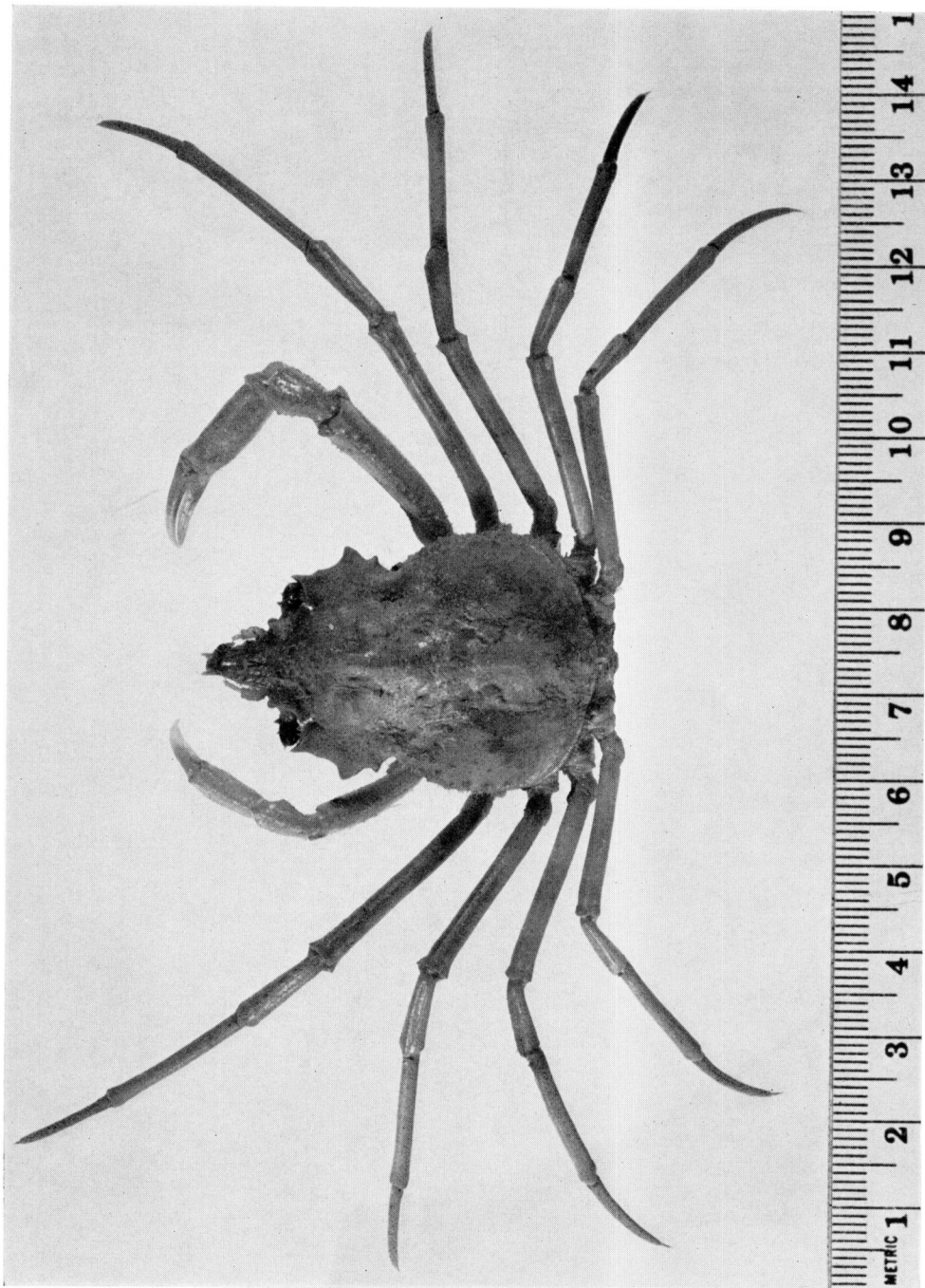
## PLATE 11

- Fig. 1. *Oregonia gracilis* Dana, female (Hancock Sta. 1498-42), dorsal view.
- Fig. 2. *Oregonia bifurca* Rathbun, male (U.S.N.M. No. 46488), dorsal view.



## PLATE 12

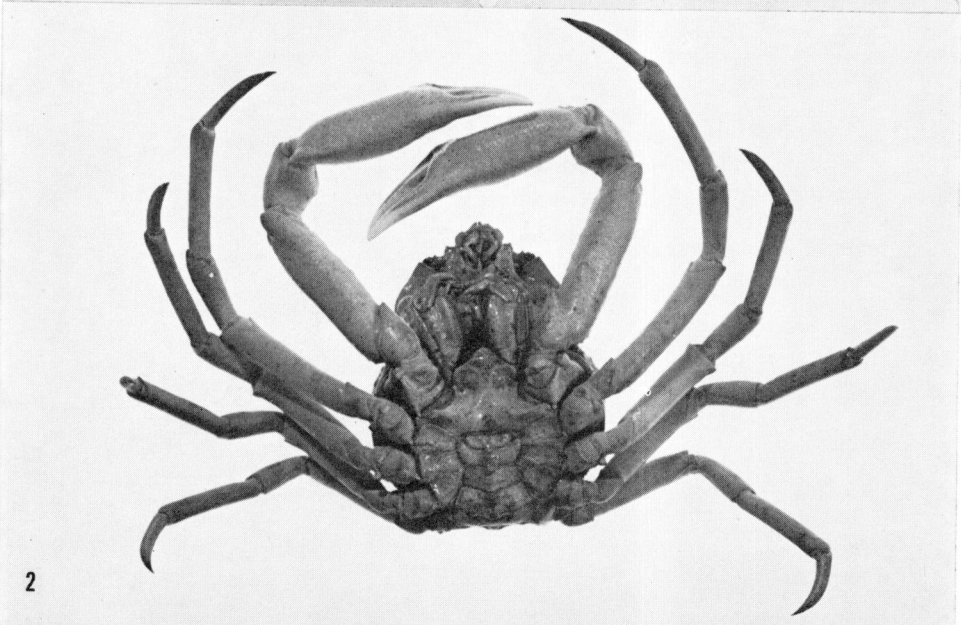
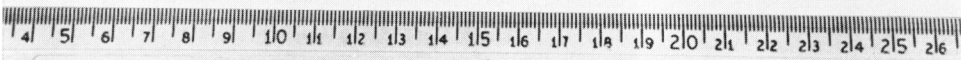
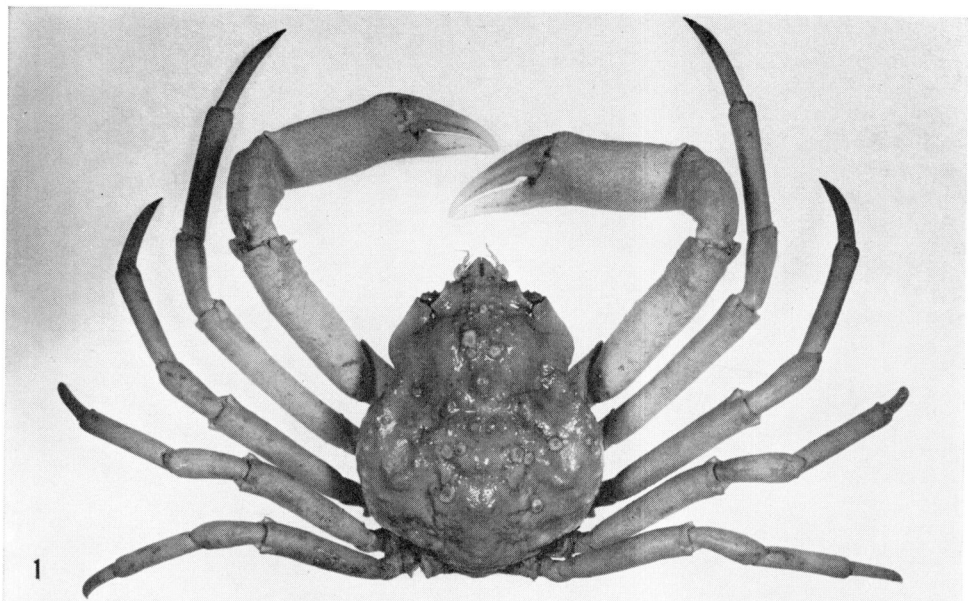
*Hyas lyratus* Dana, male (Washington State), dorsal view.



## PLATE 13

- Fig. 1. *Hyas coarctatus alutaceus* Brandt, male (Point Barrow, Alaska), dorsal view.
- Fig. 2. Same specimen, ventral view.





## PLATE 14

- Fig. 1. *Chionoecetes opilio* (O. Fabricius), male (U.S.N.M. No. 17075), dorsal view.
- Fig. 2. Same, ventral view.