

Fig. 2. — *Eryma tithonia*
Van Straelen.
Type. x 3.

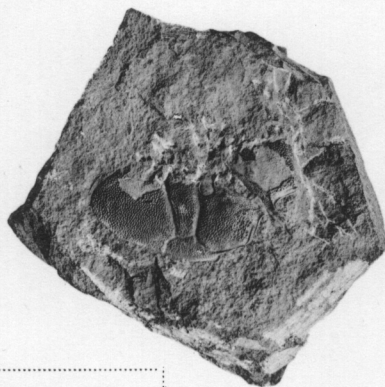


Fig. 1. — *Eryma tithonia*
Van Straelen.
Type. Gr. nat.

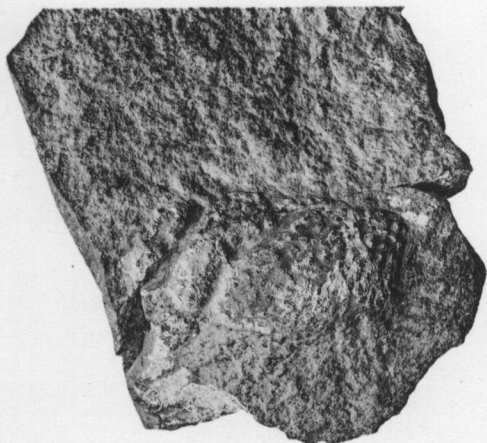


Fig. 3. — *Eryma tuberculata*
Van Straelen.
Type. Gr. nat.

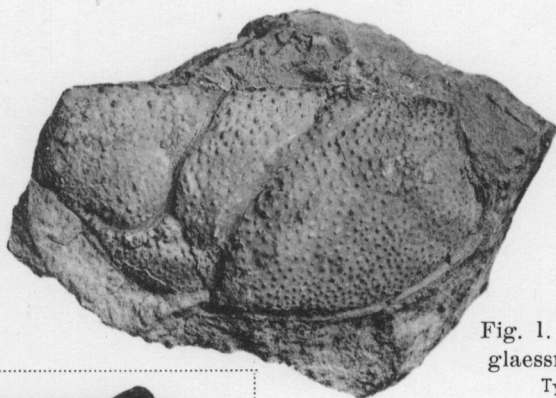


Fig. 1. — *Enoploclytia glaessneri* Van Straelen.
Type. Gr. nat.



Fig. 2. — *Homarus pelseneeri* Van Straelen.
Type. Gr. nat.

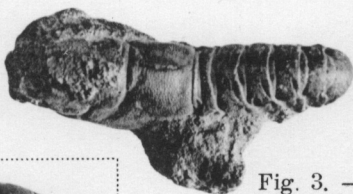


Fig. 3. — *Homarus pelseneeri* Van Straelen.
Paratype. Gr. nat.

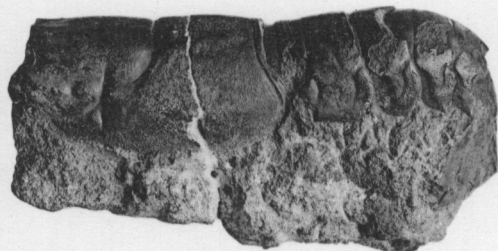


Fig. 4. — *Homarus trigeri*
(A. Milne-Edwards MS.) Topotype. Gr. nat.



Fig. 5.
Galatheites neocomiensis Van Straelen.
Type. Gr. nat.



Fig. 8. — *Prosopon icaunensis*
Van Straelen.
Type. x 3.



Fig. 7.
Prosopon icaunensis
Van Straelen.
Type. Gr. nat.

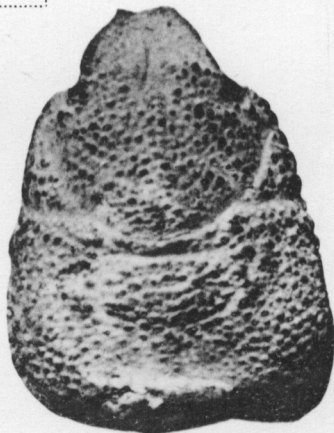


Fig. 6. — *Galatheites neocomiensis* Van Straelen.
Type. x 6.



Fig. 1. — *Pithonoton planum* Van Straelen.
Type. Gr. nat.

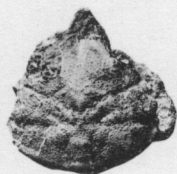


Fig. 3. — *Cyclothyreus autissiodorensis*
Van Straelen.
Type. Gr. nat.



Fig. 6. — *Paranecrocarcinus hexagonalis* Van Straelen.
Type. Gr. nat.

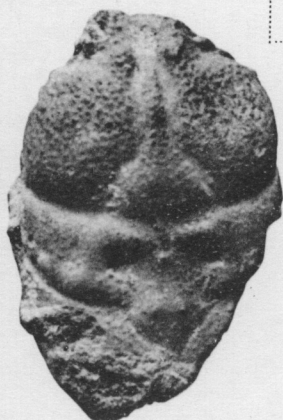


Fig. 2. — *Pithonoton planum* Van Straelen.
Type. x 4.



Fig. 4. — *Homolopsis tuberculata*
Van Straelen.
Type. Gr. nat.



Fig. 7. — *Paranecrocarcinus hexagonalis* Van Straelen.
Type. x 3.



Fig. 5. — *Homolopsis spinosa*
Van Straelen.
Type. Gr. nat.



Fig. 9. — *Lithophylax trigeri*
A. Milne-Edwards et Brocchi.
Topotype. Gr. nat.

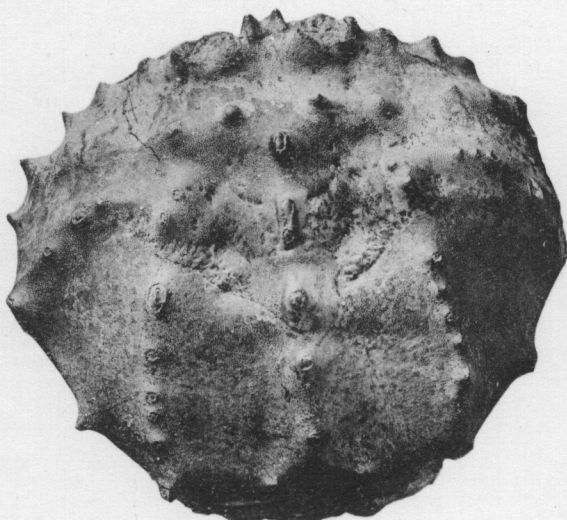


Fig. 8. — *Cenomanocarcinus inflatus*
(A. Milne-Edwards MS.)
Topotype. Gr. nat.

GOEMAERE, Imprimeur du Roi, Bruxelles.