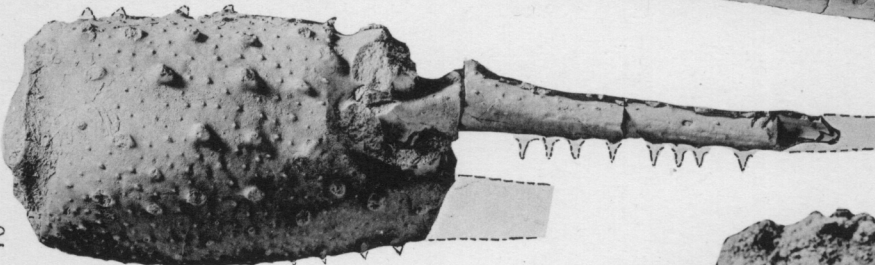


1



2



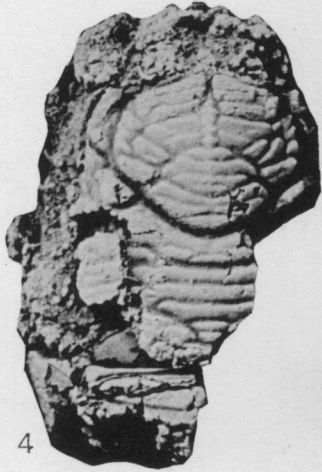
7

ORBIT ORBIT



3

ABDOMEN

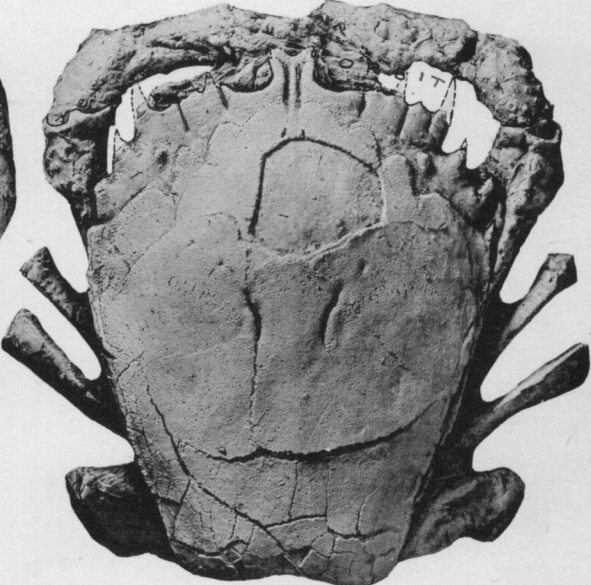


4



6

ENDOSTERNUM



5

PLATE 44

	PAGE
<i>Cenomanocarcinus vanstraeleni</i> Stenzel, n.sp.	447
1. Dorsal view of carapace, partly decorticated, syntype 2, x2.	
2. Dorsal view of incomplete carapace of old individual with original epidermal sculpture preserved, syntype 1, x1 $\frac{1}{8}$.	
3. Ventral view showing parts of the first 4 leg pairs, mouth parts, and appressed abdomen, syntype 3, x1.	
4. Ventral view showing stumps of some legs, sternum, and appressed abdomen, syntype 4, x1 $\frac{1}{8}$.	
5. Ventral view of left anterior part of a carapace with part of left cheliped and first left ambulatory leg, syntype 5, x1 $\frac{1}{8}$.	
6. Outer surface view of a pair of chelae, of which the right chela is almost complete and the left represented by the fingertips. The distance between the two is as found in the matrix and is presumably the original natural one, syntype 6, x1 $\frac{1}{8}$.	
From California Crossing, north-facing bluff on right bank of Elm Fork of Trinity River upstream from and at Chicago, Rock Island & Pacific Railroad bridge, in southwest corner of Joshua McCants survey, on O'Connor dairy land, about 10 miles northwest of Dallas, Dallas County, Texas; Britton formation of Eagle Ford group, Gulf series, Cretaceous (lower Turonian or Salmurian).	

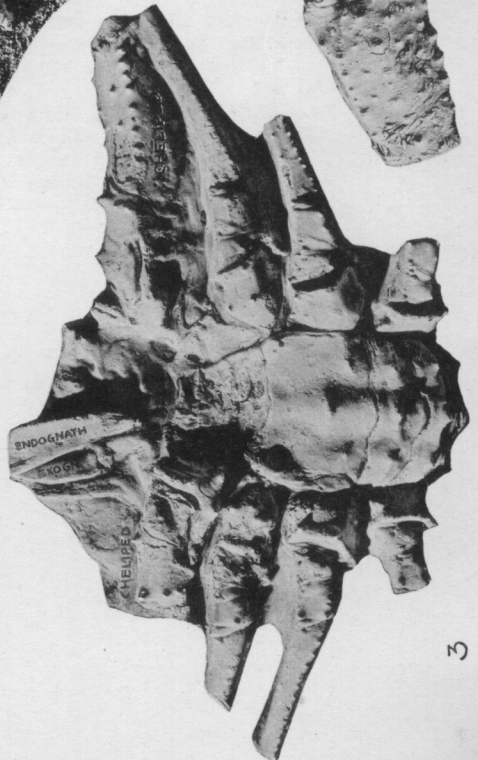
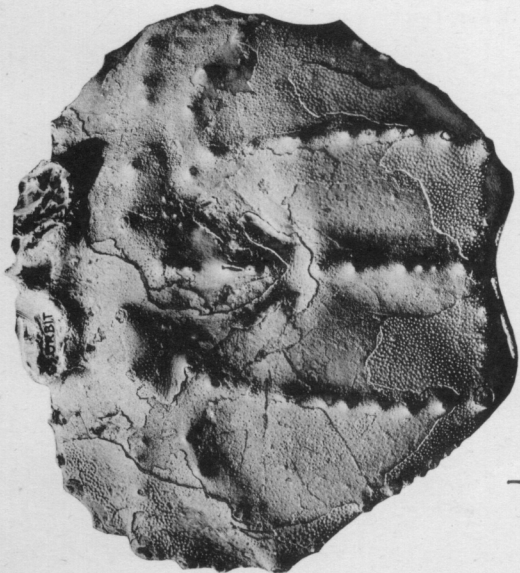
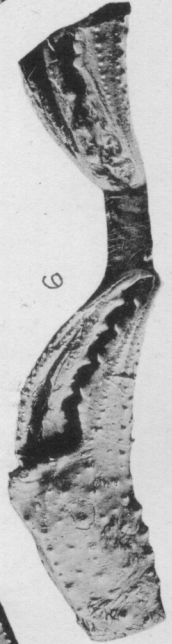
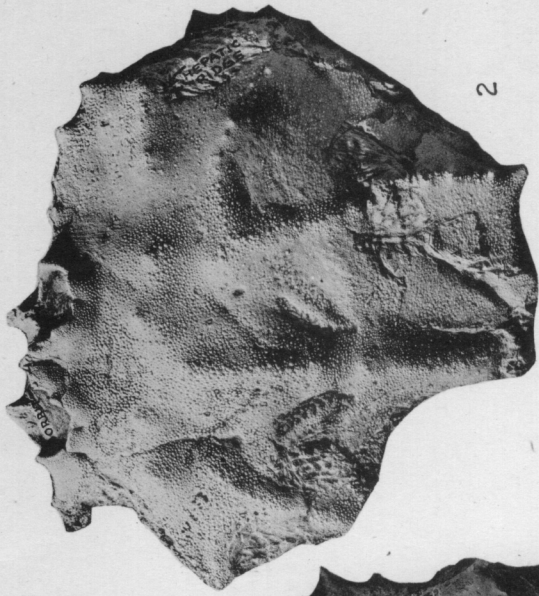


PLATE 45

	PAGE
<i>Linuparus watkinsi</i> Stenzel, n.sp., x2.....	408
1. Dorsal view of carapace, syntype 1.	
2. Oblique ventral view of specimen showing mandibles, parts of legs, and abdomen complete and curved under, syntype 4 (compare Pl. 34, fig. 6). From California Crossing, north-facing bluff on right bank of Elm Fork of Trinity River upstream from and at Chicago, Rock Island & Pacific Railroad bridge, in southwest corner of Joshua McCants survey, on O'Connor dairy land, about 10 miles northwest of Dallas, Dallas County, Texas; Britton formation of Eagle Ford group, Gulf series, Cretaceous (lower Turonian or Salmurian).	
<i>Linuparus grimmeri</i> Stenzel, n.sp., x2.....	406
3. Dorsal view of abdomen with segments 2 to 6, syntype 5. From California Crossing, north-facing bluff on right bank of Elm Fork of Trinity River upstream from and at Chicago, Rock Island & Pacific Railroad bridge, in southwest corner of Joshua McCants survey, on O'Connor dairy land, about 10 miles northwest of Dallas, Dallas County, Texas; Britton formation of Eagle Ford group, Gulf series, Cretaceous (lower Turonian or Salmurian).	
<i>Astacodes maxwelli</i> Stenzel, n.sp., x $\frac{2}{3}$	410
4. Dorsal view of carapace with left eye preserved, syntype 5.	
5. Dorsal view of specimen with right eye preserved and abdomen partly rolled under, syntype 3.	
6. Right side of specimen, syntype 2. From quarries on east side of State highway No. 188 (Roxton-High road) extending from the vicinity of Arkansas Church, 2.1 miles, to 1.1 mile north of the railway depot in Roxton, southwestern Lamar County, Texas. Roxton limestone, top part of Gober chalk tongue of Austin chalk, Gulf series, Cretaceous (Santonian).	
<i>Pagurus banderensis</i> Rathbun, x2.....	435
7-9. Outer, inner, and upper views of a complete right chela.	
10, 11. Inner and outer views of a left chela complete except for movable finger.	
12, 13. Occludent and lower views of a fixed right finger.	
14, 15. Two views of a fragment of an ambulatory leg. From State highway No. 16 (Bandera-Pipe Creek road), 2 miles east of Bandera, Bandera County, Texas. Glen Rose formation, Comanche series, Cretaceous (lower Albian).	
<i>Pagurus travisensis</i> Stenzel, n.sp., monotype, x2.....	437
16-18. Outer, inner, and upper views of right manus. From cut on south side of road on road leading from Bull Creek valley westward to Lake Austin Park and abandoned CCC Camp MA-3-T, CO No. 1805, 0.7 mile from road fork in West Bull Creek valley, 1 mile north of Lake Austin or 3.4 miles northwest of Mount Bonnell (airline distance), northwest of Austin, Travis County, Texas. Nodular, fossiliferous limestone, basal bed of Comanche series, Cretaceous (middle Albian).	