

CRUSTACEA FROM THE EOCENE

## PLATE 20—CRUSTACEA FROM THE EOCENE

FIGURES 1, 2.—*Zanthopsis carolinensis* Rathbun, n.sp. Ventral view showing sternum and abdomen, and dorsal view of carapace,  $\times .72$ , Cat. No. 371586; from lower Claiborne, at Creston, Orangeburg County, South Carolina. [See page 90.]

FIGURES 3-16.—*Xanthilites alabamensis* Rathbun, n.sp. Frontal, ventral, and dorsal views of holotype,  $\times 1.44$ , Cat. No. 371708; outer and prehensile views of fixed finger,  $\times 1.44$ , Cat. No. 371690; posterior and ventral views of paratype,  $\times 2.16$ , Cat. No. 371708; upper and outer views of right carpus and propodus of cheliped,  $\times 2.16$ , Cat. No. 371690; dorsal view for detail (284),  $\times 2.16$ , Cat. No. 371707; outer view of right major palm with dactylus,  $\times 2.16$ , Cat. No. 371690; ventral view of ♀,  $\times 2.16$ , Cat. No. 371708; ventral view showing antennal and antennular articles (284),  $\times 2.89$ , Cat. No. 371707; and ventral view showing maxilliped,  $\times 2.16$ , Cat. No. 371708; all from Sucarnoochee beds at Prairie Creek (264) or Pine Barren section (284), Wilcox County, Alabama. [See page 91.]

## PLATE 21—CRUSTACEA FROM THE EOCENE AND THE OLIGOCENE

FIGURES 1-3.—*Stenocionops suwanneeana* Rathbun, n.sp. Outer, upper, and distal views,  $\times 1.08$ , Cat. No. 137885; from Ocala limestone, Eocene, at Rowland's Bluff, Suwannee County, Florida. [See page 95.]

FIGURES 4-6.—*Callinectes alabamensis* Rathbun, n.sp. Distal, upper, and outer views of left manus,  $\times 1.44$ ; Johns Hopkins University; from Byram marl (?), Vicksburg group, at Perdue Hill, Monroe County, Alabama. [See page 98.]

FIGURES 7-8.—*Ranina georgiana* Rathbun, n.sp. Right profile and dorsal view of carapace,  $\times 1.08$ , Cat. No. 371714; from Glendon limestone, Vicksburg group, at old factory about  $1\frac{1}{2}$  miles above Bainbridge, Decatur County, Georgia. [See page 97.]

FIGURES 9-11.—*Harpactocarcinus mississippiensis* Rathbun, n.sp. Frontal, dorsal, and ventral views of ♀,  $\times .72$ , Cat. No. 371577; from Jackson formation, in large ravine below old reservoir at Yazoo City about one mile south of the Y. and M. V. R. R. station, along street-car line, Yazoo County, Mississippi. [See page 88.]

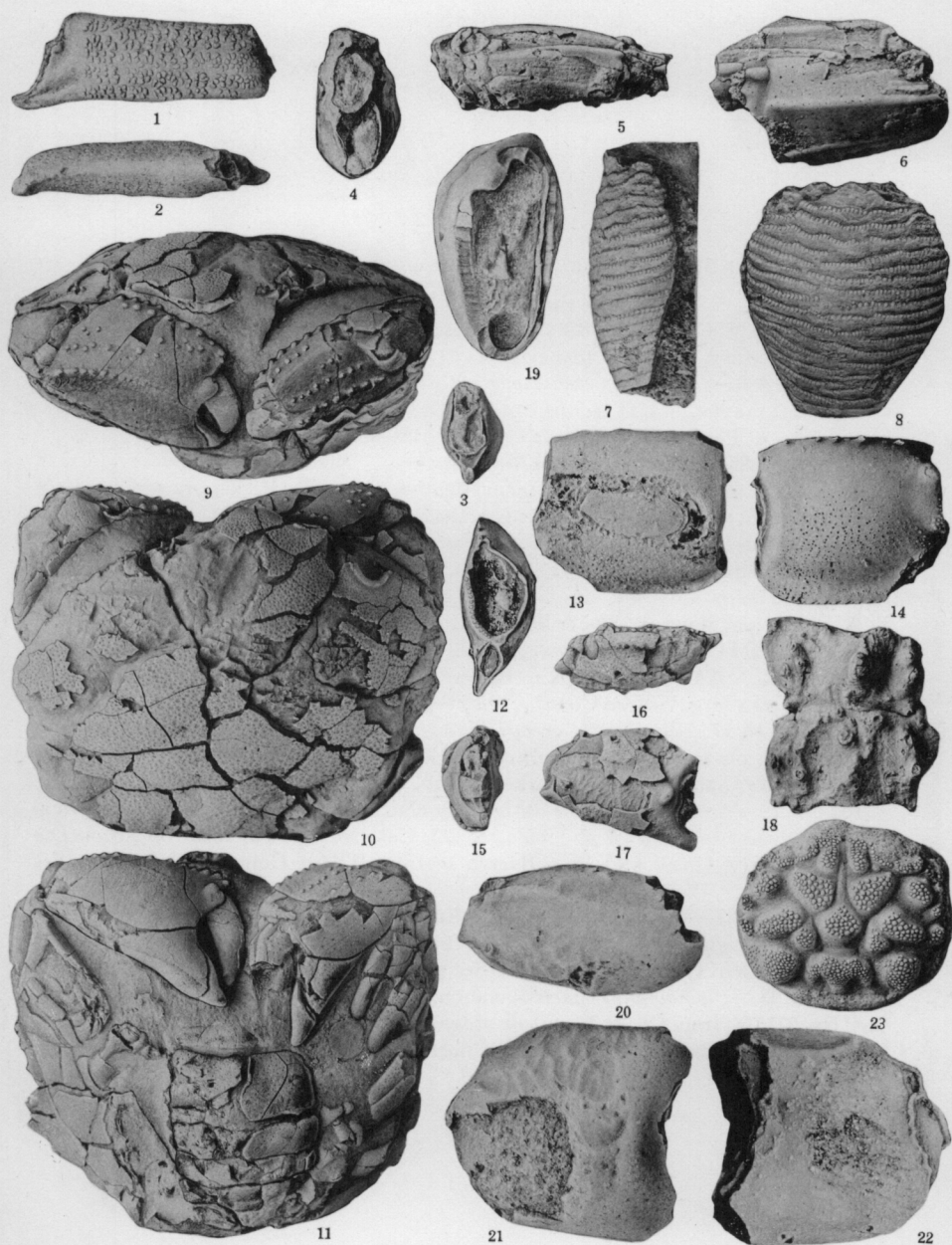
FIGURES 12-14.—*Callianassa berryi* Rathbun, n.sp. Distal, outer, and inner views of left manus,  $\times 1.44$ ; Johns Hopkins University; from Glendon limestone, Vicksburg group, at Vicksburg, Warren County, Mississippi. [See page 96.]

FIGURES 15-17.—*Zanthopsis errans* Woods. Distal, upper, and outer views of right manus, outer layer fragmentary,  $\times 1.08$ , Cat. No. 139148; from Wahtubbee horizon, lower Claiborne, from Clarke County, Mississippi. [See page 90.]

FIGURE 18.—*Scyllarella aspera* Rathbun, n.gen. and sp. Carapace behind cervical suture and first segment of abdomen,  $\times .72$ , Cat. No. 371503; from Sucarnoochee beds, at Prairie Creek and Pine Barren section, Wilcox County, Alabama. [See page 77.]

FIGURES 19-22.—*Galenopsis americana* Rathbun, n.sp. Distal, upper, outer, and inner views of right palm,  $\times 2.16$ , Cat. No. 371743; from the Midway of the Pine Barren region, Wilcox County, Alabama. [See page 93.]

FIGURE 23.—*Plagiolophus bakeri* Rathbun, n.sp. Dorsal view of carapace,  $\times 1.44$ , Cat. No. 371574; from Cooks Mountain stage of lower Claiborne of the horizon of the Moseley Ferry beds, at Moseley's Ferry, northwestern Brazos County, Texas. [See page 94.]



CRUSTACEA FROM THE EOCENE AND THE OLIGOCENE