

CRUSTACEA FROM THE CRETACEOUS

## PLATE 6—CRUSTACEA FROM THE CRETACEOUS

FIGURES 1-6.—*Hoploparia blossomana* Rathbun, n.sp. From Blossom sand, about a quarter of a mile west of Detroit, Red River County, Texas, Cat. No. 73829. [See page 26.]

1-5.—Lower, inner, upper, and outer views and cross-section of proximal end of left manus,  $\times 1.44$ . 6.—Proximal inner part of upper surface of left manus,  $\times 7.2$ .

FIGURES 7, 8.—*Enoploclytia wenoensis* Rathbun, n.sp. Right profile and dorsal view of abdomen,  $\times 1.44$ ; W. S. Adkins, University of Texas; from Weno formation, at Gainesville, Cooke County, Texas, in brickyard pit. [See page 20.]

FIGURES 9-11.—*Paguristes ouachitensis* Rathbun, n.sp. Outer, lower, and distal views of left palm,  $\times 2.16$ , Cat. No. 73828; from Nacatoch sand at high bluff on Ouachita River, 1.5 miles above Arkadelphia, Clark County, Arkansas, from lower masses at base of bluff. [See page 39.]

FIGURES 12-16.—*Callianassa cretacea* Rathbun, n.sp. [See page 30.]

12-15.—Inner, lower, upper, and distal views of right manus, holotype,  $\times 2.16$ ; W. S. Adkins (284), University of Texas; from Denton clay, southeast of Haslet and east of Blue Mound. 16.—Dorsal view of segments 3-6 of abdomen,  $\times 1.44$ ; W. S. Adkins (209), University of Texas; from Pawpaw clay,  $4\frac{1}{2}$  miles southeast of Fort Worth, a quarter of a mile south of I. G. N. Railway bridge across Sycamore Creek.

FIGURES 17-19.—*Callianassa oktibbehana* Rathbun, n.sp. Upper, outer, and inner views of right movable finger,  $\times 2.89$ , Cat. No. 73825; from Oktibbeha tongue of Selma chalk, in gullies on campus of Agricultural and Mechanical College, Oktibbeha County, Mississippi. [See page 33.]

FIGURE 20.—*Hoploparia tarrantensis* Rathbun, n.sp. Side view of abdomen tipped a little to right to show telson,  $\times 2.16$ ; W. S. Adkins (284), University of Texas; from Denton clay, at Blue Mound, near Haslet, Tarrant County, Texas. [See page 27.]

## PLATE 7—CRUSTACEA FROM THE CRETACEOUS

FIGURES 1-5.—*Callianassa aquilae* Rathbun, n.sp. Eagle Ford formation. [See page 31.]

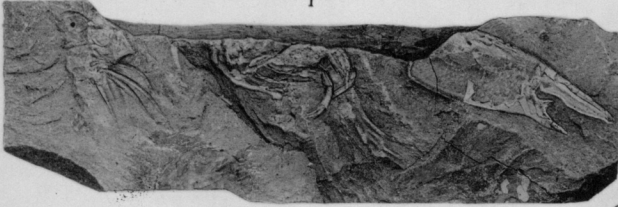
1, 2.—Left profile and counterpart of holotype,  $\times 1.44$ , Cat. No. 73786; from  $1\frac{1}{2}$  miles northeast of Sherman Junction, Grayson County, Texas, in public road ditch near base of north-facing slope of branch. 3.—Carapace and chela,  $\times 2.16$ , Cat. No. 73785; from Sec. 3, T. 11 N., R. 8 W., Natchitoches Parish, in well of Amerada Petroleum Company, Wafer No. 1, depth 3165-3168 feet. 4, 5.—Portion of animal and appendages, and counterpart of the same,  $\times 2.16$ , Cat. No. 73784; from Sec. 5, T. 13 N., R. 9 W., Red River Parish, in well of Amerada Petroleum Company; Long Bell No. 1, depth 2893-2903 feet.

FIGURES 6-11.—*Callianassa pilsbryi* Rathbun, n.sp. Outer view of right manus, holotype,  $\times 1.44$ ; outer view of left manus,  $\times 1.44$ ; outer and inner views of left wrist,  $\times 1.44$ ; inner and outer views of fixed finger,  $\times 2.16$ ; Cat. No. 73789; from Ripley formation, at Frisco Railroad bridge (No. 5710),  $2\frac{1}{2}$  miles northwest of Blue Springs, Union County, Mississippi. [See page 32.]

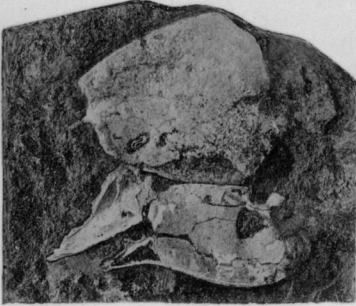
FIGURES 12-15.—*Callianassa valida* Rathbun, n.sp. Inner, outer, upper, and lower views of propodus of left cheliped,  $\times 2.89$ ; W. S. Adkins (210), University of Texas; from Denton clay, 2 miles north of Denison, Grayson County, Texas, half a mile east of Kde type-locality of south side St. L. S. F. Railway track. [See page 33.]



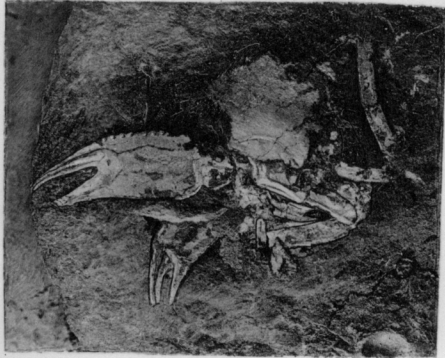
1



2



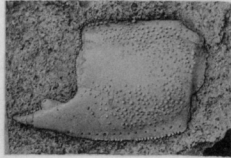
3



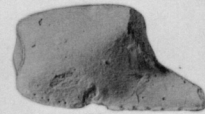
5



6



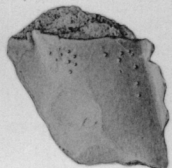
7



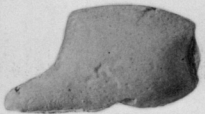
12



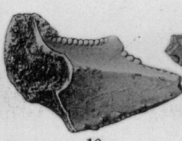
8



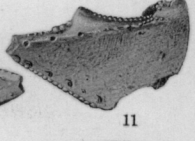
9



13



10



11



14



15



4

CRUSTACEA FROM THE CRETACEOUS