



1



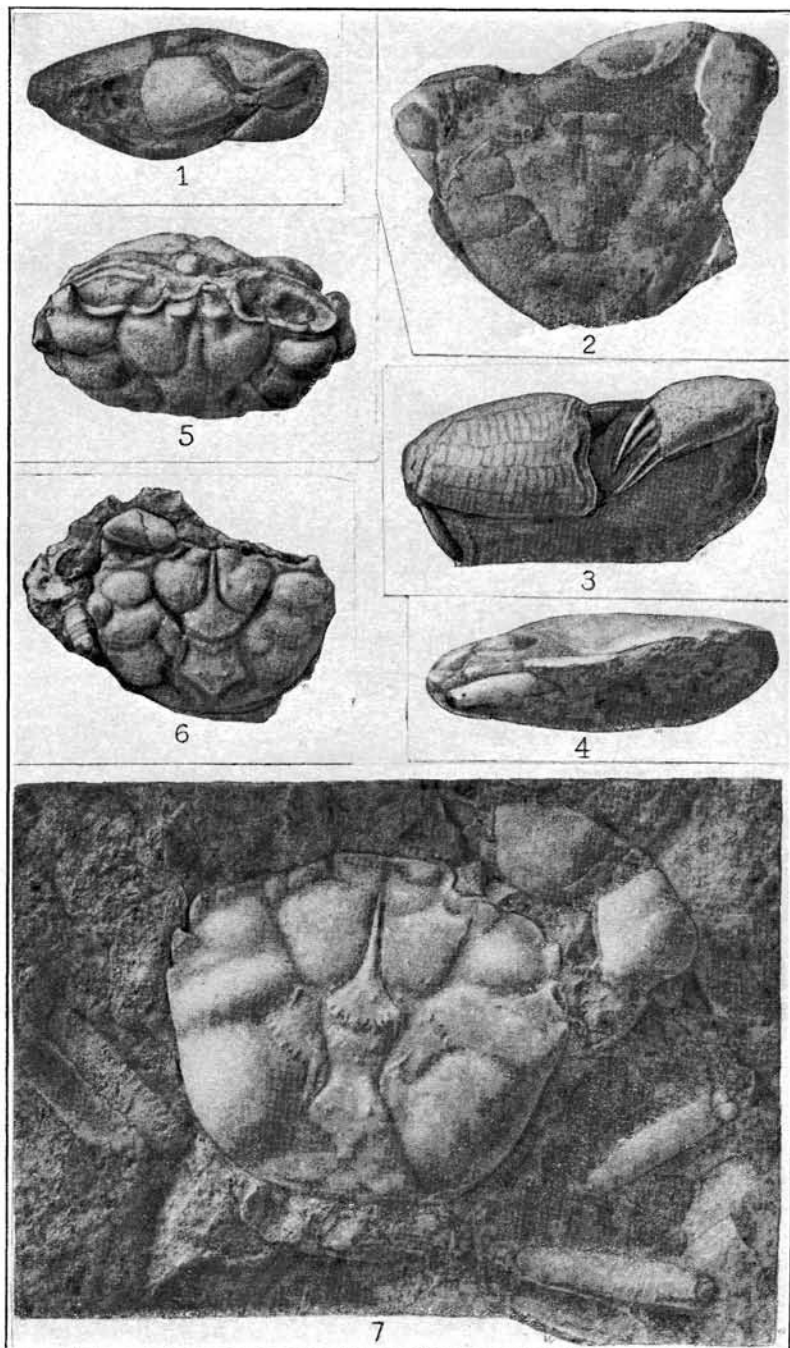
2



3

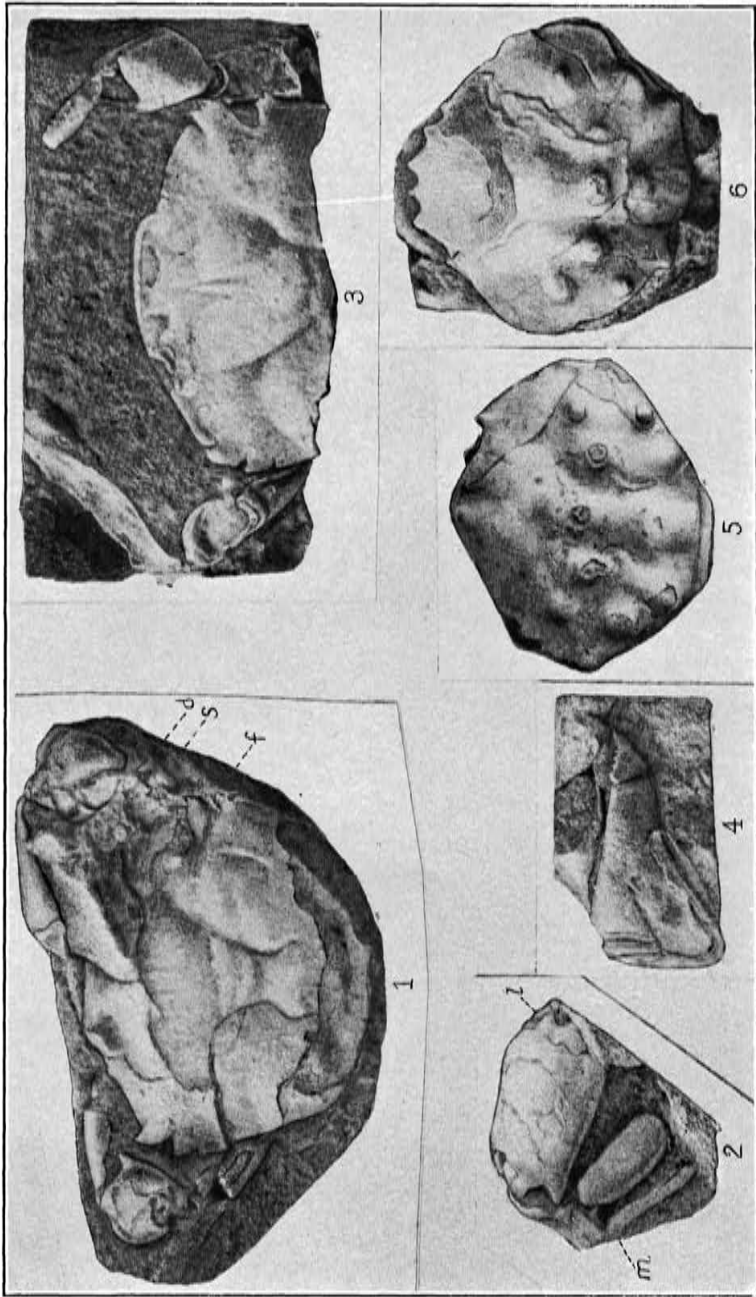
1. *UCA* HAMLINI. (PAGE 30.) 2, 3. *EUCRATE* MARTINI (PAGE 44)

FOR EXPLANATION OF PLATE SEE PAGE 141



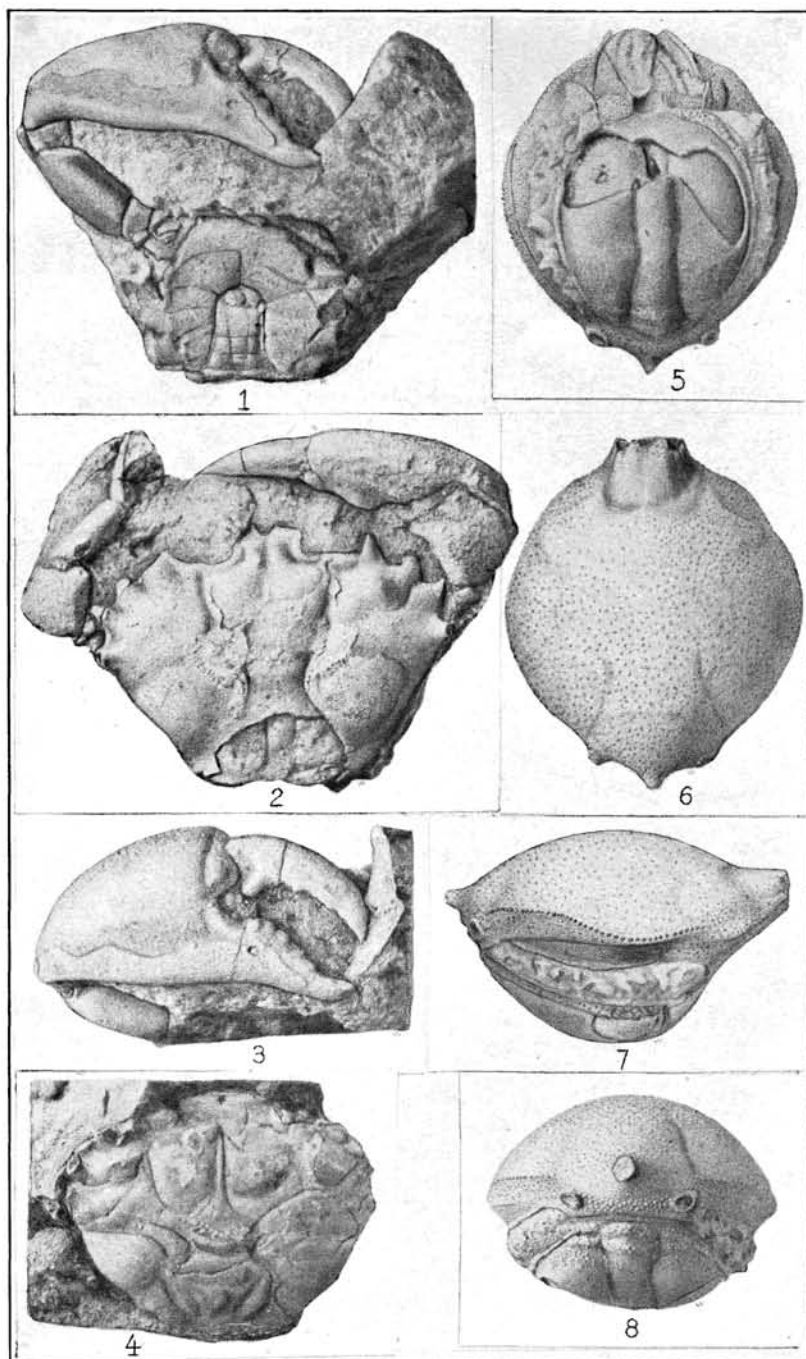
1-4. *PILUMNOPLAX* *CARMAHANSIS*. (PAGE 38.) 5, 6. *PLAGIOLOPHUS* *WEAVERI*. (PAGE 35.) 7. *BRANCHIOPLAX* *WASHINGTONIANA*. (PAGE 42)

FOR EXPLANATION OF PLATE SEE PAGE 142



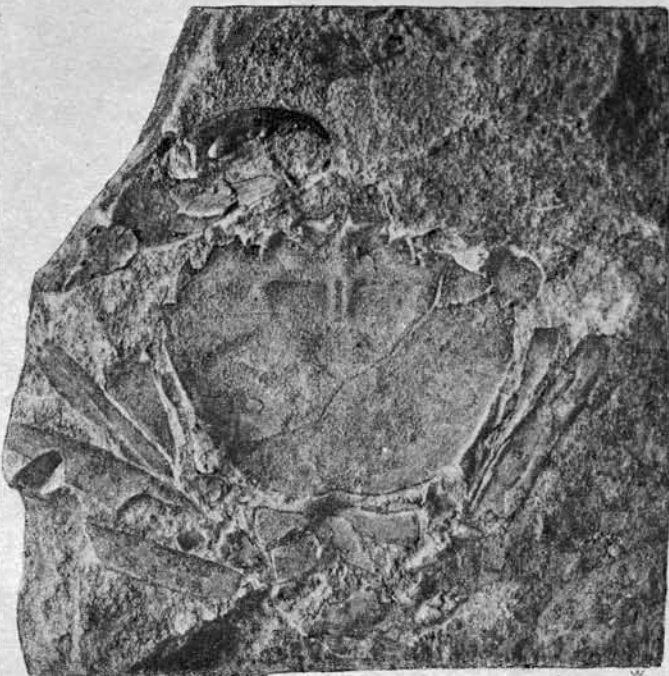
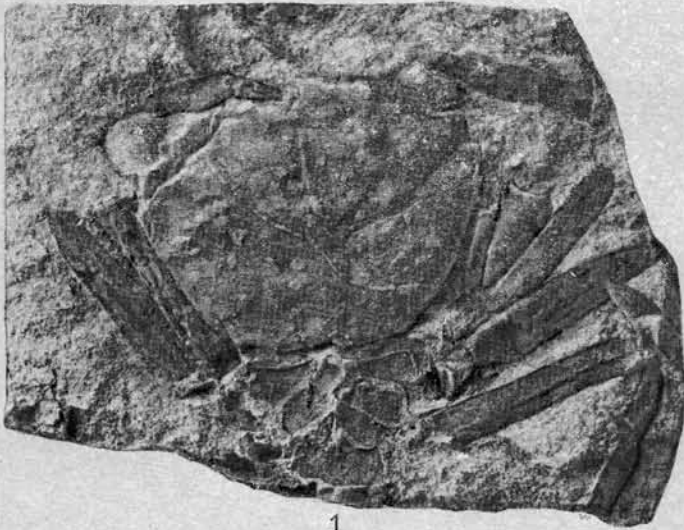
1-4. PŪLUMNOPLAX HANNIBALANUS. (PAGE 39.) 5, 6. ZANTHOPSIS HENDERSONIANUS. (PAGE 53)

FOR EXPLANATION OF PLATE SEE PAGE 142



1-3. *COELOMA MARTINEZENSIS* (PAGE 46.) 4. *LOPHOPANOPEUS OLEARIS*.
(PAGE 57.) 5-8. *PERSEPHONA BIGRANULATA*. (PAGE 78)

FOR EXPLANATION OF PLATE SEE PAGE 142



PILUMNOPLAX SOLEDADENSIS. (PAGE 41)

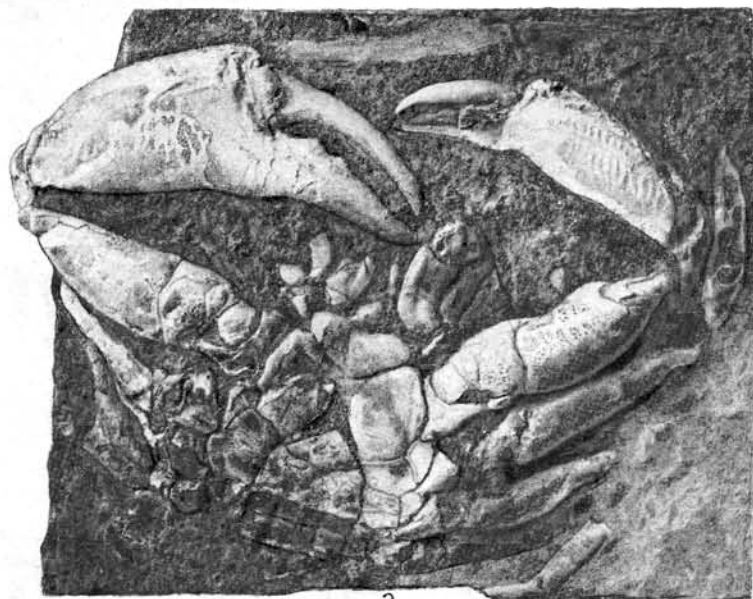
FOR EXPLANATION OF PLATE SEE PAGE 142



1



2



3

ZANTHOPSIS VULGARIS. (PAGE 48)

FOR EXPLANATION OF PLATE SEE PAGE 142

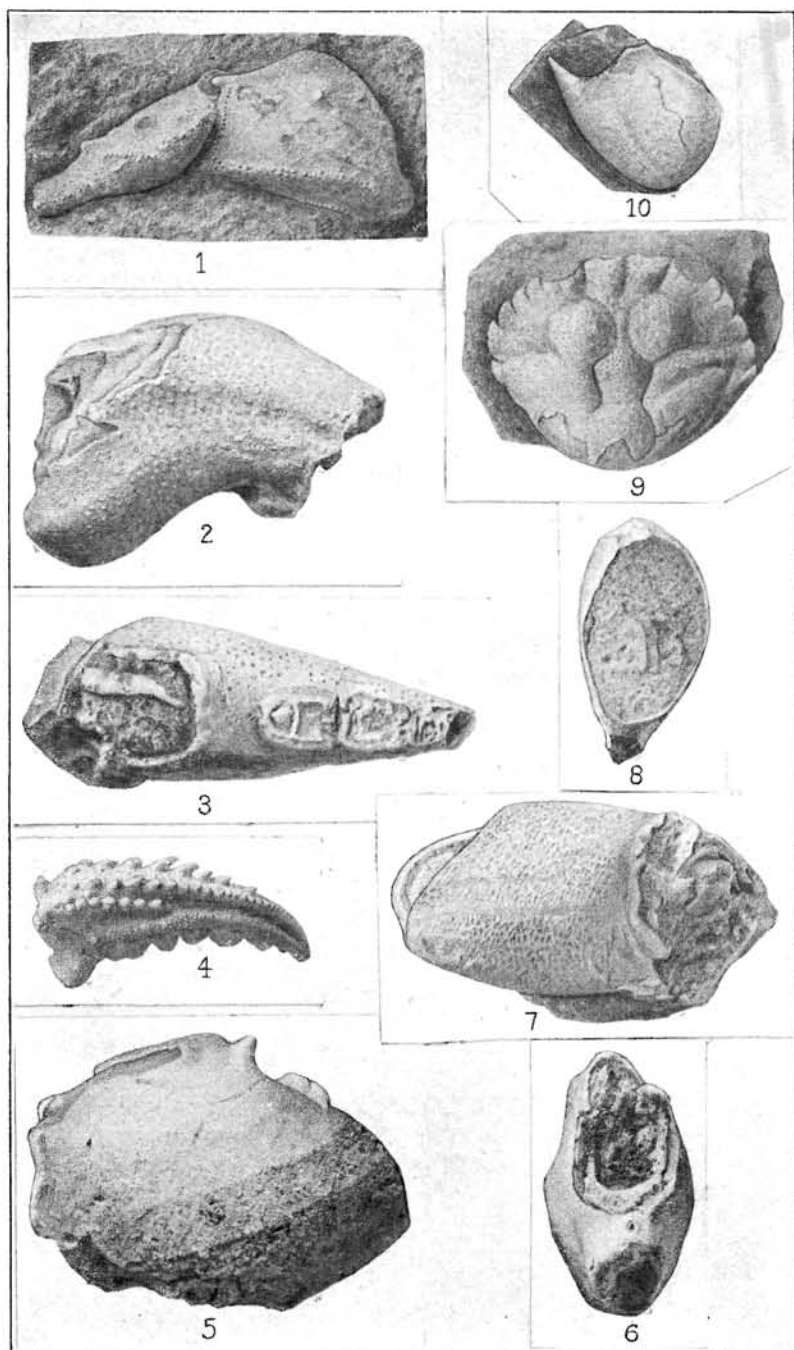


ZANTHOPSIS_VULGARIS. (PAGE 48)
FOR EXPLANATION OF PLATE SEE PAGE 142



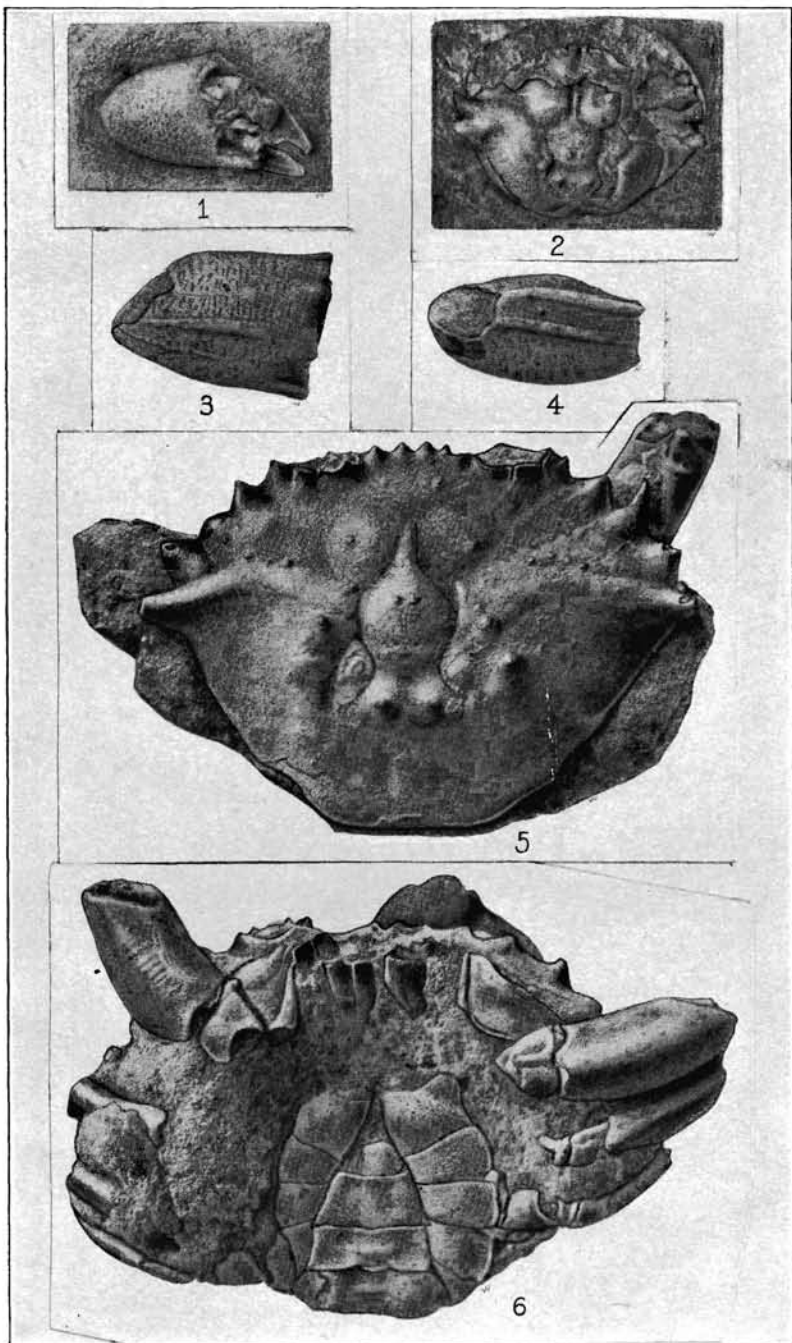
CANCER URBANUS. (PAGE 61)

FOR EXPLANATION OF PLATE SEE PAGE 143



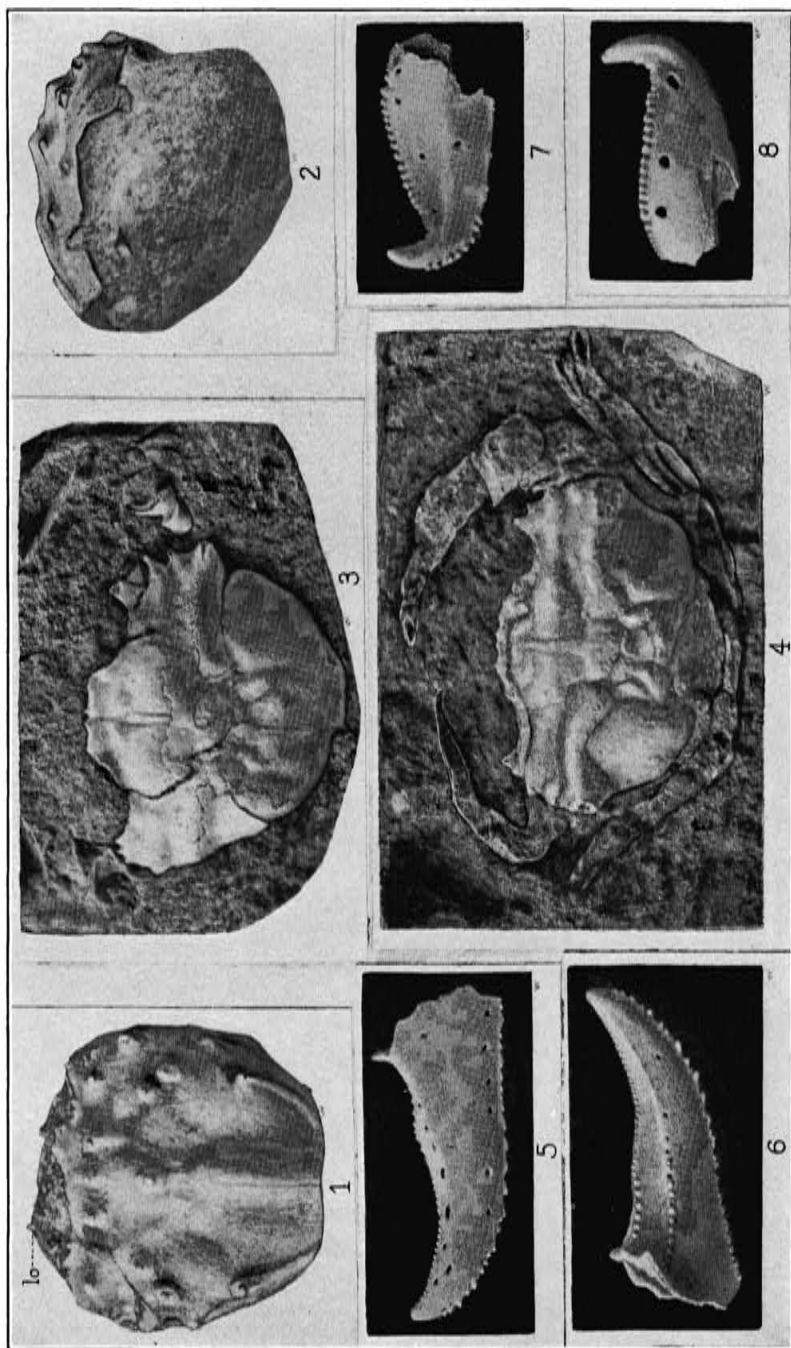
1-8. *CANCER*, SEVERAL SPECIES. (PAGES 59-61, 63.) 9, 10. *CARCINIDES MINOR*. (PAGE 66)

FOR EXPLANATION OF PLATE SEE PAGE 143



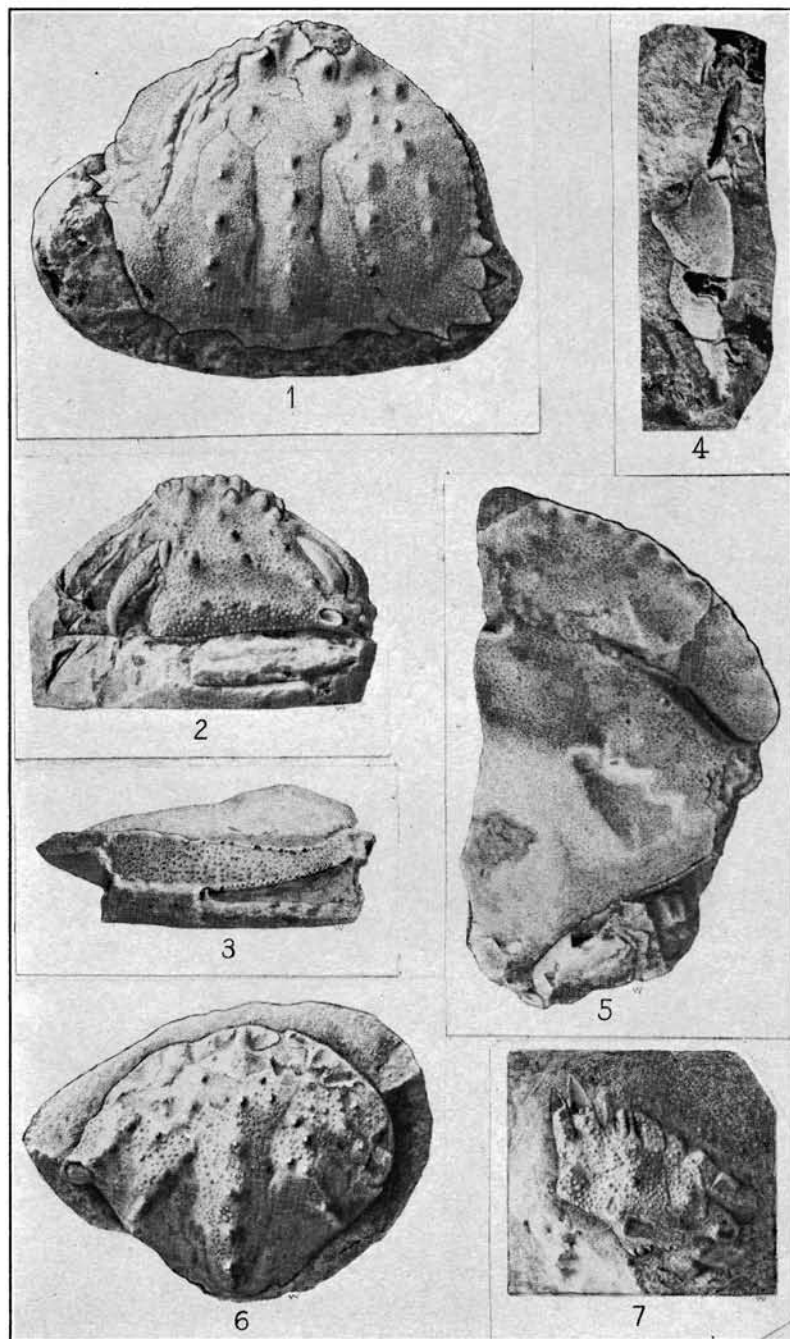
1, 2. *PORTUNITES INSCULPTA*. (PAGE 71.) 3-6. *P. TRIANGULUM*. (PAGE 68)

FOR EXPLANATION OF PLATE SEE PAGE 143



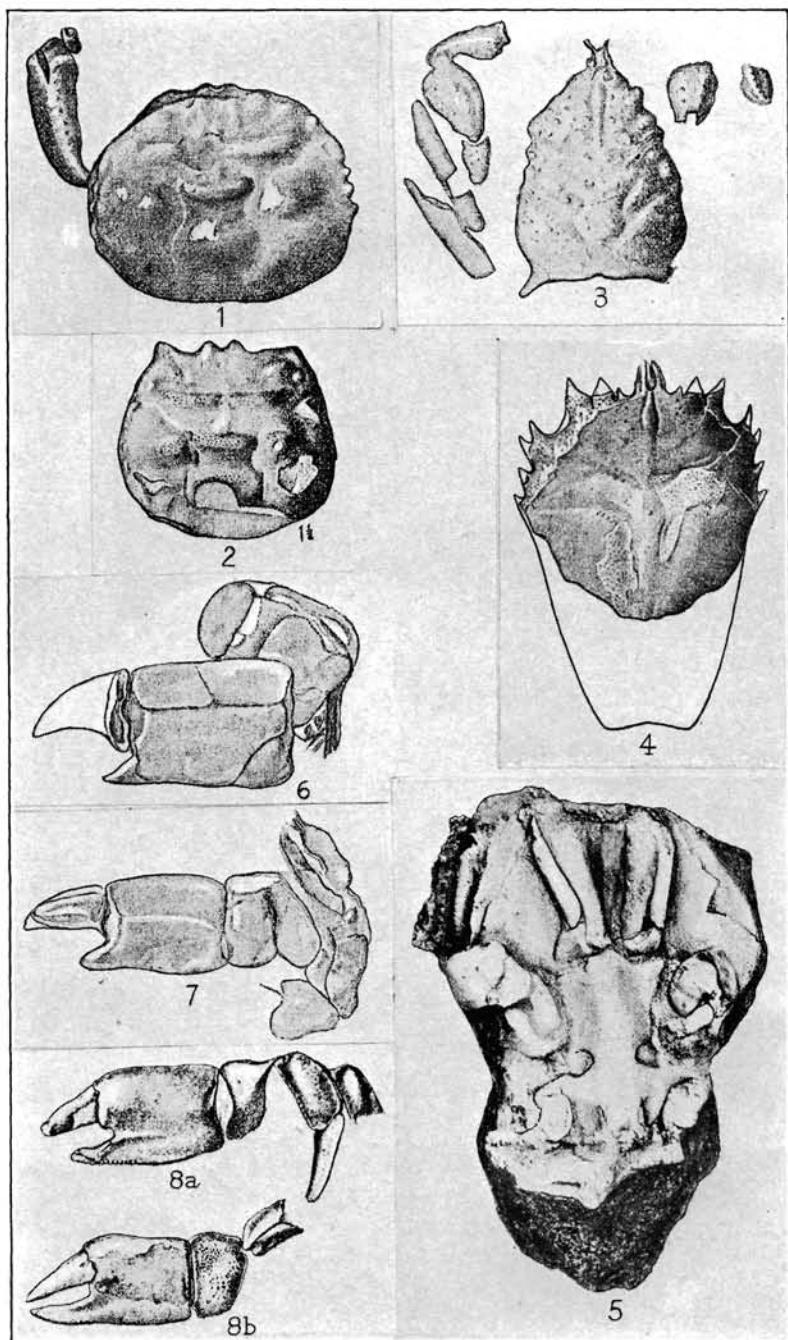
1, 2. NECROCARCINUS HANNAE. (PAGE 84.) 3, 4. PORTUNITES ALASKENSIS. (PAGE 72.) 5-8. CALLIANASSA STEPHENSI. (PAGE 122)

FOR EXPLANATION OF PLATE SEE PAGE 143



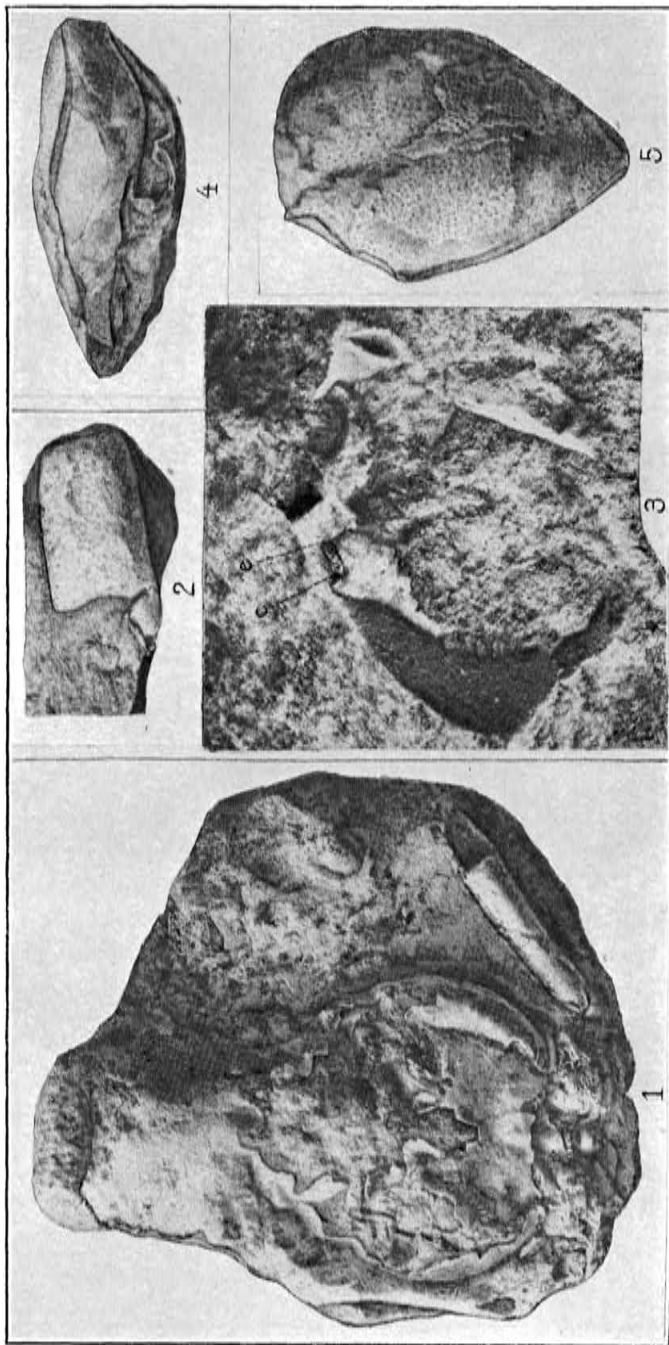
1, 2. *CALAPPA LANENSIS*. (PAGE 79.) 3-5. *MURSA YAQUINENSIS*. (PAGE 81.)
6, 7. *M. MARCUSANA*. (PAGE 82)

FOR EXPLANATION OF PLATE SEE PAGE 143



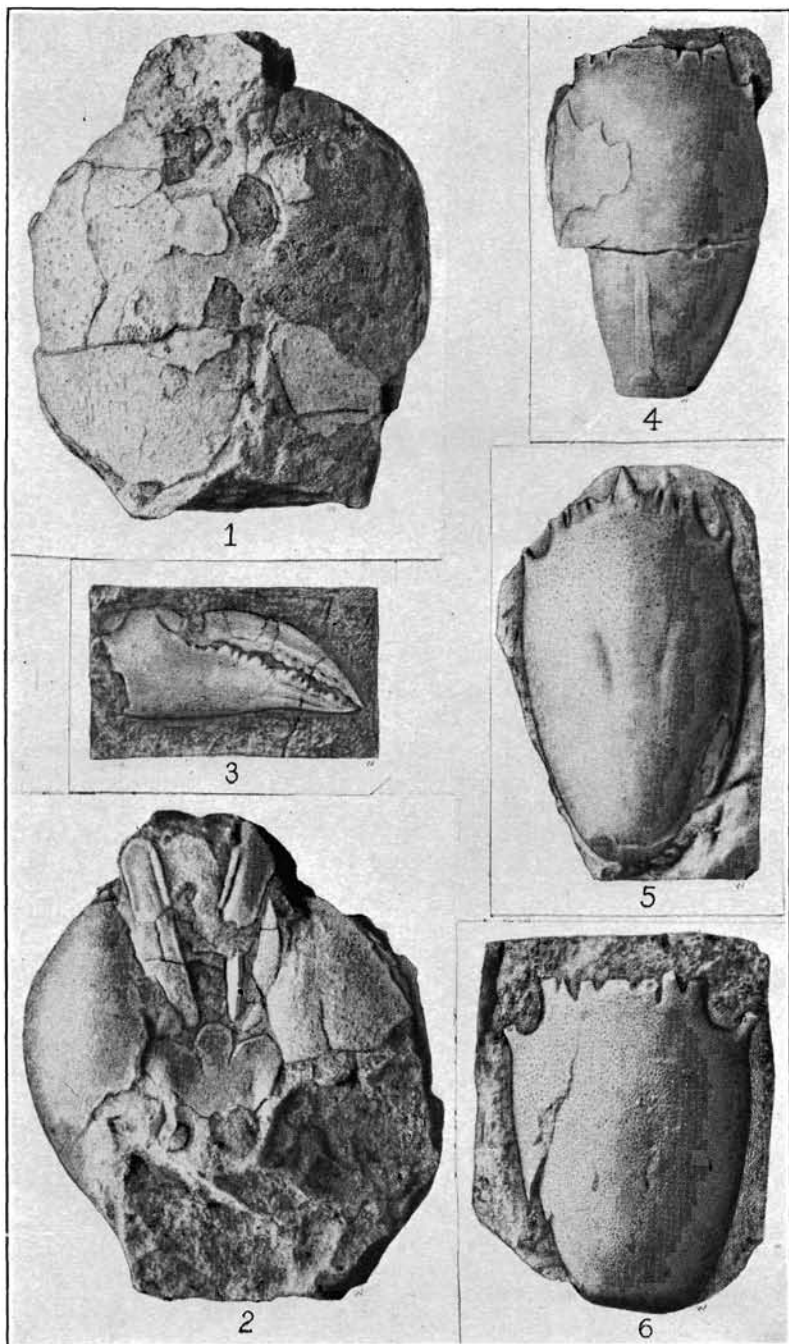
1, 2. *PLAGIOLOPHUS*. (PAGE 37.) 3. *HOMOLOPSIS*. (PAGE 86.) 4. *PALAEOCORYSTES*. (PAGE 101.) 5. *RANINOIDES*. (PAGE 94.) 6-8. *CALLIANASSA*. (PAGE 107)

FOR EXPLANATION OF PLATE SEE PAGE 144



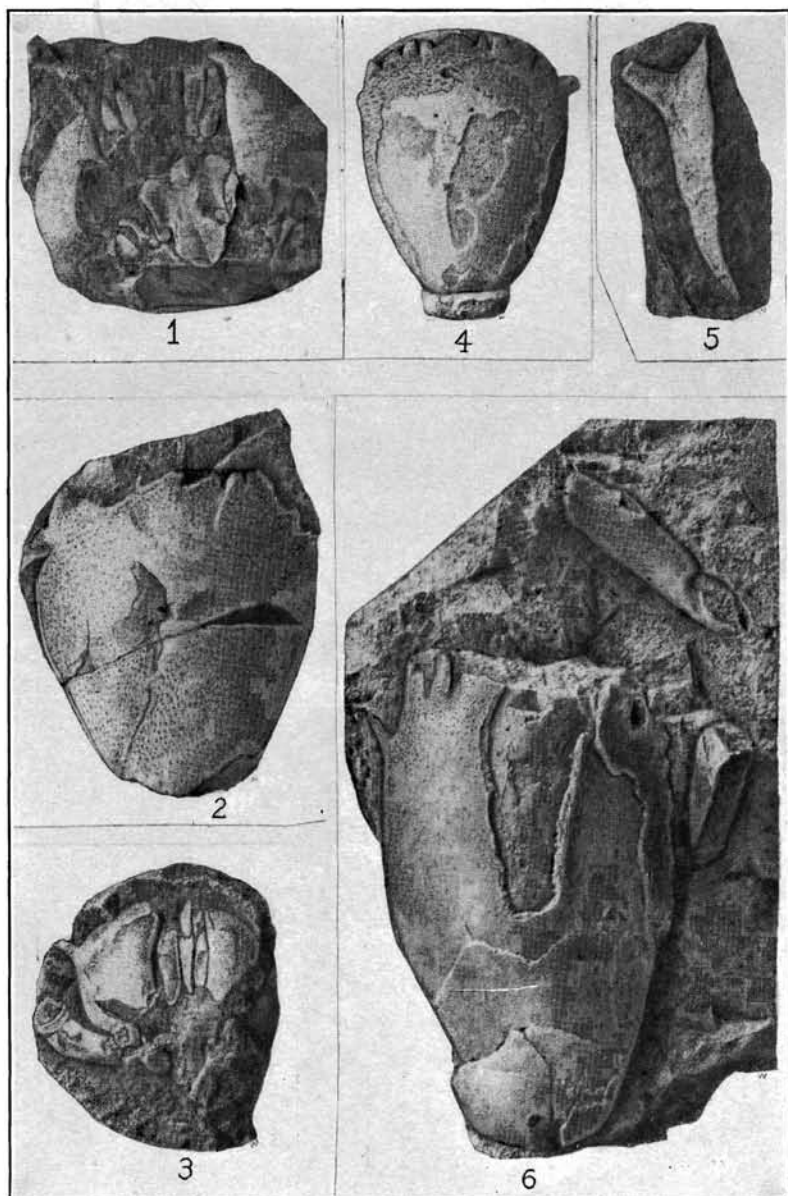
1, 2. PALEHOMOLA GORRELLI. (PAGE 86.) 3. GRAPTOCARCINUS. (PAGE 88.) 4, 5. RANIDINA WILLAPENSIS. (PAGE 99)

FOR EXPLANATION OF PLATE SEE PAGE 144



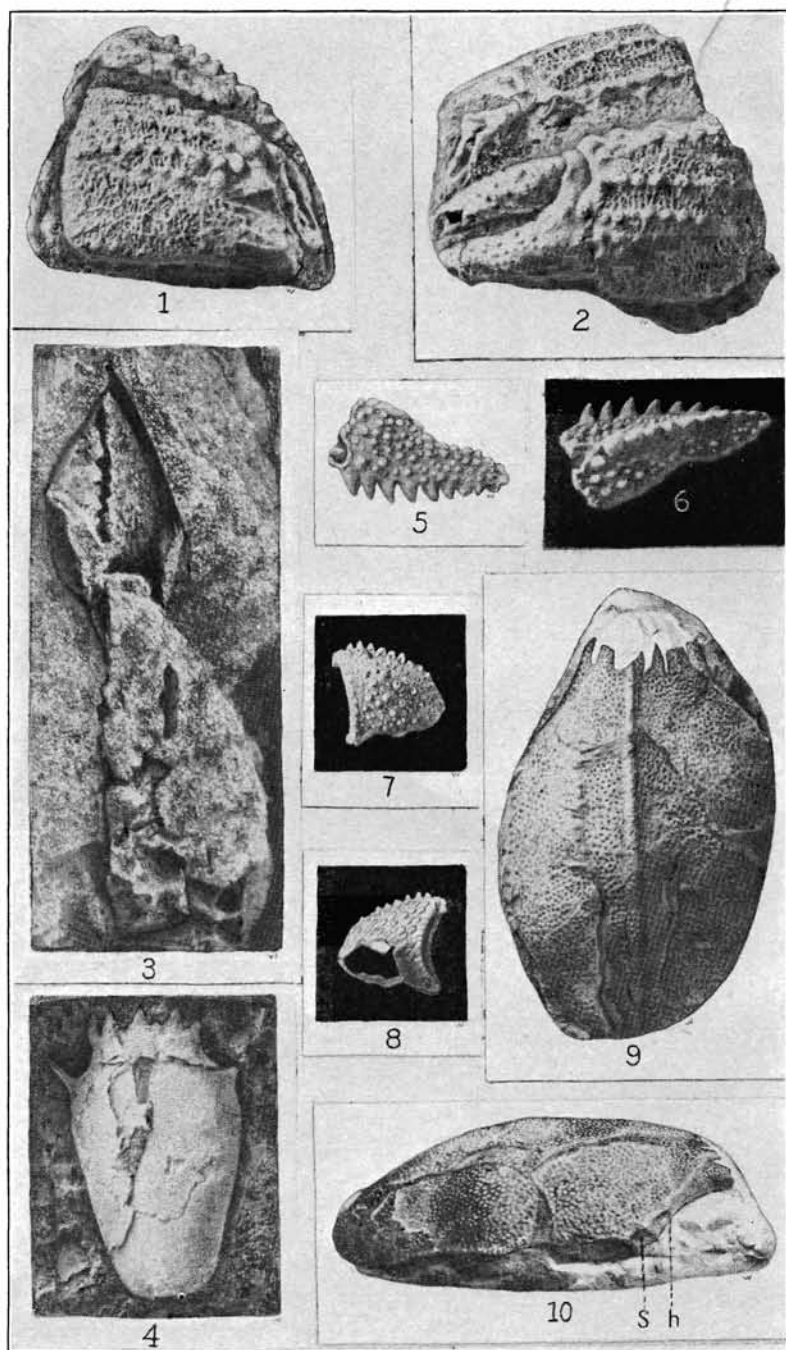
1, 2. *RANINA TEJONIANA*. (PAGE 90.) 3. *PORTUNITES ALASKENSIS*. (PAGE 72.)
4-6. *RANINOIDES*. THREE SPECIES. (PAGES 93-95)

FOR EXPLANATION OF PLATE SEE PAGE 144



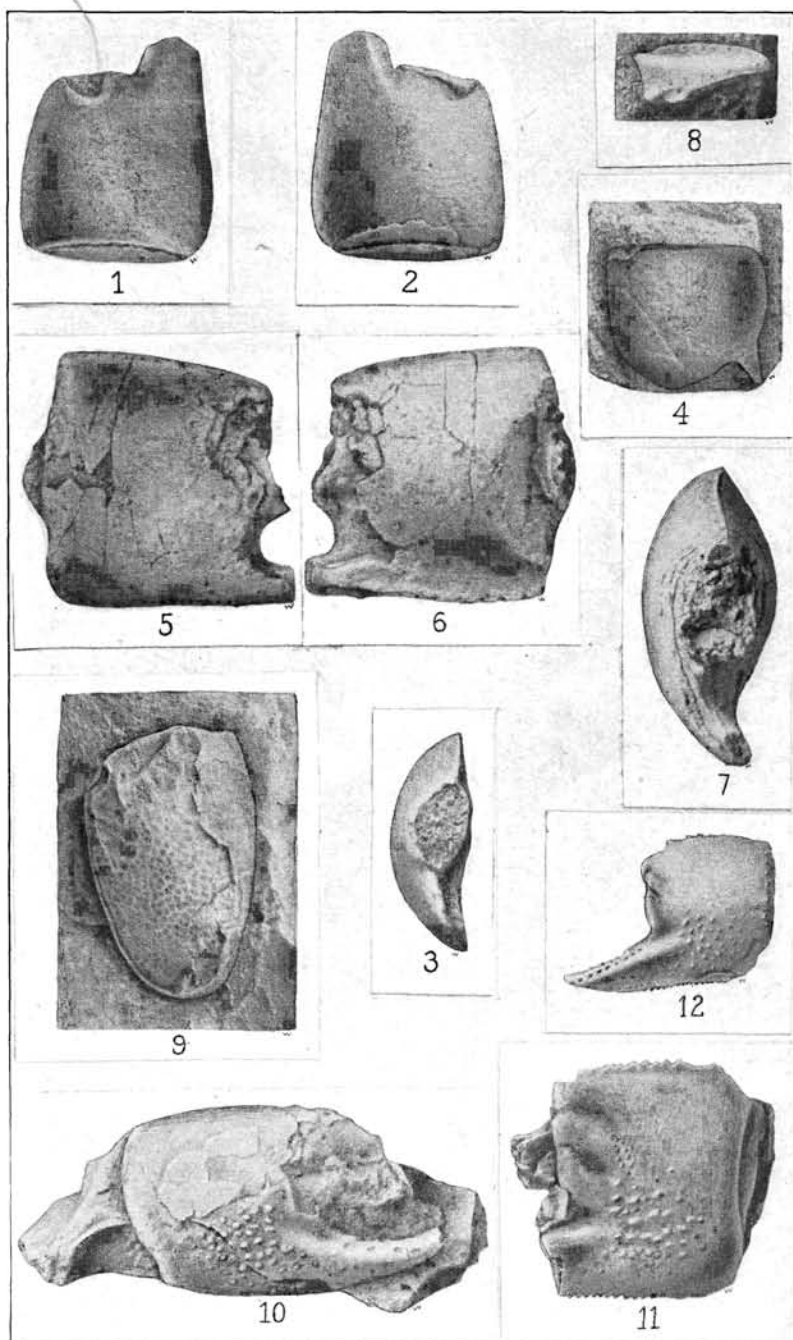
1-4. *RANINA AMERICANA*. (PAGE 91.) 5. *RANINOIDES ASPER*. (PAGE 98.)
6. *R. FULGIDUS*. (PAGE 96)

FOR EXPLANATION OF PLATE SEE PAGE 144



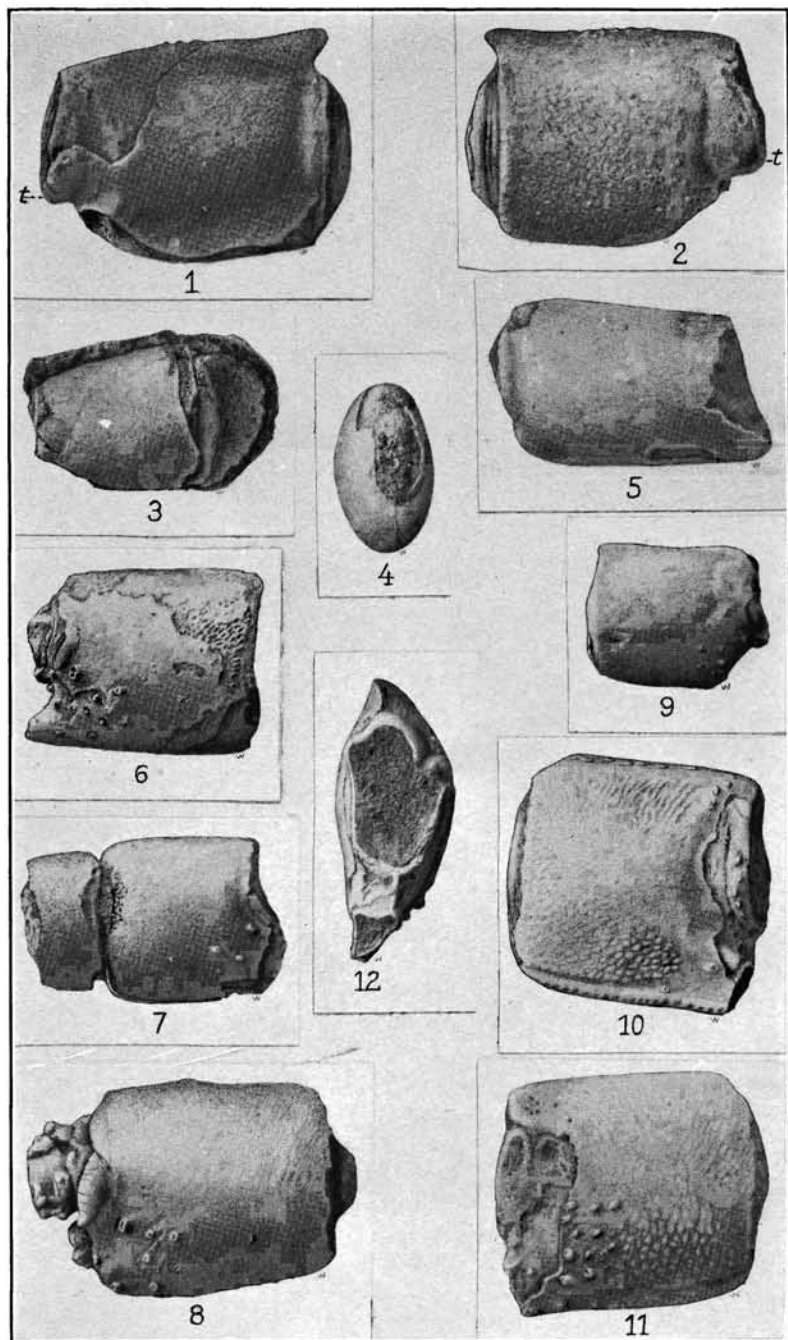
1, 2, 5-8. DARDANUS, TWO SPECIES. (PAGES 102, 103.) 3. P₃GURISTES.
 (PAGE 102.) 4. RANINOIDES. (PAGE 96.) 9, 10. EUMORPHOCORYSTES.
 (PAGE 100)

FOR EXPLANATION OF PLATE SEE PAGE 144



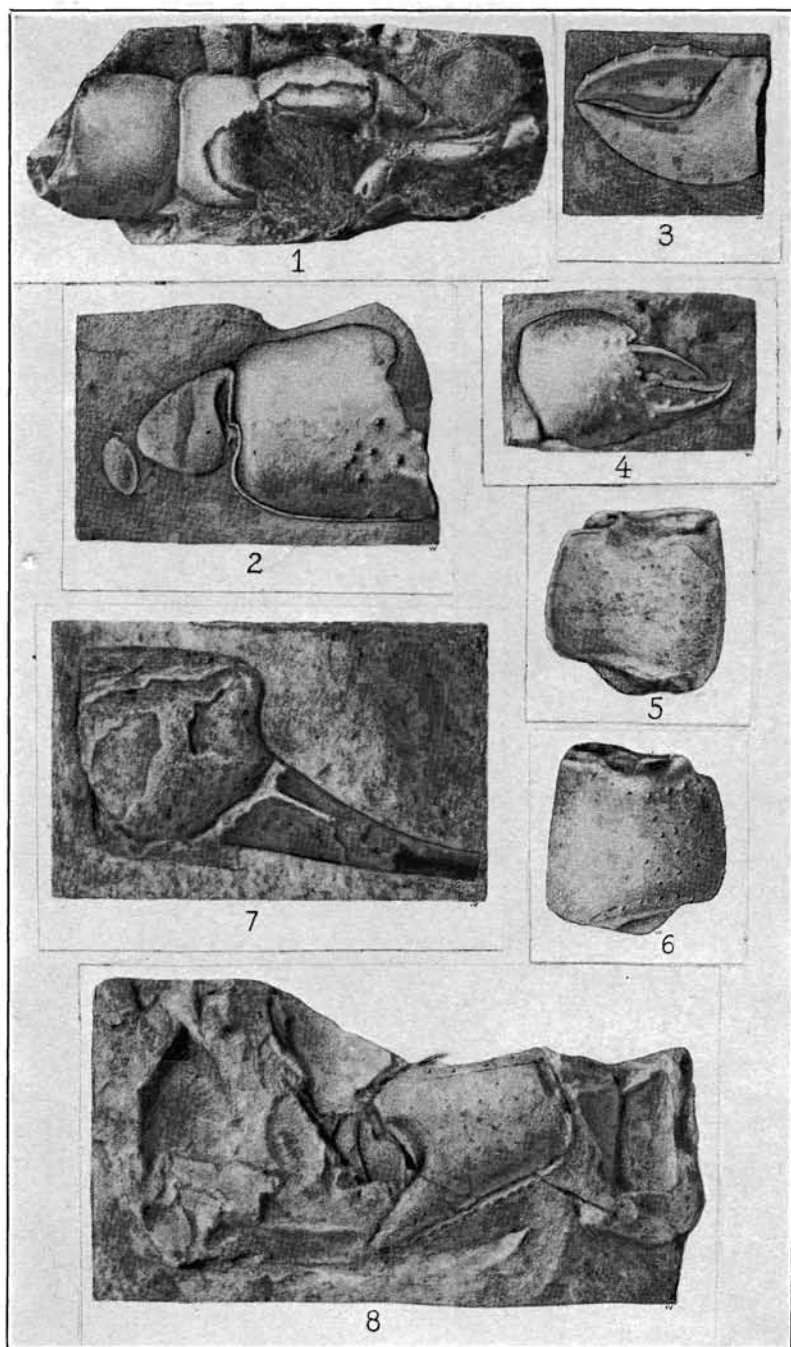
1-4. *CALLIANASSA* INCERTA. (PAGE 108.) 5-7. *C. KEWANA*. (PAGE 109.)
8-12. *C. UMPQUAENSIS*. (PAGE 110)

FOR EXPLANATION OF PLATE SEE PAGE 145



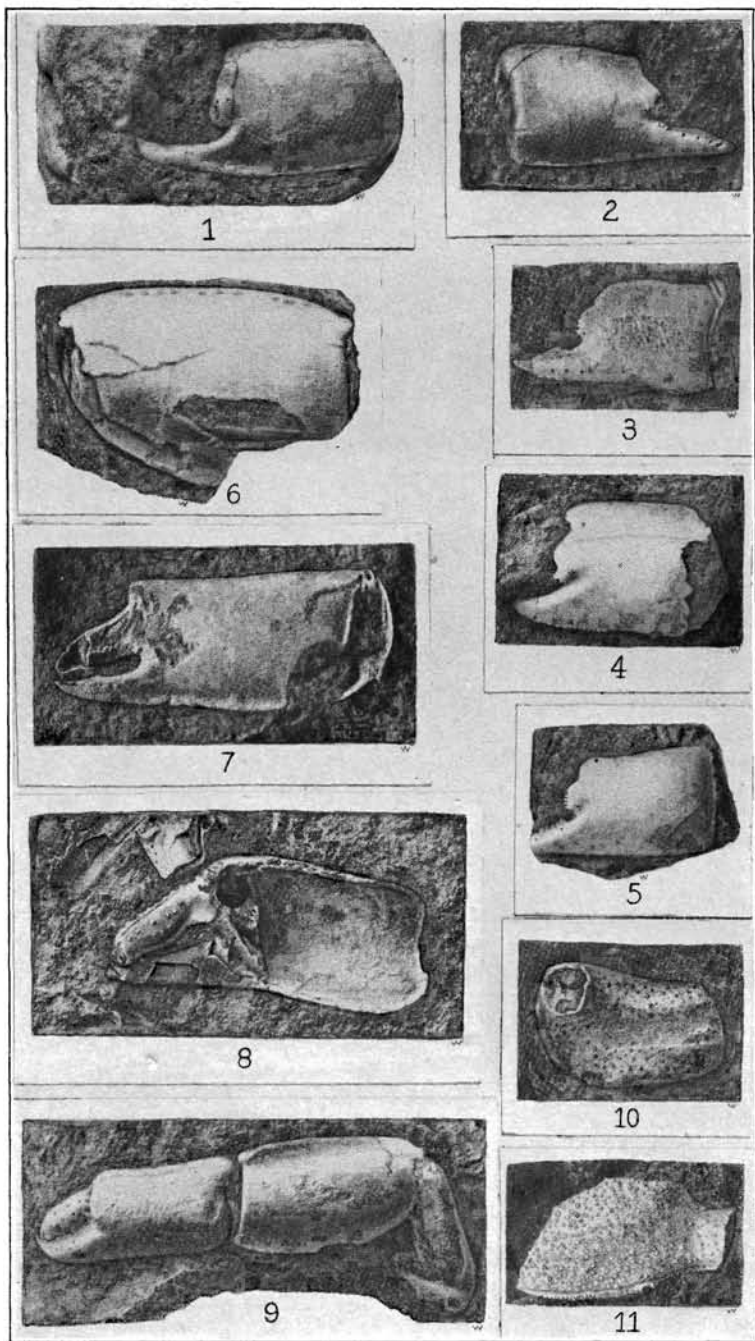
1-3. *CALLIANASSA COWLITZENSIS*. (PAGE 113.) 4, 5. *C. FRESNOENSIS*. (PAGE 109.) 6-12. *C. CLALLAMENSIS*. (PAGE 114)

FOR EXPLANATION OF PLATE SEE PAGE 145



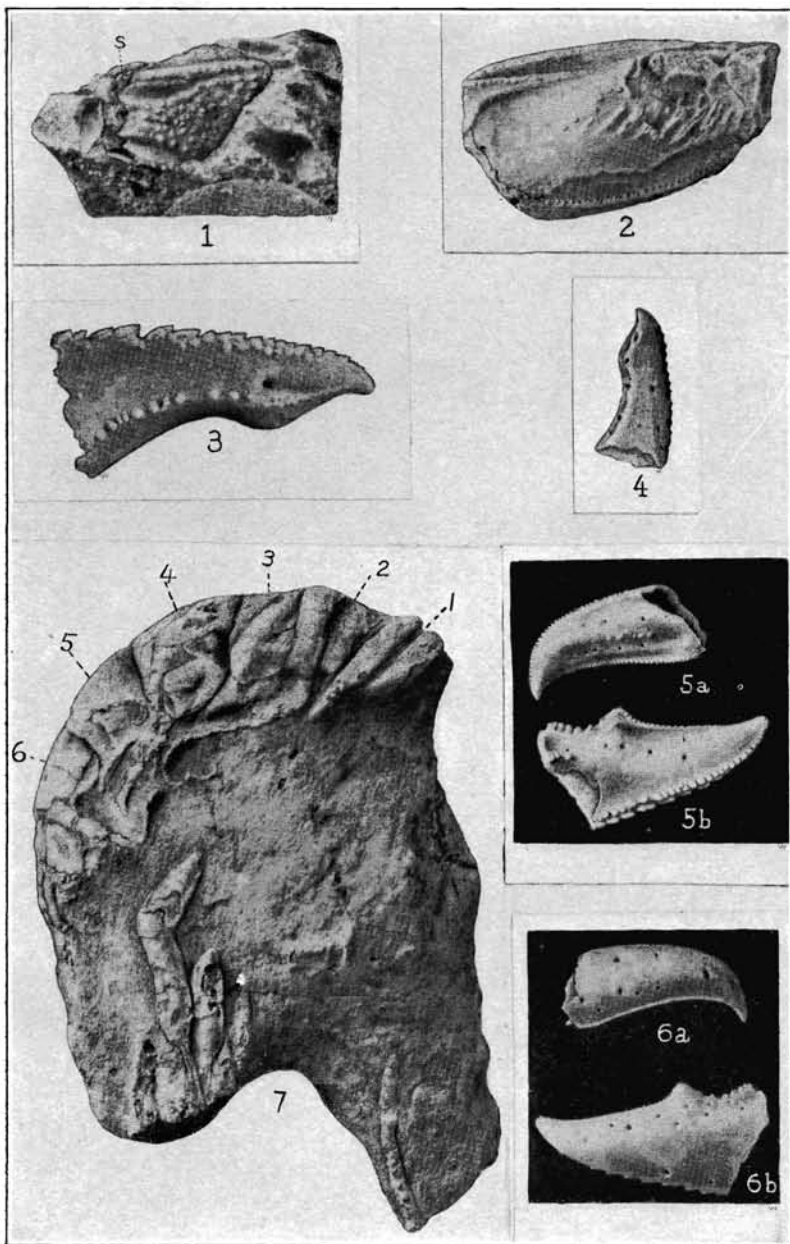
1-4. *CALLIANASSA TWINENSIS*. (PAGE 115.) 5-8. *C. BANDONENSIS*. (PAGE 118)

FOR EXPLANATION OF PLATE SEE PAGE 145



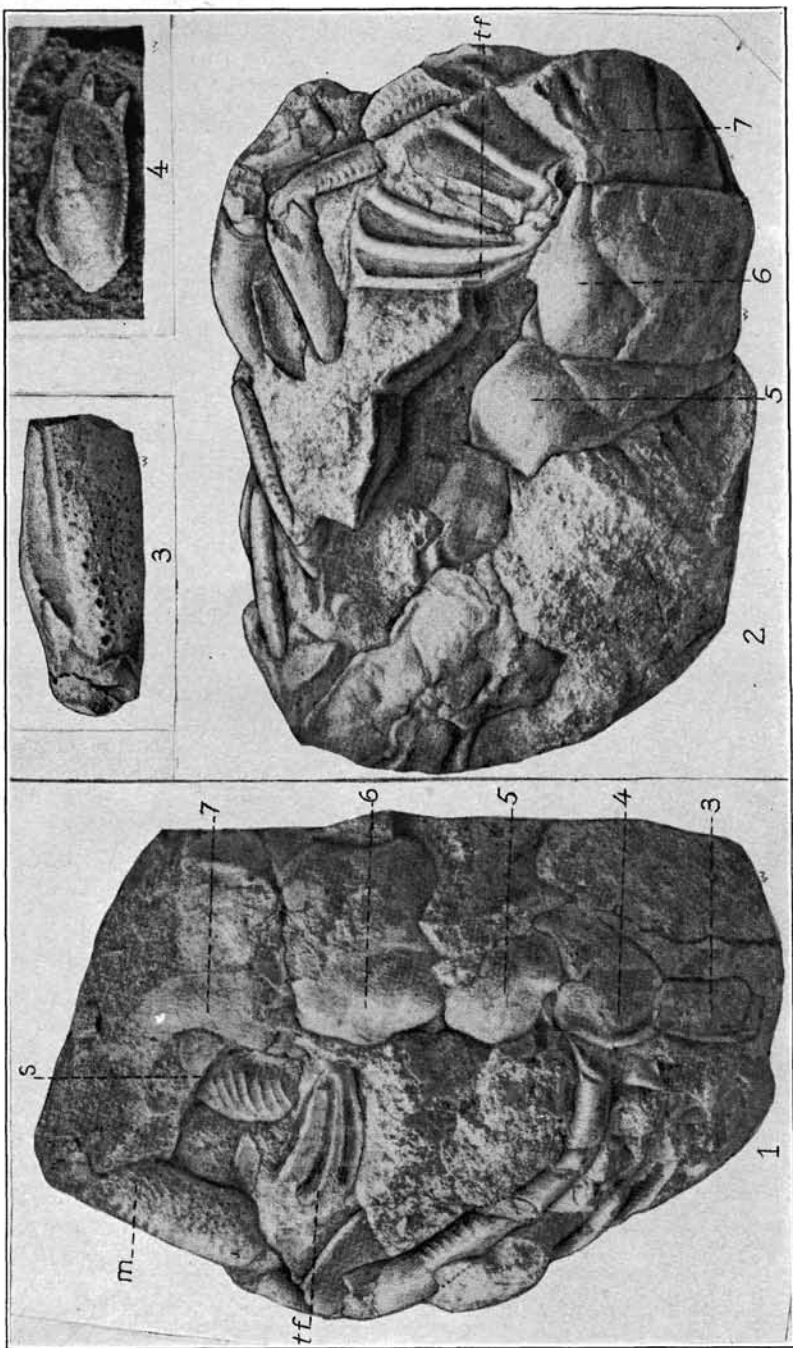
1-5. *CALLIANASSA PORTERENSIS*. (PAGE 119.) 6-9. *C. OREGONENSIS*. (PAGE 121.)
10, 11. *BLEPHARIPODA BRUCEI*. (PAGE 126)

FOR EXPLANATION OF PLATE SEE PAGES 145 AND 146



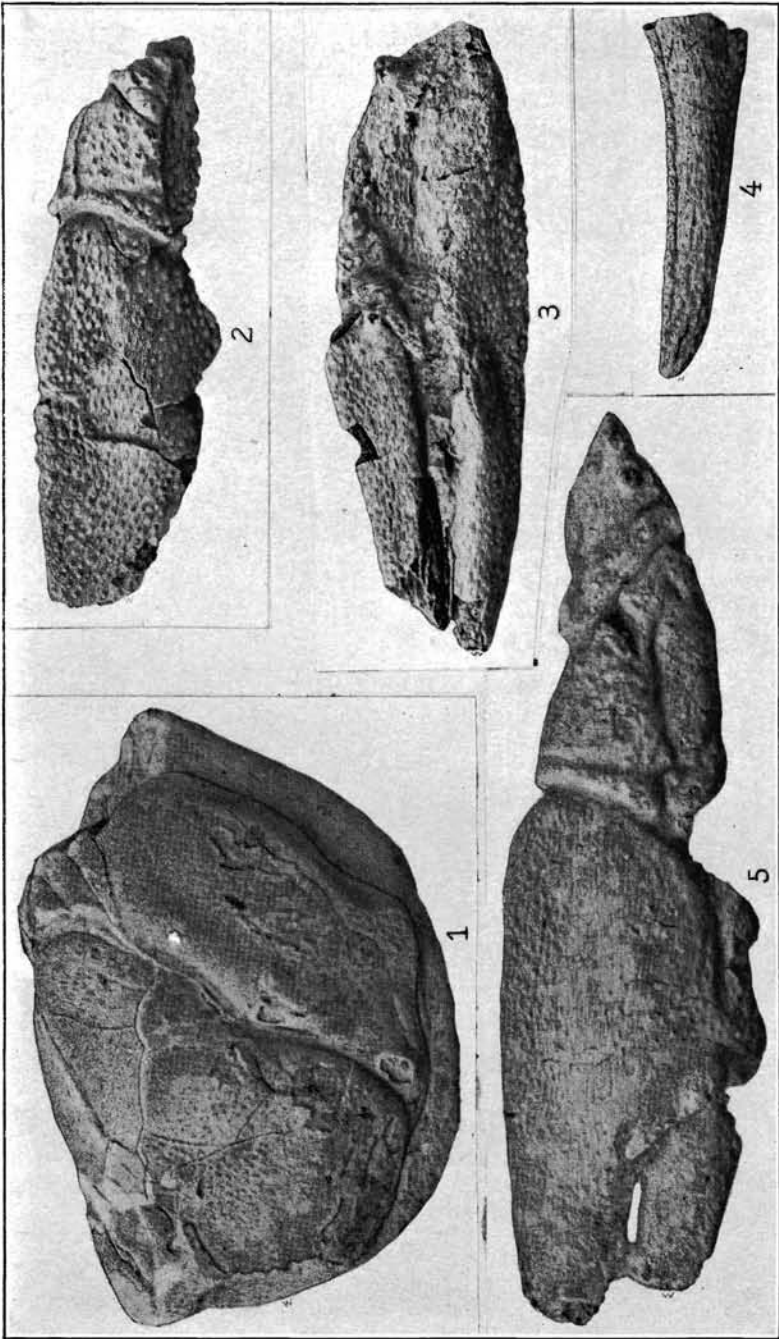
1, 2. *UROGEBIA EOCENICA*. (PAGE 124.) 3-6. *CALLIANASSA LONGIMANA*. (PAGE 122.) 7. *ASTACUS CHENODERMA*. (PAGE 130)

FOR EXPLANATION OF PLATE SEE PAGE 146



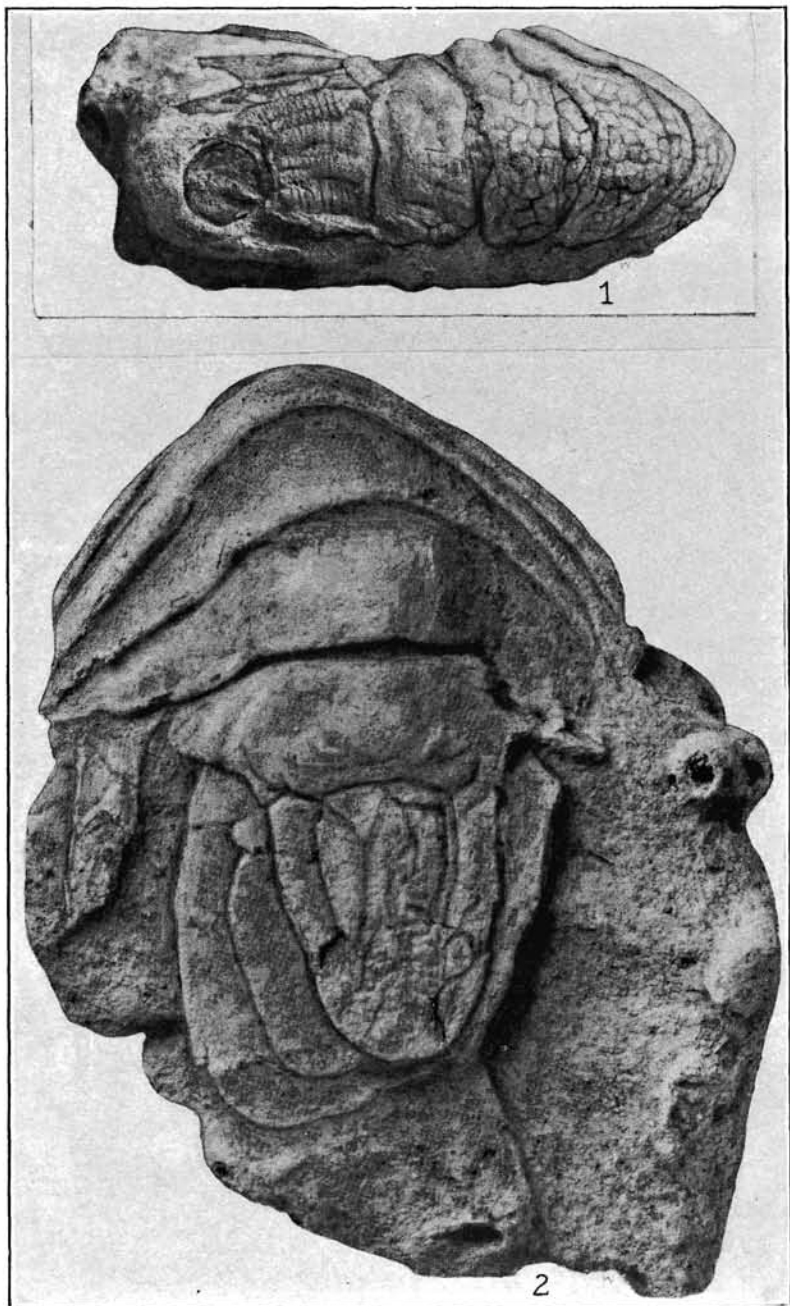
UROGEBIA EOGENICA. (PAGE 124)

FOR EXPLANATION OF PLATE SEE PAGE 148



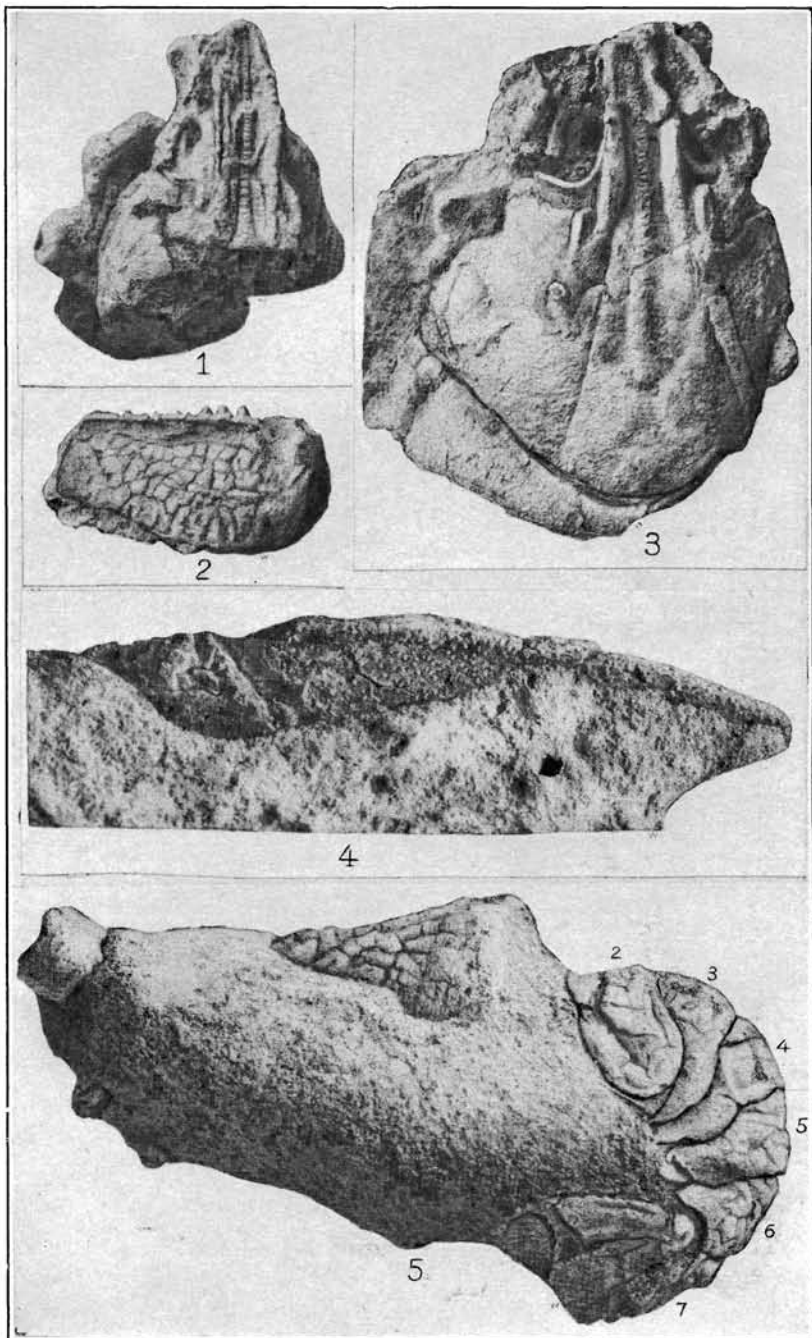
ASTACUS CHENERDERMA. (PAGE 130)

FOR EXPLANATION OF PLATE SEE PAGE 146

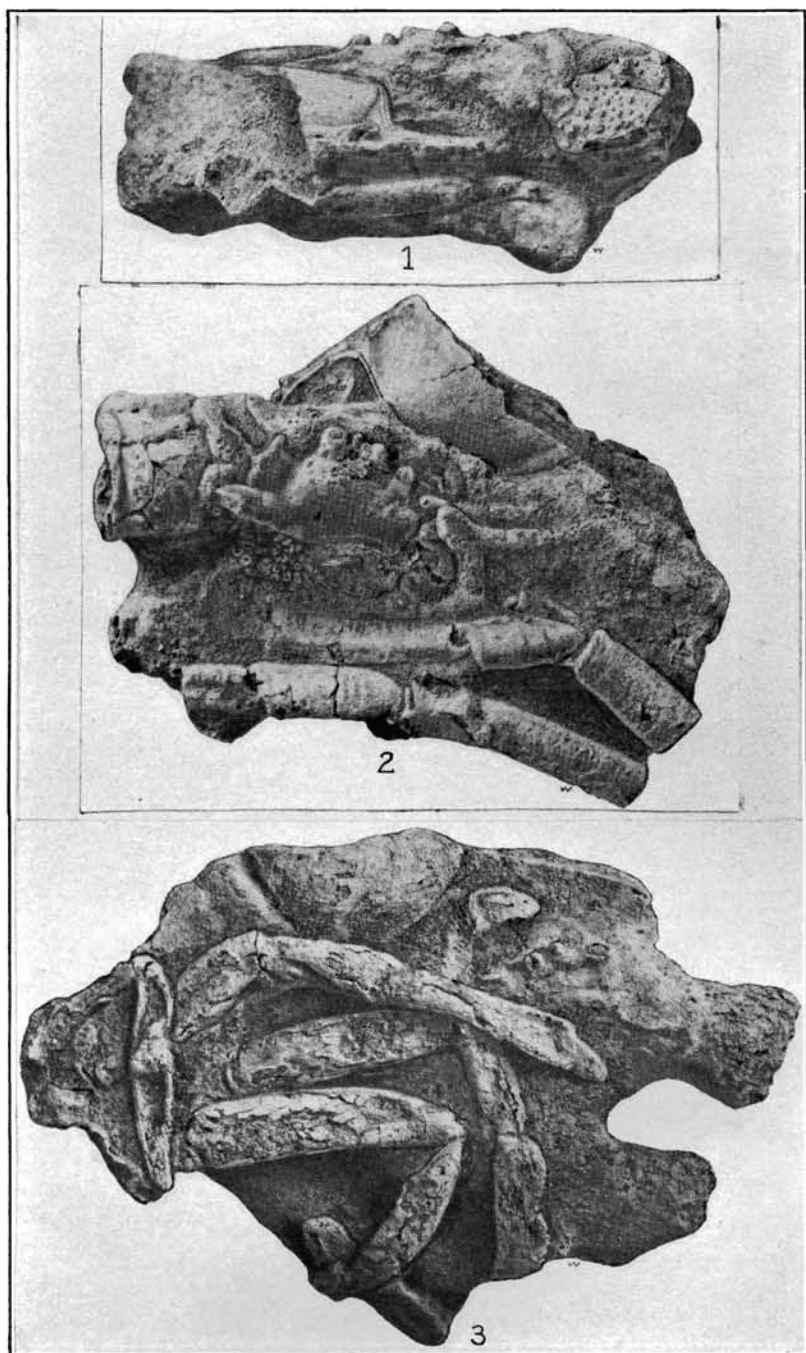


ASTACUS CHENODERMA. (PAGE 130)

FOR EXPLANATION OF PLATE SEE PAGE 146

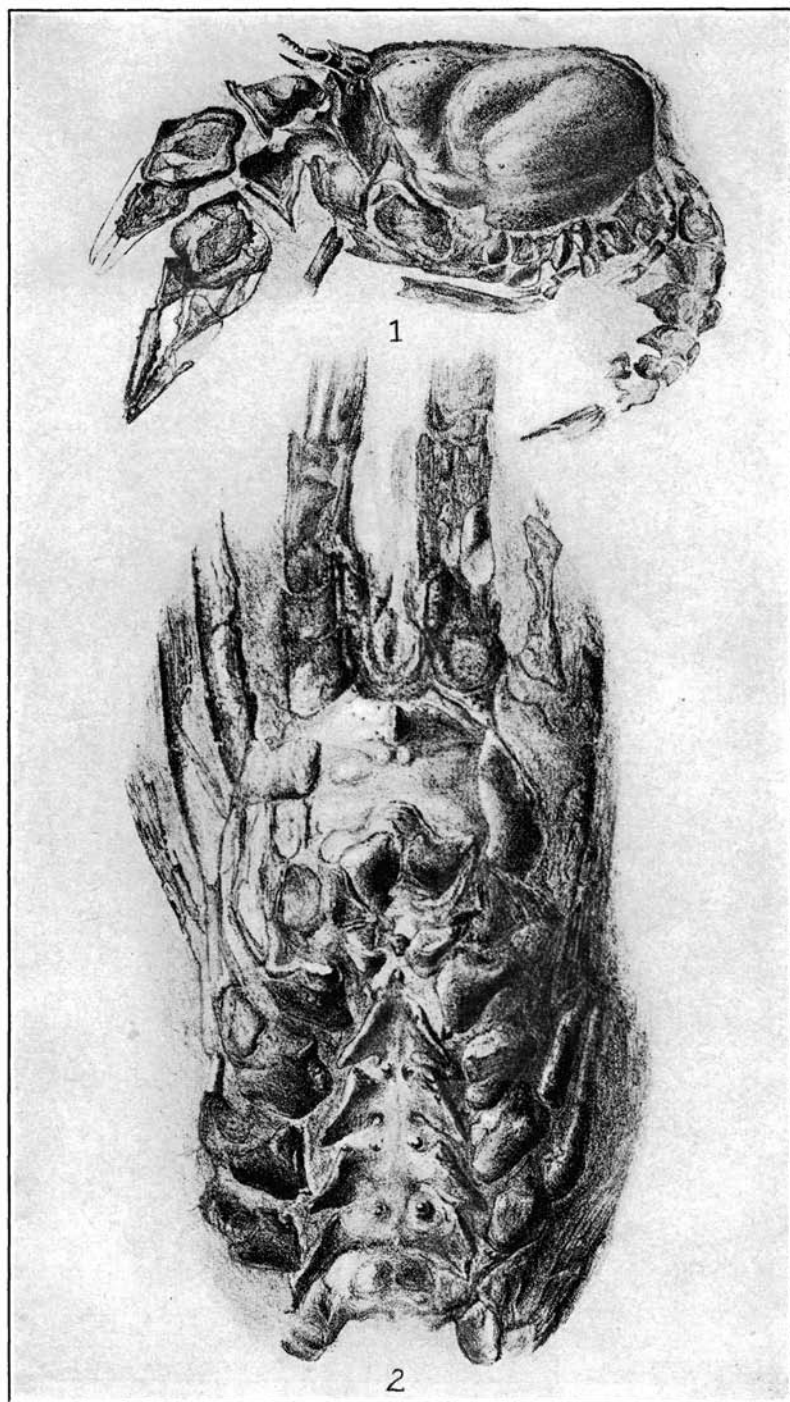


ASTACUS CHENODERMA. (PAGE 130)



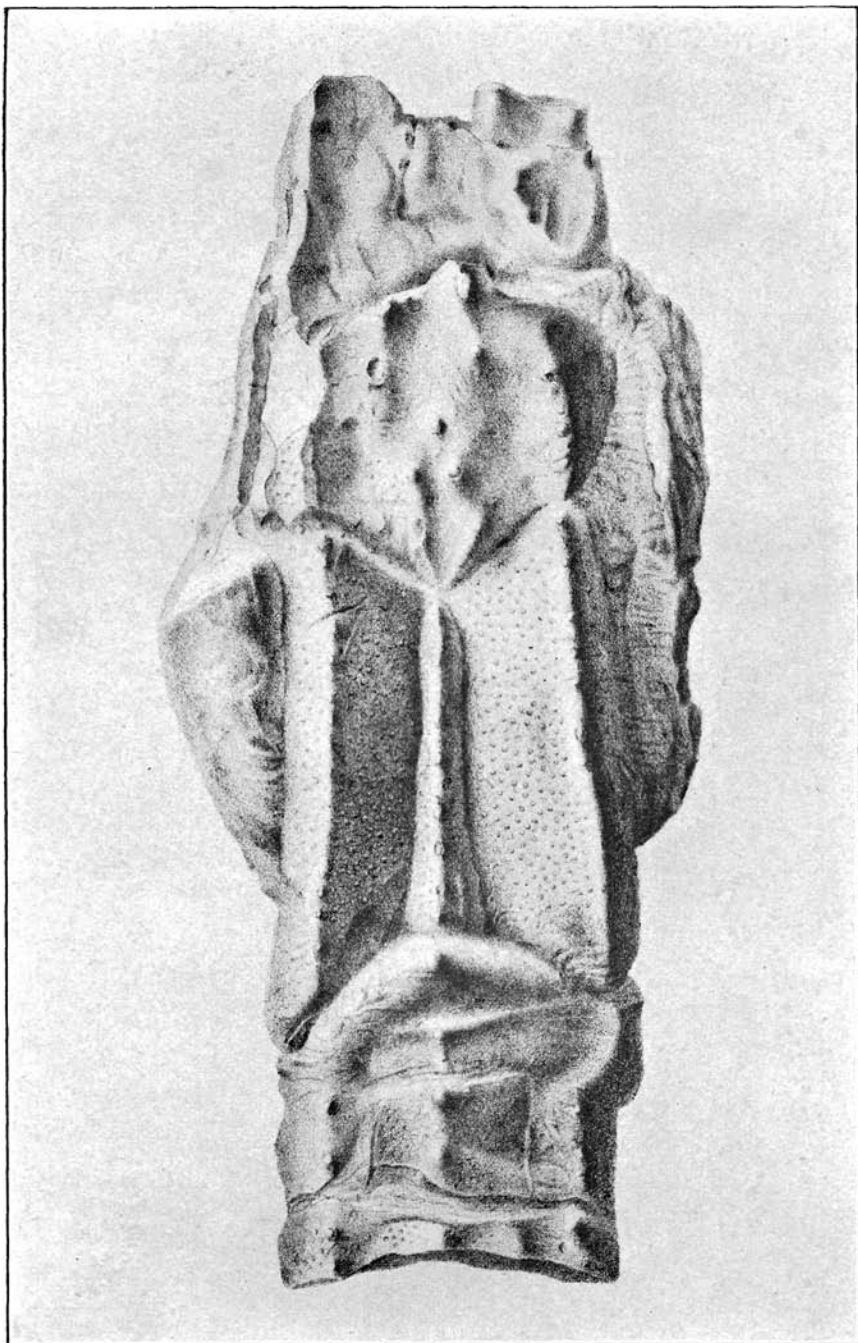
ASTACUS CHENODERMA. (PAGE 130)

FOR EXPLANATION OF PLATE SEE PAGE 147



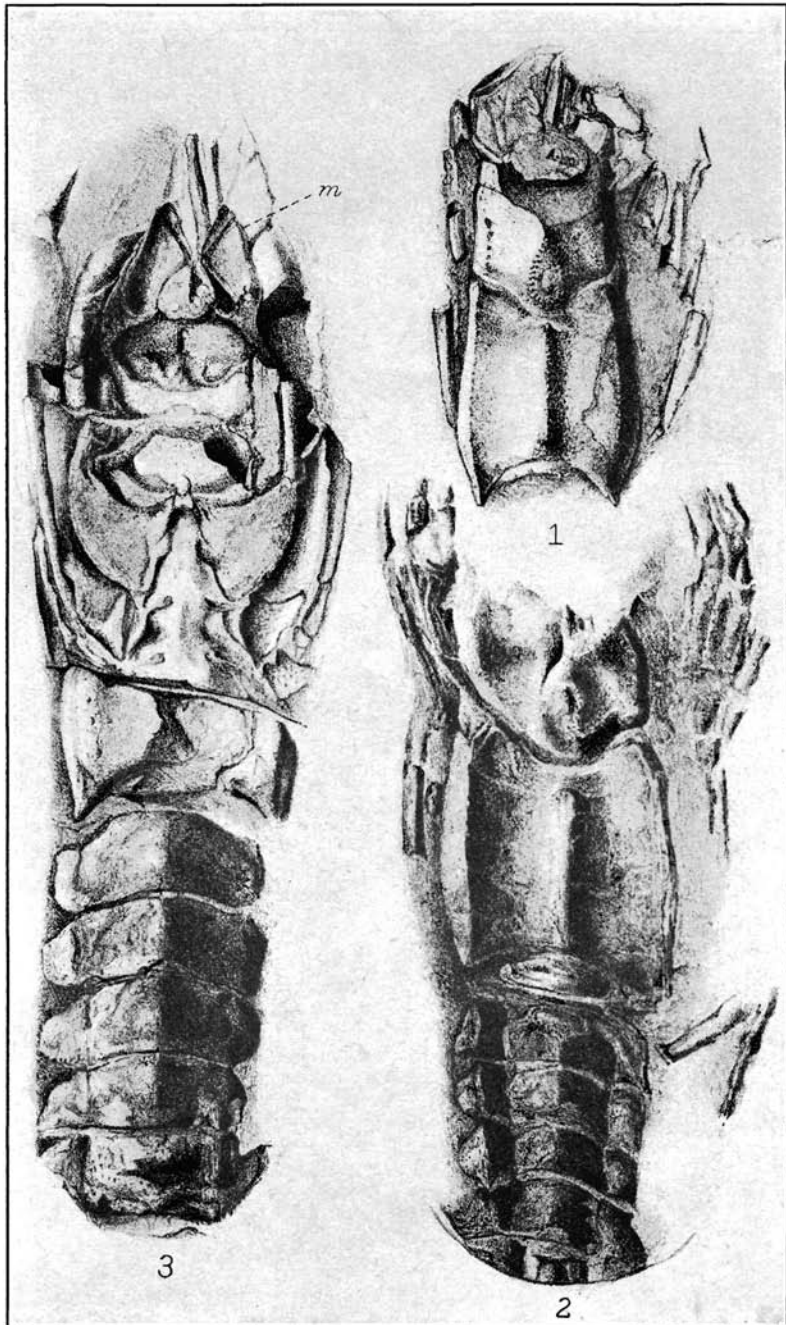
1. *ERYMA DAWSONI*. (PAGE 128.) 2. *PODOCRATUS CANADENSIS*. (PAGE 134)

FOR EXPLANATION OF PLATE SEE PAGE 147



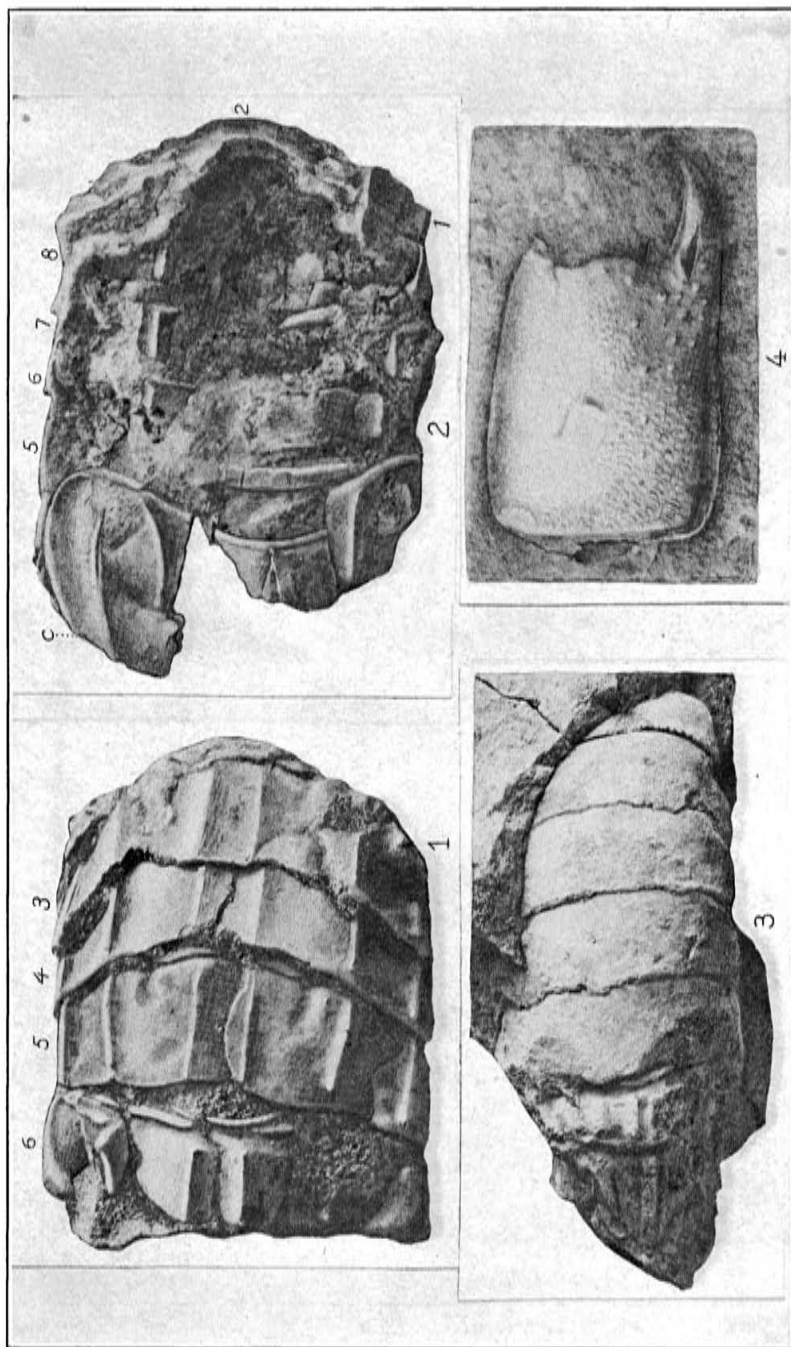
PODOCRATUS CANADENSIS. (PAGE 134)

FOR EXPLANATION OF PLATE SEE PAGE 147



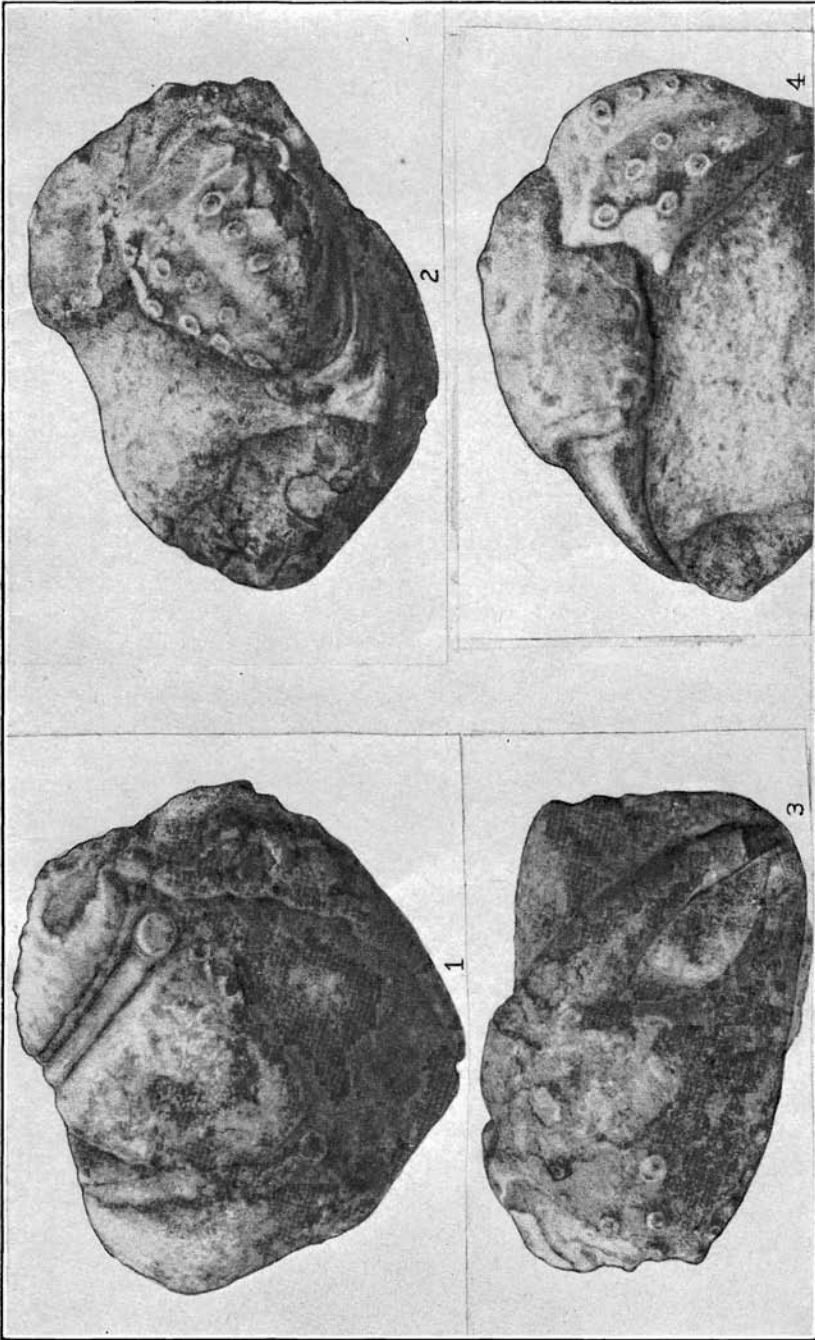
PODOCRATUS VANCOUVERENSIS. (PAGE 135)

FOR EXPLANATION OF PLATE SEE PAGE 147



1, 2. *CHLORIDELLA SONOMANA*. (PAGE 136.) 3. *PSEUDOSQUILLA ADELAIDENSIS*. (PAGE 137.) 4. *CALLIANASSA KNAPPTONENSIS*. (PAGE 112)

FOR EXPLANATION OF PLATE SEE PAGE 147



ZANTHOPSIS STERNBERGI. (PAGE 54)

FOR EXPLANATION OF PLATE SEE PAGE 147