

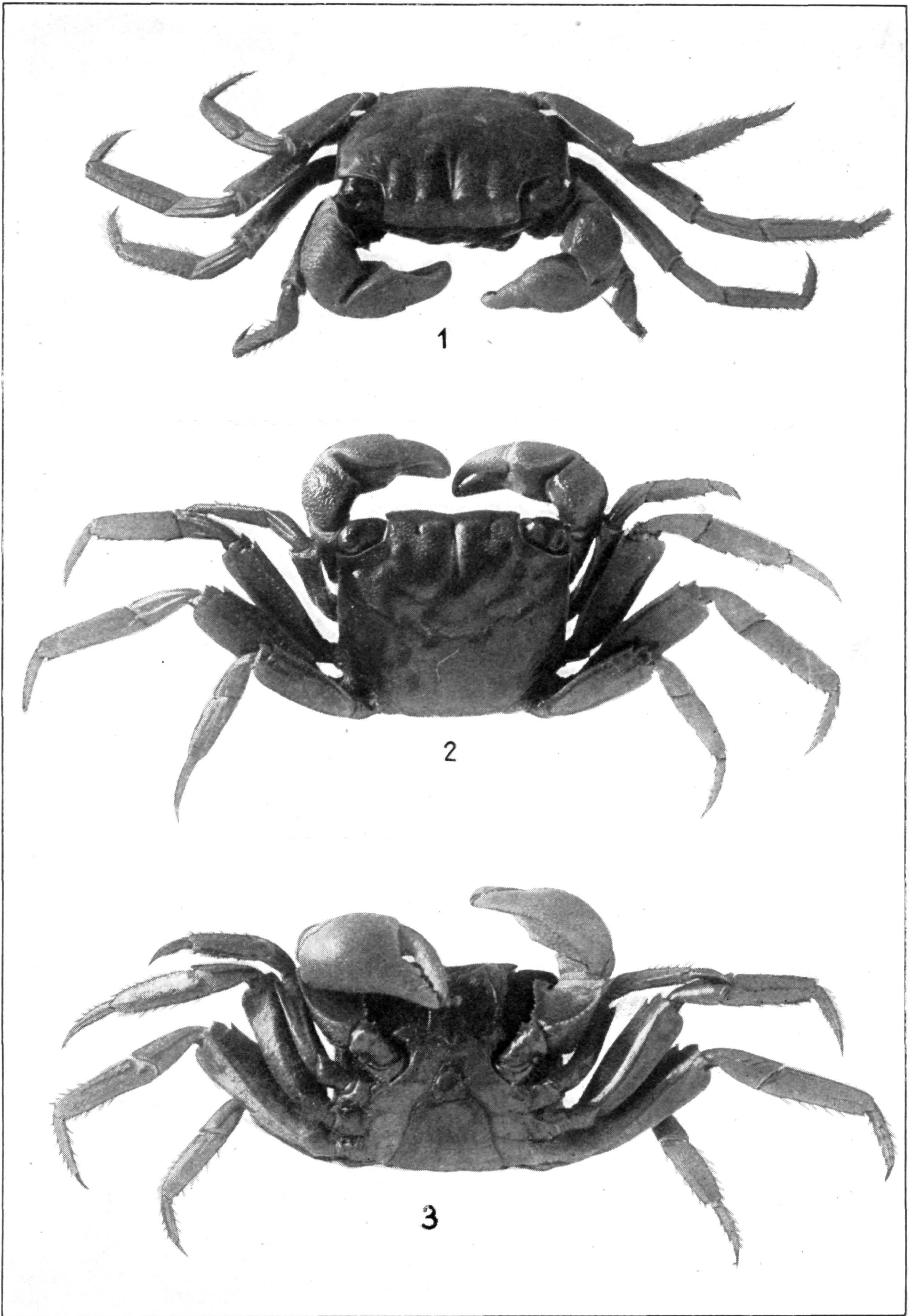
SESARMA (SESARMA) JARVISI. (PAGE 296.)

FOR EXPLANATION OF PLATE SEE PAGE 436.



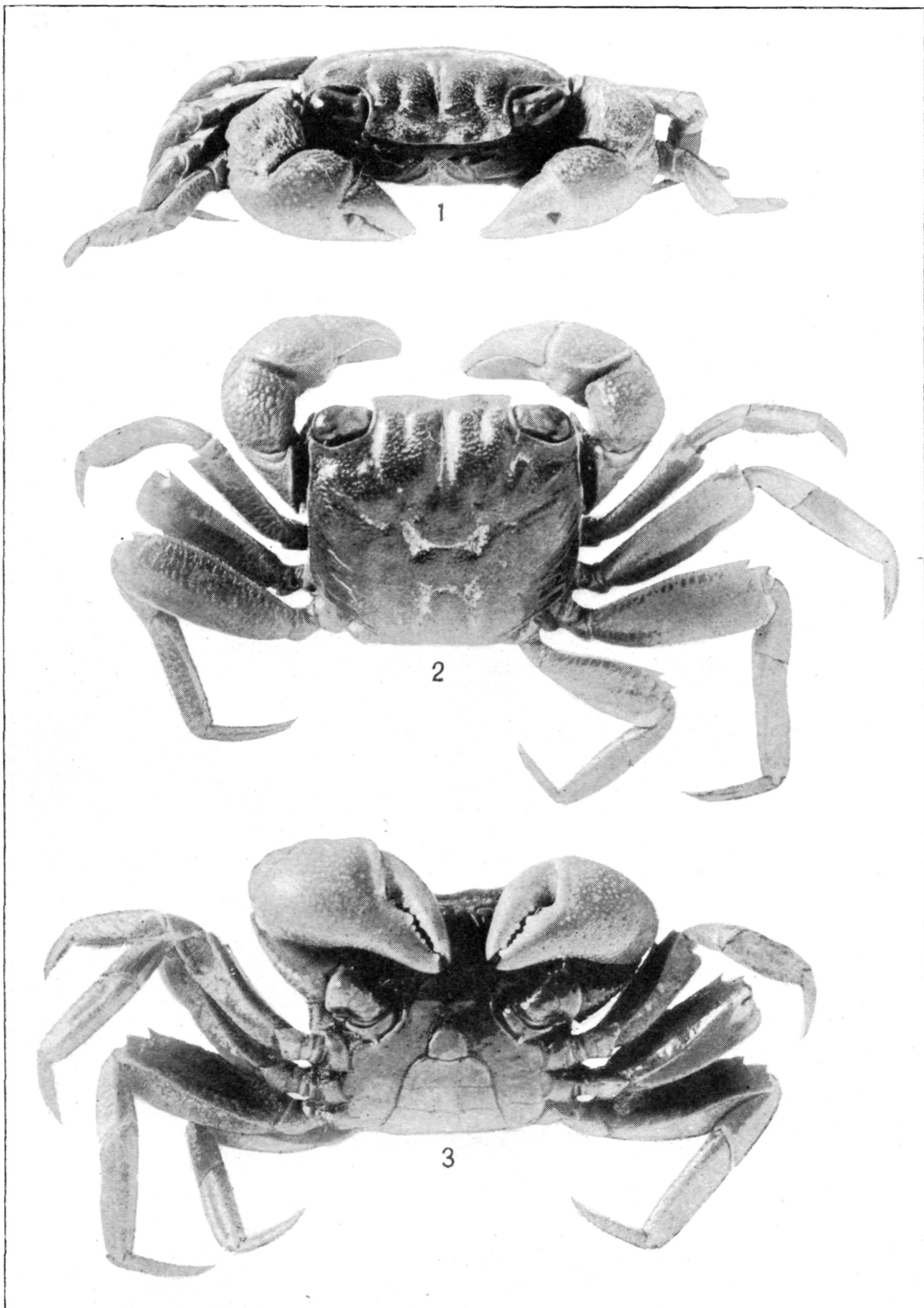
SESARMA (HOLOMETOPUS) RECTUM. (PAGE 298.)

FOR EXPLANATION OF PLATE SEE PAGE 436.



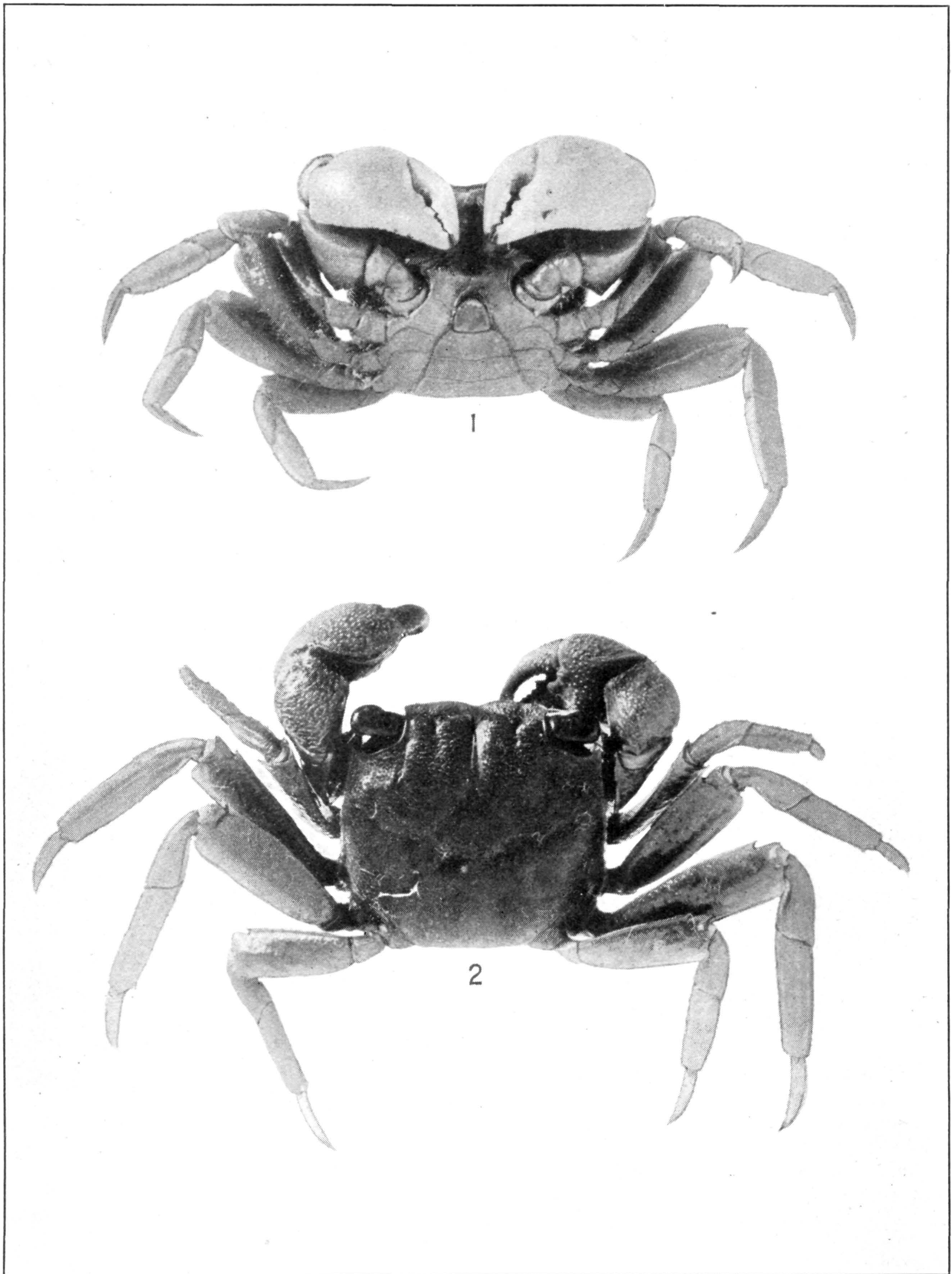
SESARMA (HOLOMETOPUS) CINEREUM. (PAGE 300.)

FOR EXPLANATION OF PLATE SEE PAGE 436.



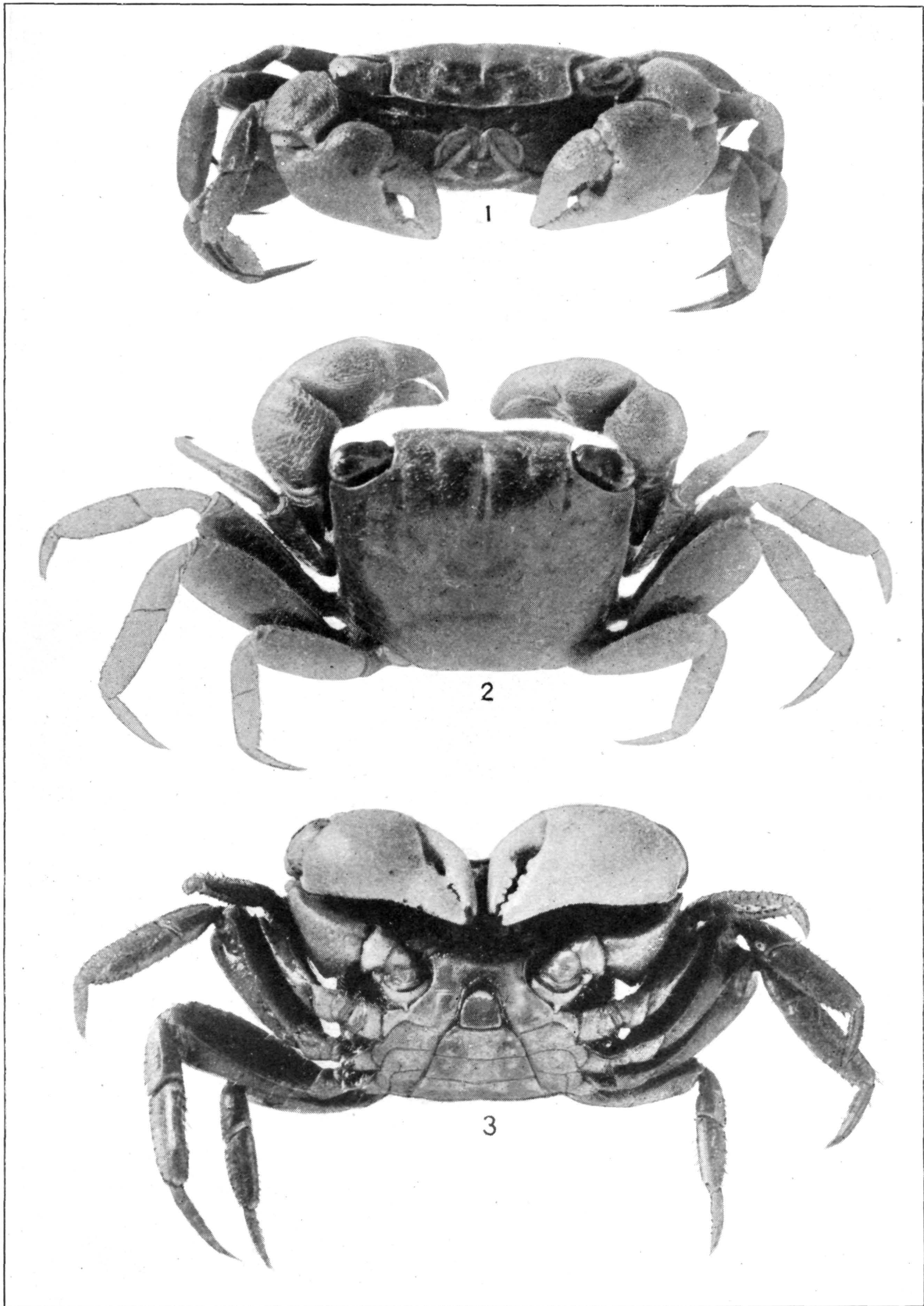
SESARMA (HOLOMETOPUS) MIERSII. (PAGE 303.)

FOR EXPLANATION OF PLATE SEE PAGE 436.



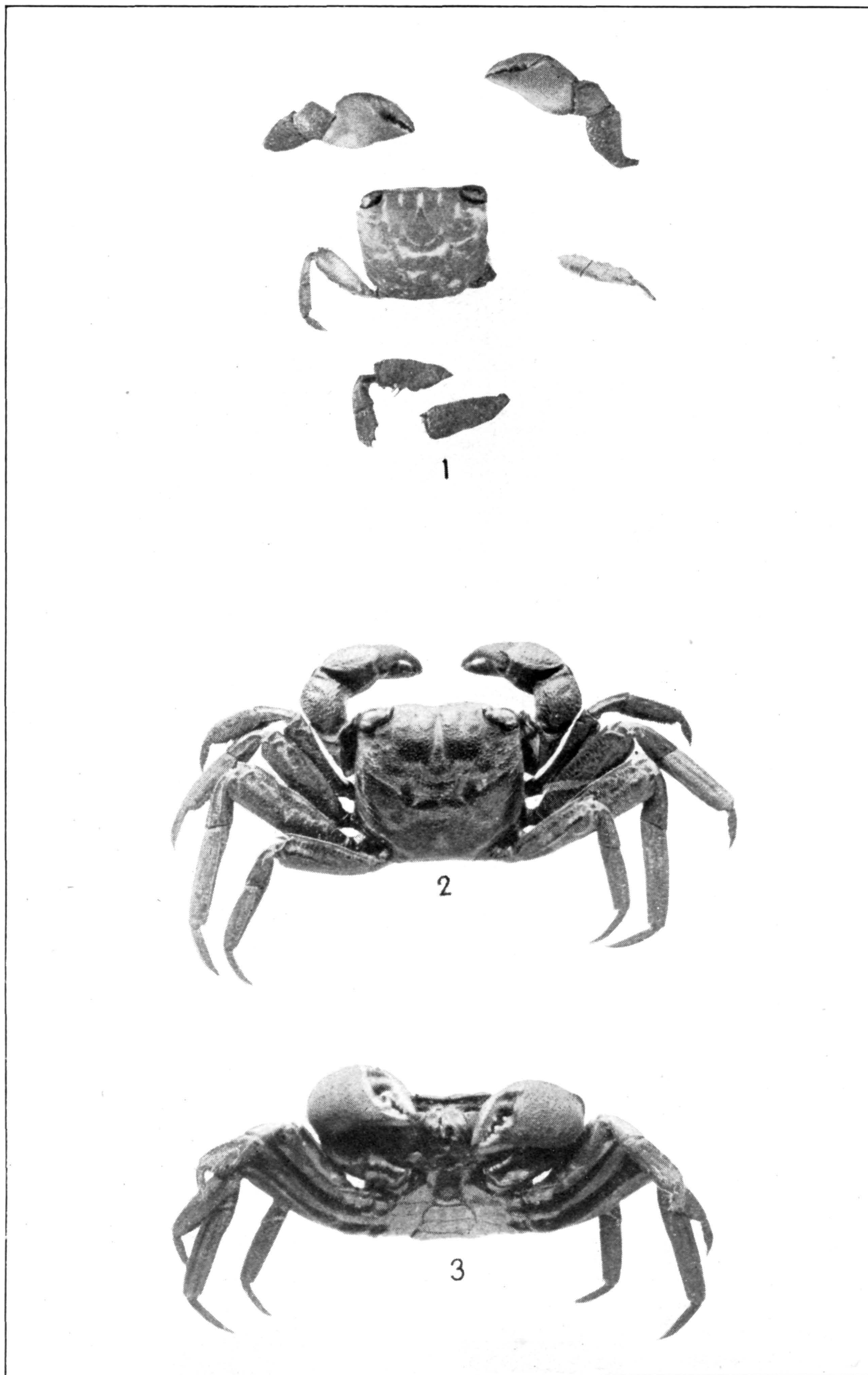
SESARMA (HOLOMETOPUS) MIERSII IHERINGI. (PAGE 304.)

FOR EXPLANATION OF PLATE SEE PAGE 436.



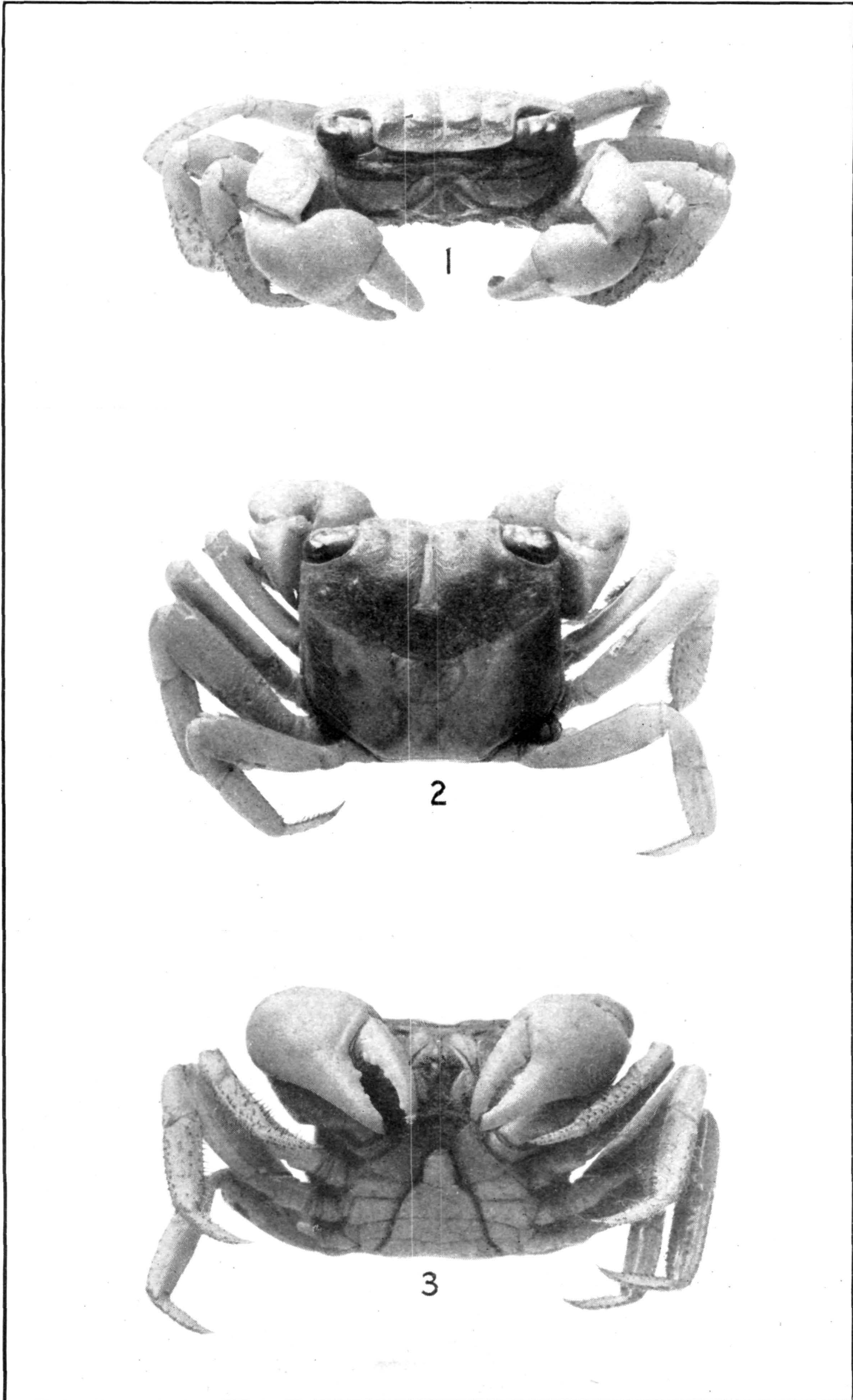
SESARMA (HOLOMETOPUS) MAGDALENENSE. (PAGE 305.)

FOR EXPLANATION OF PLATE SEE PAGE 436.



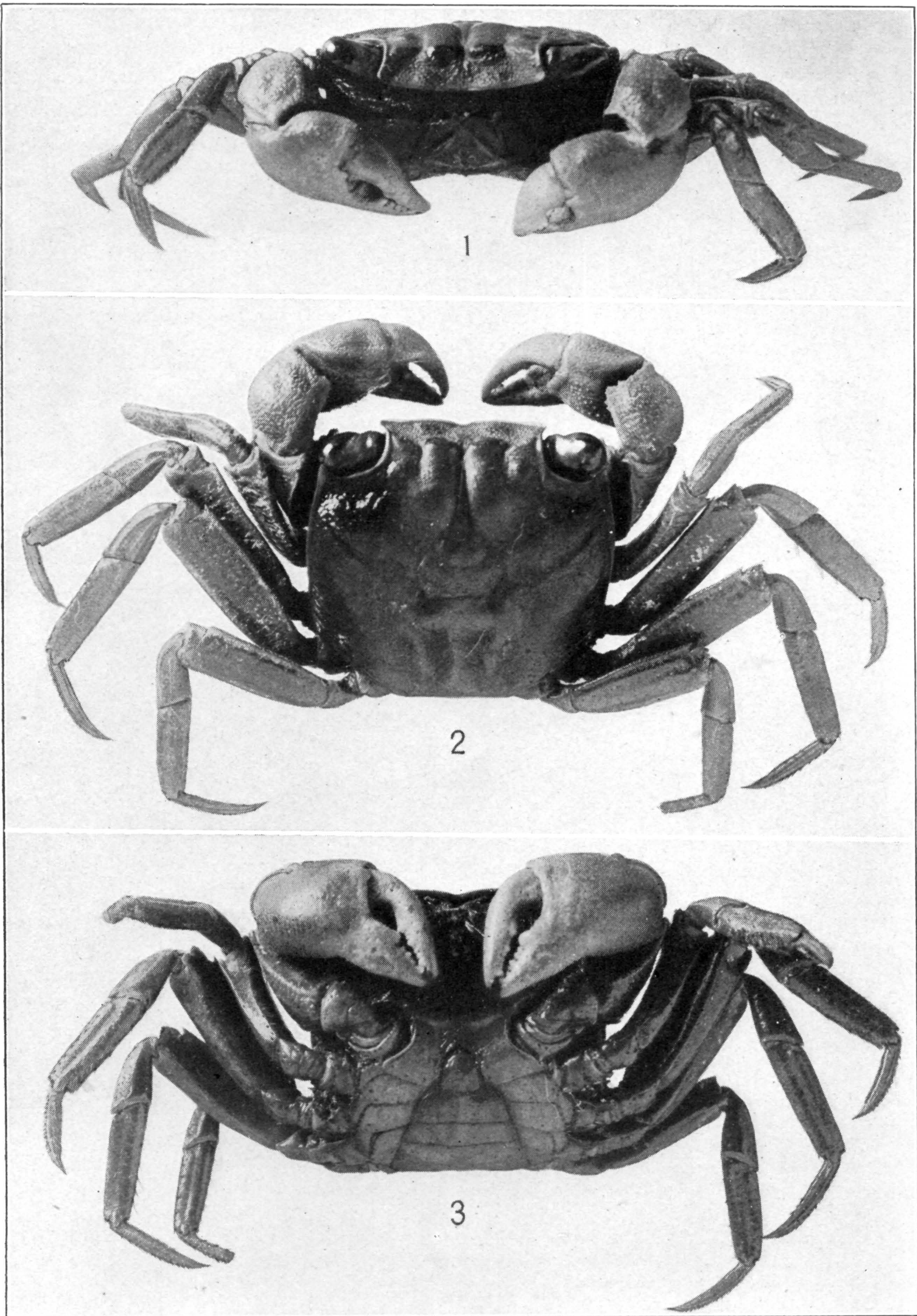
1. *SESARMA (HOLOMETOPUS) HANSENI*. (PAGE 315.) 2, 3. *S. (H.) BIOLLEYI*. (PAGE 306.)

FOR EXPLANATION OF PLATE SEE PAGE 437.



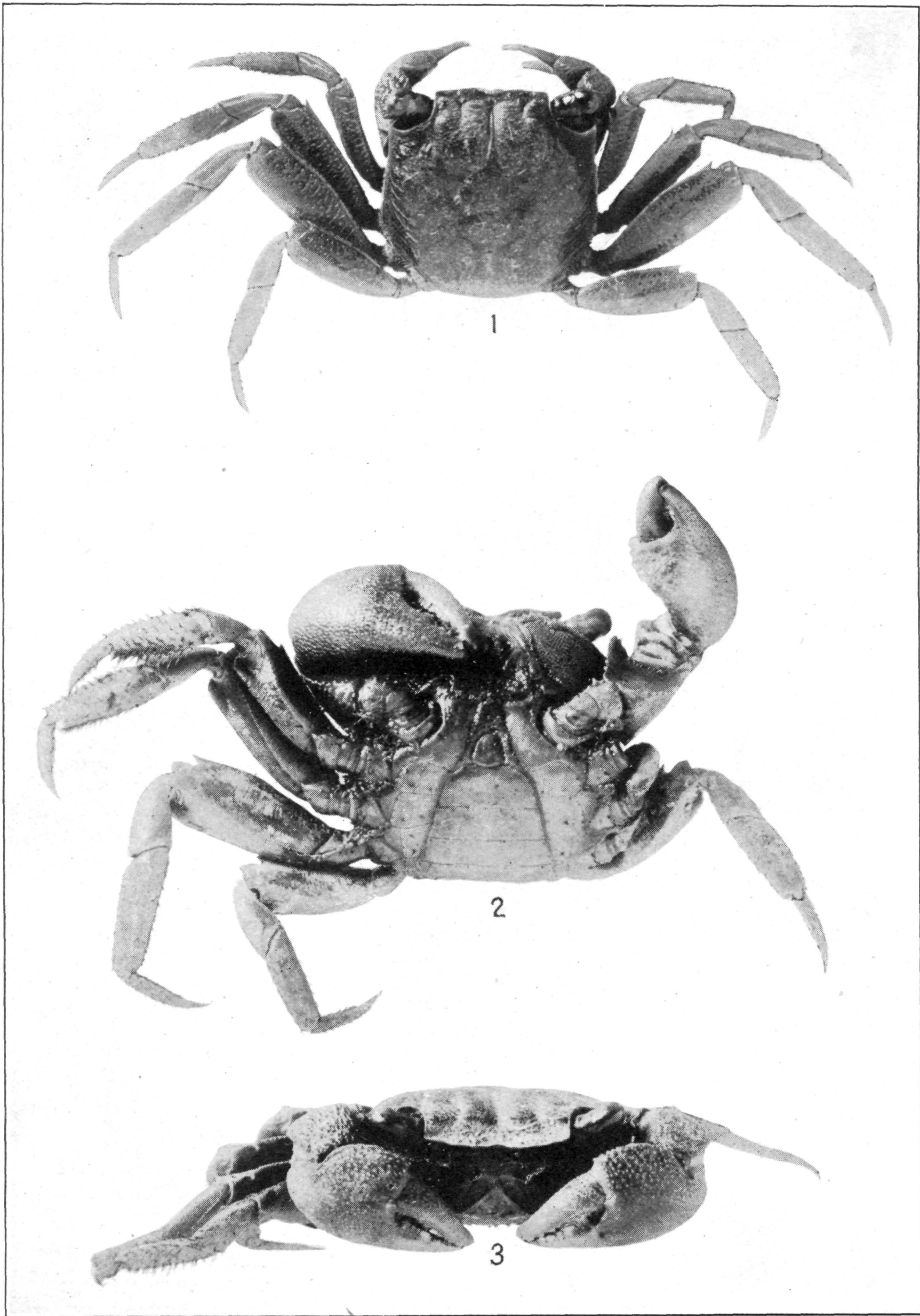
SESARMA (HOLOMETOPUS) TAMPICENSE. (PAGE 307.)

FOR EXPLANATION OF PLATE SEE PAGE 437.



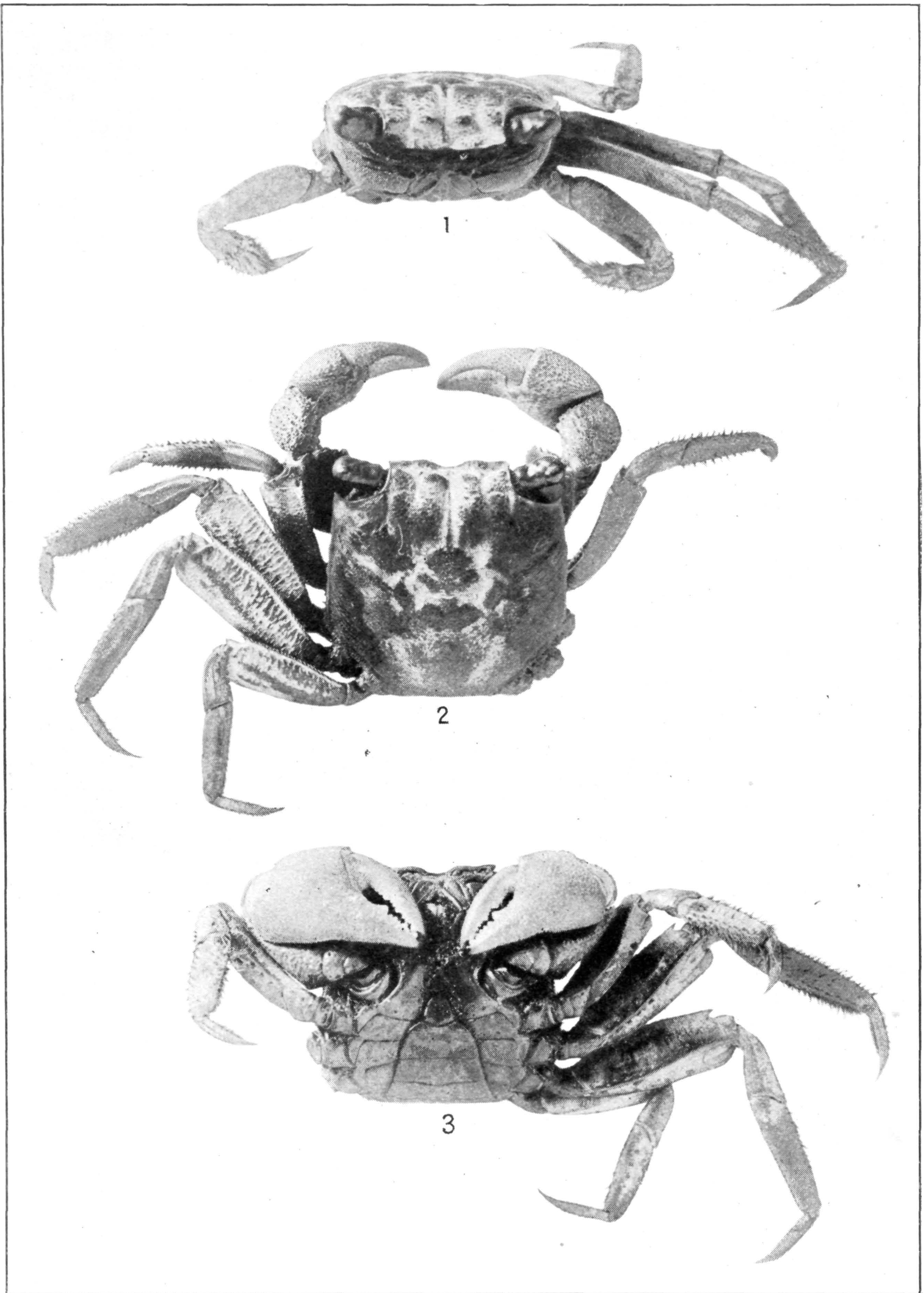
SESARMA (HOLOMETOPUS) RICORDI. (PAGE 308.)

FOR EXPLANATION OF PLATE SEE PAGE 437.



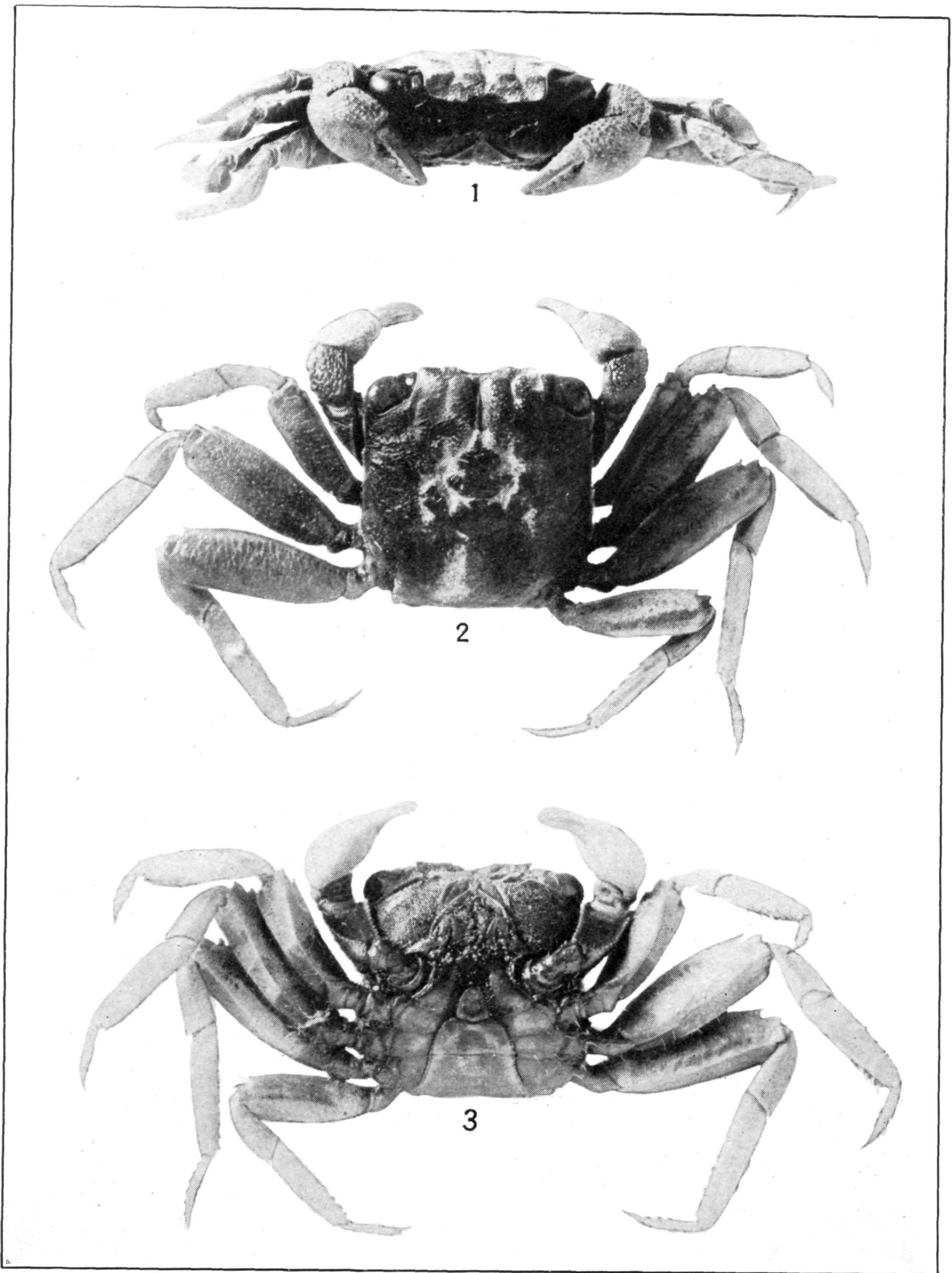
SESARMA (HOLOMETOPUS) ANGUSTIPES. (PAGE 311.)

FOR EXPLANATION OF PLATE SEE PAGE 437.



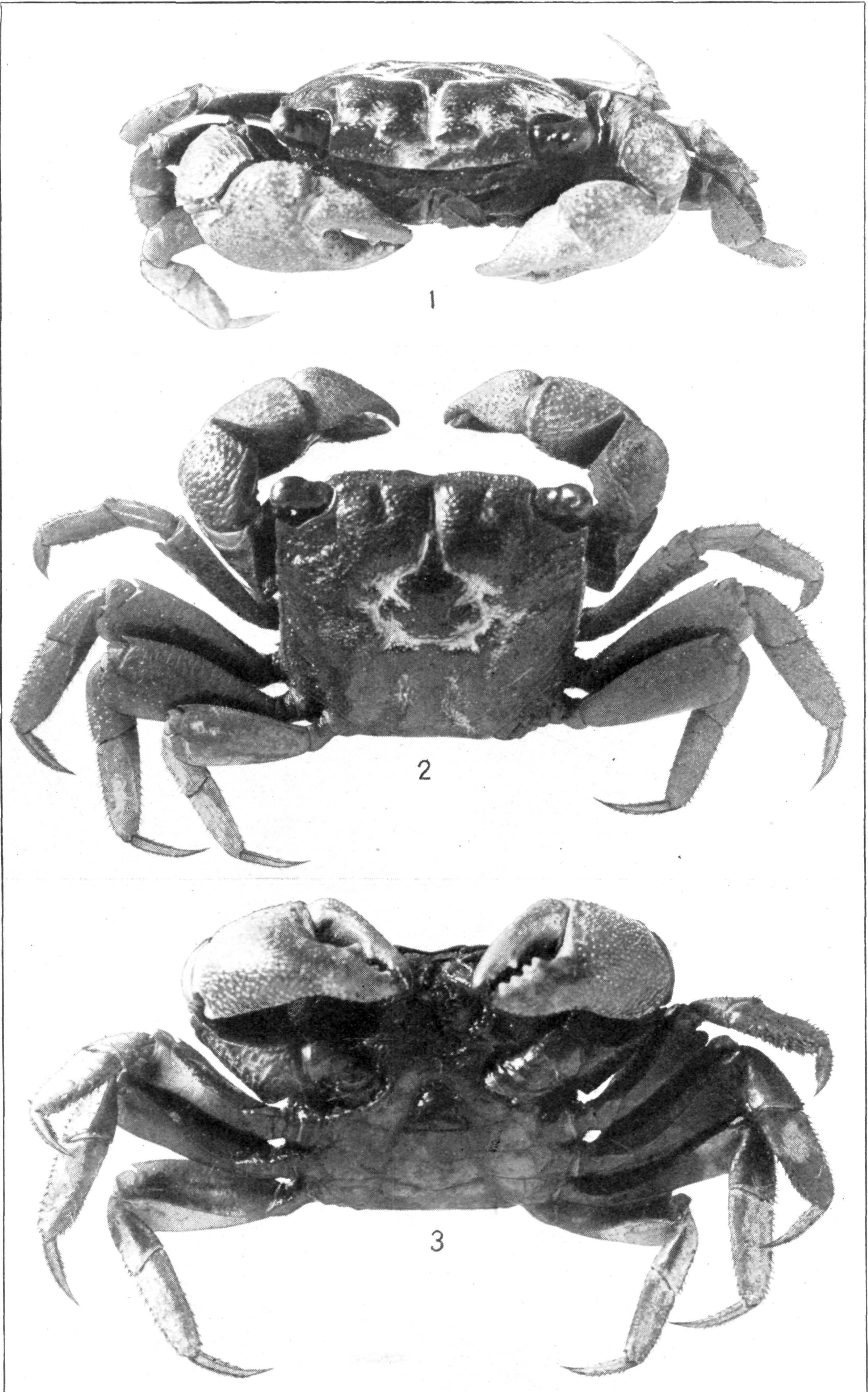
SESARMA (HOLOMETOPUS) ROBERTI. (PAGE 312.)

FOR EXPLANATION OF PLATE SEE PAGE 437.



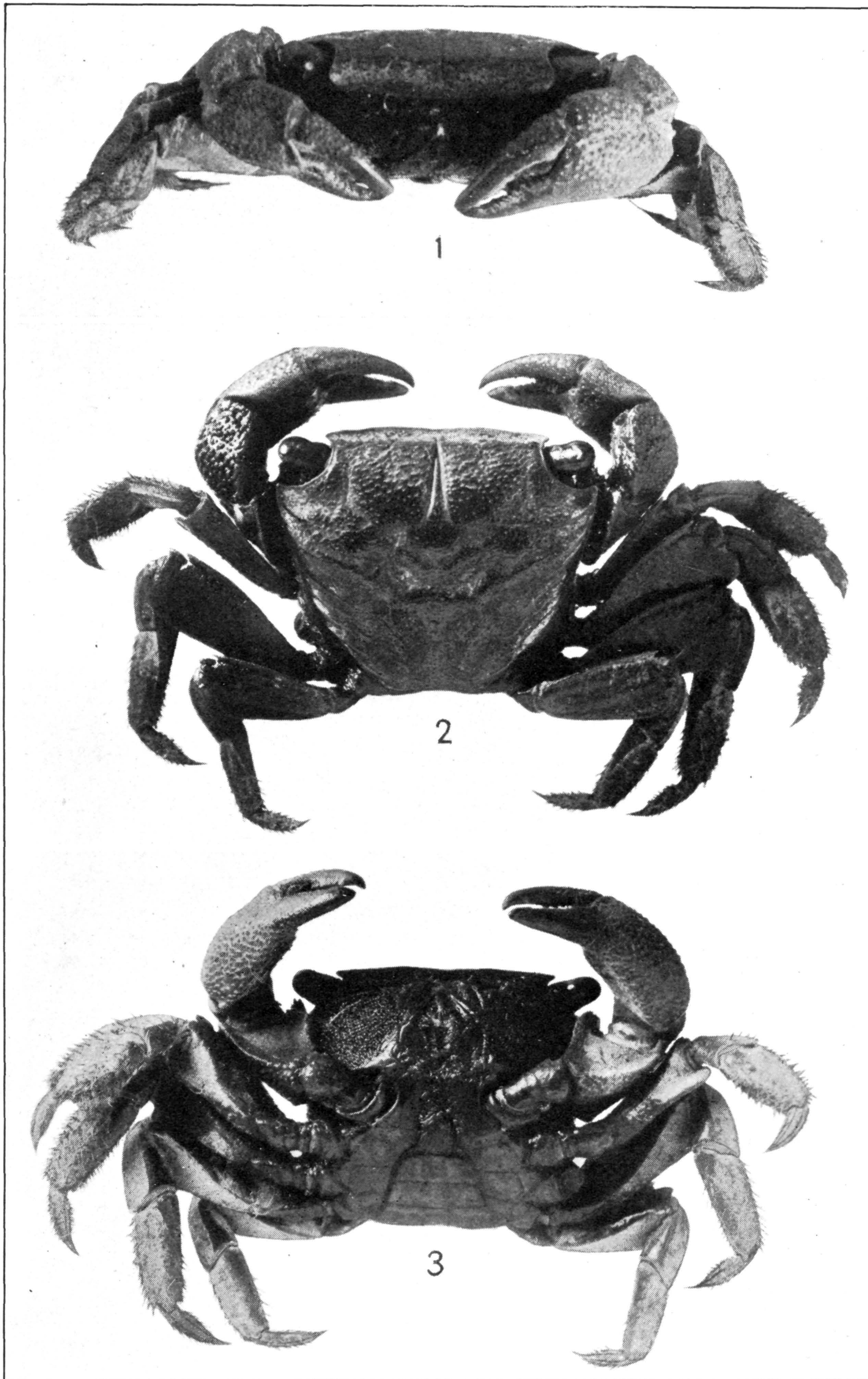
SESARMA (HOLOMETOPUS) ANGUSTUM. (PAGE 314.)

FOR EXPLANATION OF PLATE SEE PAGE 437.



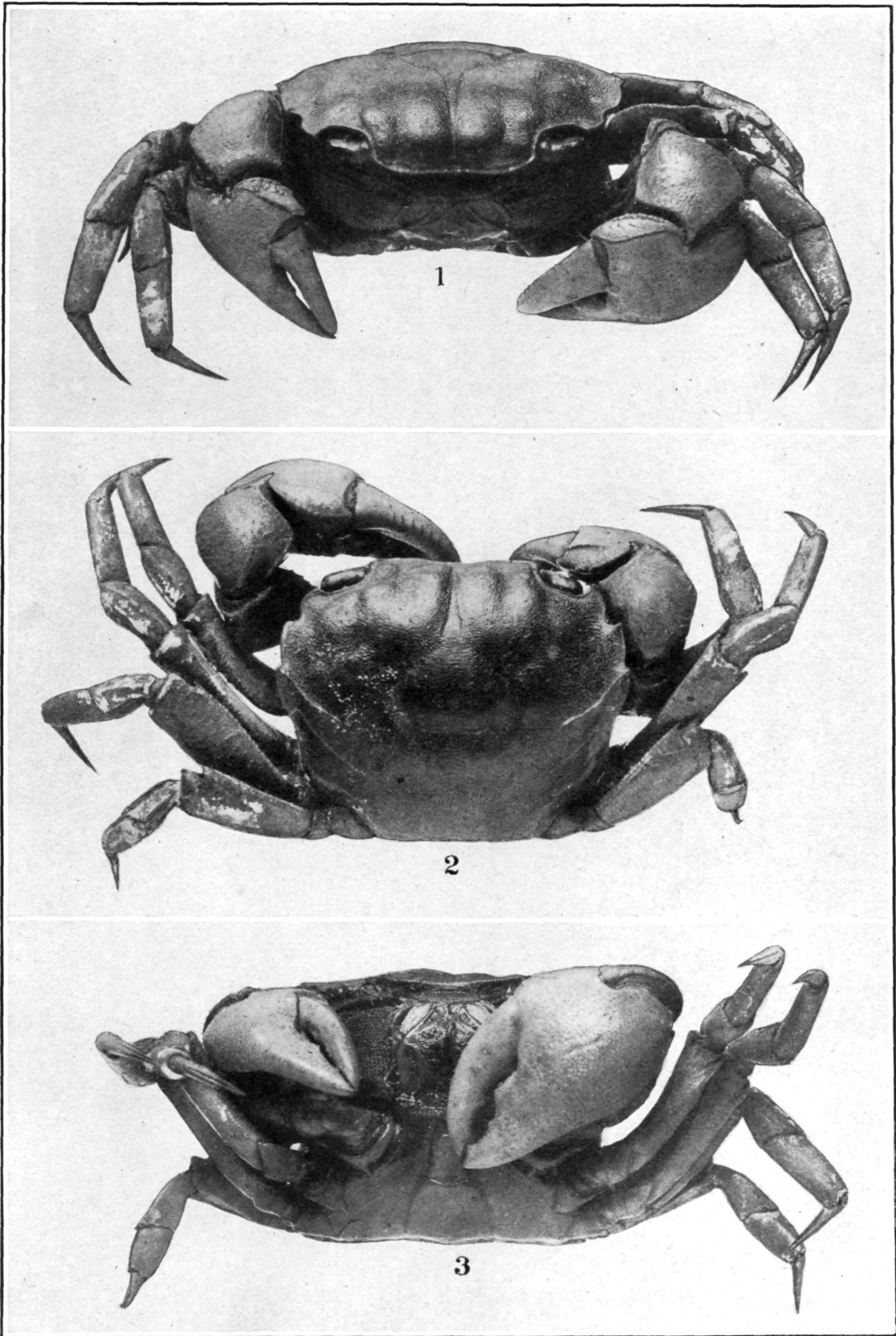
SESARMA (HOLOMETOPUS) BENEDICTI. (PAGE 316.)

FOR EXPLANATION OF PLATE SEE PAGE 437.



METASESARMA RUBRIPES. (PAGE 319.)

FOR EXPLANATION OF PLATE SEE PAGE 437.



SARMATIUM CURVATUM. (PAGE 321.)

FOR EXPLANATION OF PLATE SEE PAGE 438.



ARATUS PISONII. PAGE 323.)

FOR EXPLANATION OF PLATE SEE PAGE 438.



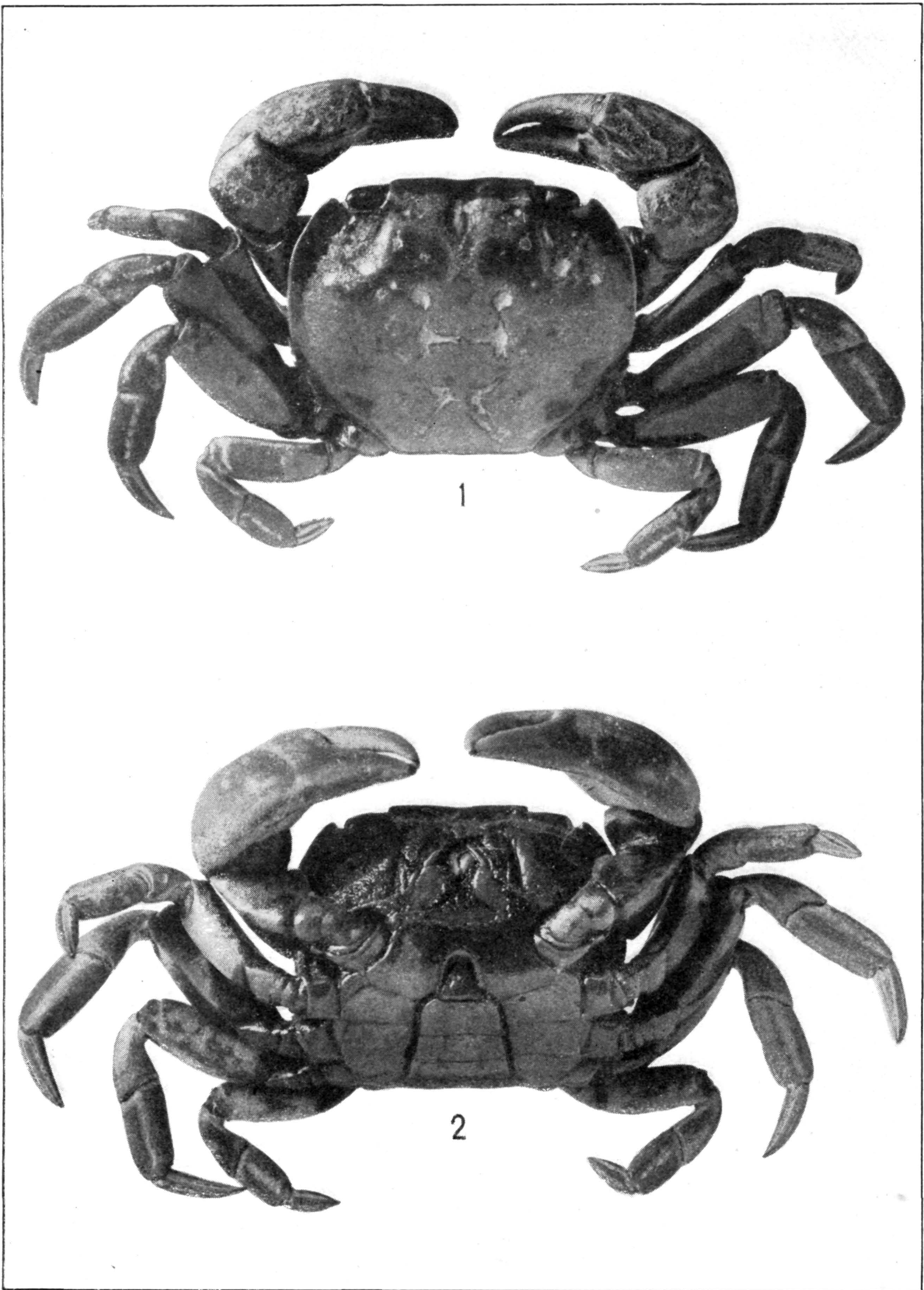
1, 2. *CYCLOGRAPSUS* *INTEGRUS*. (PAGE 326.) 3, 4. *METOPAULIAS* *DEPRESSUS*.
(PAGE 318.)

FOR EXPLANATION OF PLATE SEE PAGE 438.



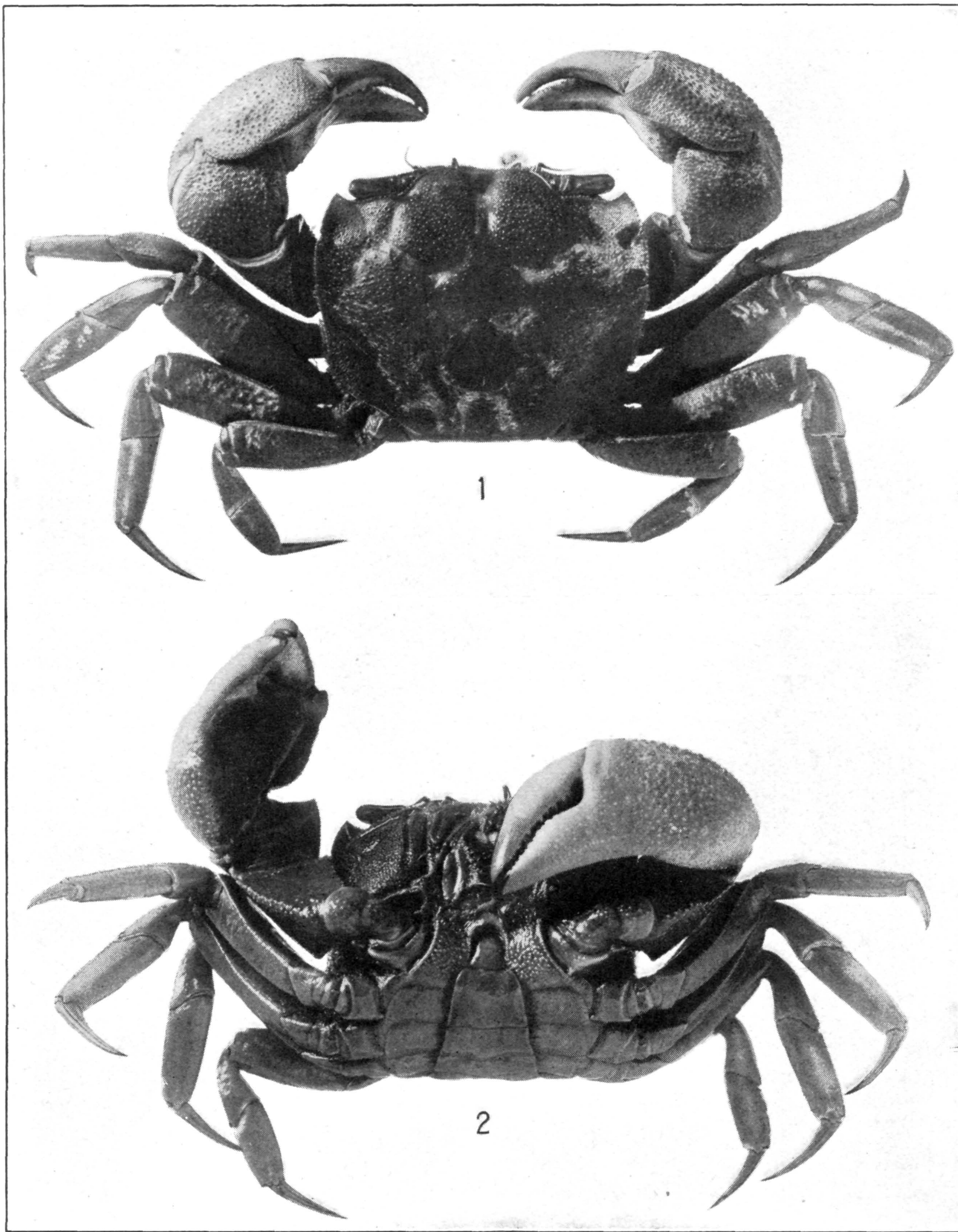
CYCLOGRAPSPUS CINEREUS. (PAGE 327.)

FOR EXPLANATION OF PLATE SEE PAGE 438.



CYCLOGRAPUS PUNCTATUS. (PAGE 328.)

FOR EXPLANATION OF PLATE SEE PAGE 438.



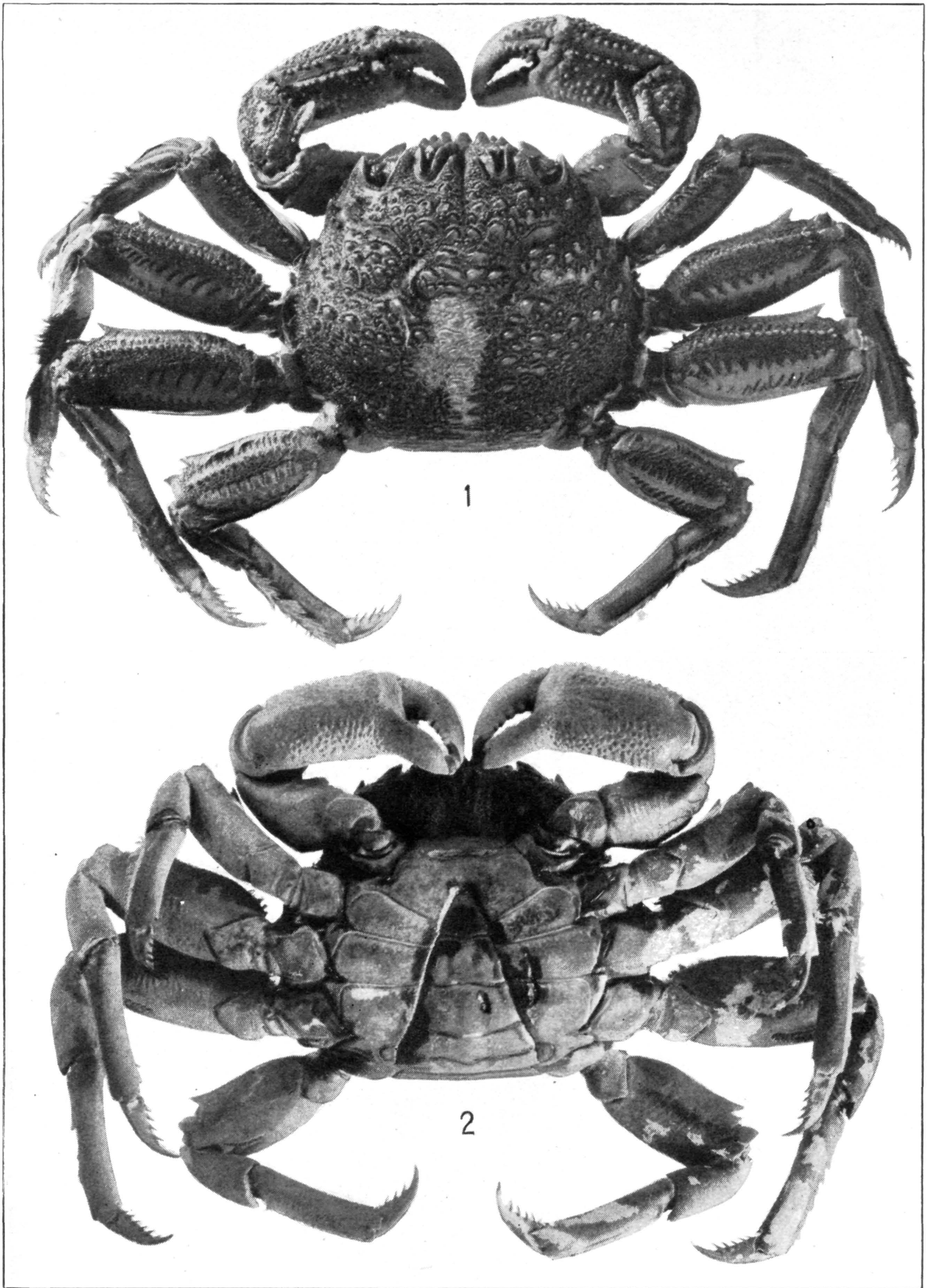
CHASMAGNATHUS GRANULATA. (PAGE 329.)

FOR EXPLANATION OF PLATE SEE PAGE 438.



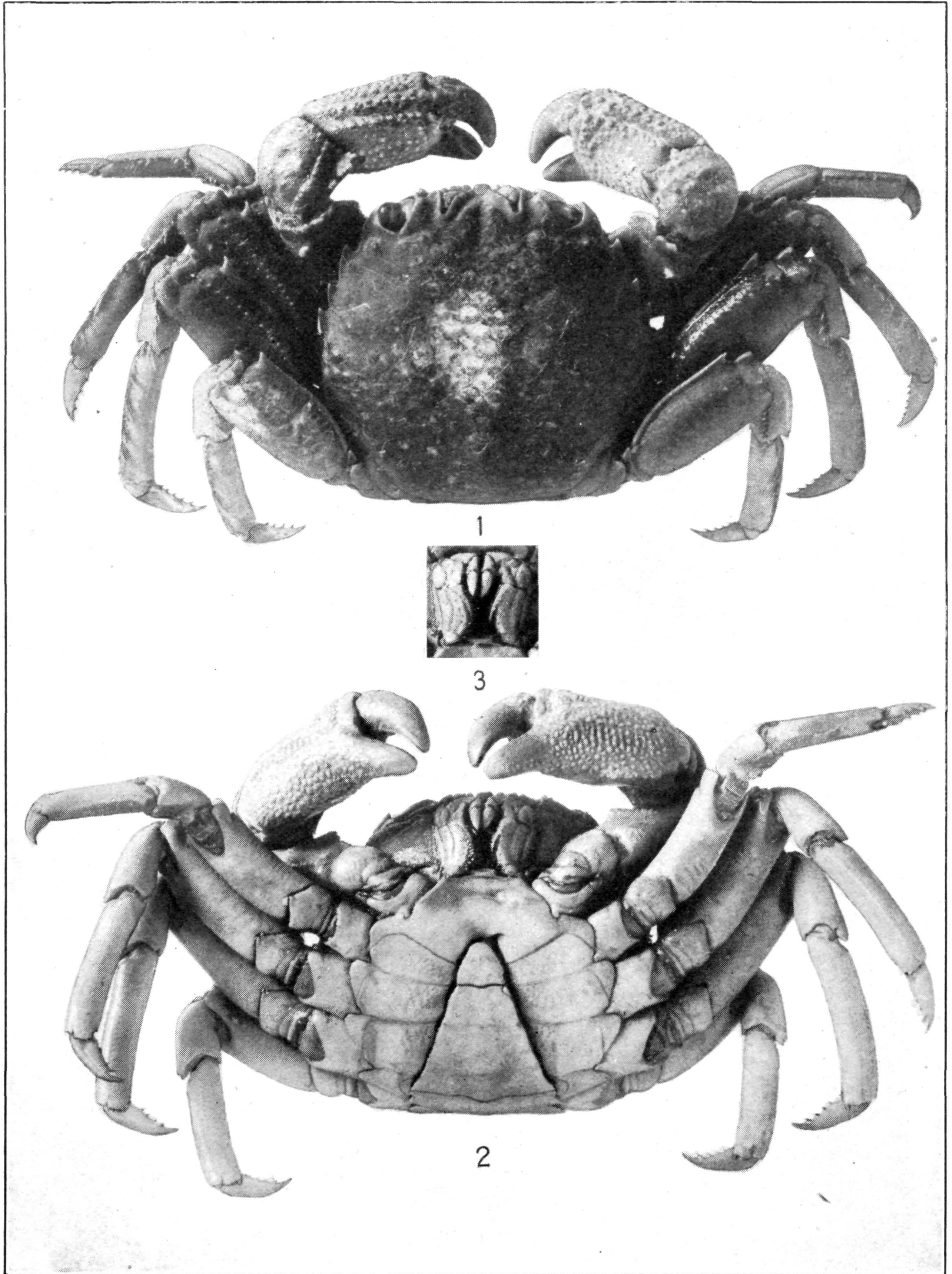
PLAGUSIA DEPRESSA. (PAGE 332.)

FOR EXPLANATION OF PLATE SEE PAGE 438.



PLAGUSIA DEPRESSA TUBERCULATA. (PAGE 334.)

FOR EXPLANATION OF PLATE SEE PAGE 438.



PLAGUSIA IMMACULATA. (PAGE 335.)

FOR EXPLANATION OF PLATE SEE PAGE 439.



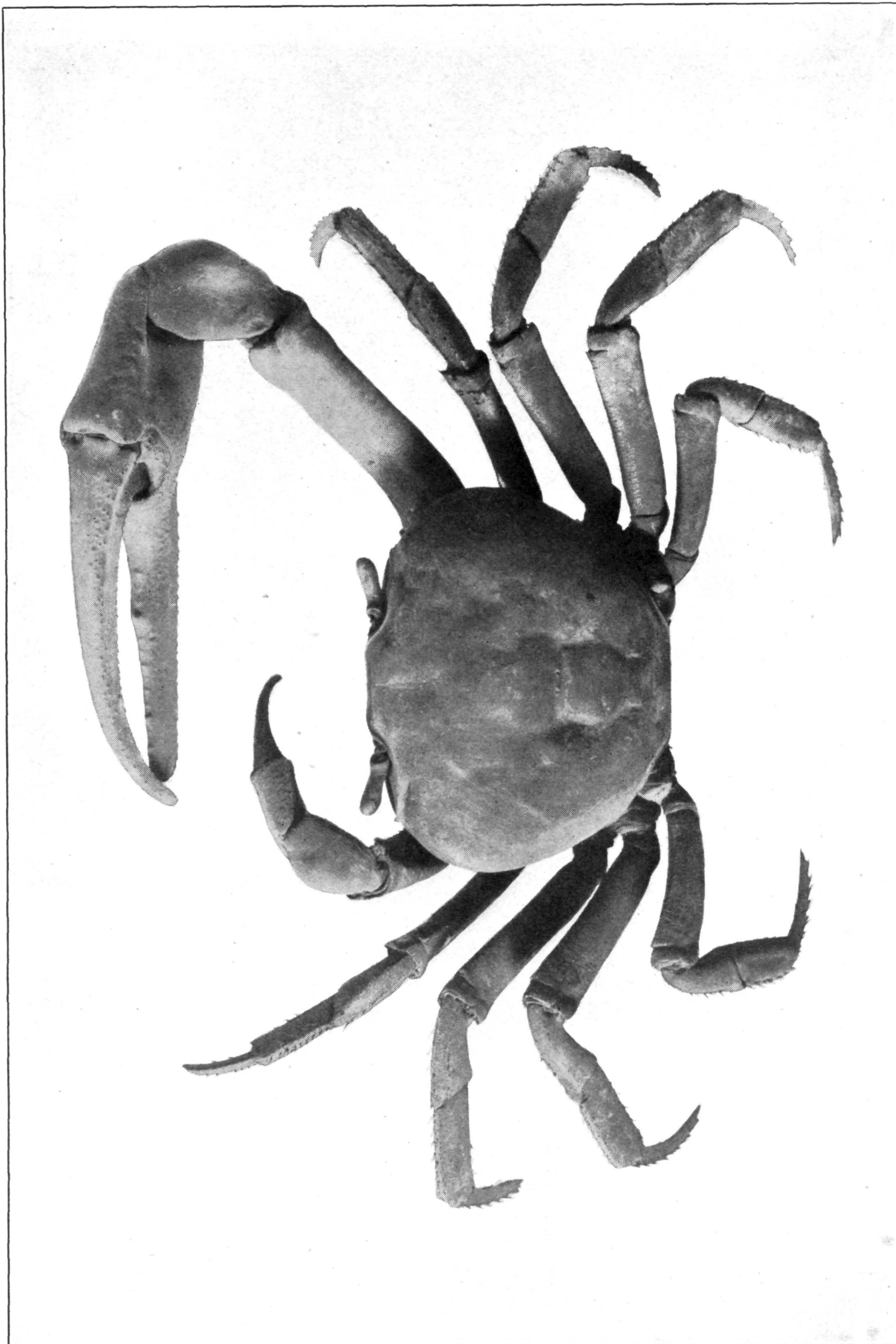
PLAGUSIA CHABRUS. (PAGE 336.)

FOR EXPLANATION OF PLATE SEE PAGE 439.



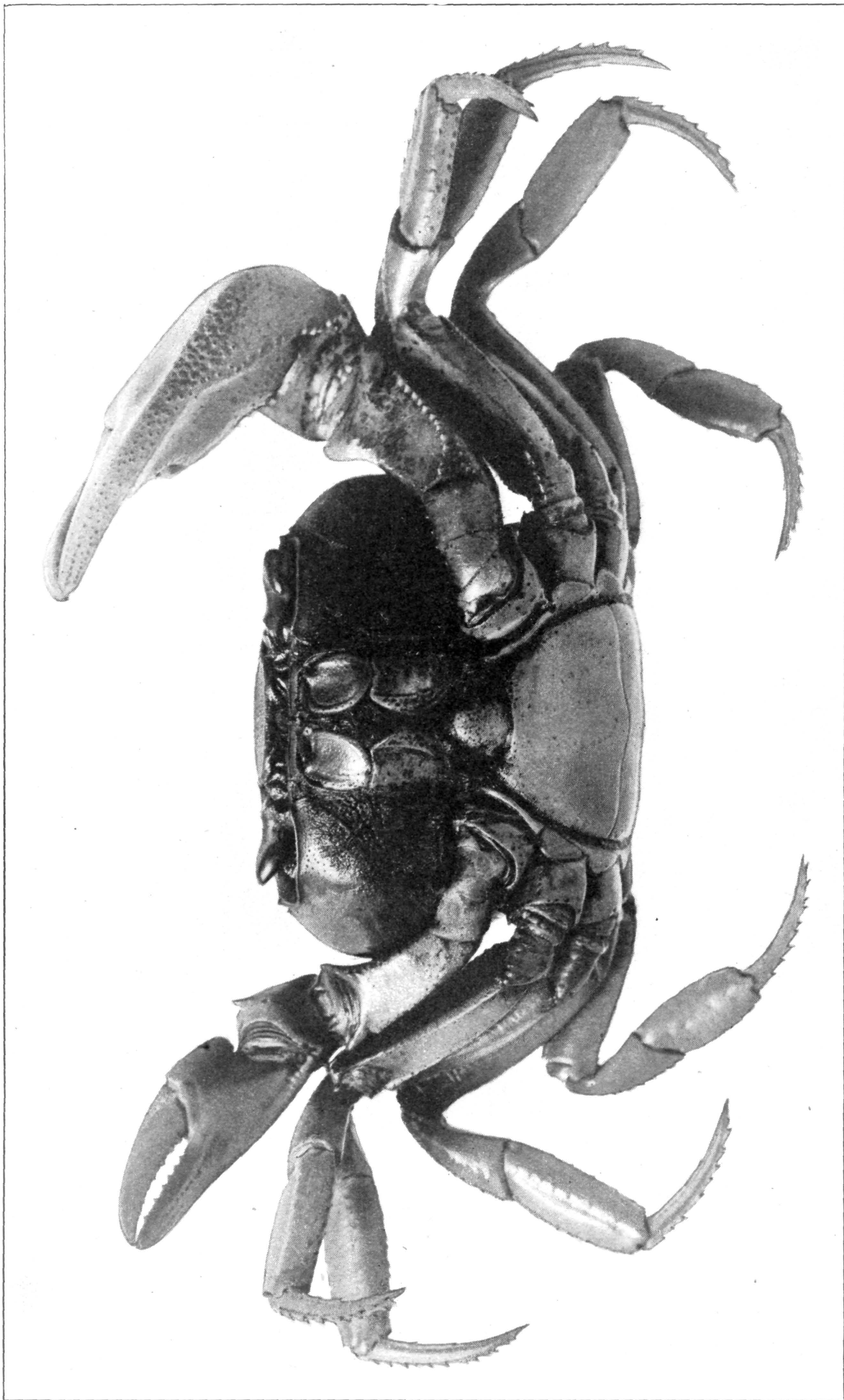
PERCNON GIBBESI. (PAGE 337.)

FOR EXPLANATION OF PLATE SEE PAGE 439.



CARDISOMA GUANHUMI. (PAGE 341.)

FOR EXPLANATION OF PLATE SEE PAGE 439.



CARDISOMA GUANHUMI. (PAGE 341.)

FOR EXPLANATION OF PLATE SEE PAGE 439.