

Fig. 15 — *Ifasya straeleni* n.sp., n.cat. MSNM i8463a, photo and reconstruction ( $\times 1.8$ ).

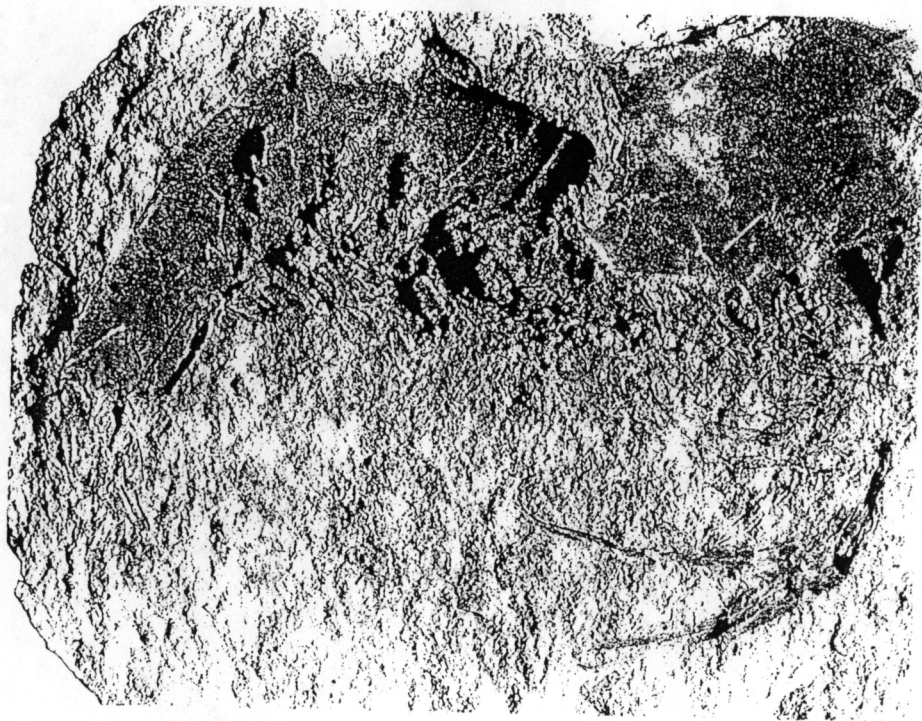


Fig. 16. *Itissa stacioni* n. sp. n. cat. MSNM (11114), photo and reconstruction (c. 5.8x)

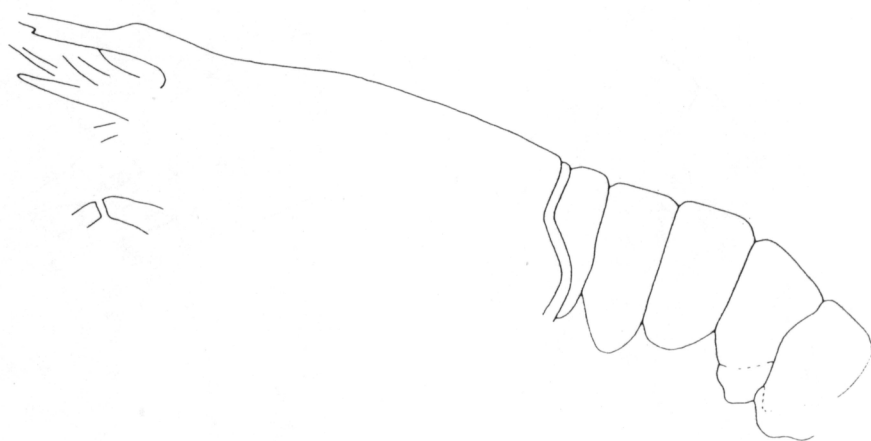
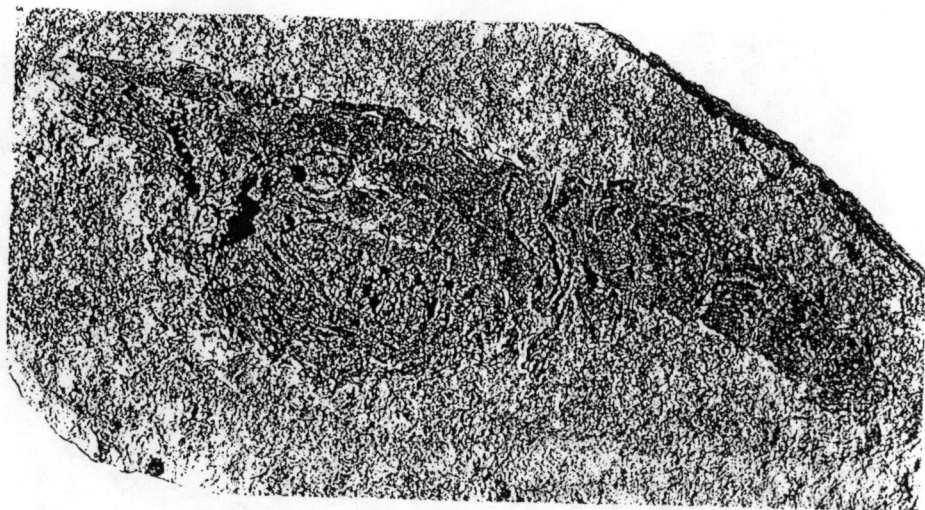


Fig. 17 - *Ilasva madagascariensis* (Van Straelen, 1933), holotype, R05490, photo and reconstruction ( $\times 3$ )

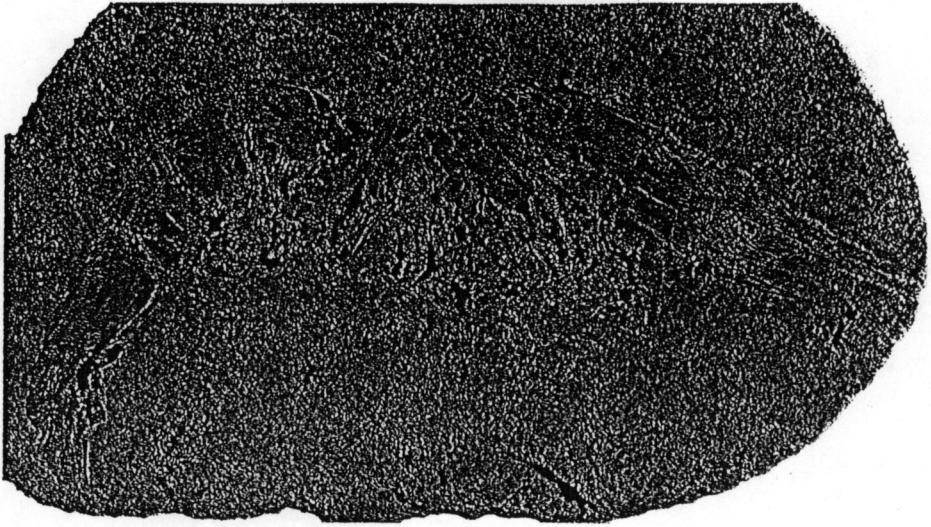


Fig. 18 — *Ifasya madagascariensis* (Van Straelen, 1933), n.cat. MSNM i9328a, photo and reconstruction ( $\times 2.4$ ).