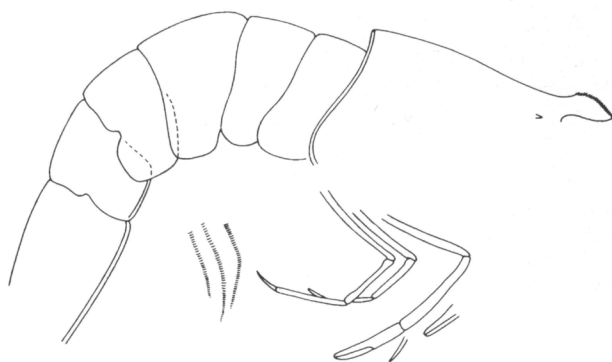
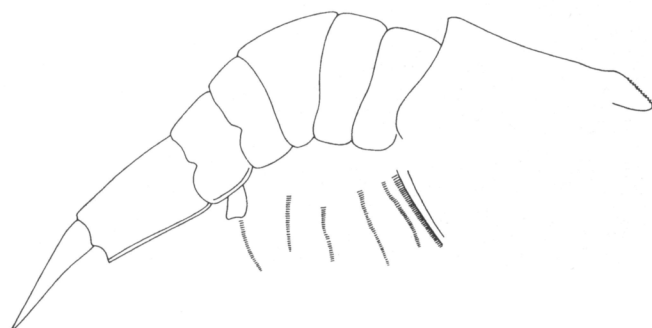




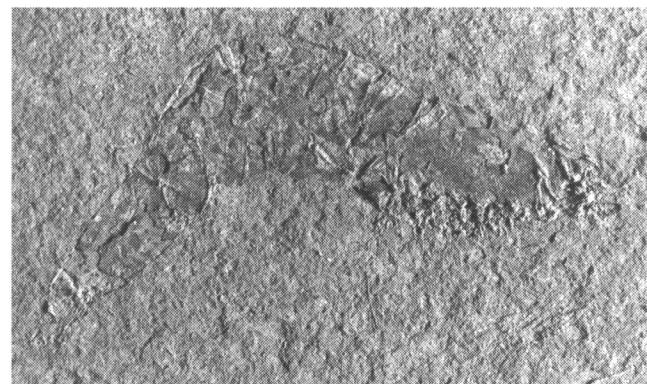
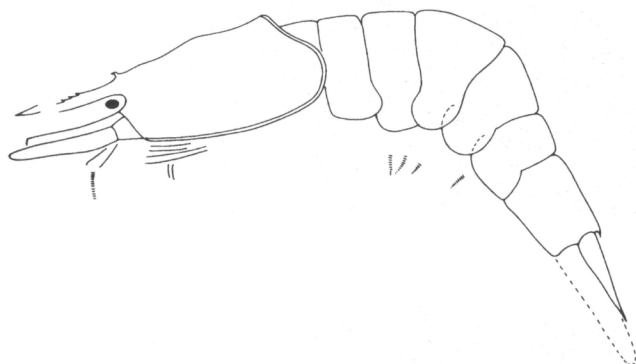
1



2



3



4

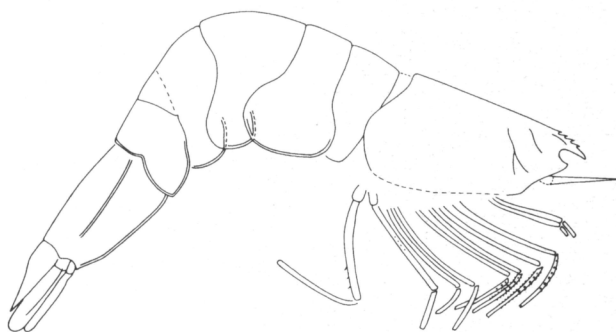
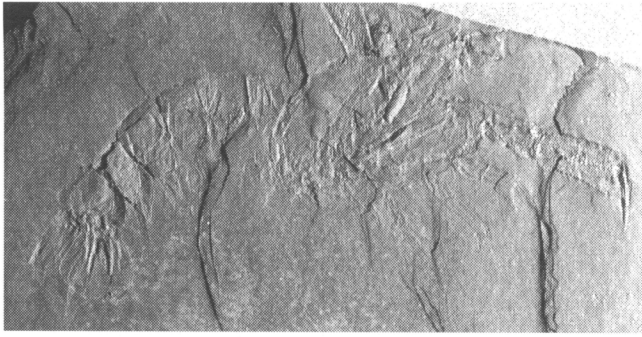
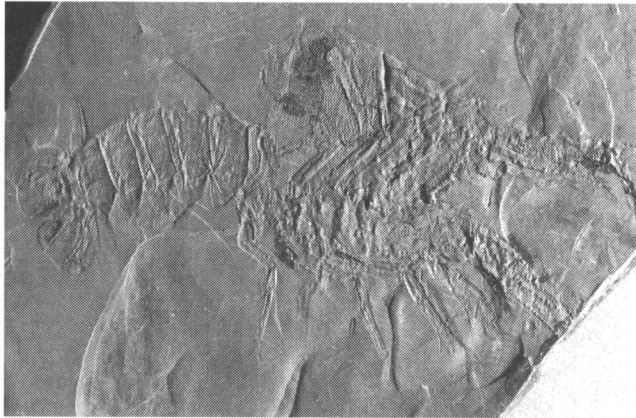
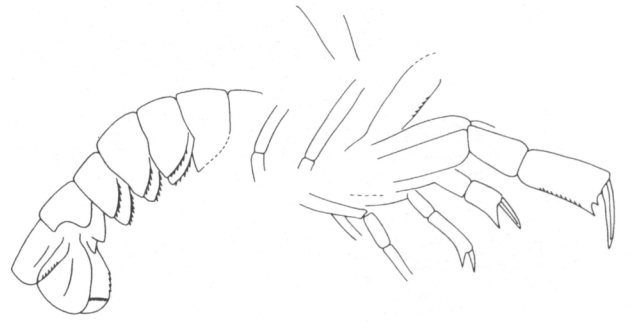


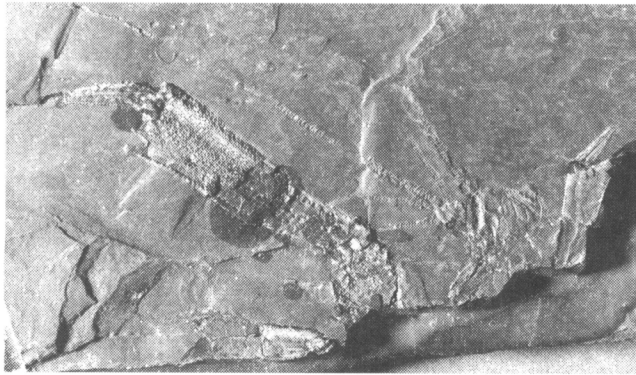
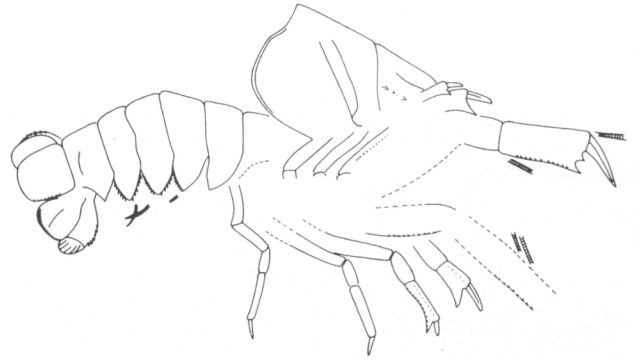
Table II - 1) *Satyrus cristatus* n. gen. n. sp., n. cat. MSNB 8248, photo and reconstruction (x 3); 2) *Satyrus cristatus* n. gen. n. sp., n. cat. MSNB 8240, photo and reconstruction (x 3,1); 3) Indeterminate penaeid, n. cat. MSNB 7779, photo and reconstruction (x 3,2); 4) *Pinnacaris dentata* n. gen. n. sp., holotype, n. cat. MSNM i10691, photo and reconstruction (x 2)



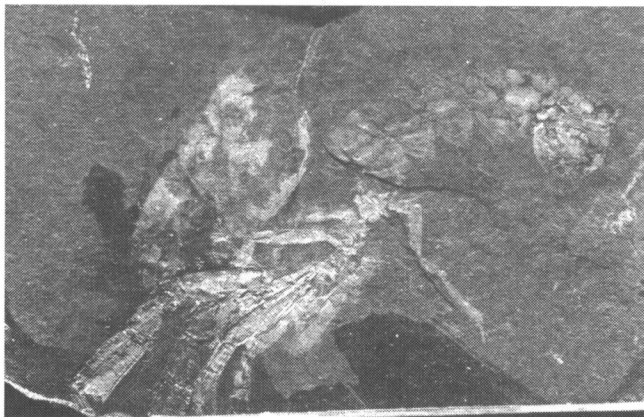
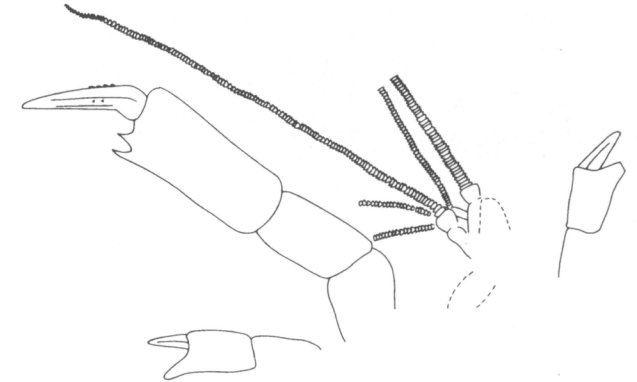
1



2



3



4

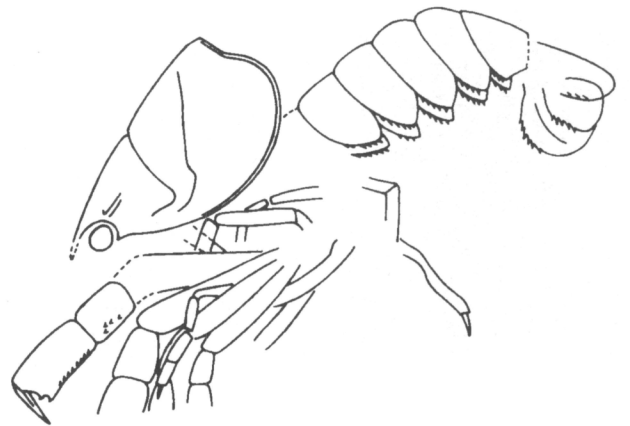
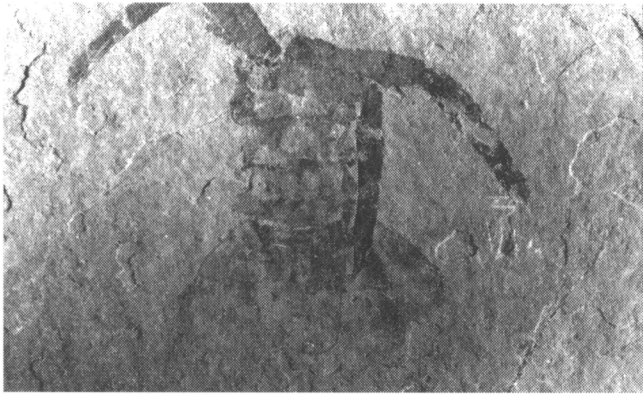
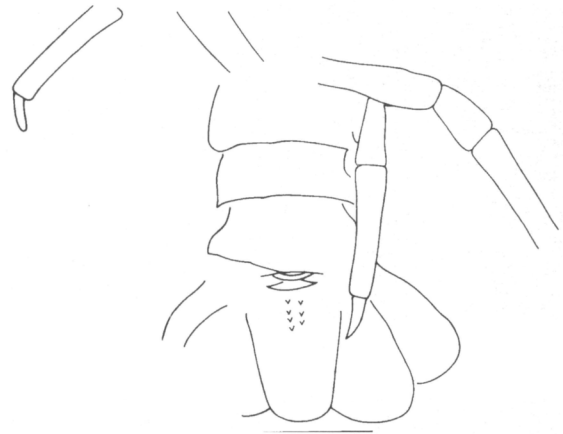


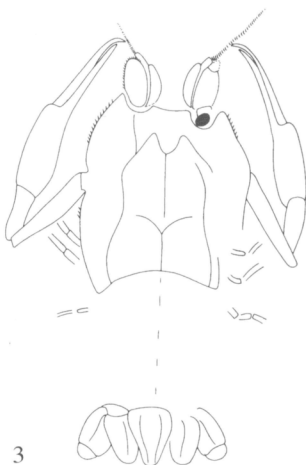
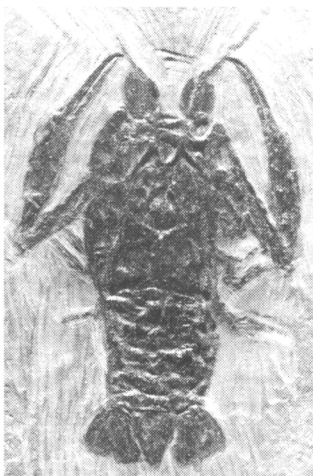
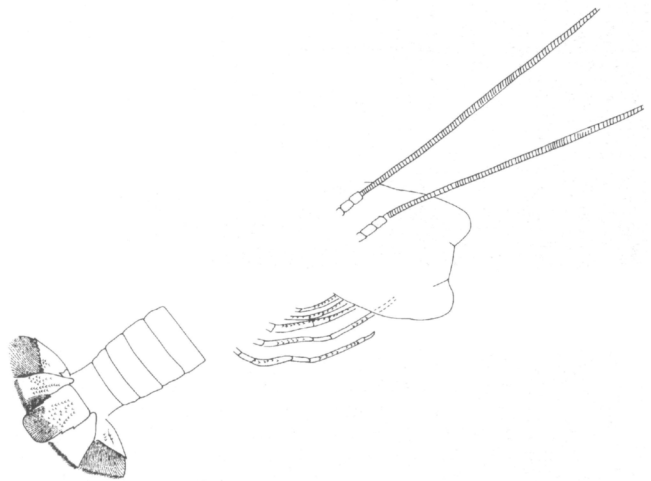
Table III - 1) *Pseudoglyphea gigantea* n. sp., holotype, n. cat. MSNM i10678, photo and reconstruction (x 1,5); 2) *Pseudoglyphea gigantea* n. sp., n. cat. MSNB 7558, photo and reconstruction (x 1); 3) *Pseudoglyphea gigantea*, n. sp., n. cat. MSNB 7573, photo and reconstruction (x 0,7); 4) *Pseudoglyphea gigantea* n. gen. n. sp., n. cat. MSNB 7561, photo and reconstruction (x 2,8)



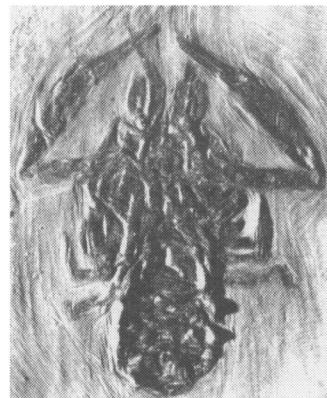
1



2



3



4

Table IV - 1) *Archaeopalpinurus levis* Pinna, 1974, n. cat. MSNM i12477 (Piani di Rest), photo and reconstruction (x 2,6);
2) *Archaeopalpinurus levis* Pinna, 1974, n. cat. MSNM i10747, photo and partial reconstruction (natural size); 3)
Pseudocoleia mazzolenii, n. gen. n. sp., holotype, n. cat. MSNM i12467, photo and reconstruction (x 1,7); 4) *Pseudocoleia*
mazzolenii n. gen. n. sp., n. cat. MSNB 8183, photo and reconstruction (x 1,6)